



1. Coral Castle
2. 28655 South Federal Highway,
Homestead (Dade County), FL.
3. Dade County Historic Preservation
Division
4. 1983
5. Dade County Historic Preservation
Division
6. Reading Chair, in background is
First Rocking Chair and Planets
7. Photo 1 of 1417



1. Coral Castle
2. 28655 South Federal Highway,
Homestead (Dade County), FL.
3. Dade County Historic Preservation
Division
4. 1983
5. Dade County Historic Preservation
Division
6. Florida Table and Chairs
7. Photo 2 of ~~14~~ 17



1. Coral Castle
2. 28655 South Federal Highway,
Homestead, (Dade County), FL.
3. Dade County Historic Preservation
Division
4. 1983
5. Dade County Historic Preservation
Division
6. Polaris Telescope
7. Photo 3 of ~~14~~ 17



1. Coral Castle
2. 28655 South Federal Highway,
Homestead (Dade County), FL.
3. Dade County Historic Preservation
Division
4. 1983
5. Dade County Historic Preservation
Division
6. Sundial, in background is Moon Fountain,
and Crown
7. Photo 4 of ~~14~~ 17



1. Coral Castle
2. 28655 South Federal Highway,
Homestead (Dade County), FL.
3. Dade County Historic Preservation
Division
4. 1983
5. Dade County Historic Preservation
Division
6. Chair
7. Photo 5 of ~~14~~17



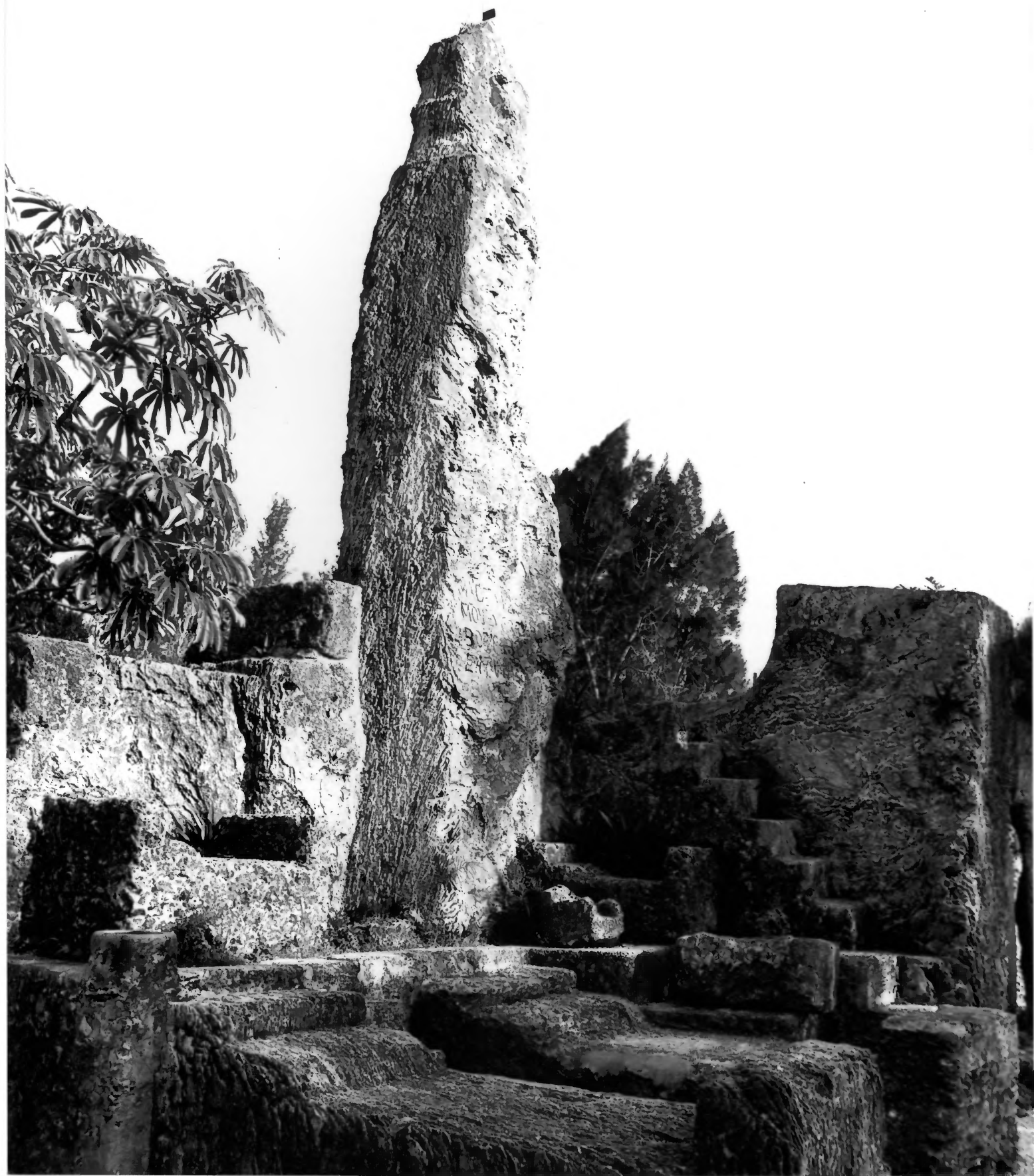
1. Coral Castle
2. 28655 South Federal Highway,
Homestead (Dade County), FL.
3. Dade County Historic Preservation
Division
4. 1983
5. Dade County Historic Preservation
Division
6. Crown, to the right a portion of
the Throne Room
7. Photo 6 of ~~14~~ 17



1. Coral Castle
2. 28655 South Federal Highway,
Homestead (Dade County), FL.
3. Dade County Historic Preservation
Division
4. 1983
5. Dade County Historic Preservation
Division
6. Nine Ton Gate, opened
7. Photo 7 of ~~14~~ 17



1. Coral Castle
2. 28655 South Federal Highway,
Homestead (Dade County), FL.
3. Dade County Historic Preservation
Division
4. 1983
5. Dade County Historic Preservation
Division
6. Nine Ton Gate, closed
7. Photo 8 of ~~14~~ 17



1. Coral Castle
2. 28655 South Federal Highway,
Homestead (Dade County), FL.
3. Dade County Historic Preservation
Division
4. 1983
5. Dade County Historic Preservation
Division
6. Obelisk, in foreground is Bedroom
7. Photo 9 of ~~14~~ 17



MADE 1928
MOVED 1932
BORN 1887
EATVIA


1. Coral Castle
2. 28655 South Federal Highway,
Homestead (Dade County), FL.
3. Dade County Historic Preservation
Division
4. 1983
5. Dade County Historic Preservation
Division
6. Obelisk showing inscription
7. Photo 10 of ~~14~~17



1. Coral Castle
2. 28655 South Federal Highway,
Homestead (Dade County), FL.
3. Dade County Historic Preservation
Division
4. 1983
5. Dade County Historic Preservation
Division
6. Rock Quarry
7. Photo 11 of ~~14~~ 17



1. Coral Castle
2. 28655 South Federal Highway,
Homestead (Dade County), FL.
3. Dade County Historic Preservation
Division
4. 1983
5. Dade County Historic Preservation
Division
6. Tower, Leedskalnin's workshop and
living quarters
7. Photo 12 of ~~14~~ 17



ADM. 10 ♀.

DROP BELOW.

1. Coral Castle
2. 28655 South Federal Highway,
Homestead (Dade County), FL.
3. Dade County Historic Preservation
Division
4. 1983
5. Dade County Historic Preservation
Division
6. Admission gate at Florida City site
7. Photo 13 of ~~14~~ 17



1. Coral Castle
2. 28655 South Federal Highway,
Homestead (Dade County), FL.
3. Dade County Historic Preservation
Division
4. 1983
5. Dade County Historic Preservation
Division
6. Tower at Florida City site
7. Photo 14 of ~~14~~ 17



1. Rock Gate (Coral Castle)
2. 28655 South Federal Highway
3. Staff, Historic Preservation Division
4. 1983
5. Historic Preservation Division
6. Gift shop/ administrative offices
7. PHOTO 15 OF 17



1. Rock Gate (Coral Castle)
2. 28655 South Federal Highway
3. Staff, Historic Preservation Division
4. 1983
5. Historic Preservation Division
6. Gift shop/administrative offices and parking lot
7. PHOTO 16 OF 17



1. Rock Gate (Coral Castle)
2. 28655 South Federal Highway
3. Staff, Historic Preservation Division
4. 1983
5. Historic Preservation Division
6. Gift shop/administrative offices and parking lot
7. PHOTO 17 OF 17