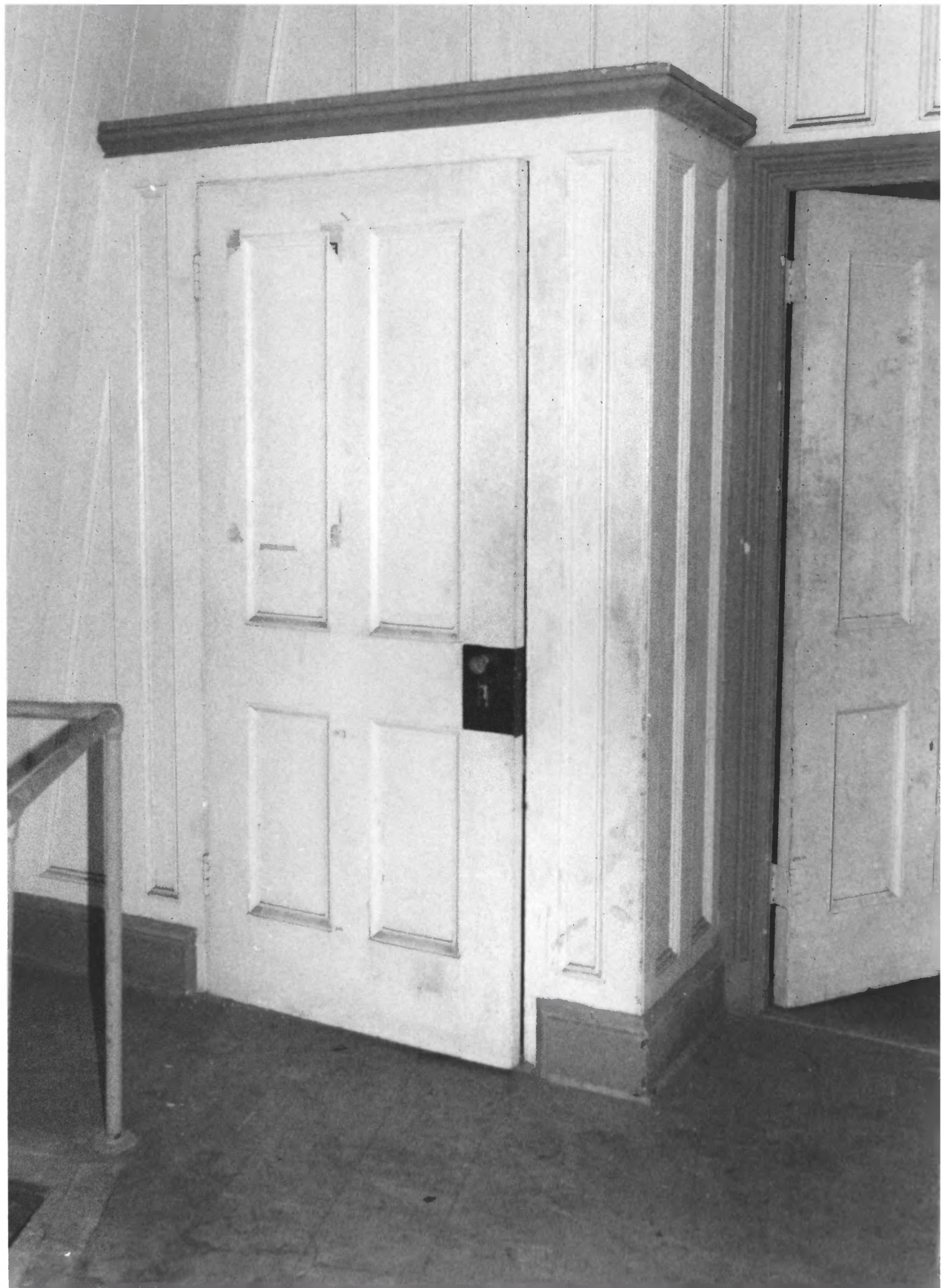




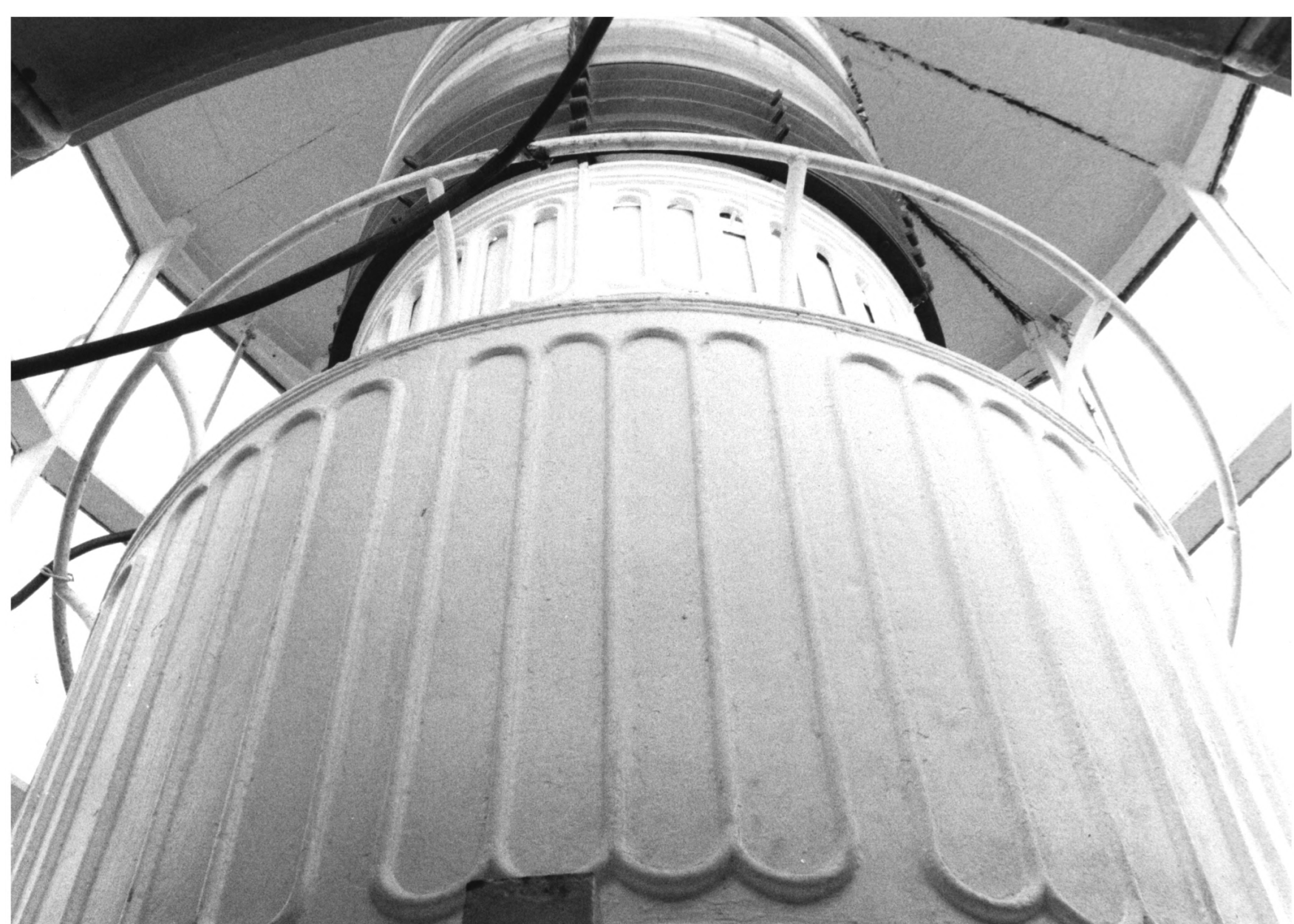
1. Carysfort Reef Lighthouse
2. Key Largo National Marine Sanctuary
3. Russell Wright
4. 4/82
5. NOAA
6. View from northwest
7. Photo # 1



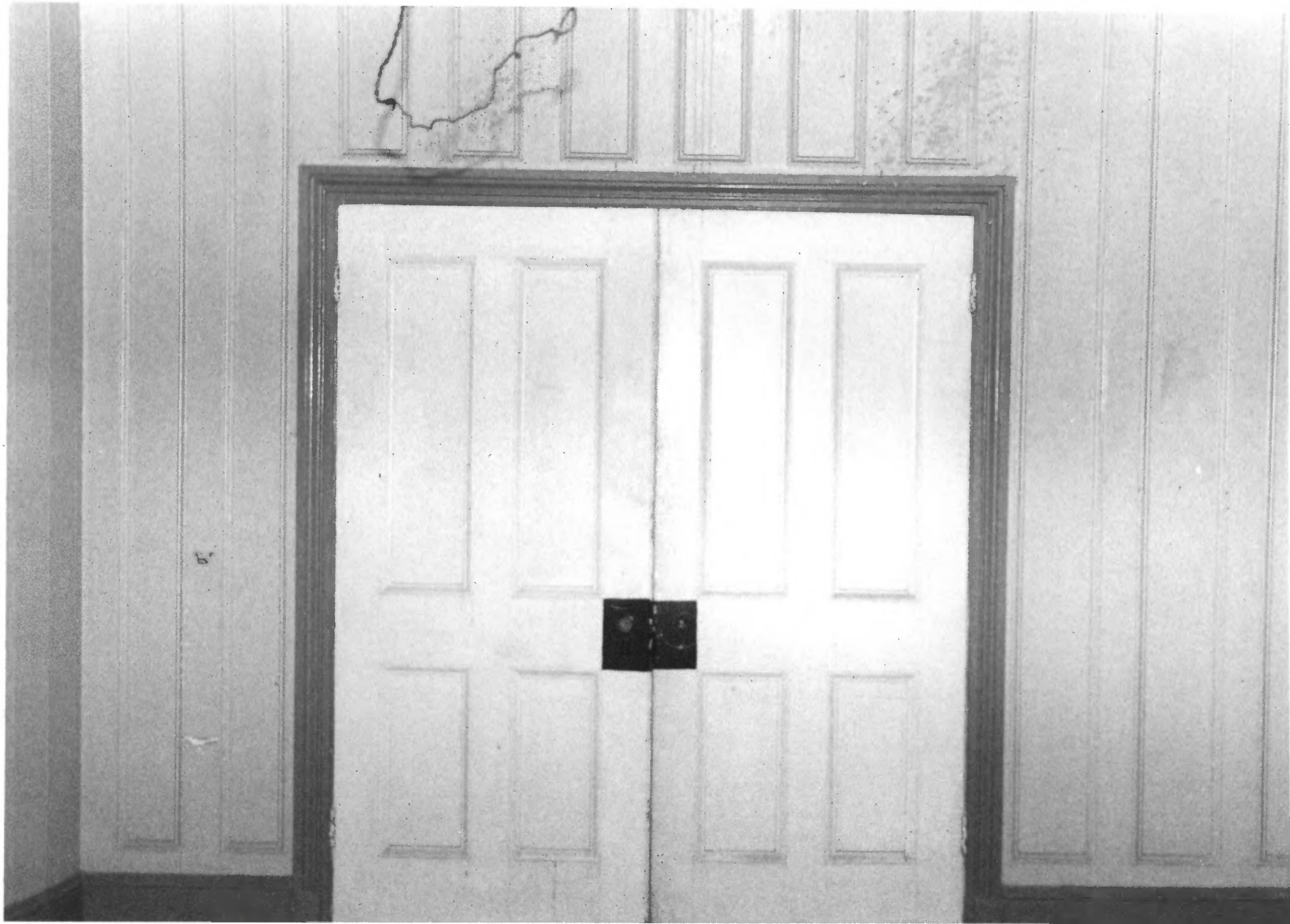
1. Carysfort Reef Lighthouse
2. Key Largo National Marine Sanctuary
3. Stuart M. Grant
4. 10/81
5. NOAA
6. Built-in closet, upper level, Keeper's quarters, looking west
7. Photo # 2



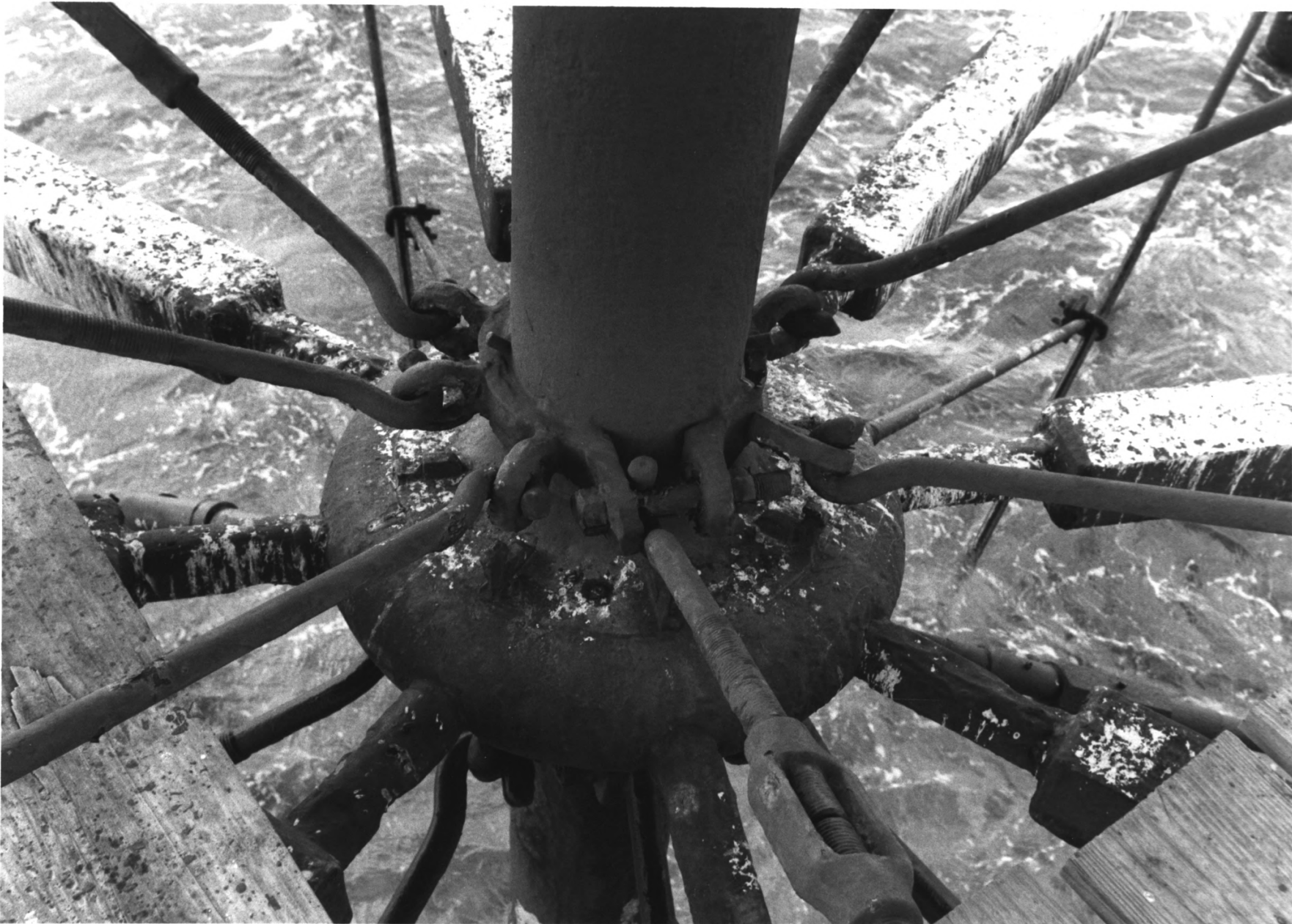
1. Carysfort Reef Lighthouse
2. Key Largo National Marine Sanctuary
3. Stuart M. Grant
4. 10/81
5. NOAA
6. Cat-Walk at light housing level, looking west
7. Photo # 3



1. Carysfort Reef Lighthouse
2. Key Largo National Marine Sanctuary
3. Stuart M. Grant
4. 10/81
5. NOAA
6. Detail of cast iron fresnel lantern housing,
looking north
7. Photo # 4



1. Carysfort Reef Lighthouse
2. Key Largo National Marine Sanctuary
3. Stuart M. Grant
4. 10/81
5. NOAA
6. Double doors in Cross-wall, upper level, NE room, looking west
7. Photo # 5



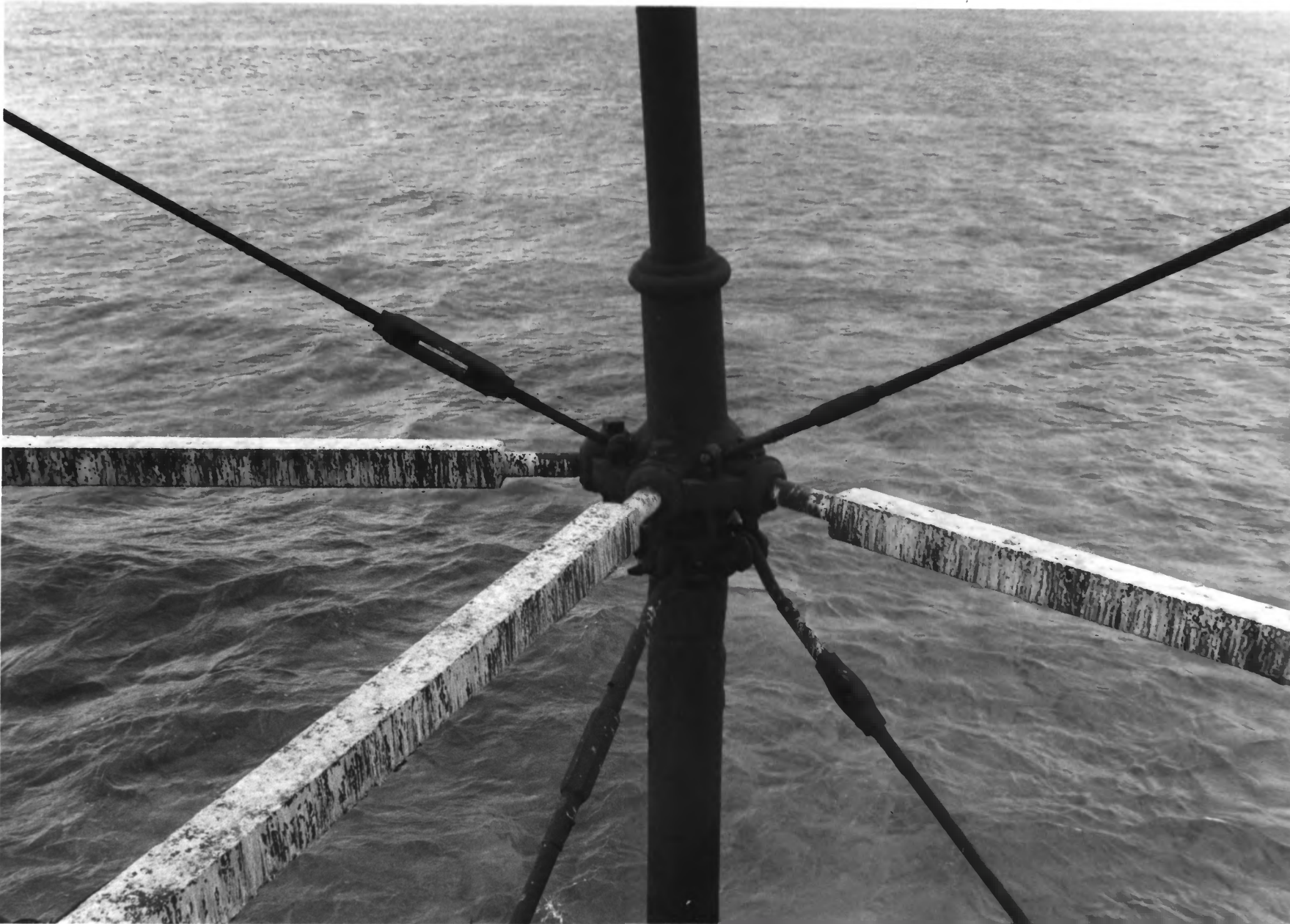
1. Carysfort Reef Lighthouse
2. Key Largo National Marine Sanctuary
3. Russell Wright
4. 4/82
5. NOAA
6. Central socket, foundation pile level, with iron beams and tie rods
7. Photo # 6



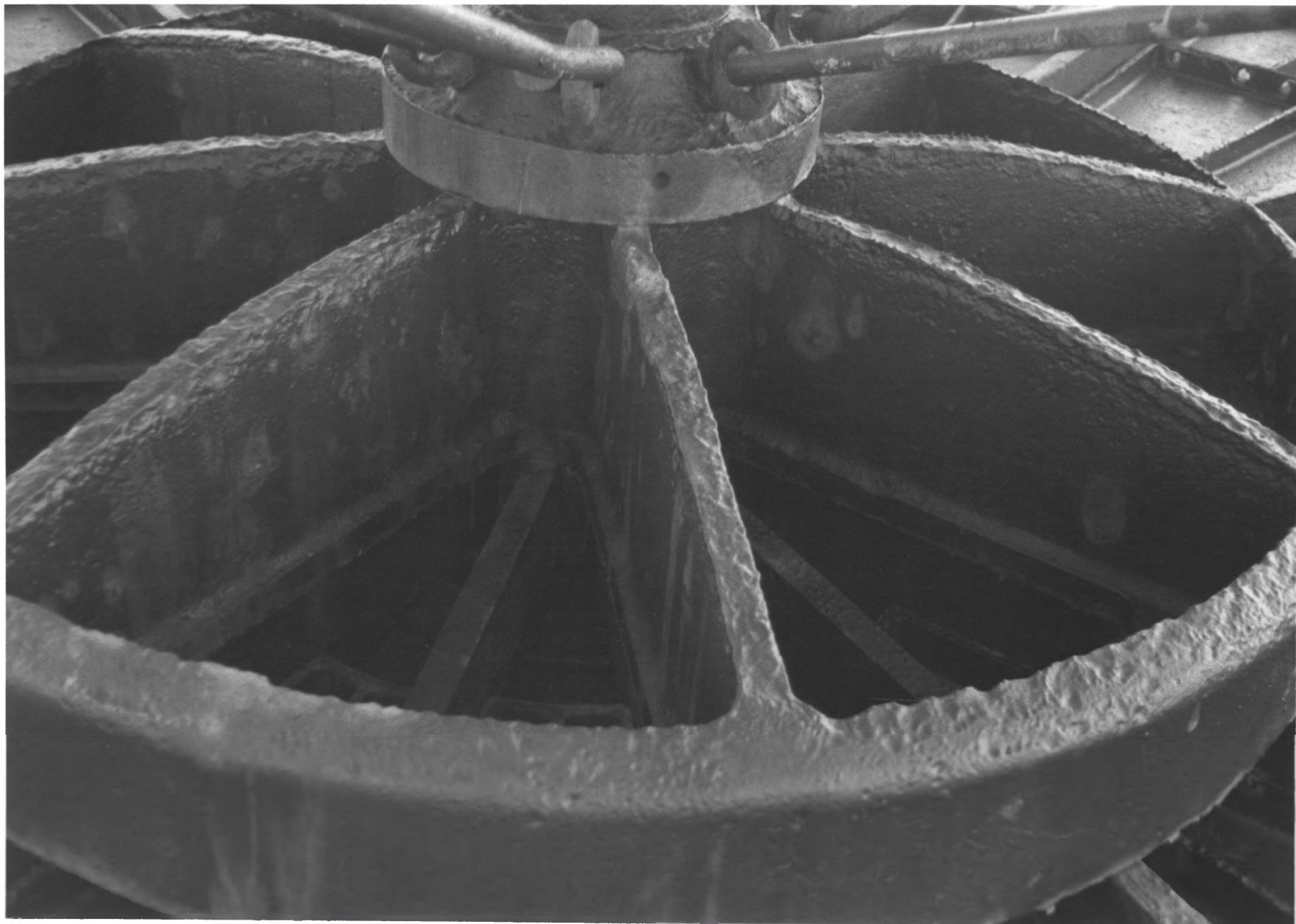
1. Craysfort Reef Lighthouse
2. Key Largo National Marine Sanctuary
3. Stuart M. Grant
4. 10/81
5. NOAA
6. Stair to light platform, at upper level of Keeper's quarters, looking southeast
7. Photo # 7



1. Carysfort Reef Lighthouse
2. Key Largo National Marine Sanctuary
3. Russell Wright
4. 4/82
5. NOAA
6. Platform at level of fresnel lens, light level
7. Photo # 8



1. Carysfort Reef Lighthouse
2. Key Largo National Marine Sanctuary
3. Russell Wright
4. 4/82
5. NOAA
6. Peripheral cast iron pile-column with iron
box-beams and tie rods
7. Photo # 9



1. Carysfort Reef Lighthouse
2. Key Largo National Marine Sanctuary
3. Russell Wright
4. 4/82
5. NOAA
6. Main cast-iron support ring at underside of
lower level of tower
7. Photo # 10