



RV JOHN N. COBB

KING CO., WASHINGTON

HOWARD MILLER OF THE JOHNSON PARTNERSHIP

OCTOBER 28, 2008

NEGATIVE SHEET 7492#3

VIEWING AT PORT BOW

1



RV JOHN N. COBB

KING CO., WASHINGTON

HOWARD MILLER OF THE JOHNSON PARTNERSHIP

OCTOBER 28, 2008

NEGATIVE SHEET 7492 #5

VIEWING AT BOW

2



NOAA
R 552

ORER

12

100 FT

RV JOHN N. COBB

KING CO., WASHINGTON

HOWARD MILLER OF THE JOHNSON PARTNERSHIP

OCTOBER 28, 2008

NEGATIVE SHEET 7492 #9

VIEWING AT STARBOARD, FORWARD

3



JAMES N. COBB

NOAA
R552

RV JOHN N. COBB

KING COUNTY, WASHINGTON

HOWARD MILLER OF THE JOHNSON PARTNERSHIP

OCTOBER 28, 2008

NEGATIVE SHEET 7492 #13

VIEWING AT STARBOARD PROFILE

4



RV JOHN N. COBB

KING COUNTY, WASHINGTON

HOWARD MILLER OF THE JOHNSON PARTNERSHIP

OCTOBER 28, 2008

CROPPED IN FROM NEGATIVE, SHEET 7492 #19

VIEWING AT STARBOARD AFT

5



RV JOHN N. COBB

KING COUNTY, WASHINGTON

HOWARD MILLER OF THE JOHNSON PARTNERSHIP

OCTOBER 28, 2008

NEGATIVE SHEET 7807 #14

VIEWING AT WATERHOUSE

6



RV JOHN N COBB

KING COUNTY, WASHINGTON

HOWARD MILLER OF THE JOHNSON PARTNERSHIP

OCTOBER 28, 2008

NEGATIVE SHEET 7807 #12

VIEWING AFT STARBOARD SIDE MAIN DECK

7



RV JOHN N COBB

KING COUNTY, WASHINGTON

HOWARD MILLER OF THE JOHNSON PARTNERSHIP

OCTOBER 28, 2008

NEGATIVE SHEET 7492 #33

VIEWING AT FORE DECK

8



RV JOHN N COBB

KING COUNTY, WASHINGTON

HOWARD MILLEK OF THE JOHNSON PARTNERSHIP

OCTOBER 28, 2008

NEGATIVE SHEET 7807 #8

VIEWING AT AFT, MAIN DECK

9



RV JOHN N COBB

KING COUNTY, WASHINGTON

HOWARD MILLER OF THE JOHNSON PARTNERSHIP

OCTOBER 28, 2008

NEGATIVE SHEET 7807 #16

VIEWING FORWARD FROM AFT, MAIN DECK

10



RV JOHN N COBB

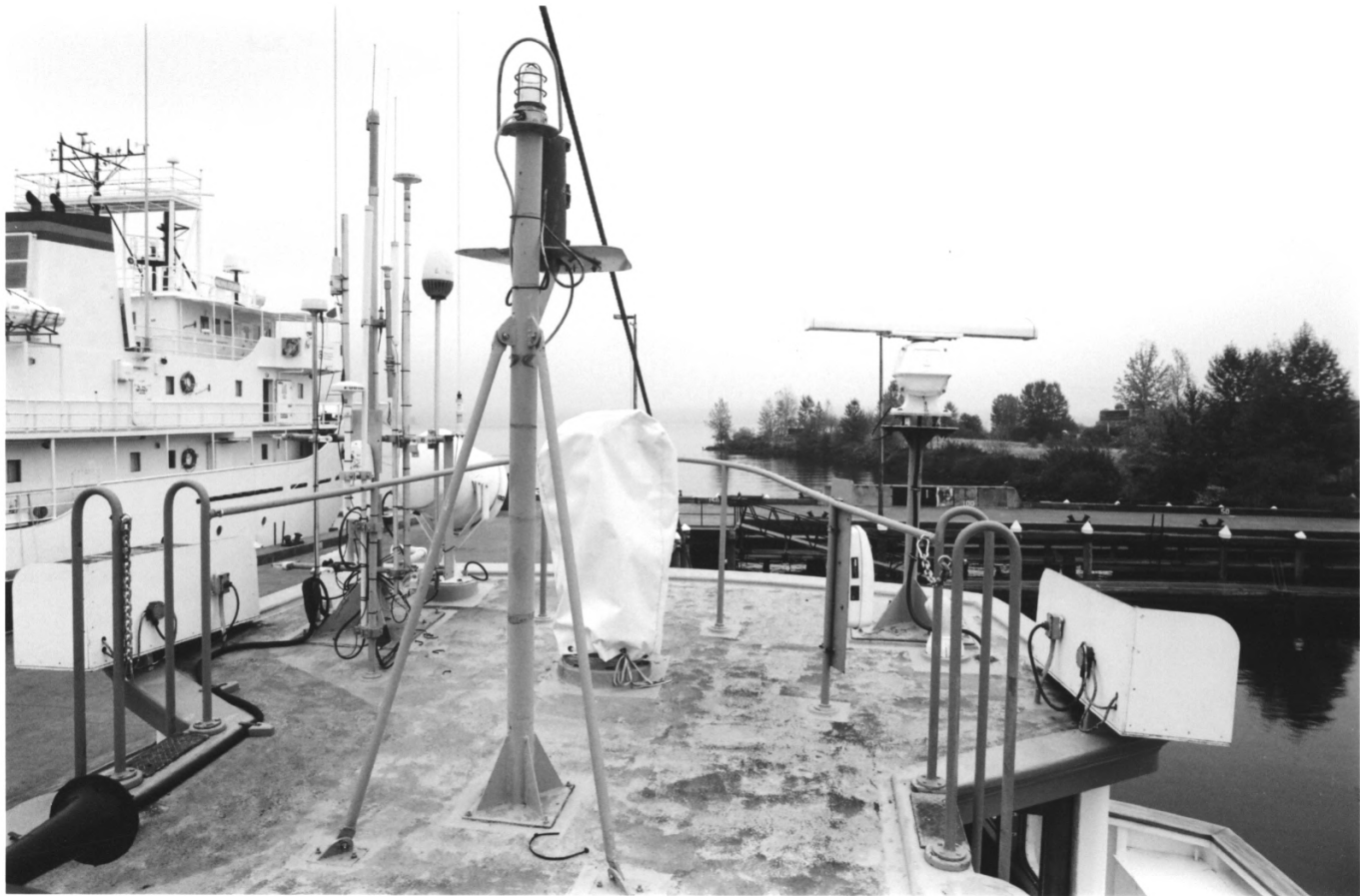
KING COUNTY, WASHINGTON

HOWARD MILLER OF THE JOHNSON PARTNERSHIP

OCTOBER 28, 2008

NEGATIVE SHEET 7492 #27

VIEWING FORWARD, STARBOARD SIDE
MAIN DECK



RV JOHN N COBB

KING COUNTY, WASHINGTON

HOWARD MILLER OF THE JOHNSON PARTNERSHIP

OCTOBER 28, 2008

NEGATIVE SHEET 7492 # 24

VIEWING AT HOUSE TOP

12



RV JOHN N COBB

KING COUNTY, WASHINGTON

HOWARD MILLER OF THE JOHNSON PARTNERSHIP

OCTOBER 28, 2008

NEGATIVE SHEET 7492 # 28

VIEWING AT STARBOARD SHIP'S BOAT

13



RV JOHN N COBB

KING COUNTY, WASHINGTON

HOWARD MILLER OF THE JOHNSON PARTERSHIP

OCTOBER 28, 2008

NEGATIVE SHEET 7492 #22

VIEWING AT MAST

14



RV JOHN N COBB

KING COUNTY, WASHINGTON

HOWARD MILLER OF THE JOHNSON PARTNERSHIP

OCTOBER 28, 2008

NEGATIVE SHEET 7807 #36

VIEWING AT INTERIOR OF WHEEL HOUSE

15



RY JOHN N COBB

KING COUNTY, WASHINGTON

HOWARD MILLER OF THE JOHNSON PARTNERSHIP

OCTOBER 28, 2008

NEGATIVE SHEET 7808 # 29

VIEWING AT RADIO ROOM & CHART ROOM

16



RV JOHN N COBB

KING COUNTY, WASHINGTON

HOWARD MILLER OF THE JOHNSON PARTNERSHIP

OCTOBER 28, 2008

NEGATIVE SHEET 7808 #5

VIEWING AT FORWARD SCIENTISTS'

STATE ROOM, MAIN DECK



RY JOHN N COBB

KING COUNTY, WASHINGTON

HOWARD MILLER OF THE JOHNSON PARTNERSHIP

OCTOBER 28, 2008

NEGATIVE SHEET 7808 #1

VIEWING AT GALLEY AND COMPANION-WAY

18



RY JOHN N. COBB

KING COUNTY, WASHINGTON

HOWARD MILLER OF THE JOHNSON PARTNERSHIP

OCTOBER 28, 2008

NEGATIVE SHEET 7808 #3

VIEWING AT MESS

19



RV JOHN COBB

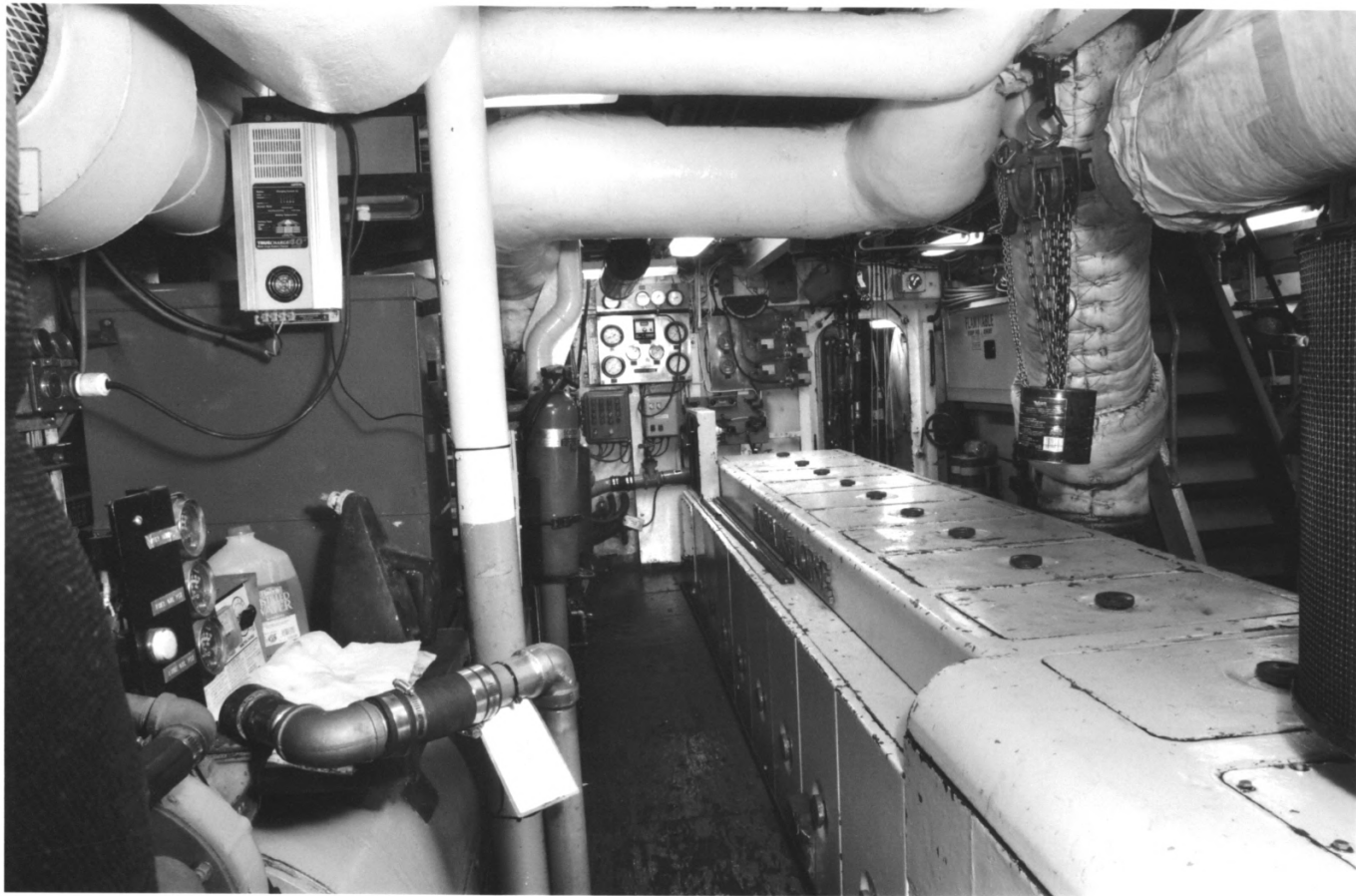
KING COUNTY WASHINGTON

HOWARD MILLER OF THE JOHNSON PARTNERSHIP

OCTOBER 28, 2008

NEGATIVE SHEET 7808 #8

VIEWING AT FORWARD CREW QUARTERS
FROM PORTSIDE



RV JOHN N COBB

KING COUNTY, WASHINGTON

HOWARD MILLER OF THE JOHNSON PARTNERSHIP

OCTOBER 28, 2008

NEGATIVE SHEET 7808, #16

VIEWING AFT IN ENGINE ROOM

21



RV JOHN A COBB

KING COUNTY, WASHINGTON

HOWARD MILLER OF THE JOHNSON PARTNERSHIP

OCTOBER 28, 2008

NEGATIVE SHEET 7808 #18

VIEWING FORWARD IN ENGINE ROOM



RV JOHN N COBB

KING COUNTY, WASHINGTON

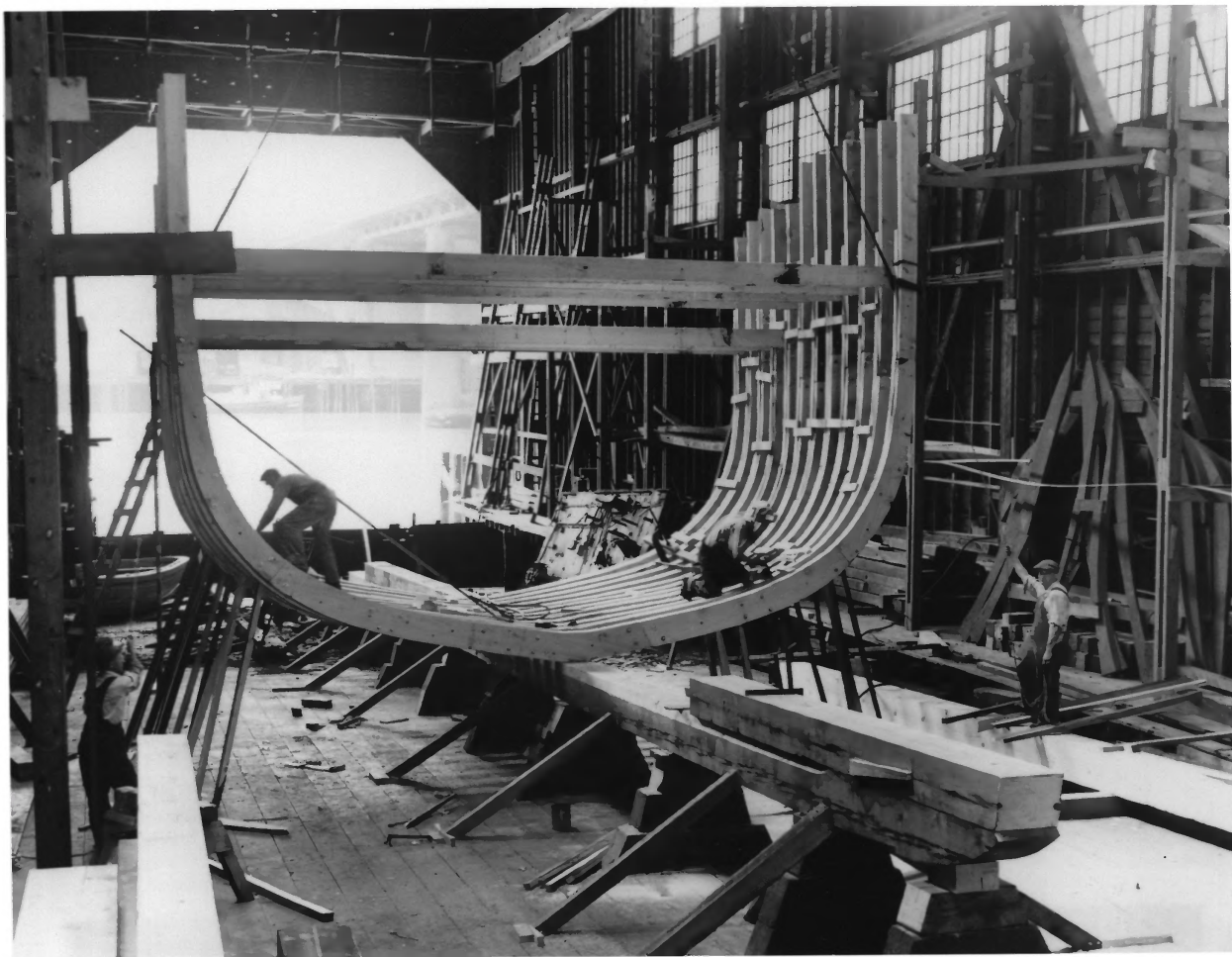
HOWARD MILLER OF THE JOHNSON PARTNERSHIP

OCTOBER 28 2008

NEGATIVE SHEET 7808 #21

VIEWING AT HOLD WORK ROOM

23



RV JOHN N COBB

KING CO., WASHINGTON

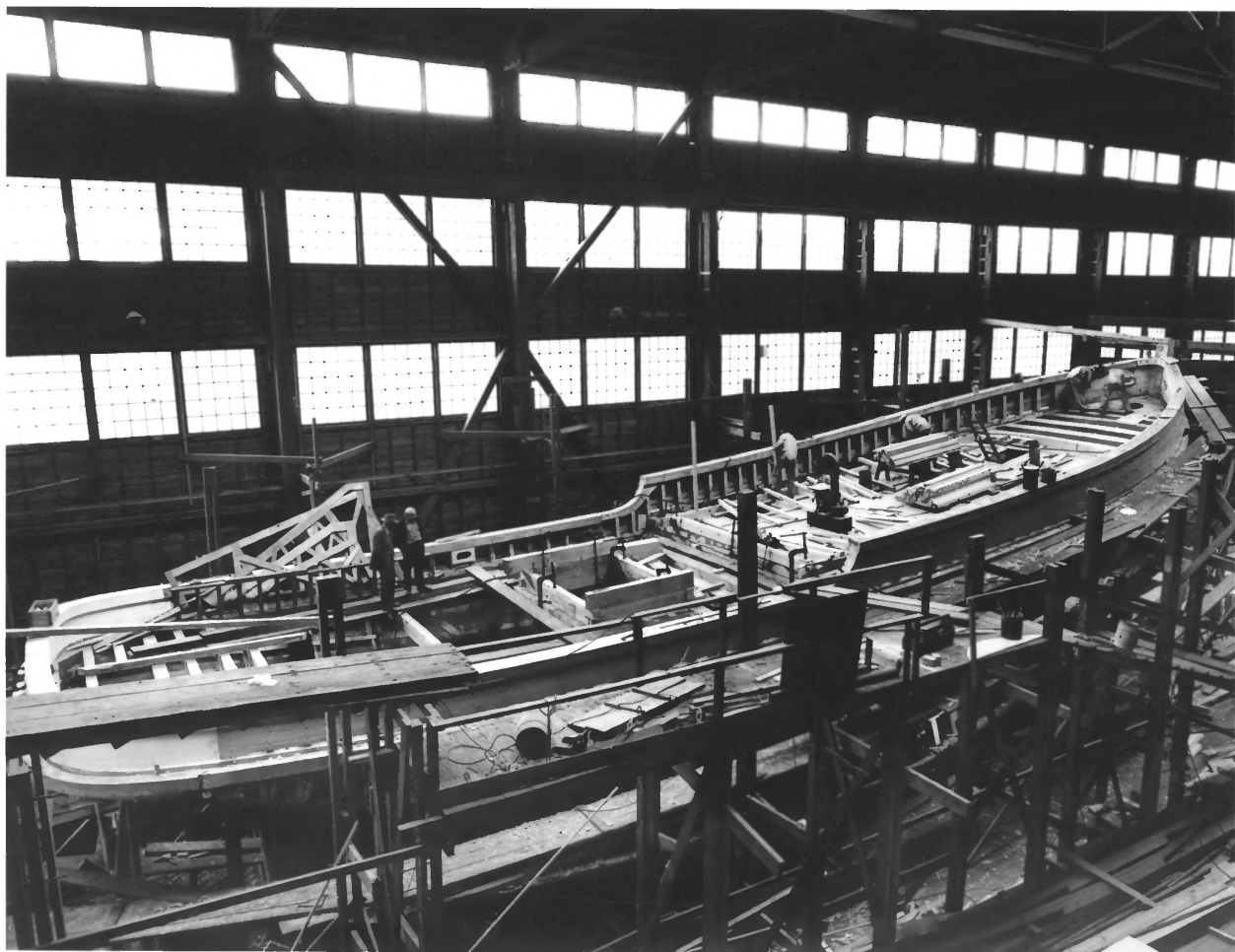
UNKNOWN PHOTOGRAPHER

CIRCA 1949

REPRODUCED FROM A PRINT IN THE COLLECTION OF
NOAA NW REGIONAL OFFICE 7600 SANDPOINT WAY,
SEATTLE, WA

UNDER CONSTRUCTION IN THE WESTERN BOAT BUILDING

1P



RV JOHN N COBB

KING CO. WASHINGTON

UNKNOWN PHOTOGRAPHER

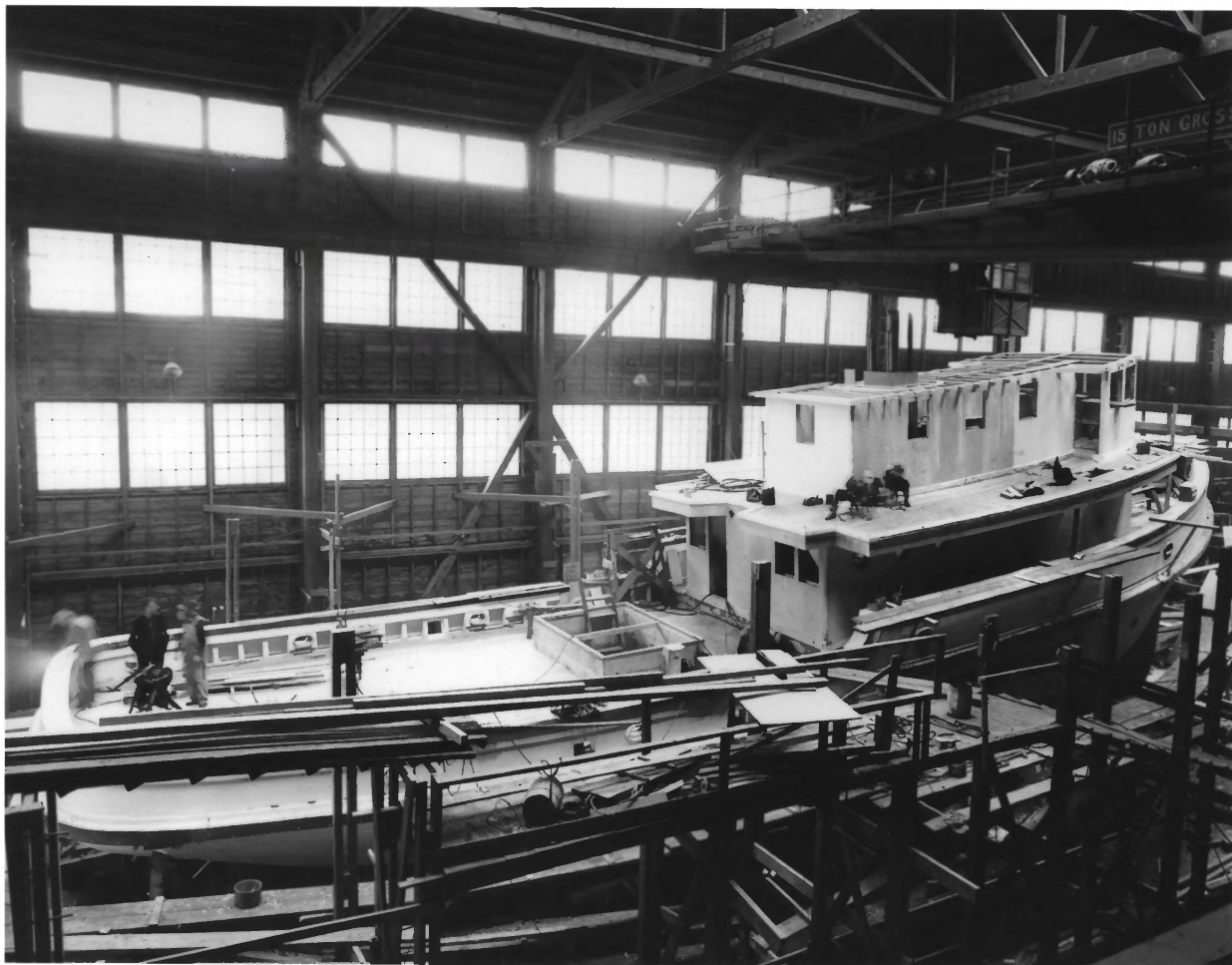
CA 1949

REPRODUCED FROM A PRINT IN THE COLLECTION OF

NOAA NW REGIONAL OFFICE, 7600 SANDPOINT WAY
SEATTLE, WA.

UNDER CONSTRUCTION IN THE WESTERN BOAT BUILDING

ZP



RV JOHN N COBB

KING CO., WASHINGTON

UNKNOWN PHOTOGRAPHER

CA 1949

REPRODUCED FROM A PRINT IN THE COLLECTION OF

NOAA NW REGIONAL OFFICE, 7600 SANDPOINT WAY

SEATTLE, WA

UNDER CONSTRUCTION IN THE WESTERN BOAT BUILDING

3P



RV JOHN N COBB

KING CO., WASHINGTON

UNKNOWN PHOTOGRAPHER

CA. 1949

REPRODUCED FROM A PRINT IN THE COLLECTION OF
NOAA NW REGIONAL OFFICE, 7600 SANDPOINT WAY,
SEATTLE, WA

UNDER CONSTRUCTION IN THE WESTERN BOAT BUILDING,
VIEWING AT STEM



JOHN NO. COBB
F.W.S. 1601

RV JOHN N. COBB

KING CO., WASHINGTON

UNKNOWN PHOTOGRAPHER

JANUARY 1950

REPRODUCED FROM A PRINT IN THE COLLECTION OF

NOAA NW REGIONAL OFFICE, 7600 SANDPOINT WAY,
SEATTLE, WA

UNDER CONSTRUCTION IN THE WESTERN BOAT BUILDING,

VIEWING TOWARD STERN

5#



RV JOHN N COBB

KING CO., WASHINGTON

UNKNOWN PHOTOGRAPHER

JANUARY 1950

REPRODUCED FROM A PRINT IN THE COLLECTION OF
NOAA NW REGIONAL OFFICE, 7600 SANDPOINT WAY,
SEATTLE, WA

UNDER CONSTRUCTION IN THE WESTERN BOAT BUILDING,
VIEWING AT BOW BEFORE LAUNCHING

CP



JOHN N. COBB
F.W.S. 1601

W.P. FULLER & CO.
FULLER & CO. PAINT

RY JOHN N. COBB

KING CO., WASHINGTON
UNKNOWN PHOTOGRAPHER

JANUARY 16, 1950

REPRODUCED FROM A PRINT IN THE COLLECTION OF
NOAA NW REGIONAL OFFICE, 7600 SANDPOINT WAY,
SEATTLE, WA

VIEWING AT STARBOARD SIDE, FORWARD -
DURING VESSEL LAUNCH.

7P



RV JOHN N. COBB

KING CO., WASHINGTON

UNKNOWN PHOTOGRAPHER

CA. 1950

REPRODUCED FROM A PRINT IN THE COLLECTION OF
NOAA NW REGIONAL OFFICE, 7600 SANDPOINTWAY,
SEATTLE, WA

VIEWING FROM RADIO/CHART ROOM TO CAPTAIN'S
STATE ROOM

87



RV JOHN N COBB

KING CO., WASHINGTON

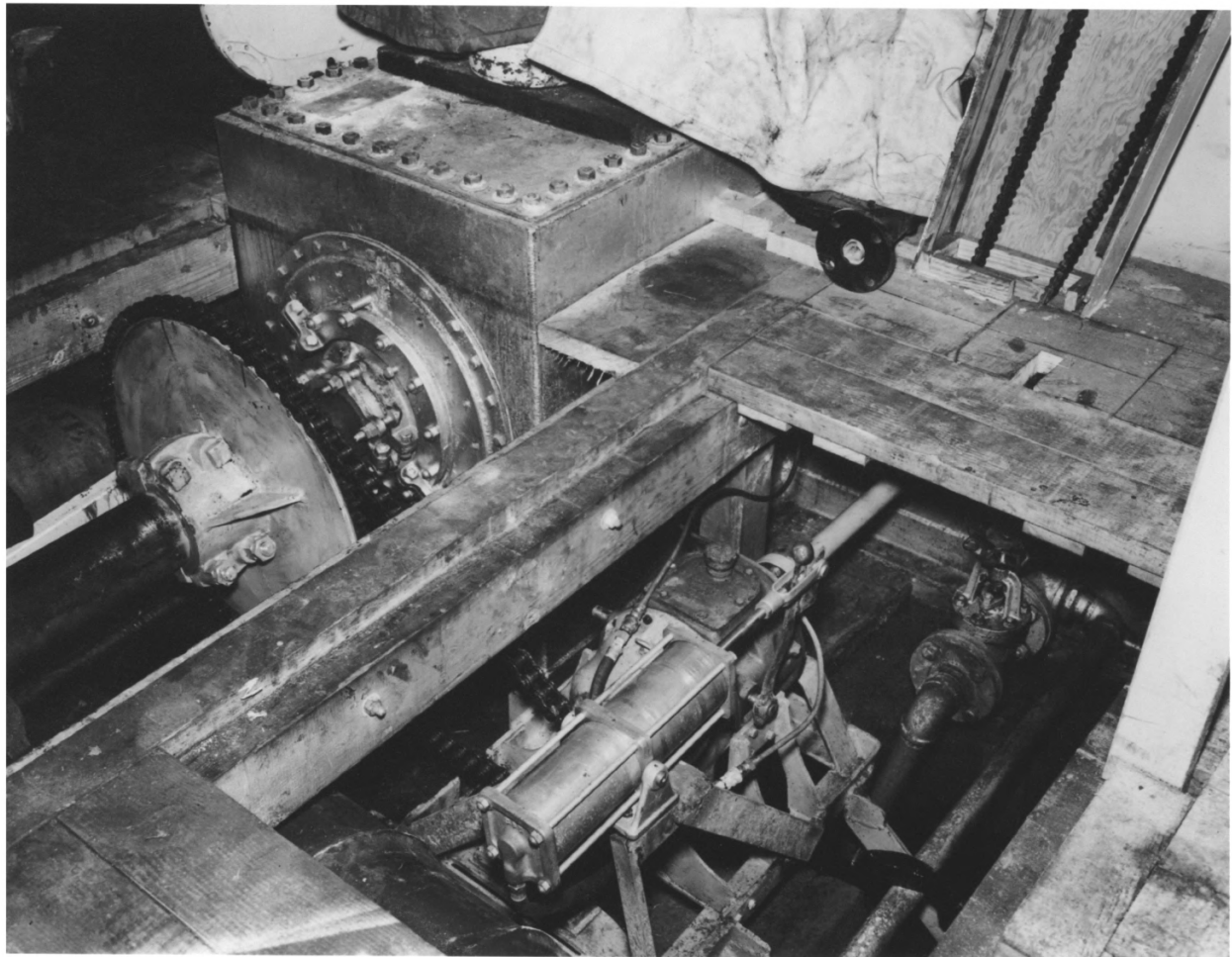
UNKNOWN PHOTOGRAPHER

CA. 1950

REPRODUCED FROM A PRINT IN THE COLLECTION OF
NOAA NW REGIONAL OFFICE, 7600 SANDPOINT WAY,
SEATTLE, WA

VIEWING AT GALLEY

9P



RV JOHN N COBB

KING CO., WASHINGTON

UNKNOWN PHOTOGRAPHER

CA. 1950

REPRODUCED FROM A PRINT IN THE COLLECTION OF
NOAA NW REGIONAL OFFICE, 7600 SANDPOINT WAY,
SEATTLE, WA

VIEWING AT MAIN SHAFT AND SLOW SPEED
TROLLING DEVICE.

10¢



RV JOHN N COBB

KING CO., WASHINGTON

UNKNOWN PHOTOGRAPHER

CA. 1950

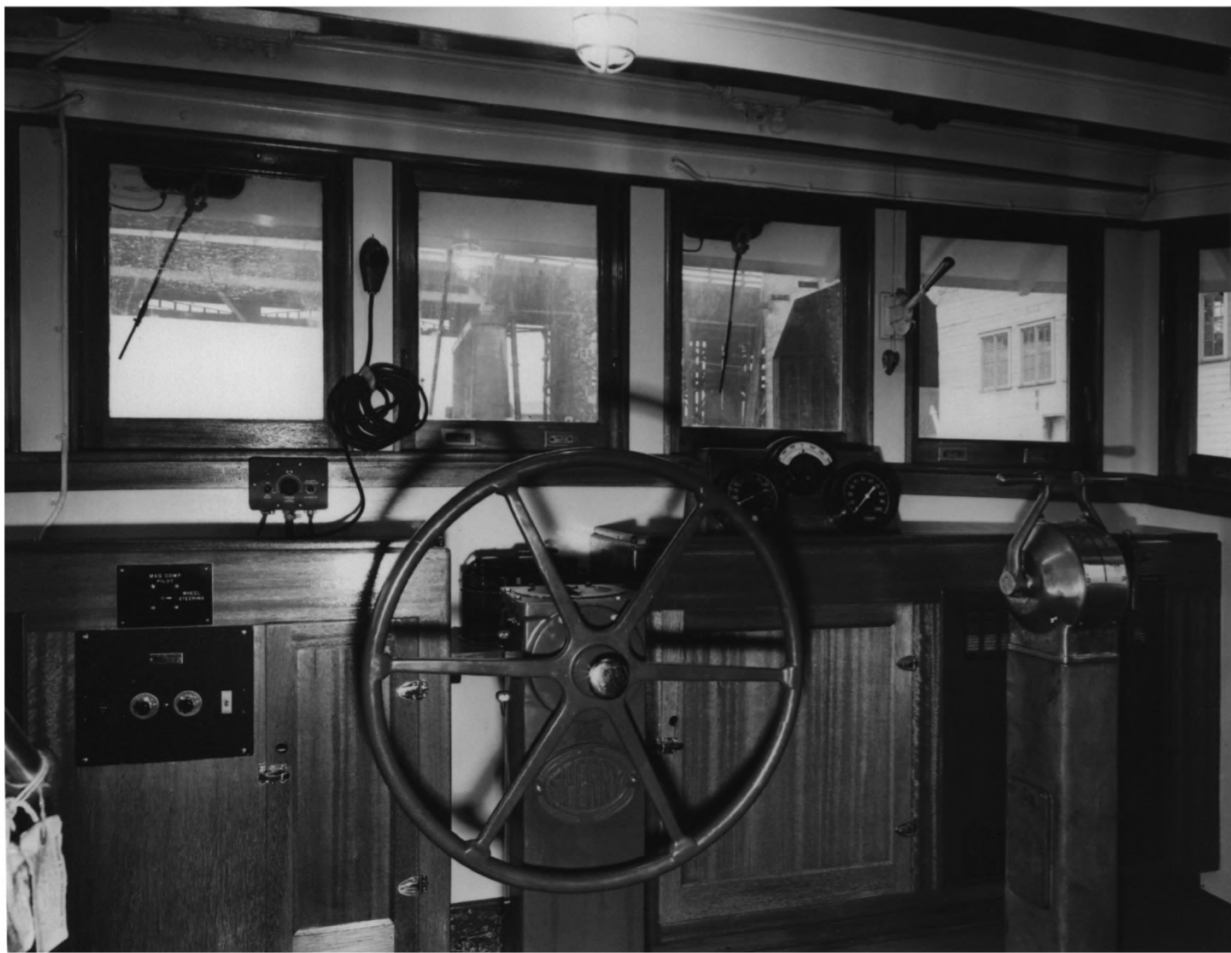
REPRODUCED FROM A PRINT IN THE COLLECTION OF

NOAA NW REGIONAL OFFICE, 7600 SANDPOINT WAY,

SEATTLE, WA

VIEWING AT SONAR AND RADAR STATIONS

117



RV JOHN N COBB

KING CO., WASHINGTON

UNKNOWN PHOTOGRAPHER

CA. 1950

REPRODUCED FROM A PRINT IN THE COLLECTION OF
NOAA NW REGIONAL OFFICE, 7600 SANDPOINT WAY,
SEATTLE, WA

VIEWING AT WHEELHOUSE FORWARD

12 P



JOHN N. COBB
F.W.C. 1601

RV JOHN N COBB

KING CO., WASHINGTON

UNKNOWN PHOTOGRAPHER

CA. 1952

REPRODUCED FROM A PRINT IN THE COLLECTION OF
NOAA NW REGIONAL OFFICE, 7600 SANDPOINT WAY
SEATTLE, WA

VIEWING AT PORT SIDE, UNDERWAY

13P



RY JOHN N COBB

KING CO., WASHINGTON

UNKNOWN PHOTOGRAPHER

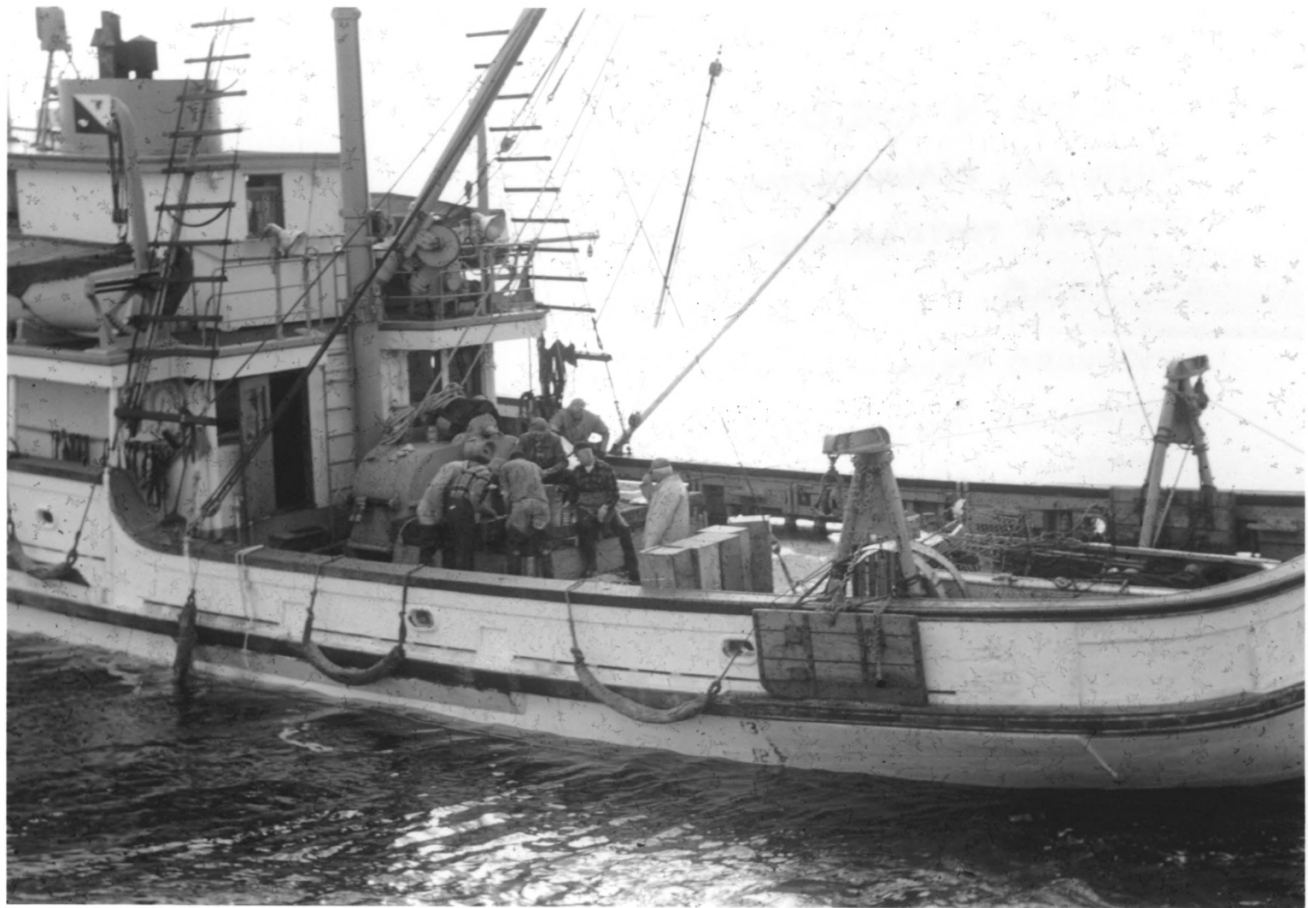
CA. 1958

REPRODUCED FROM A SLIDE IN THE COLLECTION OF:

NOAA NW REGIONAL OFFICE, 7600 SANDPOINT WAY,
SEATTLE, WA

VIEWING STARBOARD / STERN, VESSEL AT WORK

15



RV JOHN N COBB

KING CO., WASHINGTON

UNKNOWN PHOTOGRAPHER

CA. 1958

REPRODUCED FROM A SLIDE IN THE COLLECTION OF
NOAA NW REGIONAL OFFICE, 7600 SANDPOINT WAY,
SEATTLE, WA

VIEWING AT MAIN DECK

25



RV JOHN N COBB

KING CO., WASHINGTON

UNKNOWN PHOTOGRAPHER

CA. 1960

REPRODUCED FROM A SLIDE IN THE COLLECTION OF
NOAA NW REGIONAL OFFICE, 7600 SANDPOINT WAY,
SEATTLE, WA

VIEWING AT PORT STERN

35



RV JOHN N COBB

KING CO., WASHINGTON

UNKNOWN PHOTOGRAPHER

CA 1960

REPRODUCED FROM A SLIDE IN THE COLLECTION OF
NOAA NW REGIONAL OFFICE, 7600 SANDPOINT WAY,
SEATTLE, WA - IMAGE IS FLOPPED

VIEWING AT BOW, RIGGING EXTENDED

45



RV JOHN N COBB

KING CO., WASHINGTON

UNKNOWN PHOTOGRAPHER

CA 1960

REPRODUCED FROM A SLIDE IN THE COLLECTION OF
NOAA NW REGIONAL OFFICE, 7600 SANDPOINT WAY,
SEATTLE WA

VIEWING AT PORT BOW, VESSEL IN DRY DOCK

55



RV JOHN N COBB

KING CO., WASHINGTON

UNKNOWN PHOTOGRAPHER

CA 1960

REPRODUCED FROM A SLIDE IN THE COLLECTION OF
NOAA NW REGIONAL OFFICE, 7600 SANDPOINT WAY NE,
SEATTLE, WA

VIEWING AT STERN, VESSEL IN DRY DOCK

65