



1. Ruins of San Gregorio Mission church, Abo, from the front (south), prior to rehabilitation.

Photos 1-4 by Francis Gott,
November 1935.



2. Church ruins, Abo, November 1935, from the northwest (altar end and starboard side).



3. Mission ruins, Abo, November 1935, from the east. Convento in middle-ground, church seen from left side.



4. Pueblo (foreground) and church (seen from front and starboard) ruins, Abo, November 1935, from southwest. Original beams may be observed halfway up the tower at left.



5. Church from the front (south), after stabilization.

Photo E. K. Reed, October 29, 1940.

LM



6. Church from the north (altar end),
after stabilization. October 29, 1940.



7. Church from the west after
stabilization.
October 29, 1940.



8. Abo Mission from the east after stabilization. October 29, 1940.



9. Church from the southwest after
stabilization. October 29, 1940.



10. Nave of the Abo church, looking toward altar end. October 29, 1940.



11. Kiva in court of monastery.



12. Church and convento during excavation.
May 1939.



13. West wall of nave during stabilization.
May 1939.



14. West side of church. Note beams (original) in center. May 1939.



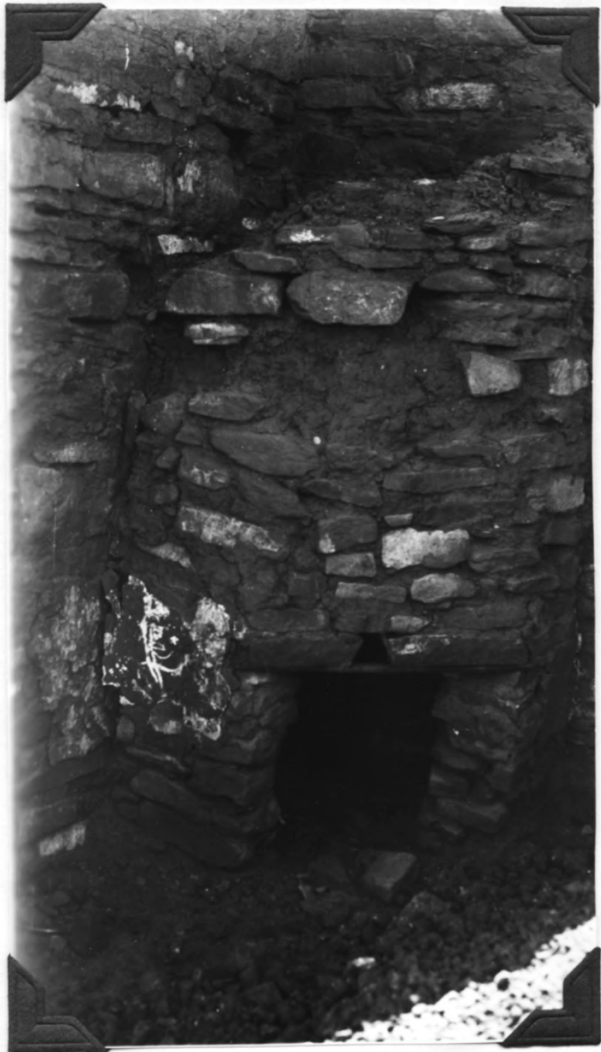
15. Excavation of the convento.
Kiva in foreground. May 1939.



16. Restored stairway to missing choir-loft. May 1939.



17. Stabilized baptistry font, partially restored. May 1939.



18. Chimney in convento, as found.
May 1939.