

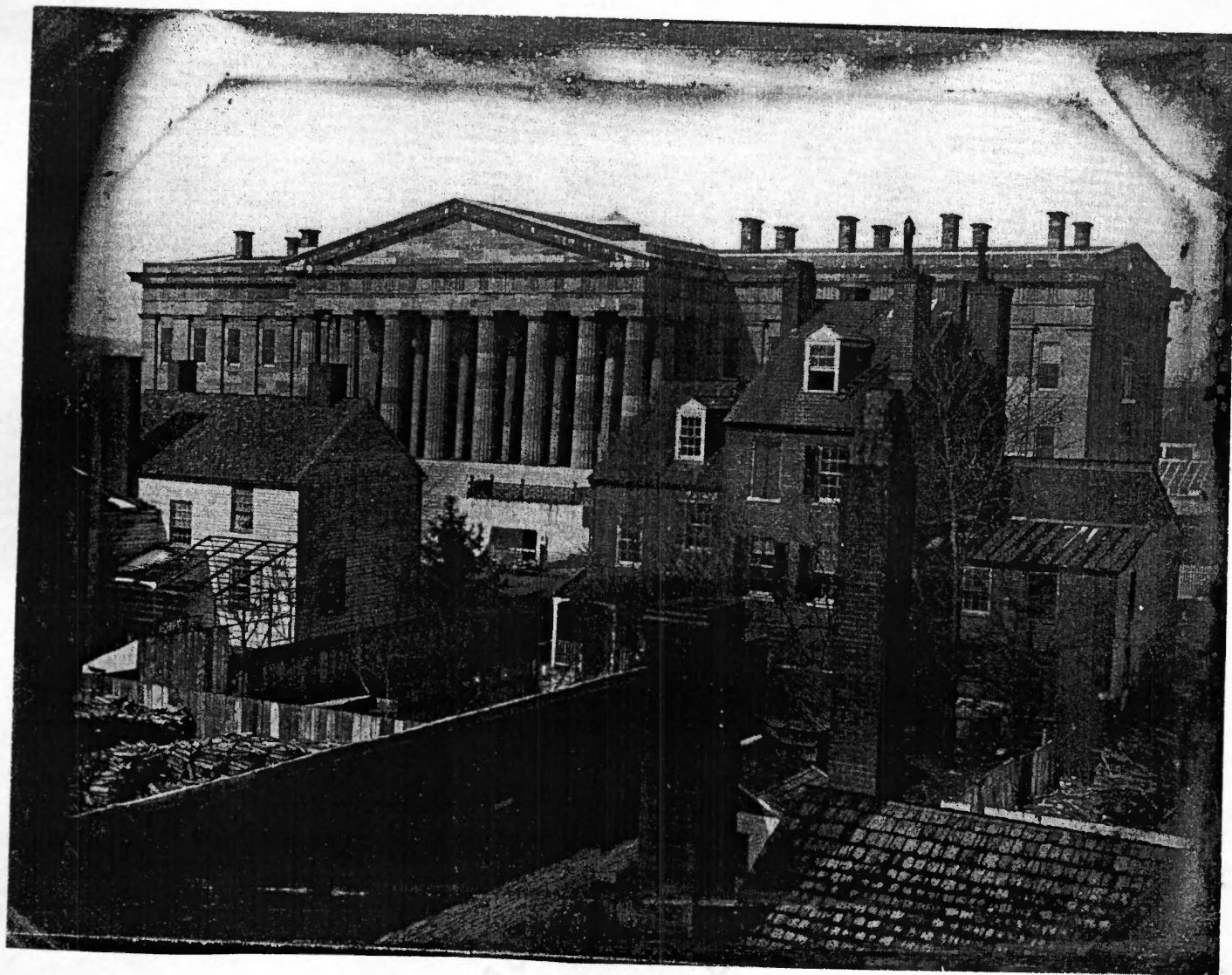
1000 0000 5000

HISTORIC FIGURES

SOUTHAMPTON

CONSTITUTION

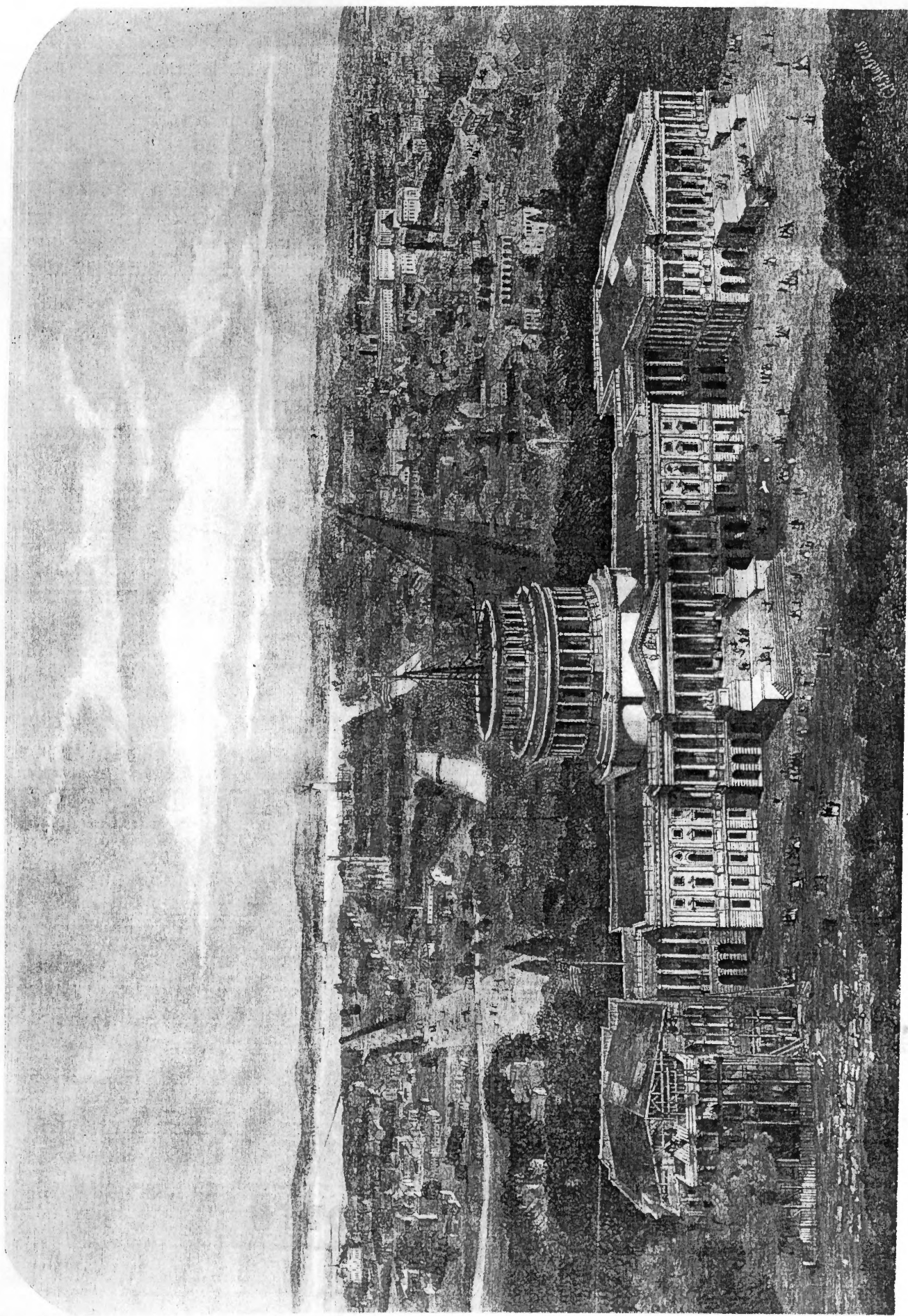




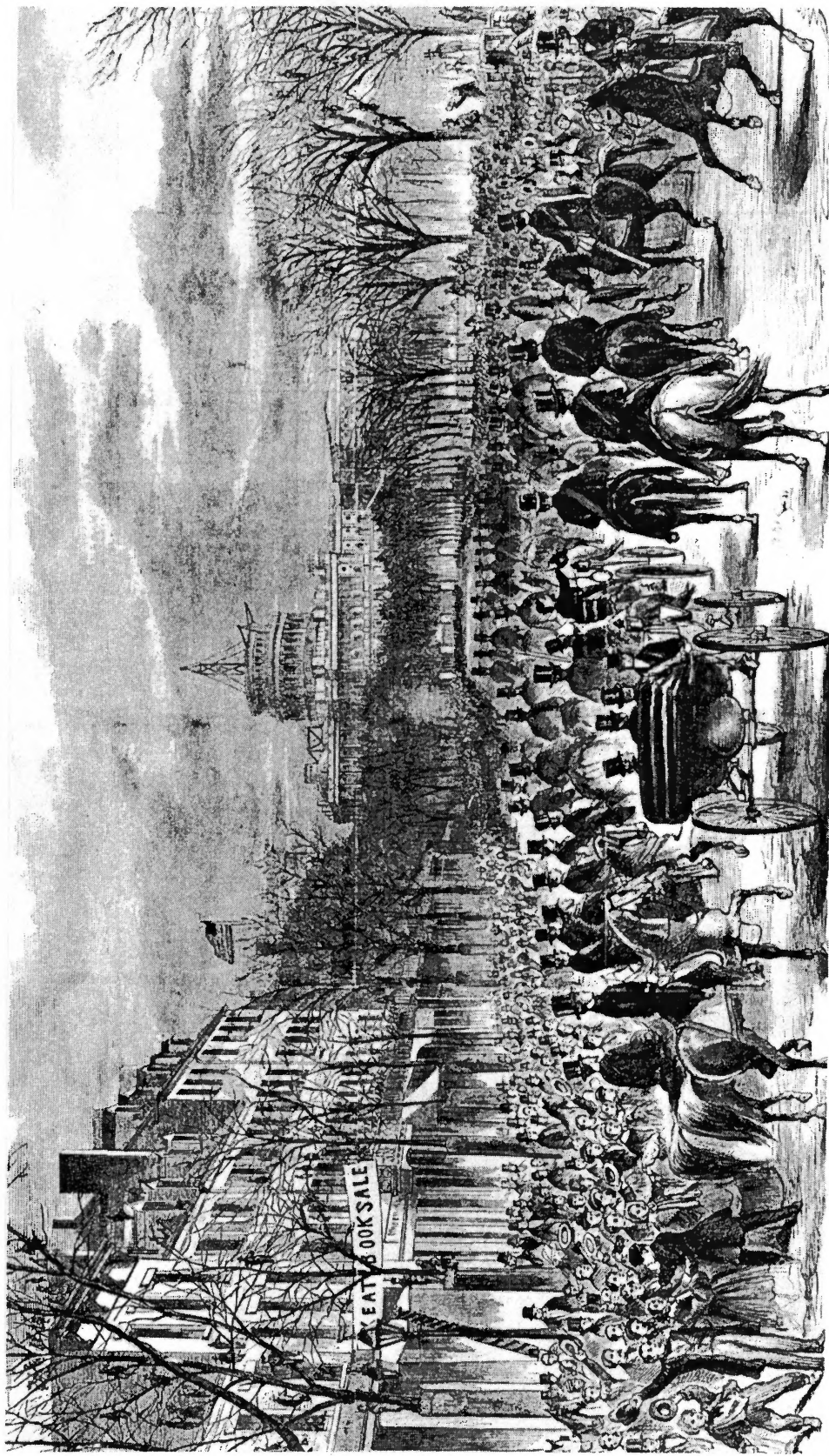
© 1900

1000

1000



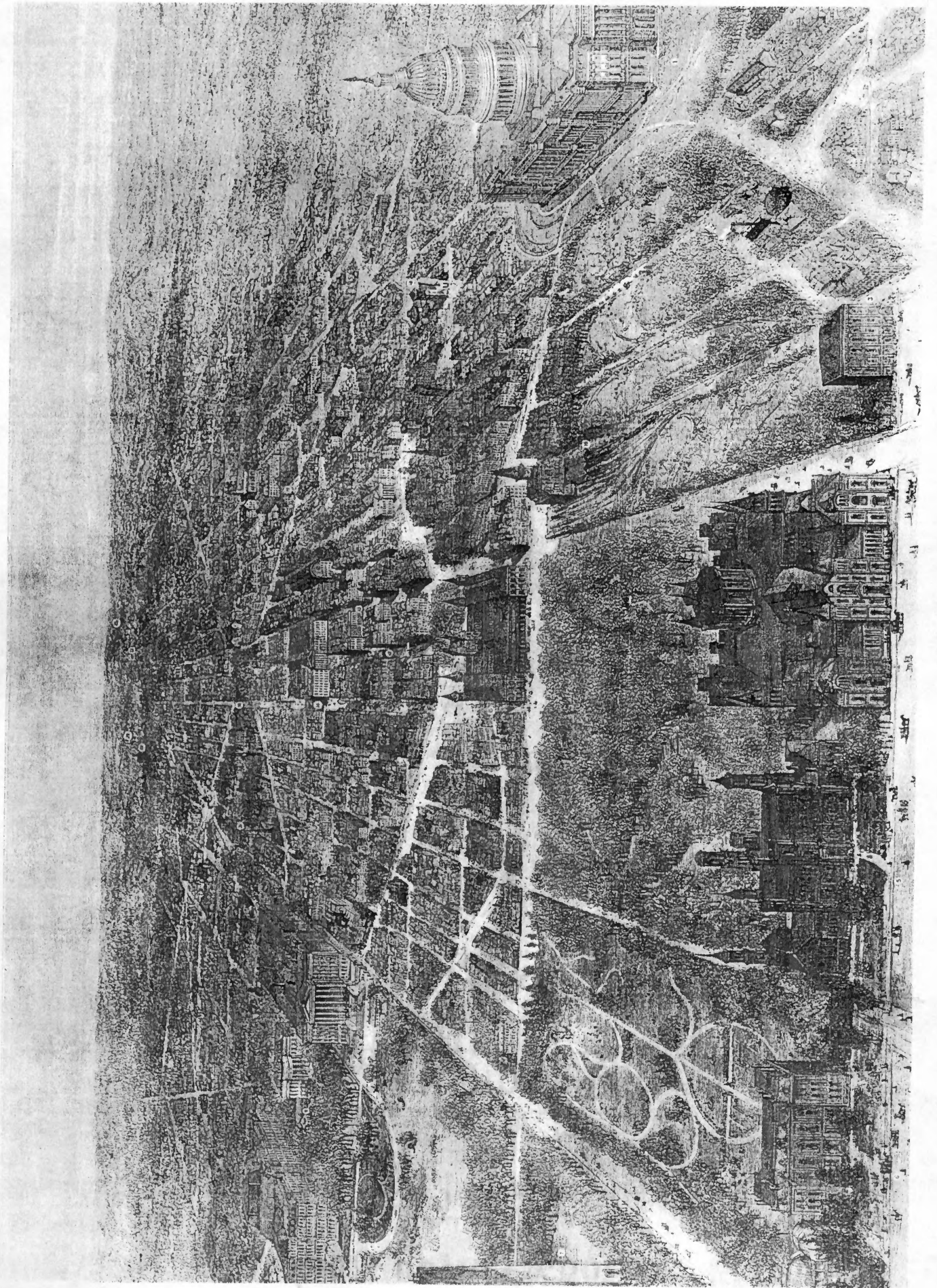
Historic Photograph 3 of 19







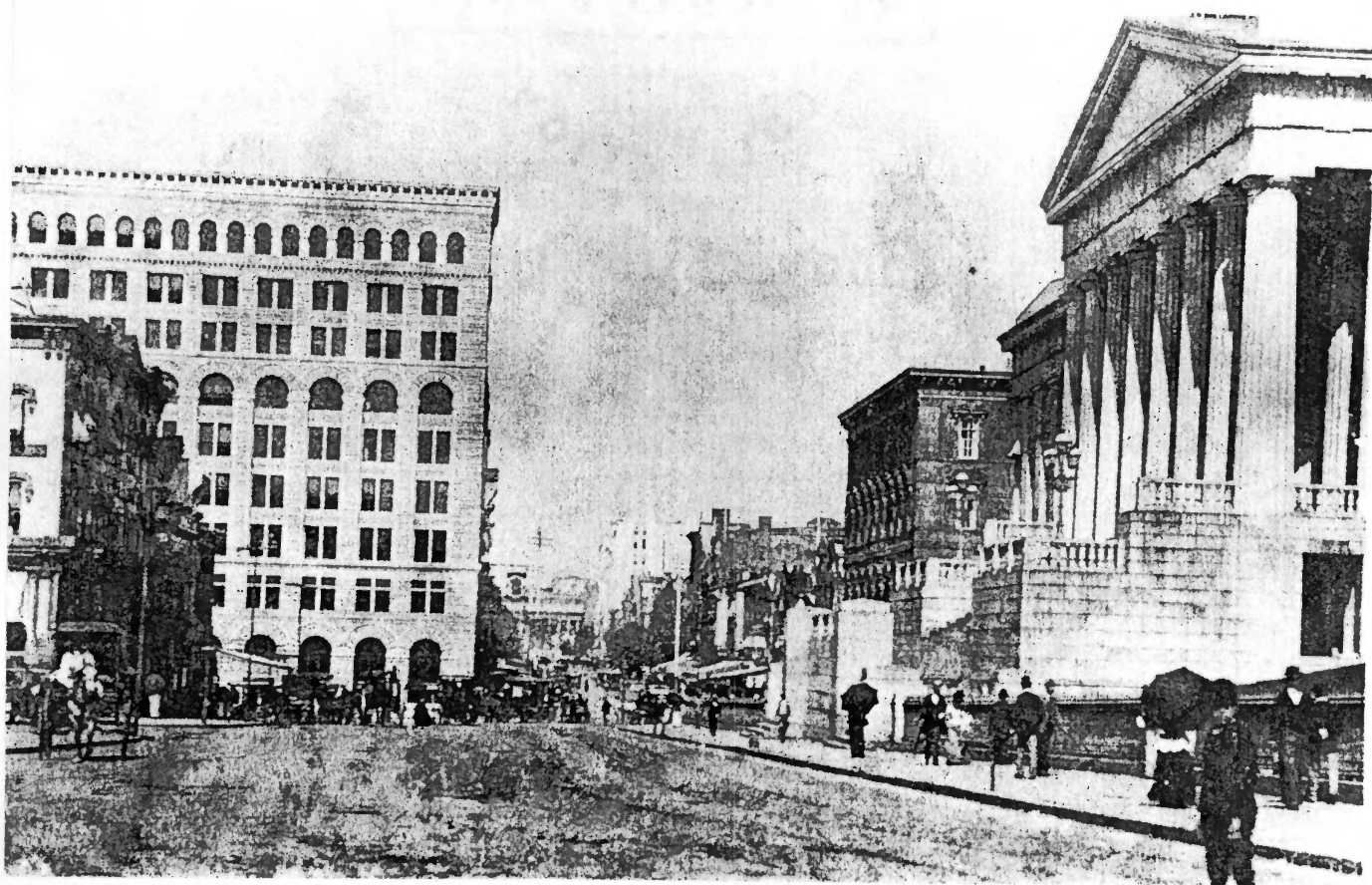
Historic Photograph 6 of 19



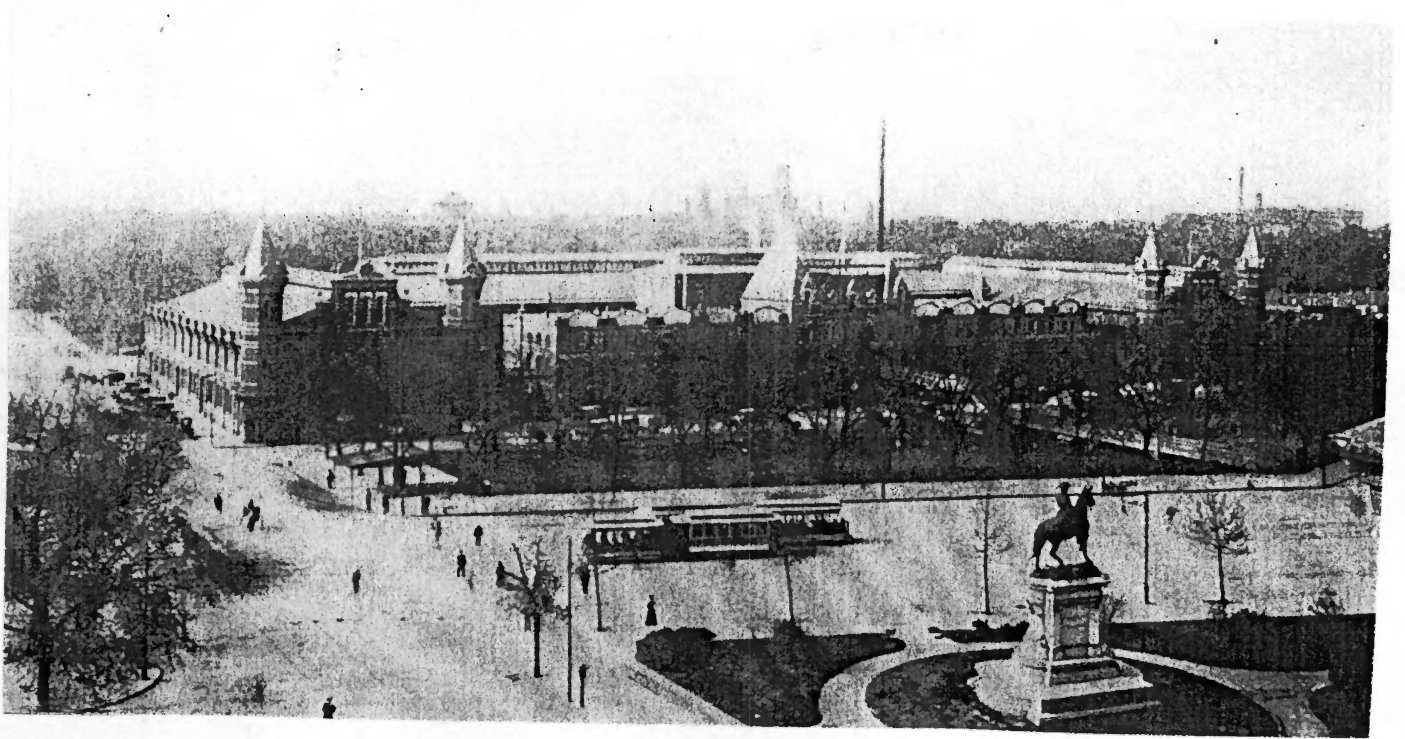
Historic Photograph 7 of 19

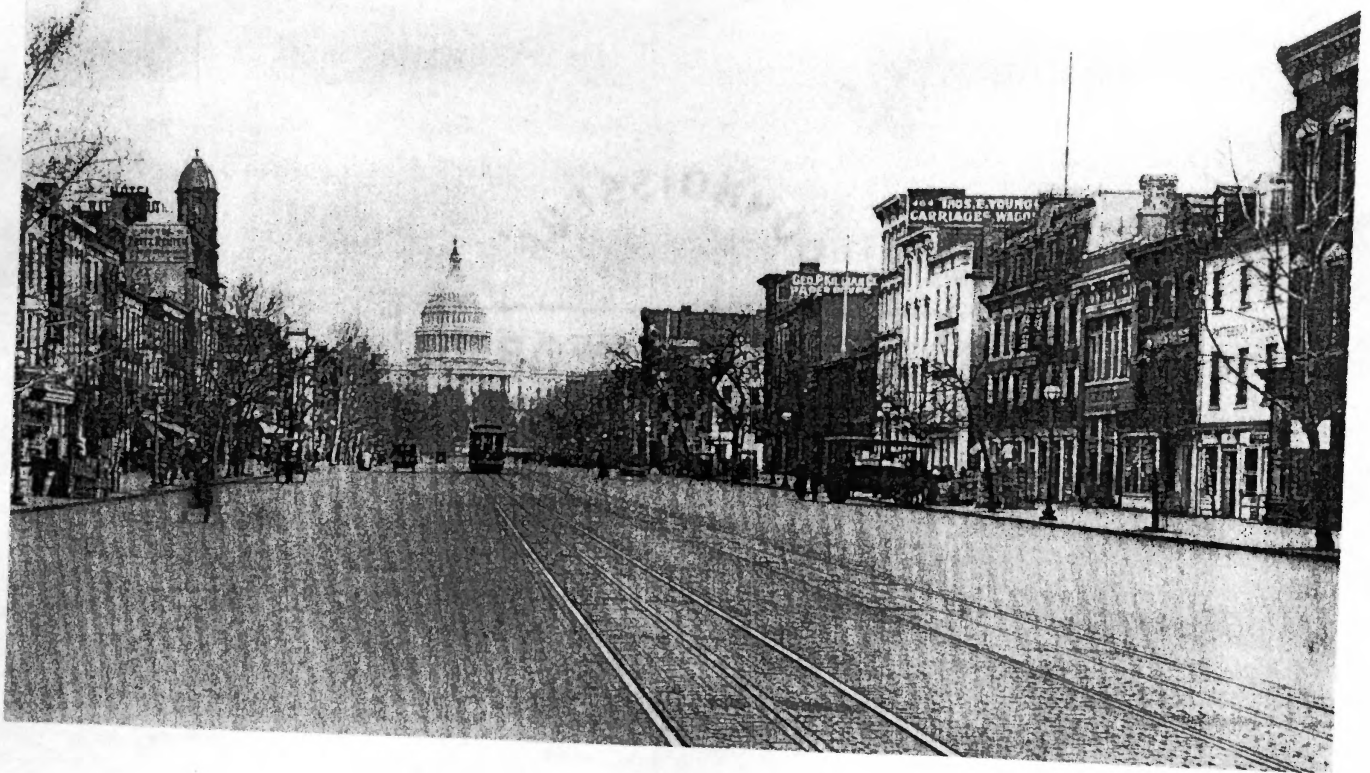




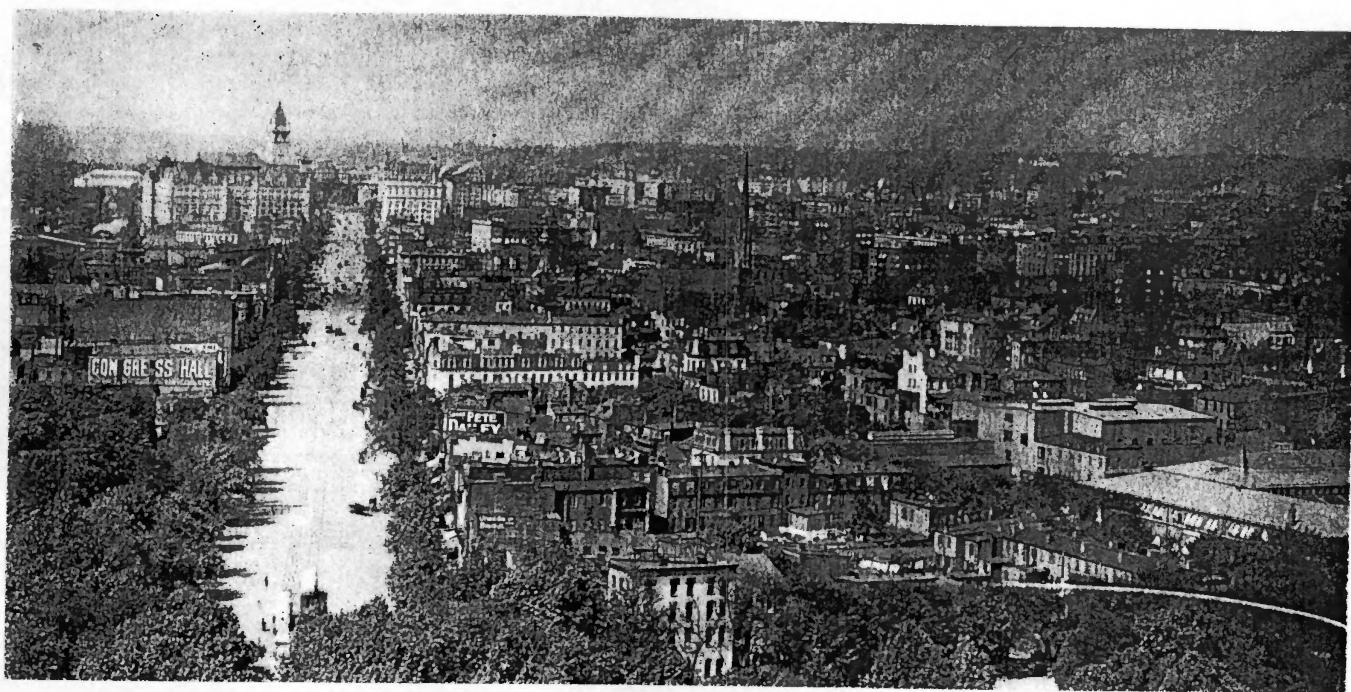


Historic Photograph 9 of 19

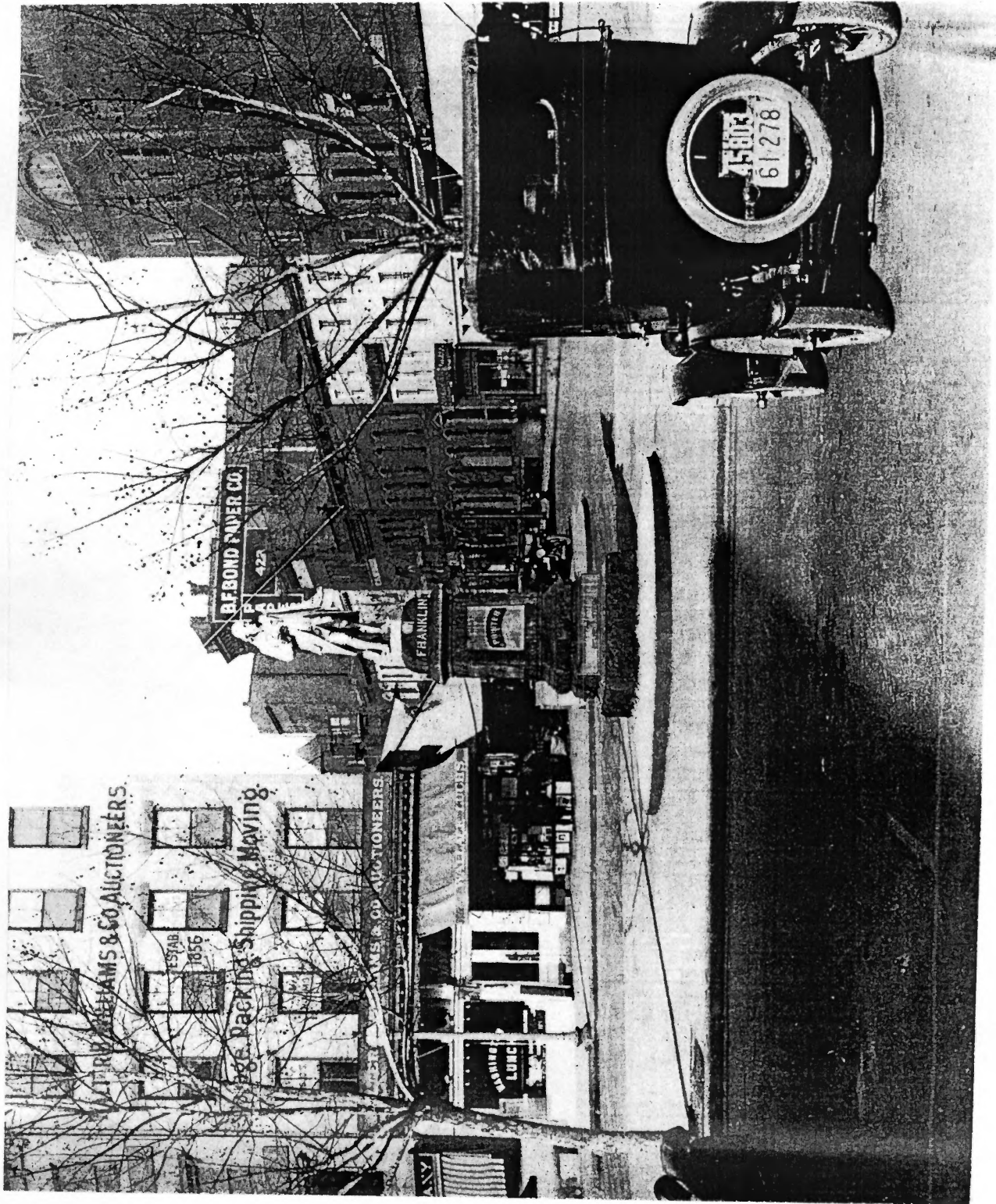




Historic Photograph 11 of 19

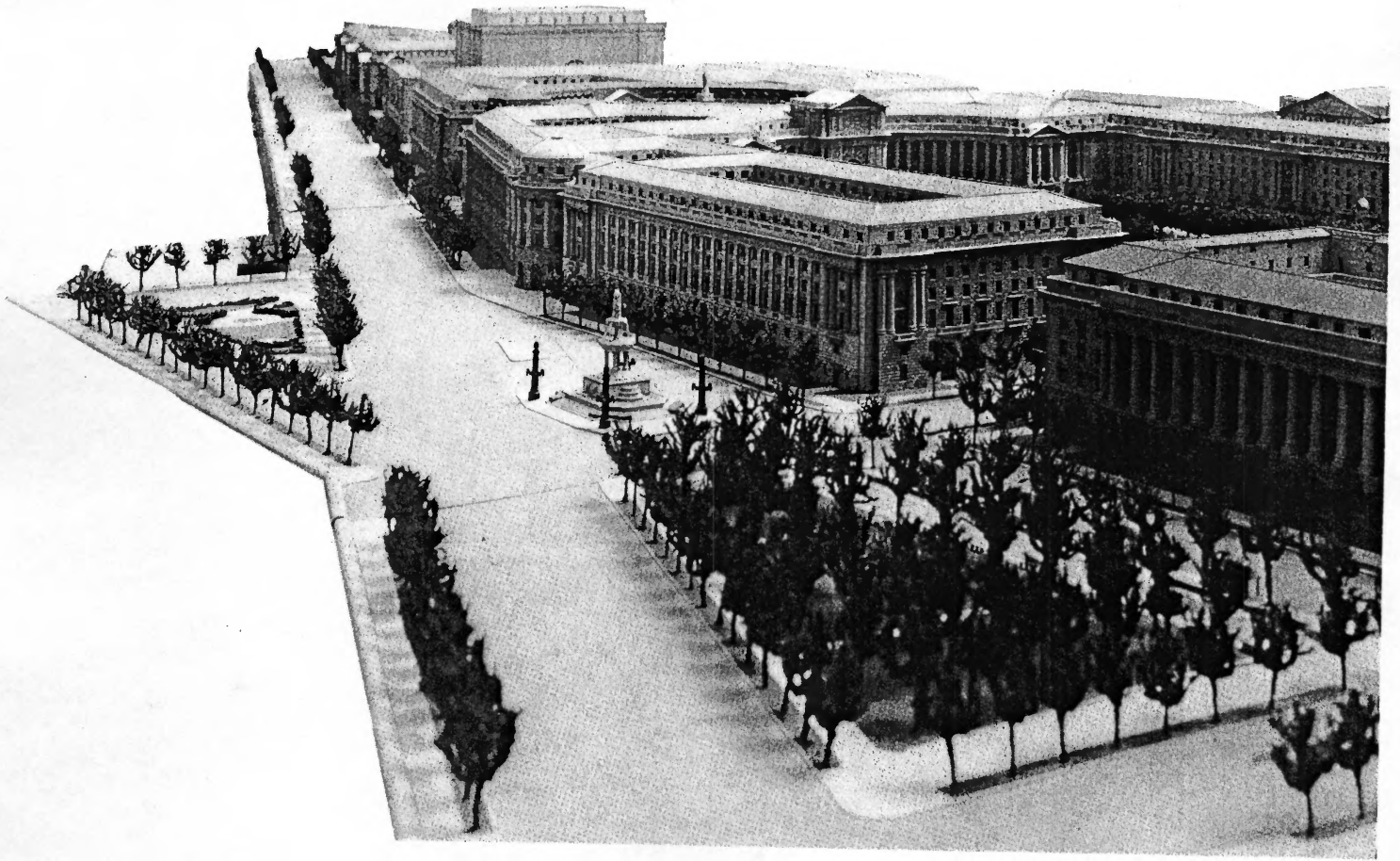




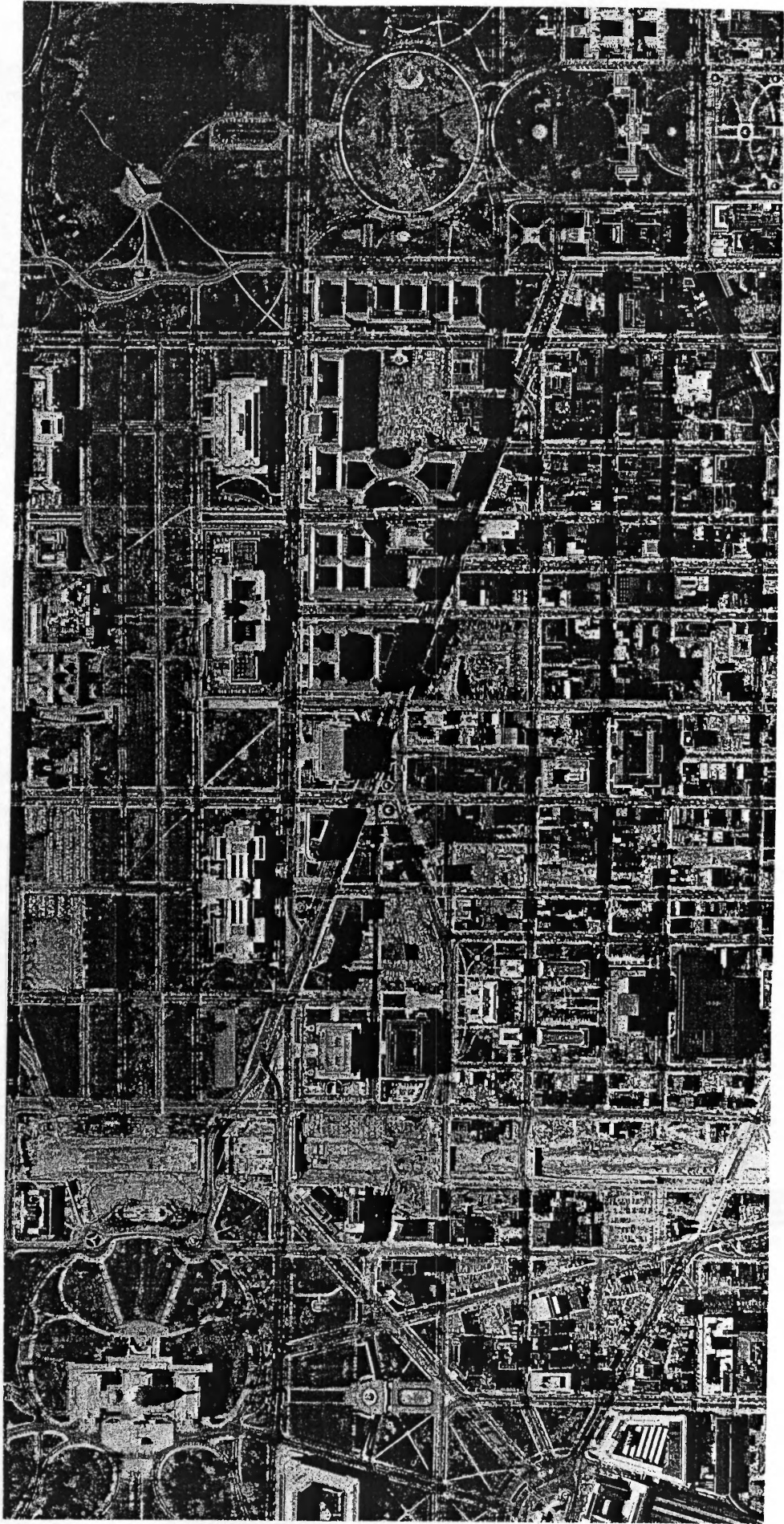


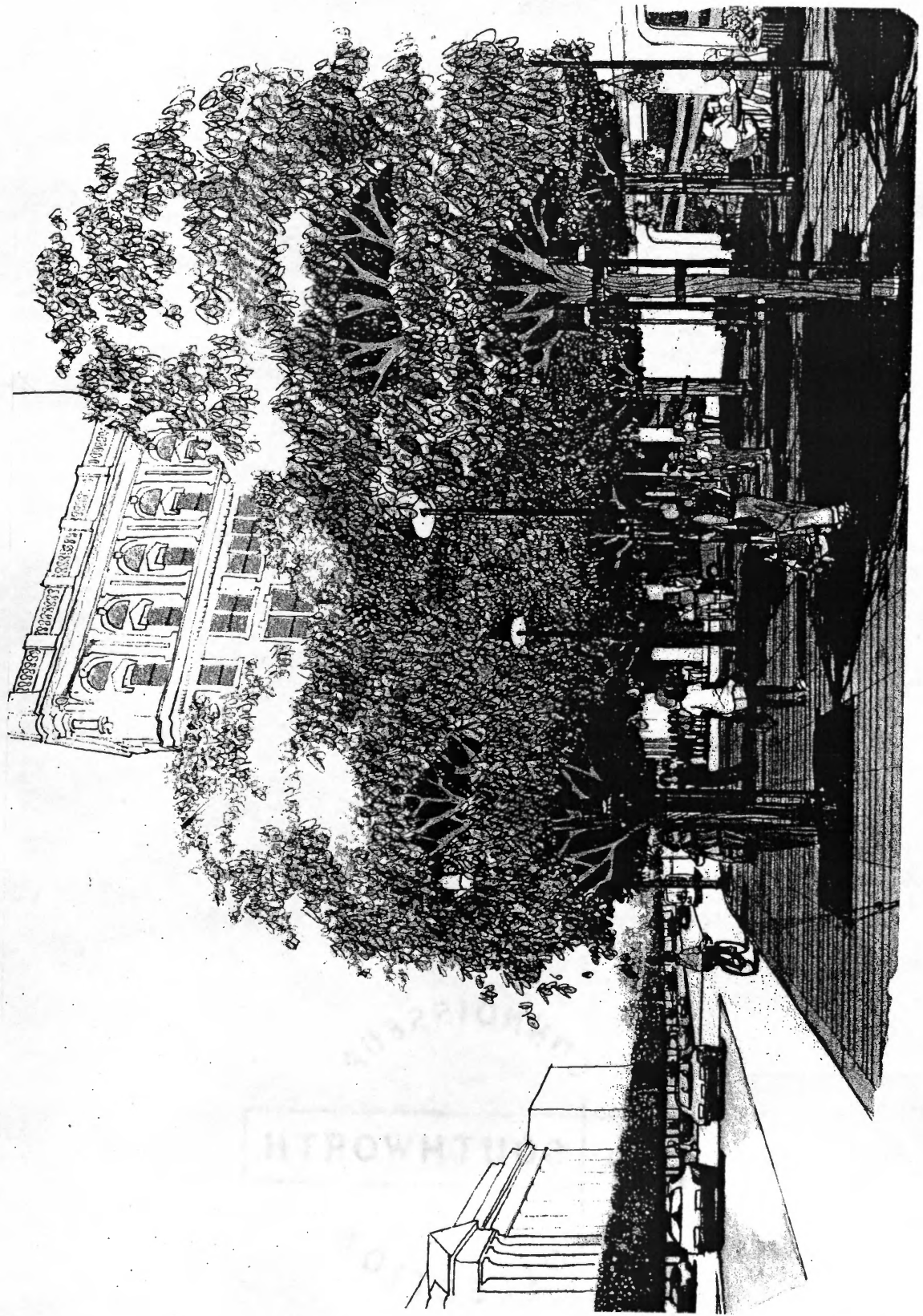
Historic Photograph 14 of 19

UNIVERSITY OF NORTH  
CAROLINA  
LIBRARY

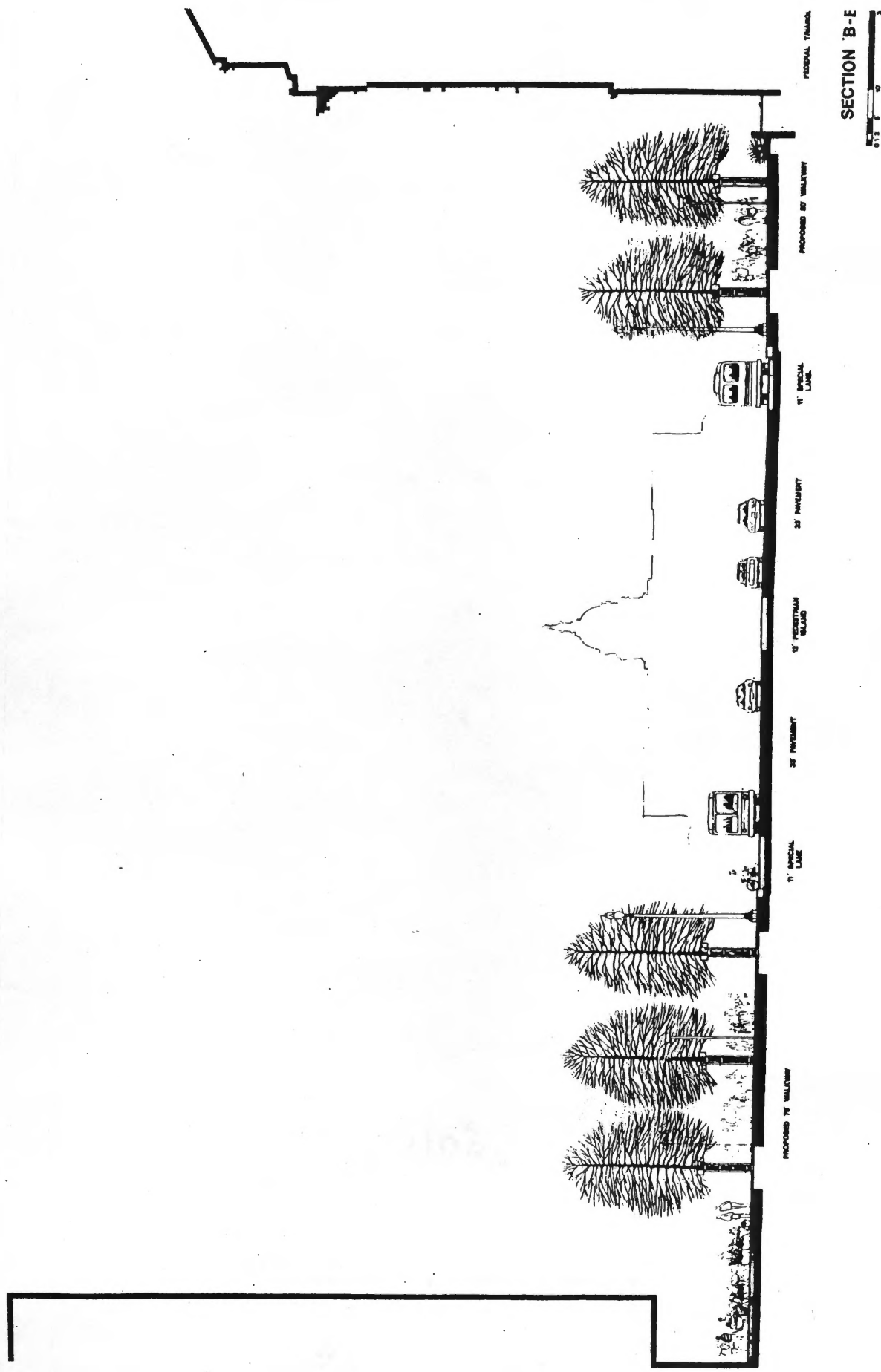








Historic Photograph 17 of 19





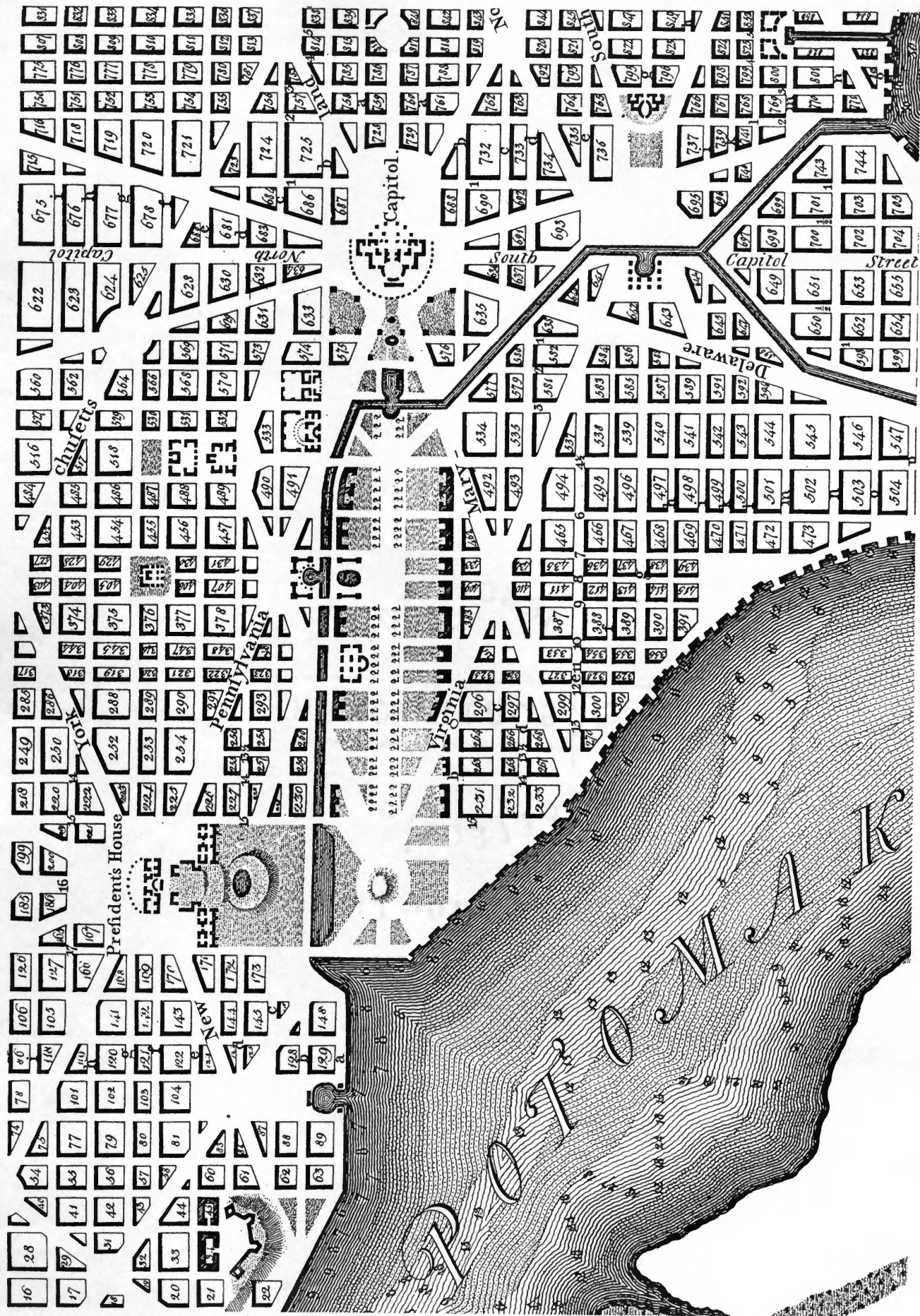
100% Cotton Fiber

DIFFUSION

HISTORIC MAPS

UNIVERSITY OF MICHIGAN



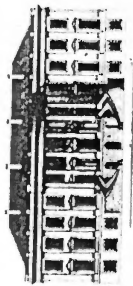
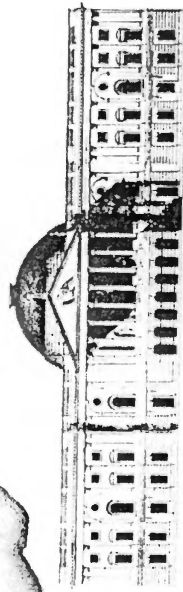
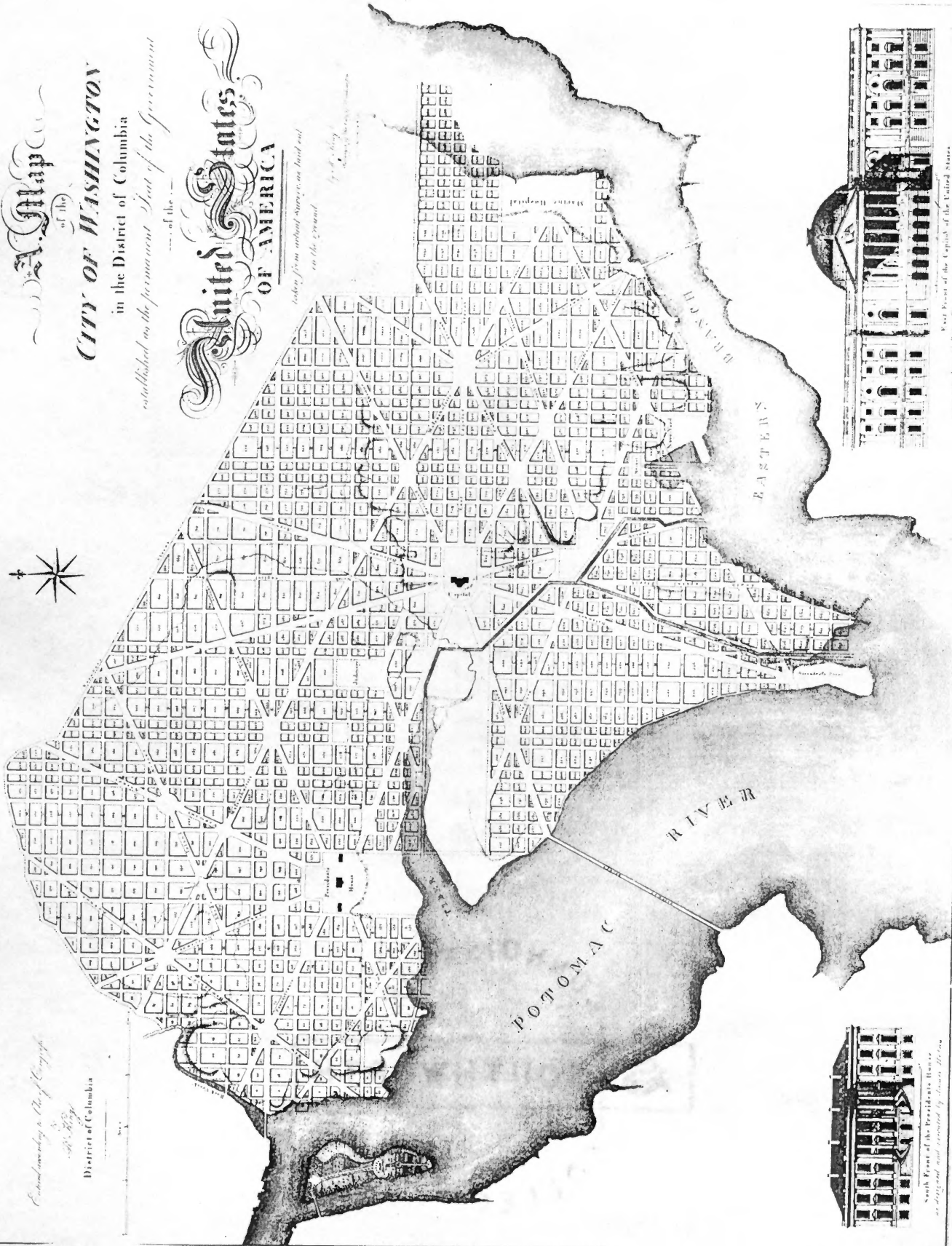


A Map  
of the  
**CITY OF WASHINGTON**

in the District of Columbia  
established as the permanent Seat of the Government

of the  
**United States**  
OF AMERICA

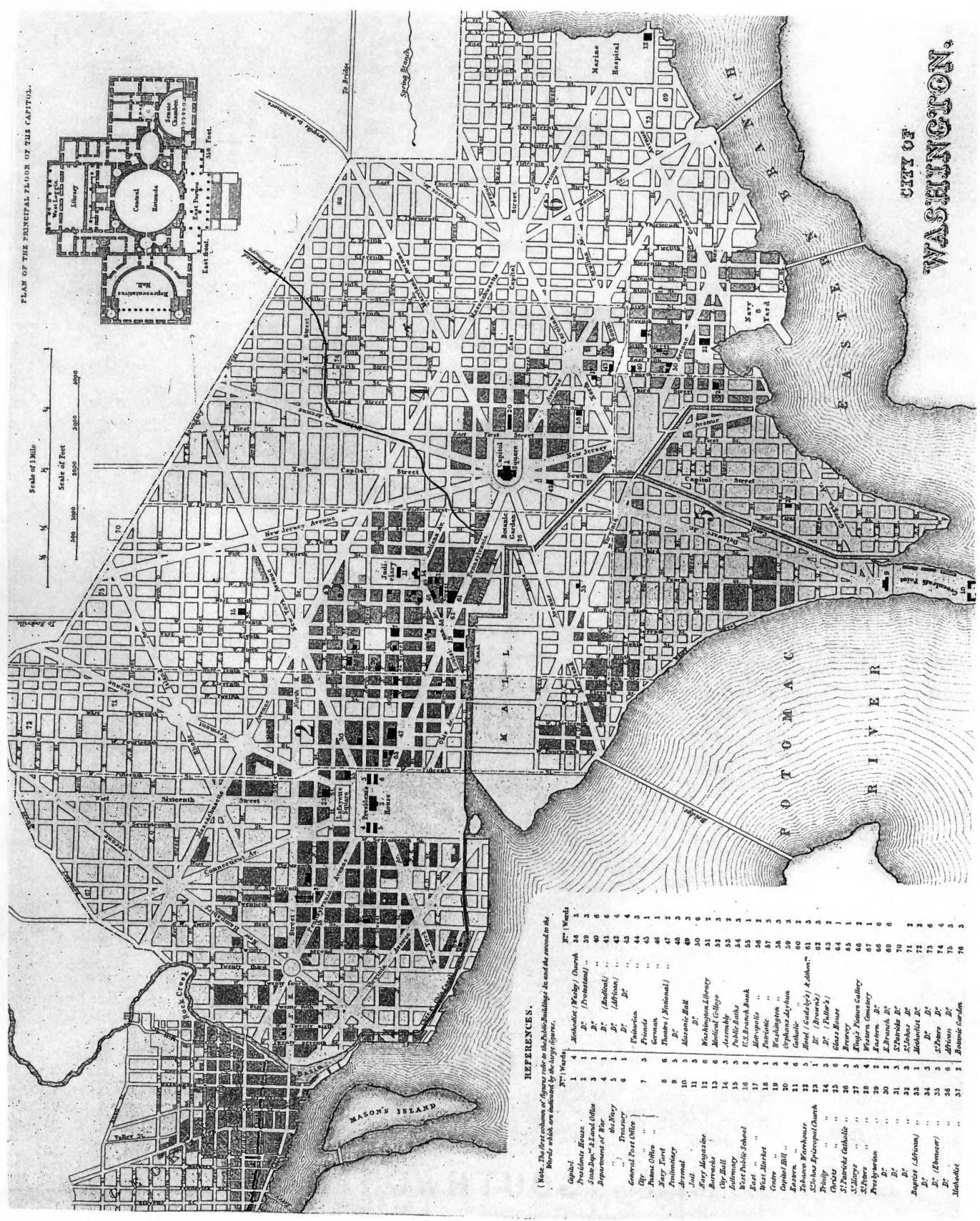
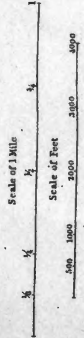
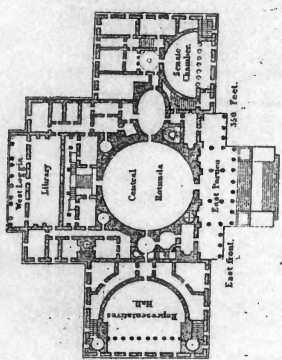
taken from actual surveys as laid out  
on the ground



Published according to an Act of Congress  
in 1800  
District of Columbia



PLAN OF THE PRINCIPAL FLOOR OF THE CAPITOL.

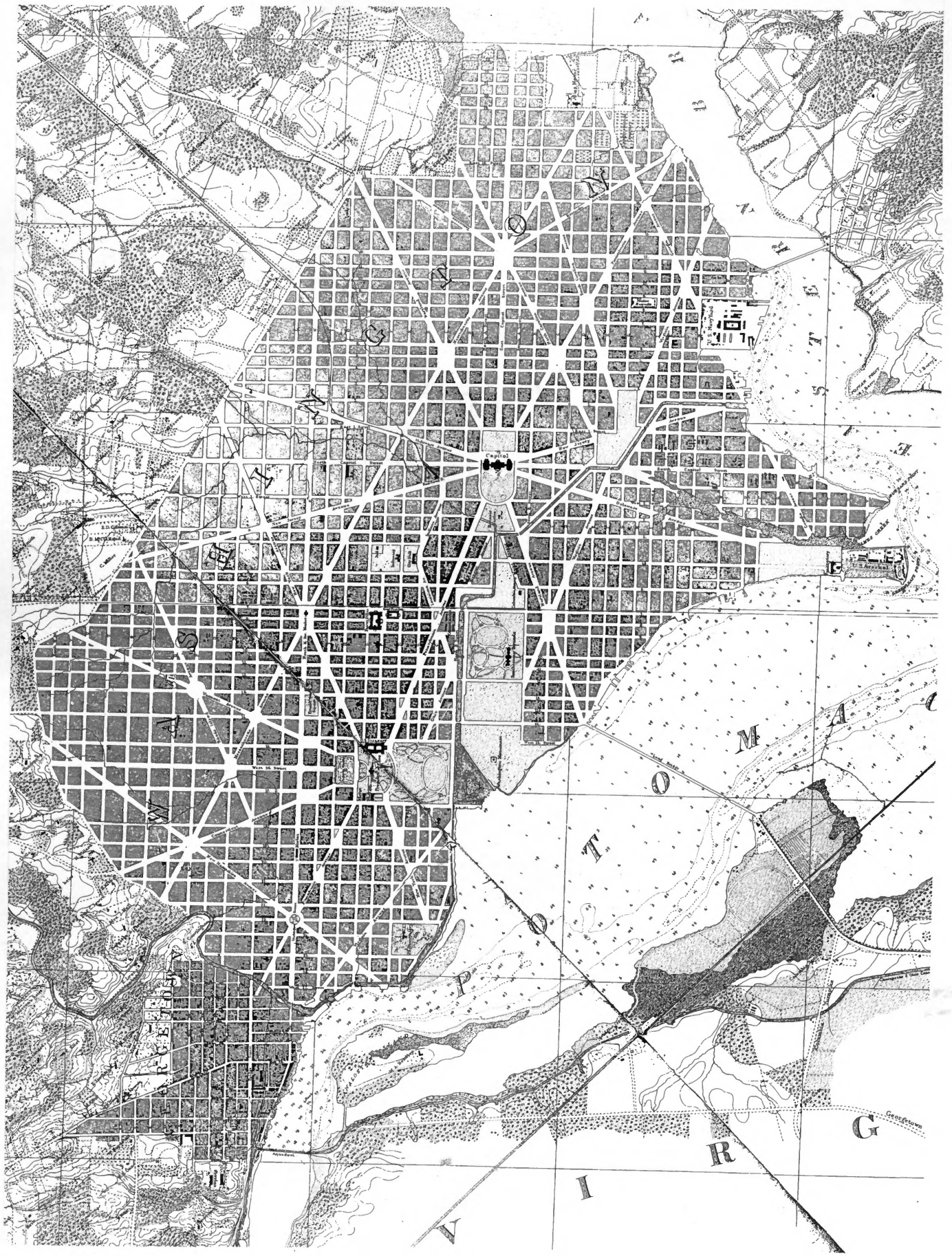


CITY OF WASHINGTON.

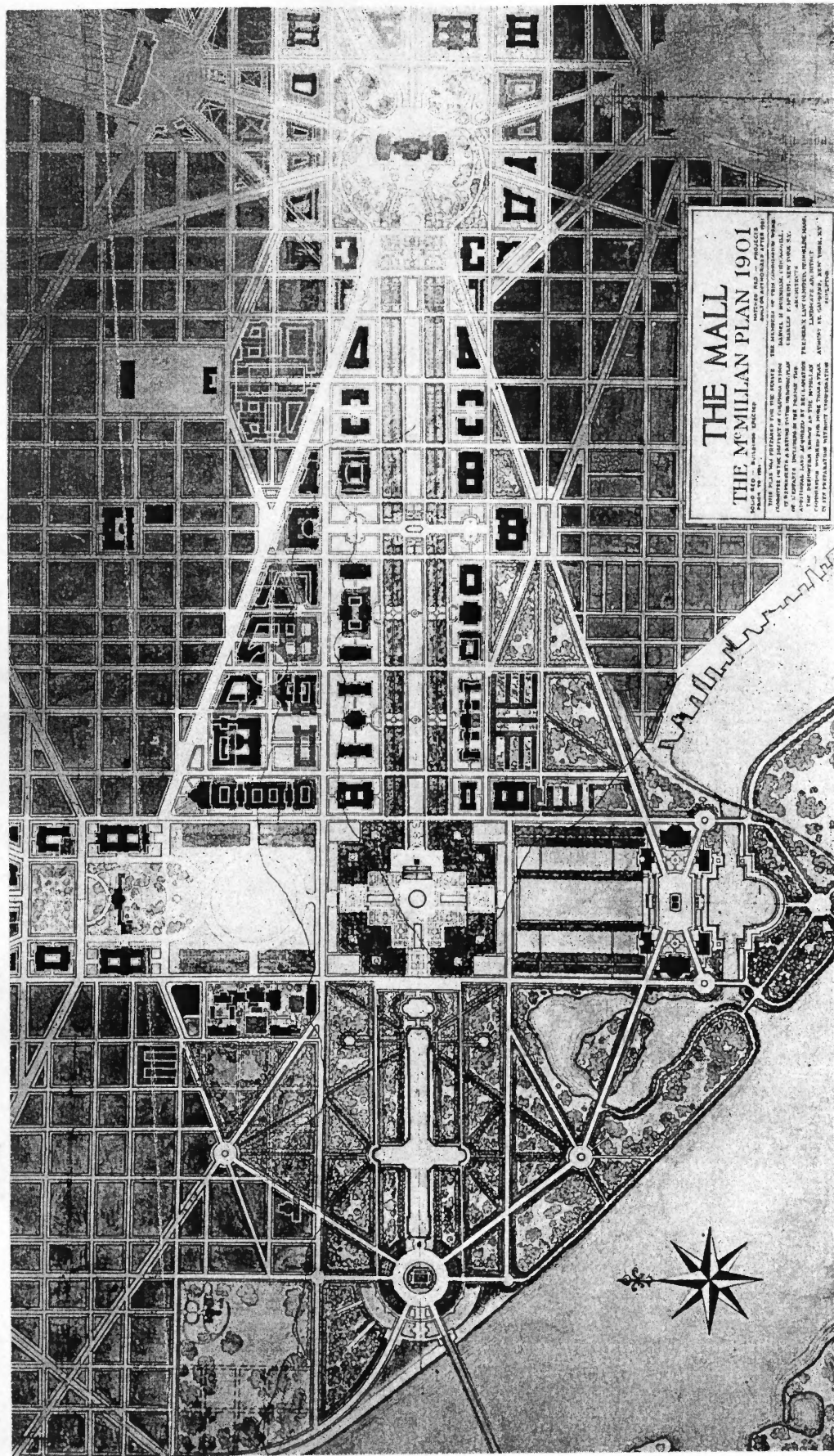
REFERENCES.

(Note. The first column of figures refer to the buildings, the second to the blocks which are indicated by the large figures.)

	No. of Buildings	No. of Blocks
Capitol	1	4
President's House	2	1
State Dept's Exec. Office	3	1
Department of War	4	1
the Navy	5	1
Treasury	6	1
General Post Office	7	3
City	8	5
Bank Office	9	5
Army Yard	10	5
Army Agency	11	5
Armory	12	5
Post	13	5
Army Magazine	14	5
Barracks	15	5
City Hall	16	5
Library	17	4
West Public School	18	1
East	19	1
West Market	20	1
Capitol Hill	21	6
Eastern	22	5
Tobacco Warehouse	23	1
St. Paul's Episcopal Church	24	3
Trinity	25	6
Charles	26	3
St. Andrew's Catholic	27	5
St. Peter's	28	5
St. Ignace	29	5
Presbyterian	30	2
D <sup>r</sup>	31	3
D <sup>r</sup>	32	3
D <sup>r</sup>	33	3
D <sup>r</sup>	34	3
D <sup>r</sup>	35	3
D <sup>r</sup>	36	6
D <sup>r</sup>	37	2
Methodist	38	3
Wesley / Church	39	3
(Protestant)	40	6
(Catholic)	41	6
(African)	42	4
(D <sup>r</sup> )	43	4
(D <sup>r</sup> )	44	3
Episcopal	45	1
German	46	1
(D <sup>r</sup> )	47	2
(D <sup>r</sup> )	48	3
(D <sup>r</sup> )	49	3
(D <sup>r</sup> )	50	6
(D <sup>r</sup> )	51	2
(D <sup>r</sup> )	52	2
(D <sup>r</sup> )	53	2
(D <sup>r</sup> )	54	3
(D <sup>r</sup> )	55	1
(D <sup>r</sup> )	56	2
(D <sup>r</sup> )	57	3
(D <sup>r</sup> )	58	3
(D <sup>r</sup> )	59	3
(D <sup>r</sup> )	60	2
(D <sup>r</sup> )	61	3
(D <sup>r</sup> )	62	3
(D <sup>r</sup> )	63	3
(D <sup>r</sup> )	64	1
(D <sup>r</sup> )	65	1
(D <sup>r</sup> )	66	2
(D <sup>r</sup> )	67	1
(D <sup>r</sup> )	68	6
(D <sup>r</sup> )	69	6
(D <sup>r</sup> )	70	6
(D <sup>r</sup> )	71	2
(D <sup>r</sup> )	72	2
(D <sup>r</sup> )	73	6
(D <sup>r</sup> )	74	4
(D <sup>r</sup> )	75	3
(D <sup>r</sup> )	76	3

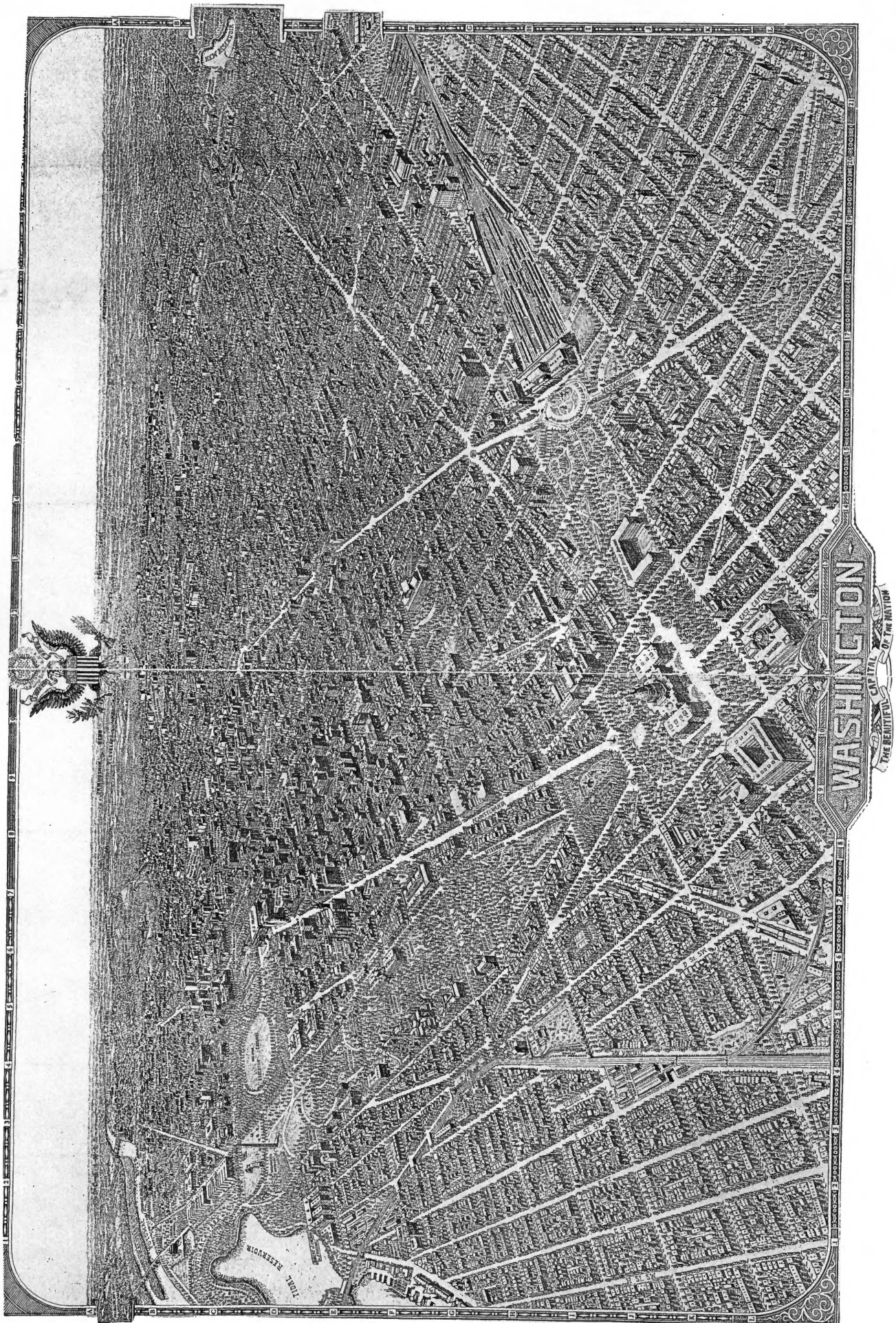


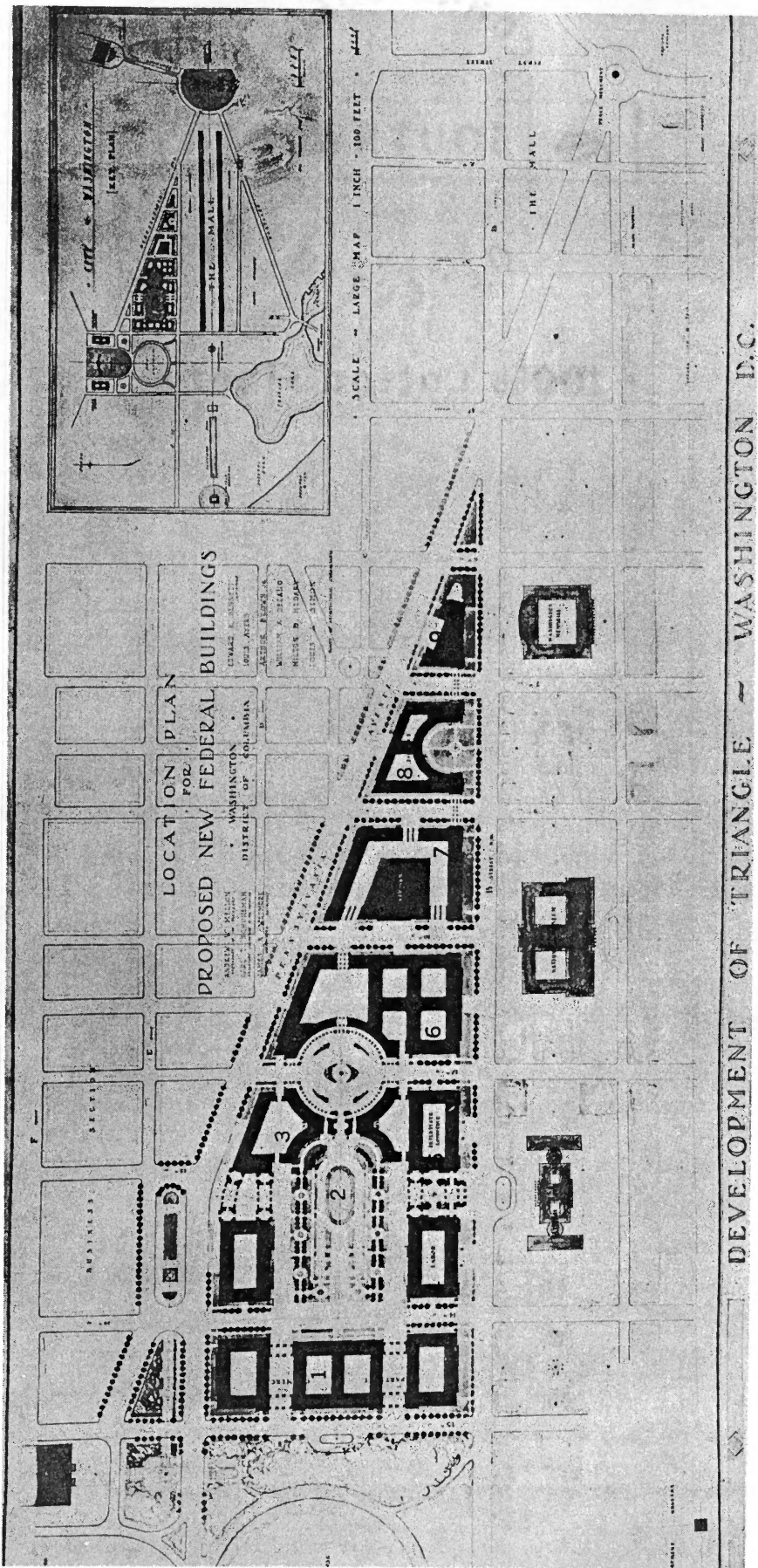


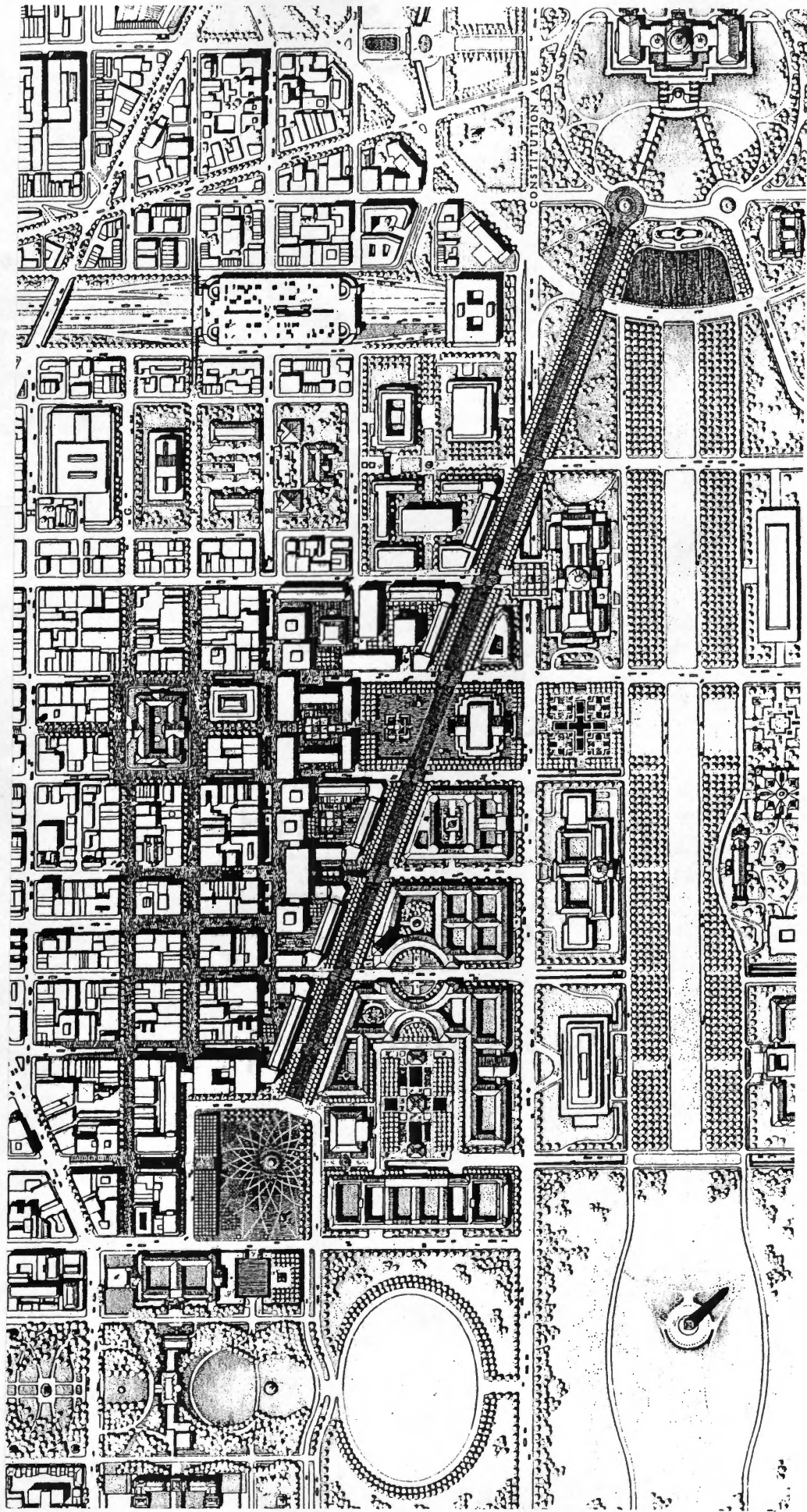


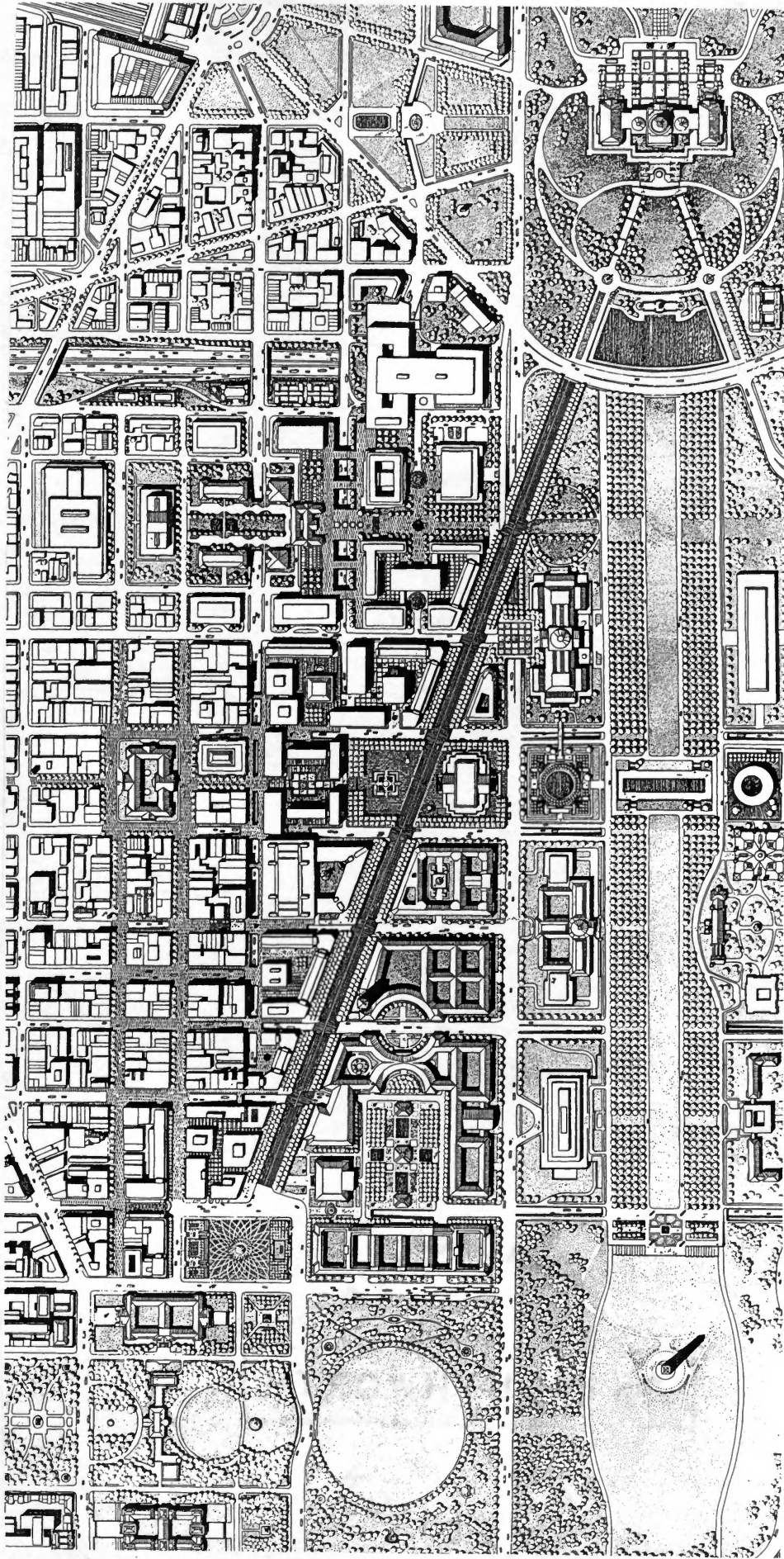
**THE MALL PLAN 1901**  
MCMILLAN, PARSONS & COMPANY  
ARCHITECTS  
NEW YORK

THIS PLAN WAS PREPARED FOR THE STATE OF NEW YORK BY THE ARCHITECTS MCMILLAN, PARSONS & COMPANY, NEW YORK, IN CONNECTION WITH THE PROPOSED IMPROVEMENTS TO THE STATE UNIVERSITY AT ALBANY, N. Y. THE PLAN SHOWS THE PROPOSED IMPROVEMENTS TO THE STATE UNIVERSITY AT ALBANY, N. Y. THE PLAN SHOWS THE PROPOSED IMPROVEMENTS TO THE STATE UNIVERSITY AT ALBANY, N. Y. THE PLAN SHOWS THE PROPOSED IMPROVEMENTS TO THE STATE UNIVERSITY AT ALBANY, N. Y.

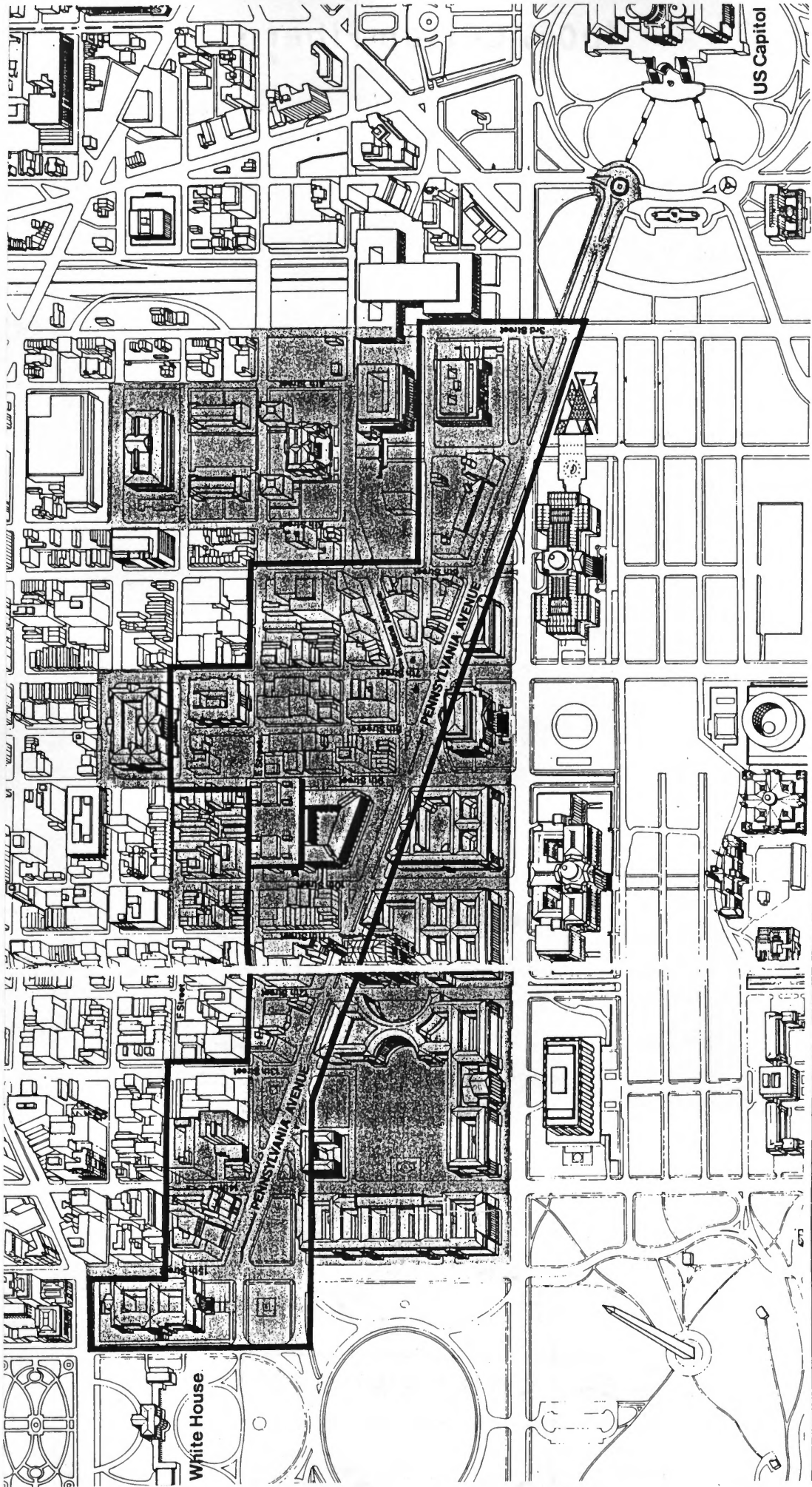






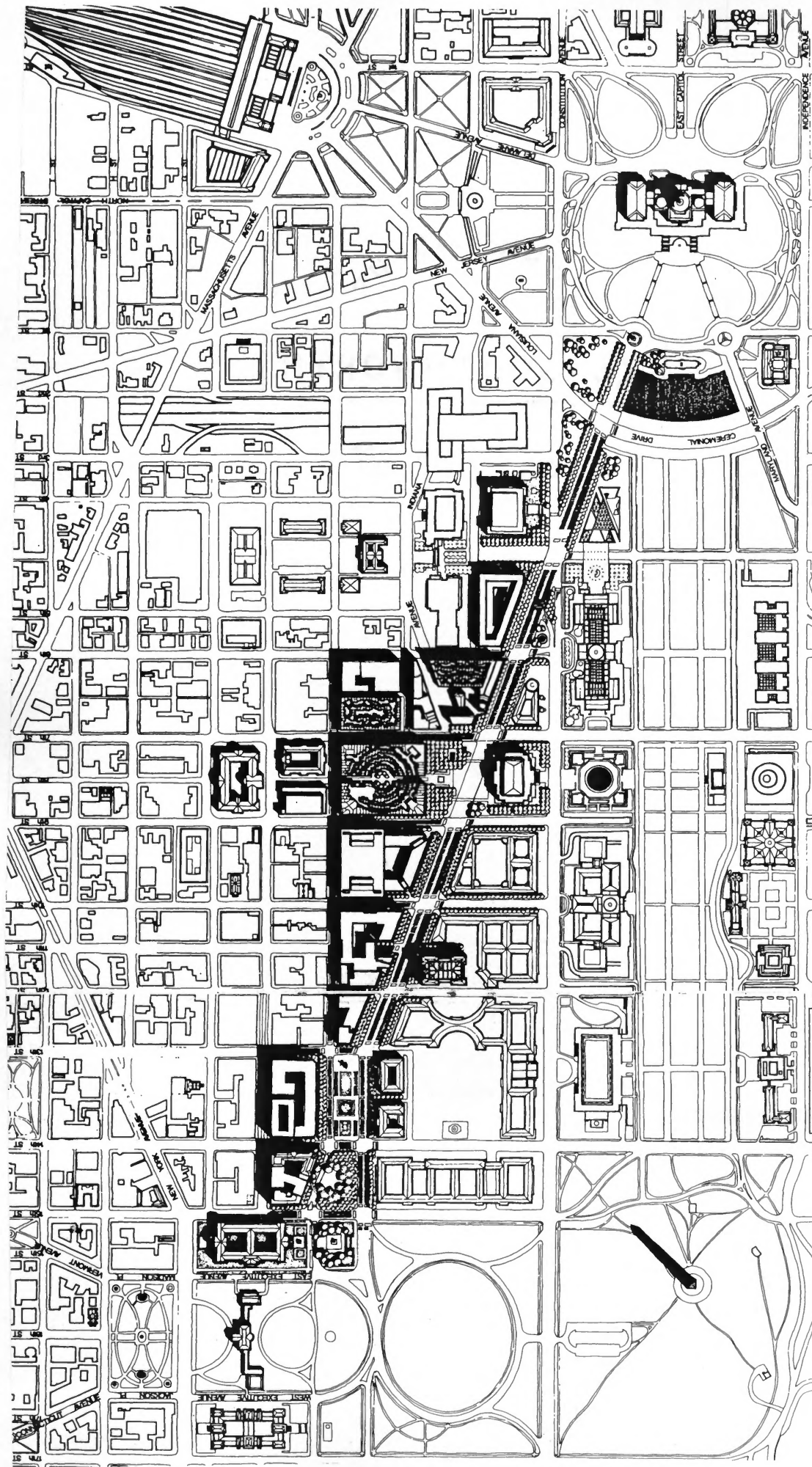


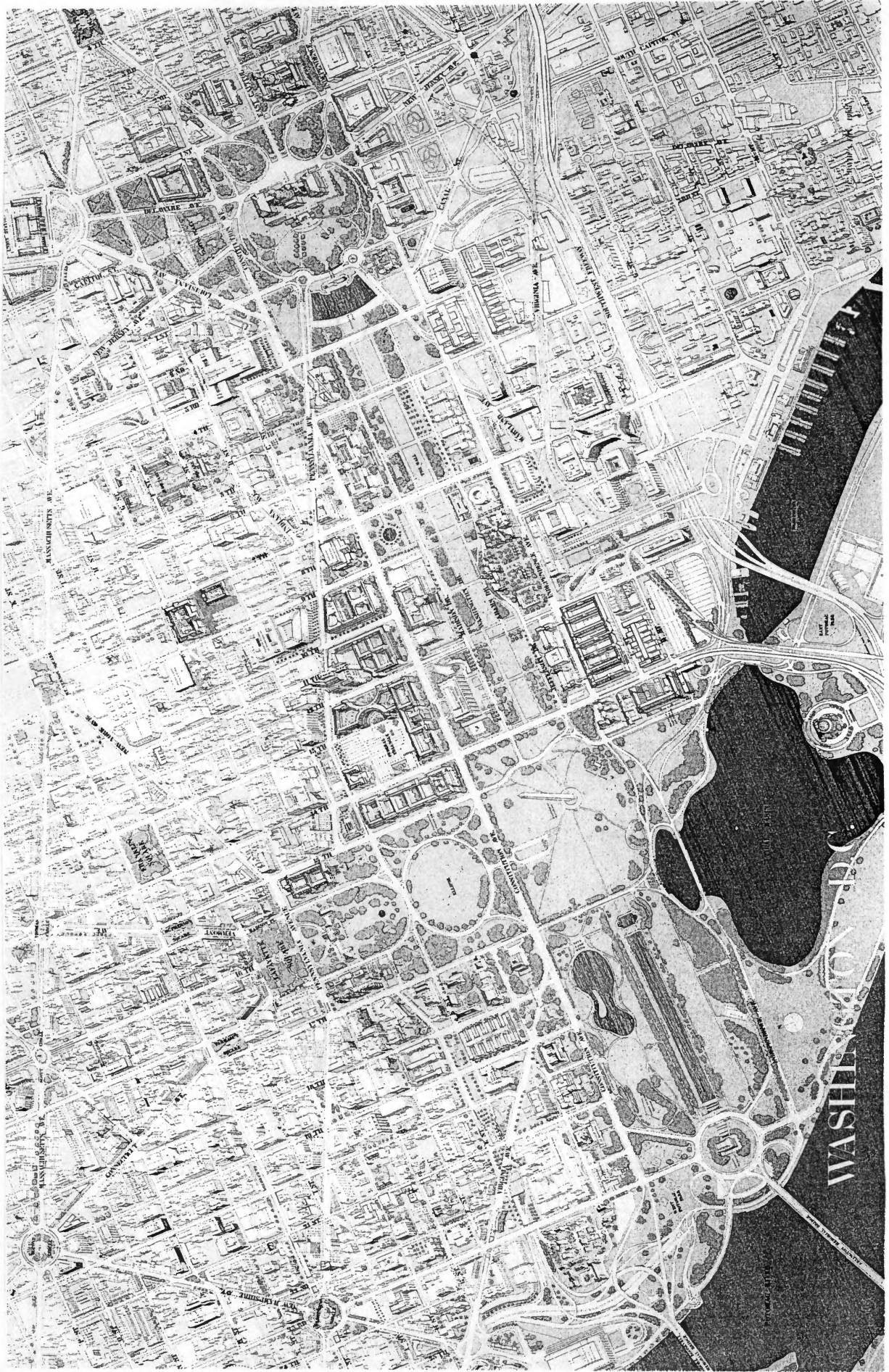


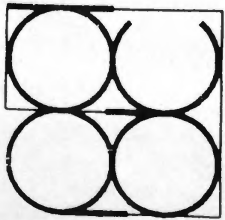


**Pennsylvania Avenue National Historic Site**

**Historic Site**  
**Pennsylvania Avenue Development Corporation Area**



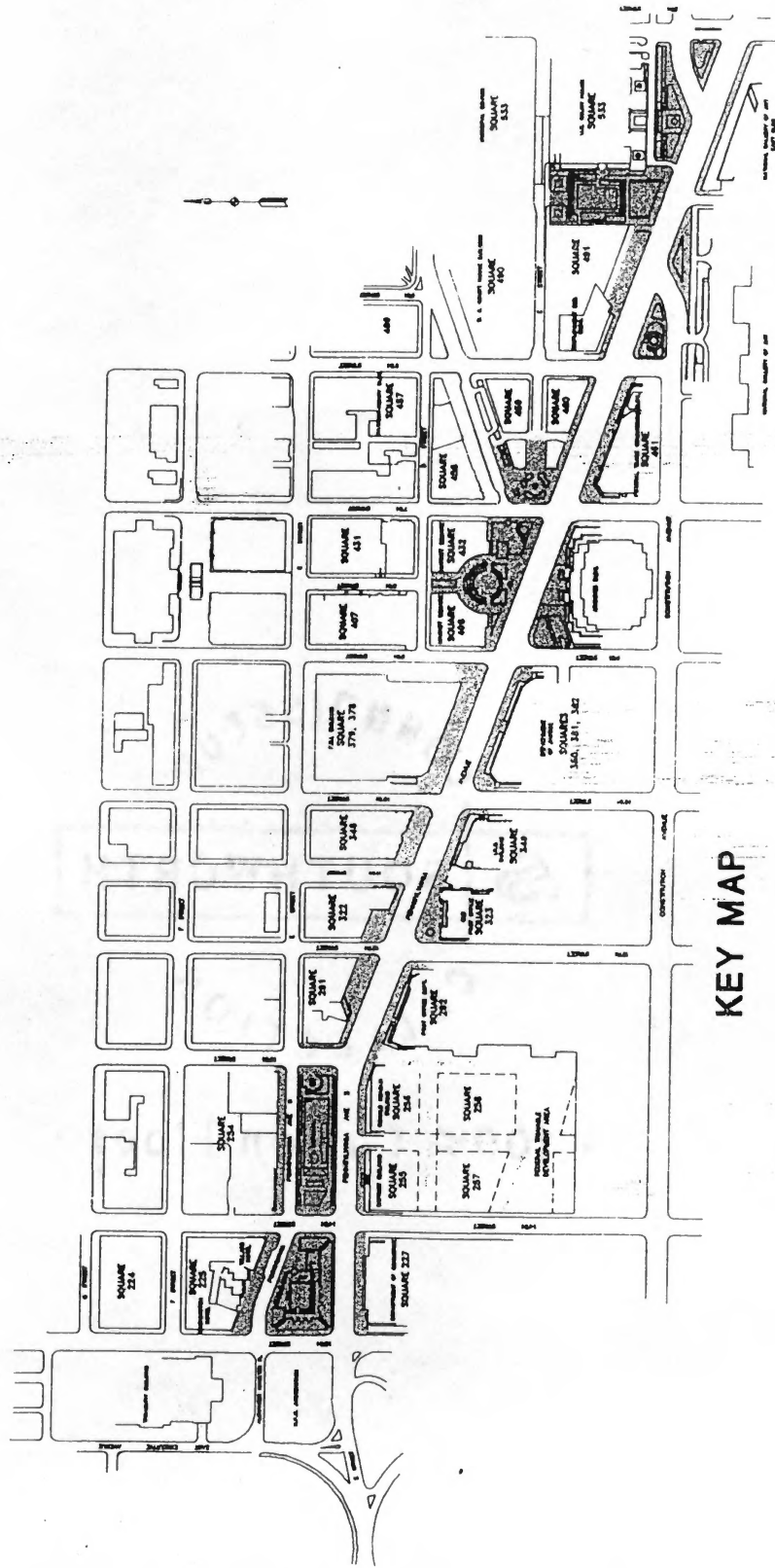




PENNSYLVANIA AVENUE DEVELOPMENT CORPORATION  
PUBLIC IMPROVEMENTS PROGRAM

**PENNSYLVANIA AVENUE  
NATIONAL HISTORIC PARK**

MAP NO. 840-82441 DATED JUNE 1, 1995



KEY MAP

DRAWING INFORMATION  
 DRAWN BY: J. DUFFY  
 CHECKED BY: J. ALBRECHT  
 APPROVED BY: J. MICHELL  
 FOR PLOTTING: J. MICHELL  
 ACCEPTED: MICHELL  
 DATE: 6/1/95

PREPARED BY:  
**TAMS CONSULTANTS INC.**  
 GENERAL CIVIL ENGINEERING CONSULTANT



National Building Museum with National Law  
Enforcement Officers Memorial in foreground,  
looking N from E Street.

Pennsylvania Avenue National Historic Site  
Washington, D. C.

Sophie Cantell, Robinson & Associates, Inc.

Nov. 8, 2002

Photo 1 of 32



Moultrie Courthouse with Municipal Center  
in background. Looking SW from D Street.

Pennsylvania Avenue National Historic Site

Washington, D.C.

Sophie Cantell, Robinson & Associates, Inc.

Nov. 8, 2002

Photo 2 of 32





Old City Hall, S elevation

Pennsylvania Avenue National Historic Site

Washington, D.C.

Sophie Carrell, Robinson & Associates, Inc.

Nov. 8, 2002

Photo 3 of 32



Municipal Center, 1st & 2nd Sts

Pennsylvania Avenue National Historic Site

Washington, D.C.

Sophie Carter, Robinson & Associates, Inc.

Nov. 8, 2002

Page 4 of 32



John Marshall Park, looking N.

Pennsylvania Avenue National Historic Site

Washington, D.C.

Sophie Cartell, Robinson & Associates, Inc.

Nov. 8, 2002

Photo 5 of 32



Frederick Douglass, S. Clifton, with  
Taylor of Freedom in Graveyard.

Pennsylvania Avenue National Historic Site  
Washington, D.C.

Sophie Conell, Robinson & Associates, Inc.  
Nov. 8, 2002

Photo 6 of 32





Peace Monument with U.S. Capitol in  
background.

Pennsylvania Avenue National Historic Site  
Washington, D.C.

Sophie Cantell, Robinson & Associates, Inc.

Nov. 8, 2002

Photo 7 of 32



Federal Trade Commission Building, 600  
Pennsylvania Avenue, SE elevation.

Pennsylvania Avenue National Historic Site  
Washington, D.C.

Sophie Cantell, Robinson & Associates, Inc.

Nov. 8, 2002

Photo 8 of 32



Pennsylvania Avenue, looking W.

Pennsylvania Avenue National Historic Site  
Washington, DC

Sophie Cantel, Robinson & Associates, Inc.

Nov. 8, 2002

Photo 9 of 32



7th Street, looking N.

Pennsylvania Avenue National Historic Site

Washington, D.C.

Sophie Cartell, Robinson & Associates, Inc.

Nov. 8, 2002

Photo 10 of 32





U.S. Navy Memorial, Market Square (S elevation)  
and 8<sup>th</sup> Street vista, looking N.

Pennsylvania Avenue National Historic Site  
Washington, D.C.

Sophie Cantell, Robinson & Associates, Inc.

Nov. 8, 2002

Photo 11 of 32



GENERAL  
WINFIELD SCOTT  
MANHATTAN

Hancock Statue, S elevation, at 7th street  
and Pennsylvania Avenue in Market  
Square.

Pennsylvania Avenue National Historic Site  
Washington, D.C.

Sophie Cantell, Robinson & Associates, Inc.  
Nov. 8, 2002

Photo 12 of 32



Grand Army of the Republic Memorial and  
Central National Bank Building on right and  
-temperance Fountain and the National Bank  
of Washington on left, looking E.

Pennsylvania Avenue National Historic Site  
Washington, D.C.

Sophie Cantell, Robinson & Associates, Inc.

Nov. 8, 2002

Photo 13 of 32



ARTIFACTORY

DUTCH MILL  
NOW OPEN  
THE "DUTCH MILL"

637, 641 and 643 Indiana Avenue,  
S elevations.

Pennsylvania Avenue National Historic Site  
Washington, D.C.

Sophie Carroll, Robinson & Associates, Inc.

Nov. 8, 2002.

Photo 19 of 32





General Post Office Building, S elevation.  
Looking NW from 7<sup>th</sup> and E streets.

Pennsylvania Avenue National Historic Site  
Washington, D.C.

Sybil Cantrell, Robinson & Associates, Inc.

Nov 8, 2002

Photo 15 of 32.



LeDroit Building, 300-810 F Street, NE  
elevation, with Spy Museum in background.

Pennsylvania Avenue National Historic Site  
Washington, D.C.

Sophie Cartell, Robinson & Associates, Inc.  
Nov. 8, 2005

Photo 16 of 32



F Street with Washington Loan and Trust  
Co. Building on left, N elevation.

Pennsylvania Avenue National Historic Site  
Washington, D.C.

Sophie Cantell, Robinson & Associates, Inc.

Nov. 8, 2002

Photo 17 of 32



early 20th-century commercial buildings on  
E Street between 4th and 10th Streets,  
Selevations.

Pennsylvania Avenue National Historic Site  
Washington, D.C.

Spire Cantell, Robinson & Associates, Inc.  
Nov. 8, 2012

Plots 18 of 32





Pennsylvania Avenue Sidewalk, Looking W  
from 9th Street

Pennsylvania Avenue National Historic Site  
Washington, D.C.

Copied from *Photograph of America*, Inc.  
Nov. 5, 2002

Photo 19 of 30



STAR SALOON

STAR SALOON

P & D SOUVENIR

Petersen House (516 10th Street) and  
518 10th Street, E elevations

Pennsylvania Avenue National Historic Site  
Washington, D. C.

Sophie Carter, Robinson & Associates, Inc.

Nov. 3, 2002

Photo 20 of 32



509 10th Street and Ford's Theatre (511  
10th Street), W elevations.

Pennsylvania Avenue National Historic Site  
Washington, D.C.

Sophie Cantrell, Robinson & Associates, Inc.

Nov. 8, 2002

Photo 21 of 32



Lincoln Square, 555 11<sup>th</sup> Street, SW elevation.

Pennsylvania Avenue National Historic Site  
Washington, D.C.

Sophie Cantell, Robinson & Associates, Inc.

Nov. 2, 2002

Photo 26 of 32





Evening Star Building, 1101 Pennsylvania  
Avenue, S elevation

Pennsylvania Avenue National Historic Site  
Washington, D.C.

Sophie Conell, Robinson & Associates, Inc.  
Nov. 8, 2002

Photo 23 of 32



Entrance to Old Post Office with Benjamin  
Franklin statue in foreground, looking S from  
Pennsylvania Avenue and 12th Street.

Pennsylvania Avenue National Historic Site  
Washington, D.C.

Sophie Cantell, Robinson & Associates, Inc.

Nov. 8, 2002

Photo 24 of 32



Pennsylvania Avenue, looking E from 15th Street

Pennsylvania Avenue National Historic Site  
Washington, D.C.

Sophie Cantrell Robinson & Associates, Inc.

Nov 8, 2002

photo 25 of 32



Freedom Plaza, looking E

Pennsylvania Avenue National Historic Site  
Washington, D.C.

Sybil Cartell, Robinson & Associates, Inc.

Nov 8, 2012

Photo 16 of 32





The Willard Hotel, 1401 Pennsylvania Avenue,  
SE elevation.

Pennsylvania Avenue National Historic Site  
Washington, D.C.

Sophie Castell, Rubenstein & Associates, Inc.  
Nov 2, 2002

Photo 27 of 32



View of Parking Park, looking NE

Pennsylvania Avenue National Historic Site  
Washington, D.C.

Sophie Condit, Robinson & Associates, Inc.

Nov. 8, 2007

Photo 24 of 32



District Building, 1350 Pennsylvania Avenue,  
S elevation.

Pennsylvania Avenue National Historic Site  
Washington, D.C.

Sophie Cantell, Robinson & Associates, Inc.  
Nov. 8, 2002

Photo 29 of 32



Entrance to Departmental Auditorium,  
S elevation.

Pennsylvania Avenue National Historic Site  
Washington, D.C.

Sophie Cantrell, Robinson & Associates Inc.

Nov. 3, 2002

Photo 30 of 32





Sherman Park, looking NW.

Pennsylvania Avenue National Historic Site  
Washington, D.C.

Sophie Cantell, Robinson & Associates, Inc.

Nov. 8, 2002

Photo 31 of 32



Treasury Building, 1500 Pennsylvania Avenue,  
S elevation.

Pennsylvania Avenue National Historic Site  
Washington, D.C.

Sophie Castelli, Robinson & Associates, Inc.  
Nov. 8, 2002

Photo 32 of 32