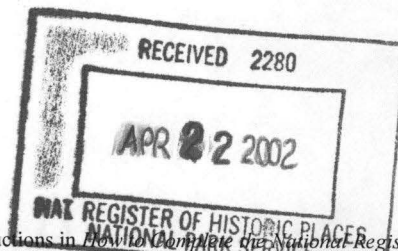


United States Department of the Interior
National Park Service

National Register of Historic Places
Registration Form

This form is for use in nominating or requesting determinations for individual properties and districts. See instructions in *National Register of Historic Places Registration Form* (National Register Bulletin 16A). Complete each item by marking "x" in the appropriate box or by entering the information requested. If an item does not apply to the property being documented, enter "N/A" for "not applicable." For functions, architectural classification, materials, and areas of significance, enter only categories and subcategories from the instructions. Place additional entries and narrative items on continuation sheets (NPS Form 10-900a). Use a typewriter, word processor, or computer, to complete all items.



1. Name of Property

historic name Meniffee High School Gymnasium

other names/site number CN0160

2. Location

street & number Northwest Corner of North Park Street and East Mustang Street

☐ not for publication

city or town Meniffee

☐ vicinity

state Arkansas code AR County Conway code 029 zip code 72107

3. State/Federal Agency Certification

As the designated authority under the National Historic Preservation Act, as amended, I hereby certify that this ☒ nomination ☐ request for determination of eligibility meets the documentation standards for registering properties in the National Register of Historic Places and meets the procedural and professional requirements set for in 36 CFR Part 60. In my opinion, the property ☒ meets ☐ does not meet the National Register criteria. I recommend that this property be considered significant ☐ nationally ☐ statewide ☒ locally. (See continuation sheet for additional comments.)

Cecilia Marchus
Signature of certifying official/Title

4/17/02
Date

Arkansas Historic Preservation Program
State or Federal agency and bureau

In my opinion, the property ☒ meets ☐ does not meet the National Register criteria. ☐ See Continuation sheet for additional comments.)

Signature of certifying official/Title

Date

State or Federal agency and bureau

4. National Park Service Certification

I hereby certify that the property is:

☒ entered in the National Register.
☐ See continuation sheet

☐ determined eligible for the
National Register.
☐ See continuation sheet

☐ determined not eligible for the
National Register.

☐ removed from the National
Register.

☐ other, (explain:)

for
Signature of the Keeper

6.6.02
Date of Action

Edson H. Beall

Meniffee High School Gymnasium

Name of Property

Conway County, Arkansas

County and State

5. Classification**Ownership of Property**

(Check as many boxes as apply)

- ☐ private
☒ public-local
☐ public-State
☐ public-Federal

Category of Property

(Check only one box)

- ☒ building(s)
☐ district
☐ site
☐ structure
☐ object

Number of Resources within Property

(Do not include previously listed resources in count.)

Contributing

Noncontributing

1

buildings

sites

structures

objects

1

0

Total

Name of related multiple property listing

(Enter "N/A" if property is not part of a multiple property listing.)

Public Schools in the Ozarks, 1920-1940

**Number of Contributing resources previously listed
in the National Register**

N/A

6. Function or Use**Historic Functions**

(Enter categories from instructions)

RECREATION AND CULTURE: sports facility

Current Functions

(Enter categories from instructions)

VACANT/NOT IN USE

7. Description**Architectural Classification**

(Enter categories from instructions)

Bungalow/Craftsman

Materials

(Enter categories from instructions)

Foundation STONE

walls STONE

roof ASPHALT

other

Narrative Description

(Describe the historic and current condition of the property on one or more continuation sheets.)

SEE CONTINUATION SHEET

United States Department of the Interior
National Park Service

National Register of Historic Places Continuation Sheet

Section number 7 Page 1

SUMMARY

The Meniffee High School Gymnasium, constructed in 1938 by the WPA, is a one-story uncoursed fieldstone gymnasium with a rectangular plan and a gable roof. Though the primary windows are now covered by plywood, they are nine-over-six double-hung wood frame windows. A second row of smaller windows beneath the cornice provides light to the large space within. These are circa 1970 replacements of the original clerestory windows. The building's exposed rafter ends, side gabled roof, and the two prominent porches supported by field stone piers make it a representative example of a WPA designed gymnasium. Sited on a gradually sloping hill just south of the northwest corner of North Park Street and East Mustang Street, the gymnasium is the only building of the circa 1938 school complex to survive the 1960 tornado. The only outbuilding to survive the tornado intact now lies outside the property boundary of the gymnasium. This well house has suffered the reconfiguration of its roofline from pyramidal to gable.

ELABORATION

The Meniffee High School Gymnasium is a single story, fieldstone veneer gymnasium building designed in a restrained version of the Craftsman style. Its rectangular plan is highlighted only by the two prominent single bay porches located on either end of the front façade. The side gabled roof is covered by composition shingles and is pierced by an interior chimney near the northwestern corner. The only addition to the building is located on the north elevation. This addition was added in the mid 1970s and features concrete block walls, and a low-pitched gable roof. The addition housed new shower facilities for the students.

The two porches feature a gable roof supported upon two fieldstone columns. The entrances are double-leafed with transom windows. The area above in the gable end is covered with a wide weatherboard siding. The north porch is the primary entrance and grants access to the break box and the old concession stand.

The interior consists of a stage located on the east side of the building, with a classroom on both ends of the stage. The walls are clad in beaded board in the public spaces and plain horizontal boards in the restrooms. The original restrooms are still accessible and are located underneath both ends of the bleachers. Four wooden columns extend from floor to ceiling. The beams are interfaced with the bleacher section. Lighting for the interior is accomplished by five rows of lights. The original gym floor is in poor condition due to water infiltration and pigeon droppings. Located near the property, but outside of this nomination is the aforementioned well house.

8. Statement of Significance**Applicable National Register Criteria**

(Mark "x" in one or more boxes for the criteria qualifying the property for National Register listing.)

- ☒ **A** Property is associated with events that have made a significant contribution to the broad patterns of our history.
- ☐ **B** Property is associated with the lives of persons significant in our past.
- ☐ **C** Property embodies the distinctive characteristics of a type, period, or method of construction or represents the work of a master, or possesses high artistic values, or represents a significant and distinguishable entity whose components lack individual distinction.
- ☐ **D** Property has yielded, or is likely to yield, information important in prehistory or history.

Criteria Considerations

(Mark "x" in all the boxes that apply.)

Property is:

- ☐ **A** owned by a religious institution or used for religious purposes.
- ☐ **B** removed from its original location.
- ☐ **C** moved from its original location.
- ☐ **D** a cemetery.
- ☐ **E** a reconstructed building, object, or structure.
- ☐ **F** a commemorative property
- ☐ **G** less than 50 years of age or achieved significance within the past 50 years.

Narrative Statement of Significance

(Explain the significance of the property on one or more continuation sheets.)

9. Major Bibliographical References**Bibliography**

(Cite the books, articles, and other sources used in preparing this form on one or more continuation sheets.)

Correspondence from Rubye M. Jamison to Roy L. Wert, 2001.

English, J.W. *Meniffee Past and Present*, p. 6, 14, 18.

Freeman McKindra's 1995 speech (unpublished).

Previous documentation on file (NPS):

- ☐ preliminary determination of individual listing (36 CFR 67) has been requested

Levels of Significance (local, state, national)

Local

Areas of Significance (Enter categories from instructions)

ENTERTAINMENT/RECREATION

Period of Significance

1938

Significant Dates

1938

Significant Person (Complete if Criterion B is marked)

N/A

Cultural Affiliation (Complete if Criterion D is marked)

N/A

Architect/Builder

WPA

Primary location of additional data:

- ☒ State Historic Preservation Office
- ☐ Other State Agency

- ☐ previously listed in the National Register
- ☐ Previously determined eligible by the National Register
- ☐ designated a National Historic Landmark
- ☐ recorded by Historic American Buildings Survey # _____
- ☐ recorded by Historic American Engineering Record # _____

- ☐ Federal Agency
- ☐ Local Government
- ☐ University
- ☐ Other

Name of repository:

United States Department of the Interior

National Park Service

**National Register of Historic Places
Continuation Sheet**Section number 8 Page 1**SUMMARY**

The Meniffee High School Gymnasium in Conway County is being nominated with local significance under Criterion A through its direct association with the evolution of the public school system in the Ozark Mountain region of the state during the period covered by the historic context, *Public Schools in the Ozarks, 1920-1940*.

ELABORATION

The Meniffee High School Gymnasium constructed in 1938 falls under the historic context *Public Schools in the Ozarks, 1920-1940*, as a representative example of a stone gymnasium building constructed for a rural school district. It is significant locally under Criterion A through its association with the Works Progress Administration, School principal J. C. McDaniel and the school board were able to have a gymnasium built. At the time of its constructs, it was one of the "first three buildings established for the purpose of sporting events indoors in Arkansas for African Americans." The three structures were Rosston in Nevada County; Meniffee's gym in Conway County; and AM&N's gym in Jefferson County." According to Mr. Mckindra, a graduate of the Conway County Training School, the building became "the life of the community." Citizens in the community worked on the building project. According to a letter from Ms. Rubye M. Jamison, the following Meniffee carpenters also worked on the project: Mr. Robert Jamison, Mr. Charles "Boy" Thompson, Mr. Dewitt Winston, and a member of the Hines family.

The Meniffee High School Gymnasium became a place of pride for the students and families in Meniffee. It was the place for local and state basketball tournaments; Meniffee won several state basketball championships. In 1941, Eddie Lee Sutton, an English instructor began hosting "The Dramatic Tournament" on the stage inside the gymnasium. The school debating team also hosted state events on the stage of the gym. The spring agricultural shows hosted by Meniffee's NFA were held in the gymnasium. In addition, all proms and large school assemblies were held in the gymnasium building.

The Meniffee High School Gymnasium also served as a community center hosting public events for the community of Meniffee. The gymnasium maintained its prominence in the community in that it was the only one of the school buildings to survive the 5 May 1960 tornado intact. Following the tornado, the gymnasium was used as a temporary classroom building for students until other arrangements could be made to continue classes.

Since 1965, Meniffee has been an incorporated town with a Mayor/Alderman form of governing. In 1966, the town hired its first town Marshall and established the Meniffee Waterworks. In the 1970s, gravel lanes became paved streets with street signs. It was also during the 1970s that the building gained an addition to the building containing modern showers. In 1980, the Meniffee School was merged with the Morrilton and Plummerville Schools to form the South Conway County School District, and in June 1989, the district gave the City of Meniffee its gymnasium back. Since that time the building and its property have been in the hands of the Meniffee City government.

Significance

The Meniffee High School Gymnasium constructed in 1938 falls under the historic context *Public Schools in the Ozarks, 1920-1940*, as a representative example of a stone gymnasium building constructed for a rural school district. It is being nominated under Criterion A with local significance.

Meniffee High School Gymnasium

Name of Property

Conway County, Arkansas

County and State

10. Geographical Data

Acreage of Property Less than one acre.

UTM References

(Place additional UTM references on a continuation sheet.)

1 15 541291 3889253
Zone Easting Northing
2 _____

3 _____
Zone Easting Northing
4 _____

☐ See continuation sheet

Verbal Boundary Description

(Describe the boundaries of the property on a continuation sheet.)

Section 24, Township 6, Range 15W. Beginning at an imaginary point located 20 feet north the northwest corner of the driveway turn west and continue west for a distance of 75 feet to a point formed by the intersection of this line with the easternmost property boundary, turn facing south and continue south approximately 65 feet to a point formed by the intersection of this line with the southernmost property boundary, turn facing east and continue east approximately 75 feet until you reach the curb of the road, turning north and follow the curb until you reach the point of beginning.

Boundary Justification

(Explain why the boundaries were selected on a continuation sheet.)

This boundary contains the 1938 gymnasium which is the only building remaining from the school complex after the 1960 tornado.

11. Form Prepared By

name/title Jerry Coleman/President (Edited by Amy Bennett/Survey Historian)

organization Meniffee Community Development Center, Inc.

date 12/12/01

street & number P.O. Box 147

telephone (501) 324-9874

city or town Meniffee

State Arkansas

zip code 72107

UNITED STATES DEPARTMENT OF THE INTERIOR
NATIONAL PARK SERVICE

NATIONAL REGISTER OF HISTORIC PLACES
EVALUATION/RETURN SHEET

REQUESTED ACTION: NOMINATION

PROPERTY NAME: Menifee High School Gymnasium

MULTIPLE NAME: Public Schools in the Ozarks MPS

STATE & COUNTY: ARKANSAS, Conway

DATE RECEIVED: 4/22/02 DATE OF PENDING LIST: 5/16/02
DATE OF 16TH DAY: 6/01/02 DATE OF 45TH DAY: 6/06/02
DATE OF WEEKLY LIST:

REFERENCE NUMBER: 02000601

REASONS FOR REVIEW:

APPEAL: N DATA PROBLEM: N LANDSCAPE: N LESS THAN 50 YEARS: N
OTHER: N PDIL: N PERIOD: N PROGRAM UNAPPROVED: N
REQUEST: N SAMPLE: N SLR DRAFT: N NATIONAL: N

COMMENT WAIVER: N

___ACCEPT ___RETURN ___REJECT _____DATE

ABSTRACT/SUMMARY COMMENTS:

RECOM./CRITERIA _____

REVIEWER _____ DISCIPLINE _____

TELEPHONE _____ DATE _____

DOCUMENTATION see attached comments Y/N see attached SLR Y/N



Menifee Highschool Gymnasium
Conway County, AR

Zac Cothren

December 2001

AHPP

View of north elevation looking south



Menifce Highschool Gymnasium
Conway County, AR

Zac Cothren

December 2001

AHPP

View of South elevation looking north



Meniffee Highschool Gymnasium

Conway County, AR

Zac Cothren

December 2001

AHPP

View of East elevation looking west



WPA

1938

Menifee Highschool Gymnasium

Conway County, AR

Zac Cothren

December 2001

AHPP

Detail of "cornerstone" looking east



Menifee Highschool Gymnasium

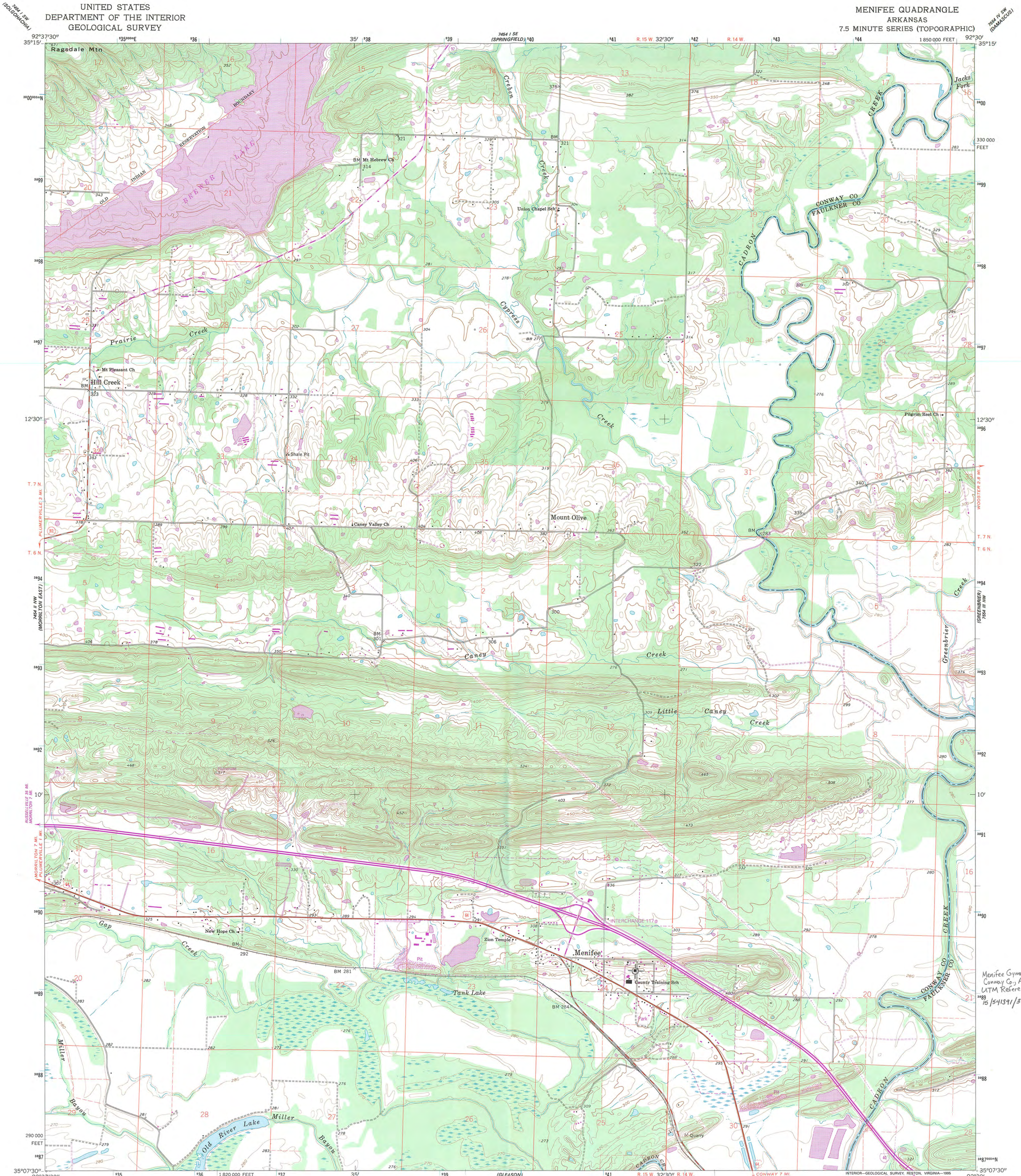
Conway County, AR

Zac Cothren

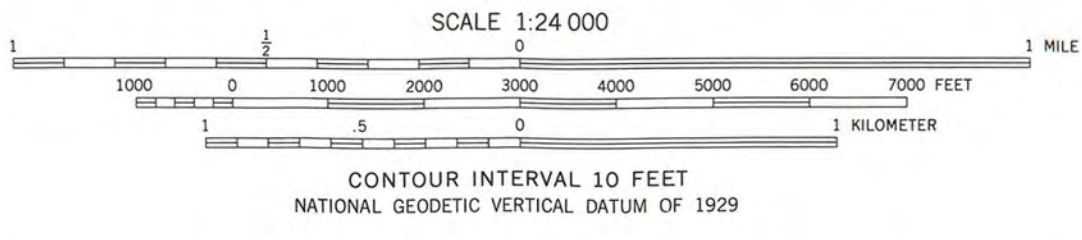
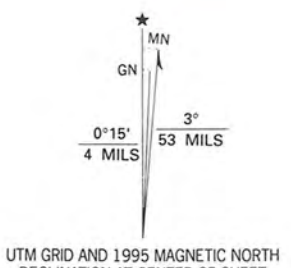
December 2001

AHPP

View of front facade (west) looking east



Produced by the United States Geological Survey
Compiled by photogrammetric methods from imagery dated 1958
Field checked 1961
North American Datum of 1927 (NAD 27). Projection and
10 000-foot ticks: Arkansas coordinate system, north zone
(Lambert conformal conic)
Blue 1000-meter Universal Transverse Mercator ticks, zone 15
North American Datum of 1983 (NAD 83) is shown by dashed
corner ticks. The values of the shift between NAD 27 and NAD 83
for 7.5-minute intersections are obtainable from National Geodetic
Survey NADCON software



ROAD CLASSIFICATION	
Primary highway, hard surface	Light-duty road, hard or improved surface
Secondary highway, hard surface	Unimproved road
Interstate Route	U. S. Route
	State Route

THIS MAP COMPLIES WITH NATIONAL MAP ACCURACY STANDARDS
FOR SALE BY U. S. GEOLOGICAL SURVEY, DENVER, COLORADO 80225, OR RESTON, VIRGINIA 22092
AND ARKANSAS GEOLOGICAL COMMISSION, LITTLE ROCK, ARKANSAS 72204
A FOLDER DESCRIBING TOPOGRAPHIC MAPS AND SYMBOLS IS AVAILABLE ON REQUEST

Revisions shown in purple compiled in cooperation with
State of Arkansas agencies from imagery dated 1990-91
and other sources. Map edited 1995
Information shown in purple may not meet USGS content
standards and may conflict with previously mapped contours

MENIFEE, AR
35092-85-1F-024
1991
DMA 7454 II SE-SERIES V884

Menifee Gymnasium
Conway Co., AR
UTM Reference:
15 1541391/3889253



The Department of Arkansas Heritage

Mike Huckabee, Governor
Cathie Matthews, Director

Arkansas Arts Council

Arkansas Natural Heritage
Commission

Historic Arkansas Museum

Delta Cultural Center

Old State House Museum



Arkansas Historic Preservation Program

1500 Tower Building
323 Center Street
Little Rock, AR 72201
(501)324-9880

fax: (501)324-9184
tdd: (501)324-9811

e-mail:
info@arkansaspreservation.org
website:
www.arkansaspreservation.org



April 11, 2002

Carol D. Shull
Chief of Registration
United State Department of the Interior
National Register of Historic Places
National Park Service
800 North Capitol Street, Suite 250
Washington, D.C. 20002

RE: Meniffee Gymnasium—Meniffee, Conway County

Dear Carol:

We are enclosing for your review the nomination of the above-referenced property. The Arkansas Historic Preservation Program has complied with all applicable nominating procedures and notification requirements in the nomination process.

Thank you for your consideration in this matter.

Sincerely,

Cathie Matthews
State Historic Preservation Officer

CM:ab

Enclosures

An Equal Opportunity Employer



PRINTED WITH
SOY INK