



416

United States Department of Interior  
National Park Service

National Register of Historic Places  
Registration Form

This form is for use in nominating or requesting determinations for individual properties and districts. See instructions in *How to Complete the National Register of Historic Places Registration Form* (National Register Bulletin 16A). Complete each item by marking "x" in the appropriate box or by entering the information requested. If an item does not apply to the property being documented, enter "N/A" for "not applicable." For functions, architectural classification, materials, and areas of significance, enter only categories and subcategories from the instructions. Place additional entries and narrative items on continuation sheets (NPS Form 10-900A). Use a typewriter, word processor, or computer, to complete all items.

1. Name of Property

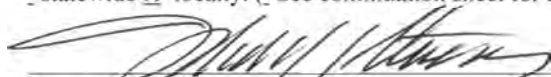
historic name Oak Creek Parkway  
other names/site number N/A


2. Location

street & number	Located between Grant Park at Hawthorne Avenue and Rawson Avenue	N/A	not for publication
city or town	South Milwaukee	N/A	vicinity
state Wisconsin	code WI	county Milwaukee	code 079
			zip code 53172

3. State/Federal Agency Certification

As the designated authority under the National Historic Preservation Act, as amended, I hereby certify that this X nomination request for determination of eligibility meets the documentation standards for registering properties in the National Register of Historic Places and meets the procedural and professional requirements set forth in 36 CFR Part 60. In my opinion, the property X meets \_ does not meet the National Register criteria. I recommend that this property be considered significant \_ nationally \_ statewide X locally. ( See continuation sheet for additional comments.)

  
Signature of certifying official/Title

  
Date

State Historic Preservation Officer - Wisconsin

State or Federal agency and bureau

In my opinion, the property \_ meets \_ does not meet the National Register criteria.  
( See continuation sheet for additional comments.)

Signature of commenting official/Title

Date

State or Federal agency and bureau

Oak Creek Parkway

Milwaukee

Wisconsin

Name of Property

County and State

**4. National Park Service Certification**I hereby certify that the property is:  
☒ entered in the National Register.☐ See continuation sheet☐ determined eligible for the

National Register.

☐ See continuation sheet.☐ determined not eligible for the

National Register.

☐ See continuation sheet.☐ removed from the National

Register.

☐ other, (explain:)

Edson H. Beall

6-27-11

Signature of the Keeper

Date of Action

**5. Classification****Ownership of Property**  
(check as many boxes as  
as apply)**Category of Property**  
(Check only one box)**Number of Resources within Property**  
(Do not include previously listed resources  
in the count)

<input type="checkbox"/> private	<input type="checkbox"/> building(s)	<input type="checkbox"/> contributing	<input type="checkbox"/> noncontributing
X <input type="checkbox"/> public-local	X <input type="checkbox"/> district	2	2 buildings
<input type="checkbox"/> public-State	<input type="checkbox"/> structure	1	0 sites
<input type="checkbox"/> public-Federal	<input type="checkbox"/> site	7	8 structures
	<input type="checkbox"/> object	0	0 objects
		10	10 total

**Name of related multiple property listing:**  
(Enter "N/A" if property not part of a multiple property  
listing.)

Milwaukee County Parkway System

**Number of contributing resources  
previously listed in the National Register**

0

**6. Function or Use****Historic Functions**

(Enter categories from instructions)

LANDSCAPE/ park

TRANSPORTATION / road-related (vehicular)

RECREATION AND CULTURE / outdoor recreation

**Current Functions**

(Enter categories from instructions)

LANDSCAPE/ park

TRANSPORTATION (road-related (vehicular)

RECREATION AND CULTURE / outdoor recreation

**7. Description****Architectural Classification**

(Enter categories from instructions)

OTHER : Rustic

**Materials**

(Enter categories from instructions)

Foundation STONE

walls STONE, SYNTHETICS

roof ASPHALT

other CONCRETE

**Narrative Description**

(Describe the historic and current condition of the property on one or more continuation sheets.)

**United States Department of the Interior**  
**National Park Service**

**National Register of Historic Places**  
**Continuation Sheet**

Section 7 Page 1

Oak Creek Parkway  
South Milwaukee, Milwaukee County, Wisconsin

---

**Introduction and General Setting**

The Oak Creek Parkway is located within the City of South Milwaukee, in Milwaukee County, Wisconsin. The Parkway is located along the outer loop of two concentric, connected, oval-shaped chains of parkways first conceived in 1923. Known as the "Emerald Necklace," the loop twice encircles the county, comprising a significant portion of the Milwaukee County Park and Parkway System.

Oak Creek follows a northwesterly course from its junction with Lake Michigan in the City of South Milwaukee through the Town of Oak Creek and into southeastern Milwaukee County. The 2.75-mile segment of the Oak Creek Parkway (Parkway) covered in this nomination is located between Grant Park on the east and Rawson Avenue on the west, and generally follows the development plan included in the 1931-1932 *Biennial Report* of the Milwaukee County Regional Planning Department and the Milwaukee County Park Commission. The Parkway includes 20 resources; ten contributing and ten noncontributing. The road, eight vehicular bridges, two pedestrian bridges, railroad bridge, dam, baseball diamond, and tennis courts are counted as structures. A warming house and three maintenance/utility sheds are counted as buildings. The Parkway and its landscape features are counted as one contributing site. Features of the Parkway landscape include Oak Creek, a mill pond, pedestrian paths, memorial, playground, signs, retaining walls, and a mix of dense vegetation along the creek with open clearings for recreational space. Noncontributing resources within the Parkway are categorized based on recent construction dates, which are outside of the Parkway's period of significance, which spans from 1931 to 1960. One resource (Railroad Bridge) predates the parkway; however, it was incorporated into the final design and therefore is contributing.

The Parkway begins at the southern edge of Grant Park at Hawthorne Avenue and follows Oak Creek in a curvilinear manner as it meanders northwest to 15<sup>th</sup> Avenue and turns south and continues to Rawson Avenue. The major roads that intersect the Parkway include Mill Road, North Chicago Avenue (State Trunk Highway [STH] 32), 15<sup>th</sup> Avenue, and Rawson Avenue. Residences line varying sides of the Parkway along select segments of the corridor.

The Oak Creek Parkway Drive (Drive) follows Oak Creek. The creek runs the length of the Parkway; however, it continues south of the Parkway's historic boundary. The topography along the Parkway consists primarily of rolling hills with heavily wooded properties, as well as flat, open, low-lying areas between the Drive and Oak Creek. The Drive has an asphalt surface flanked by concrete curb and gutter and modern Parkway signs.

Vegetation along the Parkway is dominated by mixed-age stands of native trees. Areas along the creek tend to have shrubby undergrowth interspersed with the mixed-age forest. Wider spaces between the

**United States Department of the Interior**  
**National Park Service**

**National Register of Historic Places**  
**Continuation Sheet**

Section 7 Page 2 Oak Creek Parkway  
South Milwaukee, Milwaukee County, Wisconsin

Drive and creek include open space with mowed grassy areas and scattered mature tree plantings. The following is a list of the resources contained within the Parkway<sup>1</sup>:

Oak Creek Parkway	c.1931	Contributing Site
Railroad Bridge (P-40-0571)	c.1890	Contributing Structure
Maintenance Building	c.1935	Contributing Building
Oak Creek Parkway Drive	1931	Contributing Structure
Vehicular Bridge (P-40-0740)	1931	Contributing Structure
Vehicular Bridge (P-40-0936)	1931	Contributing Structure
Mill Pond Dam	1932	Contributing Structure
Warming House	c.1935	Contributing Building
Pedestrian Bridge	c.1945	Contributing Structure
Baseball diamond	c.1980	Noncontributing Structure
Tennis Courts	c.2005	Noncontributing Structure
Pedestrian Bridge	c.1945	Contributing Structure
Modern Utility Building	c.2000	Noncontributing Building
Modern Utility Building	c.2000	Noncontributing Building
Vehicular Bridge (B-40-0521-81)	c.2002	Noncontributing Structure
Vehicular Bridge (B-40-0672)	2002	Noncontributing Structure
Vehicular Bridge (B-40-0218)	2002	Noncontributing Structure
Vehicular Bridge (B-40-0026)	1999	Noncontributing Structure
Vehicular Bridge (B-40-0601)	1992	Noncontributing Structure
Vehicular Bridge (B-40-0714)	2008	Noncontributing Structure

The following text describes the Parkway in greater detail in segments beginning at the eastern terminus.

*Grant Park to Mill Road*

The Parkway begins at the intersection of Hawthorne Avenue, Grant Park Drive, and Oak Creek Drive, at the southern end of Grant Park and the Grant Park Golf Course. At this point, a modern Oak Creek Parkway sign marks the beginning of the route, which also includes pendant light posts. Concrete curb and gutter are also in place. The Drive slopes gently downhill as it winds southwesterly from its terminus and begins to curve northwest as it intersects Oak Creek. Thick vegetation lines both sides of the Parkway, and a narrow, paved pedestrian path is situated along the west side of the Drive. A

---

<sup>1</sup> Wisconsin Department of Transportation (WisDOT) bridge ID numbers are included when known.



**United States Department of the Interior**  
**National Park Service**

**National Register of Historic Places**  
**Continuation Sheet**

Section 7 Page 3

Oak Creek Parkway  
South Milwaukee, Milwaukee County, Wisconsin

---

modern concrete girder bridge B-40-0218 (noncontributing) carries the Drive over Oak Creek. Constructed in 2002, the vehicular bridge was built using materials similar to those of the original structure. The bridge's abutments are faced in a coursed stone veneer, and the parapet includes four lines of squared metal rails running between a series of coursed limestone pilasters capped in concrete.

A single story maintenance building (contributing) with a rectangular plan is located west of the 2002 vehicular bridge. Originally constructed c.1935, the building is composed of two sections; the western half of the building is sheathed in brick set in a common bond and is covered by a hip roof, while the eastern half is constructed of concrete block and covered by a side gable roof. Two rows of corbelled brick run beneath the roofline on the brick half of the north elevation, and two windows are centrally located within this section of the building. The windows are covered in wire mesh screens and feature brick sills. A single door is located on the west elevation and several vents perforate the brick half of the building on the north and west elevations. A metal double-door is located on the concrete block half of the north facade. Vertical wood siding is located in the east gable end.

A c.1931 segmented, random ashlar limestone retaining wall lines a short section of the southern edge of the Drive west of the maintenance building. Slightly west of its endpoint a second limestone retaining wall begins on the north side of the Drive. A cut limestone staircase located at the eastern end of the northern retaining wall leads up a hill to an unpaved pedestrian path through a wooded area. As the northern retaining wall tapers down towards its western terminus, a cutaway limestone bench is located within the wall. A paved pedestrian walkway and bike path parallels the north side of the Drive along this stretch. An earthen pedestrian trail leads from the Drive through the wooded area alongside the northern edge of Oak Creek. The trail extends to the intersection of the Drive and Mill Road, and is well worn and easy to follow.

Bridge P-40-740 (contributing) carries the Drive west over Oak Creek, just prior to its intersection with Mill Road. Constructed in 1931, the concrete arch with limestone veneer is a 30 foot-span topped by a wooden railing. A modern, concrete retaining wall lines the northwest bank of Oak Creek on the north side of the bridge, and a historic, random ashlar limestone retaining wall lines the southern bank of Oak Creek on the south side of the bridge. A cut limestone culvert is situated within the south retaining wall, providing an outlet for a second, smaller waterway.

*Mill Road to North Chicago Avenue (STH 32)*

Bridge P-40-936 (contributing) carries Mill Road over Oak Creek at the intersection with the Parkway Drive. Constructed in 1931 of concrete with a cut limestone veneer, the arch is a 30-foot span and features a wooden railing. A concrete dam, built in 1932 (contributing), with stone facing is located

**United States Department of the Interior**  
**National Park Service**

**National Register of Historic Places**  
**Continuation Sheet**

Section 7 Page 4

Oak Creek Parkway  
South Milwaukee, Milwaukee County, Wisconsin

immediately west of this bridge, and separates Oak Creek from Mill Pond.<sup>2</sup> The Drive curves around the north side of Mill pond just west of the intersection with Mill Road. Concrete curb and gutter line both sides of the drive, and streetlights remain consistent. A concrete sidewalk also runs parallel to the Drive along the north bank of Mill pond.

A c.1935 warming house (contributing) is located on the south bank of Mill pond. This one story building has a rectangular plan and is sheathed in randomly coursed ashlar block. The side gable roof is covered in asphalt shingles and is supported by exposed rafters and large wooden corner brackets. A one room, side gable ell is located at each end wall. A large, five-part box bay with six-over-six, double hung sash separated by wide wood mullions and a six-part transom window is located on the north facade. Pairs of six-over-six, double hung sash with six-pane transoms are also located on each end wall of the central mass. Each side ell has a single fixed window on the end wall and on the north facade. All windows rest upon concrete sills, with concrete lintels. Double entry doors with concrete surrounds are located on the north facade at either side of the box bay. These doors are accessed by a stone terrace enclosed by a wooden balustrade that extends across the north elevation. A curved ashlar block balustrade projects from both ends of the facade and leads down a single flight of concrete stairs to a concrete patio at the edge of Mill pond. At this point, two concrete docks project slightly out over the water.

Two newly replaced bridges (noncontributing) are located northwest of Mill pond. Bridge B-40-0714 was constructed in 2008, and bridge B-40-0026 was constructed in 1999. Both concrete girder vehicular bridges are stylistically consistent with the other replacement bridges within the Parkway and are constructed of materials similar to the original Parkway structures. The bridges display a cut stone veneer with randomly coursed ashlar pilasters supporting four rows of steel rails along each side elevation. A concrete curb and gutter and standard light poles and fixtures flank this segment of the Drive. Maintained open spaces are located at varying points on either side of this segment of the Drive. A small memorial is located south of the creek along STH 32.

*North Chicago Avenue (STH 32) to 15<sup>th</sup> Avenue*

A c.2002 vehicular bridge B 40-521-81 (noncontributing) is located immediately south of the intersection of North Chicago Avenue (STH 32) and the Parkway Drive and carries STH 32 over Oak Creek. Consistent with the modern replacement bridges throughout the Parkway, the STH 32 bridge features a cut stone veneer with randomly coursed ashlar posts supporting rows of steel rails along each side elevation.

---

<sup>2</sup> This dam replaced a previous dam on Oak Creek at this site. The Mill Pond is a pre-existing landscape element that was included in and adapted to the Park Commission's plans.

**United States Department of the Interior**  
**National Park Service**

**National Register of Historic Places**  
**Continuation Sheet**

Section 7 Page 5

Oak Creek Parkway  
South Milwaukee, Milwaukee County, Wisconsin

---

Past the intersection with STH 32, the Drive angles north and the appearance of the Parkway changes slightly. Although the Drive is lined with concrete curb and gutter, the street lights are dissimilar and private residences are located along the northeast side of the Drive along this segment. Bridge B-40-0601 (noncontributing) was constructed in 1992, and is located slightly west of the intersection of Oak Street and the Parkway Drive. The girder bridge is constructed of concrete with a stone veneer and a wooden railing along each side elevation. An asphalt bike and pedestrian path runs along the north edge of the Drive and a maintained grassy open space separates the Drive from Oak Creek. A c.1945 timber pedestrian bridge (contributing) constructed of wooden planks set across two support logs with simple wood railings leads from the Parkway to a residential neighborhood to the north.

South of Elm Street the Drive turns due west. The Chicago and NorthWestern Railroad bridge P-40-0571 (contributing), a c.1890 two-span arch with limestone veneer, carries a now-removed rail line across both the Drive and the adjacent Oak Creek. One arch spans a sidewalk and the creek bed, while the second arch spans the Drive. Beyond this bridge and west to the intersection with 15<sup>th</sup> Avenue, the Drive curves gently along Oak Creek. Concrete curb and gutter continue along the Drive, as well as a concrete sidewalk along the north edge of the roadway. Maintained open grassy space separates the Drive from Oak Creek.

*15<sup>th</sup> Avenue to Rawson Avenue*

The appearance of the Parkway remains consistent westward through the intersection with 15<sup>th</sup> Avenue as it curves and meanders south. The open, grassy spaces on either side of the Drive are wide, and more level than in other segments of the Parkway. Vehicular bridge B-40-672 (noncontributing) constructed in 2002 carries 15<sup>th</sup> Avenue over Oak Creek immediately north of the Drive. The concrete girder bridge features a cut stone veneer with coursed ashlar pilasters supporting rows of steel rails along each side. An open recreation area with a modern playground and pedestrian paths is located on the north side of Oak Creek west of 15<sup>th</sup> Avenue. A large recreation field and a c.1980 baseball diamond (noncontributing) and eight c.2005 tennis courts (noncontributing) is located south of the creek and west of 15<sup>th</sup> Avenue. A one room, single story utility shed (noncontributing) with a hip roof and square plan is located on the western edge of the parkway boundary. Constructed c.2000, the building lacks windows and is sheathed in vinyl siding. A concrete retaining wall is located south of the utility shed, and supports both the east and west banks of Oak Creek. A second timber pedestrian bridge (contributing) constructed c.1945 and identical to the pedestrian bridge located between North Chicago Avenue and 15<sup>th</sup> Avenue, crosses Oak Creek parallel to Beech Street south of the utility shed.

A one room, single story building (noncontributing) with a hip roof and square plan is located on the western edge of the Drive, just south of the retaining wall. Constructed c.2000, the building is identical to the utility shed to its north. It lacks windows and is sheathed in vinyl siding. Across from

**United States Department of the Interior**  
**National Park Service**

**National Register of Historic Places**  
**Continuation Sheet**

Section 7 Page 6

Oak Creek Parkway  
South Milwaukee, Milwaukee County, Wisconsin

---

this building is a large, open grassy area traversed by concrete pedestrian and bike paths and separating the Drive from the residential neighborhood to the east. Immediately south of this grassy area is the intersection with Rawson Avenue, at which point the appearance of the Drive and the landscape change dramatically, signaling the end of the Oak Creek Parkway. Oak Creek continues on a southwesterly course, and scattered county-owned parcels line the creek bed; however, the open green spaces and the Drive terminate as the area becomes more commercial than residential and recreational. The county-owned parcels were acquired more recently and do not represent the development plan from the 1931-1932 *Biennial Report*.

Oak Creek Parkway  
Name of Property

Milwaukee County  
County and State

Wisconsin

## 8. Statement of Significance

### Applicable National Register Criteria

(Mark "x" in one or more boxes for the criteria qualifying the property for the National Register listing.)

- ☒ A Property is associated with events that have made a significant contribution to the broad patterns of our history.
- ☐ B Property is associated with the lives of persons significant in our past.
- ☒ C Property embodies the distinctive characteristics of a type, period, or method of construction or represents the work of a master, or possesses high artistic values, or represents a significant and distinguishable entity whose components lack individual distinction.
- ☐ D Property has yielded, or is likely to yield, information important in prehistory or history.

### Criteria Considerations

(Mark "x" in all the boxes that apply.)

Property is:

- ☐ A owned by a religious institution or used for religious purposes.
- ☐ B removed from its original location.
- ☐ C a birthplace or grave.
- ☐ D a cemetery.
- ☐ E a reconstructed building, object, or structure.
- ☐ F a commemorative property.
- ☐ G less than 50 years of age or achieved significance within the past 50 years.

### Areas of Significance

(Enter categories from instructions)

COMMUNITY PLANNING AND DEVELOPMENT  
LANDSCAPE ARCHITECTURE

### Period of Significance

1931-1960

### Significant Dates

1931, 1932, 1935

### Significant Person

(Complete if Criterion B is marked)

N/A

### Cultural Affiliation

N/A

### Architect/Builder

Boerner, Alfred

### Narrative Statement of Significance

(Explain the significance of the property on one or more continuation sheets.)



**United States Department of the Interior**  
National Park Service

**National Register of Historic Places**  
**Continuation Sheet**

Section 8 Page 1

Oak Creek Parkway  
South Milwaukee, Milwaukee County, Wisconsin

**Statement of Significance**

The Oak Creek Parkway meets National Register *Criterion A: Community Planning and Development* and *Criterion C: Landscape Architecture*. The Parkway is locally significant as an individual component in the Milwaukee County Parkway System, which was largely constructed under Depression-era federal work relief efforts. The Oak Creek Parkway was designed by Alfred Boerner<sup>3</sup> as a component in a large chain of parkways that encircled Milwaukee County. It is largely intact and the original intention of the parkway plan is clearly visible. The period of significance extends from 1931, when construction of the Oak Creek Parkway Drive began, to 1960, when the National Register's 50-year cutoff is reached.

The Oak Creek Parkway is one of nine parkways, established between 1923 and 1960, that are addressed in the Multiple Property Document (MPD), "The Milwaukee County Parkway System." As such, the Parkway is linked to the associated historic contexts of "Community Planning and Development in Milwaukee County, 1923-1960," "Federal Work Relief Programs in Milwaukee County, 1933-1942," and "Landscape Architecture in the Milwaukee County Parkway System, 1923-1960," as outlined in the MPD.

*History of the Oak Creek Parkway*

Charles B. Whitnall included the Oak Creek Parkway in his initial study for the Milwaukee County Parkway System. The Parkway would connect Grant Park, the southernmost park of Lake Michigan Parkway South, with the Root River Parkway. Plans for the first segment were adopted by the county board in 1926. Land for this Parkway segment, which followed Oak Creek from Lake Michigan to the Chicago and NorthWestern Railroad bridge, just west of 11<sup>th</sup> Avenue, was acquired by means of condemnation and an assessment of benefits and damages in 1930. Landowners dedicated additional land in 1932, 1934, and 1936.<sup>4</sup>

In 1929 and 1930 the Milwaukee County Park Commission's planning department prepared plans for the parkway unit, which included sketches for five limestone veneered bridges. The 1931-1932

---

<sup>3</sup> Alfred L. Boerner served as landscape architect in the Milwaukee County Regional Planning Department from 1926 to 1952. In 1952 he replaced George Hansen as Superintendent of Parks and served in that capacity until 1955. Though Boerner arrived in Milwaukee County shortly after the county parkway system had been conceived, it was many of his designs that made the parkway system a reality. Boerner's designs implemented the proposed plans by Whitnall and the Park Commission.

<sup>4</sup> Milwaukee County Park Commission and Milwaukee County Regional Planning Department, *Annual Report for the year 1926* (Milwaukee: Milwaukee County Regional Planning Department, 1927), 40; Milwaukee County Park Commission and Milwaukee County Regional Planning Department, *Biennial Report: 1929-1930* (Milwaukee: Court House, 1930), 39; Milwaukee County Regional Planning Department and Milwaukee County Park Commission, *Quadrennial Report: 1933-1936* (Milwaukee: Court House, 1937), 36.

**United States Department of the Interior**  
**National Park Service**

**National Register of Historic Places**  
**Continuation Sheet**

Oak Creek Parkway

Section 8 Page 2

South Milwaukee, Milwaukee County, Wisconsin

*Biennial Report* included an illustrated plan for the junction of Grant Park and Oak Creek Parkway. This plan featured a curvilinear drive that alternated along the north and south sides of the creek and abundant plantings. During 1931 and 1932, Milwaukee County Department of Outdoor Relief (DOR) workers laid more than one mile of macadam pavement from Grant Park to North Chicago Avenue. Additionally, workers constructed concrete curb and gutter, installed storm sewers, and laid black-top walks. By 1936 this Parkway segment was complete. It encompassed 99.3 acres of land and featured one shelter, a mill pond, a ravine, dam, 1.75 miles of drive, and a bridle path.<sup>5</sup>

Works Progress Administration (WPA)-funded labor completed erosion control along Oak Creek by adding retaining walls and widening and deepening the creek channel in 1943. A footbridge at an unspecified location was constructed in 1948. After federal funding ceased, the Park Commission added a Parkway segment along Oak Creek from Rawson Avenue to the railroad tracks west of Pennsylvania Avenue. Work began in 1949 and the segment was completed in 1956.<sup>6</sup> Milwaukee County continued to acquire parcels of land along Oak Creek after 1960. Most of these parcels are discontinuous and are located south of Rawson Avenue.

An informal recreational area located between the Drive and 15<sup>th</sup> Avenue near South Milwaukee High School was developed between 1956 and 1963, according to aerial photographs. By 1963 the open area included informal sand lots, which may have served as baseball fields. The current baseball diamond was installed c.1980, and portable bleachers have since been added to the site. Based on aerial photographs, a cluster of eight tennis courts were added to this recreational area c.2005.<sup>7</sup>

*Rustic Design of the Oak Creek Parkway*

The Oak Creek Parkway is a good representative example of a designed landscape property type. In particular, the Parkway is unified throughout the Drive through the use of a rustic design aesthetic that is applied to the Parkway's buildings, retaining walls, dam, culverts, and bridges.

---

<sup>5</sup> Milwaukee County Park Commission and Milwaukee County Regional Planning Department, *Biennial Report: 1929-1930*, 43; Milwaukee County Regional Planning Department and Milwaukee County Park Commission, *Biennial Report: 1931-1932* (Milwaukee: Court House, 1933), 41; Milwaukee County Regional Planning Department and Milwaukee County Park Commission, *Quadrennial Report: 1933-1936*, 36.

<sup>6</sup> Milwaukee County Park Commission and Milwaukee County Regional Planning Board, *Quadredecennial Report: 1937-1950 Inclusive* (Milwaukee: Court House, 1951), 113-115.

<sup>7</sup> *Milwaukee County Aerial Photographs: 1956, 1963, 1995, and 2005*

<http://maps.milwaukeecounty.org/Geocortex/Essentials/Web/Viewer.aspx?Site=PUBLIC> (accessed 22 January 2010).

**United States Department of the Interior**  
**National Park Service**

**National Register of Historic Places**  
**Continuation Sheet**

Section 8 Page 3

Oak Creek Parkway  
South Milwaukee, Milwaukee County, Wisconsin

Rustic architecture emerged from a tradition of domestic and resort architecture in rugged and scenic places such as the coast of Maine, the Adirondacks of New York, the San Francisco Bay Area, and the Sierra Madre of California and was characterized by the use of natural, local materials and handcrafted finishes. As the idea of developing nature and wilderness for personal pleasure extended throughout America, an increasing number of public parks, at the local, state, and national levels, adopted the rustic style of architecture for numerous park structures.<sup>8</sup>

In the case of the Oak Creek Parkway, much of the rustic design aesthetic was the result of CCC and WPA labor work during the Depression era, which utilized local materials, including timber and limestone, to build bridges, retaining walls, and comfort stations. Examples of Rustic architecture within the Parkway include a c.1935 warming house adjacent to the mill pond and a c.1935 brick maintenance building. Additionally, WPA workers installed limestone retaining walls and bridges with limestone veneer throughout the Parkway which reflect the tenets of rustic design through their use of natural, local materials and handcrafted finishes.

*Integrity*

Currently, the initial segment of the Parkway generally follows the original alignment the development plan included in the 1931-1932 *Biennial Report*. A parkway drive follows Oak Creek, alternating on both sides of the creek, from Grant Park to Rawson Avenue at 15<sup>th</sup> Avenue. Segments of the Oak Creek Parkway feature natural plantings, as well as characteristic elements, including the mill pond, open recreation spaces and picnic areas consistent with early development plans. Several of the masonry veneered bridges have recently been replaced with modern spans. However, most of these modern bridges reflect the original design intent of the parkway and feature rustic materials. Due to the scale of the intrusions relative to the size of the Parkway as a whole, the addition of a c.1980 baseball field and c.2005 tennis courts in the northwest corner of the Parkway do not detract from the Parkway's integrity. The addition of active recreational facilities throughout the Parkway ensures that the parkway land continues to serve the recreational and athletic needs of the adjacent community and high school.

Although the Parkway has been slightly altered, it still conveys its original intention as a component within the overall system of parkways. The major features that contribute to the overall significance of the site, including the creek, park drive, and natural setting, are still present.

---

<sup>8</sup> Linda F. McClelland, "Historic Park Landscapes in National and State Parks," (National Register of Historic Places Multiple Property Documentation Form, August 1995), E: 27.

**United States Department of the Interior**  
**National Park Service**

**National Register of Historic Places**  
**Continuation Sheet**

Section 8 Page 4

Oak Creek Parkway  
South Milwaukee, Milwaukee County, Wisconsin

*Conclusion*

The Oak Creek Parkway meets National Register *Criterion A: Community Planning and Development* as a significant component in the Milwaukee County parkway system, which was implemented with federal aid work relief. In accordance with the registration requirements of the *Milwaukee County Parkway System MPD*, the Parkway is associated with the overall parkway system as it was designed, developed, and managed by the Milwaukee County Park Commission between 1923 and 1960. Moreover, the Parkway has a direct and illustrated association with Whitnall's original vision for a county-wide parkway system – it was identified in Whitnall's 1923 map for a parkway system and plans were provided in the County's 1931-1932 *Biennial Report*. Although several of the Parkway's resources, including the mill pond and associated dam, pre-date the parkway system, they were included in Whitnall's 1923 vision for a unified system of public green space and became incorporated into and associated with the system during parkway implementation. The millpond became part of the recreational use of the parkway with the warming house added at this location to facilitate the pond's use for skating during the winter months.

Additionally, the Oak Creek Parkway reflects the aims of the Milwaukee County Park Commissioners who advocated developing a parkway system to relieve urban congestion, provide a hygienic landscape, provide outdoor recreational spaces, increase adjacent property values, and control flood-prone watersheds. The Parkway also maintains a strong association with federal aid work relief in Milwaukee County as much of the Parkway's implementation occurred under the umbrella of federal work-relief efforts. CCC and WPA labor completed development tasks while operating out of camps along the Parkway. The Oak Creek Parkway retains strong integrity of location, design, setting, association, and feeling. Alterations to the Parkway, including the addition of modern bridges, ensure that the Parkway will continue to function into the twenty-first century.

The Oak Creek Parkway also meets National Register *Criterion C: Landscape Architecture* as a good representative example of a designed landscape property type. In accordance with the registration requirements of the *Milwaukee County Parkway System MPD*, the Parkway is unified through the use of a rustic design aesthetic, including the use of natural local materials, and handcrafted masonry finishes, which are applied to the Parkway's building, retaining walls, dam, culverts, and bridges. Despite slight alterations to the Parkway, it continues to demonstrate the design intent of parkway planning and development in Milwaukee County. The setting of the parkway, along the creek, with vistas of natural vegetation interspersed with open areas containing specimen plants reflects the design aesthetic of the parkway system. As stated in the *Milwaukee County Parkway System MPD's* registration requirements, it is not necessary for an eligible parkway to look exactly like its original design as long as it retains a significant amount of its characteristic features to make its historic character clearly recognizable. The Oak Creek Parkway includes a circulation system, vegetation, watershed feature, retaining walls, buildings, and bridges. These characteristic features contribute to



**United States Department of the Interior**  
**National Park Service**

**National Register of Historic Places**  
**Continuation Sheet**

Section 8 Page 5

Oak Creek Parkway  
South Milwaukee, Milwaukee County, Wisconsin

the Parkway's ability to serve as a good representative example of its period of design and construction and its landscape type.

*Archaeological Potential*

A historical marker located along Mill Road at the Mill Pond dam identifies the Mill Pond as the location of the first industry leading to the settlement of the Town of Oak Creek. As a result, there is a potential for historic archaeological remains near this original settlement site. Within the remainder of the Parkway, research indicates that the structures and buildings present are original to their respective sites and, therefore, it is unlikely that any historic archaeological remains are located within this portion of the Parkway boundary. The literature indicates the presence of habitation and ceremonial sites in the vicinity of the current parkway. These uses date back 1000 years or more and continued until the removal of Native Americans in the 19<sup>th</sup> century. Increase Lapham mentioned the presence of conical mounds in the area of the mill pond; however, no surface indications of the site remain. It is likely that any remains of pre-European cultures located within the district would have been greatly disturbed by the building activity associated with subsequent development in the area.



Oak Creek Parkway  
Name of Property

Milwaukee County  
County and State

Wisconsin

## 9. Major Bibliographic References

(Cite the books, articles, and other sources used in preparing this form on one or more continuation sheets.)

### Previous Documentation on File (National Park Service):

- preliminary determination of individual listing (36 CFR 67) has been requested
- previously listed in the National Register
- previously determined eligible by the National Register
- designated a National Historic landmark
- recorded by Historic American Buildings Survey #
- recorded by Historic American Engineering Record #

### Primary location of additional data:

- ☒ State Historic Preservation Office
- Other State Agency
- Federal Agency
- Local government
- University
- Other

Name of repository:

## 10. Geographical Data

Acreage of Property 178.8 Acres

UTM References (Place additional UTM references on a continuation sheet.)

1 16 428570 4752495  
Zone Easting Northing

2 16 428800 4752845  
Zone Easting Northing

3 16 429635 4752560  
Zone Easting Northing

4 16 431135 4750752  
Zone Easting Northing

☒ See Continuation Sheet

Verbal Boundary Description (Describe the boundaries of the property on a continuation sheet)

Boundary Justification (Explain why the boundaries were selected on a continuation sheet)

## 11. Form Prepared By

name/title	Christine Long, Emily Pettis and Mollie Douglas	date	February 2010
organization	Mead & Hunt	telephone	(608) 273-6380
street & number	6501 Watts Road	zip code	53719
city or town	Madison	state	WI

**United States Department of the Interior**  
**National Park Service**

**National Register of Historic Places**  
**Continuation Sheet**

Section 9 Page 1

Oak Creek Parkway,  
South Milwaukee, Milwaukee County, Wisconsin

**Bibliography**

Bruce, William G., ed. *History of Milwaukee, City and County*. Chicago: S.J. Clarke Publishing Co., 1922.

McClelland, Linda F. "Historic Park Landscapes in National and State Parks." (National Register of Historic Places Multiple Property Documentation Form, August 1995).

Milwaukee County. *Milwaukee County Aerial Photographs: 1956, 1963, 1995, and 2005*  
<http://maps.milwaukeecounty.org/Geocortex/Essentials/Web/Viewer.aspx?Site=PUBLIC>  
(accessed 22 January 2010).

Milwaukee County Park Commission and Milwaukee County Regional Planning Board.  
*Quadredecennial Report: 1937-1950 Inclusive*. Milwaukee: Court House, 1951.

Milwaukee County Park Commission and Milwaukee County Regional Planning Department. *Annual Report for the year 1926*. Milwaukee: Milwaukee County Regional Planning Department, 1927.

----- *Biennial Report: 1929-1930*. Milwaukee: Court House, [1930] 1930.

Milwaukee County Regional Planning Department. *Second Annual Report*. Milwaukee: Milwaukee County Regional Planning Department, 1925.

Milwaukee County Regional Planning Department and Milwaukee County Park Commission.  
*Biennial Report: 1931-1932*. Milwaukee: Court House, 1933.

----- *Quadrennial Report: 1933-1936*. Milwaukee: Court House, 1937.

Newton, Norman T. *Design on the Land: The Development of Landscape Architecture*. Cambridge: Harvard University Press, 1971.

Tishler, William H. "H.W.S. Cleveland." In *American Landscape Architecture: Designers and Places*. Edited by William H. Tishler. *Building Watchers Series*. Washington D.C.: Preservation Press, 1989.

Wyatt, Barbara, ed. *Cultural Resource Management in Wisconsin*, Vol. II. Madison, Wis.: State Historical Society of Wisconsin, 1986.

**United States Department of the Interior**  
**National Park Service**

**National Register of Historic Places**  
**Continuation Sheet**

Oak Creek Parkway  
South Milwaukee, Milwaukee County, Wisconsin

Section 10 Page 1

**UTM References – Continued**

5	16	431144	4750738
	Zone	Easting	Northing
6	16	430590	4750910
	Zone	Easting	Northing
7	16	429835	4751560
	Zone	Easting	Northing
8	16	429185	4752415
	Zone	Easting	Northing
9	16	428880	4752250
	Zone	Easting	Northing
10	16	428758	4751578
	Zone	Easting	Northing
11	16	428644	4751581
	Zone	Easting	Northing
12	16	428555	4751960
	Zone	Easting	Northing

**Verbal Boundary Description**

The historic boundary surrounding the 2.75-mile Oak Creek Parkway is an irregular polygon that is shown on the attached historic boundary maps. The boundary follows the course of Oak Creek from the intersection of Hawthorne Avenue and Oak Creek Parkway Drive at Grant Park, where the Drive begins, northwest and then south to its termination point at Rawson Avenue. The historic boundary includes Oak Creek, the Drive, and park space along the creek corridor. The small portion of Oak Creek between the Drive and Lake Michigan that is not adjacent to the Drive and county-owned Parkway parcels is omitted from the boundary.

Between 9<sup>th</sup> Avenue and 5<sup>th</sup> Avenue a portion of the former railroad right-of-way is currently owned by Grant Park Commons, LLC. Although the southeast corner of the Warming House building extends into this right-of-way, the structure has always been associated with the parkway. Therefore,

**United States Department of the Interior**  
**National Park Service**

**National Register of Historic Places**  
**Continuation Sheet**

Section 10 Page 2

Oak Creek Parkway  
South Milwaukee, Milwaukee County, Wisconsin

---

the historic boundary was delineated to include the entire building. In this area, the railroad right-of-way and 45' contour line were used to delineate the historic boundary. The 45' contour line allows for the entire Warming House building to be included in the historic boundary.

**Boundary Justification:**

The historic boundary was defined to include property historically associated with the Oak Creek Parkway and property owned by Milwaukee County. With the exception of the area immediately south of the Mill Pond Warming House, the limits of county-owned parcels and the back edge of pavement along the Parkway Drive were used to define the historic boundary. Although Oak Creek continues south of Rawson Avenue and County-owned parcels are located along the creek, this land was acquired in more recent years and does not reflect the original parkway design intent. Therefore, Rawson Avenue forms the southern boundary.

Grant Park and the associated Golf Course and Pitch 'n' Putt course along Hawthorne Avenue are not included within the Parkway boundary as they are distinct entities within the Milwaukee County Parkway System and merit National Register eligibility independently from the Parkway.

Oak Creek Parkway  
Name of Property

Milwaukee County  
County and State

Wisconsin

### Additional Documentation

Submit the following items with the completed form:

#### Continuation Sheets

**Maps** A USGS map (7.5 or 15 minute series) indicating the property's location.  
A sketch map for historic districts and properties having large acreage or numerous resources.

**Photographs** Representative black and white photographs of the property.

**Additional Items** (Check with the SHPO or FPO for any additional items)

### Property Owner

Complete this item at the request of SHPO or FPO.)

name/title

organization

date

street&number

telephone

city or town

state WI

zip code

name/title

organization

date

street&number

telephone

city or town

state WI

zip code

name/title

organization

date

street&number

telephone

city or town

state

zip code

**Paperwork Reduction Act Statement:** This information is being collected for applications to the National Register of Historic Places to nominate properties for listing or determine eligibility for listing, to list properties, and to amend existing listings. Response to this request is required to obtain a benefit in accordance with the National Historic Preservation Act, as amended (16 U.S.C. 470 *et seq.*).

**Estimated Burden Statement:** Public reporting burden for this form is estimated to average 18.1 hours per response including time for reviewing instructions, gathering and maintaining data, and completing and reviewing the form. Direct comments regarding this burden estimate or any aspect of this form to the Chief, Administrative Services Division, National Park Service, P.O. Box 37127, Washington, DC 20013-7127; and the Office of Management and Budget, Paperwork Reduction Projects, (1024-0018), Washington, DC 20503.



**United States Department of the Interior  
National Park Service**

**National Register of Historic Places  
Continuation Sheet**

Section Photos Page 1

Oak Creek Parkway  
South Milwaukee, Milwaukee County, Wisconsin

---

***Oak Creek Parkway***

***City of South Milwaukee***

***Milwaukee County, Wisconsin, 53172***

***Photographer: Mead & Hunt, Inc., June 2007***

***Negatives in the collection of the Wisconsin Historical Society***

***Photograph 1 of 24***

Street light and sign - intersection of Grant Park and Hawthorne Avenue  
View looking east

***Photograph 2 of 24***

Parkway Drive with retaining wall  
View looking west

***Photograph 3 of 24***

Bridge at western end of Oak Creek Parkway Drive – southwest elevation  
View looking northwest

***Photograph 4 of 24***

Maintenance building – north and west elevations  
View looking southeast

***Photograph 5 of 24***

Stone stairway through retaining wall  
View looking north

***Photograph 6 of 24***

Stone bench within retaining wall  
View looking north

***Photograph 7 of 24***

Bridge P-40-740 – southwest elevation  
View looking northeast

***Photograph 8 of 24***

Retaining wall  
View looking south

**United States Department of the Interior**  
**National Park Service**

**National Register of Historic Places**  
**Continuation Sheet**

Section Photos Page 2 Oak Creek Parkway  
South Milwaukee, Milwaukee County, Wisconsin

---

*Photograph 9 of 24*  
Bridge P-40-936 – east elevation  
View looking west

*Photograph 10 of 24*  
Warming house  
View looking southwest

*Photograph 11 of 24*  
Mill pond with Parkway Drive  
View looking west

*Photograph 12 of 24*  
Bridge B-40-0174 – north elevation  
View looking southeast

*Photograph 13 of 24*  
Bridge immediately east of STH 32 – southwest elevation  
View looking west

*Photograph 14 of 24*  
Bridge B-40-0521-81 – southeast elevation  
View looking northeast

*Photograph 15 of 24*  
Parkway Drive between STH 32 and 15<sup>th</sup> Avenue  
View looking west

*Photograph 16 of 24*  
Bridge between STH 32 and the railroad – southwest elevation  
View looking northwest

*Photograph 17 of 24*  
Pedestrian bridge – west elevation  
View looking northeast

**United States Department of the Interior**  
National Park Service

**National Register of Historic Places**  
**Continuation Sheet**

Section Photos Page 3

Oak Creek Parkway  
South Milwaukee, Milwaukee County, Wisconsin

---

*Photograph 18 of 24*

Railroad bridge – west elevation

View looking northwest

*Photograph 19 of 24*

Bridge B-40-0672 – east elevation

View looking northwest

*Photograph 20 of 24*

Playground – north of Oak Creek Parkway Drive and west of 15<sup>th</sup> Avenue

View looking west

*Photograph 21 of 24*

Ball field/tennis courts – west of 15<sup>th</sup> Avenue

View looking east

*Photograph 22 of 24*

Pedestrian bridge – across the Drive opposite Beech Street

View looking west

*Photograph 23 of 24*

Utility Shed – across Oak Creek opposite the baseball diamond

View looking southeast

*Photograph 24 of 24*

Parkway Drive with utility shed

View looking north





















**Oak Creek Parkway**

*Milwaukee Co., WI*

0 65 130 260 390 520 Feet

1 inch equals 300 feet

SHEET 3 OF 3

Historic Boundary

Contributing

Non-Contributing

UTM Point Location



(3-11" x 17" maps of Parkway)



UNITED STATES DEPARTMENT OF THE INTERIOR  
NATIONAL PARK SERVICE

NATIONAL REGISTER OF HISTORIC PLACES  
EVALUATION/RETURN SHEET

REQUESTED ACTION: NOMINATION

PROPERTY Oak Creek Parkway  
NAME:

MULTIPLE Milwaukee County Parkway System  
NAME:

STATE & COUNTY: WISCONSIN, Milwaukee

DATE RECEIVED: 5/20/11 DATE OF PENDING LIST: 6/10/11  
DATE OF 16TH DAY: 6/27/11 DATE OF 45TH DAY: 7/05/11  
DATE OF WEEKLY LIST:

REFERENCE NUMBER: 11000416

REASONS FOR REVIEW:

APPEAL: N DATA PROBLEM: N LANDSCAPE: N LESS THAN 50 YEARS: N  
OTHER: N PDIL: N PERIOD: N PROGRAM UNAPPROVED: N  
REQUEST: N SAMPLE: N SLR DRAFT: N NATIONAL: N

COMMENT WAIVER: N

☒ ACCEPT ☐ RETURN ☐ REJECT 6-27-11 DATE

ABSTRACT/SUMMARY COMMENTS:

Entered in  
The National Register  
of  
Historic Places

RECOM./CRITERIA \_\_\_\_\_

REVIEWER \_\_\_\_\_ DISCIPLINE \_\_\_\_\_

TELEPHONE \_\_\_\_\_ DATE \_\_\_\_\_

DOCUMENTATION see attached comments Y/N see attached SLR Y/N

If a nomination is returned to the nominating authority, the nomination is no longer under consideration by the NPS.



OAK CREEK  
PARKWAY

MILWAUKEE  
COUNTY PARK  
SYSTEM

Oak Creek Parkway

Milwaukee County, Wisconsin

Mead & Hunt

May 2008

Negatives in the collection of the Wisconsin Historical Society  
Street light and sign - intersection of Grant Park & Hawthorne Ave  
View looking east

Photo 1 of 24



Oak Creek Parkway  
Milwaukee County, Wisconsin

Mead & Hunt

May, 2008

Negatives at Wisconsin Historical Society

Parkway Drive with retaining wall  
view facing west

Photo 2 of 24





Oak Creek Parkway

Milwaukee County, Wisconsin

Mead & Hunt

May 2008

Negatives at Wisconsin Historical Society

Bridge - side elevation

view facing northwest

Photo 3 of 24



Oak Creek Parkway

Milwaukee County, Wisconsin

Mead & Hunt

May 2008

Negatives at the Wisconsin Historical Society

Maintenance Building - North and West elevations

View looking southeast

Photo 4 of 24





Oak Creek Parkway  
Milwaukee County, Wisconsin  
Mead & Hunt

May 2008

Negatives at the Wisconsin Historical Society

Stone stairway through retaining wall

View facing north

photo 5 of 24



Oak Creek Parkway  
Milwaukee County, Wisconsin  
Mead & Hunt  
May 2008

Negatives at the Wisconsin Historical Society  
Stone bench within retaining wall  
View facing north  
Photo 6 of 24



Oak Creek Parkway  
Milwaukee County, WI  
Mead & Hunt

May 2008  
Negatives in the Wisconsin Historical Society

Bridge-side (south) elevation  
View facing north

Photo 1 of 24





Oak Creek Parkway  
Milwaukee County, WI  
Mead & Hunt

May 2008

Negatives at Wisconsin Historical Society

Retaining wall

View looking South

photo 8 of 24



Oak Creek Parkway  
Milwaukee County, WI  
Mead & Hunt

May 2008

Negatives at Wisconsin Historical Society

Bridge - side (east) elevation

view facing west

photo 9 of 24



Oak Creek Parkway  
Milwaukee County, WI  
Mead & Hunt

May 2008

Negatives at Wisconsin Historical Society

Warming House

View facing south west

photo 10 of 24





Oak Creek Parkway  
Milwaukee County, WI  
Mead & Hunt

May 2008

Negatives at Wisconsin Historical Society

Lagoon and Parkway Drive

View looking west

Photo 11 of 24



Oak Creek Parkway  
Milwaukee County, WI  
Mead & Hunt

May 2008

Negatives at the Wisconsin Historical Society

Bridge B-40-0174

view facing SE

photo 12 of 24



Oak Creek Parkway  
Milwaukee County, WI  
Mead & Hunt

May 2008

Negatives at Wisconsin Historical Society

Bridge - side (south) elevation

View facing west

photo 13 of 24





Oak Creek Parkway  
Milwaukee County, WI  
Mead & Hunt

May 2008

Negatives at the Wisconsin Historical Society

Bridge B-40-0521-81

view facing NE

Photo 14 of 24



Oak Creek Parkway  
Milwaukee County, WI  
Mead & Hunt

May 2008

Negatives at Wisconsin Historical Society

Parkway Drive between Chicago & 16th Avenue.  
view facing west

photo 15 of 24



Oak Creek Parkway  
Milwaukee County, WI  
Mead & Hunt

May 2008

Negatives at Wisconsin Historical Society  
Bridge

View facing west  
Photo 16 of 24





OAK CREEK PARKWAY  
MILWAUKEE COUNTY, WI  
MEAD & HUNT

MAY 2008

NEGATIVES AT WISCONSIN HISTORICAL SOCIETY

PEDESTRIAN BRIDGE - SIDE (WEST) ELEVATION  
VIEW LOOKING EAST

PHOTO 17 OF 24



OAK CREEK PARKWAY

MILWAUKEE COUNTY, WI

MEAD & HUNT

MAY 2008

NEGATIVES AT WISCONSIN HISTORICAL SOCIETY

RAILROAD BRIDGE - SIDE (WEST) ELEVATION

VIEW FACING EAST

PHOTO 18 OF 24



Oak Creek Parkway  
Milwaukee County, WI  
Mead & Hunt

May 2008

Negatives at the Wisconsin Historical Society

Bridge B-40-0672

View facing NW

photo 19 of 24





Oak Creek Parkway  
Milwaukee County, WI  
Mead & Hunt

May 2008

Negatives at the Wisconsin Historical Society

Playground north of Oak Creek Pkwy Drive and west of 15th Ave  
View facing west

Photo 20 of 24



Oak Creek Parkway  
milwaukee County, WI

Mead & Hunt

May 2008

Negatives at the Wisconsin Historical Society  
ball field & tennis courts west of 15th Ave  
View facing east

Photo 21 of 24



OAK CREEK PARKWAY

MILWAUKEE COUNTY, WI

MEAD & HUNT

MAY 2008

NEGATIVES AT WISCONSIN HISTORICAL SOCIETY

PEDESTRIAN BRIDGE -

VIEW FACING WEST

PHOTO 22 OF 24



Oak Creek Parkway  
Milwaukee County, WI  
Mead & Hunt  
May 2008

Negatives at Wisconsin Historical Society  
Utility building  
View facing southeast  
photo 23 of 24





OAK CREEK PARKWAY  
MILWAUKEE COUNTY, WI

MEAD & HUNT

MAY 2008

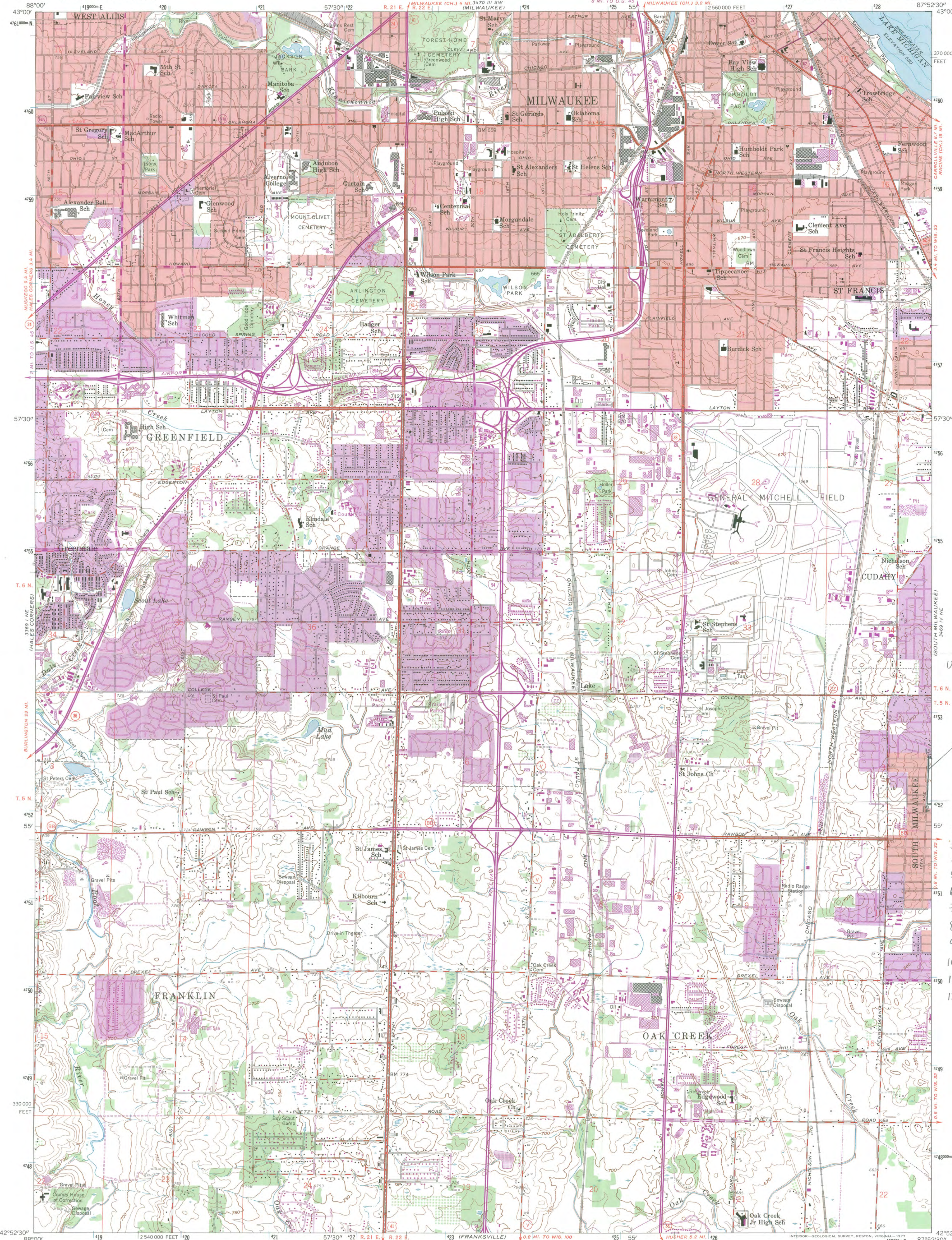
NEGATIVES AT THE WISCONSIN HISTORICAL SOCIETY

PARKWAY DRIVE AND UTILITY SHED

VIEW LOOKING NORTH

PHOTO 24 of 24





USGS Map #1 of 2

Oak Creek Parkway  
South Milwaukee,  
Milwaukee County, WI  
UTM References

Zone 16

1. 428570 4752495
2. 428800 4752845
3. 429635 4752560
4. 431135 4750752
5. 431144 4750738
6. 430590 4750910
7. 429835 4751560
8. 429185 4752415
9. 428880 4752250
10. 428758 4751578
11. 428644 4751581
12. 428555 4751960

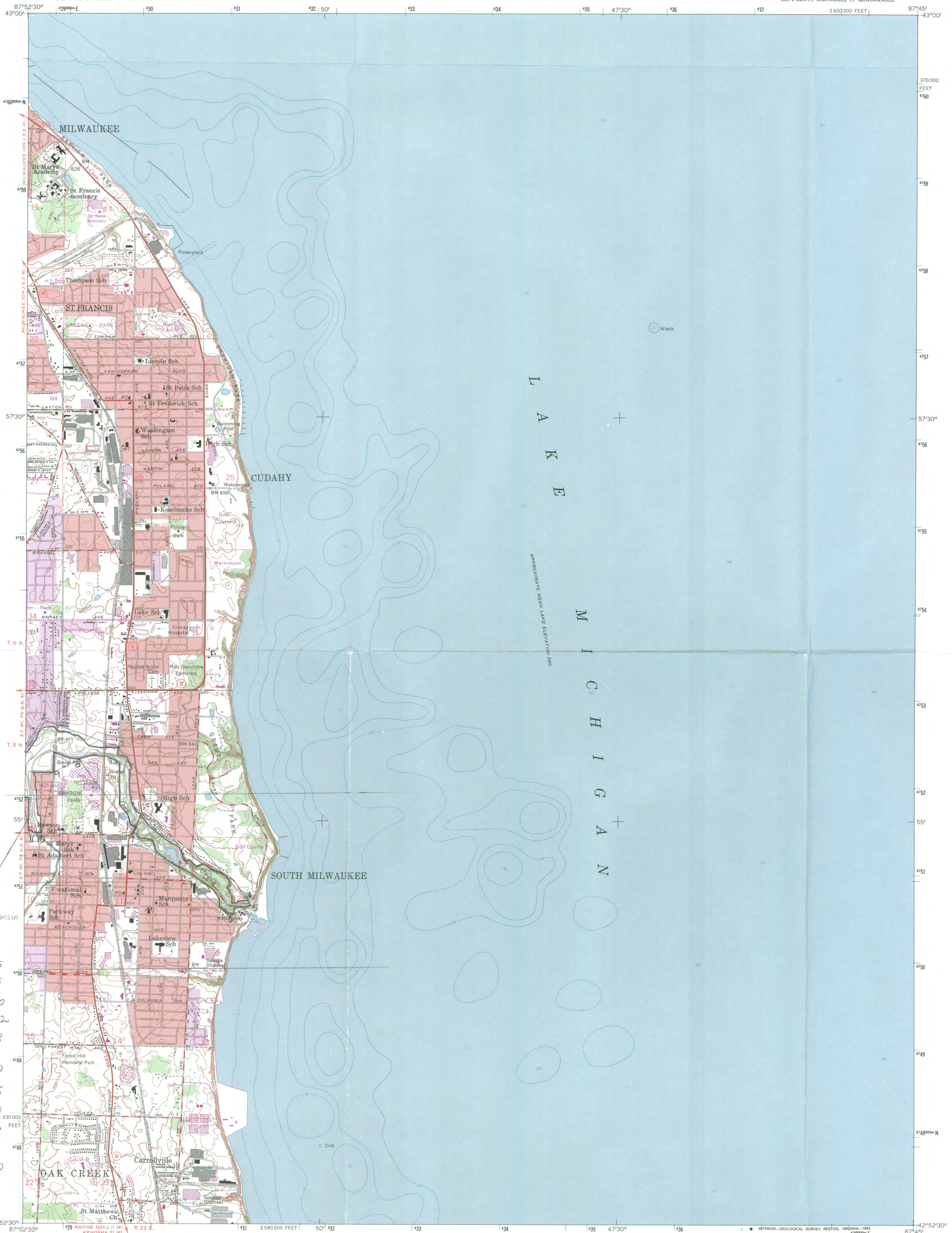
Mapped, edited, and published by the Geological Survey  
Control by USGS, USCGS, and City of Milwaukee  
Topography from aerial photographs by photogrammetric methods  
Aerial photographs taken 1955. Field check 1958  
Hydrography compiled from U. S. Lake Survey chart 743 (1957)  
Polyconic projection. 1927 North American datum  
10,000-foot grid based on Wisconsin coordinate system, south zone  
1000-meter Universal Transverse Mercator grid ticks,  
zone 16, shown in blue  
Red tint indicates areas in which only landmark buildings are shown  
Revisions shown in purple compiled from aerial photographs  
taken 1971 and 1976. This information not field checked  
Purple tint indicates extension of urban areas

SCALE 1:24,000  
CONTOUR INTERVAL 10 FEET  
NATIONAL GEODETIC VERTICAL DATUM OF 1929  
DEPTH CURVES AND SOUNDINGS IN FEET—DATUM IS 578 FEET  
THIS MAP COMPLIES WITH NATIONAL MAP ACCURACY STANDARDS  
FOR SALE BY U. S. GEOLOGICAL SURVEY, RESTON, VIRGINIA 22092  
AND WISCONSIN GEOLOGICAL AND NATURAL HISTORY SURVEY, MADISON, WISCONSIN 53706  
A FOLDER DESCRIBING TOPOGRAPHIC MAPS AND SYMBOLS IS AVAILABLE ON REQUEST

ROAD CLASSIFICATION  
Primary highway, hard surface  
Secondary highway, hard surface  
Unimproved road  
Light-duty road, hard or improved surface  
U. S. Route  
State Route  
Interstate Route  
GREENDALE, WIS.  
NW 1/4 SOUTH MILWAUKEE 15' QUADRANGLE  
N 4252.5—W 8752.5/7.5  
1958  
PHOTOREVISED 1971 AND 1976  
AMS 3469 IV NW—SERIES V861







USGS Map #2 of 2

Oak Creek Parkway  
South Milwaukee,  
Milwaukee County, Wisconsin  
UTM References

Zone 16  
1. 428570 4752495  
2. 428800 4752845  
3. 429635 4752560  
4. 431135 4750752  
5. 431144 4750738  
6. 430590 4750910  
7. 429835 4751560  
8. 429185 4752415  
9. 428880 4752250  
10. 428758 4751578  
11. 428644 4751581  
12. 428555 4751960

Produced by the U. S. Geological Survey

Control by USGS and NOS/NOAA

Topography by photogrammetric methods from aerial photographs  
taken 1955. Field checked 1958

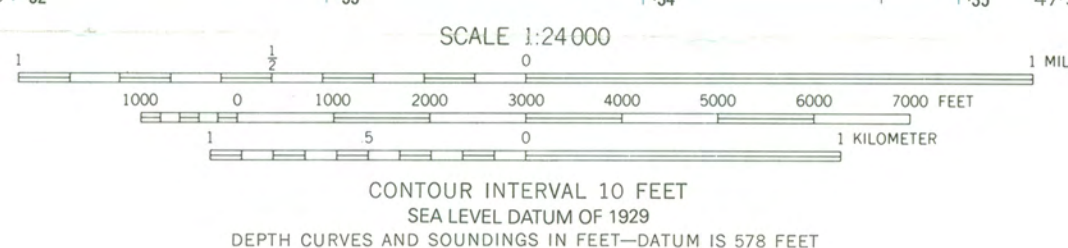
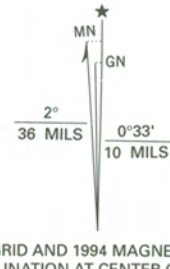
Hydrography compiled from U.S. Lake Survey chart 74 (1957)

Projection and 10,000-foot grid ticks: Wisconsin coordinate  
system, south zone (Lambert conformal conic)  
1000-meter Universal Transverse Mercator grid ticks, zone 16, shown in blue  
1927 North American Datum (NAD 27)

North American Datum of 1983 (NAD 83) is shown by dashed corner ticks  
The values of the shift between NAD 27 and NAD 83 for 7.5-minute  
intersections are given in USGS Bulletin 1875

Red tint indicates areas in which only landmark buildings are shown  
Photinspected from 1992 source; no major culture or drainage  
changes observed. Boundaries verified and names revised 1994

Revisions shown in purple compiled from aerial photographs  
taken 1971. This information not field checked  
Purple tint indicates extension of urban areas



QUADRANGLE LOCATION

ROAD CLASSIFICATION

Primary highway, hard surface. Light-duty road, hard or improved surface.  
Secondary highway, hard surface. Unimproved road.

Interstate Route. U. S. Route. State Route.

1	2	3	1 Milwaukee
4	5	6	2 Greendale
7	8	9	3 Racine North
10	11	12	4 Racine North

ADJOINING 7.5' QUADRANGLE NAMES

SOUTH MILWAUKEE, WIS.

NE/4 SOUTH MILWAUKEE 15' QUADRANGLE  
42087-H7-TF-024

1958  
PHOTOREVISED 1971  
MINOR REVISION 1994  
DMA 3469 IV NE—SERIES V861



RECEIVED

AUG 11 2010

OBJECTION TO LISTING IN  
THE  
NATIONAL REGISTER OF HISTORIC PLACES

DIV HIST PRES

Property Name: Grant Park Commons (Proposed)I am sole owner of the property - I am part owner of the property (circle one)Address of Property: Adjacent Oak Creek ParkwayCity: South Milwaukee County: Milwaukee

In accordance with Section 101 of the National Historic Preservation Act, as amended, and Title 36, Part 60.6, of the Code of Federal Regulations, I hereby certify that I am the sole/part (circle one) owner of the property listed above and do hereby object to its listing in the National Register of Historic Places. In accordance with said law and regulations, I understand that my property will not be listed in the National Register, providing that I sign and have notarized this statement, and that I submit it to the Wisconsin State Historic Preservation Officer prior to the meeting of the State Historic Preservation Review Board during which the nomination of my property will be considered.

Signed: Richard J. SchumacherDate: 8-3-2010Print or Type Name: RICHARD SCHUMACHERMailing Address: 730 ST. SYLVESTER DR.City: So. MILW. State: WI Zip: 53172

## NOTARY

State of Wisconsin, County of MilwaukeeThe above statement was subscribed and sworn before me this 3rd day ofAugust, 2010Brian C. Sajdak  
Notary Public SignatureMy commission Expires: is permanent

