



Maryland News

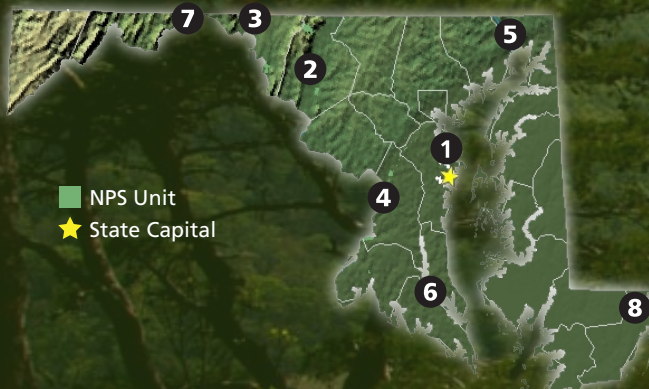


Photo: C-Kat Studios

PROJECTS AND PARTNERS 2012

CURRENT PROJECTS

- 1. Bacon Ridge Natural Area Master Plan**
Anne Arundel County Dept of Recreation and Parks and Scenic Rivers Land Trust
- 2. Catoclin Land Trust Strategic Plan**
Catoclin Land Trust
- 3. Canal Towns Heritage Tourism**
Canal Town Partnership, C&O Canal Trust, C&O Canal National Historical Park
- 4. Forest Heights Elementary School - Park Connection**
Forest Heights Elementary School and Oxon Cove National Park
- 5. Lower Susquehanna Trails Strategic Action Plan**
Lower Susquehanna Heritage Greenway
- 6. Patuxent Tidewater Conservation Plan**
Patuxent Tidewater Land Trust
- 7. September 11th National Memorial Trail**
September 11th National Memorial Trail Alliance
- 8. Walkable Bikeable Berlin**
Lower Shore Land Trust, Town of Berlin, Grow Berlin Green, and Assateague Island National Seashore

Find out more about each project starting on page 2.

Recent Successes

Strategic Conservation in Maryland

In today's climate of competing demands, balancing economic growth with natural resource stewardship is increasingly difficult. As a key player in preserving natural and working lands, land trusts need to be very strategic in defining conservation priorities. A conservation plan creates a framework for sound decisions, engenders public trust, and inspires informed action. Teaming with Defenders of Wildlife, Maryland Environmental Trust, University of Maryland Environmental Finance Center, and West Virginia University and supported by National Fish and Wildlife Foundation and Biophilia Foundation funds, RTCA has worked with several land trusts in Maryland to prepare and implement strategic conservation plans.

Catoclin Land Trust operating in Frederick County completed a series of workshops culminating in maps of priority lands to

continued on page 4

ABOUT US The Rivers, Trails, and Conservation Assistance (RTCA) Program is the community assistance arm of the National Park Service. RTCA staff provides technical assistance to community groups and local, state, and federal government agencies working to protect natural areas and water resources and enhance close-to-home outdoor recreation opportunities. We help communities plan, organize partnerships, and achieve on-the-ground success on projects they initiate.

Current Projects



Important views like this one along the Appalachian Trail are among those priority areas identified for protection by partners such as the Catoctin Land Trust. Photo: C-Kat Studios.

1. Bacon Ridge Natural Area Master Plan

Project Partners: Anne Arundel County Dept of Recreation and Parks and Scenic Rivers Land Trust
RTCA Contact: Wink Hastings
Location: Crownsville, Maryland
Congressional Districts: MD - 1, 3

Project Goal

A resource management plan guiding public recreational use while protecting the area's important natural resources.

RTCA Role

Guide a collaborative planning process among diverse partners to develop a resource management plan balancing public recreation use and natural resource protection.

2. Catoctin Land Trust Strategic Plan

Project Partner: Catoctin Land Trust
RTCA Contact: Wink Hastings
Location: Frederick County, Maryland
Congressional Districts: MD - 6, 7, 8

Project Goal

Complete a strategic plan to strengthen Land Trust capacity for implementing its recently completed conservation plan and in seeking Land Trust Alliance accreditation.

RTCA Role

Facilitate strategic planning process and organizational capacity building efforts.

3. Canal Towns Heritage Tourism

Project Partners: Canal Town Partnership, C&O Canal Trust, C&O Canal National Historical Park
RTCA Contact: Beth Porter
Location: Communities along the C&O Canal National Historical Park, including Hancock, MD; Sharpsburg, MD; Cumberland, MD; Williamsport, MD; Point of Rocks, MD; Brunswick, MD; Shepherdstown, WV; Harpers Ferry, WV
Congressional Districts: MD - 6, PA - 18, WV - 2

Project Goal

For the 184-mile long C&O Canal and its historic Canal Towns to serve as a nationally recognized and promoted network that links park users with the scenic, historic, and recreational resources of the canal and the high quality visitor services of the towns.

RTCA Role

Provide organizing, planning, and technical assistance to the Canal Towns and their partners as they build an independent, high-functioning organization that promotes heritage tourism programs and activities in relation to the C&O Canal and towpath.

4. Forest Heights Elementary School - Park Connection

Project Partners: Forest Heights Elementary School and Oxon Cove National Park
RTCA Contact: Beth Porter
Location: Forest Heights, Maryland
Congressional District: MD - 4

Project Goal

Build an ongoing partnership between Forest Heights Elementary School and Oxon Cove National Park that will result in an appreciation the natural, historical, and recreational resources within the park and its surrounding environs.

Current Projects cont.



Patuxent Tidewater Land Trust Executive Director Susan D. Charkes received the “support” of Defenders of Wildlife, Maryland Environmental Trust, West Virginia University (not pictured), and RTCA.

RTCA Role

Continue to develop the partnership between Oxon Cove National Park & Forest Heights Elementary that will build physical and programmatic connections between the park and neighborhood.

5. Lower Susquehanna Trails Strategic Action Plan

Project Partner: Lower Susquehanna Heritage Greenway
RTCA Contact: Wink Hastings
Location: Harford and Cecil counties, Maryland
Congressional Districts: MD - 1, 2, 6

Project Goal

Complete trails network throughout the Heritage Greenway; develop trails with the Star-Spangled Banner, Captain John Smith Chesapeake, and Washington-Rochambeau Revolutionary Route National Historic Trails.

RTCA Role

Facilitate the trail action planning process, leverage technical and financial assistance, and guide community building efforts.

6. Patuxent Tidewater Conservation Plan

Project Partner: Patuxent Tidewater Land Trust
RTCA Contact: Wink Hastings
Location: Anne Arundel, Calvert, Charles, Prince George’s and St. Mary’s counties, Maryland
Congressional District: MD - 3, 4, 5

Project Goal

A regional landscape conservation plan for Southern Maryland guiding land conservation efforts of the Patuxent Tidewater Land Trust and encouraging collaborative initiatives with local public and private partners.

RTCA Role

Guide the process to delineate lands important for natural resource value protection, facilitate preparation of a strategic conservation action plan, and leverage financial and technical support.

7. September 11th National Memorial Trail

Project Partner: September 11th National Memorial Trail Alliance
RTCA Contact: Peggy Pings
Location: Seven state triangle including Shanksville, PA (Flight 93 crash site), New York City (World Trade Center), and Washington, D.C. (Pentagon)
Congressional Districts: MD - 1, 2, 3, 4, 5, 6, 8

Project Goal

A 1,100-mile hiking, biking, and driving trail physically connecting the three national memorials commemorating the tragic events that occurred in 2001.

RTCA Role

Facilitate determination of trail route through Maryland and assist in the development of an interim Strategic Plan to improve organizational capacity and ensure quality trail management.

8. Walkable Bikeable Berlin

Project Partners: Lower Shore Land Trust, Town of Berlin, Grow Berlin Green, Assateague Island National Seashore
RTCA Contact: Wink Hastings
Location: Town of Berlin and Worcester County, Maryland
Congressional District: MD - 1

Project Goal

Prepare a regional trail plan to guide development of a trails network and identify opportunities for land conservation and trail development. Trails will connect community institutions, natural areas, and neighboring parks, including a trail that links Berlin to Assateague Island National Seashore.

RTCA Role

Facilitate development of collaborative partnerships, community-based support, and organizational capacity.

“Our collaboration with the RTCA program working with land trusts in Maryland has been highly effective. Our joint efforts have increased the capacity and technical abilities of the land trusts to focus on conserving the highest priority lands within their service areas.”

-Judy Boshoven, Living Land Manager,
Defenders of Wildlife

We're Here For You.

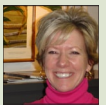
Could your project benefit from RTCA Staff Assistance? Contact us to find out.



Wink Hastings
410.260.2481
WHastings@chesapeakebay.net



Peggy Pings
304.293.7528
peggy_pings@nps.gov



Beth Porter
202.690.5169
beth_porter@nps.gov

2011 Nationwide Partnership Success

1,991	Miles of Trail Developed
1,925	Miles of River Conserved
33,230	Acres of Open Space and Parkland Protected
94%	Percentage of Community Partners Satisfied

Find more information online at
www.nps.gov/rtca



EXPERIENCE YOUR AMERICA™

Recent Successes cont.

preserve based on organizational mission and guided by a future vision for the region. In addition to guiding the Land Trust, the completed plan will facilitate collaborative efforts with Frederick County as it develops a countywide green infrastructure plan.

In a five-county region of southern Maryland, the Board of Trustees for the Patuxent Tidewater Land Trust completed an intensive three-day workshop to prioritize lands for protection and to develop preliminary strategies for future regional conservation action. The Land Trust will use its conservation priorities to inform future collaborative initiatives with county planning offices, natural resource agencies, and other non-profit organizations.

In conjunction with its recently completed conservation plan, the Lower Shore Land Trust has partnered with National Audubon Society and Defenders of Wildlife to implement a climate change adaptation plan for endangered salt marsh birds. Through this collaborative effort, the Land Trust will preserve future habitat lands.

Cheverly Green Infrastructure Plan

Culminating 3 years of effort, the Mayor and Town Council of Cheverly, Maryland unanimously approved a green infrastructure plan to preserve a... "thriving, healthy environment for a sustainable community." Containing a number of actions, the plan establishes a natural areas network and details a number of recommendations to manage Cheverly's "natural capital" (i.e. soil, water, vegetation, and animal life), land use, and the built environment. Recognizing the spirit and pride of Cheverly residents, the plan encourages the development of "green ribbons," connecting backyards to the natural network through alleys and utility corridors. Aware of regional needs, the plan reflects Prince George's County Green Infrastructure Plan and Water Resources Functional Master Plan as well as the Chesapeake Bay Program's efforts to reduce storm water pollution. One of the initial actions is a collaborative effort of the Town and the National Park Service in restoring a former residential site adjacent to the Baltimore-Washington Parkway.



"Special thanks goes to the National Park Service (and Wink Hastings) for providing the leadership and resources required to bring our residents, businesses and government together to make this effort successful."

-Mike Callahan,
Mayor, Town of Cheverly

Funded by the Chesapeake Bay Trust, Cheverly residents installed storm drain markers acknowledging the Town's connection with the Anacostia River and Chesapeake Bay. Photo: C-Kat Studios.