



Greenleaf Villa
most size Charleston influence
early 1800s

KERSHAW COUNTY HISTORICAL SOCIETY
CAMDEN, S. C.

NPS Number 71-5-45-0017

Title: Greenleaf Camden ①

Historic District PHOTOGRAPHY BY

Loc. Kershaw Co., Robert Raymond

Greenleaf Villa CAMDEN, S. C.

Southwest view - side from

PROPERTY OF THE NATIONAL REGISTER

Camden

③



NPS Number 71-5-45-0017

Title: Camden - Historic

Old Anson County Court House

Loc. Kershaw Co., S.C. (2)

Full Mills Court House

Partial Southern Exposure

Photographer -

Frank Crenshaw
Cliff Studios

Camden, S.C.
PROPERTY OF THE NATIONAL REGISTER

has negative

Camden 10



Florence Price Home
owned by City of Camden
dates c. 1830
restored 1965

Camden Historical Commission
P. O. BOX 710
Camden, South Carolina 29020

NPS Number 71-5-45-0017

Title: Camden Historic

Photograph By

Loc. Distrial
Kenilworth Florence Price Home (c. 1830)

Price Full Western exposure (front)
K Partial Southern exposure

Photo. Monarch Studio - Camden, S.C.

Negative -
Monarch studio

6-20-69

PROPERTY OF THE NATIONAL REGISTER



Buckley House (c. 1854) and Gardens

Southern exposure

NPS Number 71-5-45-0017

Title: Camden Historic

District

Loc. Kershaw Co., S.C.

Kamschatka (Buckley

Photo - Therese

Frank Grenshaw

Cliff Studio

Camden,
S.C.

(4)

Neepative - Camden District Heritage Foundation

PROPERTY OF THE NATIONAL REGISTER



90

NPS Number 71-5-45-0017

Title: Candler Historic

District

Loc. Kenosha Co. S.O.

House Branch Hall

View (3) ~~_____~~

7 door Brown Hall

manila-type

1840s-

of

Front view
South wall

PROPERTY OF THE NATIONAL REGISTER



40970

"Sarsfield"
3-~~11~~ sec

NPS Number 71-5-45-0017

Title: Camden Westover

District

1873 - Loc. Kershaw Co., S.C. (6)

Sarsfield Sarsfield boykin Chesnut

Built by many boykin

(Henry J. Dixie)

mansion type -

68 %

front view - south

PROPERTY OF THE NATIONAL REGISTER

Camden 5



Presbyterian Church - Interior

NPS Number North Wall Exposure
71-5-45-0017

Title: Camden Historic

District

Loc. Keeshaw Co., S.C.

Photographer Bethesda Presbyterian
Church

Frank Canshaw

Cliff Studios
Camden,
S.C.

has negative

PROPERTY OF THE NATIONAL REGISTER

Camden

7



1214

I

Koumas House - C. 1843

Doorway showing original
fan and side lights -

Camden 4

NP&C Number 6482/5.0017 ^{Exposure}

Title: Camden Historic

District

Loc. Kershaw Co., S.C.

(8)

Koumas House

Photo -

Cliff Studio
Camden

Negative - Camden District Heritage Foundation

PROPERTY OF THE NATIONAL REGISTER



B
612 LAURENS-CAHILL (ALEXANDER) Cam X

VIEW E SIDE

NPS Number 71-5-46-0017

Title: Camden Historic

District

Loc. Berkeley Co., S.C.

Sandywood

ROSS E. BEARD, JR.
RICHARD T. DUNLAP

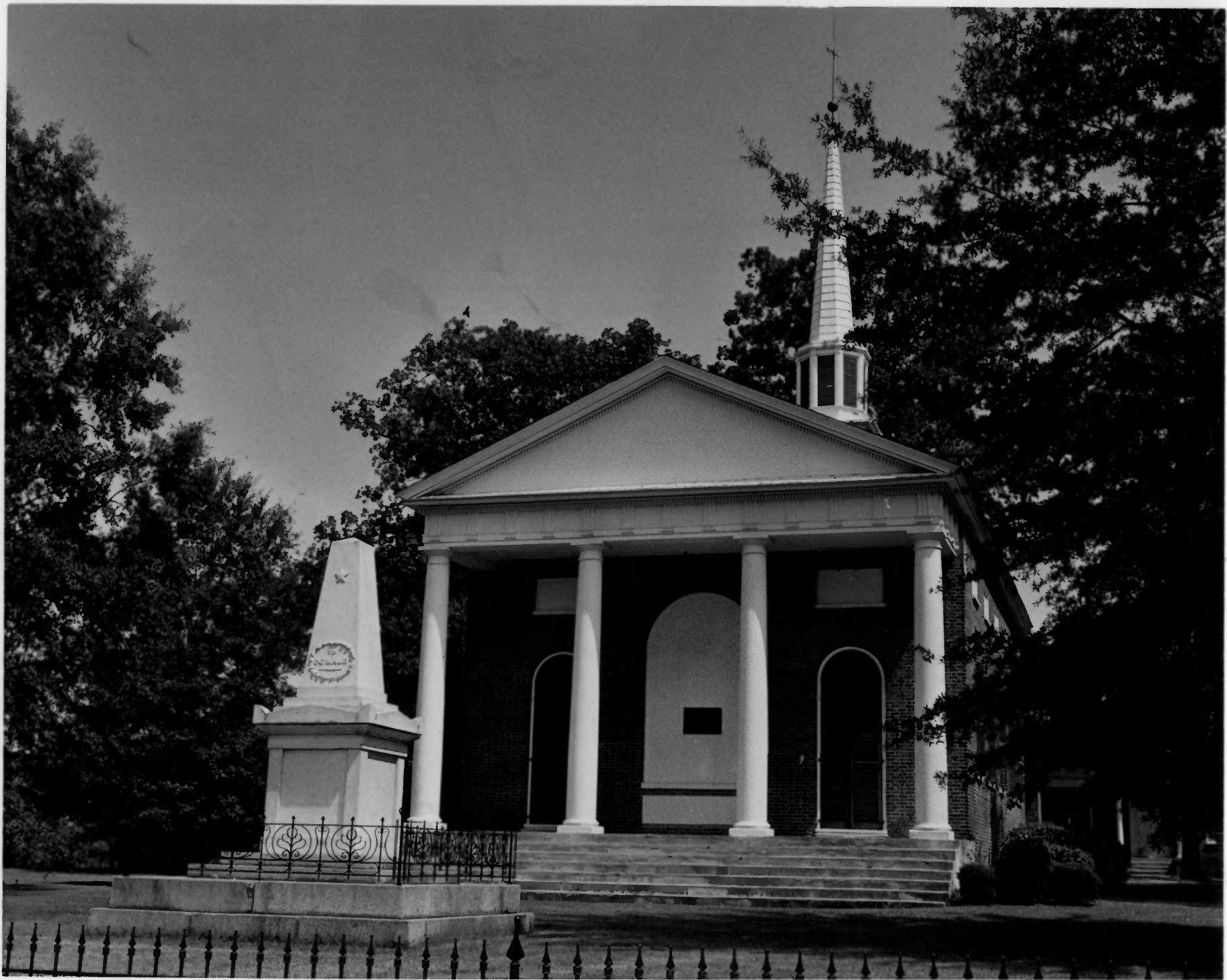
MAR 12 1961

Typical up counts
4 down } centre hall
2 up }

East wall side view
front face south

PROPERTY OF THE NATIONAL REGISTER

Camden



Bethesda Presbyterian Church -
c. 1822

62

Monument 1825 -

Robert Mills Architect
for both

Camden Historical Commission
P. O. BOX 710
Camden, South Carolina 29020

GREATER KERSHAW COUNTY
CHAMBER OF COMMERCE
P. O. Box 605
700 W. DeKalb St.
Camden, S. C. 29020

Presbyterian Church &
DeKalb Monument -
Southern Exposure

NPS Number 71-5-45-0017

Title: Camden Historic

District

Loc. Kershaw Co., S.C.

Bethesda Presbyterian Church

and DeKalb Monument

(10)
Bethesda Presbyterian Church (c.1822)

Camden

Trans
3 cal
for

PROPERTY OF THE NATIONAL REGISTER

Camden 3



Bolton

NPS Number 71-5-45-0017

Title: Camden Historic

District

Loc. Kershaw Co., S.C.

South Hill

(11)

South Hill c 1835
cottage type

Front view - house
faces southeast



121

Camden Historic District



21

Camden Historic District



#2747

121

Camden Historic District



2746

121

Camden Historic District



2745

121

Camden Historic District

Mills Courthouse



121 Camden Historic District



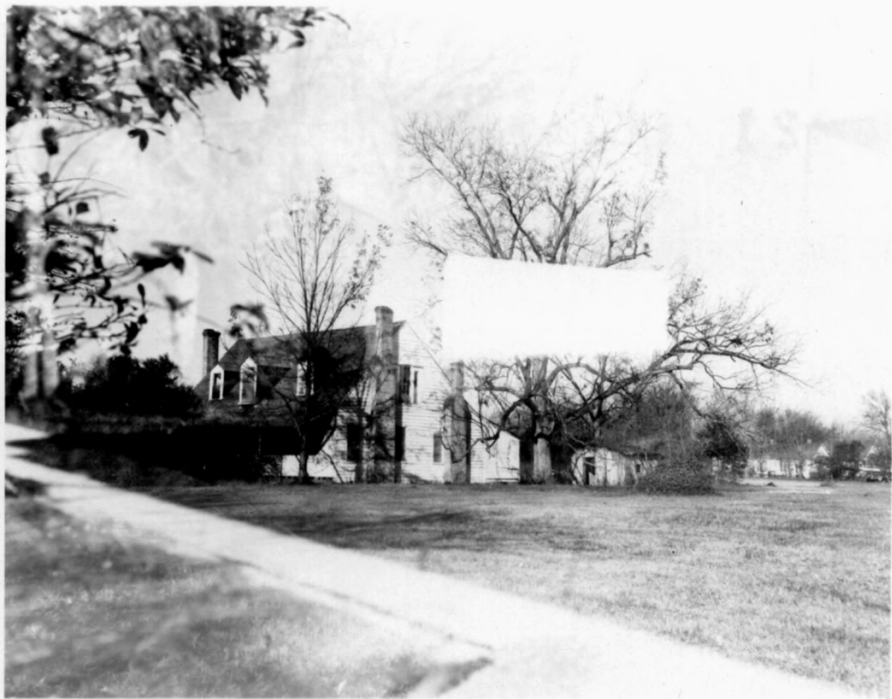
121

Camden Historic District



121

Camden Historic District



221 Camden Historic District



121 Camden Historic District



919

Camden Historic District

APR 1968

UNIVERSITY OF MARYLAND
COLLEGE PARK, MARYLAND