



UNITED STATES DEPARTMENT OF THE INTERIOR  
NATIONAL PARK SERVICE

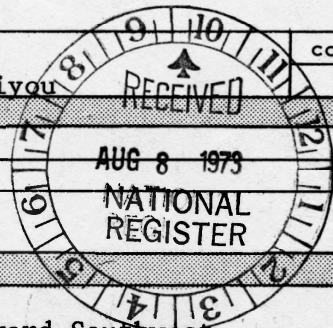
NATIONAL REGISTER OF HISTORIC PLACES  
PROPERTY PHOTOGRAPH FORM

(Type all entries - attach to or enclose with photograph)

STATE California	
COUNTY Siskiyou	
FOR NPS USE ONLY	
ENTRY NUMBER SEP 20 1973	DATE

SEE INSTRUCTIONS

<b>1. NAME</b>			
COMMON: Captain Jack's Stronghold			
AND/OR HISTORIC: Captain Jack's Stronghold			
<b>2. LOCATION</b>			
STREET AND NUMBER:			
CITY OR TOWN: Lava Beds National Monument			
STATE: California		CODE	COUNTY: Siskiyou
<b>3. PHOTO REFERENCE</b>			
PHOTO CREDIT: National Park Service			
DATE OF PHOTO: 1961			
NEGATIVE FILED AT: Lava Beds National Monument			
<b>4. IDENTIFICATION</b>			
DESCRIBE VIEW, DIRECTION, ETC. Aerial view of Capt. Jack's Stronghold looking toward Southwest.			







LAVA BEDS NATIONAL MONUMENT  
TULELAKE, CALIFORNIA

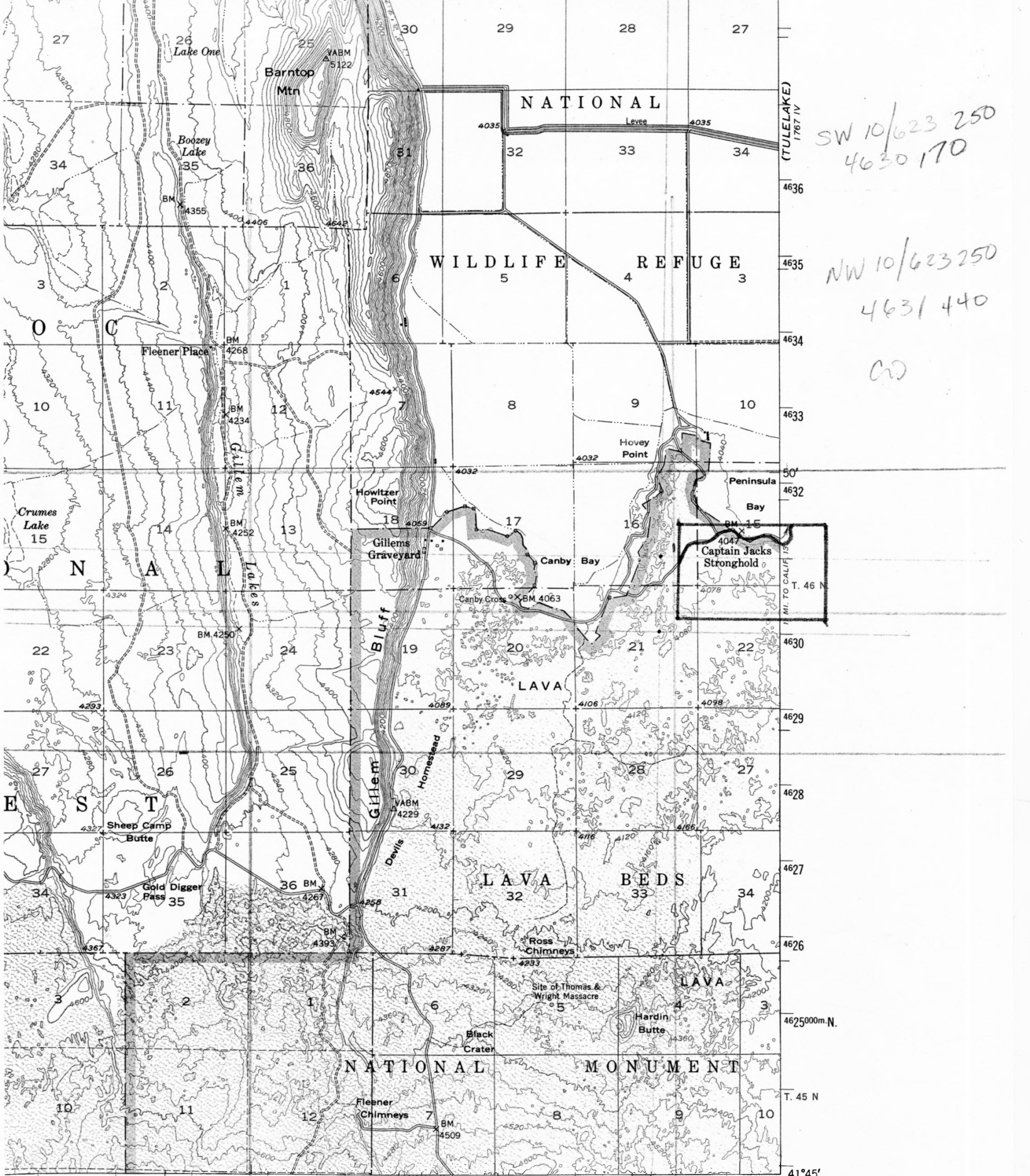
Neg. No. 61-1 e Print No. \_\_\_\_\_

Photographer \_\_\_\_\_ Date \_\_\_\_\_

Title: West line of defense by  
cattle corral, Cap't Jack's Stronghold

-----  
Please Return to the Superintendent  
Credit Line — National Park Service





SW 10/623 250  
4630 170

NW 10/623 250  
4631 440

CD

E. (MEDICINE LAKE) 1667 II 617 35' INDIAN WELL RANGER STATION 4.4 MI. INTERIOR—GEOLOGICAL SURVEY, WASHINGTON, D. C. 1965 41°45' 622000m.E. R: 4 E. 121°30'

2500

0 2 3 4 MILES

12000 15000 18000 21000 FEET

3 4 5 KILOMETERS

ROAD CLASSIFICATION

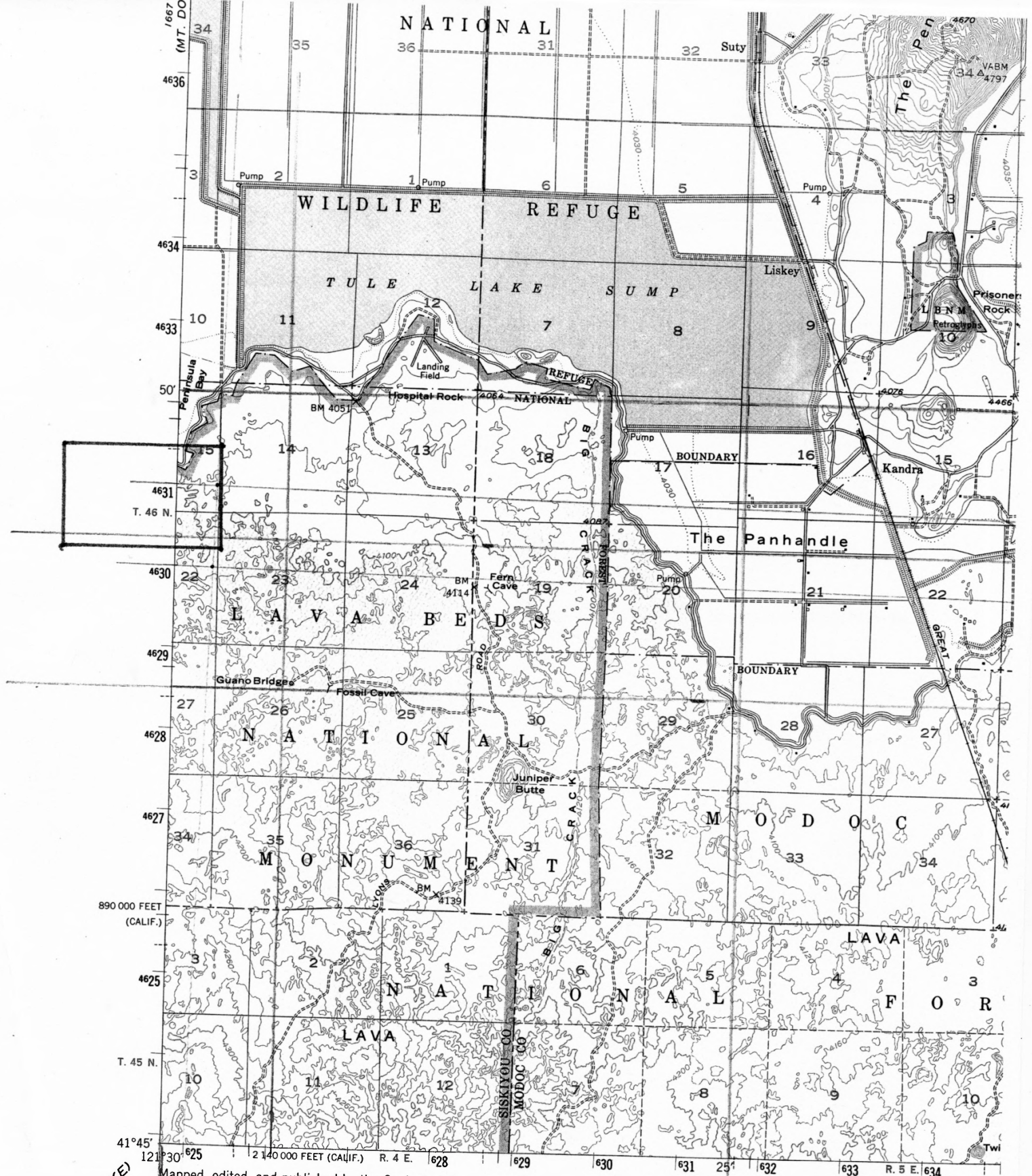
Heavy-duty 4 LANE (6 LANE) Light-duty

Medium-duty 4 LANE (6 LANE) Unimproved dirt

U. S. Route State Route

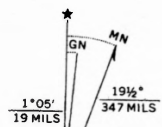
RECEIVED



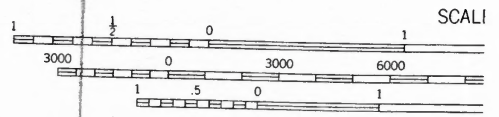


(MEDICINE LAKE)  
1867/11

Mapped, edited, and published by the Geological Survey  
Control by USGS and USC&GS  
Topography from aerial photographs by multiplex methods  
and by plane-table surveys 1951. Aerial photographs taken 1948  
Polyconic projection. 1927 North American datum  
10,000-foot grids based on California coordinate system,  
zone 1, and Oregon coordinate system, south zone  
Dashed land lines indicate approximate locations  
Unchecked elevations are shown in brown  
Brown pattern indicates lava flows  
in which contours are generalized  
1000-meter Universal Transverse Mercator grid ticks,  
zone 10, shown in blue



UTM GRID AND 1951 MAGNETIC NORTH  
DECLINATION AT CENTER OF SHEET



SCALI  
CONTOUR IN  
DOTTED LINES REPR  
DATUM IS A

THIS MAP COMPLIES WITH NAT  
FOR SALE BY U. S. GEOLOGICAL SURVEY, DENV  
A FOLDER DESCRIBING TOPOGRAPHIC M.