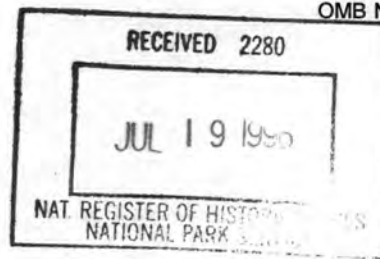


**United States Department of the Interior
National Park Service**

**National Register of Historic Places
Registration Form**



Waive
Comment
Period

This form is for use in nominating or requesting determinations for individual properties and districts. See instructions in How to Complete the National Register of Historic Places Registration Form (National Register Bulletin 16A). Complete each item by marking "x" in the appropriate box or by entering the information requested. If any item does not apply to the property being documented, enter "N/A" for "not applicable." For functions, architectural classification, materials, and areas of significance, enter only categories and subcategories from the instructions. Place additional entries and narrative items on continuation sheets (NPS Form 10-900a). Use a typewriter, word processor, or computer, to complete all items.

1. Name of Property

historic name Congregational Church of West Stockbridge

other names/site number West Stockbridge Congregational Church

2. Location

street & number 45 Main Street N/A not for publication

city or town West Stockbridge N/A vicinity

state Massachusetts code MA county Berkshire code 003 zip code 01266

3. State/Federal Agency Certification

As the designated authority under the National Historic Preservation Act of 1986, as amended, I hereby certify that this nomination request for determination of eligibility meets the documentation standards for registering properties in the National Register of Historic Places and meets the procedural and professional requirements set forth in 36 CFR Part 60. In my opinion, the property meets does not meet the National Register Criteria. I recommend that this property be considered significant nationally statewide locally. (See continuation sheet for additional comments.)

Judith B. McDonough
Signature of certifying official/Title

7/18/96
Date

State or Federal agency and bureau

In my opinion, the property meets does not meet the National Register criteria. (See continuation sheet for additional Comments.)

Signature of certifying official/Title

Date

State or Federal agency and bureau

4. National Park Service Certification

I, hereby certify that this property is:

- entered in the National Register
 - See continuation sheet.
- determined eligible for the National Register
 - See continuation sheet.
- determined not eligible for the National Register
- removed from the National Register
- other (explain): _____

Signature of the Keeper

Date of Action

Edson R. Beall

7-30-96

Entered in the
National Register

Congregational Church of West Stockbridge
Name of Property

Berkshire County, Massachusetts
County and State

5. Classification

Ownership of Property

(Check as many boxes as apply)

- private
- public-local
- public-State
- public-Federal

Category of Property

(Check only one box)

- building(s)
- district
- site
- structure
- object

Number of Resources within Property

(Do not include previously listed resources in the count.)

Contributing	Noncontributing	
<u>1</u>		buildings
		sites
		structures
		objects
<u>1</u>		Total

Name of related multiple property listing

(Enter "N/A" if property is not part of a multiple property listing.)

N/A

Number of contributing resources previously listed in the National Register

0

6. Function or Use

Historic Functions

(Enter categories from instructions)

RELIGION / religious facility

Current Functions

(Enter categories from instructions)

RELIGION / religious facility

7. Description

Architectural Classification

(Enter categories from instructions)

LATE VICTORIAN / Stick/Eastlake

Materials

(Enter categories from instructions)

foundation STONE / marble

walls WOOD / weatherboard, shingle

roof ASPHALT

other _____

Narrative Description

(Describe the historic and current condition of the property on one or more continuation sheets.)

See attached.

United States Department of the Interior
National Park Service

National Register of Historic Places Continuation Sheet

Congregational Church of West Stockbridge
West Stockbridge (Berkshire County) Massachusetts

Section number 7 Page 1

7. DESCRIPTION

The Congregational Church of West Stockbridge is located on the east side of Main Street (Route 102) in the village of West Stockbridge in Berkshire County, Massachusetts. Main Street, which runs north/south, is the commercial and institutional spine of the village. Just behind the buildings on the west side of Main Street, running parallel to the street, is the Williams River, which can be glimpsed from the low hill on which the church stands. The Congregational Church is located at the village's southern edge, where Main Street terminates at a fork in the road. The western spur of the fork, known as Old Great Barrington Road, leads south toward Interchange 2 on the Massachusetts Turnpike and, south of the turnpike, toward the town of Great Barrington; the eastern spur is the continuation of Route 102 and leads in a southeasterly direction toward the town of Stockbridge, Massachusetts. Extending east from the southern terminus of Main Street (where the road forks) is a village road known as South Street. The area immediately surrounding the Congregational Church of West Stockbridge is primarily residential in character. Most of the nearby buildings, like many buildings throughout the village, date to the second and third quarters of the nineteenth century.

The church occupies a 0.35-acre L-shaped parcel with frontage on both Main and South streets. The church is set back approximately sixty feet east of Main Street and seventy-five feet north of South Street. An asphalt-paved driveway begins at the southwest corner of the parcel, extends past the front of the church, then turns and runs along the north facade toward the rear of the building. Along the northern edge of the parcel the land slopes sharply down several feet toward the adjacent empty lot. Similarly, along the western edge of the parcel the land slopes sharply up several feet as it rises from Main Street, then assumes a gentler slope. The overall manner in which the land rises gently west to east across the parcel can be read in the church's foundation, several inches more of which are exposed at the front than at the rear of the building. The vacant parcel bordering the church on the north is the former site of the Village Grammar School (known in earlier years as "the Academy"), which was demolished in the early twentieth century. Bordering this parcel on the north is a two-story wood-frame former carriage house built in the 1840s with Italianate detailing. For many years this house was owned by the Congregational Church of West Stockbridge and served as the pastor's residence. The house was subsequently divided into apartments and is no longer associated with the church. The house is not included in the present National Register nomination.

Facing Main Street, in the yard in front of the church, stands a painted wood sign, approximately 4' high by 6' wide, that announces the name of the church and its pastor and the schedule for services. In the same yard, near the southwest corner of the church, stands a mature balsam fir tree. A row of five maple trees runs parallel to Main Street between the street and the church's paved driveway. Plantings in the yard north of the church include several hardwood trees and white pine. Near the church's rear entrance (at the southeast corner of the building) stands a white birch tree.

The design of the Congregational Church of West Stockbridge incorporates many elements of the

(continued)

United States Department of the Interior
National Park ServiceNational Register of Historic Places
Continuation SheetCongregational Church of West Stockbridge
West Stockbridge (Berkshire County) MassachusettsSection number 7 Page 2

Stick Style, which was a popular architectural style, especially in the northeastern United States, in the two decades leading up to the church's construction in 1882. Among the church's features that are characteristic of the Stick Style are the steeply pitched gable roof with cross gables; decorative trusswork in the apex of the gables; wooden wall cladding interrupted by horizontal and vertical boards (stickwork) arranged in patterns and faintly reminiscent of the exposed structural members of medieval half-timbered houses; wood cladding (clapboards and shingles) arranged in patterns within the spaces created by the stickwork; overhanging eaves supported by decorative brackets; and the church's square tower with its steep pyramidal roof.

The church rises from a foundation of locally quarried stone (mostly marble). The foundation originally belonged to a Congregational church designed in the Greek Revival style that was built on the site in 1843 and was destroyed by fire in 1881. The church is cruciform in plan. The largest gable block, which rises two and a half stories, is approximately 53' by 35', with its principal axis running north/south. Projecting eastward from this block is a one-and-a-half-story gable block with an approximate footprint of 43' by 8'. A two-story gable block that originally housed a lecture room and currently serves as the church's office projects westward from the center of the main gable block on the church's principal facade. This projecting gable block, which is approximately 22' wide and extends approximately 22' west of the main gable block, is framed by two smaller, one-story blocks (14' wide by 11' deep) that form the entrances to the church. The roof slopes of all five gable blocks are clad with asphalt shingles, as is the roof of the open-work tower that surmounts the two-story gable block. These asphalt shingles are not original fabric but, rather, replace the wood shingles that originally clad the church's roof surfaces.

While the Stick Style was most commonly employed in the late nineteenth century in the design of domestic architecture, the Congregational Church of West Stockbridge attests to the style's appropriateness also for small-scale institutional buildings. Even with its tall tower, the church does not overwhelm its residential neighbors. Perhaps the architectural features that most definitively set the building apart—and also reveal its ecclesiastical nature—are the window and door openings, many of which rise to pointed or gothic arches. The church's west, north, and south facades feature large composite windows that are arranged in arch configurations, and arched or pentagonal transoms surmount many of the building's other windows. Virtually all of the church's window sash feature colored glass and distinctive muntin patterns ("cathedral borders"). For example, windows that are described below as "cathedral four-over-four" consist of (1) a top sash with four large lites bordered along the top and the sides with small lites of colored glass and (2) a bottom sash with four large lites bordered along the sides with small lites of colored glass. In general, dark-colored glass, with contrasting (pale or bright) corner blocks, characterizes the cathedral borders. Except in a few places where plain transparent replacement glass has been installed (presumably due to breakage of the original glass), the large lites of the "cathedral four-over-four" windows throughout the church contain enameled glass boasting a decorative diamond-and-fleur-de-lis pattern.

(continued)

United States Department of the Interior
National Park ServiceNational Register of Historic Places
Continuation SheetCongregational Church of West Stockbridge
West Stockbridge (Berkshire County) MassachusettsSection number 7 Page 3

The builders of the Congregational Church of West Stockbridge embraced the Stick Style's penchant for multitextured wall surfaces by incorporating into the church's design several different types of exterior wood cladding as well as a wide variety of wood ornament and decorative trim. A piece of horizontal stickwork extends along the church's principal (west, north, and south) facades at a level approximately 4' above the building's sill/foundation and establishes an essential datum. (All of the church's first-floor windows rise from this level, their sills intersecting the horizontal stickwork.) The 4'-deep band below this piece of stickwork is clad (except beneath the church's arched composite windows, as noted below) with diagonal wood boards. Above this horizontal stickwork but below the gable peaks the church's exterior walls are clad with horizontal clapboards. The gable peaks are clad with wood shingles in various shapes arranged in alternating bands.

West facade: The church's west (principal) facade, facing Main Street, is symmetrically arranged. Only the narrow red-brick chimney rising through the south slope of the roof of the projecting two-story gable block, which has no counterpart on the roof's north slope, disrupts the symmetry of the composition. At the center of the west facade is a large, arched tripartite window. Each of the three rectangular openings in this composite window contains double-hung four-over-four cathedral-bordered sash surmounted by a transom. The two-lite cathedral-bordered transom over the middle opening takes the form of a pointed arch, while the flanking transoms (also with two large lites and cathedral borders) are squat pentagons. Together the three windows create the impression of a shallow pointed arch—the shape registered in the molded wood trim above the window. The composite window's sill projects beyond the plane of the facade and rests on a modillion band. Beneath the composite window the 4'-deep band of diagonal-board cladding is interrupted by three stickwork arches; the interior of each arch contains wood shingles. In the gable above the composite window the cladding consists of alternating bands of wood shingles of various shapes. The gable features two rectangular window openings at the second-floor level; each opening contains cathedral four-over-four sash. In the space beneath these windows and above the composite window the transition from shingle cladding to clapboards is achieved by flaring out the bottom few rows of shingles, which are underscored by a modillion band. Two much larger decorative wood brackets project out to support the two-story gable block's deep eaves. The otherwise plain and narrow vergeboards blossom into decorative spindlework where they meet these supporting brackets. One of the most striking features of the church's west facade is the decorative trusswork in the apex of the two-story projecting gable, which is echoed in the less elaborate spindlework in the apex of the gable in each entrance block.

Each of the one-story entrance blocks that frame the central projecting two-story gable block on the church's west facade is roofed over in two parts. Adjacent to the two-story block is a narrow strip protected by an extension of the west roof slope of the church's main (two-and-a-half-story) gable block; the remainder of each entrance block is protected by a gable roof with north- and south-facing slopes. The narrow strip of clapboarded wall on the west facade of each entrance block is interrupted by a narrow rectangular window opening that contains cathedral two-over-two sash. The west-facing

(continued)

United States Department of the Interior
National Park Service

National Register of Historic Places Continuation Sheet

Congregational Church of West Stockbridge
West Stockbridge (Berkshire County) Massachusetts

Section number 7 Page 4

gable in each entrance block echoes in its details—the spindlework in the apex, the eave-supporting brackets, the flared wall surface and modillion band marking the transition between wood-shingle cladding (in the gable peak) and horizontal clapboards (below)—the central two-story block. At each entrance, six wood steps framed by simple wood handrails rise through an opening surmounted by a shallow pointed arch (with molded wood trim) to the doors leading to a vestibule. Each double-leaf entrance features two five-panel wood doors.

South facade: The southern facade of the west-facing two-story gable block contains a single window opening with cathedral four-over-four sash, a squat pentagonal two-lite cathedral-bordered transom, and projecting wood trim above the transom. Beneath this opening, interrupting the church's marble foundation, is a rectangular cellar window. The southern facade of the one-story entrance block contains a single rectangular window opening with cathedral four-over-four sash. This window also has a corresponding cellar window. The principal focus of the church's south elevation is the south facade of the principal (two-and-a-half-story) gable block, which is dominated by a large composite window rising to shallow pointed arch. Eight separate openings comprise this window. The four central openings—two narrow rectangles with double-hung sash, each opening surmounted by a shallower narrow opening with double-hung sash (the top sash assuming the form of a tall pointed arch)—contain stained glass. These memorial windows were the work of Messrs. J. & R. Lamb of New York City. They were donated at the time of the church's construction in 1882 by members of the Congregational Society of West Stockbridge; one is dedicated to the memory of Nathan Shaw, a former pastor, and the other to the memory of Marcus Truesdell and his daughter. The four openings that frame and complete this composite window consist of two narrow rectangles with cathedral six-over-six sash and, surmounting each of these openings, a shallower narrow opening with double-hung cathedral two-over-four sash (the top sash being pentagonal in shape). The sill of the composite window projects beyond the plane of the facade and rests on a modillion band. Unlike the tripartite composite window on the church's west facade, this larger four-part composite window rises to invade the shingle-clad portion of the gable, in which (as on the west facade) shingles of various shapes are arranged in alternating bands. The composite window's shallow pointed arch springs from the facade's line of transition from shingle to clapboard cladding, and the modillioned trim above the window is a continuation of the modillion band on which the flared shingles rest. Beneath the composite window the 4'-deep band of diagonal-board cladding is interrupted by three stickwork arches; the interior of each arch contains wood shingles. There are two cellar windows in the south facade of the church's principal gable block; each cellar window is located directly beneath one of the two points from which the central stickwork arch springs. Two additional, slender window openings frame the composite window on the principal gable block's south facade. Each of these windows is located a few feet in from a corner of the gable block and features cathedral six-over-six sash, a squat pentagonal two-lite cathedral-bordered transom, and projecting wood trim above the transom. As on the west facade, the deep eaves of the gable block are supported on decorative brackets and the otherwise plain and narrow vergeboards blossom into spindlework where they meet these brackets. The south facade of the church's main gable block is conspicuously devoid of the sort of ornate

(continued)

United States Department of the Interior
National Park ServiceNational Register of Historic Places
Continuation SheetCongregational Church of West Stockbridge
West Stockbridge (Berkshire County) MassachusettsSection number 7 Page 5

trusswork that characterizes the principal gable end on the west facade. The south facade of the shallow rear (one-and-a-half-story) gable block is clad entirely with wood clapboards and contains a simple wood door; a wood ramp with a wood handrail leads to this door and provides wheelchair access to the church.

North facade: The church's north facade is virtually a mirror image of the south facade, the most notable exception being that the rear gable block has no door and is characterized by a lower roofline on the north. The stained-glass memorial windows on the north facade were donated in memory of Matthew Freedley and Sylvester and Rena Spencer.

East facade: The one-and-a-half-story rear gable block has a complex roofline. From the gable peak to the level of the eaves of the church's main gable block the roof is steeply pitched; it then assumes a more gradual pitch as it continues on either side. The entire east facade of this projecting gable block is clad with horizontal clapboards and is devoid of stickwork. By contrast, the east facade of the principal gable block features the 4'-deep band of diagonal-board cladding from window-sill level down to the foundation. A cathedral six-over-six window with a two-lite cathedral-bordered pentagonal transom and projecting wood trim interrupts the east facade of the principal gable block at the southeast corner. Fenestration in the rear facade of the one-and-a-half-story gable block consists of a diamond-shaped stained-glass window just below the gable peak and, at first-floor level, a rectangular cathedral four-over-four window in each of the original shed extensions of the gable block.

In 1959, as part of a project that involved the installation of a new furnace, the church's basement was deepened by approximately 18". A new concrete floor and concrete footings below the church's original marble foundation were installed. The result was a full basement in which Sunday school classes and community suppers could be held. The only exterior evidence of this renovation project is at the northeast corner of the church, where an entrance to the basement was created through the construction of a small addition to the original one-and-a-half-story projecting gable block. This addition simply extends the roofline of the original gable block, and, in so doing, partly obscures an original window opening on the east facade at the northeast corner of the church's principal gable block; the original window surround is still partly visible and the cathedral-bordered two-lite pentagonal transom is intact, but the rectangular opening has been filled in with horizontal clapboards.

The church's openwork bell tower rises near the rear of the west-facing two-story gable block. The tower's bell, which weights 809 pounds and is rung by a rope, was supplied by the Meneely Bell Company of West Troy, New York. The tower itself is square in plan and consists of a steep, four-sided, asphalt-shingled base; decorative trusslike openwork; and a steeply pitched, asphalt-shingled pyramidal roof that flares slightly where it meets the openwork walls supporting it. The openwork on each side of the tower features two large pentagonal openings topped by diamond latticework. On each side two wood brackets anchor the openwork to the base and five smaller projecting brackets "support" the tower's roof. The tower is surmounted by a delicate and elaborate

(continued)

United States Department of the Interior
National Park Service

National Register of Historic Places Continuation Sheet

Congregational Church of West Stockbridge
West Stockbridge (Berkshire County) Massachusetts

Section number 7 Page 6

copper finial: a slender spike rising out of shooting, sprouting, drooping, and unfurling leaves through a three-inch-deep crownlike band. A much less ornate finial graces the roof ridge near the front (west end) of the two-story gable block; recessed to the point where the projecting eaves begin, this finial occupies the same plane as the exterior wall surface of the gable block's west facade.

The exterior of the Congregational Church of West Stockbridge was originally painted in three complementary shades of olive green. Today the church's exterior is painted white; the double-leaf doors of the church's two principal entrances on the west facade are painted red.

The interior of the Congregational Church of West Stockbridge retains many of its original finishes and furnishings, including pews, choir loft, wainscoting, and other ornamental trim and woodwork of native chestnut grown in the area. East of the entrance vestibules is the sanctuary, whose visual focus is the speaker's podium and, beyond it, the colorful pipe organ, which occupies the one-and-a-half-story wing east of the sanctuary. The church's pews are arranged amphitheater-style, in concentric arcs, and the floor slopes gently as it approaches the speaker's platform. The pipe organ, installed in 1883, was built by William A. Johnson of Johnson & Son, Westfield, Massachusetts, and was rebuilt and enlarged in 1975 by Andover Organ Company of Methuen, Massachusetts. The painted pipes, detailed in gold, are made of pine and spruce. Above the organ is the diamond-shaped stained-glass window, which features a transparent globe bearing the motto "THE LORD OUR RIGHTEOUSNESS." The church office, formerly the lecture room, in the west-facing gable block framed by the entrance vestibules, is separated from the sanctuary by sliding sash that can be lifted to unite the two rooms. The exposed truss beams in the interior of the church are characteristic of the Stick Style.

Archaeological Description

While no prehistoric sites are currently recorded on the church property or in the general area (within one mile), it is possible that sites are present. The physical characteristics of the property—a well-drained, level to moderately sloping terrace within 1,000 feet of the Williams River, a tributary of the Housatonic River drainage—indicate locational criteria that are favorable for prehistoric settlement and subsistence activities. In general, however the small size of the parcel (0.35 acres) and church construction indicate a low potential for significant prehistoric survivals.

A high potential exists for historic archaeological resources on the property. The existing church was built on the foundation of an earlier (1843) church that burned in 1881. Structural remains may exist from portions of the earlier church that were not incorporated into the existing church. Structural remains may also survive from a privy associated with the earlier church. Archaeological deposits may also survive from the 1881 fire, including building debris from the earlier church. Sheet refuse patterns may exist from activities conducted at the existing and earlier church.

(end of Section 7)

8. Statement of Significance

Applicable National Register Criteria

(Mark "x" in one or more boxes for the criteria qualifying the property for National Register listing.)

- A** Property is associated with events that have made a significant contribution to the broad patterns of our history.
- B** Property is associated with the lives of persons significant in our past.
- C** Property embodies the distinctive characteristics of a type, period, or method of construction or represents the work of a master, or possesses high artistic values, or represents a significant and distinguishable entity whose components lack individual distinction.
- D** Property has yielded, or is likely to yield, information important in prehistory or history.

Criteria Considerations

(Mark "x" in all the boxes that apply.)

Property is:

- A** owned by religious institution or used for religious purposes.
- B** removed from its original location.
- C** a birthplace or grave.
- D** a cemetery.
- E** a reconstructed building, object, or structure.
- F** a commemorative property.
- G** less than 50 years of age or achieved significance within the past 50 years.

Narrative Statement of Significance

(Explain the significance of the property on one or more continuation sheets.)

9. Major Bibliographical References

(Cite the books, articles, and other sources used in preparing this form on one or more continuation sheets.)

Previous documentation on file (NPS):

- preliminary determination of individual listing (36 CFR 67) has been requested
- previously listed in the National Register
- previously determined eligible by the National Register
- designated a National Historic Landmark
- recorded by Historic American Buildings Survey # _____
- recorded by Historic American Engineering Record # _____

Areas of Significance

(Enter categories from instructions)

- ARCHITECTURE
- COMMUNITY PLANNING AND DEVELOPMENT

Period of Significance

1843-1946

Significant Dates

1843, 1882

Significant Person

(Complete if Criterion B is marked above)

N/A

Cultural Affiliation

N/A

Architect/Builder

C. T. Rathbun / Billy H. Hatch

Primary location of additional data:

- State Historic Preservation Office
- Other State agency
- Federal agency
- Local government
- University
- Other

Name of repository:

Massachusetts Historical Commission

10. Geographical Data

Acreage of Property 0.35 acres

UTM References

(Place additional UTM references on a continuation sheet)

1. 18	634550	4687780	3.		
Zone	Easting	Northing	Zone	Easting	Northing
2.			4.		
Zone	Easting	Northing	Zone	Easting	Northing

 See continuation sheet

Verbal Boundary Description

(Describe the boundaries of the property on a continuation sheet.)

Boundary Justification

(Explain why the boundaries were selected on a continuation sheet.)

11. Form Prepared By

name/title Edna B. Garnett, West Stockbridge Historical Commission, with Betsy Friedberg, NR Director, MHC

organization Massachusetts Historical Commission date July 1996

street & number 220 Morrissey Boulevard telephone 617 727-8470

city or town Boston state MA zip code 02125

Additional Documentation

Submit the following items with the completed form:

Continuation Sheets

Maps

A **USGS map** (7.5 or 15 minute series) indicating the property's location.

A **sketch map** for historic districts and properties having large acreage or numerous resources.

Photographs

Representative **black and white photographs** of the property.

Additional items (Check with the SHPO or FPO for any additional items)

Property Owner

(Complete this item at the request of the SHPO or FPO.)

name West Stockbridge Village Congregational Church

street & number 45 Main Street, P. O. Box 293 telephone

city or town West Stockbridge state Massachusetts zip code 01266

Paperwork Reduction Act Statement: This information is being collected for applications to the National Register of Historic Places to nominate properties for listing or determine eligibility for listing, to list properties, and to amend existing listings. Response to this request is required to obtain a benefit in accordance with the National Historic Preservation Act, as amended (16 U.S.C. 470 et seq.).

Estimated Burden Statement: Public reporting burden for this form is estimated to average 18.1 hours per response including the time for reviewing instructions, gathering and maintaining data, and completing and reviewing the form. Direct comments regarding this burden estimate or any aspect of this form to the Chief, Administrative Services Division, National Park Service, P.O. Box 37127, Washington, DC 20013-7127; and the Office of Management and Budget, Paperwork Reductions Project (1024-0018), Washington, DC 20503.

United States Department of the Interior
National Park Service

National Register of Historic Places Continuation Sheet

Congregational Church of West Stockbridge
West Stockbridge (Berkshire County) Massachusetts

Section number 8 Page 1

8. Statement of Significance

The history of the Congregational Church of West Stockbridge is closely intertwined with the history of the town itself, which was established in 1774 largely through the efforts of 18th-century settlers of the region who were Congregationalists of English descent. The current Congregational Church of West Stockbridge, built in 1882 on the site of a church building constructed in 1834 and destroyed by fire in 1881, is the sole remaining Congregational church building in West Stockbridge and has been a focus of religious and social activity in the town for more than a century. In addition, the church is significant as the town's most prominent and best-preserved example of Stick Style architecture. The Congregational Church of West Stockbridge meets National Register criteria A and C at the local level.

In the 1760s what is now the town of West Stockbridge was still part of the town of Stockbridge, Massachusetts. Efforts to separate apparently initiated in March 1768, when the warrant for Stockbridge's town meeting included an article "to see if the town [of Stockbridge] will remit to the inhabitants living on the west side of the mountain, the whole or a part of their taxes, in order for said inhabitants to hire preaching among themselves, such part of the year as their taxes will pay for." A committee was thus established to develop plans for partitioning the town, with the eventual result being the incorporation of West Stockbridge in 1774.

Following the election of the new town's first officers, one of the first recorded actions was a vote "to raise some money to hire preaching." Twelve pounds were allocated for the year 1774, and the town hired the Rev. William Aaron Bogue, on a probationary basis, to lead worship services that were conducted in private homes.

In January 1776 the town of West Stockbridge voted to build a meetinghouse, but early efforts to raise money for construction were impeded by the Revolutionary War. Throughout the ensuing decade the town continued to allocate funds for hiring preachers, and services continued to be conducted in private homes. Not until 1786 did the town begin to realize its plans for building a meetinghouse, when a building "54' long, 42' wide and 23' high" began to rise in the area of West Stockbridge now known locally as West Center. In April 1789 the meetinghouse was sufficiently complete that town meeting could be held there; at the time, however, the building still lacked windows and a stove. The meetinghouse was painted in 1792, and by 1793 windows and a stove were in place.

Among the citizens of West Stockbridge who worshiped at the meetinghouse were Baptists as well as Congregationalists, and the members of both denominations were assessed equally for the support of preaching. The advisory council established by the town in August 1789 for administering the public worship consisted of three Congregationalists and three Baptists. But the members of the Congregational society, who apparently outnumbered the Baptists, appear to have dominated worship-related activities. Town records indicate that in 1791 "all denominations dissenting from the

(continued)

United States Department of the Interior
National Park Service

National Register of Historic Places Continuation Sheet

Congregational Church of West Stockbridge
West Stockbridge (Berkshire County) Massachusetts

Section number 8 Page 2

Congregational order be excused from paying any part of the settlement or salary" of the minister hired to preach at the meetinghouse. In 1793 a separate Baptist Society of West Stockbridge was established, and from that year on the meetinghouse was used by the Congregational order only. By 1798 the Baptists had built a church of their own in West Stockbridge.

The original West Stockbridge meetinghouse, known locally as the West Center Church, served as the principal site of worship for the Congregationalists of West Stockbridge through several decades. In 1828 a bell tower and steeple were added to the edifice. By 1833, however, the development of West Stockbridge village outpaced the development of West Center, thanks largely to Col. Williams's Iron Works, and a new religious society--the Congregational Society of West Stockbridge--was organized in West Stockbridge village. Elijah Williams, the founder of the ironworks, was a member of the committee that planned the construction of the town's original meetinghouse. He was also one of several prominent citizens of West Stockbridge who were largely responsible for the industrial development--the founding and rapid growth of the mills, foundries, quarries, and kilns--that caused West Stockbridge's population to burgeon in the nineteenth century. This development, fueled by the arrival of the railroad, became the occasion for the emergence of a professional class of merchants, businessmen, doctors, etc., many of whom settled and built houses in West Stockbridge village.

For nearly ten years the Congregational Society of West Stockbridge held services in the second floor of a village schoolhouse that had been constructed in 1828. In 1838 the Rev. Charles Edwards Lester became the first pastor of the Village Congregational Church. He was a noted writer and lecturer; his published works include *A Mountain Wild Flower* and the two-volume *The Glory and Shame of England*. After serving as pastor for little more than a year, Rev. Lester resigned; soon thereafter he was appointed by President Tyler as Consul to the Port of Genoa, Italy.

In 1843 the Society constructed a church on lower Main Street in West Stockbridge village. This church was one and a half stories tall and designed in the Greek Revival style, with a pedimented portico facing Main Street and a tall square tower. The church occupied the same site--indeed the same foundation--as the present church, from which it differed most significantly in that the primary axis of the sanctuary ran east/west rather than north/south.

In 1881 the Greek Revival-style church building in West Stockbridge village was destroyed by fire, and the Society hastened to replace it with the present Stick Style church, which was completed in 1882. The source of the new church's design may have been a pattern book; church records attribute the design to "Volks of Boston." The Society employed an architect, Charles T. Rathbun of Pittsfield, who, with the assistance of a local builder, B. H. Hatch of Great Barrington, apparently adapted the pattern to suit the site and to allow reuse of the existing foundation. Rathbun was also responsible for the design of several other architecturally significant buildings in the region, among them the First United Methodist Church in Pittsfield, the Memorial Hall in Lee, and Congregational churches in Williamstown and Housatonic.

(continued)

United States Department of the Interior
National Park Service

National Register of Historic Places Continuation Sheet

Congregational Church of West Stockbridge
West Stockbridge (Berkshire County) Massachusetts

Section number 8 Page 3

Virtually since its completion in 1882 the Congregational Church of West Stockbridge has been a hub of social as well as religious activity in West Stockbridge village. The church has been used for worship, concerts, lectures, and other social gatherings. Among the Society's members have been town leaders representing the spectrum of economic and professional activity in the town: farmers, mill owners, merchants, railroad officials, businessmen, lawyers, and physicians.

As the Congregational Society of West Stockbridge grew and flourished, the town's original meetinghouse, the West Center Church, also continued to serve as a place of worship for Congregationalists in West Stockbridge--until 1956, when the building was struck by lightning and destroyed. The remains of the West Center Church's foundation have been adapted to serve as an open-air chapel, which is still used occasionally, weather permitting. Since 1956 the Congregational Church of West Stockbridge has served as the town's only permanent Congregational church.

While late nineteenth-century development in West Stockbridge included the construction of several residences that contain elements of the Stick Style and various other Victorian-era architectural styles, the West Stockbridge Congregational Church stands apart as the town's best, as well as best-preserved, example of the style. With minimal alteration of its historic fabric, and with massing, proportions, and detailing that are exemplary of the Stick Style, the church survives as a prominent architectural landmark in the village. Today, as for more than a century, the West Stockbridge Congregational Church provides the town of West Stockbridge not only with a building of great architectural interest and integrity but also with a tangible and important link to its Congregationalist founders.

Archaeological Significance

Historic archaeological remains described above have the potential to document the earlier church, which stood on the property but burned in 1881, and the extent to which the existing church was built within the footprint of the earlier church. Archaeological testing on the property has the potential to identify construction features related to the original church and its existing replacement. This information can document techniques used in the original construction as well as the extent to which surviving remains of the original church were incorporated into the present structure. Detailed analysis of privy remains, if they exist, can contribute social, cultural, and economic data on parishioners of the original church that would represent a cross section of a portion of West Stockbridge 19th-century society.

(end of Section 8)

United States Department of the Interior
National Park Service

National Register of Historic Places Continuation Sheet

Section number 9, 10 Page 1

Congregational Church of West Stockbridge
West Stockbridge (Berkshire County) Massachusetts

9. Major Bibliographical References

Berkshire Courier (Great Barrington, Massachusetts), February 22, 1882.

Congregational Church of West Stockbridge, Massachusetts. Unpublished church records.

Garnett, Edna Bailey. West Stockbridge, Massachusetts, 1774-1974. Great Barrington, Massachusetts: Southern Berkshire Web Press, 1990.

McAlester, Virginia and Lee. A Field Guide to American Houses. New York: Alfred A. Knopf, 1984.

Scully, Vincent J., Jr. The Shingle Style and the Stick Style, rev. ed. New Haven, Connecticut: Yale University Press, 1971.

10. Geographical Data

Verbal Boundary Description

The Congregational Church of West Stockbridge occupies a 0.35-acre L-shaped lot at the intersection of Main and South streets in West Stockbridge village. The property is identified as parcel No. 0704 on the accompanying photocopy of West Stockbridge assessor's map page 14.

Verbal Boundary Justification

The property nominated for listing in the National Register of Historic Places encompasses all of the property in West Stockbridge village currently and historically associated with the Congregational Church of West Stockbridge.

(end)



TRUE NORTH
 GRID NORTH
 TRUE NORTH

ASSESSOR'S MAP PAGE 14 PARCEL # 0704
 DEED RECORDED IN SOUTH BERKSHIRE REGISTRY OF DEEDS
 BOOK 89 PAGE 221 SCALE 1" = 100'
 PARCEL-0.35 ACRE

CONGREGATIONAL CHURCH
 OF WEST STOCKBRIDGE
 (BERKSHIRE COUNTY),
 MASSACHUSETTS

Boundary Length Designation:

Deed Length	1800	or	1800(00)
Map Length	18000		
Scaled Length	18000		

OF ADVA... DESIGNA
 4

UNITED STATES DEPARTMENT OF THE INTERIOR
NATIONAL PARK SERVICE

NATIONAL REGISTER OF HISTORIC PLACES
EVALUATION/RETURN SHEET

REQUESTED ACTION: NOMINATION

PROPERTY NAME: Congregational Church of West Stockbridge

MULTIPLE NAME:

STATE & COUNTY: MASSACHUSETTS, Berkshire

DATE RECEIVED: 7/19/96 DATE OF PENDING LIST: 7/30/96
DATE OF 16TH DAY: ~~8/15/96~~ DATE OF 45TH DAY: 9/02/96
DATE OF WEEKLY LIST:

REFERENCE NUMBER: 96000899

NOMINATOR: STATE

REASONS FOR REVIEW:

APPEAL: N DATA PROBLEM: N LANDSCAPE: N LESS THAN 50 YEARS: N
OTHER: N PDIL: N PERIOD: N PROGRAM UNAPPROVED: N
REQUEST: N SAMPLE: N SLR DRAFT: N NATIONAL: N

COMMENT WAIVER: Y

ACCEPT RETURN REJECT 7.30.96 DATE

ABSTRACT/SUMMARY COMMENTS:

Comment period waived

RECOM./CRITERIA _____

REVIEWER _____ DISCIPLINE _____

TELEPHONE _____ DATE _____

DOCUMENTATION see attached comments Y/N see attached SLR Y/N



HYMNS
251
252

HYMNS
251
252

EXIT

W. STOCKBRIDGE CONGREGATIONAL CHURCH
45 MAIN ST
W. STOCKBRIDGE, MASSACHUSETTS

J. ANDERSON
7.20.93

PHOTO # 1A OF 6 A&B

ALTER VIEW



W. STOCKBRIDGE CONGREGATIONAL CHURCH

45 MAIN ST

W. STOCKBRIDGE, MASSACHUSETTS

JIM ANDERSEN

7.20.93

PHOTO # 2A OF 6A:3

SOUTHWEST SIDE OF CHURCH



W. STOCKBRIDGE CONGREGATIONAL CHURCH

45 MAIN ST

W. STOCKBRIDGE MA

JIM ANDERSEN

7.20.93

PHOTO # 4A OF 6A & B

NORTH SIDE OF CHURCH



W. STOCKBRIDGE CONGREGATIONAL CHURCH

45 MAIN ST

W. STOCKBRIDGE, MASSACHUSETTS

JIM ANDERSEN

7.20.93

PHOTO 3A OF 6 A & B

WEST SIDE OF CHURCH



4
5

Congregational
Church
of
West Stockbridge
Established 1833
Worship 10:00 AM
Minister
Rev. Allison Stokes
Ph. D.

W. STOCKBRIDGE CONGREGATIONAL CHURCH

45 MAIN ST

W. STOCKBRIDGE, MASSACHUSETTS

JIM ANDERSEN

7.20.93

PHOTO # 5A OF 6 A/B

DOOR DETAIL



W. STOCKBRIDGE CONGREGATIONAL CHURCH

45 MAIN ST

W. STOCKBRIDGE, MASSACHUSETTS

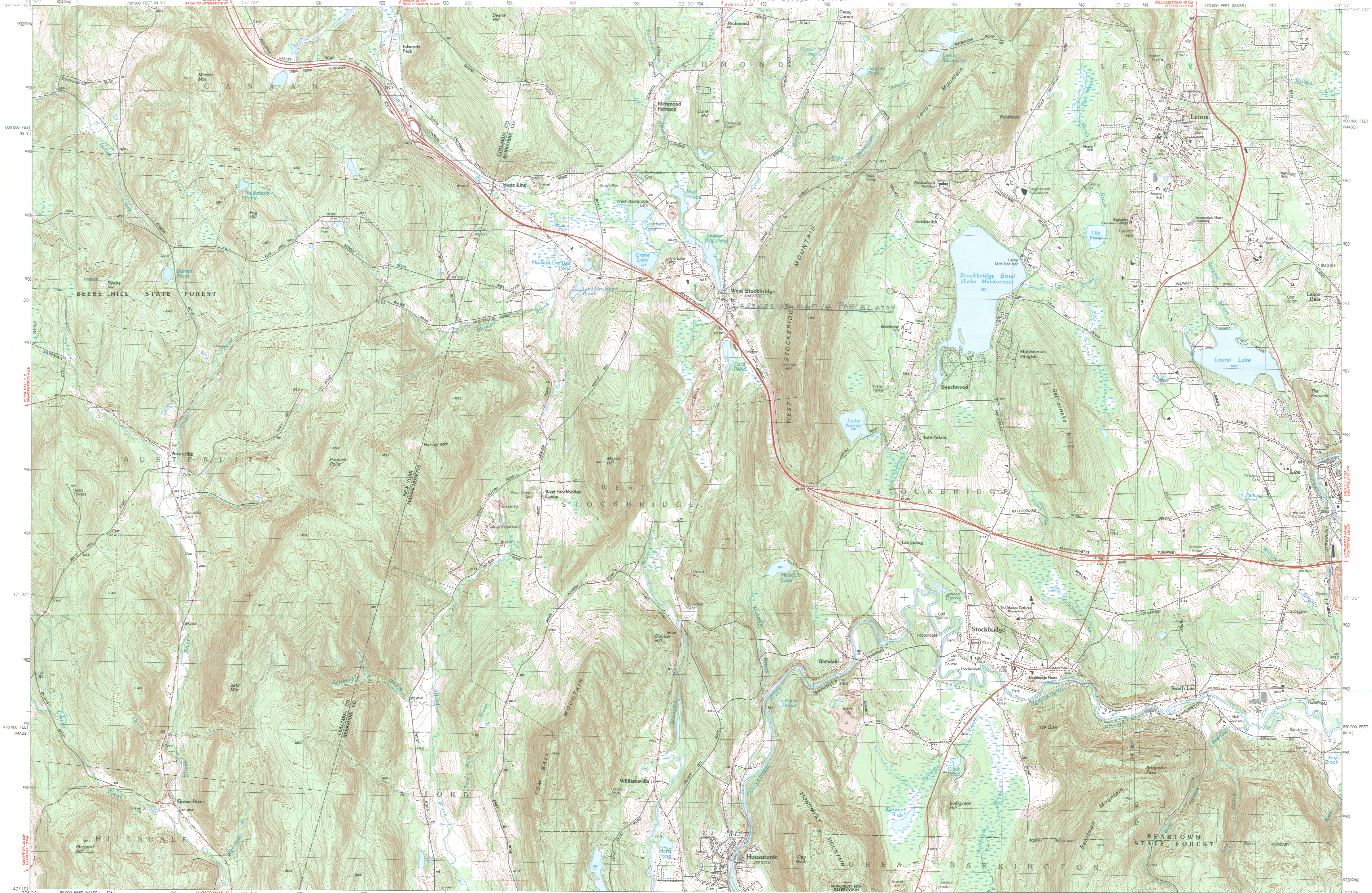
JIM ANDERSEN

7-20-93

PHOTO # 6A OF 6A:3

ORGAN

STOCKBRIDGE, MASSACHUSETTS-NEW YORK



Stockbridge

MASSACHUSETTS-NEW YORK

1:25 000-scale metric topographic map

7.5 X 15 MINUTE QUADRANGLE SHOWING

- Contours and elevations in meters
- Highways, roads and other manmade structures
- Water features
- Woodland areas
- Geographic names

1987

Produced by the United States Geological Survey in cooperation with Massachusetts Department of Public Works
 Control by USGS, NOS/NOAA, and Commonwealth of Massachusetts agencies
 Compiled by photogrammetric methods from aerial photographs taken 1980. Field checked 1981. Map edited 1987
 The west half of this area also covered by 7.5-minute 1:25,000-scale map: State Line dated 1975
 The east half of this area supersedes Stockbridge 1:25,000-scale map dated 1973
 Projection and 1000-meter grid, zone 18
 Universal Transverse Mercator
 10,000-foot grid ticks based on Massachusetts coordinate system, installed zone and New York coordinate system, east zone 1927 North American Datum
 To place on the predicted North American Datum 1983, move the projection lines 2 meters south and 36 meters west as shown by dashed corner ticks
 There may be private inholdings within the boundaries of the National or State reservations shown on this map

CONTOUR INTERVAL 3 METERS
 NATIONAL GEODETIC VERTICAL DATUM OF 1929
 CONTROL ELEVATIONS SHOWN TO THE NEAREST 0.1 METER
 OTHER ELEVATIONS SHOWN TO THE NEAREST 0.5 METER

THIS MAP COMPLIES WITH NATIONAL MAP ACCURACY STANDARDS

CONVERSION TABLE		DECLINATION DIAGRAM		ADJOINING MAPS		
Meters	Feet	MN	GN	1	2	3
1	3.2808		20°	4	5	6
2	6.5617			4	5	6
3	9.8425			4	5	6
4	13.1234			4	5	6
5	16.4042			4	5	6
6	19.6850			4	5	6
7	22.9658			4	5	6
8	26.2467			4	5	6
9	29.5275			4	5	6
10	32.8084			4	5	6

To convert meters to feet multiply by 3.2808
 To convert feet to meters multiply by 0.3048

UTM grid convergence (GN) by 100 meters: declination (MN) at center of map Diagram is approximate

FOR SALE BY U.S. GEOLOGICAL SURVEY
 DENVER, COLORADO DISTRICT OFFICE, RESTON, VIRGINIA 22092
 Price \$19.95 (US \$20.15)
 55' 28" GREEN SCOTT

Topographic Map Symbols

Primary highway, hard surface
Secondary highway, hard surface
Light-duty road, hard or improved surface
Unimproved road, trail
Route marker: Interstate, U. S., State
Railroad: standard gauge, narrow gauge
Bridge: drawbridge
Footbridge; overpass; underpass
Build-up area: only selected landmark buildings shown
House; barn; church; school; large structure
Boundary:
National, with monument
State
County, parish
City, township, precinct, district
Incorporated city, village, town
National or State reservation, small park
Land grant with monument; found section corner
U. S. public lands survey: range, township, section
Range, township, section line: location approximate
Fence or field line
Power transmission line, located tower
Canal, dam with lock
Cemetery; grave
Campground; picnic area; U. S. location monument
Windmill; water well; spring
Mine shaft; prospect; shaft or cave
Control: horizontal station; vertical station; spot elevation
Contour: index; intermediate; supplementary; depression
Disturbed surface: strip mine, lava, sand
Bathymetric contour; index; intermediate
Perennial lake and stream; intermittent lake and stream
Rapid, large and small; falls, large and small
Swamp; marsh
Submerged marsh; land subject to controlled inundation
Woodland: scattered trees
Shrub; mangrove
Orchard; vineyard

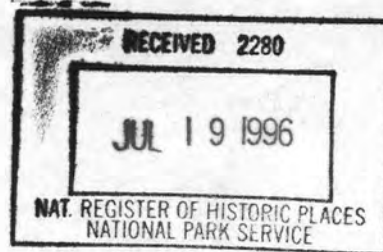
A pamphlet describing topographic maps is available on request



The Commonwealth of Massachusetts
William Francis Galvin, Secretary of the Commonwealth
Massachusetts Historical Commission

July 18, 1996

Carol Shull
Keeper
National Register of Historic Places
Department of the Interior
National Park Service
P. O. Box 37127
Washington, D. C. 20013-7127



Dear Ms. Shull:

Enclosed please find the following nomination form:

Congregational Church of West Stockbridge, West Stockbridge (Berkshire County),
Massachusetts, 01266.

The nomination has been voted eligible by the State Review Board and has been signed by the State Historic Preservation Officer. Owners were notified of pending State Review Board consideration 30-75 days before the meeting and were afforded the opportunity to comment.

The owners of the property are planning a celebratory fundraising event in early August 1996. With the understanding that a waiver of the customary 15-day Federal Register commenting period is necessary to assist in the preservation of the Congregational Church of West Stockbridge (36 CFR 60.13(a)), the Massachusetts Historical Commission respectfully requests that the commenting period be waived.

Sincerely,

A handwritten signature in cursive script that reads "Betsy Friedberg".

Betsy Friedberg
National Register Director
Massachusetts Historical Commission

enclosure

cc: Edna B. Garnett, West Stockbridge Historical Commission
Rev. Allison Stokes, Congregational Church of West Stockbridge
Daniel Sartori, Chairman, Board of Selectmen, Town of West Stockbridge