

832

United States Department of the Interior  
National Park Service



# National Register of Historic Places Registration Form

This form is for use in nominating or requesting determinations for individual properties and districts. See instructions in National Register Bulletin #39 to Complete the National Register of Historic Places Registration Form. If any item does not apply to the property being nominated, enter "not applicable." For functions, architectural classification, materials, and areas of significance, enter only categories and subcategories from the instructions. Place additional certification comments, entries, and narrative items on continuation sheets if needed (NPS Form 10-900a).

## 1. Name of Property

Historic name Derby Public School - District 6

Other names/site number KHRI # 173-10562

Name of related Multiple Property Listing Historic Public Schools of Kansas

## 2. Location

Street & number 716 East Market Street   not for publication

City or town Derby   vicinity

State Kansas Code KS County Sedgwick Code 173 Zip code 67037

## 3. State/Federal Agency Certification

As the designated authority under the National Historic Preservation Act, as amended,

I hereby certify that this  nomination  request for determination of eligibility meets the documentation standards for registering properties in the National Register of Historic Places and meets the procedural and professional requirements set forth in 36 CFR Part 60.

In my opinion, the property  meets  does not meet the National Register Criteria. I recommend that this property be considered significant at the following level(s) of significance:

national  statewide  local Applicable National Register Criteria:  A  B  C  D

*Patrick Zollner*  
Signature of certifying official/Title

Patrick Zollner, Deputy SHPO Date 8-15-14

Kansas State Historical Society  
State or Federal agency/bureau or Tribal Government

In my opinion, the property  meets  does not meet the National Register criteria.

Signature of commenting official \_\_\_\_\_ Date \_\_\_\_\_

Title \_\_\_\_\_ State or Federal agency/bureau or Tribal Government \_\_\_\_\_

## 4. National Park Service Certification

I hereby certify that this property is:

entered in the National Register  determined eligible for the National Register

determined not eligible for the National Register  removed from the National Register

other (explain:)

*Jon Edson H. Beall*  
Signature of the Keeper

10.8.14  
Date of Action

Derby Public School – District 6  
Name of Property

Sedgwick County, Kansas  
County and State

**5. Classification**

**Ownership of Property**  
(Check as many boxes as apply.)

**Category of Property**  
(Check only **one** box.)

**Number of Resources within Property**  
(Do not include previously listed resources in the count.)

<input checked="" type="checkbox"/>	private
<input type="checkbox"/>	public - Local
<input type="checkbox"/>	public - State
<input type="checkbox"/>	public - Federal

<input checked="" type="checkbox"/>	building(s)
<input type="checkbox"/>	district
<input type="checkbox"/>	site
<input type="checkbox"/>	structure
<input type="checkbox"/>	object

<b>Contributing</b>	<b>Noncontributing</b>	
<u>1</u>		buildings
		sites
		structures
		objects
<u>1</u>		<b>Total</b>

**Number of contributing resources previously listed in the National Register**

0

**6. Function or Use**

**Historic Functions**  
(Enter categories from instructions.)

Education: School  
\_\_\_\_\_  
\_\_\_\_\_  
\_\_\_\_\_  
\_\_\_\_\_  
\_\_\_\_\_  
\_\_\_\_\_

**Current Functions**  
(Enter categories from instructions.)

Recreation and Culture: Museum  
\_\_\_\_\_  
\_\_\_\_\_  
\_\_\_\_\_  
\_\_\_\_\_  
\_\_\_\_\_

**7. Description**

**Architectural Classification**  
(Enter categories from instructions.)

Late 19<sup>th</sup> early 20<sup>th</sup> Century American Movement  
Commercial Style with Late Gothic Revival/  
Collegiate Details  
\_\_\_\_\_  
\_\_\_\_\_  
\_\_\_\_\_

**Materials**  
(Enter categories from instructions.)

Foundation: Stone  
Walls: Brick  
\_\_\_\_\_  
Roof: Asphalt  
Other: \_\_\_\_\_  
\_\_\_\_\_

Derby Public School – District 6  
Name of Property

Sedgwick County, Kansas  
County and State

---

### Narrative Description

(Describe the historic and current physical appearance and condition of the property. Describe contributing and noncontributing resources, if applicable. Begin with a **summary paragraph** that briefly describes the general characteristics of the property, such as its location, type, style, method of construction, setting, size, and significant features. Indicate whether the property has historic integrity.)

### Summary

The Derby Public School building (built 1923) is located at the northwest corner of Woodlawn Boulevard and Market Street in Derby, Sedgwick County, Kansas. The two-story, red-brick building faces west and exhibits elements of the Commercial and Collegiate Gothic architectural styles. Wichita architect Samuel Siegfried (S.S.) Voigt designed the building, and it was constructed by the Wichita Construction Company. The building functioned as a school until 1996. Today, the building is owned by the Derby Historical Society and houses the Derby Historical Museum.

---

### Elaboration

The building occupies less than one acre on a city block dedicated entirely to public school-related infrastructure. The building faces west overlooking a grassy, undeveloped lawn. The site slopes slightly, downward to the west. The historic environs are virtually non-extant, and the neighboring blocks include later 20<sup>th</sup> and early 21<sup>st</sup> century school-related development (including bus storage, athletic fields, and school buildings).

The building is approximately 16,000 square feet divided into 13 rooms of various sizes. A single-story addition was added to the southeast corner of the building in 1952. Several of the exterior doors around the building have been modified through the years.

Architect S. S. Voigt was creative in his design using two colors of red brick to break up large wall surfaces. The building's base is concrete, above which is a brick wainscot of darker brick topped with a header course. Above the wainscot is brick of a lighter color, which extends approximately two stories high. Several courses of brick above the second-story windows begin a nicely detailed parapet, which begins with a slightly projected header course. Above the header course is a soldier course, which slopes outward. The bottom of the soldier course projects approximately three inches and slopes back flush with the wall. Above the soldier course is a darker basket weave pattern of brick, approximately eight inches high. Above this course is a typical running bond of twelve courses topped with a stone cap. The parapet is crenellated. The corners are terminated with cast stone pieces to match the projected soldier and header courses of brick.

The west elevation includes five bays. The two end bays project forward slightly and lack any fenestration, but have brick details using projected darker header brick to create large rectangular designs with small cast concrete pieces at the corners. The center entry bay projects forward slightly. The ground-level entrance has large cast stone quoins on the side walls and is topped by a cast stone arched opening. Above the entrance is "Public School" set in a cast stone panel outlined by brick. Above this is a pair of double-hung windows. This center entry bay is flanked on either side by six pairs of windows, three on each story, for a total of 24 windows. The six-over-six, double-hung windows are new (2014) and are the third generation of sashes to occupy the original masonry openings.

#### *West Elevation (Primary)*

The building's west elevation includes the original front entrance, though it is no longer used as such. The west elevation features five bays. The two end bays project forward slightly and lack any fenestration, but have brick details using projected darker header brick to create large rectangular designs with small cast

Derby Public School – District 6  
Name of Property

Sedgwick County, Kansas  
County and State

concrete pieces at the corners. The center entry bay projects forward slightly, though less than the two end bays. The ground-level entrance, the building's primary entry, has large cast stone quoins on the side walls and is topped by a cast stone arched opening. The wood double-doors (not original) are set slightly within the arched opening. Above the entrance is the phrase "Public School" set in a cast stone panel outlined by brick. Above this is a pair of double-hung windows. This center entry bay is flanked on either side by six pairs of windows, three on each story, for a total of 24 windows. The six-over-six, double-hung windows are new (2014) and are the third generation of sashes to occupy the original masonry openings.

The original flagpole affixed to the roof and is located directly above the central entry. A cornerstone is located at the southwest corner of the building. The west face reads: "A.D. 1923 / Board W.E. Brian Dir. / Albert Lauber Clerk. / J.J. Butterfield Treas." The south face reads: "S.S. Voigt Archt. / Wichita Const. Co. / Contractor."

### *South Elevation (Side)*

The south façade faces Market Street. It contains a secondary entrance that has functioned for many years as the building's main entrance because of its proximity to parking. A concrete ramp to the entrance with metal pipe railings provides wheelchair access into the building. The central entrance is set within a projecting one-story bay with a round-arch entrance. The round-arch opening is flanked by brick pilasters topped by cast stone. The entry bay has a flat roof with a cast stone parapet. Above the entry bay, flush with the remainder of the elevation, is a pair of six-over-six, double-hung windows. The west portion of this elevation includes four groupings of three windows – two on the first story and two on the second story – for a total of 12 windows. The east portion of this elevation includes two groupings of three windows on the second story only. The first story windows were downsized and replaced in 1952 with small, metal windows with horizontal muntins (to accommodate larger bathroom spaces on the interior). This side also includes the original coal chute at the building's foundation, which has been covered with a protective concrete platform.

A one-story addition (1952) attaches to the southeast corner of the building. It is described below in more detail.

### *North Elevation (Side)*

This side of the building was built identical to the south elevation. Much of this building is obscured by the adjacent building erected in 1953 just eight feet to the north. A covered walkway connects the two buildings at the north door opening. The 1953 building was built to house a cafeteria and kitchen for the school district. The 1953 building is under separate ownership from the 1924 school building and is scheduled for removal in the next 16 to 24 months.

### *East Elevation (Rear)*

The center three-fifths of this elevation projects forward to accommodate the interior gymnasium space. Several openings on this center section have been filled in with brick, though two openings remain at the northeast corner – two pairs of windows, one each on the first and second stories. The outer two bays, which are set back, feature no fenestration. The first story of the outer south bay is consumed within the 1952 addition.

### *1952 Addition*

A one-story, Modern-style addition with a rectangular footprint and flat roof connects to the southeast corner of the 1924 building. The south-facing elevation of the addition projects forward from the original building. In keeping with the original building, the addition features two colors of brick – the bottom one-third of the building is dark red brick and the top two-thirds is a lighter orange-red. The windows are metal with horizontal muntins.

Derby Public School – District 6  
Name of Property

Sedgwick County, Kansas  
County and State

The south elevation includes an inset double-door entrance accessed by three concrete steps. The doors are wood and each has three rectangular glass panels stacked atop one another. There is a clear glass transom above the doors. To the left of the entrance is a single pair of metal clerestory windows, each window with two lights divided by horizontal muntins. It includes a cast stone sill. To the right of the entrance are nine groups of 10-light metal windows with cast stone sills. The sashes are operable hoppers.

The east elevation faces Woodlawn Boulevard and includes a single entrance accessed by six concrete steps with a pipe railing. The single-door entrance is inset.

The north elevation features nine groups of 10-light metal windows with cast stone sills. The sashes are operable hoppers.

## **INTERIOR**

The interior of the 1924 building is accessed through the main double-door entrance on the west elevation. (Figures 4 and 5) A short corridor inside the main entrance terminates in the center of the building where a long perpendicular corridor bisects the building. The classroom spaces conform to a U-shaped plan on both the first and second floors, wrapping around a two-story auditorium/gymnasium that is centrally located on the east elevation. Staircases to the second floor are located at the north and south ends of the long central corridor. There is a similar central corridor on the second floor. There are 11 classrooms in all. The original interior floor plan is generally intact.

Most of the interior walls retain the original lathe and plaster. The first story floor is concrete, but is now covered with carpet and tile in most areas. The second story floor is heart pine, but only the hallway floor has been covered with carpet. A small section of the building's original slate chalkboards still exists in a second-floor museum display depicting an authentic early period school room. Another small museum display room on the second floor once served as a projection room and still contains the opening for the projector and is lined with wood paneling. This room was a part of the upper staging area of the auditorium. The hallways still have plaster ceilings but many of the classrooms have been fitted with dropped ceilings. Both of the upper and lower floors contain the original fire extinguisher wall cut outs and the fire bell and wiring is still intact. Most of the original classroom doors have been replaced. Interior changes were made in 1952 to include built-in shelving and small closets in many classrooms, which appear very similar to those originally constructed in the 1952 addition.

The building's gymnasium/auditorium is centered on the east elevation within the U-shaped classroom configuration. This space consisted of a stage area, back stage area, and a second-story balcony on the north, east and south sides of the room, accessed from the second floor corridor. The room was modified in 1952 for use only as a gymnasium and the balcony and stage were removed. The back stage area was replaced with locker rooms and showers to serve the gymnasium. Some of the windows along the east wall of the gymnasium were removed.

### *1952 Addition*

The addition is connected via a corridor extending off the southeast corner of the 1924 building. The addition has a rectangular footprint and a basic interior plan of several classrooms organized around a single central corridor. The addition retains a higher degree of its original finishes than the 1924 building including classroom doors, wood trim, square ceiling tiles, ceiling height, tile flooring, and built-in shelving and closets in the classrooms.

Derby Public School – District 6  
Name of Property

Sedgwick County, Kansas  
County and State

**8. Statement of Significance**

**Applicable National Register Criteria**

(Mark "x" in one or more boxes for the criteria qualifying the property for National Register listing.)

- A Property is associated with events that have made a significant contribution to the broad patterns of our history.
- B Property is associated with the lives of persons significant in our past.
- C Property embodies the distinctive characteristics of a type, period, or method of construction or represents the work of a master, or possesses high artistic values, or represents a significant and distinguishable entity whose components lack individual distinction.
- D Property has yielded, or is likely to yield, information important in prehistory or history.

**Criteria Considerations**

(Mark "x" in all the boxes that apply.)  
Property is:

- A Owned by a religious institution or used for religious purposes.
- B removed from its original location.
- C a birthplace or grave.
- D a cemetery.
- E a reconstructed building, object, or structure.
- F a commemorative property.
- G less than 50 years old or achieving significance within the past 50 years.

**Areas of Significance**

Education

**Period of Significance**

1923-1964

**Significant Dates**

1923, 1924, 1953, 1956

**Significant Person**

(Complete only if Criterion B is marked above.)  
N/A

**Cultural Affiliation**

N/A

**Architect/Builder**

Voigt, Samuel Siegfried (architect)  
Wichita Construction Company (builder)

**Period of Significance (justification)**

The period of significance begins in 1923 with the construction of the building and ends in 1964, the fifty-year closing date for periods of significance where activities begun historically continue to have importance but no more-specific date can be identified.

**Criteria Considerations (justification)**

N/A

Derby Public School – District 6  
Name of Property

Sedgwick County, Kansas  
County and State

---

## Narrative Statement of Significance

---

(Provide a summary paragraph that includes level of significance, applicable criteria, justification for the period of significance, and any applicable criteria considerations.)

### Summary

The Derby Public School building is nominated to the National Register of Historic Places under Criterion A for its local significance in the area of education. It is nominated as part of the *Historic Public Schools of Kansas* multiple property nomination and is an example of the Town Graded School property type.

The school building replaced a 1916 building that had burned at this location. This building was designed by Wichita architect Samuel Siegfried (S.S.) Voigt and built by Wichita Construction Company. It opened in 1924 and served Derby public school students until 1996. It was expanded in 1952 to accommodate a wave of new students whose parents worked for the growing air industry in nearby Wichita. The school is the oldest remaining public building in Derby.

---

### Elaboration

The Kansas Legislature created Sedgwick County, which had been a part of Butler County, in 1867, and Wichita was designated as the county seat of government in 1870.<sup>1</sup> Derby is located 13 miles south of Wichita and began developing around the same time as Wichita's economic boom and subsequent growth during the late 1870s and early 1880s. The early settlement of the present-day city of Derby began in 1869. During the 1870s, a ferry operated on the Arkansas River between Wichita and Derby. A blacksmith shop and grocery and drug store were soon built, securing the town's main street. In 1878, a fire burned much of the town, but it was rebuilt with several new businesses. Derby was primarily made up of residents from a rural farming community.

The town was originally named El Paso, after the town of El Paso, Illinois, from near where early resident John Hufbauer came. Around 1880, the Atchison, Topeka and Santa Fe Railway began calling the train and mail stop Derby, after railroad official C. F. Derby to avoid confusion with El Paso, Texas, which was on the same rail line.<sup>2</sup> The town name was officially changed from El Paso to Derby in 1954 when the Derby City Council voted to clear up 81 years of confusion, since many plats, abstracts and other legal documents during that time referred to the City of El Paso, Kansas, commonly known as the City of Derby, Kansas.

Derby's public school history began with the first meeting of District Number 6, held at John Hufbauer's residence on April 6, 1872, which led to the school district being officially formed. The following month the district voted to issue \$1,500 in bonds for a schoolhouse to be constructed on the northwest corner of Washington and Georgie streets. As the population grew and shifted, there was a need for a larger building to accommodate more students. In 1886, at a cost of \$2,500, a second building was built up the hill on the east side of town.<sup>3</sup> This building was used until 1915 when it was condemned after sustaining severe storm damage on November 10, 1915.<sup>4</sup> The third building was a much larger three-story brick

---

<sup>1</sup> Frank Blackmar, *Kansas: A Cyclopedia of State History, vol. 2* (Chicago: Standard Publishing Co., 1912), 662-665.

<sup>2</sup> John Rydjord, *Kanas Place-Names* (Norman: University of Oklahoma Press, 1972), 100; Sondra Van Meter McCoy and Jan Hults, *1001 Kansas Place Names* (Lawrence: University Press of Kansas, 1989), 49; Marshall S. Hiskey, "A Brief History of the City of Derby, Kansas, and A Survey of the Derby Public School System, 1936-1937" (Master's Thesis., State Teachers College of Emporia, 1938), 16.

<sup>3</sup> Collie Carlton, *Derby Mimeograph*, 30 October 1891 as quoted in Hiskey, 42.

<sup>4</sup> Hiskey, 60.

Derby Public School – District 6

Sedgwick County, Kansas

Name of Property

County and State

structure completed in 1916 at a cost of \$15,000.<sup>5</sup> A suspicious fire thought to be arson burned this building on May 31, 1923.<sup>6</sup>

The district immediately set about finding an architect (S.S. Voigt) and contractor (Wichita Construction Company) to build a new school. Construction began on the fourth building in the summer of 1923 for a cost of \$46,000. The school opened for classes in March 1924. At the time of completion, the building housed all Derby public school children in grades one through 12. It featured the latest modern conveniences including modern plumbing and electricity. Early in its history, the property included a stable for horses and later a building used for maintenance and storage for school buses.

The first real changes to the property came after World War II with the influx of residents, who came to work in Wichita's growing aviation industry. Increasing enrollment in the school district resulted in an addition to the school in 1952-1953, but the local public school infrastructure was overwhelmed by the growing number of students and required new facilities and additions throughout the 1950s. The town's first elementary schools were built during the post-war period, and a new high school was built in 1955 to address some of the problem. One article published in the September 28, 1956 *Wichita Evening Eagle* provided an excellent overview of the early 1950s growth of Derby. Author Gene Smith explained, "The proximity of Boeing Airplane Co. to Derby is the principal reason for its growth from 432 persons in 1950 to almost 5,000 this year [1956]." He provided the following statistics to illustrate the growth and its impact on Derby:

Residents in 1950: 432  
Residents in 1956: 5,000

Grade School Students in 1950: 173  
Grade School Students in 1956: 2,205

High School Students in 1950: 121  
High School Students in 1956: 650

Property Valuation in 1950: \$205,644  
Property Valuation in 1956: \$3,299,330<sup>7</sup>

Smith noted that because the Boeing Airplane Co. was located within the school district, the district could apply for government grants to ease the "building problem." The district did indeed apply for federal grants, and Congressman Edward H. Rees announced in May 1957 a federal grant of \$45,050 from the Office of Education to the Derby school district for immediate use. The money was available for maintenance and operation of both elementary and high schools in Derby.<sup>8</sup>

The community's growth continued into the 1960s and 1970s, as evidenced by newspaper headlines and new school-related construction. In the 1960s, a much larger school was built to accommodate continued growth, at which point this school served only seventh and eighth grade students, as it did until its closure in 1996. In 1972, the district erected a building immediately north of the school that added a cafeteria and lunchroom to serve the district.

---

<sup>5</sup> Ibid., 61.

<sup>6</sup> Ibid., 62.

<sup>7</sup> Gene Smith, "Once Tiny Derby Now Sedgwick County's Second Biggest Town," *Wichita Evening Eagle*, 28 September 1956.

<sup>8</sup> "Derby Schools Get U.S. Grant," *Wichita Evening Eagle*, 7 May 1957.



Derby Public School – District 6

Sedgwick County, Kansas

Name of Property

County and State

Upon closure of the school in 1996, the school district leased the building to the Derby Historical Society beginning in 1997 to be used as a museum. In 2012, the school district deeded the building and limited property to the Derby Historical Society.

Among the most successful students to have attended this school was Robert L. Kanaga, who was born in 1925 and graduated from Derby High School in 1941. During his distinguished career in the United States Air Force, Captain Kanaga was instrumental in the creation of the United States Air Force Thunderbirds, the creation of the manuals and guidelines for creating aerial displays for that would become world famous. Captain Kanaga flew the slot position in the four place formation. In 2004 Captain Robert L. Kanaga received the Kansas Governor's Aviation Honors Award and was inducted into the Kansas Aviation Hall of Fame.<sup>9</sup>

#### *Architect/Builder*

The school building architect was Wichita-based architect Samuel Siegfried Voigt. Born in Leipzig, Germany on January 29, 1885, Voigt arrived in Wichita, Kansas with his parents soon after his birth. He completed his course work in architecture in 1909. He worked for F.G. McCune as a chief draftsman.<sup>10</sup> He later went into business for himself, opening an office in 1922 at 504 Orpheum Building, in Wichita, and by 1929 he had designed at least 312 schools, 157 churches and numerous other public buildings constructed throughout the state. His work included the the Osteopathic Hospital,<sup>11</sup> the remodeling of Wichita's Shrine Temple in 1927,<sup>12</sup> Derby Public School in 1923, as well as schools in Belleville and Leon, the Anthony Theater in Harper County, and the Wolf Hotel in Ellinwood. He resided at 522 S. Broadway Avenue in Wichita, and died November 17, 1937.<sup>13</sup>

The builder was the Wichita Construction Company, with Ross Harmon serving as the principal.

#### *Town Graded School Property Type*

The Derby School is an example of the Town Graded School property type that is identified in *Historic Public Schools of Kansas* National Register multiple property documentation form, which describes the type as follows:

This category [Town Graded Schools] is inclusive of the vast majority of town schools. The only schools excluded are those built as high schools...

The town school is an evolution of the common school, traditionally built as the first school in town that was designed for graded instruction. The graded school emerged in towns across Kansas after 1900. The majority of these schools are Progressive Era Schools – Commercial Style, one- and two-story brick structures with a variety of stylistic influences. The plan forms included rectangular and T, I, and U shaped plans typically, with a central gymnasium. The graded schools typically had standard classrooms with few specialized spaces. Most graded schools have formal landscape lawns on the front and sides of the school with playgrounds and ball fields in the rear...

<sup>9</sup> Kansas Aviation Museum website <<http://www.kansasaviationmuseum.org/hall.php?GOV>> [5 November 2013].

<sup>10</sup> Kathy Morgan and Barbara Hammond, *Residential Resources of Wichita, Sedgwick County, Kansas* National Register Multiple Property Documentation Form (Topeka: Kansas Historical Society, 2008), E-48.

<sup>11</sup> *Wichita Eagle*, 14 November 1924, 2.

<sup>12</sup> *Wichita Eagle*, 4 September 1926, 1.

<sup>13</sup> "Polk's Wichita (Kansas) City Directory," (Kansas City, MO: R.L. Polk & Co. Publishers, 1937), 531.

Derby Public School – District 6

Name of Property

Sedgwick County, Kansas

County and State

The majority of graded schools was built during the Progressive Era and reflected established stylistic trends. These schools are symmetrical in façade composition with a central entrance as the dominant architectural expression. In addition to the traditional Collegiate Gothic, Colonial Revival and Classical references, a number of town schools embodied the Mission/Spanish Revival Style...<sup>14</sup>

Although the school has experienced modifications, it retains sufficient integrity to clearly convey its original function as a Town Graded School.

---

<sup>14</sup> Brenda Spencer, *Historic Public Schools of Kansas* National Register of Historic Places Multiple Property Documentation Form (Topeka, KS: Kansas Historical Society, 2004), F35.

Derby Public School – District 6  
Name of Property

Sedgwick County, Kansas  
County and State

### 9. Major Bibliographical References

**Bibliography** (Cite the books, articles, and other sources used in preparing this form.)

Blackmar, Frank. *Kansas: A Cyclopedia of State History, vol. 2*. Chicago: Standard Publishing Co., 1912.

Butterfield, Darrell. Letter to Walter L. Derby. 17 Jan. 2002.

Butterfield, Darrell. Personal Interview with author. 15 Oct. 2011.

Cutler, William G. *History of the State of Kansas*. Chicago: A.T. Andreas, 1883. Transcription accessed online at: [www.kancoll.org/books/cutler/index.html](http://www.kancoll.org/books/cutler/index.html)

Haley, Shirley, "Derby, Kansas Centennial." *Derby Daily Reporter*, 1969. Derby Historical Society Collections.

Hiskey, Marshall S. "A Brief History of the City of Derby, Kansas, and A Survey of the Derby Public School System, 1936-1937." Master's Thesis, State Teachers College of Emporia, 1938.

Kansas Aviation Museum website <<http://www.kansasaviationmuseum.org/hall.php?GOV>> [5 November 2013].

May, Silas. "Derby High School History". Video Transcript. November, 2010. Derby Historical Society Collections.

McCoy, Sondra Van Meter, and Jan Hults. *1001 Kansas Place Names*. Lawrence: University Press of Kansas, 1989.

Morgan, Kathy, and Barbara Hammond. *Residential Resources of Wichita, Sedgwick County, Kansas National Register Multiple Property Documentation Form*. Topeka, KS: Kansas Historical Society, 2008. Accessed online at: [http://kshs.org/resource/national\\_register/MPS/Residential\\_Resources\\_of\\_WichitaDRAFT\\_mps.pdf](http://kshs.org/resource/national_register/MPS/Residential_Resources_of_WichitaDRAFT_mps.pdf)

Rydjord, John. *Kanas Place-Names*. Norman: University of Oklahoma Press, 1972.

Spencer, Brenda. *Historic Public Schools of Kansas National Register Multiple Property Documentation Form*. Topeka, KS: Kansas Historical Society, 2005. Accessed online at: [http://kshs.org/resource/national\\_register/MPS/Historic\\_Public\\_Schools\\_Kansas\\_mps.pdf](http://kshs.org/resource/national_register/MPS/Historic_Public_Schools_Kansas_mps.pdf)

**Previous documentation on file (NPS):**

- preliminary determination of individual listing (36 CFR 67 has been requested)
- previously listed in the National Register
- previously determined eligible by the National Register
- designated a National Historic Landmark
- recorded by Historic American Buildings Survey # \_\_\_\_\_
- recorded by Historic American Engineering Record # \_\_\_\_\_
- recorded by Historic American Landscape Survey # \_\_\_\_\_

**Primary location of additional data:**

- State Historic Preservation Office
  - Other State agency
  - Federal agency
  - Local government
  - University
  - Other
- Name of repository: \_\_\_\_\_

Historic Resources Survey Number (if assigned):   N/A  

---

### 10. Geographical Data

---

Derby Public School – District 6  
Name of Property

Sedgwick County, Kansas  
County and State

**Acreege of Property** 0.86 acres

**Provide latitude/longitude coordinates OR UTM coordinates.**  
(Place additional coordinates on a continuation page.)

**Latitude/Longitude Coordinates**

Datum if other than WGS84: \_\_\_\_\_  
(enter coordinates to 6 decimal places)

1	<u>37.544804</u> Latitude:	<u>-97.262848</u> Longitude:	3	_____ Latitude:	_____ Longitude:
2	_____ Latitude:	_____ Longitude:	4	_____ Latitude:	_____ Longitude:

**Verbal Boundary Description** (describe the boundaries of the property)

A tract of land located in the NE quarter (NE ¼) of the NE quarter (NE ¼) of section 12, township 29 S, range 1 E of the sixth P.M. Sedgwick County, KS, more particularly described as follows:

Commencing at the NE corner of section 12, township 29 S, range 1 E, thence S 00 00'00"  
W along the E line of said S section 12, a distance of 1070.94 ft; thence N 88 45'05" W a distance of 30.00 ft to the  
POINT OF BEGINNING; thence N 88 45'05" W a distance of 229.00 ft, thence S 00 00'00" W a distance of 145.00 ft;  
thence S 88 45'05" E a BEGINNING, said tract containing 0>76 acres, more or less.

**Boundary Justification** (explain why the boundaries were selected)

This is the boundary that includes the original two-story building and the earliest addition as well as a small amount of land around the perimeter.

**11. Form Prepared By**

name/title Charles W. Hubbard

organization Derby Historical Society date October 1, 2013

street & number PO Box 1054 telephone \_\_\_\_\_

city or town Derby state KS zip code 67037

e-mail cwhrh@cox.net

**Property Owner:** (complete this item at the request of the SHPO or FPO)

name Derby Historical Society

street & number PO Box 1054 telephone \_\_\_\_\_

city or town Derby state Ks zip code 67037

Derby Public School – District 6  
Name of Property

Sedgwick County, Kansas  
County and State

**Paperwork Reduction Act Statement:** This information is being collected for applications to the National Register of Historic Places to nominate properties for listing or determine eligibility for listing, to list properties, and to amend existing listings. Response to this request is required to obtain a benefit in accordance with the National Historic Preservation Act, as amended (16 U.S.C.460 et seq.).

**Estimated Burden Statement:** Public reporting burden for this form is estimated to average 100 hours per response including time for reviewing instructions, gathering and maintaining data, and completing and reviewing the form. Direct comments regarding this burden estimate or any aspect of this form to the Office of Planning and Performance Management, U.S. Dept. of the Interior, 1849 C. Street, NW, Washington, DC.

---

### Additional Documentation

---

Submit the following items with the completed form:

#### Photographs

Submit clear and descriptive photographs. The size of each digital image must be 1600x1200 pixels (minimum), at 300 ppi (pixels per inch) or larger. Key all photographs to a sketch map or aerial map. Each photograph must be numbered and that number must correspond to the photograph number on the photo log. For simplicity, the name of the photographer, photo date, etc. may be listed once on the photograph log and doesn't need to be labeled on every photograph.

#### Photograph Log

Name of Property: Derby School – District 6

City or Vicinity: Derby

County: Sedgwick State: Kansas

Photographer: Sarah Martin

Date  
Photographed: 7 May 2014

Description of Photograph(s) and number, include description of view indicating direction of camera:

- 1 of 14: Primary (west) façade, camera facing E
- 2 of 14: Primary (west) entrance, camera facing E
- 3 of 14: South side of building with 1952 addition at right, camera facing NE
- 4 of 14: South side of 1952 addition, camera facing NE
- 5 of 14: East and north sides of 1952 addition, camera facing SW
- 6 of 14: East side of 1924 school with 1952 addition at left, camera facing W
- 7 of 14: Corner stone, at SW corner of building, camera facing N
- 8 of 14: Interior, first floor central corridor, camera facing N
- 9 of 14: Interior, second floor central corridor, camera facing N
- 10 of 14: Interior, second floor classroom, camera facing SW
- 11 of 14: Interior, second floor classroom, camera facing N
- 12 of 14: Interior, gymnasium/auditorium, camera facing N
- 13 of 14: Interior (1952 addition) central corridor, camera facing E
- 14 of 14: Interior (1952 addition) classroom, camera facing W

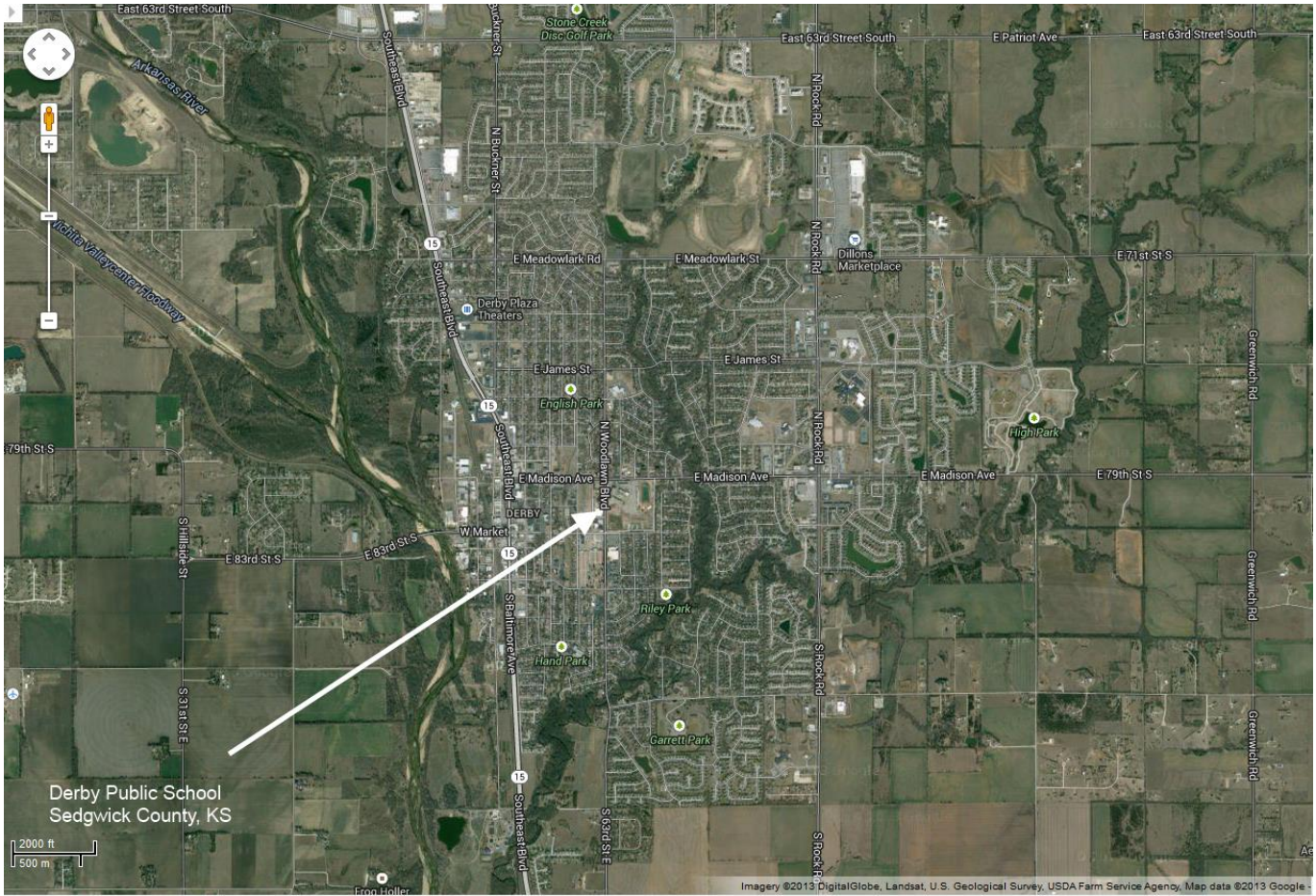
#### Figures

Include GIS maps, figures, scanned images below.

Derby Public School – District 6  
Name of Property

Sedgwick County, Kansas  
County and State

Figure 1: Contextual Aerial Image, Google Maps, 2013.



Derby Public School – District 6  
Name of Property

Sedgwick County, Kansas  
County and State

Figure 2: Close-in Aerial Image, Google Maps, 2013.



Derby Public School – District 6  
Name of Property

Sedgwick County, Kansas  
County and State

**Figure 3: Historic Image of School – shortly after construction (c. 1923)**





Derby Public School – District 6  
Name of Property

Sedgwick County, Kansas  
County and State

Figure 4: First Floor Plan – Showing functions of Rooms during school use.

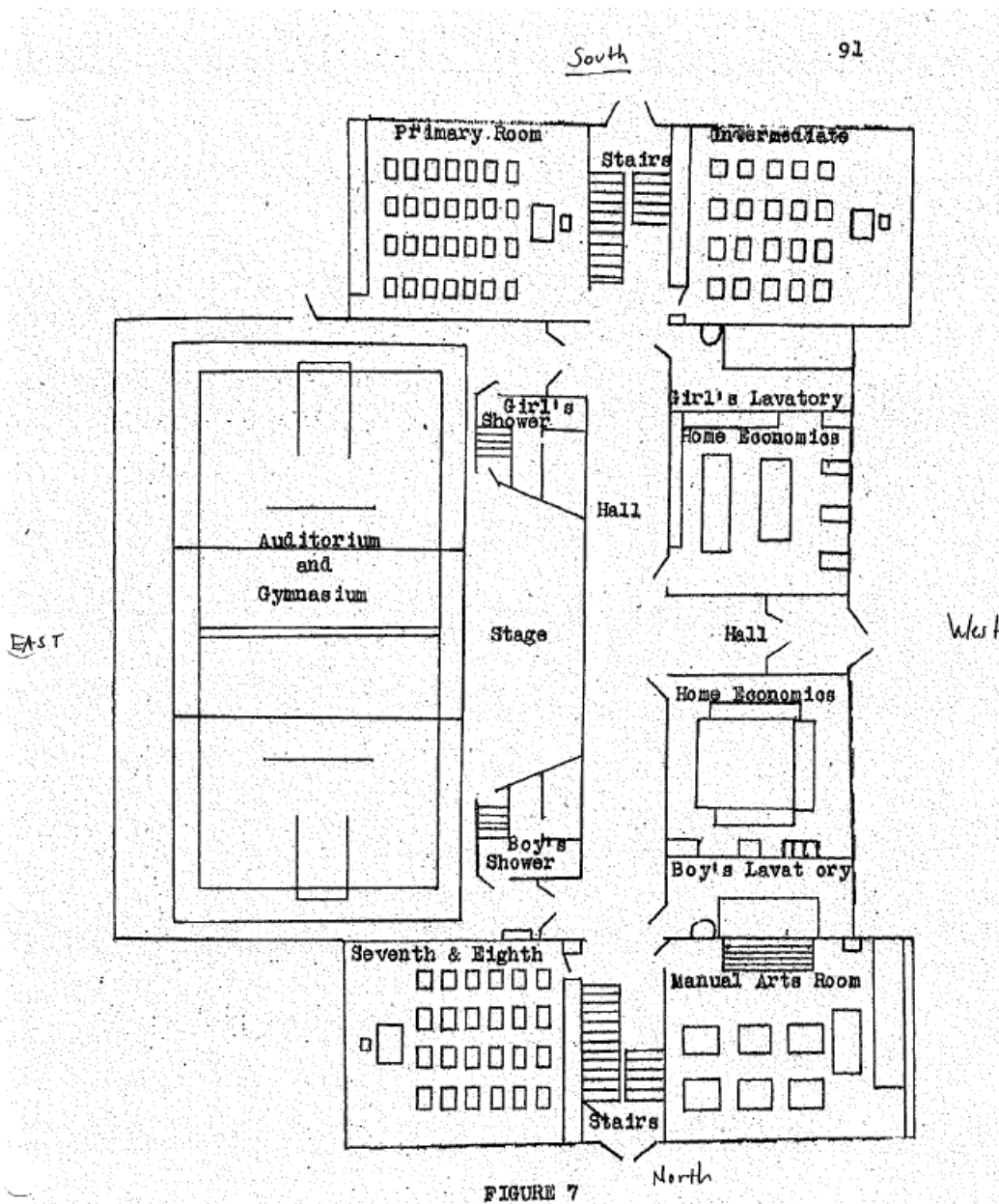
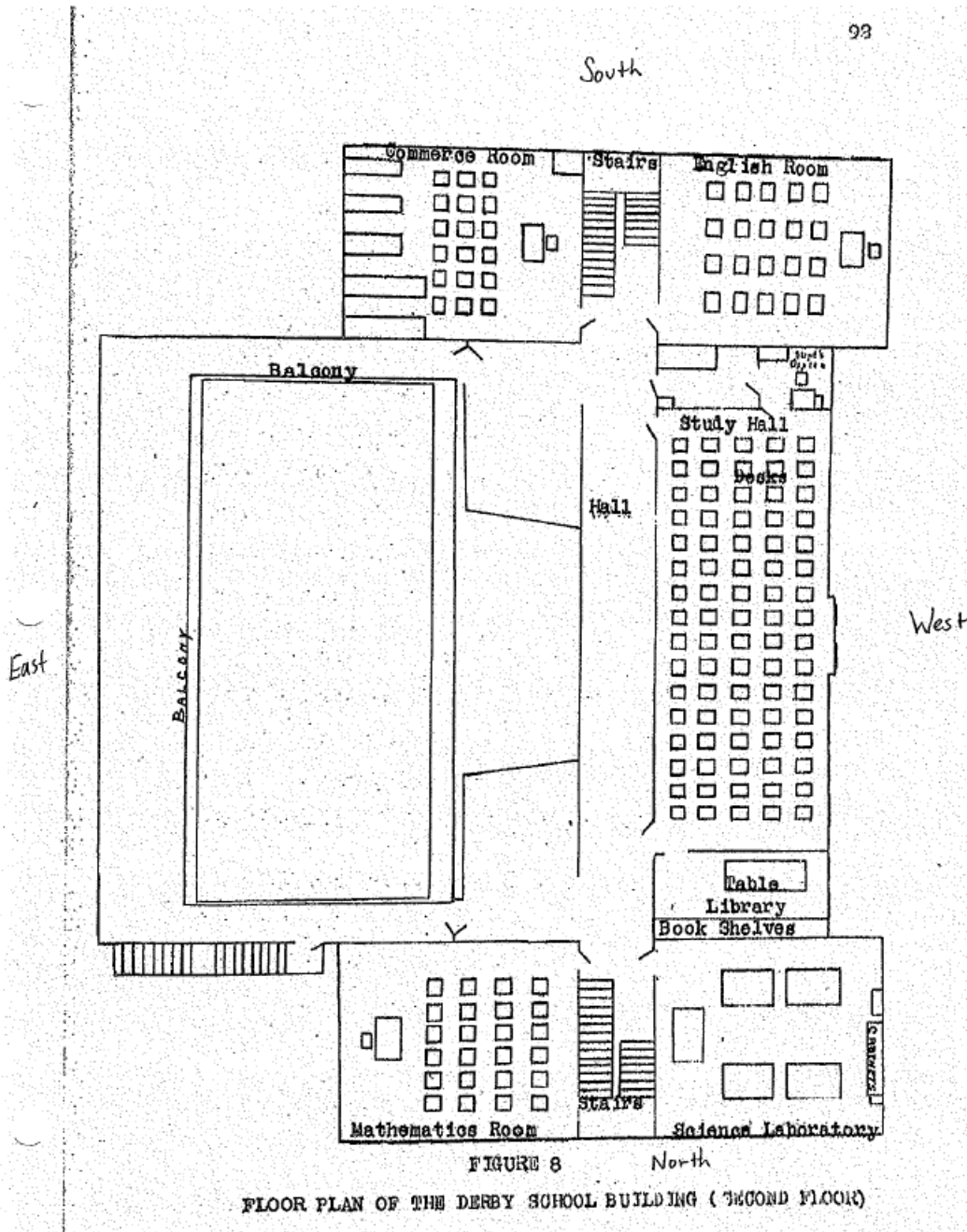


FIGURE 7  
FLOOR PLAN OF THE DERBY SCHOOL BUILDING (FIRST FLOOR)

Derby Public School – District 6  
Name of Property

Sedgwick County, Kansas  
County and State

Figure 4: Second Floor Plan – Showing functions of Rooms during school use.







PUBLIC SCHOOL

31



Derby Historical Society  
&  
Museum









S. S. VOIGT ARCHT.

WICHITA CONST. CO.

CONTRACTOR





Remodeling and  
Clean Up in  
Progress

Please excuse  
the mess!







KANSAS OR BUST

FOSSILS OF



HELP OUR BOYS  
BOYS CLUB OF DERBY





UNITED STATES DEPARTMENT OF THE INTERIOR  
NATIONAL PARK SERVICE

NATIONAL REGISTER OF HISTORIC PLACES  
EVALUATION/RETURN SHEET

REQUESTED ACTION: NOMINATION

PROPERTY Derby Public School--District 6  
NAME:

MULTIPLE Public Schools of Kansas MPS  
NAME:

STATE & COUNTY: KANSAS, Sedgwick

DATE RECEIVED: 8/22/14 DATE OF PENDING LIST: 9/23/14  
DATE OF 16TH DAY: 10/08/14 DATE OF 45TH DAY: 10/08/14  
DATE OF WEEKLY LIST:

REFERENCE NUMBER: 14000832

REASONS FOR REVIEW:

APPEAL: N DATA PROBLEM: N LANDSCAPE: N LESS THAN 50 YEARS: N  
OTHER: N PDIL: N PERIOD: N PROGRAM UNAPPROVED: N  
REQUEST: N SAMPLE: N SLR DRAFT: N NATIONAL: N

COMMENT WAIVER: N

ACCEPT  RETURN  REJECT OCT - 8 2014 DATE

ABSTRACT/SUMMARY COMMENTS:

**Entered in  
The National Register  
of  
Historic Places**

RECOM./CRITERIA \_\_\_\_\_

REVIEWER \_\_\_\_\_ DISCIPLINE \_\_\_\_\_

TELEPHONE \_\_\_\_\_ DATE \_\_\_\_\_

DOCUMENTATION see attached comments Y/N see attached SLR Y/N

If a nomination is returned to the nominating authority, the nomination is no longer under consideration by the NPS.



Sam Brownback, Governor  
Jennie Chinn, Executive Director

August 18, 2014

Carol Shull  
National Register of Historic Places  
National Park Service  
1201 Eye Street, N. W.  
8<sup>th</sup> Floor (MS 2280)  
Washington, DC 20005

Re: National Register Nominations – new submissions

Dear Ms. Shull:

We are pleased to submit for your consideration the following National Register documents:

- **Schwartz, Alexander & Anna, Farm – Lane County (new nomination)**
  - Enclosed: Signed copy of nomination and 3 disks (with nomination, GIS, and photo files)
  - The enclosed disk #1 contains the true and correct copy of the nomination.
- **First Congregational Church – Montgomery County (new nomination)**
  - Enclosed: Signed copy of nomination and 2 disks (with nomination, GIS, and photo files)
  - The enclosed disk #1 contains the true and correct copy of the nomination.
- **Whitewater Falls Stock Farm – Butler County (new nomination)**
  - Enclosed: Signed copy of nomination and 3 disks (with nomination, GIS, and photo files)
  - The enclosed disk #1 contains the true and correct copy of the nomination.
- **Martin, Handel T., House – Douglas County (new nomination)**
  - Enclosed: Signed copy of nomination and 2 disks (with nomination, GIS, and photo files)
  - The enclosed disk #1 contains the true and correct copy of the nomination.
- **Derby Public School – District 6 – Sedgwick County (new nomination)**
  - Enclosed: Signed copy of nomination and 2 disks (with nomination, GIS, and photo files)
  - The enclosed disk #1 contains the true and correct copy of the nomination.

- **Masonic Grand Lodge Building – Shawnee County (new nomination)**
  - Enclosed: Signed copy of nomination and 2 disks (with nomination, GIS, and photo files)
  - The enclosed disk #1 contains the true and correct copy of the nomination.

Please do not hesitate to contact me if you have any questions. I may be reached at 785-272-8681 ext. 216 or [smartin@kshs.org](mailto:smartin@kshs.org).

Sincerely yours,



Sarah J. Martin  
National Register Coordinator

Enclosures