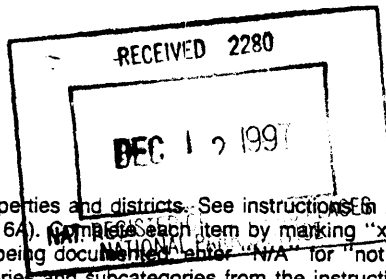


United States Department of the Interior
National Park Service

National Register of Historic Places
Registration Form



1035

This form is for use in nominating or requesting determinations for individual properties and districts. See instructions in *How to Complete the National Register of Historic Places Registration Form* (National Register Bulletin 16A). Complete each item by marking "x" in the appropriate box or by entering the information requested. If an item does not apply to the property being documented, enter "N/A" for "not applicable." For functions, architectural classification, materials, and areas of significance, enter only categories and subcategories from the instructions. Place additional entries and narrative items on continuation sheets (NPS Form 10-900a). Use a typewriter, word processor, or computer, to complete all items.

1. Name of Property

historic name PASO ROBLES CARNEGIE LIBRARY

RECEIVED

other names/site number _____

2. Location

street & number City Park, 800 "12th" Street

OHP
 not for publication

city or town Paso Robles

vicinity

state California code CA county San Luis Obispo code 079 zip code 93446

3. State/Federal Agency Certification

As the designated authority under the National Historic Preservation Act, as amended, I hereby certify that this nomination request for determination of eligibility meets the documentation standards for registering properties in the National Register of Historic Places and meets the procedural and professional requirements set forth in 36 CFR Part 60. In my opinion, the property meets does not meet the National Register criteria. I recommend that this property be considered significant nationally statewide locally. (See continuation sheet for additional comments.)

Harold Abeysa 11-25-97
Signature of certifying official/Title Date

California Office of Historic Preservation
State of Federal agency and bureau

In my opinion, the property meets does not meet the National Register criteria. (See continuation sheet for additional comments.)

Signature of commenting official/Title Date

State or Federal agency and bureau

4. National Park Service Certification

I hereby certify that the property is:

- entered in the National Register.
 - See continuation sheet.
- determined eligible for the National Register
 - See continuation sheet.
- determined not eligible for the National Register.
- removed from the National Register.
- other, (explain:)

Paul R. Ferguson 1/26/98
Signature of the Keeper Date of Action

5. Classification

Ownership of Property
(Check as many boxes as apply)

- private
- public-local
- public-State
- public-Federal

Category of Property
(Check only one box)

- building(s)
- district
- site
- structure
- object

Number of Resources within Property
(Do not include previously listed resources in the count.)

Contributing	Noncontributing	
1		buildings
		sites
		structures
		objects
1	0	Total

Name of related multiple property listing
(Enter "N/A" if property is not part of a multiple property listing.)

California Carnegie Libraries

Number of contributing resources previously listed
in the National Register

6. Function or Use

Historic Functions
(Enter categories from instructions)

Education: Library

Current Functions
(Enter categories from instructions)

Education: Library

Social: Meeting Hall

7. Description

Architectural Classification
(Enter categories from instructions)

Classical Revival

Materials
(Enter categories from instructions)

foundation concrete

walls brick

stone

roof asphalt

other

Narrative Description

(Describe the historic and current condition of the property on one or more continuation sheets.)

United States Department of the Interior
National Park Service

National Register of Historic Places

Continuation Sheet

Section 7 Page 1

Paso Robles Carnegie Library
San Luis Obispo County, CA

The charming brick and stone Carnegie Library is situated in the center of the Paso Robles City Park bounded by Eleventh and Twelfth, Spring and Pine Streets. The single story, slate roofed building sits atop a concrete basement. The brick which serves as the main building material was locally fired. A broad staircase leads up to double doors flanked by large decorative columns.

Paso Robles' Carnegie Library is an example of the Classical Revival in which the projecting central element is pedimented, supported by a pair of columns and wide pilasters. Pediment and cornice are emphasized by a decorative frieze, and the center of the pediment is filled with ornamentation which is replicated on the pilasters. One story over a raised basement, and under a low hipped roof, the building is rectangular, except for a small extension to the rear. It is faced in brick in running pattern, with stone quoins alongside the windows and at pilaster and building corners. The windows, a pair on either side of the portico, double hung and under a transom, are further defined with stone lintels and sills. Below each a pair of basement windows pierces the concrete basement walls, and a basement entrance is adjacent to the main stairs. A broad walk leads from the street to the building, where steps rise to the portico and the recessed entrance with wood framed plate glass doors.

Composition shingle has been substituted for the original slate roof. Also in 1939 the projection to the rear was extended slightly. The work was accomplished under the WPA and was well integrated with the rest of the building.

The interior appears virtually unchanged. The interior boasts tiled floors, varnished wood paneling, large windows and a brick fireplace.

The building is enhanced by its setting in the center of City Park, a full city block also containing large old magnolias, valley oaks, a small children's playground, and a bandstand. Down the street may be seen the historic buildings of old Paso Robles.

8. Statement of Significance

Applicable National Register Criteria

(Mark "x" in one or more boxes for the criteria qualifying the property for National Register listing.)

- A Property is associated with events that have made a significant contribution to the broad patterns of our history.
- B Property is associated with the lives of persons significant in our past.
- C Property embodies the distinctive characteristics of a type, period, or method of construction or represents the work of a master, or possesses high artistic values, or represents a significant and distinguishable entity whose components lack individual distinction.
- D Property has yielded, or is likely to yield, information important in prehistory or history.

Criteria Considerations

(Mark "x" in all the boxes that apply.)

Property is:

- A owned by a religious institution or used for religious purposes.
- B removed from its original location.
- C a birthplace or grave.
- D a cemetery.
- E a reconstructed building, object, or structure.
- F a commemorative property.
- G less than 50 years of age or achieved significance within the past 50 years.

Narrative Statement of Significance

(Explain the significance of the property on one or more continuation sheets.)

9. Major Bibliographical References

Bibliography

(Cite the books, articles, and other sources used in preparing this form on one or more continuation sheets.)

Previous documentation on file (NPS):

- preliminary determination of individual listing (36 CFR 67) has been requested
- previously listed in the National Register
- previously determined eligible by the National Register
- designated a National Historic Landmark
- recorded by Historic American Buildings Survey # _____
- recorded by Historic American Engineering Record # _____

Areas of Significance

(Enter categories from instructions)

Social History

Period of Significance

1908-1947

Significant Dates

Significant Person

(Complete if Criterion B is marked above)

Cultural Affiliation

Architect/Builder

Weeks, W.H. Architect

Summers, R.O. Builder

Name of repository:

10. Geographical Data

Acreage of Property less than one

UTM References

(Place additional UTM references on a continuation sheet.)

1	1 0	7 0 9 3 0 5	3 9 4 4 7 2 6
	Zone	Easting	Northing
2			

3			
	Zone	Easting	Northing
4			

See continuation sheet

Verbal Boundary Description

(Describe the boundaries of the property on a continuation sheet.)

Boundary Justification

(Explain why the boundaries were selected on a continuation sheet.)

11. Form Prepared By

name/title Vicki Dauth and Anne Sefton

organization El Paso de Robles Area Historical Society date July, 1997

street & number P.O. Box 2875 telephone (805) 238-4996

city or town Paso Robles state CA zip code 93446

Additional Documentation

Submit the following items with the completed form:

Continuation Sheets

Maps

A USGS map (7.5 or 15 minute series) indicating the property's location.

A Sketch map for historic districts and properties having large acreage or numerous resources.

Photographs

Representative black and white photographs of the property.

Additional items

(Check with the SHPO or FPO for any additional items)

Property Owner

(Complete this item at the request of SHPO or FPO.)

name City of Paso Robles

street & number 1100 Spring Street telephone (805) 237-3888

city or town Paso Robles state CA zip code 93446

Paperwork Reduction Act Statement: This information is being collected for applications to the National Register of Historic Places to nominate properties for listing or determine eligibility for listing, to list properties, and to amend existing listings. Response to this request is required to obtain a benefit in accordance with the National Historic Preservation Act, as amended (16 U.S.C. 470 et seq.).

Estimated Burden Statement: Public reporting burden for this form is estimated to average 18.1 hours per response including time for reviewing instructions, gathering and maintaining data, and completing and reviewing the form. Direct comments regarding this burden estimate or any aspect of this form to the Chief, Administrative Services Division, National Park Service, P.O. Box 37127, Washington, DC 20013-7127; and the Office of Management and Budget, Paperwork Reductions Projects (1024-0018), Washington, DC 20503.

United States Department of the Interior
National Park Service

National Register of Historic Places Continuation Sheet

Section 8 Page 1

Paso Robles Carnegie Library
San Luis Obispo County, CA

The Paso Robles Carnegie Library meets the National Register eligibility requirements set forth in the Multiple Property nomination, California Carnegie Libraries.

The library's history dates from a 1901 free reading room and library formed by Paso Robles Improvement Club, a men's group. The following year the Club asked its ladies' auxiliary to take over the library for them. Later the women in turn asked the city to assume responsibility for the library, which it did on November 2, 1903, with an ordinance establishing a free public library.

The ladies next urged the trustees to seek Carnegie funds and \$10,000 was offered on December 13, 1906. The grant was contingent upon the city providing a suitable site and \$1,000 per year to maintain the library. Upon receipt of the grant, the Paso Robles Library Board entered into an agreement with William H. Weeks to design the library building. Plans were finalized and construction by R.O. Summers began in late 1907. The cornerstone was laid and the library was dedicated with much fanfare on June 19, 1908.

Architect Weeks also designed several other structures in Paso Robles at about the same time. One, originally the Municipal Bath House, has been well preserved and now contains offices. Weeks also designed the San Luis Obispo Carnegie, the only other Carnegie library in the county. That library is still standing.

The Paso Robles Library stands as both a physical and symbolic center to the community. Many local residents have fond memories of the library with its cozy fireplace, sunny windows, and stacks and stacks of books. By 1980, however, the library was outgrowing its quaint little building. In 1995, through overwhelming community support much like that which supported the construction of the Carnegie, a new Paso Robles library was dedicated.

The City has since turned over the stewardship of the Carnegie Library to the El Paso de Robles Area Historical Society. The organization has already put into

United States Department of the Interior
National Park Service

National Register of Historic Places
Continuation Sheet

Section 8 Page 2

Paso Robles Carnegie Library
San Luis Obispo County, CA

motion plans to preserve the building as a historical library and repository for items of local historic interest. Every effort is being made to insure the preservation of the integrity of our community's little jewel, the Carnegie Library.

United States Department of the Interior
National Park Service

National Register of Historic Places Continuation Sheet

Section Photos Page 1

Information Common to all photographs:

Name of Photographer: Richard Ross

Date of Photo: July 29, 1997

Negative Location: Law Offices of Stephen B. Sefton
530 Tenth Street
Paso Robles, CA 93446

United States Department of the Interior
National Park Service

National Register of Historic Places Continuation Sheet

Section 9, 10, Page 1

Paso Robles Carnegie Library
San Luis Obispo County, CA

Bibliography:

Bobinski, George S., Carnegie Libraries: *Their History and Impact on American Public Library Development*, Chicago, American Library Association, 1969.

Carnegie Library Project Form: Ann F. Martin, City Librarian, Paso Robles Public Library.

"Inception and Progress of Paso Robles Library," *Paso Robles Leader*, 1/29/08.

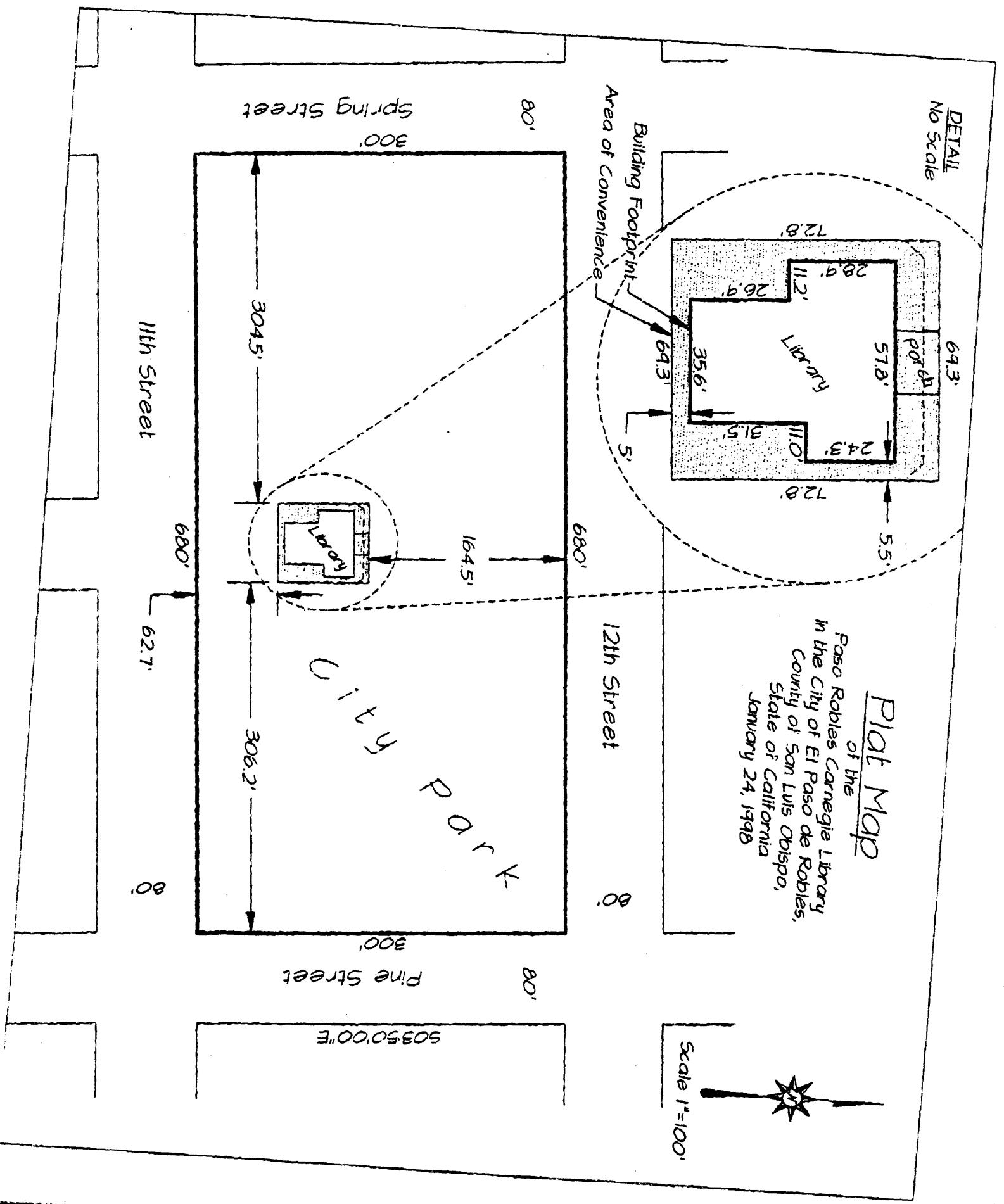
"Pioneer Pages," El Paso de Robles Area Pioneer Museum, 1996.

Boundary Description:

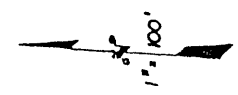
The boundaries are delineated on the enclosed map.

Boundary Justification:

The boundary is one of convenience, drawn to encompass the historic property and its immediate setting.

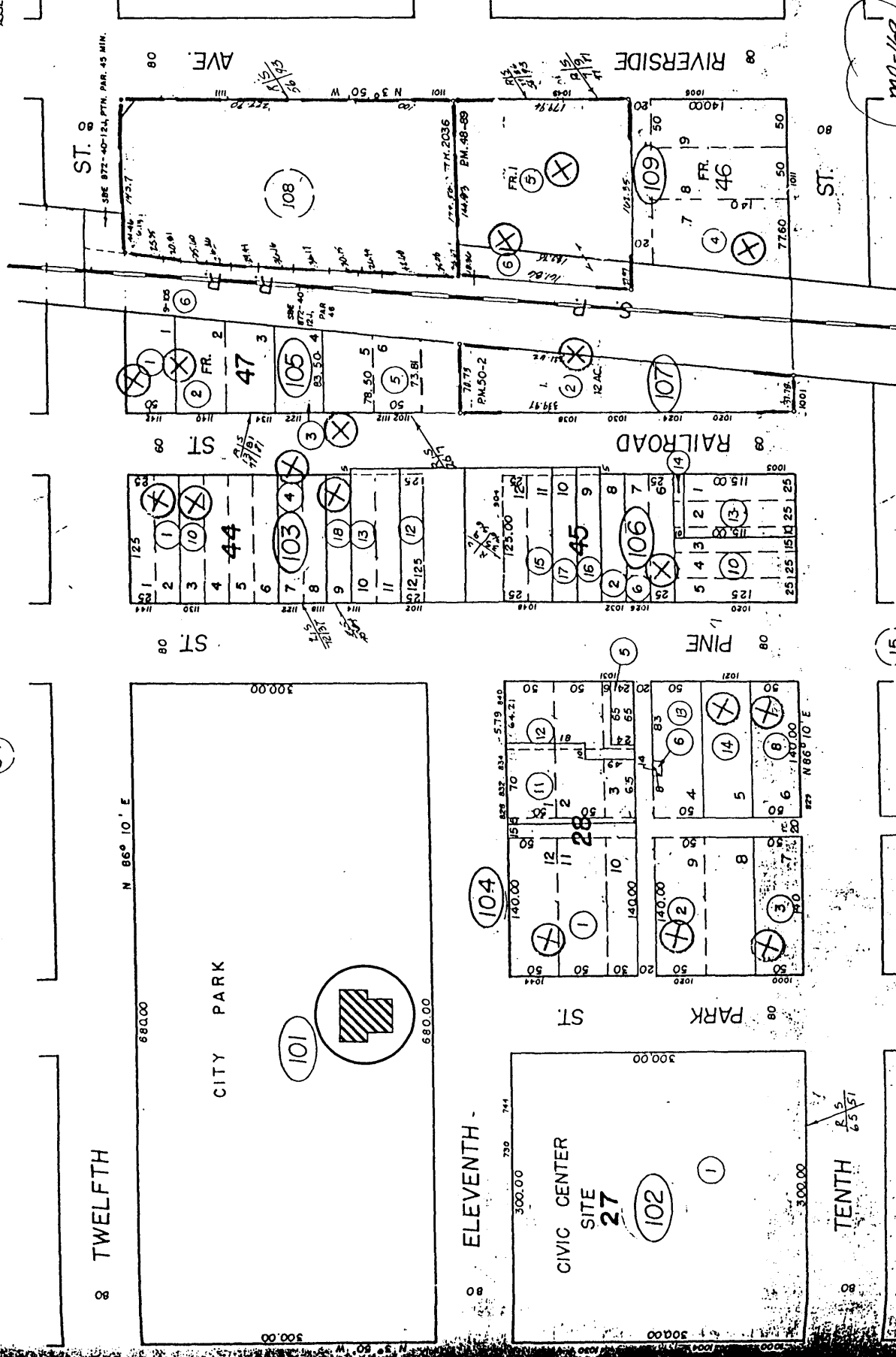


THIS MAP IS PREPARED FOR ASSESSMENT PURPOSES ONLY



PASO ROBLES CARNEGIE LIBRARY
San Luis Obispo County CA
SKETCH MAP

CITY OF EL PASO DE ROBLES
SAN LUIS OBISPO COUNTY
CALIFORNIA



MA-169

NOV 22 1996
5:15-11 23-42 1-10-93
7-28-87 9-17-87 5-16-92 5-23-96
2-2-87 1-30-91 6-23-92 10-25-96

04

15

11

ELEVENTH

TWELFTH

TENTH

PARK ST

PINE ST

RAILROAD ST

ST. 88

ST. 88

AVE. 80

RIVERSIDE 88

