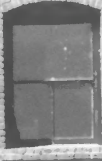
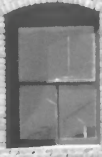


I.O.O.F.



GIFTS  
CHOCOLATE  
ICE CREAM

HWY 68



1. IOOF Lodge #355  
18819 East State Highway 88  
Clements, CA
2. San Joaquin Co., Calif.
3. Sarah Sutherland
4. June 2006
5. Chocoholics Divine Desserts  
18819 E. State Highway 88  
Clements, CA
6. Camera facing north
7. Photo #1



*Coca-Cola*  
BOTTLED EVERYWHERE  
FACTORY STORE & TOURS

I.C.O.P.

GARY

1. IOOF Lodge #355  
18819 East State Highway 88  
Clements, CA
2. San Joaquin County, Calif
3. Sarah Sutherland
4. June 2006
5. Chocoholics Divine Desserts  
18819 East. State Highway 88  
Clements, CA
6. Camera facing east
7. Photo #2



1. IOOF Lodge #355  
18819 East State Highway 88  
Clements, CA
2. San Joaquin County, Calif.
3. Sarah Sutherland
4. June 2006
5. Chocoholics Divine Desserts  
18819 E. State Highway 88  
Clements, CA
6. Camera facing south
7. Photo #3



1. IOOF Lodge #355  
18819 East State Highway 88  
Clements, CA
2. San Joaquin County, Calif.
3. Sarah Sutherland
4. June 2006
5. Chocoholics Divine Desserts  
18819 E. State Highway 88  
Clements, CA
6. Camera facing west
7. Photo #4





- IOOF Lodge #355
- 18819 East Highway 88
- Clements, CA 95227
- San Joaquin County
- photo by Sarah Sutherland
- 6/22/06
- North Direction

Photograph A



- IOOF Lodge #355
  - 18819 East Highway 88  
Clements, CA 95227
  - San Joaquin County
  - Photo by Sarah Sutherland
  - 6122106
  - South Direction
- Photograph B



I.O.O.F LODGE # 355

PICTURE TAKEN HEADING NORTH

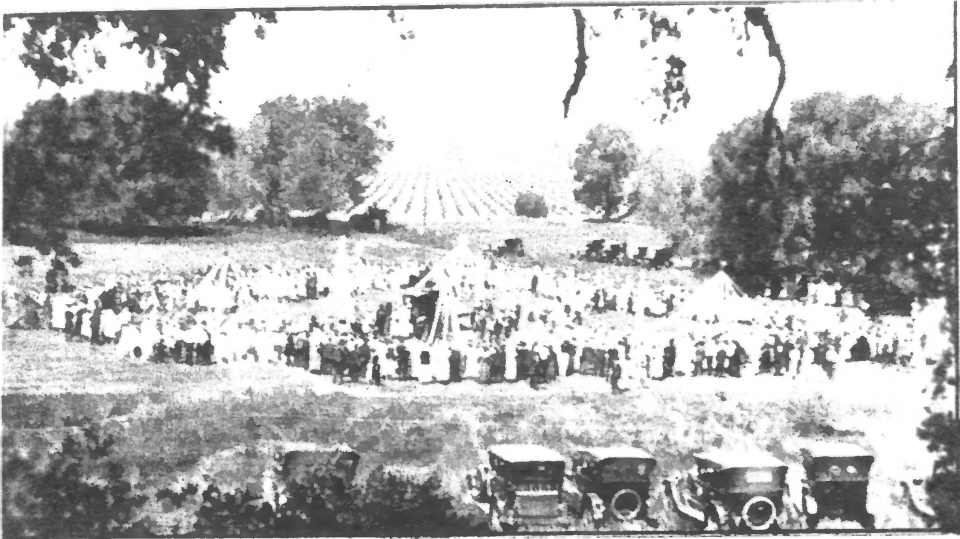
PHOTOGRAPHER UNKNOWN

DATE OF PICTURE UNKNOWN

18819 E. Hwy 88

Clements, CA 95227

Photograph C



*The Clements Community May Day Picnic with the May Poles seen in the background.  
(Lois Maitia collection.)*

100F Lodge #355

Clements, San Joaquin County

Photograph D





*The Clements Community May Day Picnic*

*(Lois Maitia collection.)*

100F Lodge #355

Clements, San Joaquin County

Photograph E