



101 Ranch Historic District (Blacksmith Shop), Marland, Oklahoma
Photo by Peavler and Associates for ABC and NPS, 1974



101 Ranch Hand Historic District (Bill Pickett's Grave and White Eagle Monument),
Marland, Oklahoma. Photo by Peavler & Associates for ABC and NPS, 1974



STATE	Oklahoma
COUNTY	Kay
FOR NPS USE ONLY	
ENTRY NUMBER	DATE

NATIONAL REGISTER OF HISTORIC PLACES

PROPERTY PHOTOGRAPH FORM

(Type all entries - attach to or enclose with photograph)

S
E
E
I
N
S
T
R
U
C
T
I
O
N
S

1. NAME

COMMON: 101 Ranch Historic District - Hotel Ruins

AND/OR HISTORIC:

2. LOCATION

STREET AND NUMBER:
13 Miles Southwest of Ponca City on Ok. State Hwy. 156

CITY OR TOWN:
Marland

STATE:	CODE	COUNTY:	CODE
Oklahoma	40	Kay	071

3. PHOTO REFERENCE

PHOTO CREDIT: Peavler and Associates

DATE OF PHOTO: August 1974

NEGATIVE FILED AT:
Peavler and Associates, Oklahoma City

4. IDENTIFICATION

DESCRIBE VIEW, DIRECTION, ETC.

Hotel Ruins



**NATIONAL REGISTER OF HISTORIC PLACES
PROPERTY PHOTOGRAPH FORM**

(Type all entries - attach to or enclose with photograph)

STATE Oklahoma	
COUNTY Kay	
FOR NPS USE ONLY	
ENTRY NUMBER	DATE

SEE INSTRUCTIONS

1. NAME

COMMON: 101 Ranch Historic District - White House Ruins
AND/OR HISTORIC:

2. LOCATION

STREET AND NUMBER:
13 Miles Southwest of Ponca City on Ok. State Hwy. 156

CITY OR TOWN:
Marland

STATE: Oklahoma	CODE 40	COUNTY: Kay	CODE 071
--------------------	------------	----------------	-------------

3. PHOTO REFERENCE

PHOTO CREDIT: Peavler and Associates

DATE OF PHOTO: August 1974

NEGATIVE FILED AT:
Peavler and Associates, Oklahoma City

4. IDENTIFICATION

DESCRIBE VIEW, DIRECTION, ETC.
White House ruins.



Cate

101 Ranch Historic District
13 Miles SW of Ponca City
on Ok. St. Hwy 156.

Marland, Okla. Ray City

~~Peavler and Associates,~~
Oklahoma City

Date: August, 1974

Identification: Front-Side
View



101 Ranch Historic District (Horse Barn), Marland, Oklahoma
Photo by Peavler and Associates for ABC and NPS, 1974

**NATIONAL REGISTER OF HISTORIC PLACES
PROPERTY PHOTOGRAPH FORM**

(Type all entries - attach to or enclose with photograph)

STATE Oklahoma	
COUNTY Kay	
FOR NPS USE ONLY	
ENTRY NUMBER	DATE

SEE INSTRUCTIONS

1. NAME

COMMON: 101 Ranch Historic District - Horse Barn
AND/OR HISTORIC:

2. LOCATION

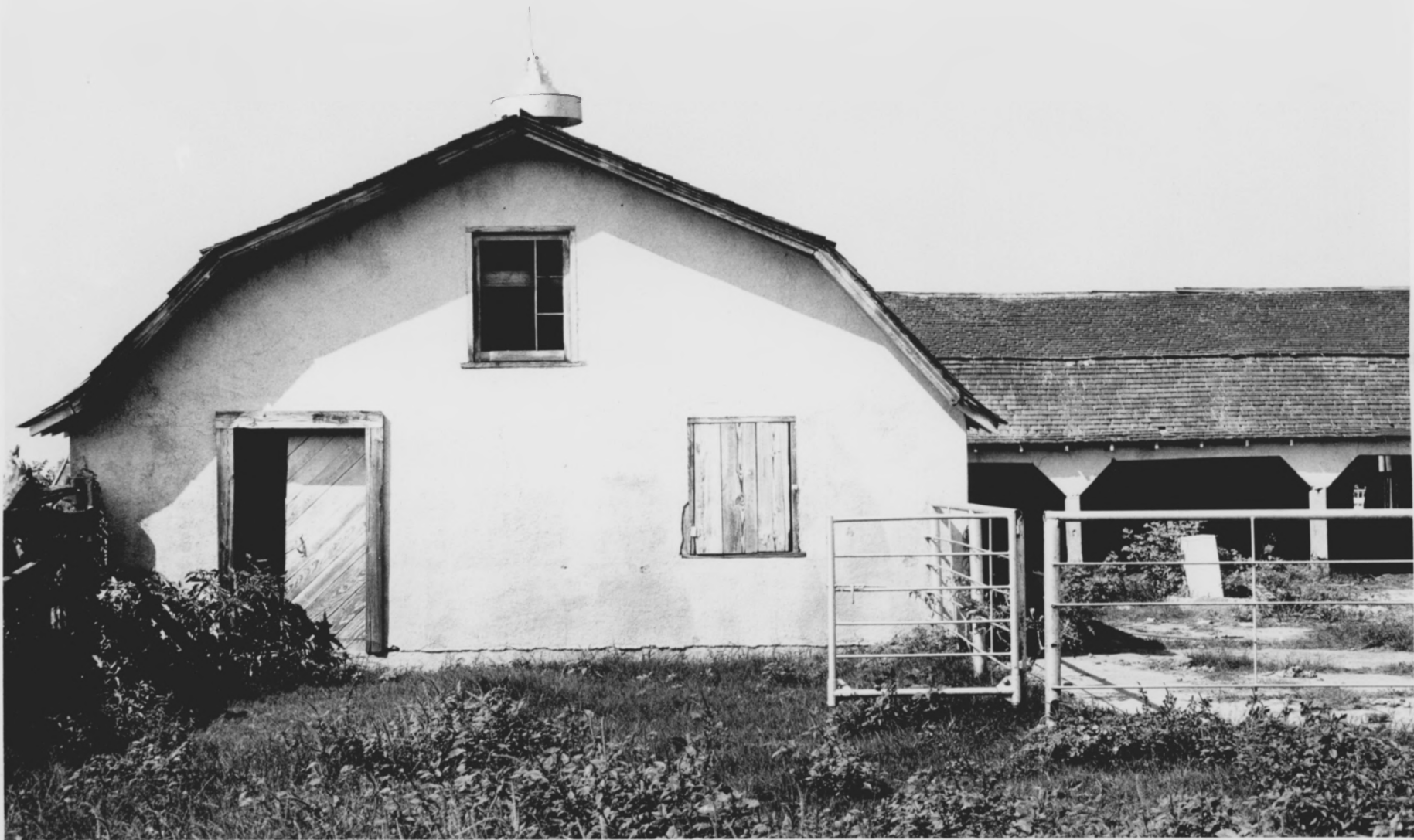
STREET AND NUMBER:
13 Miles Southwest of Ponca City on Ok. State Hwy. 156
CITY OR TOWN:
Marland
STATE: Oklahoma CODE 40 COUNTY: Kay CODE 071

3. PHOTO REFERENCE

PHOTO CREDIT: Peavler and Associates
DATE OF PHOTO: August 1974
NEGATIVE FILED AT:
Peavler and Associates, Oklahoma City

4. IDENTIFICATION

DESCRIBE VIEW, DIRECTION, ETC.
Horse Barn



**NATIONAL REGISTER OF HISTORIC PLACES
PROPERTY PHOTOGRAPH FORM**

(Type all entries - attach to or enclose with photograph)

STATE

Oklahoma

COUNTY

Kay

FOR NPS USE ONLY

ENTRY NUMBER

DATE

SEE INSTRUCTIONS

1. NAME

COMMON:

101 Ranch Historic District - Dairy Barn

AND/OR HISTORIC:

2. LOCATION

STREET AND NUMBER:

13 Miles Southwest of Ponca City on Ok. State Hwy. 156

CITY OR TOWN:

Marland

STATE:

Oklahoma

CODE

40

COUNTY:

Kay

CODE

071

3. PHOTO REFERENCE

PHOTO CREDIT:

Peavler and Associates

DATE OF PHOTO:

August 1974

NEGATIVE FILED AT:

Peavler and Associates

4. IDENTIFICATION

DESCRIBE VIEW, DIRECTION, ETC.

Dairy Barn



**NATIONAL REGISTER OF HISTORIC PLACES
PROPERTY PHOTOGRAPH FORM**

(Type all entries - attach to or enclose with photograph)

STATE	Oklahoma
COUNTY	Kay
FOR NPS USE ONLY	
ENTRY NUMBER	DATE

SEE INSTRUCTIONS

1. NAME

COMMON: 101 Ranch Historic District - Machine Shop (Slaughter House?)
AND/OR HISTORIC:

2. LOCATION

STREET AND NUMBER:
13 Miles Southwest of Ponca City on Ok. State Hwy. 156

CITY OR TOWN:
Marland

STATE:	CODE	COUNTY:	CODE
Oklahoma	40	Kay	071

3. PHOTO REFERENCE

PHOTO CREDIT: Peavler and Associates
DATE OF PHOTO: August 1974
NEGATIVE FILED AT: Peavler and Associates, Oklahoma City

4. IDENTIFICATION

DESCRIBE VIEW, DIRECTION, ETC.

Machine Shop (Slaughter House?)



**NATIONAL REGISTER OF HISTORIC PLACES
PROPERTY PHOTOGRAPH FORM**

(Type all entries - attach to or enclose with photograph)

STATE Oklahoma	
COUNTY Kay	
FOR NPS USE ONLY	
ENTRY NUMBER	DATE

SEE INSTRUCTIONS

1. NAME

COMMON: **101 Ranch Historic District - Chicken House**
AND/OR HISTORIC:

2. LOCATION

STREET AND NUMBER:
13 Miles Southwest of Ponca City on Ok. State Hwy. 156

CITY OR TOWN:
Marland

STATE: Oklahoma	CODE 40	COUNTY: Kay	CODE 071
---------------------------	-------------------	-----------------------	--------------------

3. PHOTO REFERENCE

PHOTO CREDIT: **Peavler and Associates**

DATE OF PHOTO: **August 1974**

NEGATIVE FILED AT:
Peavler and Associates, Oklahoma City

4. IDENTIFICATION

DESCRIBE VIEW, DIRECTION, ETC.
Chicken House



STATE

Oklahoma

COUNTY

Kay

FOR NPS USE ONLY

ENTRY NUMBER

DATE

NATIONAL REGISTER OF HISTORIC PLACES

PROPERTY PHOTOGRAPH FORM

(Type all entries - attach to or enclose with photograph)

SEE INSTRUCTIONS

1. NAME

COMMON: 101 Ranch Historic District - Ranch Foreman's House
AND/OR HISTORIC:

2. LOCATION

STREET AND NUMBER:
13 Miles Southwest of Ponca City on Ok. State Hwy. 156

CITY OR TOWN:
Marland

STATE:	CODE	COUNTY:	CODE
Oklahoma	40	Kay	071

3. PHOTO REFERENCE

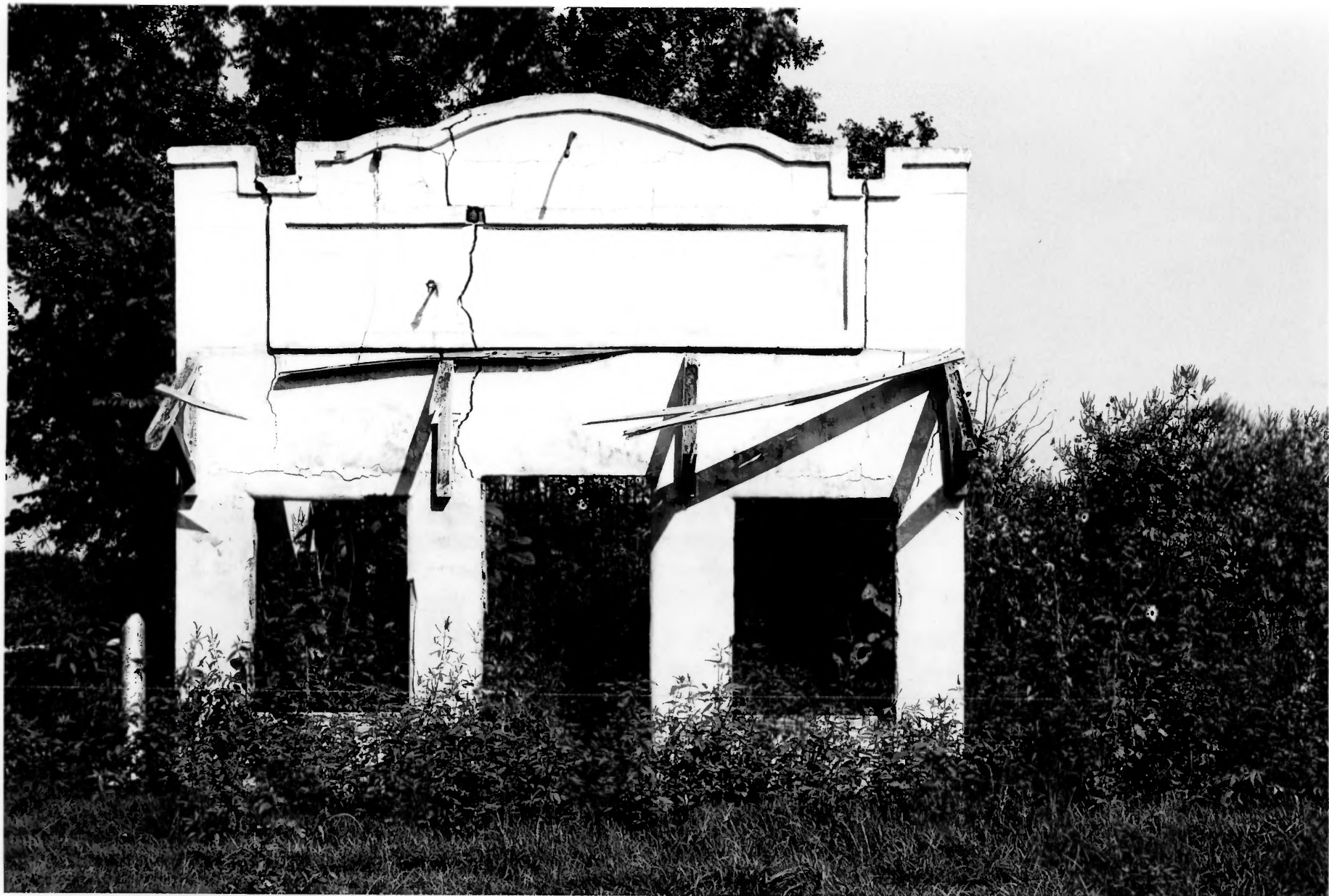
PHOTO CREDIT: Peavler and Associates

DATE OF PHOTO: August 1974

NEGATIVE FILED AT:
Peavler and Associates

4. IDENTIFICATION

DESCRIBE VIEW, DIRECTION, ETC.
Ranch Foreman's House



NATIONAL REGISTER OF HISTORIC PLACES

PROPERTY PHOTOGRAPH FORM

(Type all entries - attach to or enclose with photograph)

STATE Oklahoma	
COUNTY Kay	
FOR NPS USE ONLY	
ENTRY NUMBER	DATE

SEE INSTRUCTIONS

1. NAME

COMMON: 101 Ranch Historic District - Jail

AND/OR HISTORIC:

2. LOCATION

STREET AND NUMBER:
13 Miles Southwest of Ponca City on Ok. State Hwy. 156

CITY OR TOWN:
Marland

STATE: Oklahoma	CODE 40	COUNTY: Kay	CODE 071
--------------------	------------	----------------	-------------

3. PHOTO REFERENCE

PHOTO CREDIT: Peavler and Associates

DATE OF PHOTO: August 1974

NEGATIVE FILED AT:
Peavler and Associates, Oklahoma City


4. IDENTIFICATION

DESCRIBE VIEW, DIRECTION, ETC.
Jail



101 Ranch Historic District (Silos, Granery and Milk Storage), Marland, Oklahoma

Photo by Peavler and Associates for ABC and NPS, 1974



COWBOY HILL

GIVEN IN 1930 BY ZACK MILLER
TO CHEROKEE STRIP COWPUNCHERS
ASSOCIATION AS PLACE FOR ANNUAL
REUNION OF THOSE WHO HAD RIDDEN
THE RANGE IN THE STRIP.

OKLAHOMA HISTORICAL SOCIETY, 1939



**COW
BOY
HILL**

1920

EOL RANCH

CHEROKEE STRIP
COW PUNCHERS
ASSOCIATION

NATIONAL REGISTER OF HISTORIC PLACES
PROPERTY PHOTOGRAPH FORM

(Type all entries - attach to or enclose with photograph)

STATE Oklahoma	
COUNTY Kay	
FOR NPS USE ONLY	
ENTRY NUMBER	DATE

SEE INSTRUCTIONS

1. NAME

COMMON: 101 Ranch Historic District - Cowboy Hill
AND/OR HISTORIC:

2. LOCATION

STREET AND NUMBER:
13 Miles Southwest of Ponca City on Ok. State Hwy. 156
CITY OR TOWN:
Marland
STATE: Oklahoma CODE 40 COUNTY: Kay CODE 071

3. PHOTO REFERENCE

PHOTO CREDIT: Peavler and Associates
DATE OF PHOTO: August 1974
NEGATIVE FILED AT:
Peavler and Associates, Oklahoma City

4. IDENTIFICATION

DESCRIBE VIEW, DIRECTION, ETC.
Cowboy Hill