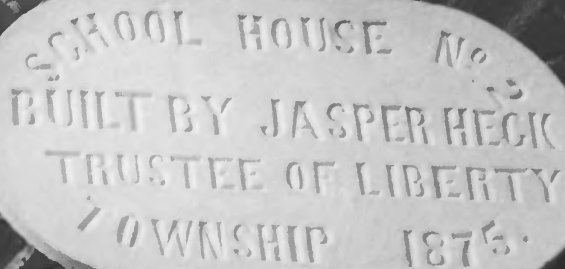




1. McColley Schoolhouse #2
2. Shelbyville, Indiana
3. Pruitt Studios, Waldron, IN
4. Aug. 22, 1990
5. Tony Armstrong, Shelbyville, IN
6. Front (South) side of building.
7. Photo # 1

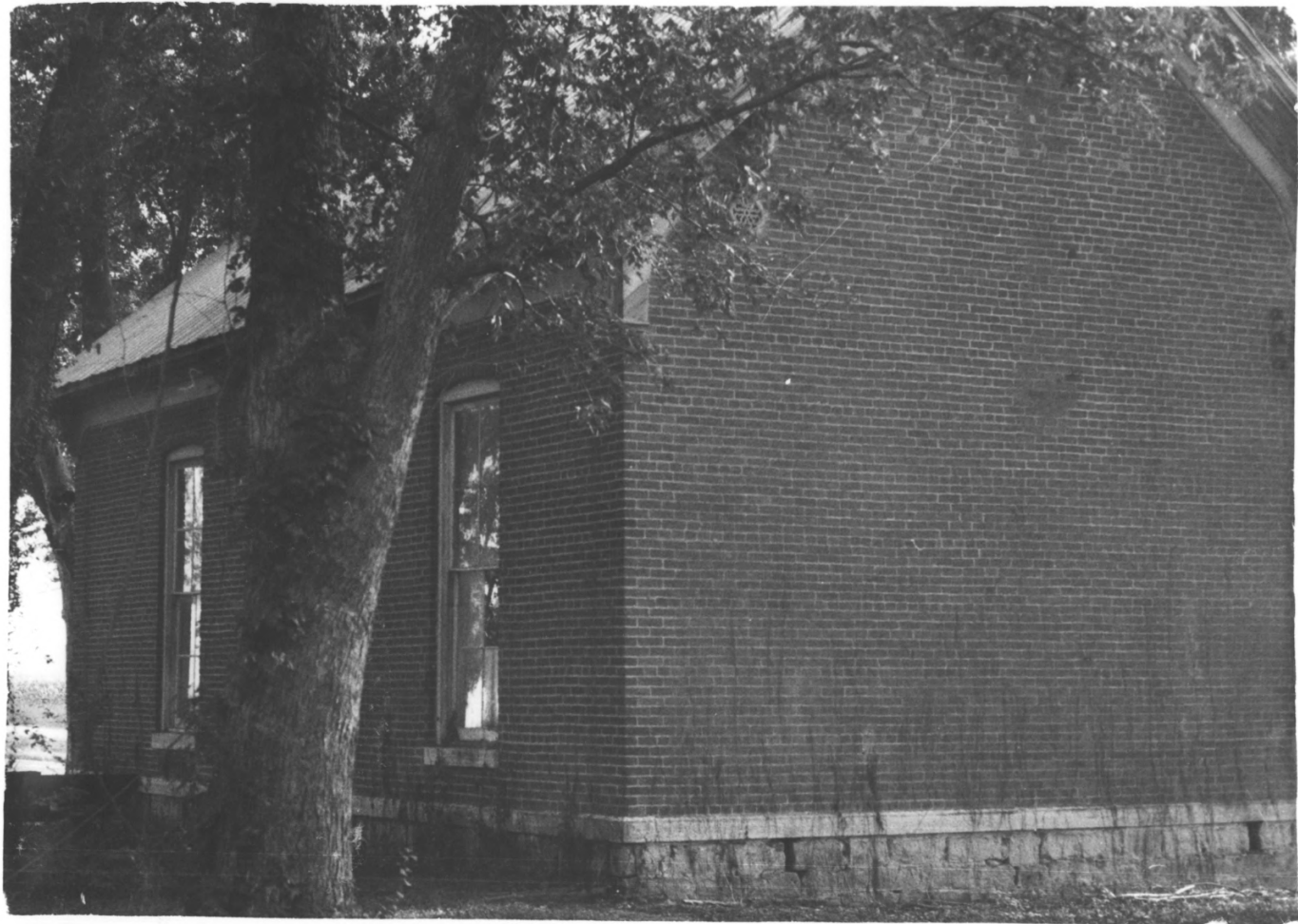


SCHOOL HOUSE No. 3
BUILT BY JASPER HECK
TRUSTEE OF LIBERTY
TOWNSHIP 1875.

1. Mc Colley Schoolhouse #2
2. Shelbyville, Indiana
3. Pruitt Studios, Waldron, IN
4. Aug. 22, 1990
5. Tony Armstrong, Shelbyville, IN
6. Name plate. Front (South) side of building.
7. Photo #2



1. McColley Schoolhouse # 2
2. Shelbyville, Indiana
3. Pruitt Studios, Waldron, IN
4. Aug. 22, 1990
5. Tony Armstrong, Shelbyville, IN
6. Front Door (South) + Side (East).
7. Photo #3



1. McColley Schoolhouse #2
2. Shelbyville, Indiana
3. Pruitt Studios, Waldron, IN
4. Aug. 22, 1990
5. Tony Armstrong, Shelbyville, IN
6. East Side & Back (North).
7. Photo #4



1. McColley Schoolhouse # 2
2. Shelbyville, Indiana .
3. Pruitt Studios, Waldron, IN
4. Aug. 22, 1990
5. Tony Armstrong, Shelbyville, IN
6. West Side of Building.
7. Photo # 5



1. Mc Colley Schoolhouse #2
2. Shelbyville, Indiana.
3. Pruitt Studios, Waldron, IN
4. Aug. 22, 1990
5. Tony Armstrong, Shelbyville, IN
6. West side & Front (South) of building.
7. Photo #6



1. McColley Schoolhouse # 2
2. Shelbyville, Indiana
3. Pruitt Studios, Waldron, IN
4. Aug. 22, 1990
5. Tony Armstrong, Shelbyville, IN
6. Scroll bracket
7. Photo # 7



1. Mc Colley Schoolhouse #2
2. Shelbyville, Indiana
3. Pruitt Studios, Waldron, IN
4. Aug. 22, 1990
5. Tony Armstrong, Shelbyville, IN
6. Trim under scroll bracket.
7. Photo # 8

U.S. GEOLOGICAL SURVEY
WASHINGTON
THE DIRECTOR
ELEVATION
ABOVE SEA
852 FEET
JULY 1952
BENCH MARK

1. Mc Colley Schoolhouse #2
2. Shelbyville, Indiana
3. Pruitt Studios, Waldron, IN
4. Aug. 22, 1990
5. Tony Armstrong, Shelbyville, IN
6. Bench Mark, located on the
southeast corner of lot. (non-contributing)
7. Photo # 9



1. McColley Schoolhouse #2
2. Shelbyville, Indiana
3. Pruitt Studios, Waldron, IN
4. Dec. 1990
5. Tony Armstrong, Shelbyville, IN
6. Abandoned Sawmill, North of Schoolhouse (non-contributing)
7. Photo # 10



1. McColley Schoolhouse #2
2. Shelbyville, Indiana.
3. Pruitt Studios, Waldron, IN
4. Aug. 22, 1990
5. Tony Armstrong, Shelbyville, IN
6. Inside Northeast Corner,
original blackboard shown.
7. Photo # 11



1. McColley Schoolhouse, #2
2. Shelbyville, Indiana
3. Pruitt Studios, Waldron, IN
4. Aug. 22, 1990
5. Tony Armstrong, Shelbyville, IN
6. Inside, window along east side.
7. Photo # 12



1. Mc Colley Schoolhouse #2
2. Shelbyville, Indiana
3. Pruitt Studios, Waldron, IN
4. Aug. 22, 1990
5. Tony Armstrong, Shelbyville, IN
6. Inside, facing south.
outside doorway + 2 cloak rooms
7. Photo #13



1. McClellan School house #2
2. Shelbyville, Indiana
3. Pruitt Studios, Walston IN
4. Aug. 22, 1990
5. Tony Armstrong, Shelbyville IN
6. Southeast corner inside
7. Photo # 14