



SCHNABEL, CHARLES & ELSIE RESIDENCE
2375 S. W. PARK PLACE, KING'S HILL HISTORIC DISTRICT
PORTLAND, MULTNOMAH CO., OR
SOUTH ELEVATION

PHOTO: KIMBERLY DEMUTH
DEMUTH ASSC.
1314 N. W. IRVING ST. #510
PORTLAND, OR 97209

1 of 32
/ 190



SCHNABEL, CHARLES & ELSIE RESIDENCE
2375 S.W. PARK PLACE, KING'S HILL HISTORIC DISTRICT
PORTLAND, MULTNOMAH CO., OR
SOUTH & EAST ELEVATIONS

PHOTO: KIMBERLY DEMUTH
DEMUTH & ASSC.
1314 N.W. IRVING ST. #510
PORTLAND, OR 97209

2 of 32
1/190



ADD MORE COMMON CONDOMINIUMS

1102 & 1104 S.W. ARDMORE, KING'S HILL HISTORIC DISTRICT
PORTLAND, MULTNOMAH CO., OR
WEST ELEVATION.

PHOTO: KIMBERLY DEMUTH
DEMUTH & ASSC.

1314 N.W. IRVING ST. #510
PORTLAND, OR 97209

3 of 32

1190



NEATE, A.E. and ISABELLE RESIDENCE
2390 S.W. MADISON, KING'S HILL HISTORIC DISTRICT
PORTLAND, MULTNOMAH CO., OR
SOUTH ELEVATION

PHOTO: KIMBERLY DEMUTH
DEMUTH & ASSC.
1314 N.W. IRVING ST. #510
PORTLAND, OR. 97209

4 of 32

1/90



2368 S.W. MADISON, KING'S HILL HISTORIC DISTRICT
PORTLAND, MULTNOMAH CO., OR
NORTH ELEVATION

PHOTO: KIMBERLY DEMUTH
DEMUTH & ASSC.

1314 N.W. IRVING ST. #510
PORTLAND, OR 97209

506 32

1 190



JONES, ARTHUR F. & DOROTHY RESIDENCE
2378 S.W. MADISON, KING'S HILL HISTORIC DISTRICT
PORTLAND, MULTNOMAH CO., OR
NORTH ELEVATION

PHOTO: KIMBERLY DEMUTH
DEMUTH & ASSOC.

1314 N.W. IRVING ST. #510
PORTLAND, OR 97209

4 of 32

1 190



RUSSELL, JAMES M. & GRALE RESIDENCE
1135 S.W. VISTA, KING'S HILL HISTORIC DISTRICT
PORTLAND, MULTNOMATH CO, OR
EAST ELEVATION

PHOTO: KIMBERLY DEMUTH
DEMUTH & ASSC.

1314 N.W. IRVING ST. #510
PORTLAND, OR 97209

7 of 32

1/190



BARDE, JACK N. & EDITH RESIDENCE
2400 S.W. PARK PLACE, KING'S HILL HISTORIC DISTRICT
PORTLAND, MULTNOMAH CO., OR
NORTH ELEVATION

PHOTO: KIMBERLY DENUTH
DENUTH & ASSC.
1314 N.W. IRVING ST. #510
PORTLAND, OR 97209

8 of 32

1 190



MOWREY, DENT'S EVE RESIDENCE
1062 S.W. DOUGLAS PLACE, KING'S HILL HISTORIC DISTRICT
PORTLAND, MULTNOMAH CO., OR
WEST ELEVATION

PHOTO: KIMBERLY DENMUTH
DENMUTH & ASSC.

1314 N.W. IRVING ST. #510
PORTLAND, OR 97209

9 of 32

1 190



2245 S.W. PARK PLACE, KING'S HILL HIST. DIST.
POTLAND, MULTNOMAH CO., OR
SOUTH ELEVATION

PHOTO: KIMBERLY DENUTH
DENUTH & ASSC.

1314 N.W. IRVING ST. # 510
POTLAND, OR 97209

10 of 32

1190



CHOWN, FRANK R. RESIDENCE
2030-2032 S.W. MAIN, KING'S HILL HISTORIC DISTRICT
PORTLAND, MULTNOMAH CO., OR
SOUTH ELEVATION

PHOTO: KIMBERLY DEMUTH
DEMUTH & ASSOC.
1314 N.W. IRVING ST. #510
PORTLAND, OR 97209

11 of 32

1/190



(REYNOLDS, HARRINGTON R. & MARY K.) APARTMENTS
2167 S.W. YAN HILL, KING'S HILL HISTORIC DISTRICT
PORTLAND, MULTNOMATH CO., OR
SOUTH ELEVATION

PHOTO: KIMBERLY DEMUTH
DEMUTH & ASSC.
1314 N.W. IRVING ST. #510
PORTLAND, OR 97209

12 of 32

1/190



LEWIS, ALLEN L. RESIDENCE
2164 S.W. PARK PLACE, KING'S HILL HISTORIC DISTRICT
PORTLAND, MULTNOMAH CO, OR
NORTH & EAST ELEVATIONS
PHOTO: KIMBERLY DEMUTH
DEMUTH & ASSC.
1314 N.W. IRVING ST. #510
PORTLAND, OR 97209

13 of 32

1 / 90



STRATTON-CORNELIUS RESIDENCE
2132 S.W. YAMHILL, KING'S HILL HISTORIC DISTRICT
PORTLAND, MULTNOMAH CO., OR
NORTH ELEVATION

PHOTO: KIMBERLY DEMUTH
DEMUTH & ASSC.

1314 N.W. IRVING ST. #510
PORTLAND, OR 97209

14 of 32

1 / 90



KING'S HILL APARTMENTS
731 S.W. KING, KING'S HILL HISTORIC DISTRICT
PORTLAND, MULTNOMAH CO., OR
EAST ELEVATION

PHOTO: KIMBERLY DENWITZ
DENWITZ & ASSC.
1314 N.W. IRVING ST. #510
PORTLAND, OR 97209

15 of 32

1 190



(BOYCE, EDWARD E.; ELEANOR B.) APARTMENTS
2185 SW YAMHILL, KING'S HILL HISTORIC DISTRICT
PORTLAND, MULTNOMAH CO, OR
WEST ELEVATION

PHOTO: KIMBERLY DENMUTH

DENMUTH & ASSOC.

1314 N.W. IRVING ST. # 510

PORTLAND, OR 97209

16 of 32

1 / 90



(BOYCE, EDWARD E. & ELEANOR B.) APARTMENTS
285 S.W. YAMHILL, KING'S HILL HISTORIC DISTRICT
PORTLAND, MULTNOMAH CO., OR
WEST ELEVATION ENTRANCE
PHOTO: KIMBERLY DENMUTH
DENMUTH & ASSC.
1314 N.W. IRVING ST. #510
PORTLAND, OR 97209

17 of 32

1/190



RENA VILLA
815 S.W. VISTA, KING'S HILL HISTORIC DISTRICT
PORTLAND, MULTNOMAH CO., OR
EAST ELEVATION

PHOTO: KIMBERLY DEMUTH
DEMUTH & ASSO.

1314 N.W. IRVING ST. #510
PORTLAND, OR 97209

18 of 32

1 / 190



FORDHAM APARTMENTS
742 S.W. VISTA, KING'S HILL HISTORIC DISTRICT
PORTLAND, MULTNOMAH CO., OR
WEST & NORTH ELEVATIONS
PHOTO: KIMBERLY DENMUTH
DENMUTH & ASSC.
1314 N.W. IRVING ST. #510
PORTLAND, OR 97209

19 of 32

1 190



SCHACHT, EMIL & AUGUSTA RESIDENCE
733 S.W. VISTA, KING'S HILL HISTORIC DISTRICT
PORTLAND, MULTNOMAH CO., OR
EAST ELEVATION

PHOTO: KIMBERLY DEMUTH
DEMUTH & ASSC.

1314 N.W. IRVING ST. # 510
PORTLAND, OR 97209

20 of 32

1 190



VISTA AVE. APARTMENTS
846 SW. VISTA, KING'S HILL HISTORIC DISTRICT
PORTLAND, MULTNOMAH CO., OR
PHOTO: KIMBERLY DEMUTH
DEMUTH & ASSC.
1314 NW IRVING ST. #510
PORTLAND, OR 97209

21 of 32

1 / 190



831 SW VISTA, KING'S HILL HISTORIC DISTRICT
PORTLAND, MULTNOMAH CO., OR

PHOTO: KIMBERLY DENMUTH
DENMUTH & ASSC.

1314 NW IRVING ST. #510
PORTLAND, OR 97209

22 of 32

1 190




SW PARK & KING INTERSECTION, KING'S HILL HISTORIC DIST.
PORTLAND, MULTNOMAH CO., OR

This photoprint is issued for reference use
only. It is not to be copied for resale.
Permission for use in a publication, film
or video production must be requested in
writing from the Photographs Librarian

Photographs Department
Oregon Historical Society
1230 SW Park Avenue
Portland, Oregon 97205

NEGATIVE NUMBER ORHT 85313

HISTORIC PHOTOGRAPH
VIEW WEST

23 of 32 





VIEW WEST TO PORTLAND & KINGS STREET FROM WASHINGTON PARK
KING'S HILL HISTORIC DISTRICT
PORTLAND, MULTNOMAH CO, OR

This photoprint is issued for reference use
only. It is not to be copied for resale.
Permission for use in a publication, film
or video production must be requested in
writing from the Photographs Librarian

Photographs Department
Oregon Historical Society
1230 SW Park Avenue
Portland, Oregon 97205

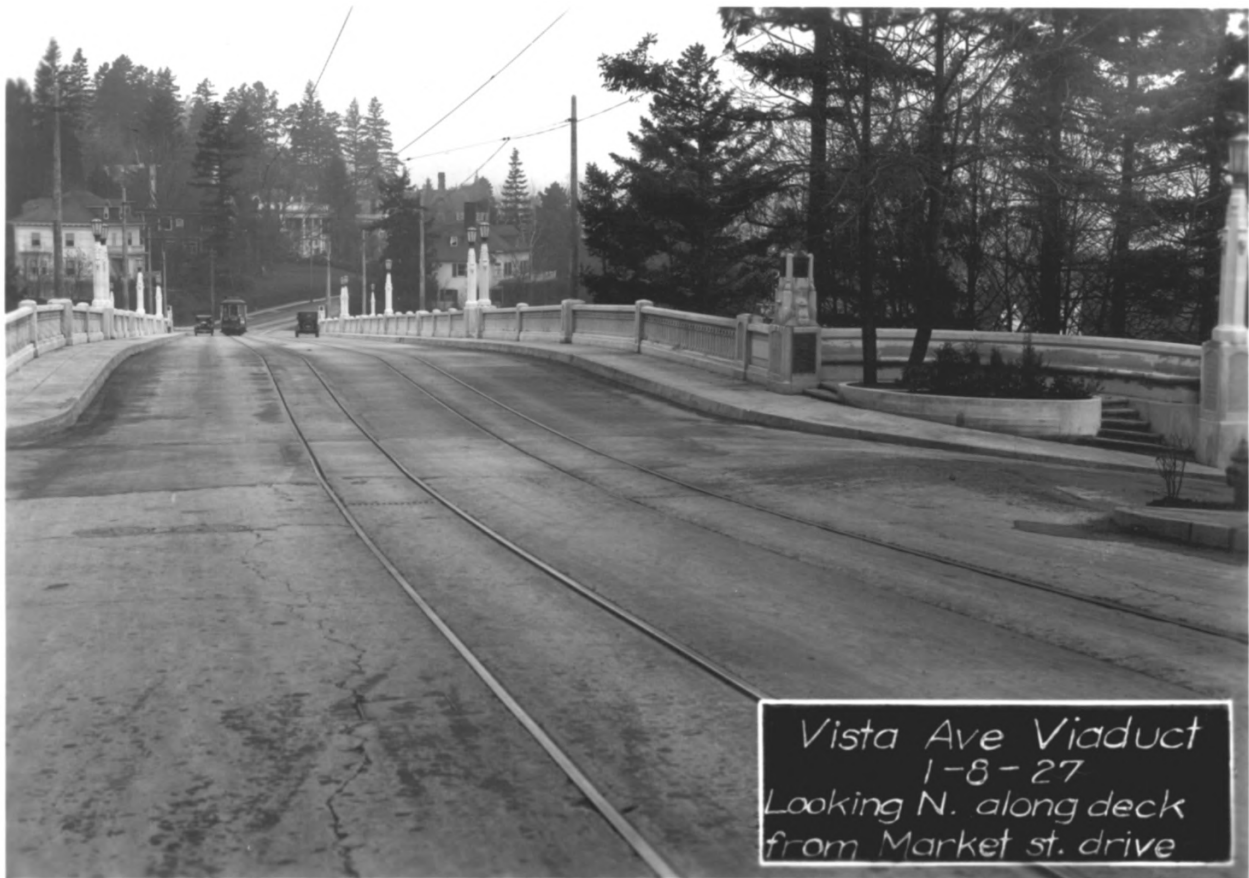
NEGATIVE NUMBER ORHI 79131

HISTORIC PHOTOGRAPH, ca. 1900

24 of 32

#1650
b

526



Vista Ave Viaduct
1-8-27
Looking N. along deck
from Market st. drive

SOUTHERN BOUNDARY OF KING'S HILL HIST. DIST. ACROSS VISTA AVE. VIADUCT
PORTLAND, MULTNOMA CO. OR

This photoprint is issued for reference use
only. It is not to be copied for resale.
Permission for use in a publication, film
or video production must be requested in
writing from the Photographs Librarian
Photographs Department
Oregon Historical Society
1230 SW Park Avenue
Portland, Oregon 97205

NEGATIVE NUMBER COP 02203

VIEW NORTH
HISTORIC PHOTOGRAPH Jan. 8, 1927

25 of 32

#1656

Handwritten scribbles



NORTH BOUNDARY OF KING'S HILL HIST. DIST.
INTERSECTION OF SW VISTA, SW GREEN & BURNSIDE
PORTLAND, MULTNOMAH CO. OR.

This photoprint is issued for reference use
only. It is not to be copied for resale.
Permission for use in a publication, film
or video production must be requested in
writing from the Photographs Librarian
Photographs Department
Oregon Historical Society
1230 SW Park Avenue
Portland, Oregon 97205

NEGATIVE NUMBER ORHT 17529

HISTORIC PHOTOGRAPH, VIEW WEST
(WHITE HOUSE, CENTER LEFT
IS RES. OF SOLOMON HIRSCH,
DESTROYED)

#1650

26 of 32



NORTH BOUNDARY OF KING'S HILL HIST. DIST. INTERSECTION OF
BURNSIDE AND SW VISTA (orig. WASHINGTON & FORD)
PORTLAND, MULTNOMAH CO, OR

This photoprint is issued for reference use
only. It is not to be copied for resale.
Permission for use in a publication, film
or video production must be requested in
writing from the Photographs Librarian

Photographs Department
Oregon Historical Society
1230 SW Park Avenue
Portland, Oregon 97205

NEGATIVE NUMBER COP 00083

HISTORIC PHOTOGRAPH, OCT. 29, 1913
VIEW SOUTHEAST

27 of 32

#1620




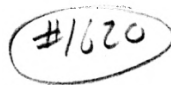
INTERSECTION OF VISTA & BURNSIDE, NORTH BOUNDARY OF KINGS HILL HIST. DIST.
PORTLAND, MULTNOMAH CO., OR
PHOTO:

This photoprint is issued for reference use
only. It is not to be copied for resale.
Permission for use in a publication, film
or video production must be requested in
writing from the Photographs Librarian
Photographs Department
Oregon Historical Society
1230 SW Park Avenue
Portland, Oregon 97205

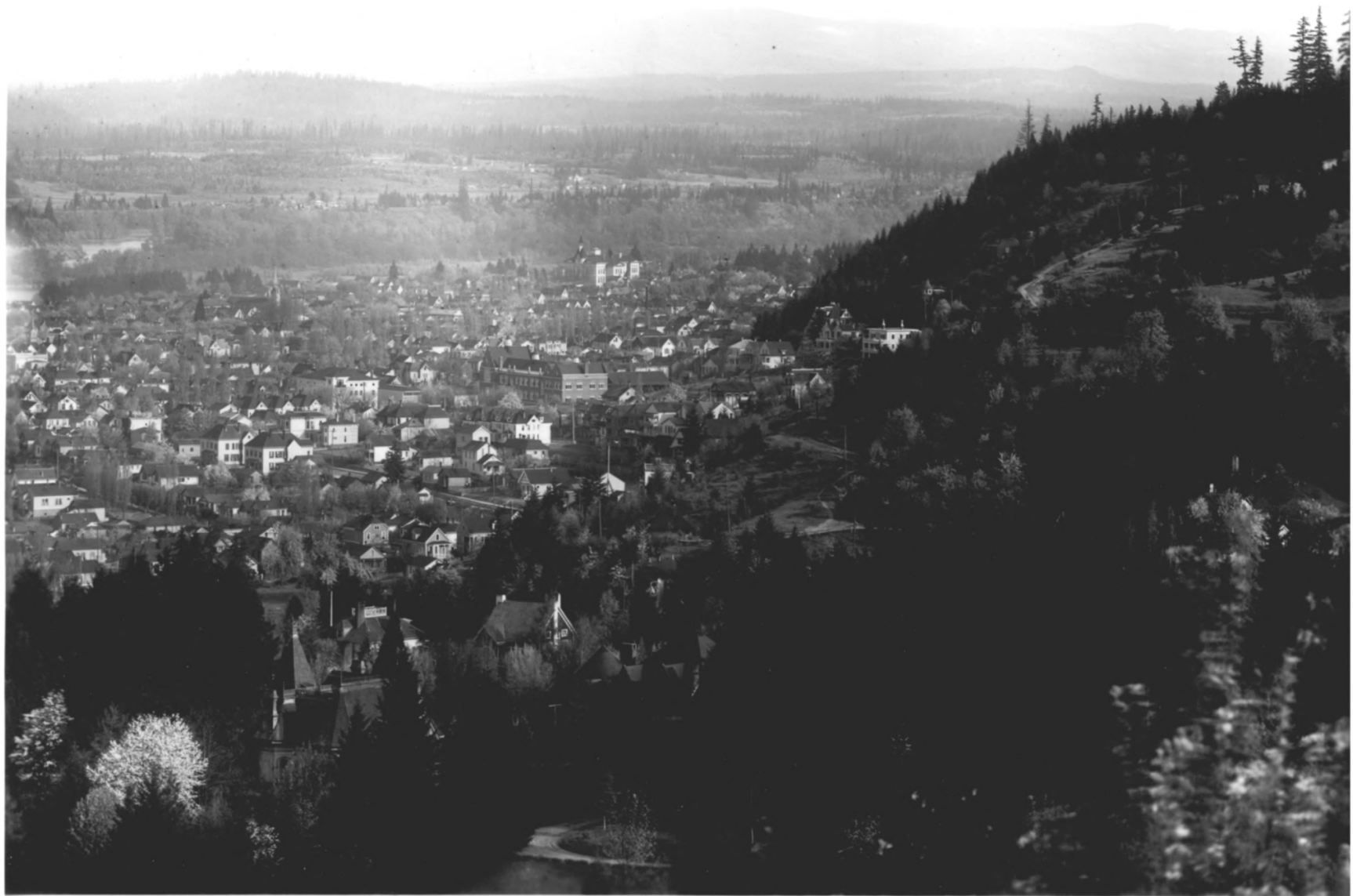
HISTORIC PHOTOGRAPH
VIEW NORTH ACROSS BURNSIDE

NEGATIVE NUMBER ORHS 50545

28 of 32 

 #1620

 826



VIEW OF KINGS HILL FROM WASHINGTON PARK
PORTLAND, MULTNOMAH COUNTY, OREGON

HISTORIC PHOTOGRAPH

L. C. H. HERRICHSEN

1903

29 OF 32

This photoprint is issued for reference use only. It is not to be copied for resale. Permission for use in a publication, film or video production must be requested in writing from the photographer Librarian
Photographs Department
Oregon Historical Society
1230 SW Park Avenue
Portland, Oregon 97205

NEGATIVE NUMBER

ORIST # 25595

Portland Panorama
by
Herrichsen



VIEW OF KINGS HILL FROM WASH. PARK
PORTLAND, MULTNOMAH COUNTY, OREGON
HISTORIC PHOTOGRAPH

L.C.H. HENRICHSEN

1903

30 OF 52

This photoprint is issued for reference use
only. It is not to be copied for resale.
Permission for use in a publication, film
or video production must be requested in
writing from the Photographs Librarian

Photographs Department
Oregon Historical Society
1230 SW Park Avenue
Portland, Oregon 97205

NEGATIVE NUMBER

~~ORHI 25593~~

Portland Panorama
ca. 1903

photo by L.C.H. Henrichsen

#1507



This photoprint is issued for reference use only. It is not to be copied for resale. Permission for use in a publication, film or video production must be requested in writing from the Photographs Librarian
Photographs Department
Oregon Historical Society
1230 SW Park Avenue
Portland, Oregon 97205

NEGATIVE NUMBER ORHS 12176

Chinese Vegetable gardens
prior to 1909

Present site of Multnomah Club
Chinese gardeners lived here in shacks,
selling vegetables from shoulder baskets

SALMON STREET, EASTING, SOUTH
PORTLAND, MULTNOMAH COUNTY, OR.
HISTORIC PHOTO
31 OF 32



AERIAL VIEW, KING'S HILL
PORTLAND, MULTNOMAH CO., OREGON

This photoprint is issued for reference use
only. It is not to be copied for resale.
Permission for use in a publication, film
or video production must be requested in
writing from the Photographs Librarian
Photographs Department
Oregon Historical Society
1230 SW Park Avenue
Portland, Oregon 97205

NEGATIVE NUMBER ORHI 38406

C. 1935

32 OF 32

Multnomah Club
and Stadium

356 P184