



HISTORIC BUILDING OF  
PRESBYTERIAN CHURCH  
THE CHURCH AND BELL TOWER OF THIS CHURCH ARE  
ON THE NATIONAL REGISTER OF HISTORIC PLACES AND  
ARE PROTECTED BY THE NATIONAL ANTI-DRUG  
ACTS OF 1906 AND 1933.  
DANGER TO THE  
STRUCTURE WILL BE ENFORCED

Marion Hall

Baileyville, Nemaha County, KS

Martha Hagedorn-Krass

November 2000

KSNS

Northeast View, South Facade, West  
Elevation

1/7



HISTORIC WOODEN HALL  
PRESERVATION SOCIETY  
THE HOUSE ON THE LEFT IS THE BIRTHPLACE OF  
THE FIRST SCHOOL IN THE HISTORY OF THE STATE  
AND THE FIRST SCHOOL IN THE HISTORY OF THE STATE  
FOUNDED BY THE  
E. L. HALL, 1832-1882

Marion Hall

Baileyville, Nemaha County, KS

Martha Hagedorn-Krass

November 2000

KSNS

Northwest View, South Facade, East  
Elevation

2/7



Marion Hall

Baileyville, Nemaha County, KS

Martha Hagedorn-Krass

November 2000

KSHS

Southwest view, East Elevation, North  
Elevation

3/7



Marion Hall

Baileyville, Nemaha County, KS

Martha Hagedorn-Krass

November 2000

KSNS

North View

4/7





Marion Hall

Baileyville, Nemaha County, KS

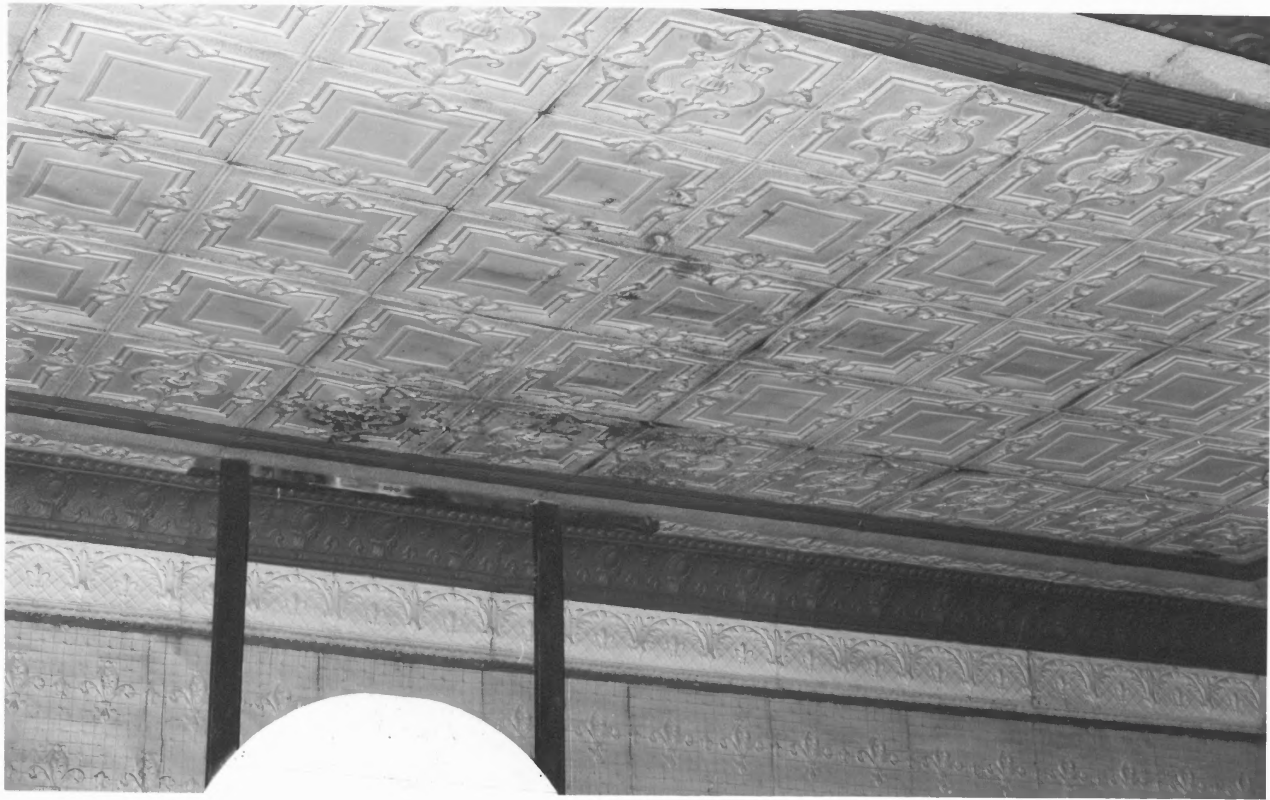
Martha Hagedorn-Krass

November 2000

KSHS

South View

5/7



Marion Hall

Baileyville, Nemaha County, KS

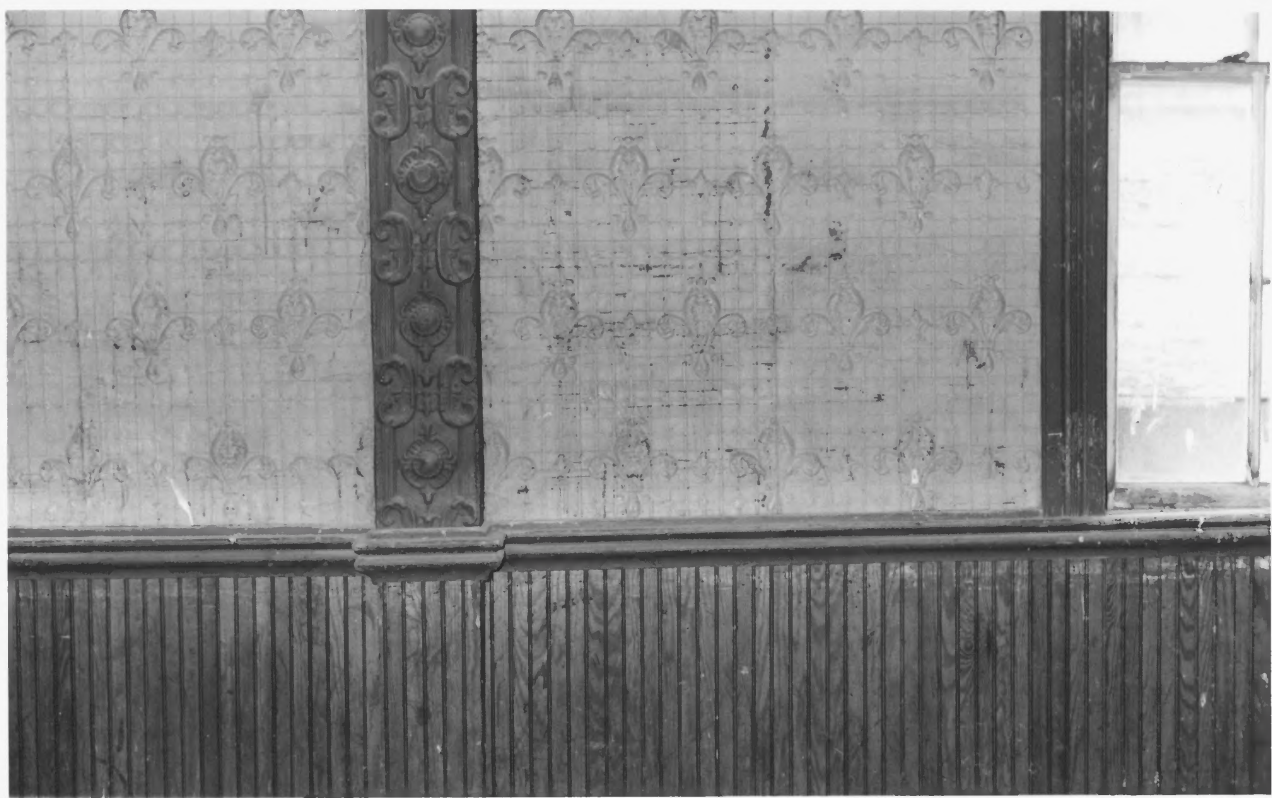
Martha Hagedorn-Krass

November 2000

KSHS

Pressed Tin Details

6/7



Marion Hall

Baileyville, Nemaha County, KS

Martha Hagedorn-Krass

November 2000

KSWS

Wall Details

7/7