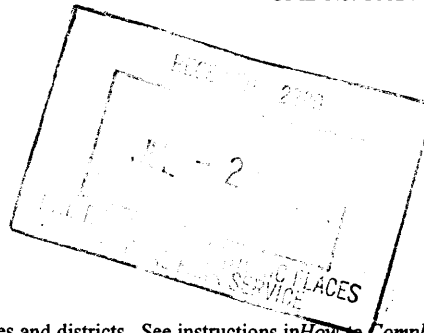


**United States Department of Interior
National Park Service**



**National Register of Historic Places
Registration Form**

This form is for use in nominating or requesting determinations for individual properties and districts. See instructions in *How to Complete the National Register of Historic Places Registration Form* (National Register Bulletin 16A). Complete each item by marking "x" in the appropriate box or by entering the information requested. If an item does not apply to the property being documented, enter "N/A" for "not applicable." For functions, architectural classification, materials, and areas of significance, enter only categories and subcategories from the instructions. Place additional entries and narrative items on continuation sheets (NPS Form 10-900A). Use a typewriter, word processor, or computer, to complete all items.

1. Name of Property

historic name Wadhams Gas Station

other names/site number N/A

2. Location

street & number 1647 South 76th Street

city or town West Allis

state Wisconsin code WI county Milwaukee

N/A

not for publication

N/A

vicinity

code 079 zip code 53214

3. State/Federal Agency Certification

As the designated authority under the National Historic Preservation Act, as amended, I hereby certify that this nomination request for determination of eligibility meets the documentation standards for registering properties in the National Register of Historic Places and meets the procedural and professional requirements set forth in 36 CFR Part 60. In my opinion, the property meets does not meet the National Register criteria. I recommend that this property be considered significant nationally statewide locally. (See continuation sheet for additional comments.)

[Signature]
Signature of certifying official/Title

6/21/04
Date

State or Federal agency and bureau

In my opinion, the property meets does not meet the National Register criteria.
(See continuation sheet for additional comments.)

Signature of commenting official/Title

Date

State or Federal agency and bureau

Wadhams Gas Station

Milwaukee County

Wisconsin

Name of Property

County and State

4. National Park Service Certification

I hereby certify that the property is:
entered in the National Register.

___ See continuation sheet.

___ determined eligible for the
National Register.

___ See continuation sheet.

___ determined not eligible for the
National Register.

___ See continuation sheet.

___ removed from the National
Register.

___ other, (explain:)

Edouard Beall

8/11/04

per

Signature of the Keeper

Date of Action

5. Classification

Ownership of Property
(check as many boxes as
as apply)

- private
- X public-local
- public-State
- public-Federal

Category of Property
(Check only one box)

- X building(s)
- district
- structure
- site
- object

Number of Resources within Property
(Do not include previously listed resources
in the count)

contributing	noncontributing
1	buildings
	sites
	structures
	objects
1	0 total

Name of related multiple property listing:
(Enter "N/A" if property not part of a multiple property
listing.)

N/A

**Number of contributing resources
is previously listed in the National Register**

0

6. Function or Use

Historic Functions
(Enter categories from instructions)

COMMERCE/TRADE: specialty store

Current Functions
(Enter categories from instructions)

VACANT/NOT IN USE

7. Description

Architectural Classification
(Enter categories from instructions)

OTHER: Oriental Revival

Materials
(Enter categories from instructions)

Foundation Concrete

walls Brick

roof Metal

other Wood

Narrative Description

(Describe the historic and current condition of the property on one or more continuation sheets.)

United States Department of the Interior
National Park Service

National Register of Historic Places
Continuation Sheet

Wadhams Gas Station

Section 7 Page 1

West Allis, Milwaukee County, Wisconsin

Start

The Wadhams Gas Station was erected in 1927.¹ It is a one-story, free-standing building with painted brick walls, resting on a poured concrete foundation. The distinctive swooping pagoda style roof² with upturned corners displays a strong Oriental influence. The front of the steeply pitched roof is clad in bright red metal tiles. The back of the roof descends part way with the red tiles to a wooden cornice. Inside each gable is a lighted red "W" stained glass window for Wadhams Oil Co. Inc., the original owner of the building.

Description

The Wadhams Gas Station is situated on the northwest corner of the busy arterial streets of National Avenue and 76th Street in central West Allis. A modern apartment complex is located across the street on the northeast corner. To the west lies a parking lot of a church. Modern commercial buildings occupy the southeast and southwest corners of the intersection. Beyond the intersection are early to mid twentieth century homes, churches and several modern public buildings.

The Wadhams Gas Station faces east. The door is centered on the east facing facade of the building with four horizontal glass panes filling in the upper three quarter's of the door. On each side of the door are large windowpanes that line up with the door panes. The windows feature plain vertical and horizontal trimming with a plain lug sill. The surrounds of these and all other window groupings of the building contain a rounded element at each corner of the window surround.

The north elevation features two large windows. Each window has a tripartite organization. At the center of each 12 light window are four horizontal panes. To either side of the larger central pane is a smaller square pane. The placement of the windows on the side elevations corresponds with the windows on the front facade. These windows also feature plain vertical and horizontal trimming with a plain lug sill. The west half of the building steps out to the edge of the roof eave. This portion of the building contains the rest room. The door to the restroom is located in the ell created by the change in plane. The door is of the same design as the main door to the gas station.

The south façade contains a single twelve light window. A small utility room occupies the west half of the plan and elevation. There is no architectural elaboration of this portion of the building.

¹ City of West Allis Application for Permit #12,598, April 4, 1927.

² Daniel I. Vieyra, Fill'er Up: The Architectural History of America's Gas Stations (Macmillan Publishing Co. Inc., 1979), pp 23-24.

United States Department of the Interior
National Park Service

National Register of Historic Places
Continuation Sheet

Wadhams Gas Station

West Allis, Milwaukee County, Wisconsin

Section 7 Page 2

The west or rear elevation consists of a rectangular brick wall with painted wooden boards along the top.

The interior consists of a small office area and shelves along the windows for merchandise. There is a doorway to the storage room in the northwest corner of the interior; and there is a doorway to another storage room near the southwest area of the interior. Finishes include a combination of drywall and fiberboard on the walls, plywood panels on the ceiling, and concrete flooring.

Alterations

Photos indicate that the curved brick work on the west side of the structure along the roof line was modified after 1978 to straight horizontal and vertical lines. This is located at the back of the building on a elevation and does not compromise the overall architectural integrity of the building. In addition, a renovation of the gas station was completed in May of 2000. While the finishes of the walls and roof were repaired, damaged brick and concrete replaced, and electrical wiring enhanced, the overall integrity of the Wadhams Gas Station has been maintained.

____ End

Wadhams Gas Station
Name of Property

Milwaukee County
County and State

Wisconsin

8. Statement of Significance

Applicable National Register Criteria

(Mark "x" in one or more boxes for the criteria qualifying the property for the National Register listing.)

- A Property is associated with events that have made a significant contribution to the broad patterns of our history.
- B Property is associated with the lives of persons significant in our past.
- C Property embodies the distinctive characteristics of a type, period, or method of construction or represents the work of a master, or possesses high artistic values, or represents a significant and distinguishable entity whose components lack individual distinction.
- D Property has yielded, or is likely to yield, information important in prehistory or history.

Criteria Considerations

(Mark "x" in all the boxes that apply.)

Property is:

- A owned by a religious institution or used for religious purposes.
- B removed from its original location.
- C a birthplace or grave.
- D a cemetery.
- E a reconstructed building, object, or structure.
- F a commemorative property.
- G less than 50 years of age or achieved significance within the past 50 years.

Areas of Significance

(Enter categories from instructions)

Architecture

Period of Significance

1927

Significant Dates

1927

Significant Person

(Complete if Criterion B is marked)

N/A

Cultural Affiliation

N/A

Architect/Builder

Eschweiler, Alexander C.
Danielson, C.B.

Narrative Statement of Significance

(Explain the significance of the property on one or more continuation sheets.)

United States Department of the Interior
National Park Service

National Register of Historic Places
Continuation Sheet

Section 8 Page 1

Wadhams Gas Station
West Allis, Milwaukee County, Wisconsin

 Insert

The Wadhams Gas Station is eligible for the National Register of Historic Places under *Criterion C* in the area of Architecture. The Wadhams Gas Station is a fine example of a unique property type, the thematic style filling station of the 1920s. The period of significance coincides with the station's date of construction – 1927. The Wadhams Gas Station is one of only two gas stations remaining in West Allis built during this period.

History of the City of West Allis

The village of West Allis was incorporated in 1902. It is located due west of the Milwaukee manufacturing districts of Walker's Point and the Menomonee River Valley. Milwaukee's industrial areas influenced the character of West Allis. Two years before the village incorporated, Charles Allis agreed to move the very large and growing E. P. Allis Company from Milwaukee to West Allis. During the first part of the 20th century other manufacturing concerns either moved to West Allis or started their enterprises in this industrial suburb. Many ethnic groups moved to West Allis to be near the newly developing industrial opportunities.

The industrial character of West Allis diminished in the 1980s when the Allis-Chalmers Company closed. Other industries also closed in West Allis during this era of national contraction in the manufacturing economic sector. Since then, new types of businesses have moved into West Allis. Printing and post-secondary education are two examples. A strong retail district has developed in West Allis. A small number of nationally leading manufacturers also have moved into West Allis. While the number of manufacturing companies has declined, West Allis remains a distinctly industrial suburb.

Historical Context: The Development of the Gas Station

At the turn of the 20th century changes in the transportation of goods, services and people began to appear. While railroads were the main carriers, automobiles were gaining popularity. Important to the growth in the use of automobiles was the development of the gas station.

When automobiles first appeared, car owners purchased gasoline at a petroleum depot, dry goods store or repair shop and carried the gasoline home in containers. As a result, most automobile owners stored their gasoline at home. This hazardous routine was gradually eliminated by the development of gas pumps. Gas pumps moved gasoline from a gas drum stored at a petroleum distributor directly to the vehicle, while measuring the amount of product purchased by the customer. The ability to safely store gasoline and easily dispense gasoline enabled the gasoline distributor to offer a readily available source

United States Department of the Interior
National Park Service

National Register of Historic Places
Continuation Sheet

Section 8 Page 2

Wadhams Gas Station
West Allis, Milwaukee County, Wisconsin

of gasoline without the auto owner taking on unnecessary risks.³

The gas station evolved with the technology of gas pumping. In 1905, the invention of the gravity-fed gas delivery system allowed the gas distributor to pour gas from the gasoline tank directly into the automobile. Because gravity-fed gas systems required large, elevated tanks, their availability was limited to outlying areas of a city. In the same year, a hand pump, invented to move water more easily up through a well, was adapted to gas distribution. A hand pump attached to a gas drum with a hose could pour gasoline directly into the automobile. These hand pumps could measure the amount of gas poured into a vehicle, and when combined with waterproof cabinets, the pumps could be locked and left out all night.⁴

The precursor to the modern day gas stations, according to Daniel I. Vieyra in his book Fill'er Up: The Architectural History of America's Gas Stations, was the Automobile Gas Company in St. Louis. This former bulk storage provider of wholesale gasoline moved the large gas tanks underground and put the gas pump curbside where autos drove up for a refill. These curbside gas stations became popular, but caused congestion on busy roadsides. As a result, gasoline pumps were moved onto a separate lot. Gas pumps were set alongside buildings where sales were recorded and automobile goods and services were offered. The gas station prototype, developed solely to service automobiles, had come onto the American landscape.⁵

Historical Context: The Development of the Architecture of Gas Stations

As gasoline station prototypes evolved, an office space was often added to an existing storage shed, bicycle repair shop, or blacksmith shop along with the gasoline pumps. Sometimes larger sheds were built to serve as storage for many cars; early automobile driving was limited to the warmer seasons. As free-standing stations were created solely for gas distribution they were sited along busy streets, usually on a corner for accessibility to two different streets. Most of the early gas stations were simple utilitarian gable structures with no attempt to attract customers, other than by word of mouth; they had more in common with lumberyards and petroleum tank yards. This early design was called the "shed" by John A. Jakle and Keith A. Sculle in their book, The Gas Station in America. The preceding architectural style they referred to as the "curbside" gas stations.⁶

³ Daniel I. Vieyra, Fill'er Up: The Architectural History of America's Gas Stations (Macmillan Publishing Co. Inc., 1979) p 4.

⁴ Ibid., p.4

⁵ Ibid., pp.5-7

⁶ John A. Jakle and Keith A. Sculle, The Gas Station in America (Baltimore: The Johns Hopkins University Press, 1994),

United States Department of the Interior
National Park Service

National Register of Historic Places
Continuation Sheet

Section 8 Page 3

Wadhams Gas Station
West Allis, Milwaukee County, Wisconsin

A more defined gas station type of architecture developed as gas retailers entered neighborhoods to be closer to automobile owners. Residential-looking designs reduced neighborhood resistance to gas station siting. The "house" type of gas station building contained a small office with storage space and restrooms. Some house type gas stations featured an "English cottage" look with awnings, chimneys and shutters. They also featured a large window to display petroleum products. Other popular types of "house" style gas stations imitated popular residential designs of the era: Craftsman, Colonial Revival and Tudor Revival.⁷ The dominant house type station design of the 1920s was modified with an attached canopy over the gas pumps and, often, a detached auto repair area. The canopy complemented the roofline of the building and enhanced the particular design of the gas station.⁸ Also during the 1920s the house concept was enlarged to include bays for servicing automobiles. Owners attempted to provide additional services while keeping the residential flavor of their gas stations. The service bays repeated the design of the main office area of the gas station.

Automobile use expanded quickly and standardized gas stations were built as retailers expanded into regional markets. Uniform station designs were adopted for particular gasoline brands. As long distance driving became more popular, recognizable designs helped convince customers that they could trust the same brand in different locations or cities. Some operators attempted to distinguish their stations with unique designs. They appealed to the adventure of the open road, and also to weary travelers with reminders of home. A variety of thematic gas stations resulted with standardized brand specific designs. Texaco developed a Spanish-influenced design. Pure Oil distinguished its products with an English cottage style. Some Shell gas stations were even built in the shape of sea shells.⁹ The Wadhams Gas Station is a particularly good example of a standardized and highly stylized thematic gas station.

Standardization of the look of a particular gasoline distributor's stations allowed operators to construct their gas stations at a lower building cost. Because the routes of early highways changed frequently, a newly paved road may be developed away from the current site of a gas station. The operator wanted a low cost building or one with the flexibility to disassemble and move it to a more profitable site.¹⁰

p. 137.

⁷ Ibid., pp 137-141.

⁸ Ibid., pp. 141-142.

⁹ Daniel I Veyra, Fill'er Up: An Architectural History of America's Gas Stations (MacMillan Publishing Co. Inc., 1979), pp. 9-26.

¹⁰ John A. Jakle and Keith A. Sculle, The Gas Station in America (Baltimore: The Johns Hopkins University Press, 1994) p. 138.

United States Department of the Interior
National Park Service

National Register of Historic Places
Continuation Sheet

Section 8 Page 4

Wadhams Gas Station
West Allis, Milwaukee County, Wisconsin

The decreased demand for gasoline and increased competition during the Great Depression led to consolidation of local and regional gas distributors. Retailers placed emphasis on marketing more profitable items like tires, batteries and accessories. Repair bays were enlarged or added to existing stations to attract more service-oriented customers to compensate for lower gasoline sales. The buildings became much larger. Stylish roof lines gave way to flat roofs covering boxy rectilinear masses. The bays, office and display areas were designed uniformly. The style of the period became known as the "oblong box".¹¹

By the 1960s, the public demanded the removal of "icebox" looking oblong gas stations and many stations were remodeled with decorative features, including overhangs, brick veneer and darker colors. The ranch style popular among residences was adopted by many new gas stations. In the 1970s gas station design continued with distinctive styles. One major chain introduced mansard roofs. Another added rafters underneath hip roofs topped by cupolas. In the last 20 years a new style has appeared with a canopy over the gas pumps with a small booth for the attendant. Convenience stores selling gas have replaced many gas stations with unattended gas pumps covered by a monumental canopy.¹²

Historical Context: Wadham Oil Company

The history of Wadham Oil Company reflects the national development of the gasoline industry.

In 1879, Edward A. Wadham started a grease blending business serving tanning and brewing companies in Milwaukee. The company grew slowly as Wadham had to convince customers of the dependable performance of petroleum-based lubricants. At that time most lubricants were made of vegetable or animal oils. Wadham brought in additional financial backing, and in 1903 the business was renamed Wadham Oil Co.¹³

In 1916, Harger W. Dodge, Wadham's son-in-law, now in charge of Wadham Oil Co. saw a business opportunity in addressing problems of safe storage and convenient access to gasoline by constructing a series of gas stations. The typical gas station at the time was a shed. Dodge wanted to distinguish Wadham Oil Co. gas stations from the rest of the market. Dodge contacted Alexander C. Eschweiler, noted Milwaukee architect of period revival buildings, who designed the prototype Wadhams pagoda

¹¹ Ibid., pp. 144-150

¹² Ibid., pp. 150-154

¹³ Wayne Attoe and Mark Latus, "Orient Inspired 1st Gas Stations," Milwaukee Journal, 11 February 1973, sec. 7 p. 1.

**United States Department of the Interior
National Park Service**

**National Register of Historic Places
Continuation Sheet**

Section 8 Page 5

Wadhams Gas Station
West Allis, Milwaukee County, Wisconsin

style gas station.¹⁴

The oriental style of Eschweiler's stations appealed to the motoring public's sense of adventure. Oriental architectural motifs were not completely foreign at that time. The Chicago World's Columbian Exposition in 1893 and the Louisiana Purchase Exposition in 1904 in St. Louis featured Japanese pavilions with similar forms and proportions to the first Wadhams station. Eschweiler's professional library contained several books and magazine articles about Japanese and Chinese architecture which may have provided inspiration for his eye-grabbing design.¹⁵

The first Wadhams gas station built in 1917 in Milwaukee was a great success. Over 100 were built in the Midwest during the 1920s, although only a handful remain. The Wadhams gas station pagoda designs were of two types: three-sided and four-sided. The three-sided was built to abut an existing wall. The four-sided stood freely like the gas station at 1647 S. 76th Street. Both types were built to be easily moved to a new location. In the 1930s Wadhams built larger gas stations in the pagoda style. The architect for these later buildings was Hugo Haeuser and the contractor, C.B. Danielson.¹⁶

There is confusion about the architect of the Wadhams gas station on 1647 S. 76th Street. A July 1981 West Allis Historical/Architectural Survey stated the architect was Hugo Haeuser. A review of the City of West Allis building permit number 12,598 dated April 4, 1927 indicates "owner" as the architect of record. All other literature regarding the design of this pagoda design credits Alexander C. Eschweiler, consequently the design of this station is attributed to Eschweiler.

A series of mergers began in 1929, which led to the disappearance of the Wadham Oil Co. name. In 1952 Wadham Oil Company merged with Standard Oil Company of New York. Six years later the Wadham trade name disappeared when the Wadham Division of SOCONY-Mobil was liquidated.

Significance: Architecture

Under *Criterion C*, the Wadhams Gas Station is significant as an excellent, intact, house type gas station with a thematic design. The interior plan, composed of an office, display area and a small restroom entered by an exterior door, exemplifies the house type designs of the 1920s. The swooping red tile pagoda style roof evokes the exotic nature of the then new pass time and aspiring lifestyle of automobile travel.

¹⁴ Ibid, p.1

¹⁵ Ibid, p.1

¹⁶ Ibid, p.1

United States Department of the Interior
National Park Service

National Register of Historic Places
Continuation Sheet

Section 8 Page 6

Wadhams Gas Station
West Allis, Milwaukee County, Wisconsin

The Wadhams Gas Station is eligible for the National Register of Historic Places under *Criterion C* as an excellent example of a house-type filling station with a thematic design, a building type erected in great numbers between 1920 and 1935. Alexander Eschweiler's pagoda design is considered by roadside scholars to be an iconic design in gas retailing history. His ingenious design married a typical steel-frame, glass-walled gas station box of the period to a swooping pagoda roofline, creating a building that was functional and efficient, as well as eye-grabbing. Eschweiler understood the visual dominance of its roofline in the roadside and used it as a three-dimensional billboard; its color and striking silhouette distinguishing it from the visual clutter of the emerging roadside strip. Its flamboyant roof was instantly recognizable, making the building the centerpiece of Wadhams market image. This notion of architecture as packaging was novel at the time Eschweiler created the Wadhams pagoda, but spread rapidly through gas station retailing and into the broader vocabulary of roadside design. Thus, McDonald's famous golden arches can be seen as a direct descendant of 1920s novelty designs like this pagoda. The Wadhams pagoda represents a pioneering effort to tie architecture to corporate image, a retail concept innovated by gas retailers and referred to by Jakle and Sculle in The Gas Station in America as "place-product-packaging." The house-type station acted as a transition between the period of "curbside" gasoline retailing and the corporate image gasoline retail stations in the "oblong box".

End

Wadhams Gas Station
Name of Property

Milwaukee County
County and State

Wisconsin

9. Major Bibliographic References

(Cite the books, articles, and other sources used in preparing this form on one or more continuation sheets.)

Previous Documentation on File (National Park Service):

- preliminary determination of individual listing (36 CFR 67) has been requested
- previously listed in the National Register
- previously determined eligible by the National Register
- designated a National Historic landmark
- recorded by Historic American Buildings Survey #
- recorded by Historic American Engineering Record #

Primary location of additional data:

- X State Historic Preservation Office
- Other State Agency
- Federal Agency
- Local government
- University
- Other

Name of repository:

10. Geographical Data

Acreege of Property less than one acre

UTM References (Place additional UTM references on a continuation sheet.)

1 16 417895 4762424
Zone Easting Northing

3 _____
Zone Easting Northing

2 _____
Zone Easting Northing

4 _____
Zone Easting Northing

See Continuation Sheet

Verbal Boundary Description (Describe the boundaries of the property on a continuation sheet)

Boundary Justification (Explain why the boundaries were selected on a continuation sheet)

11. Form Prepared By

name/title	Daniel O'Keefe	date	
organization		telephone	414-259-0646
street & number	1618 South 115 th Court	zip code	53214
city or town	West Allis	state	WI

**United States Department of the Interior
National Park Service**

**National Register of Historic Places
Continuation Sheet**

Section 9 Page 1

Wadhams Gas Station
West Allis, Milwaukee County, Wisconsin

Insert References

- Attoe, Wayne and Latus, Mark. "Orient Inspired 1st Gas Stations," Milwaukee Journal, 11 February 1973.
- Burbach, Reverend J. H. Historical Review of West Allis, West Allis, 1927.
- Jakle, John A. & Sculle, Keith A. The Gas Station in America. Baltimore: Johns Hopkins University Press, 1994.
- Johnson, Johnson & Roy. City of West Allis Historic Survey and Planning Study, West Allis 1981.
- Margolies, John, Pump and Circumstance: Glory Days of the Gas Station, Boston: Bullfinch Press Book, Little, Brown and Company, 1993.
- Vieyra, Daniel I. Fill'er Up: An Architectural History of America's Gas Stations New York: Macmillan Publishing Co., Inc., 1979.
- Wright's Directory of West Allis, Milwaukee: Wright Directory Company, 1932.
- Wyatt, Barbara, ed. Cultural Resource Management in Wisconsin. Madison: State Historical Society of Wisconsin, 1986.
- Other Sources of Interest:
- Downtown Milwaukee: Seven Walking Tours of Historic Buildings and Places
Milwaukee: American Revolution Bicentennial Commission, 1978
- Milwaukee Journal, 25 November, 1982
- Milwaukee Journal-Sentinel, 29 April 1997.
- Milwaukee Journal-Sentinel, 7 May 2000..
- Milwaukee Journal-Sentinel 20 May 2000.
- Milwaukee Journal-Sentinel, 22 January 2001.
- Milwaukee Journal-Sentinel, 4 January, 2002.
- Milwaukee Journal, 16 November 1978.
- Milwaukee Landmarks, Milwaukee: Department of City Development, 1981
- West Allis Star, 30 December 1999.

End of References

United States Department of the Interior
National Park Service

National Register of Historic Places
Continuation Sheet

Section 10 Page 1

Wadhams Gas Station
West Allis, Milwaukee County, Wisconsin

 Insert

Verbal Boundary Description:

The Wadhams Gas Station is located on that part of Lot 10, Block 5 of the Greenfield Heights development in West Allis, that excludes the north 30 feet. Both the north boundary measuring 26 feet long and the west boundary measuring 122.80 feet long correspond with the lot lines. The east boundary measuring 115.60 feet long and the south boundary measuring 12 feet long correspond with the curbs of 76th Street and National Avenue, respectively. The parcel encompasses less than 1.0 acres.

Verbal Boundary Justification:

The boundaries of the Wadhams Gas Station enclose all the resources historically associated with it.

 End of Boundary Descriptions

Wadhams Gas Station
Name of Property

Milwaukee County
County and State

Wisconsin

Additional Documentation

Submit the following items with the completed form:

Continuation Sheets

Maps A USGS map (7.5 or 15 minute series) indicating the property's location.
A sketch map for historic districts and properties having large acreage or numerous resources.

Photographs Representative black and white photographs of the property.

Additional Items (Check with the SHPO or FPO for any additional items)

Property Owner

Complete this item at the request of SHPO or FPO.)

name/title	Mayor Jeanette Bell	date	
organization	City of West Allis	telephone	414-302-8290
street&number	City Hall, 7525 West Greenfield Avenue	zip code	53214
city or town	West Allis	state	WI

Paperwork Reduction Act Statement: This information is being collected for applications to the National Register of Historic Places to nominate properties for listing or determine eligibility for listing, to list properties, and to amend existing listings. Response to this request is required to obtain a benefit in accordance with the National Historic Preservation Act, as amended (16 U.S.C. 470 *et seq.*).

Estimated Burden Statement: Public reporting burden for this form is estimated to average 18.1 hours per response including time for reviewing instructions, gathering and maintaining data, and completing and reviewing the form. Direct comments regarding this burden estimate or any aspect of this form to the Chief, Administrative Services Division, National Park Service, P.O. Box 37127, Washington, DC 20013-7127; and the Office of Management and Budget, Paperwork Reductions Projects, (1024-0018), Washington, DC 20503.

**United States Department of the Interior
National Park Service**

**National Register of Historic Places
Continuation Sheet**

Section photos Page 1

Wadhams Gas Station
West Allis, Milwaukee County, Wisconsin

Photo 1 of 11

Wadhams Gas Station.
West Allis, Milwaukee County, WI.
Photo by D.J. O'Keefe, August 2003.
Neg. at the Wisconsin Historical Society
View looking at east and front facade

Photo 2 of 11

Wadhams Gas Station.
West Allis, Milwaukee County, WI.
Photo by D.J. O'Keefe, August 2003.
Neg. at the Wisconsin Historical Society
View looking at south elevation

Photo 3 of 11

Wadhams Gas Station.
West Allis, Milwaukee County, WI.
Photo by D.J. O'Keefe, August 2003.
Neg. at the Wisconsin Historical Society
View looking at north elevation

Photo 4 of 11

Wadhams Gas Station
West Allis, Milwaukee County, WI
Photo by D.J. O'Keefe, August 2003.
Neg. at the Wisconsin Historical Society
View looking at west elevation

Photo 5 of 11

Wadhams Gas Station.
West Allis, Milwaukee County, WI
Photo by D.J. O'Keefe, August 2003.
Neg. at the Wisconsin Historical Society.
View looking northwest into office corner and walls

Photo 6 of 11

Wadhams Gas Station.
West Allis, Milwaukee County, WI.
Photo by D. J. O'Keefe, August 2003.
Neg. at the Wisconsin Historical Society
View looking northeast into office corner windows

United States Department of the Interior
National Park Service

National Register of Historic Places
Continuation Sheet

Wadhams Gas Station
West Allis, Milwaukee County, Wisconsin

Section photos Page 2

Photo 7 of 11

Wadhams Gas Station.
West Allis, Milwaukee County, WI.
Photo by D. J. O'Keefe, August 2003.
Neg. at the Wisconsin Historical Society
View looking northeast into office corner ceiling

Photo 8 of 11

Wadhams Gas Station.
West Allis, Milwaukee County, WI.
Photo by D. J. O'Keefe, August 2003.
Neg. at the Wisconsin Historical Society
View looking east into bottom of the front door and floor

Photo 9 of 11

Wadhams Gas Station.
West Allis, Milwaukee County, WI.
Photo by D.J. O'Keefe, August 2003.
Neg. at the Wisconsin Historical Society
View looking east through the middle of the front door.

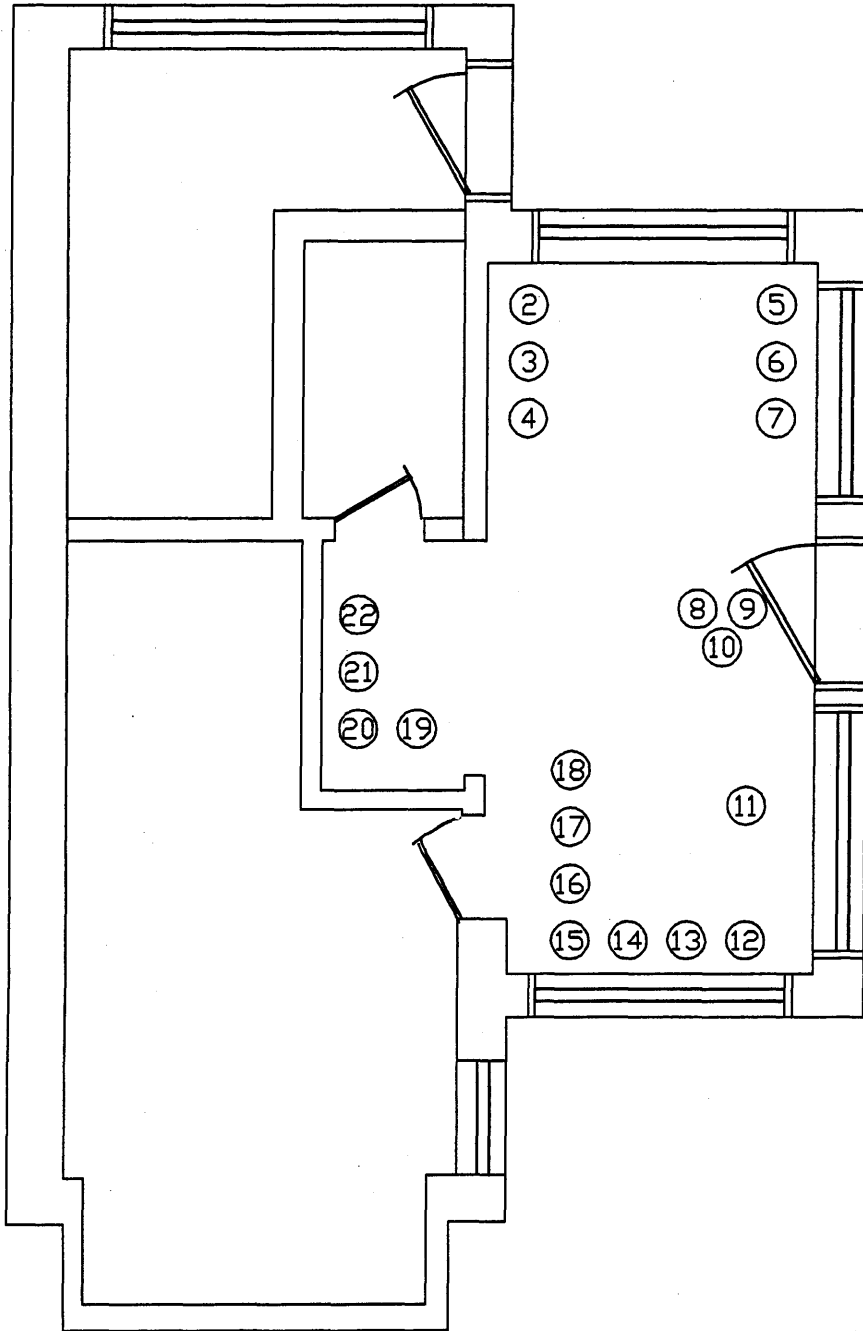
Photo 10 of 11

Wadhams Gas Station.
West Allis, Milwaukee County, WI.
Photo by D.J. O'Keefe, August 2003.
Neg. at the Wisconsin Historical Society
View looking south through display window

Photo 11 of 11

Wadhams Gas Station.
West Allis, Milwaukee County, WI.
Photo by D.J. O'Keefe, August 2003.
Neg. at the Wisconsin Historical Society
View looking southeast at corner through windows with top of wall

WADHAMS GAS STATION
WEST ALLIS, MILWAUKEE COUNTY, WISCONSIN



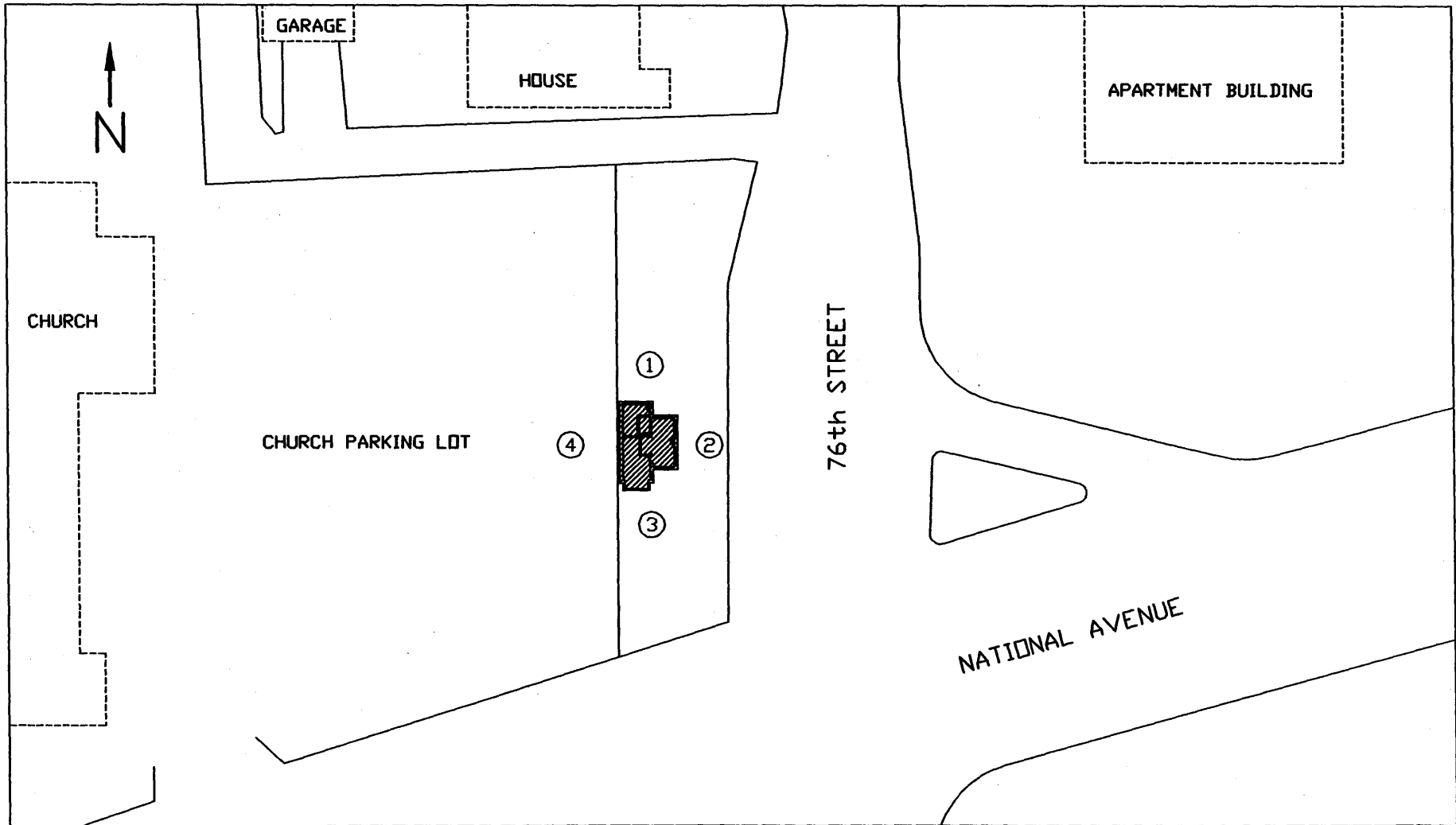
①

76th STREET

NATIONAL AVENUE

NOT TO SCALE

WADHAMS GAS STATION
WEST ALLIS, MILWAUKEE COUNTY, WISCONSIN



NOT TO SCALE