

United States Department of the Interior
National Park Service

National Register of Historic Places
Continuation Sheet

Section number _____ Page _____

SUPPLEMENTARY LISTING RECORD

NRIS Reference Number: 89000321
Evinston Community Store and P.O>
Property Name

Date Listed: 5/5/89 FL
Alachua State
County

N/A
Multiple Name

This property is listed in the National Register of Historic Places in accordance with the attached nomination documentation subject to the following exceptions, exclusions, or amendments, notwithstanding the National Park Service certification included in the nomination documentation.

Amy Schlager
Signature of the Keeper

5/4/89
Date of Action

=====
Amended Items in Nomination:

Criteria Consideration B should be checked because this building was moved.

Discussed with Florida SHPO.

DISTRIBUTION:

- National Register property file
- Nominating Authority (without nomination attachment)

United States Department of the Interior
National Park Service

National Register of Historic Places
Registration Form

MAR 22 1989

NATIONAL
REGISTER

This form is for use in nominating or requesting determinations of eligibility for individual properties or districts. See instructions in *Guidelines for Completing National Register Forms* (National Register Bulletin 16). Complete each item by marking "x" in the appropriate box or by entering the requested information. If an item does not apply to the property being documented, enter "N/A" for "not applicable." For functions, styles, materials, and areas of significance, enter only the categories and subcategories listed in the instructions. For additional space use continuation sheets (Form 10-900a). Type all entries.

1. Name of Property

historic name Evinston Community Store and Post Office
other names/site number Fred Wood Store, Wood & Swink

2. Location

street & number County Road 225 just north of County Road SE 10 N/A not for publication
city, town Evinston N/A vicinity
state Florida code FL county Alachua code 001 zip code 32633

3. Classification

Ownership of Property	Category of Property	Number of Resources within Property	
<input checked="" type="checkbox"/> private	<input checked="" type="checkbox"/> building(s)	Contributing	Noncontributing
<input type="checkbox"/> public-local	<input type="checkbox"/> district	<u>1</u>	<u>0</u> buildings
<input type="checkbox"/> public-State	<input type="checkbox"/> site		<u>0</u> sites
<input type="checkbox"/> public-Federal	<input type="checkbox"/> structure		<u>0</u> structures
	<input type="checkbox"/> object		<u>0</u> objects
		<u>1</u>	<u>0</u> Total

Name of related multiple property listing:
N/A

Number of contributing resources previously listed in the National Register 0

4. State/Federal Agency Certification

As the designated authority under the National Historic Preservation Act of 1966, as amended, I hereby certify that this nomination request for determination of eligibility meets the documentation standards for registering properties in the National Register of Historic Places and meets the procedural and professional requirements set forth in 36 CFR Part 60. In my opinion, the property meets does not meet the National Register criteria. See continuation sheet.

[Signature] Date 3/13/89
Signature of certifying official
Florida State Historic Preservation Officer
State or Federal agency and bureau

In my opinion, the property meets does not meet the National Register criteria. See continuation sheet.

Signature of commenting or other official Date

State or Federal agency and bureau

5. National Park Service Certification

I, hereby, certify that this property is:

entered in the National Register.
 See continuation sheet.

determined eligible for the National Register. See continuation sheet.

determined not eligible for the National Register.

removed from the National Register.

other, (explain:)

[Signature] 5/15/89
Signature of the Keeper Date of Action

6. Function or Use

Historic Functions (enter categories from instructions)

Commerce: Warehouse
Commerce: Department Store
Government: Post Office

Current Functions (enter categories from instructions)

Commerce: Department Store
Government: Post Office

7. Description

Architectural Classification
(enter categories from instructions)

Other: Frame Vernacular

Materials (enter categories from instructions)

foundation Concrete
walls Wood
roof Metal
other Metal; iron

Describe present and historic physical appearance.

(PLEASE SEE CONTINUATION SHEETS)

9. Major Bibliographical References

7/10/89

Previous documentation on file (NPS):

- preliminary determination of individual listing (36 CFR 67) has been requested
- previously listed in the National Register
- previously determined eligible by the National Register
- designated a National Historic Landmark
- recorded by Historic American Buildings Survey # _____
- recorded by Historic American Engineering Record # _____

See continuation sheet

Primary location of additional data:

- State historic preservation office
- Other State agency
- Federal agency
- Local government
- University
- Other

Specify repository: _____

10. Geographical Data

Acreage of property Less than 1 acre

UTM References

A

1	7
---	---

3	8	1	1	4	10
---	---	---	---	---	----

3	2	6	12	7	16	10
---	---	---	----	---	----	----

 Zone Easting Northing

C

--	--

--	--	--	--	--	--	--	--

--	--	--	--	--	--	--	--	--	--

B

--	--

--	--	--	--	--	--

--	--	--	--	--	--	--	--

 Zone Easting Northing

D

--	--

--	--	--	--	--	--

--	--	--	--	--	--	--	--

See continuation sheet

Verbal Boundary Description

The nominated property occupies Lots 7, 8, and 9 of Block 6 in Section 32, Township 11 South, Range 21 East.

See continuation sheet

Boundary Justification

The boundary includes the lots on which the building is currently located. These lots were historically associated with the property.

See continuation sheet

11. Form Prepared By

name/title Barbara E. Mattick, Historic Sites Specialist
 organization Bureau of Historic Preservation date March 1989
 street & number R.A. Gray Bldg., 500 S. Bronough Street telephone (904) 487-2333
 city or town Tallahassee state Florida zip code 32399-0250

**United States Department of the Interior
National Park Service****National Register of Historic Places
Continuation Sheet**Section number 7 Page 1**SUMMARY:**

The Evinston Community Store and Post Office is a very plain, one-story, rectangular, frame vernacular building, built of heart pine, on concrete blocks. It has a front gabled metal roof with an attached shed roofed porch, board and batten siding, and an exterior chimney on the rear elevation. It is located in Evinston, a small, unincorporated community in Alachua County, just west of Orange Lake at the Marion County boundary. The original building, erected in 1884 as a warehouse, has housed the Evinston post office and has served as a general store for the area since 1896. It has been altered somewhat over the years, including a move of twenty-five yards in 1957, but retains its integrity to a remarkable degree.

SETTING:Present Setting:

The Evinston Community Store and Post Office is located in the southeast corner of Block 6 on the west side of County Road 225, just north of the Alachua-Marion County boundary, next to an old packing house. Evinston is a very small, rural community centered around a cluster of seven buildings. The store is one of the major components of this group, and the focal point of the community (Photo 9).

Original Setting:

In 1882, Captain W. D. Evins, a large landowner in the area, gave land for the right-of-way of the Florida Southern Railroad. In 1884, a large depot was erected on a narrow strip of land between the west side of the railroad tracks and present day County Road 225. The store building was located on the west side of the road in the northeast corner of Block 6, opposite the depot. Within a few years, several homes, some of which remain, were built east of the tracks and south of the store. Citrus trees grew in the yards and nearby groves.

In 1956 the depot was closed and later moved from the site. The next year, the paving of County Road 225 threatened the store which sat at the bend where the road crossed the railroad tracks. The paving eliminated the

United States Department of the Interior
National Park ServiceNational Register of Historic Places
Continuation SheetSection number 7 Page 2

bend, placing the store dangerously close to the road. The store, therefore, was moved twenty-five yards south and ten yards west to its present location on Block 6, where it retains its original setting along the road. Railway service was discontinued in 1979, and the tracks were removed 1979-80.

PRESENT PHYSICAL APPEARANCE

Exterior:

The Evinston Community Store and Post Office is a one story, rectangular building with a front gable roof. Stretching across the main facade (east elevation) is an attached porch with a metal shed roof supported by four simple posts. Four concrete steps lead up to the centrally located double doors of the main entrance. The doors have vertical planks on the exterior and horizontal planks on the interior. Two 6/6 sash windows flank the entrance. Plank shutters, secured with an iron bolt, cover the windows. Signs for the post office and general store and an American flag pole mark the entrance (Photo 1).

The north elevation has board and batten siding with no entrances or windows (Photo 2). The west elevation (rear) has one centrally located single door constructed in the same way as the front door. It is approached by three concrete steps flanked by wooden railings. To the right of the door (south) is a 6/6 sash window. Immediately to the left of the door (north) is a chimney made of concrete block and brick (Photo 3). The south elevation mirrors the north elevation except for a door with horizontal boards at the west end (Photos 4 & 5).

Interior:

The interior of the store is one large room with a post office area partially partitioned off in the southeast corner. It is delineated by a bank of post boxes, a cashier window, and a letter drop fashioned from hard wood (Photo 8). The walls of the store have horizontal siding, and the ceiling has hand planed heart of pine boards, board and batten construction. An unvented attic is accessed via a 12" x 15" hole in the ceiling. Counters and display shelves

United States Department of the Interior
National Park Service

National Register of Historic Places
Continuation Sheet

Section number 7 Page 3

are arranged on either side, and shelves run the length of the building (Photo 7). Racks for storing lumber and long objects hang from the ceiling. A small wood stove with a large stove pipe running to the rear chimney dominates the center of the interior space (Photo 6).

Alterations:

The building was originally constructed as a warehouse in 1884. Although the building has undergone several alterations over the years, its basic integrity remains intact. At one time, there were two additions. A barber shop was added on the back of the store prior to 1910. The slant of the roof can be discerned by a cut in the board and batten siding on the west elevation, to the left of the chimney. Its entrance must have been separate, for there is no trace of direct access into the store. The barber shop was dismantled in 1928. An attached "shed room", also constructed before 1910, used to run the length of the store on the south side. Direct access into the store was through the door which remains at the west end of the south elevation. The shed room, used for storage, had double doors which faced the road and railway to the east. The room was removed in 1951. The building, therefore, reflects its original 1884 configuration.

The relocation of the building in 1957 brought some other changes: original brick piers were replaced with the present cement blocks, the chimney on the west elevation was built, and new cement steps were installed at the main entrance.

The interior has been changed to a lesser degree. In 1965 a plywood floor was laid over the original floor which had been damaged by break-ins. The floor of the front porch has been restored with old boards. In 1978 a U.S. Post Office directive required the postal area to be enclosed up to the ceiling. Vertical wood rails, compatible with the store's interior were installed.

United States Department of the Interior
National Park ServiceNational Register of Historic Places
Continuation SheetSection number 8 Page 1

SUMMARY:

The Evinston Community Store and Post Office is significant under Criterion A as a rare surviving example of a community general store and post office. The building was erected as a warehouse in 1884, but has served Evinston and the surrounding area continuously as a store and post office since 1896. It is significant under Criterion C as a rare example of a remarkably unaltered, rural, frame vernacular, commercial building.

CONTEXT:

The small, rural community of Evinston is located in what once was part of the Arredondo Grant, given by the King of Spain to Don Fernando de la Maza Arredondo c1817. About 1879, William Drayton Evins (1830-1899) came to south Alachua County in the central part of Florida and bought land near Micanopy. He surveyed, cleared, fenced, and farmed the land, and planted a citrus grove and a peach orchard. Railroads moved into Central Florida in the 1880s, opening the interior of the state to further settlement. Evins deeded land in what is now Evinston to the Florida Southern Railway in 1882. A post office was established there on February 25, 1882. By April 1883, the community of Evinston was platted and three lots in the northeast corner of Block 6 were sold by the railway to Simon H. Benjamin and Jacob Katz. In August, they sold the lots to W.P. Shettleworth.

Evinston's population in 1886 was a mere 13, primarily made up of orange growers and vegetable and truck farmers. The two largest farmers were Shettleworth and W.D. Evins. Even with so small a population, the community supported a school, a Presbyterian church, and a store. Farmers and growers around the state suffered great losses during the Big Freezes of 1894-95 and 1899, and many became shop keepers or local officers to supplement their agricultural income. Evinston's population reached a peak of 300 around 1912, but fell to 200 in the 1920s. Until 1956, the depot in Evinston served the area's transportation needs. Evinston, with a current population of 150, remains an agricultural community, although much of the farmland is now pastureland and the citrus groves are again recovering from freezes.

United States Department of the Interior
National Park Service

National Register of Historic Places
Continuation Sheet

Section number 8 Page 2

HISTORIC SIGNIFICANCE

W.P. Shettleworth is credited with the construction of the town's oldest buildings. In 1884, he erected a warehouse on the northeast corner of Block 6. It was used by Simon H. Benjamin to store merchandise unloaded from the train for his stores in nearby Flemington and Micanopy. Shettleworth sold the building in May 1884, and it passed through numerous owners until 1909 when it was bought by Henry Deaver Wood (1865-1930), Evins' son-in-law. J. L. Wolfenden, one of the interim owners, is credited with converting the warehouse into a store and moving the post office into it in 1896.

Henry (Hal) D. Wood was a mercantile partner with W.D. Evins' son, Robert C. Evins, from 1906 until Robert's accidental death in 1910. In 1909, they bought the store from the W.T. Rose Estate. It has remained in the Wood family since then. Hal Wood continued to run the store, and also served as postmaster from 1913 until his death in 1930. His older son Robert Pierce Wood then served as postmaster from 1930 to 1934, followed by his younger brother, Frederick William Wood, who served as postmaster from 1934 to 1979. He was honored in 1975 as the longest serving postmaster in the state.

When Fred Wood took over management of the store in 1934, he formed a partnership with his brother-in-law, Paul C. Swink. Their old sign, "Wood & Swink", is still over the entrance to the store. Over the years, Fred and his wife, Jane Yongue Wood (the current owner), cleared the store of all debts. Fred Wood managed and owned the store, and served as postmaster for forty-five years, and his is the single most significant name associated with the building. Thus, an alternate name of the property is the Fred Wood Store. His wife has managed the store since his death in 1981.

From 1886 to 1956, the Evinston Community Store and Post Office was the communications center for the surrounding area as a major drop off point in the mail system. Citizens of the area congregated at the store awaiting the mails. The building continues to serve the community as a store, post office, and central gathering

United States Department of the Interior
National Park Service

**National Register of Historic Places
Continuation Sheet**

Section number 8 Page 3

place, and remains as a rare example of a rural business and communication facility which has remained in continuous use for over a century.

ARCHITECTURAL SIGNIFICANCE

The Evinston Community Store and Post Office is a rare example of a rural, frame vernacular, commercial building which maintains its original integrity to a remarkable degree. It was one of the earliest buildings of Evinston, a small community which developed in the Alachua County frontier as the railroad opened up Central Florida for settlement in the mid-1880s. The 1884 building is a fine example of the construction skills, knowledge, and materials available in Alachua County at that time. Notable features of the simple, functional building include its board and batten siding, interior woodwork, and old post office boxes.

United States Department of the Interior
National Park Service

National Register of Historic Places
Continuation Sheet

Section number 9 Page 1

BOOKS

- Buchholz, F.W. History of Alachua County, Florida. St. Augustine: n.p., 1929.
- Davis, Jess G. History of Alachua County. n.p.: Alachua County Historical Commission, 1959.
- Family History for the Wood-Evins Family of Evinston, Florida, 1985. Unpublished mimeographed typescript.
- R.L. Polk & Co.'s Florida Gazetteer and Business Directory, 1911-1912. Jacksonville, Fla.: R.L. Polk & Co., 1911.
- R.L. Polk & Co.'s Florida State Gazetteer and Business Directory, 1918. Jacksonville, Fla.: R.L. Polk & Co., 1918.
- R.L. Polk & Co.'s Florida State Gazetteer and Business Directory, 1925. Jacksonville, Fla.: R.L. Polk & Co., 1925.
- Richards, John R., Comp. South Publishing Company's Florida State Gazetteer and Business Directory, Vol. 1, 1886-7. New York: South Publishing Co., 1886.

NEWSPAPERS

- Alligator (Gainesville), May 23, 1978. "Post Office/General Store Endures the Years".
- Gainesville Sun, May 30, 1976. "Visit Fred Wood's Evinston Store and Step into the Past".
- _____. March 4, 1982. "Evinston Post Office Celebration Truly an American Affair".
- Miami Herald, January 25, 1974. "Cracker Country Around Evinston is Real Florida".
- Ocala Star-Banner, March 9, 1975. "Evinston Postmaster Honored for 41 Years Service".
- _____, March 10, 1982. "Evinston Post Office Centennial Draws Alachua, Marion Celebrants".

United States Department of the Interior
National Park Service

**National Register of Historic Places
Continuation Sheet**

Section number 9 Page 2

Orlando Sentinel, August 14, 1985. "Evinston Keeps Past
Alive To-day".

GOVERNMENT DOCUMENTS

Alachua County. Public Records, Deed Books.

_____. Mortgage Books.

INTERVIEWS

Danette Smith, Postmistress in Micanopy, with Diana B.
Cohen, Archivist for the Micanopy Historical Society,
March 15, 1988.

George W. Harper, District Manager, Reddick District,
Florida Power Corporation, with DBC, March 10, 1988.

Mark Richardson (great grandson of J.L. Wolfenden) with DBC,
March 9, 1988.

Wilma B. (Sue) Wood, Postmistress in Evinston, with DBC,
October 1987 through May 1988. (Numerous interviews).

United States Department of the Interior
National Park ServiceNational Register of Historic Places
Continuation SheetSection number _____ Photographs 1
Page _____

-
- 1) 1) Evinston Community Store and Post Office
 - 2) Evinston, Alachua County, Florida
 - 3) Ed Wells
 - 4) May 1988
 - 5) Photographer
 - 6) Front (east) elevation, camera facing west
 - 7) #1 of 9

Items 1-5 are the same for the remaining photographs.

- 2) 6) North elevation, camera facing south
- 7) #2 of 9
- 3) 6) West elevation, camera facing east
- 7) #3 of 9
- 4) 6) South elevation, camera facing north
- 7) #4 of 9
- 5) 6) Detail of door, west end of south elevation,
camera facing north
- 7) #5 of 9
- 6) 6) Interior, showing north and west walls, camera
facing northwest
- 7) #6 of 9
- 7) 6) Interior, south wall, camera facing south
- 7) #7 of 9
- 8) 6) Interior, Post Office area in southeast corner,
camera facing southeast
- 7) #8 of 9
- 9) 6) Streetscape, from across County Road 225, camera
facing west
- 7) #9 of 9

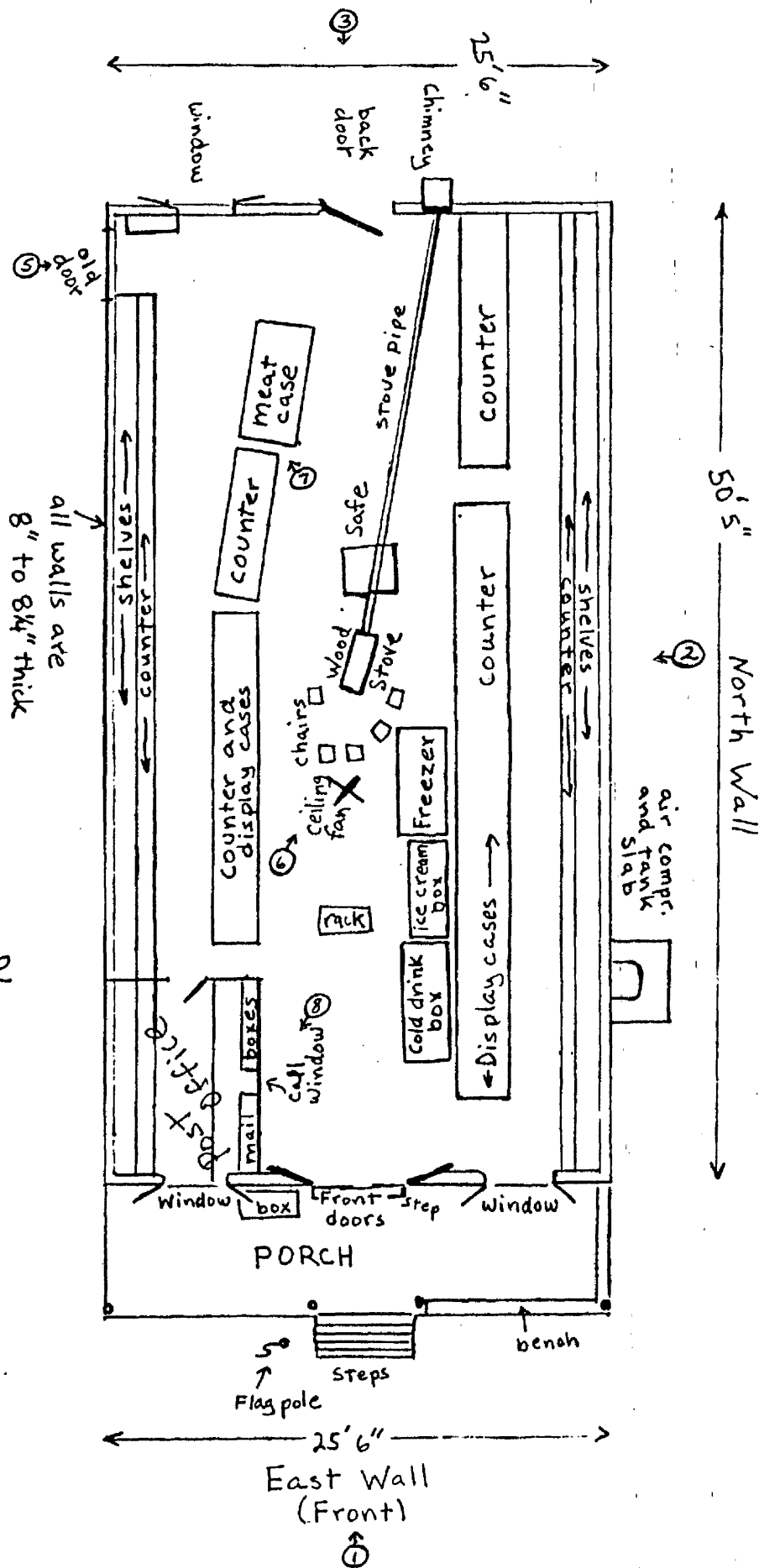
Old Store and Post Office - Evinston, Florida

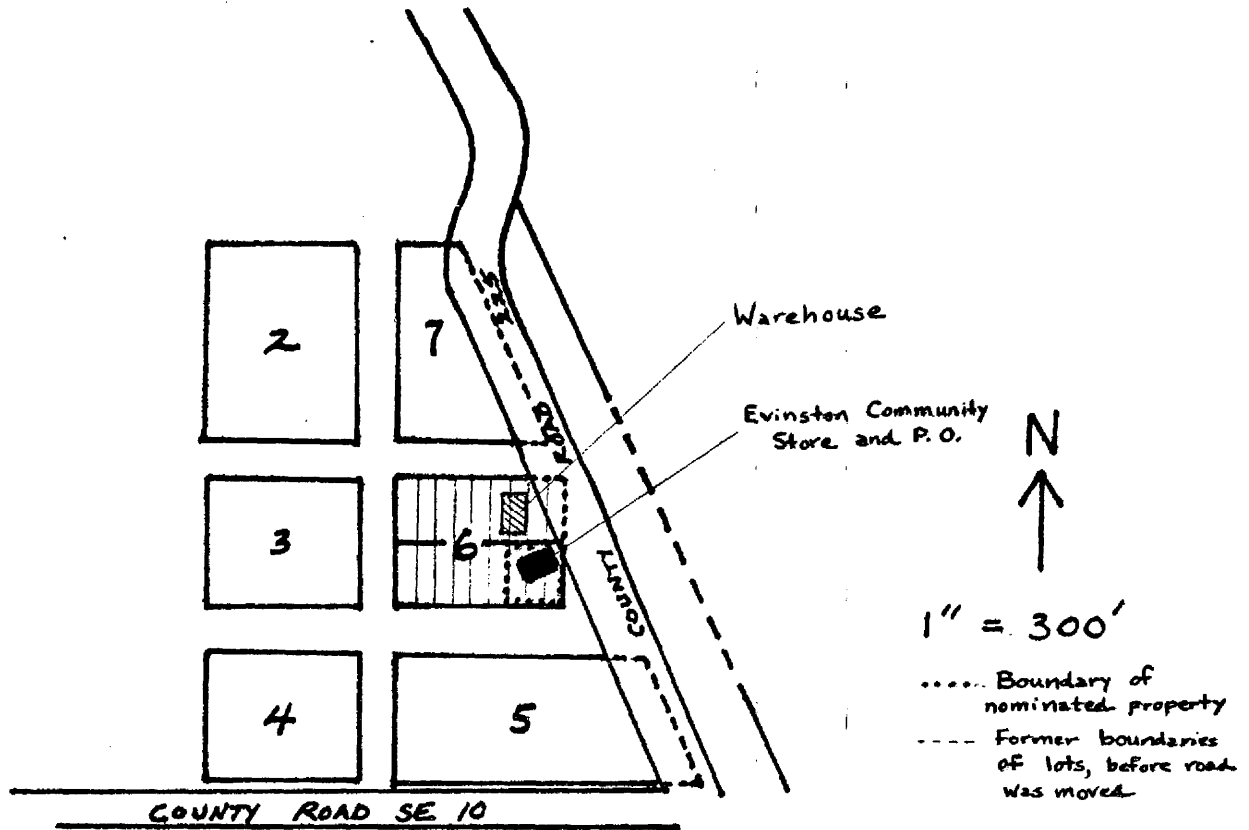
(1 foot = 1/4 inch)

Copy reduced to 74% of original.

→ N

④ → = Photograph # and camera direction





SECTION 32, TOWNSHIP 11 SOUTH, RANGE 21 EAST

BLOCK 6

FROM A MAP PREPARED BY THE ALACHUA COUNTY
PROPERTY APPRAISER, 1985

SITE PLAN

EVINSTON COMMUNITY STORE AND
Post Office

