

UNITED STATES DEPARTMENT OF THE INTERIOR
NATIONAL PARK SERVICE

**NATIONAL REGISTER OF HISTORIC PLACES
PROPERTY PHOTOGRAPH FORM**

FOR NPS USE ONLY

RECEIVED

DEC 12 1978

DATE ENTERED

JUN 4 1979

SEE INSTRUCTIONS IN *HOW TO COMPLETE NATIONAL REGISTER FORMS*
TYPE ALL ENTRIES ENCLOSE WITH PHOTOGRAPH

1 NAME

HISTORIC

Mc Gurk Cabin

AND/OR COMMON

Mc Gurk Cabin

2 LOCATION

CITY, TOWN

Yosemite National Park

—VICINITY OF

Mc Gurk Meadow

COUNTY

Mariposa

STATE

California

3 PHOTO REFERENCE

PHOTO CREDIT National Park Service

Ralph Anderson

DATE OF PHOTO

pre-1957

NEGATIVE FILED AT

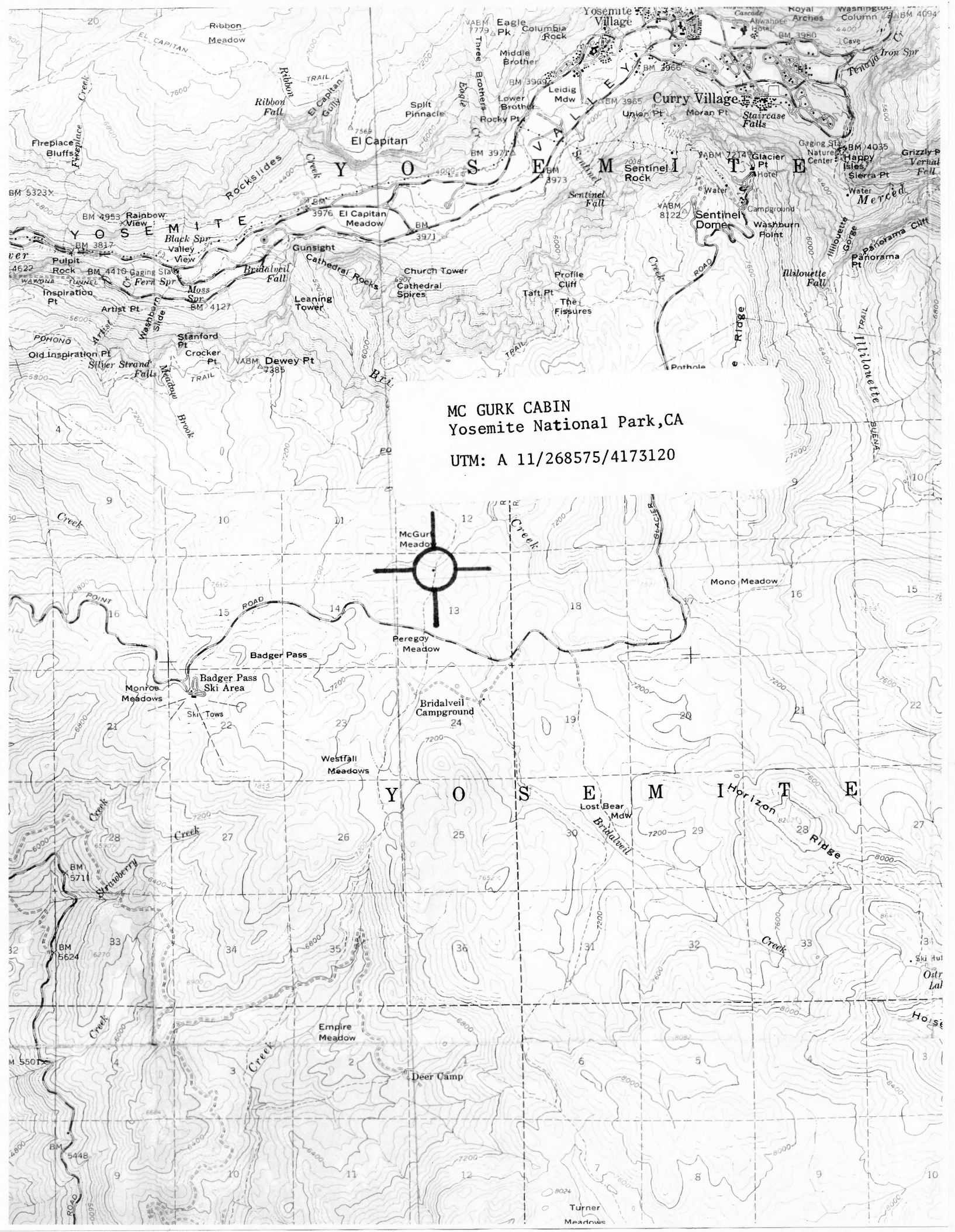
Yosemite National Park Research Library/Box 577/Yosemite Nat'l Pk., CA 95389

4 IDENTIFICATION

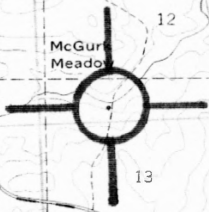
DESCRIBE VIEW, DIRECTION, ETC. IF DISTRICT, GIVE BUILDING NAME & STREET

PHOTO NO 2.

Northeast facade of Mc Gurk cabin prior to stabilization.



MC GURK CABIN
Yosemite National Park, CA
UTM: A 11/268575/4173120



McGurk Meadow

Peregoy Meadow

Badger Pass

Badger Pass Ski Area

Monroe Meadows

Ski Tows

Bridalveil Campground

Westfall Meadows

Yosemite

Lost Bear Mdw

Bridalveil

Empire Meadow

Deer Camp

Turner Meadows

Horizon Ridge

Ostr L

Hoise