

United States Department of the Interior
National Park Service



1091

National Register of Historic Places Registration Form

This form is for use in nominating or requesting determinations for individual properties and districts. See instructions in National Register Bulletin, *How to Complete the National Register of Historic Places Registration Form*. If any item does not apply to the property being documented, enter "N/A" for "not applicable." For functions, architectural classification, materials, and areas of significance, enter only categories and subcategories from the instructions. Place additional certification comments, entries, and narrative items on continuation sheets if needed (NPS Form 10-900a).

1. Name of Property

historic name Antelope Creek Covered Bridge

other names/site number Little Butte Creek Pedestrian Bridge, Jackson County Bridge No. 202

2. Location

street & number Little Butte Creek, 35 feet east of Main Street not for publication

city or town Eagle Point vicinity

state OR code OR county Jackson code 029 zip code 97524

3. State/Federal Agency Certification

As the designated authority under the National Historic Preservation Act, as amended,
I hereby certify that this nomination request for determination of eligibility meets the documentation standards for registering properties in the National Register of Historic Places and meets the procedural and professional requirements set forth in 36 CFR Part 60.

In my opinion, the property meets does not meet the National Register Criteria. I recommend that this property be considered significant at the following level(s) of significance:

national statewide local

[Signature] 10.24.12
Signature of certifying official/Title: Deputy State Historic Preservation Officer Date

Oregon State Historic Preservation Office
State or Federal agency/bureau or Tribal Government

In my opinion, the property meets does not meet the National Register criteria.

Signature of commenting official Date

Title State or Federal agency/bureau or Tribal Government

4. National Park Service Certification

I hereby certify that this property is:

- entered in the National Register determined eligible for the National Register
- determined not eligible for the National Register removed from the National Register
- other (explain) _____

[Signature] 12.26.12
Signature of the Keeper Date of Action

Antelope Creek Covered Bridge
Name of Property

Jackson Co., OR
County and State

5. Classification

Ownership of Property
(Check as many boxes as apply.)

- private
- public - Local
- public - State
- public - Federal

Category of Property
(Check only one box.)

- building(s)
- District
- Site
- Structure
- Object

Number of Resources within Property
(Do not include previously listed resources in the count.)

Contributing	Noncontributing	
		buildings
		district
		site
1		structure
		object
1	0	Total

Name of related multiple property listing
(Enter "N/A" if property is not part of a multiple property listing)

Oregon Covered Bridges (thematic)

Number of contributing resources previously listed in the National Register

1 (see Narrative)

6. Function or Use

Historic Functions
(Enter categories from instructions.)

TRANSPORTATION: Road-related, Bridge
(vehicular)

Current Functions
(Enter categories from instructions.)

TRANSPORTATION: Road Related-Bridge
(bike/pedestrian)

7. Description

Architectural Classification
(Enter categories from instructions.)

OTHER: Bridge, Covered Bridge

Materials
(Enter categories from instructions.)

foundation: CONCRETE: Piers

walls: WOOD

roof: WOOD: Shingle

other: N/A

Antelope Creek Covered Bridge
Name of Property

Jackson Co., OR
County and State

Narrative Description

(Describe the historic and current physical appearance of the property. Explain contributing and noncontributing resources if necessary. Begin with a **summary paragraph** that briefly describes the general characteristics of the property, such as its location, setting, size, and significant features.)

Summary Paragraph

The Antelope Creek Covered Bridge was constructed in 1922 by Jackson County bridge-building brothers Wesley and Lyl Hartman. The bridge is an approximately 59-foot-long queenpost through truss reinforced by kingpost trusses. It has timber framing, a plank deck, vertical board siding, and a cedar shingle roof. Approaches to the bridge are enclosed with horizontal board rails. The west (northwest) approach is preceded by Eagle Point's Veterans Memorial Park. As first built, the bridge was located over Antelope Creek about eight miles southeast of its present location, in Jackson County. The bridge was bypassed in 1975 following the construction of a newer span and left to deteriorate. It was moved on August 30, 1987 to its current location over Little Butte Creek, replacing an earlier covered bridge that had washed away. It currently serves as a pedestrian bridge, primarily for school children, approached through Eagle Point's Veteran's Memorial Park. The bridge was re-sided in 2000 with custom milled siding that replicates its earlier siding in order to be re-nominated for listing in the National Register.

Narrative Description

The Antelope Creek Covered Bridge is a housed, queenpost through truss reinforced by kingpost trusses. The covered span is 58'-9 1/2' in length and its bed is approximately 15 feet wide. Top, bottom and inclined chords are 10 x 12-inch timbers reinforced by metal rods or uprights (queen rods, king rods). The triangular frames of the kingpost trusses support the lengthier queenpost trusses at the center of the span. The framing system of the housing is exposed on the interior. Vertical board siding attached to studs and girts extends to within three feet of the top plate, thus admitting a continuous ribbon of light to the interior and providing for ventilation of the chords and their critical connections the full length of the span. Sway bracing joins studs to struts, or overhead cross members.

The gable roof is covered with cedar shingles and the rafter ends and purlins are exposed at the eaves and gable overhangs. The housing is enclosed at either end with vertical boards cut slightly eccentrically for semi-circular-arched portals. There is no trim. There are interior wainscot returns at each corner that have been extended along the length of the interior for a rail. The deck is 3 x 12-inch planks over a 4 x 12-inch sub floor. On each side facade are three regularly-spaced, wood, exterior knee braces, unenclosed, joined to crossbeam outriggers. Historically, the portal ends were painted white. Siding on the side facades was weathered at the time of the bridge's relocation in 1987. All siding on the bridge is now painted white.

At its original location the bridge rested on concrete abutments. In the present location the bridge is supported by concrete piers, and approach spans with railings extend to pocket abutments on either bank of the creek. The north approach span is 58'-10" in length. The south approach measures 28'-10". Hand railings that were added the length of the interior are 3'-6" in height, which matches the height of railings on the approach spans. The wainscoting of weathered vertical board at each entry has been extended the length of the bridge on the interior, installed on a plywood underlayment. Original fastenings (steel through-bolts) were reused wherever possible. The roof, exterior knee braces, and portions of the longitudinal siding and decking, are in-kind replacements required by deterioration of original members.¹ Electrical interior lighting was introduced for safety and security purposes.

¹ For further discussion see "Alterations."

Antelope Creek Covered Bridge
Name of Property

Jackson Co., OR
County and State

The west side of the bridge, which is the approach from the center of Eagle Point, is entered via the Eagle Point's Veterans Memorial Park. This park is characterized by a split rail fence that encloses the pathway and mature trees in the creek side of the path. On the side facing the main part of the town is a flag pole and large boulders with bronze plaques honoring the veterans of World War I (2006), World War II (2005), the Korean War (2000), the Vietnam War (2007), the Gulf War (2009), Grenada and Somalia (2008), Afghanistan/Iraq (2010), and veterans of all wars (n.d.). Most of the plaques have been donated by service and civic organizations in Eagle Point.

Alterations

The Antelope Creek Covered Bridge underwent some alteration after it was moved to its new site on Little Butte Creek. Most of these changes occurred in 1987 as the bridge was rehabilitated. It was placed on new concrete piers, and new approaches with railings were constructed that emulated the old approaches and railings. The 'return' of vertical plank within each interior end of the bridge was extended along the length of the interior for safety purposes. Today a plywood backing has been added behind the vertical plank rail to reduce its susceptibility to vandalism. Decking was replaced in kind where necessary, and today a central walkway of plywood covers the wood decking so that the bridge is wheel chair-accessible. New siding custom milled to match the historic siding, was added in 2000. In 2007 a new cedar shingle roof was installed. Today electrical lighting discretely placed under the ridge increases the safety of the bridge. Another light was placed under the gable end on the exterior, lighting the sign for the bridge.

Original (1987) replacement materials may be seen in the following table.

Antelope Creek Covered Bridge
 Name of Property

Jackson Co., OR
 County and State

LITTLE BUTTE CREEK FOOT BRIDGE
LIST OF REPLACEMENT MATERIALS
FOR
HISTORICAL MIDSPAN STRUCTURE

<u>NO. ITEMS</u>	<u>ITEM DESCRIPTION</u>	<u>REMARKS</u>
6	6" x 6" wood exterior knee braces.	Deterioration of original members.
32 LF	Interior 6" x 6" wood curbing.	Deterioration of original members at end.
Misc.	3" x 12" wood decking; approximately 100 sq. ft. involved.	Deterioration of original members.
Misc.	1 x 12 exterior boards, to be placed below side openings.	Some original siding missing. Replacements from local 1912 barn.
Misc.	Interior railing with barn boards.	An extension of the existing interior wainscoat returns at each corner; for safety purposes.
Misc.	Rough-sawn side opening perimeter trim.	New.
6 sets	Sheet metal covers for cross beam ends, exterior.	Slightly enlarged over originals for better protection from rain.
Roof Structures	Replacement wood rafters stripping and shingles, all sized per original, except stringers will be 1" x 6" instead of 1" x 4" members (for increased load capability).	Deterioration of original members and roofing.
Interior Lights	Lights inside controlled by photocell.	Required for safety/security.

RLG
 Marquess & Associates, Inc.
 MAI Job No. 1-2838.2
 September 11, 1987

Antelope Creek Covered Bridge
Name of Property

Jackson Co., OR
County and State

8. Statement of Significance

Applicable National Register Criteria

(Mark "x" in one or more boxes for the criteria qualifying the property for National Register listing.)

- A Property is associated with events that have made a significant contribution to the broad patterns of our history.
- B Property is associated with the lives of persons significant in our past.
- C Property embodies the distinctive characteristics of a type, period, or method of construction or represents the work of a master, or possesses high artistic values, or represents a significant and distinguishable entity whose components lack individual distinction.
- D Property has yielded, or is likely to yield, information important in prehistory or history.

Criteria Considerations

(Mark "x" in all the boxes that apply.)

Property is:

- A Owned by a religious institution or used for religious purposes.
- B removed from its original location.
- C a birthplace or grave.
- D a cemetery.
- E a reconstructed building, object, or structure.
- F a commemorative property.
- G less than 50 years old or achieving significance within the past 50 years.

Areas of Significance

(Enter categories from instructions.)

ENGINEERING

Period of Significance

1922, Date of construction

Significant Dates

1922, Date of construction
1965, Date of rehabilitation
1987, Date of move

Significant Person

(Complete only if Criterion B is marked above.)

N/A

Cultural Affiliation

N/A

Architect/Builder

Wesley and Lyal Hartman

Period of Significance (justification)

The Antelope Creek Covered Bridge was constructed in 1922 by county bridge builders Wesley and Lyal Hartman, a date within the 1914-1966 period of significance established by the Oregon Covered Bridges Thematic Nomination.

Criteria Considerations (explanation, if necessary)

The Antelope Creek Covered Bridge was relocated within Jackson County, Oregon from its original location to span Little Butte Creek, within the town of Eagle Point. The bridge retains substantial integrity with respect to

Antelope Creek Covered Bridge

Name of Property

Jackson Co., OR

County and State

its original design and materials and the new site supports the bridge's historic significance, meeting the requirements of Criterion Consideration B for moved properties.

Statement of Significance Summary Paragraph (Provide a summary paragraph that includes level of significance and applicable criteria.)

The Antelope Creek Covered Bridge is significant under Criterion C for its engineering design, at the state level, as documented in the 1979 Oregon Covered Bridges Thematic Nomination.² Its Area of Significance is Engineering and its Period of Significance is 1922, the date of construction. The bridge is an excellent and relatively rare example of a housed, queenpost through truss bridge reinforced by kingpost trusses.³ Although there were three queenpost truss bridges in Jackson County in the early twentieth century, it is a rare type in the state of Oregon, where the covered Howe truss timber bridge is much more common. The two covered bridges over Antelope Creek in existence in 1959 were built by Jackson County bridge-building brothers Wesley and Lyal Hartman. The Hartmans, along with their father Jason, were responsible for building hundreds of bridges in Jackson County in the late nineteenth and early twentieth centuries, including the covered bridges. Use of the queenpost truss appears to be a hallmark of the elder Hartman's work, who supervised his sons. Today it is one of forty-four surviving examples of the estimated 450 covered timber truss bridges that once existed in Oregon.⁴

The bridge displays excellent integrity, retaining its timber structure and metal rod connections, representing its structural design, materials, and workmanship; and its overall form, arched portal openings, clerestory openings, knee braces and outriggers, and exposed purlins and rafters, representing its major design features.⁵ Although the structure has been moved, its current location within the same drainage system and in a park-like setting, which emulates its original semi-rural setting, allows the bridge to meet Criterion Exception B. Thus, the bridge retains integrity of design, setting, materials, workmanship, feeling, and association.

The bridge was listed in 1979 as part of the 1979 Oregon Covered Bridges Thematic Nomination. It was delisted in 1988. The purpose of this nomination is to again list the bridge on the National Register of Historic Places.

Narrative Statement of Significance (Provide at least one paragraph for each area of significance.)

From the time of its construction by Jackson County in 1922 until 1987, the Antelope Creek Covered Bridge spanned Antelope Creek at its historic location roughly eight miles southeast of Eagle Point in Jackson County, Oregon. The bridge was built by the Hartman brothers, Wesley and Lyal, who along with their father are legends in Jackson County bridge-building history. Their father Jason came to Jackson County and began working for the County bridge department in the 1890s, building hand-hewn timber bridges. His sons began working for the County in February 1919, building every kind of bridge required by the County, including its covered bridges. A 1959 newspaper story on the brothers stated that they had worked for the County for 40 years and had built well over 500 bridges by that time. They built both covered bridges over Antelope Creek, which are pictured under construction in the newspaper article (see Figure 4).⁶

² The forty-six covered bridges included in the 1979 thematic group nomination are significant to Oregon and to the nation as a whole as representative examples of a long-lived bridge-building tradition which, in Oregon at least, has continued to the present day" (Potter, 1979).

³ "Although there are a few examples of queen and king post trusses, the predominant truss type, by far, is the Howe truss" (Potter, 1979, Section 7, Page 2).

⁴ Of the fifty-six covered bridges surveyed in 1979, forty-six remain extant.

⁵ Note that some materials, including portions of the wood deck, the siding, and the braces and outriggers, have been replaced in kind.

⁶ Bob Vroman, "Hartmans Built County's Early-Day Bridges," *Mail Tribune*, Medford, OR, July 19, 1959, p. 12. Judging from the fact that three of Oregon's four queenpost bridges identified in the 1979 survey were in Jackson County, it would appear that this type of bridge was a hallmark of the work of Jason Hartman.

Antelope Creek Covered Bridge

Name of Property

Jackson Co., OR

County and State

The bridge was originally constructed over Antelope Creek, eight miles southeast of its present location on Little Butte Creek, although within the same Rogue River drainage.⁷ The bridge was bypassed by a modern road in 1965. As its condition deteriorated, plans were made to move the bridge to Little Butte Creek in Eagle Point, which had lost its covered bridge earlier when it washed away. The bridge was moved on August 30, 1987 and placed in its current location, where it serves as a pedestrian bridge for children walking from the town to the schools on the opposite side of the creek. Like its location on Antelope Creek, its present location is parallel to a modern vehicular bridge. Located in a park-like setting, which effectively emulates its earlier semi-rural setting, the moved bridge meets Criterion Exception B.

The Antelope Creek Covered Bridge meets National Register Criterion C, notwithstanding its relocation within the drainage system it historically occupied, because it continues to possess the distinctive characteristics of design and construction that caused it to be listed as part of the State's covered bridge themed nomination in 1979. No substitutions of fabric were made in the main structural framework. The housing precisely conforms to its historic configuration, having been reconstructed of original fabric and like-kind replacement material where original fabric was unsalvageable due to dry rot, with the exception of the siding along the length of the bridge, which was replaced in kind. A schedule of material replacements that occurred in 1987 and their justification, with the exception of the siding, appears at the end of Section 7.

The Antelope Creek Covered Bridge is one of three historic housed timber truss spans remaining in Jackson County, and one of forty-four such bridges now standing in the state.⁸ Within this resource group it is distinctive as one of only three extant queenpost through trusses, two of which are to be found in Jackson County.⁹ The Howe truss is by far the predominant truss type represented in standing examples statewide, making this resource relatively unique. The Antelope Creek Covered Bridge also is among the older standing examples, having been erected in the early automobile age when road widths were narrower, under 20 feet. The standing covered spans in Jackson County were constructed between 1917 and 1927 under supervision of the County bridge foreman, Jason Hartman.

The Antelope Creek Covered Bridge is of statewide significance as a distinctive representative of a long-lived bridge-building tradition in Oregon. Because it is a timber-abundant state characterized by a myriad of drainage systems and a rainy climate in its mountainous western region, Oregon became the area of heaviest covered bridge construction activity west of the Mississippi River. At the height of this activity, Oregon is believed to have had 450 housed timber spans. The 'youngest' of the type were built in the 1960s. The oldest standing today was erected in 1914. The bridge's historic period of significance is 1922, the date of its construction. This is consistent with as it is within the Period of Significance established by the Oregon Covered Bridges Thematic Nomination, which is 1914 to 1966.¹⁰

The practice of putting housings on spans evolved to protect wooden truss members and their critical fastenings from deterioration, which would occur more rapidly if these features were wholly exposed to the weather. After World War II, construction of the modern highway system, with its wider road-width and straighter alignment standards, caused the number of covered bridges to decline rapidly. Housed timber trusses were also rendered obsolete at this time by development of the means to extend the usable life of pre-cut timbers by pressure-treating them with creosote or chemical treatment with Wolmanized salts. Additionally, steel and concrete became increasingly economical for long spans in the post-war years, as well as affording both longer life and greater adaptability in design to the requirements of the modern highway system.

⁷ Antelope Creek and Little Butte Creek join the Rogue River a very short distance from each other.

⁸ Note that the Wimer Covered Bridge in Jackson County was demolished in 2006. Of the 56 covered bridges listed in the 1979 Thematic Nomination, 44 are still extant.

⁹ Three of the four historic covered bridges in Jackson County were queenpost bridges; one, the Wimer Bridge, was demolished in 2006.

¹⁰ Elizabeth Walton Potter, et. al., National Register Inventory-Nomination Form, June 1979. *Oregon Covered Bridges TR.*

Antelope Creek Covered Bridge

Name of Property

Jackson Co., OR

County and State

The nominated bridge was erected at a time when the Oregon State Highway Department had begun to encourage standardization of covered spans. State Bridge Engineer C. B. McCullough had issued a drawing for a standard 150-foot Howe Truss in 1920, no doubt in conformance with guidelines promulgated by the Bureau of Public Roads. The drawing was made available to county engineers and local contractors, who either adapted the design or used it in its entirety. The nominated bridge was not patterned after the standard, however. Jackson County bridge foreman Jason Hartman appears to have adhered to an older, more traditional queenpost truss type for the comparatively short spans required to bridge Lost Creek (1919) and Antelope Creek (1922). Hartman also erected a queenpost through truss span of 85 feet over Evans Creek at Wimer as late as 1927 (no longer extant).¹¹

Covered bridges are no longer utilized on the state road system because they are incompatible with modern transportation standards for loading and capacity. Therefore, many covered bridges have historically been bypassed, demolished, or moved to allow for the construction of modern road systems. The bridges that remain in the state are mostly distinguished by low-volume use on local transportation routes. Because of this, the remaining bridges are often in locations away from highly urbanized areas, the result being that the remaining bridges are characterized as resources that are found in countryside locations away from the hustle and bustle of modern life. While the Antelope Creek Covered Bridge is in an urban setting, it is sited within a park along Little Butte Creek, which contributes to the sense that the bridge is separate from its small-town setting.

Another salient feature that is shared by the bridges of the Oregon Covered Bridges Thematic Nomination, and continues to be a feature of the Antelope Creek Covered Bridge, is the reliance on timber truss construction. This bridge not only retains its important timber truss, it is a relatively rare truss type in Oregon timber bridge history, raising its level of significance.

Developmental history/additional historic context information (if appropriate)

Following a comprehensive refurbishment in 1965, the Antelope Creek Covered Bridge was by-passed and closed to traffic. Twenty years after its last major maintenance episode, evidence of dry rot and general deterioration was extensive. The citizens of Eagle Point raised funds and, with the concurrence and support of Jackson County and the City, relocated the by-passed bridge to downtown Eagle Point on August 30, 1987 for use as a pedestrian crossing over Little Butte Creek. Consulting engineers for the relocation were Marquess & Associates, Inc. of Medford (R.L. Gantenbein, Jr., P.E.). The project foreman was local builder Bud Bowling. In its new setting, the bridge serves chiefly foot traffic to and from public schools on the south side of Little Butte Creek. Because Antelope Creek is a tributary to Little Butte Creek, the bridge remains in the drainage system in which it was historically located, which is the Rogue River drainage.

In 1987 the bridge truss and framing system was moved as a whole, and salvageable exterior siding was keyed for reuse. The housing was reconstructed using only original fabric and such like-kind material replacements as were strictly necessary. When re-assembled at the Little Butte Creek site in Eagle Point, arched openings were added on the side facades for surveillance and safety purposes, based on the model provided by Douglas County's Rochester Covered Bridge. Following completion of the approach spans and walkway, the relocated bridge was dedicated and officially opened to pedestrian traffic on December 5, 1987. It was awarded a Historic Preservation Award by the Southern Oregon Historical Society in June of 1988.

A nomination was prepared in September 1987 for re-listing the bridge after its move and forwarded to the Keeper on February 1, 1988. The nomination was not approved, primarily because of the window openings cut into the side walls of the bridge. In 2000 the City of Eagle Point replaced the siding on the side facades. The new siding, which is 1" x 8" Douglas Fir shiplap siding, was rough cut by a local mill, Oregon West

¹¹ The Wimer Covered Bridge was patterned after the Antelope Creek Covered Bridge.

Antelope Creek Covered Bridge
Name of Property

Jackson Co., OR
County and State

Lumber, based on the historic siding with identical dimensions and profiles. The bridge was then re-sided to restore its historic appearance.

The Antelope Creek Covered Bridge represents a class of resources developed by county governments at a time when the local economy depended upon an adequate trade and market network. County roads supplemented main highways by providing a system for transporting market goods and delivering natural resources to manufacturing sites. Jackson County has long counted agriculture and lumbering among its base industries. The bridge, in both its historic and present location, represents a time past when these bridges were essential to the local economy and whose engineering design, particularly the housing, evolved to protect the life of the resource and therefore the health of the economy.

In order to document this increasingly rare resource the Oregon State Historic Preservation Office, with assistance from members of the Covered Bridge Society of Oregon and the Oregon Department of Transportation, surveyed and inventoried the fifty-six covered bridges standing in 1979. They nominated forty-six of them, including this bridge, for inclusion in the National Register under a multiple property submittal, the Oregon Covered Bridges Thematic Nomination. That document recognized the importance of the covered bridge form in the development of Oregon's transportation system during the nineteenth and twentieth centuries, and continues its mission to protect these significant historic resources, of which this bridge is an excellent example

9. Major Bibliographical References

Bibliography

- Cockrell, Nick, and Bill Cockrell, *Roofs Over Rivers: A Guide to Oregon's Covered Bridges*, (Beaverton, Oregon: The Touchstone Press, 1978), p. 26.
- "Covered Bridges in Jackson County," Draft Five Year Capital Improvement Program," July 1, 1979, Jackson County Public Works Department, p. 64.
- Leeuwenburgh, Walt, Jackson County Department of Public Works Bridge Engineer, informed the State Historic Preservation Office that each of the covered span presenting standing in Jackson County was constructed by County bridge foreman Jason Harman. Telephone communication, February 1, 1988.
- Nelson, Lee H., "A Century of Oregon Covered Bridges, 1851-1952," *Oregon Historical Quarterly*, Vo. 61, No. 2 (June 1960), 101-209.
- Potter, Elizabeth, et. Al., National Register Inventory-Nomination Form, June 1979. *Oregon Covered Bridges TR*. Antelope Creek Covered Bridge, Inventory #12, was listed in the National Register as part of this thematic nomination on November 29, 1979.
- Smith, Dwight A., James B. Norman, and Pieter T. Dykman, *Historic Highway Bridges of Oregon*, (Salem, Oregon: Oregon Department of Transportation Environmental Section, 1985).
- Vroman, Bob, "Hartmans Built County's Early-Day Bridges," *Mail Tribune*, Medford, OR, July 19, 1959, p. 12.

Previous documentation on file (NPS):

- preliminary determination of individual listing (36 CFR 67 has been requested)
- previously listed in the National Register
- previously determined eligible by the National Register
- designated a National Historic Landmark
- recorded by Historic American Buildings Survey # _____
- recorded by Historic American Engineering Record # _____
- recorded by Historic American Landscape Survey # _____

Primary location of additional data:

- State Historic Preservation Office
- Other State agency
- Federal agency
- Local government
- University
- Other
- Name of repository: South Oregon Historical Society

Antelope Creek Covered Bridge
Name of Property

Jackson Co., OR
County and State

Historic Resources Survey Number (if assigned):

10. Geographical Data

Acreage of Property Less than one acre
(Do not include previously listed resource acreage.)

UTM References

(Place additional UTM references on a continuation sheet.)

1	<u>10</u> Zone	<u>516510</u> Easting	<u>4702010</u> Northing	3	<u> </u> Zone	<u> </u> Easting	<u> </u> Northing
2	<u> </u> Zone	<u> </u> Easting	<u> </u> Northing	4	<u> </u> Zone	<u> </u> Easting	<u> </u> Northing

Verbal Boundary Description (Describe the boundaries of the property.)

Beginning at a point marked by a brass disk at the northwest corner of Jackson County Bridge #7001, thence in a southeasterly direction approximately 50 feet to the point of intersection with the line of a right-of-way easement conveyed by Edgar A. Dahack to the City of Eagle Point on September 14, 1987, which intersection is the true point of beginning; thence northeasterly along said right-of-way easement line approximately 63 feet, thence southeasterly in a line parallel with the long axis of Jackson County Bridge #700 approximately 181 feet, thence southwesterly approximately 55 feet to the point of intersection with the easterly right-of-way line of Jackson County Bridge #7001, thence northwesterly along said bridge right-of-way line to the true point of beginning, containing in all .22 acres, more or less.

Boundary Justification (Explain why the boundaries were selected.)

The nominated area contains the entire Antelope Creek Covered Bridge structure, as built in 1922 and re-constructed using original structural elements on this site in 1987.

11. Form Prepared By

name/title Diana Painter, Architectural Historian
organization Oregon State Historic Preservation Office date August 20, 2012
street & number 725 Summer Street NE, Suite C telephone (503) 986-0668
city or town Salem state OR zip code 97301-1266
e-mail Diana.Painter@state.or.us

Additional Documentation

Submit the following items with the completed form:

- **Maps:** A **USGS map** (7.5 or 15 minute series) indicating the property's location.

A **Sketch map** for historic districts and properties having large acreage or numerous resources. Key all photographs to this map.

**United States Department of the Interior
National Park Service**

**National Register of Historic Places
Continuation Sheet**

Antelope Creek Covered Bridge
Name of Property
Jackson County, OR
County and State
Oregon Covered Bridges Thematic MPS
Name of multiple listing (if applicable)

Section number 10 Page 2

Latitude/Longitude Coordinates

(Follow similar guidelines for entering the lat/long coordinates as describe on page 55, *How to Complete the National Register Registration Form* for entering UTM references. For properties less than 10 acres, enter the lat/long coordinates for a point corresponding to the center of the property. For properties of 10 or more acres, enter three or more points that correspond to the vertices of a polygon drawn on the map. The polygon should approximately encompass the area to be registered. Add additional points below, if necessary.)

Datum if other than WGS84: _____
(enter coordinates to 6 decimal places)

- 1. Latitude: 42.47025 Longitude: -122.79916
- 2. Latitude: Longitude:
- 3. Latitude: Longitude:
- 4. Latitude: Longitude:



Antelope Creek Covered Bridge
Name of Property

Jackson Co., OR
County and State

- **Continuation Sheets**
- **Additional items:** (Check with the SHPO or FPO for any additional items.)

Photographs:

Submit clear and descriptive photographs. The size of each image must be 1600x1200 pixels at 300 ppi (pixels per inch) or larger. Key all photographs to the sketch map.

Name of Property: Antelope Creek Covered Bridge

City or Vicinity: Eagle Point

County: Jackson **State:** Oregon

Photographer: Diana Painter/Kenneth Gunn

Date Photographed: August 2012

Description of Photograph(s) and number:

- 1 of 14** OR_JacksonCounty_AntelopeCreekCoveredBridge_0001
Approach to Antelope Creek Covered Bridge from town, looking south (southeast)
- 2 of 14** OR_JacksonCounty_AntelopeCreekCoveredBridge_0002
South (rear) face of bridge, looking north (northwest)
- 3 of 14** OR_JacksonCounty_AntelopeCreekCoveredBridge_0003
West side façade as seen from neighboring bridge
- 4 of 14** OR_JacksonCounty_AntelopeCreekCoveredBRidge_0004
West side façade, looking east
- 5 of 14** OR_JacksonCounty_AntelopeCreekCoveredBRidge_0005
North (front) and east side façade, looking south
- 6 of 14** OR_JacksonCounty_AntelopeCreekCoveredBRidge_0006
Interior view showing truss, railing, and decking
- 7 of 14** OR_JacksonCounty_AntelopeCreekCoveredBridge_0007
Interior view showing purlins, exposed rafter ends, and clerestory openings
- 8 of 14** OR_JacksonCounty_AntelopeCreekCoveredBridge_0008
East façade showing outriggers and braces
- 9 of 14** OR_JacksonCounty_AntelopeCreekCoveredBridge_0009
Truss detail showing metal queenpost rod
- 10 of 14** OR_JacksonCounty_AntelopeCreekCoveredBridge_0010
Bridge setting, looking south
- 11 of 14** OR_JacksonCounty_AntelopeCreekCoveredBridge_0011
Bridge setting, looking northwest towards town
- 12 of 14** OR_JacksonCounty_AntelopeCreekCoveredBridge_0012
Overview of bridge and Veterans Memorial Park, looking south

Antelope Creek Covered Bridge
Name of Property

Jackson Co., OR
County and State

- 13 of 14** OR_JacksonCounty_AntelopeCreekCoveredBridge_0013
Overview of Veterans Memorial Park, looking south
- 14 of 14** OR_JacksonCounty_AntelopeCreekCoveredBridge_0014
Detail of Veterans Memorial Park showing plaques, looking south

Property Owner: (Complete this item at the request of the SHPO or FPO.)

name City of Eagle Point Attn: Mike Upston, Principal Planner

street & number 17 Buchanan Ave South telephone (541) 826-4212, ext 111

city or town Eagle Point state OR zip code 97501

Paperwork Reduction Act Statement: This information is being collected for applications to the National Register of Historic Places to nominate properties for listing or determine eligibility for listing, to list properties, and to amend existing listings. Response to this request is required to obtain a benefit in accordance with the National Historic Preservation Act, as amended (16 U.S.C.460 et seq.).

Estimated Burden Statement: Public reporting burden for this form is estimated to average 18 hours per response including time for reviewing instructions, gathering and maintaining data, and completing and reviewing the form. Direct comments regarding this burden estimate or any aspect of this form to the Office of Planning and Performance Management, U.S. Dept. of the Interior, 1849 C. Street, NW, Washington, DC.

United States Department of the Interior
National Park Service

National Register of Historic Places Continuation Sheet

Antelope Creek Covered Bridge

Name of Property
Jackson County, OR

County and State
Oregon Covered Bridges Thematic MPS
Name of multiple listing (if applicable)

Section number Additional Documentation Page 14

LIST OF FIGURES

Maps

1. Regional location map for Antelope Creek Covered Bridge
2. Vicinity map for Antelope Creek Covered Bridge

Figures

1. 1987 site plan for Antelope Creek Covered Bridge in Eagle Point
2. 1987 bridge plan for Antelope Creek Covered Bridge
3. Original covered bridge over Little Butte Creek (n.d.)
4. Historic photos of Antelope Creek Covered Bridges under construction
5. Antelope Creek Covered Bridge in its original location, 1976
6. Antelope Creek Covered Bridge in its original location, showing internal rail and truss, 1987
7. Antelope Creek Covered Bridge in original location, showing relationship to new bridge, 1988
8. Antelope Creek Covered Bridge in original location, showing truss, deck, and siding, 1987
9. Moving the Antelope Creek Covered Bridge, 1987
10. Antelope Creek Covered Bridge in new location, showing truss, deck and siding, 1987
11. Antelope Creek Covered Bridge in new location, looking northwest, 1987
12. Antelope Creek Covered Bridge in new location, looking south, 1987; note location of new bridge and openings in side facades
13. Diagram of king post and queen post trusses

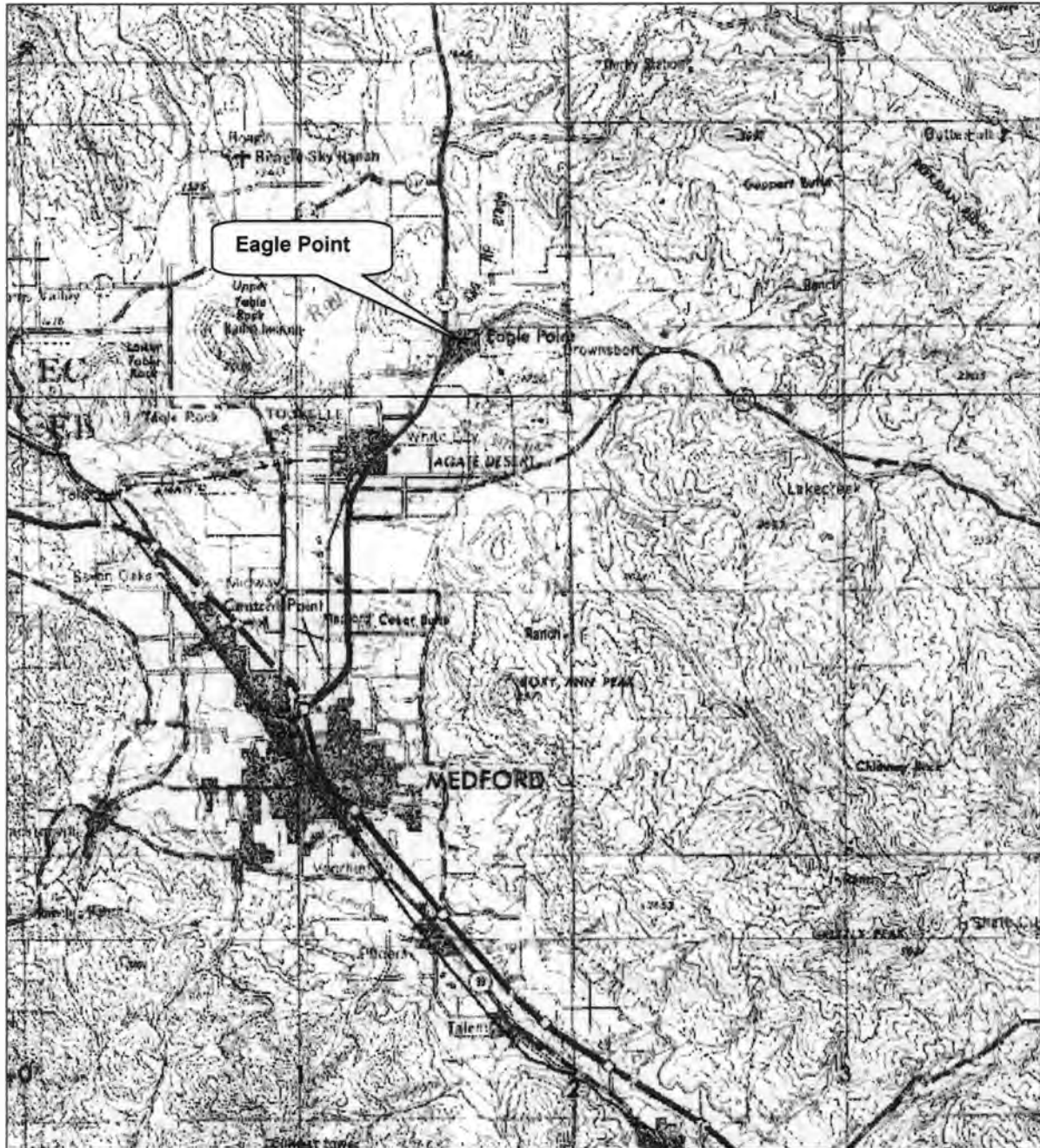
United States Department of the Interior
National Park Service

Antelope Creek Covered Bridge
Name of Property
Jackson County, OR
County and State
Oregon Covered Bridges Thematic MPS
Name of multiple listing (if applicable)

National Register of Historic Places Continuation Sheet

Section number Additional Documentation Page 15

Map 1. Regional location map for Antelope Creek Covered Bridge



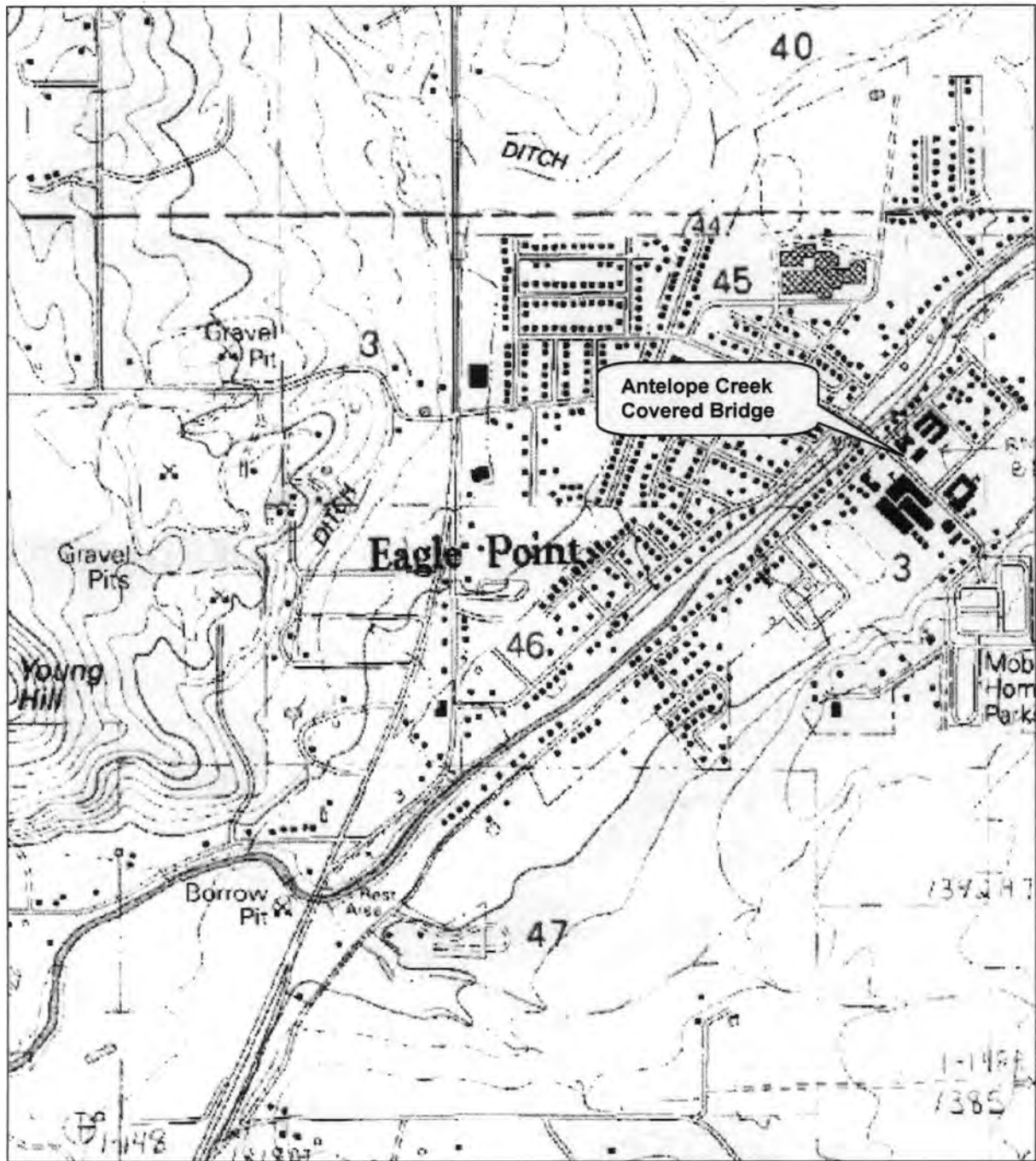
United States Department of the Interior
National Park Service

National Register of Historic Places Continuation Sheet

Antelope Creek Covered Bridge
Name of Property
Jackson County, OR
County and State
Oregon Covered Bridges Thematic MPS
Name of multiple listing (if applicable)

Section number Additional Documentation Page 16

Map 2. Vicinity map for Antelope Creek Covered Bridge



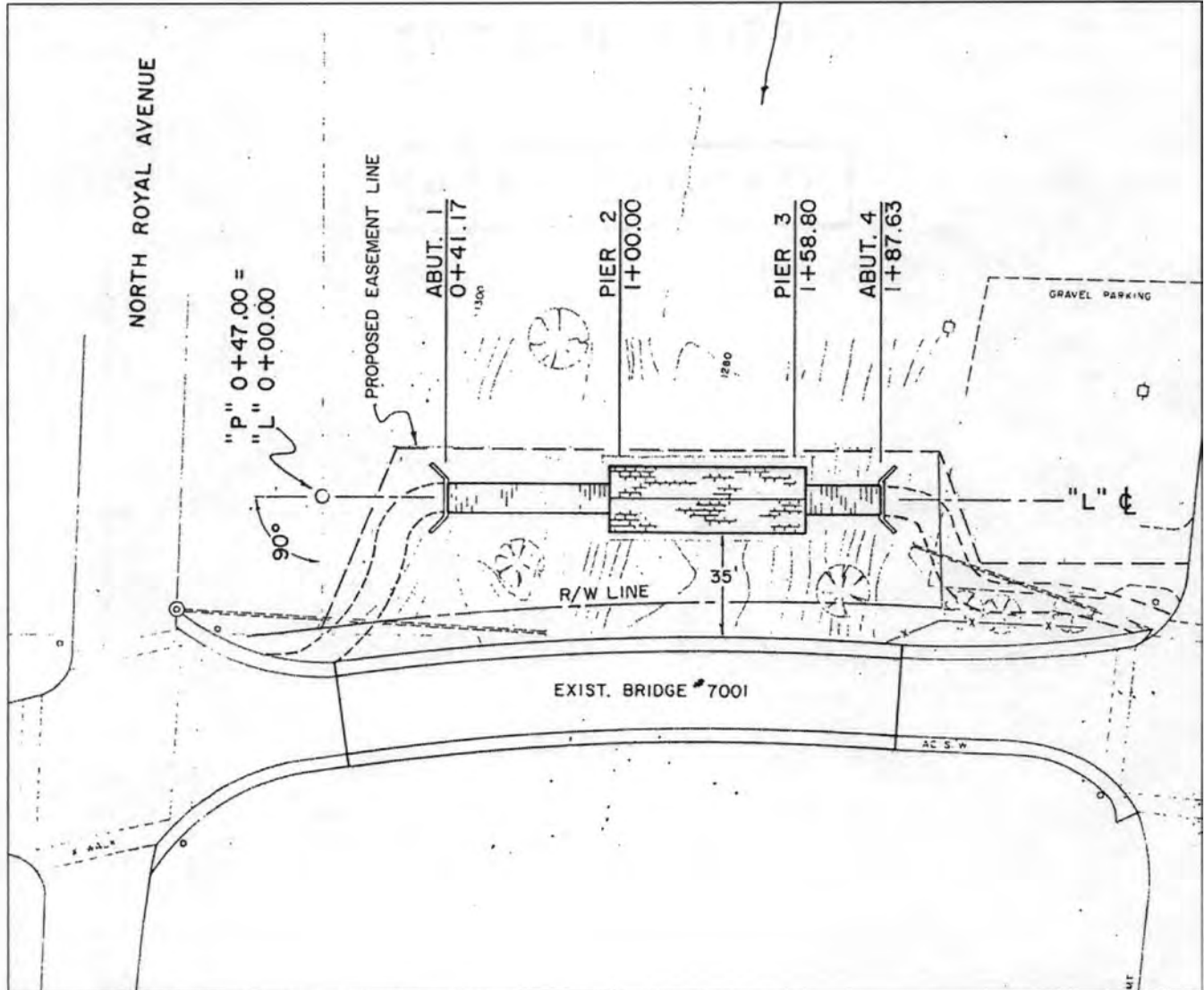
United States Department of the Interior
National Park Service

Antelope Creek Covered Bridge
Name of Property
Jackson County, OR
County and State
Oregon Covered Bridges Thematic MPS
Name of multiple listing (if applicable)

National Register of Historic Places Continuation Sheet

Section number Additional Documentation Page 17

Figure 1. 1987 site plan for Antelope Creek Covered Bridge in Eagle Point



Marquess & Associates, Inc.

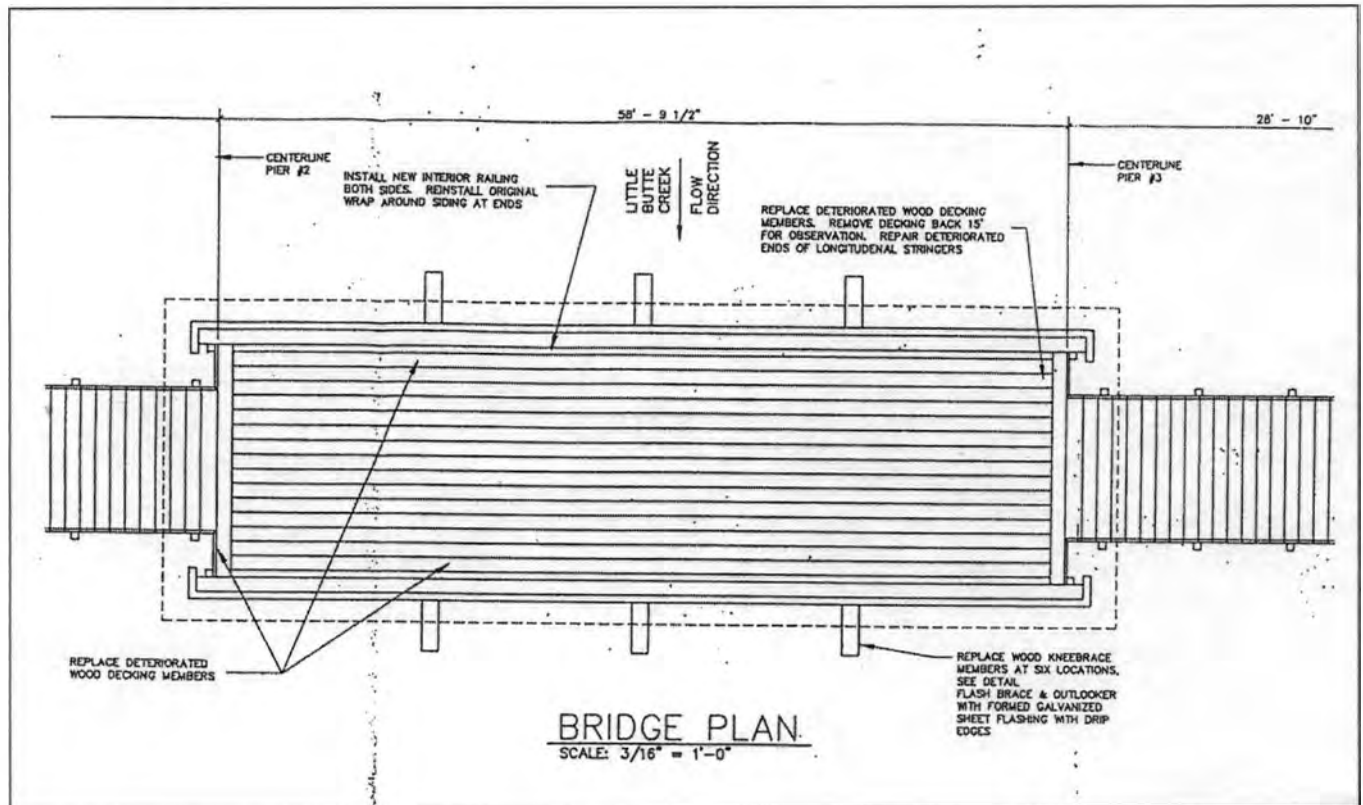
United States Department of the Interior
National Park Service

Antelope Creek Covered Bridge
Name of Property
Jackson County, OR
County and State
Oregon Covered Bridges Thematic MPS
Name of multiple listing (if applicable)

National Register of Historic Places Continuation Sheet

Section number Additional Documentation Page 18

Figure 2. 1987 bridge plan for Antelope Creek Covered Bridge



Marquess & Associates, Inc.

United States Department of the Interior
National Park Service

National Register of Historic Places Continuation Sheet

Antelope Creek Covered Bridge
Name of Property
Jackson County, OR
County and State
Oregon Covered Bridges Thematic MPS
Name of multiple listing (if applicable)

Section number Additional Documentation Page 19

Figure 3. Original covered bridge over Little Butte Creek (n.d.)



Courtesy Bob Russell, Butte Creek Mill

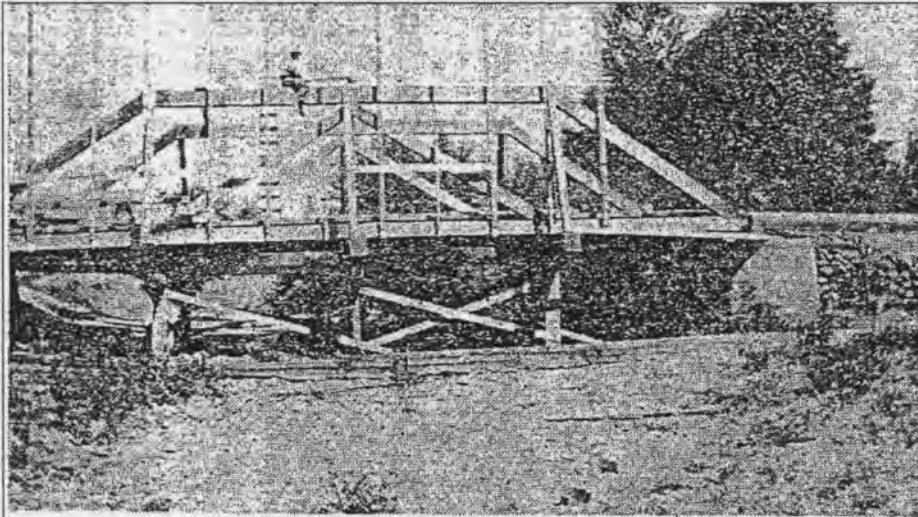
United States Department of the Interior
National Park Service

National Register of Historic Places
Continuation Sheet

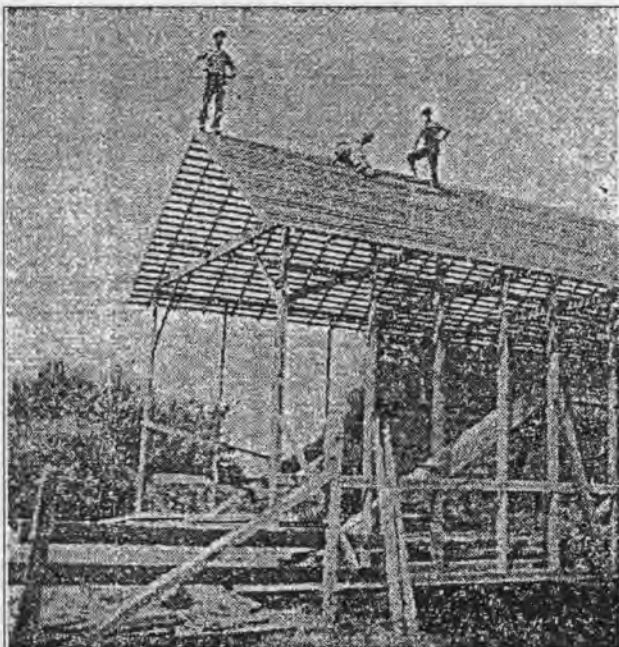
Antelope Creek Covered Bridge
Name of Property Jackson County, OR
County and State Oregon Covered Bridges Thematic MPS
Name of multiple listing (if applicable)

Section number Additional Documentation Page 20

Figure 4. Historic photos of Antelope Creek Covered Bridges under construction



ANTELOPE BRIDGE—In 1922, the Hartman brothers and a small crew erected the covered bridge over Antelope creek, which, along with its “twin” in the same area, are still used. Lyal is shown above, astride the top beam, as he is tightening a nut with the big rachet wrench.



FRAMEWORK—The men above are working on the roof of the Antelope creek bridge, which was built by the county in 1922. Covers over the bridges added little to their strength, but protected timbers from exposure to weather and made them last years longer.

Source: *Mail Tribune*, July 19, 1959

United States Department of the Interior
National Park Service

National Register of Historic Places Continuation Sheet

Antelope Creek Covered Bridge
Name of Property
Jackson County, OR
County and State
Oregon Covered Bridges Thematic MPS
Name of multiple listing (if applicable)

Section number Additional Documentation Page 21

Figure 5. Antelope Creek Covered Bridge in its original location, 1976



Courtesy Nick and Bill Cockrell

United States Department of the Interior
National Park Service

National Register of Historic Places Continuation Sheet

Antelope Creek Covered Bridge
Name of Property
Jackson County, OR
County and State
Oregon Covered Bridges Thematic MPS
Name of multiple listing (if applicable)

Section number Additional Documentation Page 22

Figure 6. Antelope Creek Covered Bridge in its original location, showing internal rail and truss, 1987



Courtesy Southern Oregon Historical Society

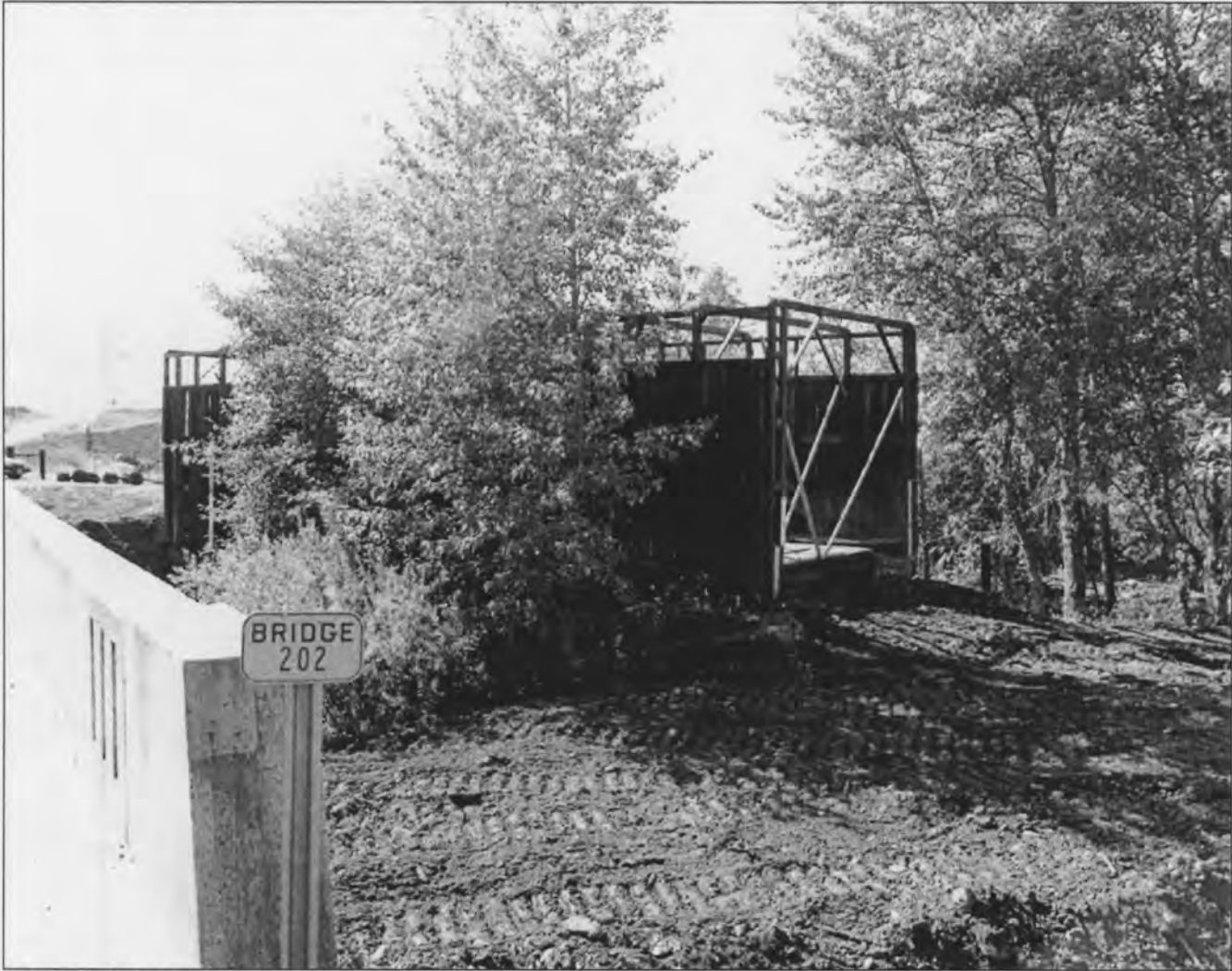
United States Department of the Interior
National Park Service

National Register of Historic Places Continuation Sheet

Antelope Creek Covered Bridge
Name of Property
Jackson County, OR
County and State
Oregon Covered Bridges Thematic MPS
Name of multiple listing (if applicable)

Section number Additional Documentation Page 23

Figure 7. Antelope Creek Covered Bridge in original location, showing relationship to new bridge, 1988



Courtesy Southern Oregon Historical Society

United States Department of the Interior
National Park Service

**National Register of Historic Places
Continuation Sheet**

Antelope Creek Covered Bridge
Name of Property
Jackson County, OR
County and State
Oregon Covered Bridges Thematic MPS
Name of multiple listing (if applicable)

Section number Additional Documentation Page 24

Figure 8. Antelope Creek Covered Bridge in original location, showing truss, deck and siding, 1987



Courtesy Southern Oregon Historical Society

United States Department of the Interior
National Park Service

National Register of Historic Places Continuation Sheet

Antelope Creek Covered Bridge
Name of Property
Jackson County, OR
County and State
Oregon Covered Bridges Thematic MPS
Name of multiple listing (if applicable)

Section number Additional Documentation Page 25

Figure 9. Moving the Antelope Creek Covered Bridge, 1987



Courtesy Southern Oregon Historical Society

United States Department of the Interior
National Park Service

National Register of Historic Places Continuation Sheet

Antelope Creek Covered Bridge
Name of Property
Jackson County, OR
County and State
Oregon Covered Bridges Thematic MPS
Name of multiple listing (if applicable)

Section number Additional Documentation Page 26

Figure 10. Antelope Creek Covered Bridge in new location, showing truss, deck and siding, 1987



Courtesy Southern Oregon Historical Society

United States Department of the Interior
National Park Service

Antelope Creek Covered Bridge
Name of Property
Jackson County, OR
County and State
Oregon Covered Bridges Thematic MPS
Name of multiple listing (if applicable)

National Register of Historic Places Continuation Sheet

Section number Additional Documentation Page 27

Figure 11. Antelope Creek Covered Bridge in new location, looking northwest, 1987



Courtesy Southern Oregon Historical Society

United States Department of the Interior
National Park Service

National Register of Historic Places Continuation Sheet

Antelope Creek Covered Bridge
Name of Property
Jackson County, OR
County and State
Oregon Covered Bridges Thematic MPS
Name of multiple listing (if applicable)

Section number Additional Documentation Page 28

Figure 12. Antelope Creek Covered Bridge in new location, looking south, 1987; note location of new bridge and openings in side facades



Courtesy Southern Oregon Historical Society

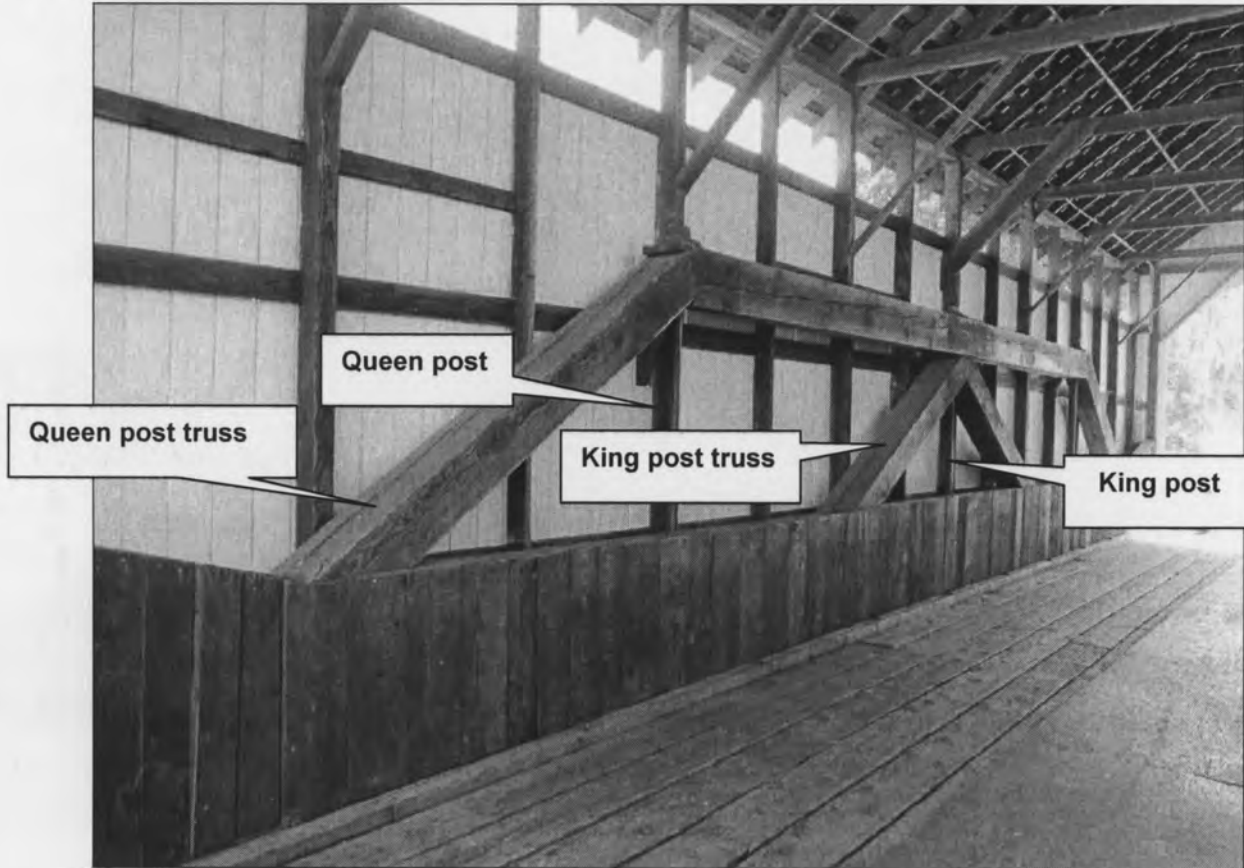
United States Department of the Interior
National Park Service

National Register of Historic Places Continuation Sheet

Antelope Creek Covered Bridge
Name of Property
Jackson County, OR
County and State
Oregon Covered Bridges Thematic MPS
Name of multiple listing (if applicable)

Section number Additional Documentation Page 29

Figure 13. Diagram of king post and queen post trusses



UNITED STATES DEPARTMENT OF THE INTERIOR
NATIONAL PARK SERVICE

NATIONAL REGISTER OF HISTORIC PLACES
EVALUATION/RETURN SHEET

REQUESTED ACTION: NOMINATION

PROPERTY Antelope Creek Covered Bridge
NAME:

MULTIPLE Oregon Covered Bridges TR
NAME:

STATE & COUNTY: OREGON, Jackson

DATE RECEIVED: 11/09/12 DATE OF PENDING LIST: 12/14/12
DATE OF 16TH DAY: 12/31/12 DATE OF 45TH DAY: 12/26/12
DATE OF WEEKLY LIST:

REFERENCE NUMBER: 12001091

REASONS FOR REVIEW:

APPEAL: N DATA PROBLEM: N LANDSCAPE: N LESS THAN 50 YEARS: N
OTHER: N PDIL: N PERIOD: N PROGRAM UNAPPROVED: N
REQUEST: Y SAMPLE: N SLR DRAFT: N NATIONAL: N

COMMENT WAIVER: N

ACCEPT RETURN REJECT 12/26/12 DATE

ABSTRACT/SUMMARY COMMENTS:

*1922 bridge was moved to nearby creek location.
retains engineering integrity - green post
through truss reinforced by King post trusses.
Related as part of the Oregon Covered Bridge thematic
nomination*

RECOM./CRITERIA C

REVIEWER [Signature]

DISCIPLINE [Signature]

TELEPHONE _____

DATE 12/26/12

DOCUMENTATION see attached comments Y/N see attached SLR Y/N

If a nomination is returned to the nominating authority, the nomination is no longer under consideration by the NPS.



Photo 1 of 14: Antelope Creek Covered
Bridge, Jackson Co., OR

2531000 15/28 OR_JacksonCounty_0001_00

Zeller <1> 10/24/12



Photo 2 of 14: Antelope Creek Covered Bridge
Jackson Co., OR

2531000 16/28 OR JacksonCounty_0002_00

Zeller <2> 10/24/12



Photo 3 of 14: Antelope Creek Covered Bridge
Jackson Co., OR

2531000 17/28 OR_JacksonCounty_0003_00

Zeller (3) 10/24/12



Photo 4 of 14: Antelope Creek Covered Bridge
Jackson Co., OR

2531000 18/28 OR_JacksonCounty_0004_00

Zeller (4) 10/24/12



Photo 5 of 14: Antelope Creek Covered Bridge
Jackson Co., OR

2531000 19/28 OR_JacksonCounty_0005_00

Zeller (5) 10/24/12



Photo 6 of 14: Antelope Creek Covered Bridge
Jackson Co., OR

2531000 20/28 OR_JacksonCounty_0006_00

Zeller (6) 10/24/12



Photo 7 of 14: Antelope
Creek Covered Bridge
Jackson Co., OR

Zeller 17) 10/24/12

2531000 21/28 OR..JacksonCounty-0007-00



Photo 8 of 14. Antelope Creek Covered
Bridge, Jackson Co., OR

2531000 22/28 OR_JacksonCounty_0008_00

Zeller (8) 10/24/12



Photo 9 of 14: Antelope Creek
Covered Bridge, Jackson
Co., OR

Zeller (9) 10/24/12

2531000 23/28 OR JacksonCounty_0009_00

FUJIFILM

Fuji

Crystal Archive

FILM



Photo 10 of 14: Antelope Creek Covered Bridge
Jackson Co, OR

2531000 24/28 OR_JacksonCounty_0010_01

Zeller <10> 10/24/12



Photo 11 of 14: Antelope Creek Covered Bridge
Jackson Co., OR

2531000 25/28 OR_JacksonCounty_0011_01

Zeller <11> 10/24/12



Photo 12 of 14: Antelope Creek Covered
Bridge, Jackson Co., OR

2531000 26/28 OR_JacksonCounty_0012_01

Zeller (12) 10/24/12



Photo 13 of 14: Antelope
Creek Covered Bridge,
Jackson Co., OR

Zeller <13> 10/24/12

2531000 27/28 DR JacksonCounty 0013001

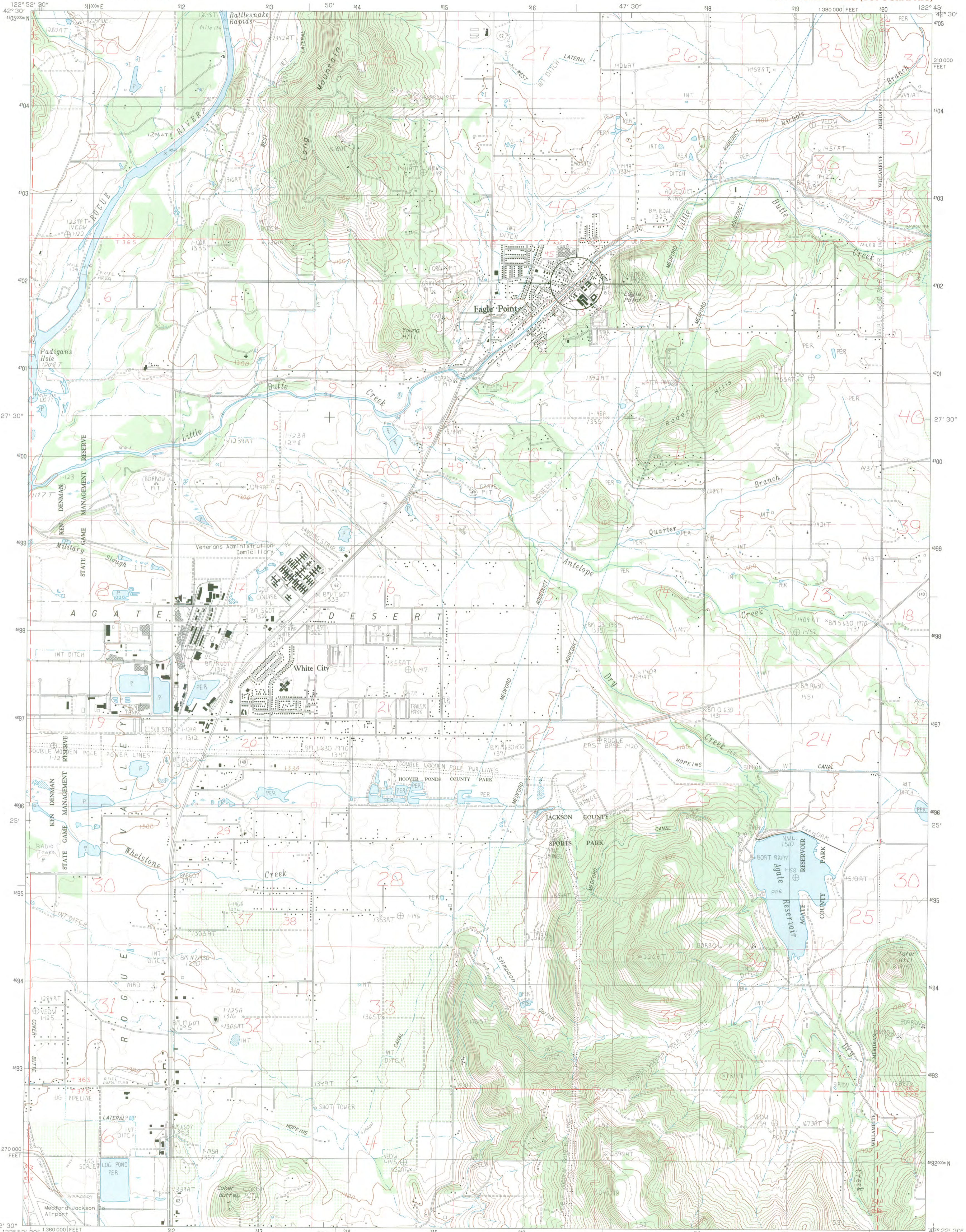


Mount St. Helens
OUT
ARCHAEOLOGICAL MOUND
VICTIMS OF A MOUNTAIN
ERUPTED IN 1980
NATIONAL SYSTEM OF PUBLIC LANDS

Photo 14 of 14: Antelope Creek Covered
Bridge, Jackson Co, OR

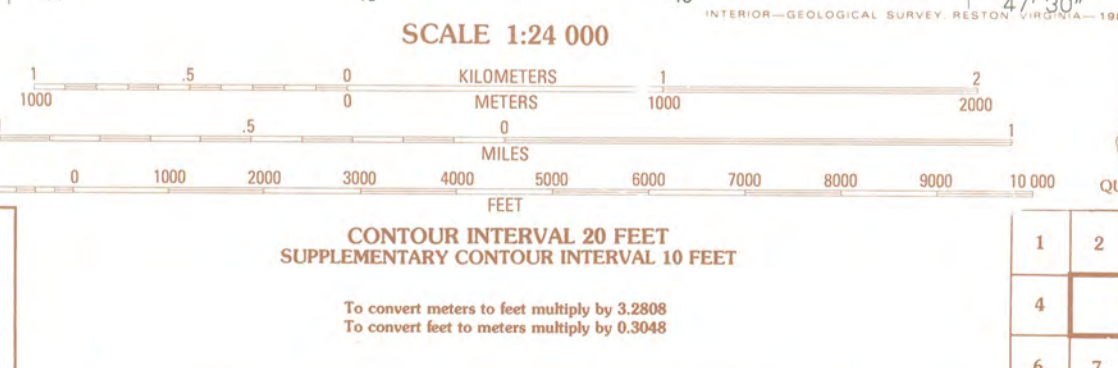
2531000 28/28 OR_JacksonCounty_0014_01

Zeller <14> 10/24/12



PRODUCED BY THE UNITED STATES GEOLOGICAL SURVEY
CONTROL BY USGS, NOS/NOAA
COMPILED FROM AERIAL PHOTOGRAPHS TAKEN 1976
FIELD CHECKED 1977 MAP EDITED 1983
PROJECTION LAMBERT CONFORMAL CONIC
GRID: 1000-METER UNIVERSAL TRANSVERSE MERCATOR ZONE 10
10,000-FOOT STATE GRID TICKS OREGON, SOUTH ZONE
VERTICAL DATUM, NATIONAL GEODETIC VERTICAL DATUM OF 1929
HORIZONTAL DATUM, 1927 NORTH AMERICAN DATUM
To place on the predicted North American Datum of 1983,
move the projection lines as shown by dashed corner ticks
(20 meters north / 95 meters east)
There may be private inholdings within the boundaries of any
Federal and State Reservations shown on this map

PROVISIONAL MAP
Produced from original
manuscript drawings. Infor-
mation shown as of date of
field check.



LITTLE BUTTE CREEK FOOT BRIDGE
ROAD LEGEND
Improved Road Eagle Point, Jackson Co., OR
Unimproved Road LTR references zone 10
E516510 H470210
Latching coordinates: lat 42.47025
long -122.79916
(ANTELOPE CREEK COVERED
EAGLE POINT, OREG. BRIDGE)
PROVISIONAL EDITION 1983

August 29, 2012

State Historic Preservation Office

RE: Re-listing of Antelope Creek Covered Bridge on the National Historic Register.

Dear Committee Members,

Being a life long resident of Eagle Point, both my parents and children have lived in the area dating back to the early 1900's. My family has been involved in the Grange and Schools for many years and I to have followed in there footsteps, I am currently the Master of the Grange and along with many fellow members are interested in instating the Antelope Creek Covered Bridge as a Historical Covered Bridge.

This Bridge along with 3 others, are the only remaining Covered Bridges in Jackson County. In 1987 the community gathered the funds to move and restore this bridge to it natural state in order to preserve it for the future. It is now located within the historical district of Eagle Point and is serving the community as safe passage for crossing the Little Butte Creek by both children and residents.

As you access the Bridge you pass the Eagle Point Markers honoring our Veterans both past and present, we also have the avencu of flags which are placed at the both ends of the bridge honoring past veterans on Federal Holidays. Each of these flags is a dedicated flags given by the military to living family members and then a family member donates the flag to the community to be placed on avencu of flags honoring them. I have personally overseen this project for several years now.

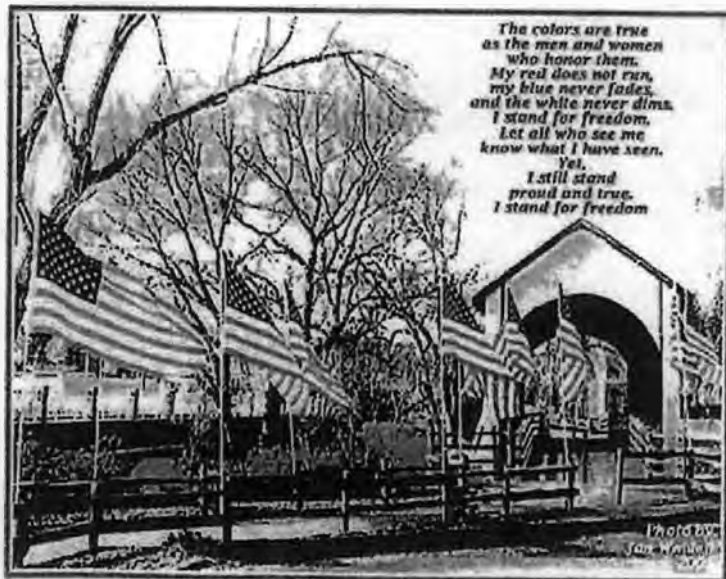
As a volunteeer of the Eagle Point Museum I experience people's curiosity and interest in the Bridge and Veterans Memorial Plaques. If the Bridge were to be instated within the historical registry I believe the flow visitors would increase.

In closing I believe the community feels this bridge has been given a second chance and will be cared for by all in many years to come.

Respectfully,

Halen Harnish Wolgamott

Halen Wolgamott





CITY OF EAGLE POINT

"Gateway to the Lakes"

OREGON

August 31, 2012

State Advisory Committee on Historic Preservation
625 Center Street
Oregon City, OR 97045

Subject: Re-listing of Antelope Creek Covered Bridge on the National Register of Historic Places

Committee Members,

As Mayor of Eagle Point and owner of the 1872 Butte Creek Mill (*Snowy Butte Flour Mill*, added to the National Register in 1976, listing #76001581) which anchors the far end of our historic district, I am writing to express my support for placing the Antelope Creek Covered Bridge back on the National Register of Historic Places.

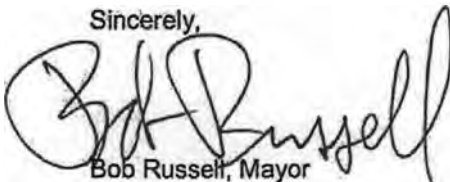
The bridge prominently spans Little Butte Creek in Eagle Point's Town Center and is approached through the adjoining Veteran's Memorial Park. It serves as a pedestrian bridge primarily intended for children to reach the elementary school on the opposite side of the creek from town. It is also heavily used and enjoyed by the community at large, and is frequently visited by tourists and history enthusiasts.

Built in 1922, the bridge is significant for its engineering design and is included in the 1979 *Oregon Covered Bridges* thematic nomination. Of notable mention is the housed, queen post timber truss style, which is rare in the state of Oregon. Also interesting are the bridge builders, Jackson County bridge-building brothers Wesley and Lyal Hartman who, along with their father Jason, built hundreds of bridges in Jackson County in the late nineteenth and early twentieth centuries, including the covered bridges. Today this bridge is one of only 44 remaining covered timber truss bridges from the estimated 450 that once existed in Oregon.

After the bridge relocation to Little Butte Creek in 1987, window openings cut out of the sides prompted its removal from the list. However, since then the City has expended considerable effort and resources to bring the bridge back to its original state. The bridge was re-sided in 2000 with custom milled planks that replicate its earlier siding. Further, retention of its timber structure and metal rod connections emphasize the bridge's original structural design, materials and workmanship. And its overall form, arched portal and clerestory openings, knee braces and outriggers, and exposed purlins and rafters are notable design features.

To conclude this letter, the Antelope Creek Covered Bridge is important to our community and, as one of only four such bridges in Jackson County, it is an important historical resource. I hope the information in this letter is helpful, and if you have any other questions please don't hesitate to contact me at (503) 880-2147, or by email at russell1950@aol.com.

Sincerely,

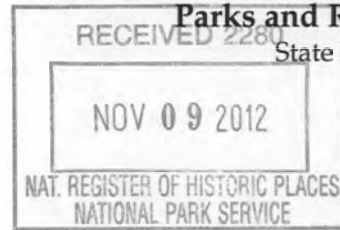


Bob Russell, Mayor



Oregon

John A. Kitzhaber, MD, Governor



Parks and Recreation Department

State Historic Preservation Office

725 Summer St NE, Ste C

Salem, OR 97301-1266

(503) 986-0671

Fax (503) 986-0793

www.oregonheritage.org



October 24, 2012

Ms. Carol Shull
National Register of Historic Places
USDOI National Park Service - Cultural Resources
1201 "Eye" Street NW, 8th Floor
Washington, D.C. 20005

Re: National Register Nomination

Dear Ms. Shull:

At the recommendation of the Oregon State Advisory Committee on Historic Preservation, I hereby nominate the following historic property to the National Register of Historic Places:

ANTELOPE CREEK COVERED BRIDGE
MAIN ST
EAGLE POINT, JACKSON COUNTY

We appreciate your consideration of this nomination. If questions arise, please contact Diana Painter, Architectural Historian, at (503) 986-0668.

Sincerely,

Roger Roper
Deputy State Historic Preservation Officer

Encl.





Beall, Edson <edson_beall@nps.gov>

Re: Antelope Creek Covered Bridge

1 message

Diana Painter <diana.painter@state.or.us>

Tue, Dec 18, 2012 at 1:35 PM

To: Edson Beall <edson_beall@nps.gov>

Ok, thanks. I must have counted the days wrong! Have a good holiday!

Diana

>>> "Beall, Edson" <edson_beall@nps.gov> 12/18/2012 10:30 AM >>>

Hi Diana,

The nomination is still under review. We have to wait until the end of our public comment period to act on the nomination, which will be next week.

Thanks, Edson

On Tue, Dec 18, 2012 at 1:06 PM, Diana Painter <diana.painter@state.or.us> wrote:

Hi Edson, I thought that the above nomination in Jackson Co., Oregon, was going to be posted last week. Can you give me an update on this? It is a SHPO-prepared nomination.

(They keep asking about it).

Diana

Diana J. Painter, PhD

Architectural historian

National Register program

Oregon SHPO

725 Summer Street NE, Suite C

Salem, Oregon 97301

Ph: 503-986-0668

Fax: 503-986-0793

Visit our website:

www.oregonheritage.org

--

Thank you for your interest in the preservation programs of the National Park Service.

Sincerely,

Edson H. Beall, Historian

National Register of Historic Places

Washington, D.C.

Phone: 202-354-2255

Fax: 202-371-2229

E-mail: Edson_Beall@nps.gov

Web: <http://www.nps.gov/history/nr/>