



USS New Jersey
Camden Co.
NJ

Photo #1



USS New Jersey
Camden Co.

NJ

Photo #2



USS New Jersey

Camden Co.

NJ

Photo #3



USS New Jersey

Camden Co.

NJ

photo # 4



USS New Jersey
Camden Co.

NJ

Photo # 5



USS New Jersey
Camden Co.

NT

photo #6



USS New Jersey
Camden Co.
NJ

Photo #7



62

USS New Jersey
Camden Co.

NJ

Photo # 88



MARINA
TRAFFIC
ONLY

DO NOT
ENTER

NO BUS
PARKING
IN MARINA
AREA

USS New Jersey
Camden Co.

NJ

Photo #9

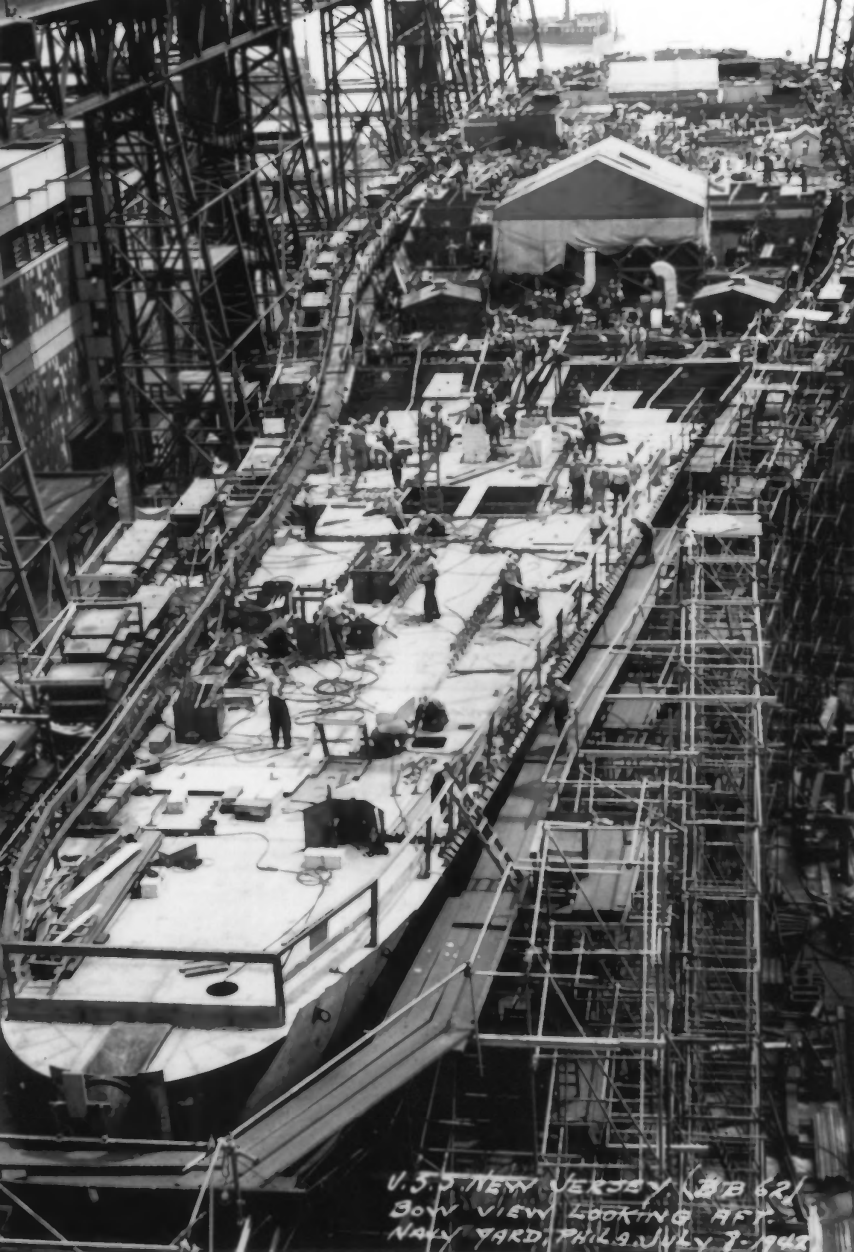
NEW JERSEY
WATERFRONT

- Battleship New Jersey
- Ⓚ Tweeter Center
- Ⓚ South Jersey P.A.C.



USS New Jersey
Camden Co.
New Jersey

Photo # 10



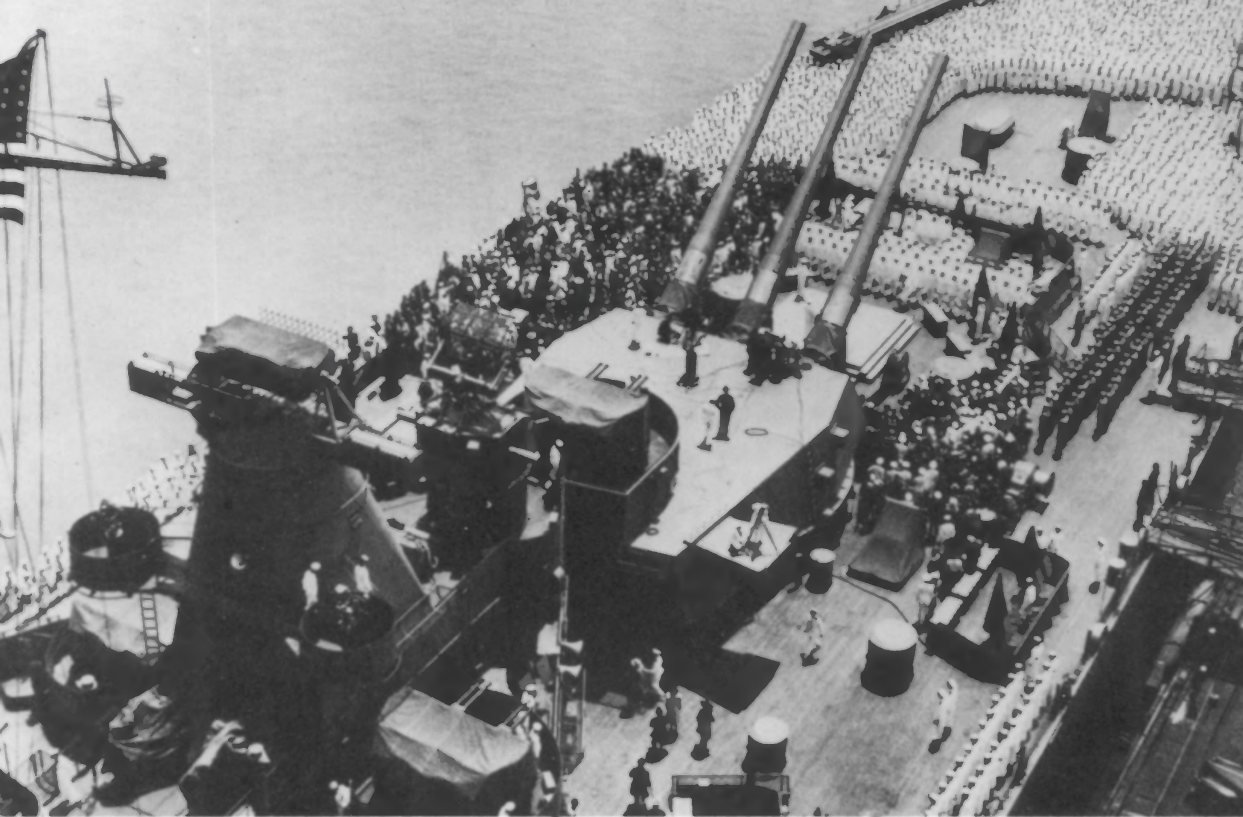
U.S.S. NEW JERSEY (BB 62)
BOW VIEW LOOKING AFT.
NAVY YARD, PHILA. JULY 7, 1948

New Jersey

USS New Jersey BB-62

#1 of 28

Bow view looking aft of Battleship New Jersey at Philadelphia Navy Yard, 8 July 1942. After nearly two years of construction, the maindeck has been completed in places. Sheds have been built over the turret barbettes.



New Jersey

USS New Jersey BB-62

#2 of 28

23 May 1943...Commissioning of Battleship New Jersey. Some 2,400 officers and enlisted men are on the fantail. To the right and below the American flag is the fire control tower for the main battery.



New Jersey

USS New Jersey BB-62

#3 of 28

Battleship New Jersey's three Vought OS2U Kingfisher seaplanes on the fantail on 3 September 1943. Protected by covers from the sea, these aircraft were disguised to scout for enemy ships, to observe and correct fire from the main battery and rescue downed aviators.



New Jersey

USS New Jersey BB-62

#4 of 28

Close up of an OS2U Kingfisher seaplane being recovered by Battleship New Jersey. The plane was hoisted aboard by the crane on the rear deck. These aircraft were used from time of commissioning until the spring of 1945.



New Jersey

USS New Jersey BB-62

#5 of 28

Part of the anti-aircraft gun crew of Battleship New Jersey, watching helplessly, as a Japanese kamikaze plane prepares to strike the aircraft carrier Intrepid (CV11) on 25 November 1944.



New Jersey

USS New Jersey BB-62

#6 of 28

26 August 1953...Hong Kong. Chinese boats at the foot of Battleship New Jersey's accommodation ladder during visiting day. Note the five inch/38 caliber dual purpose guns.



New Jersey

USS New Jersey BB-62

#7 of 28

Two UH-1 Huey helicopters resting on the fantail of Battleship
New Jersey during her service in December 1968 off Vietnam.

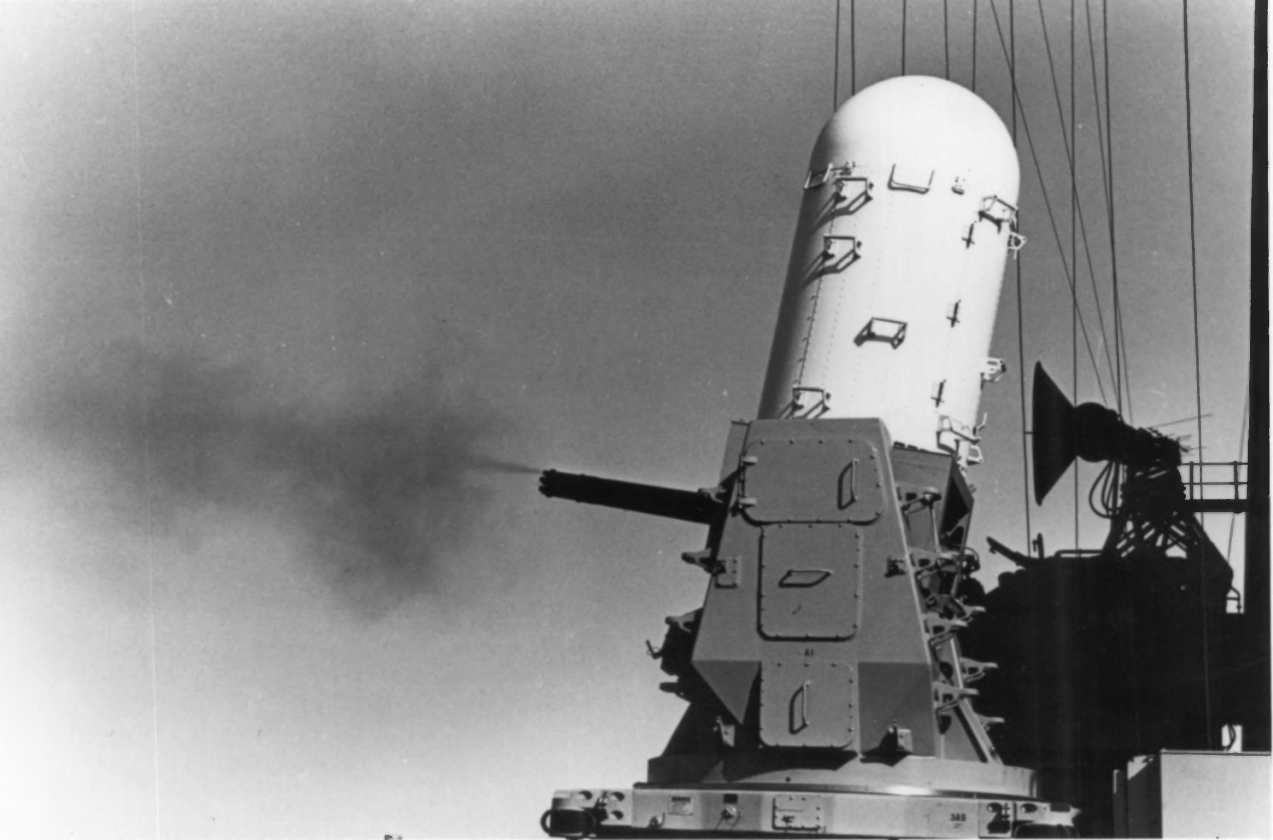


New Jersey

USS New Jersey BB-62

#8 of 28

Battleship New Jersey steams as part of the carrier Midway's battle group in the Western Pacific Ocean during July 1983.

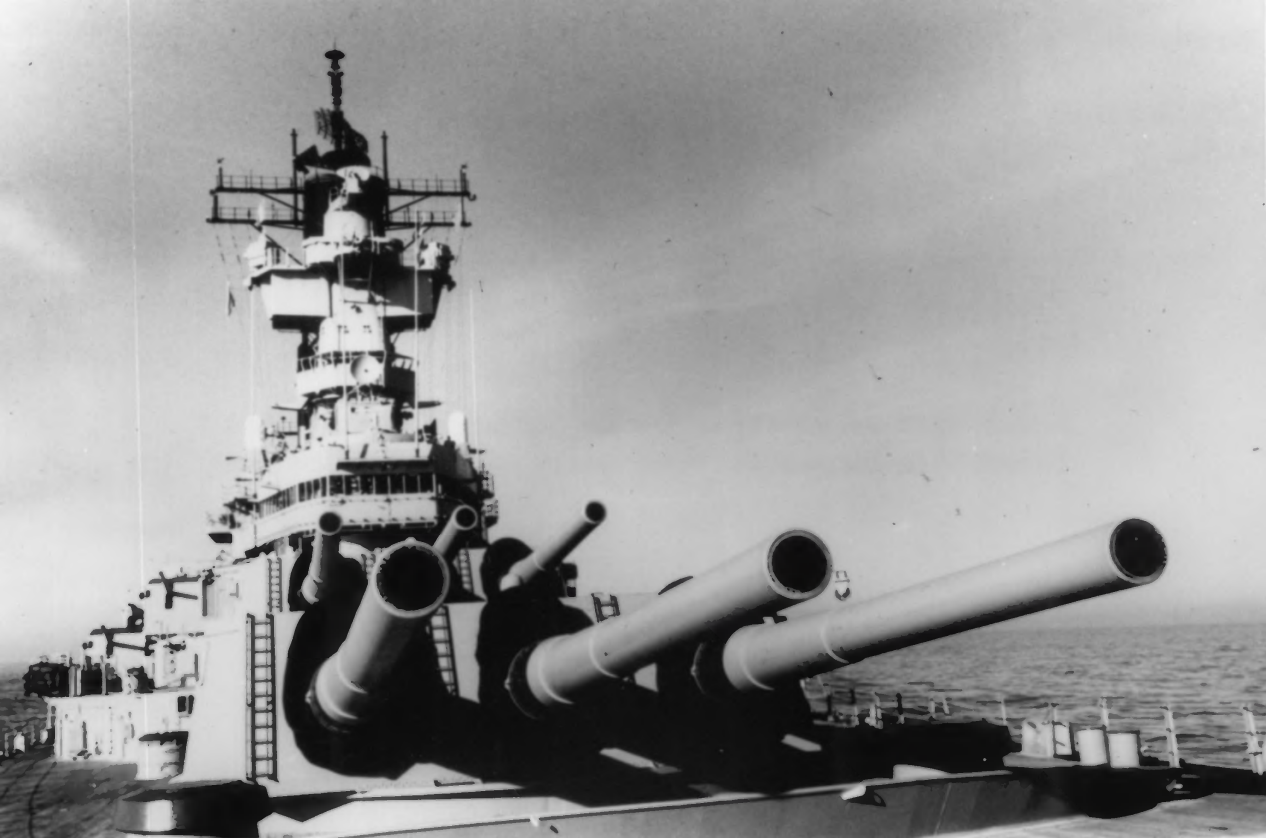


New Jersey

USS New Jersey BB-62

#9 of 28

Pacific Ocean...Close-up side view of the Vulcan/Phalanx, close-in weapon system being fired aboard battleship New Jersey during her sea trials.



New Jersey

USS New Jersey BB-62

#10 of 28

Pacific Ocean... A view of the Number one and Number two Mark 7, 16 inch/50 caliber guns and superstructure of Battleship New Jersey.

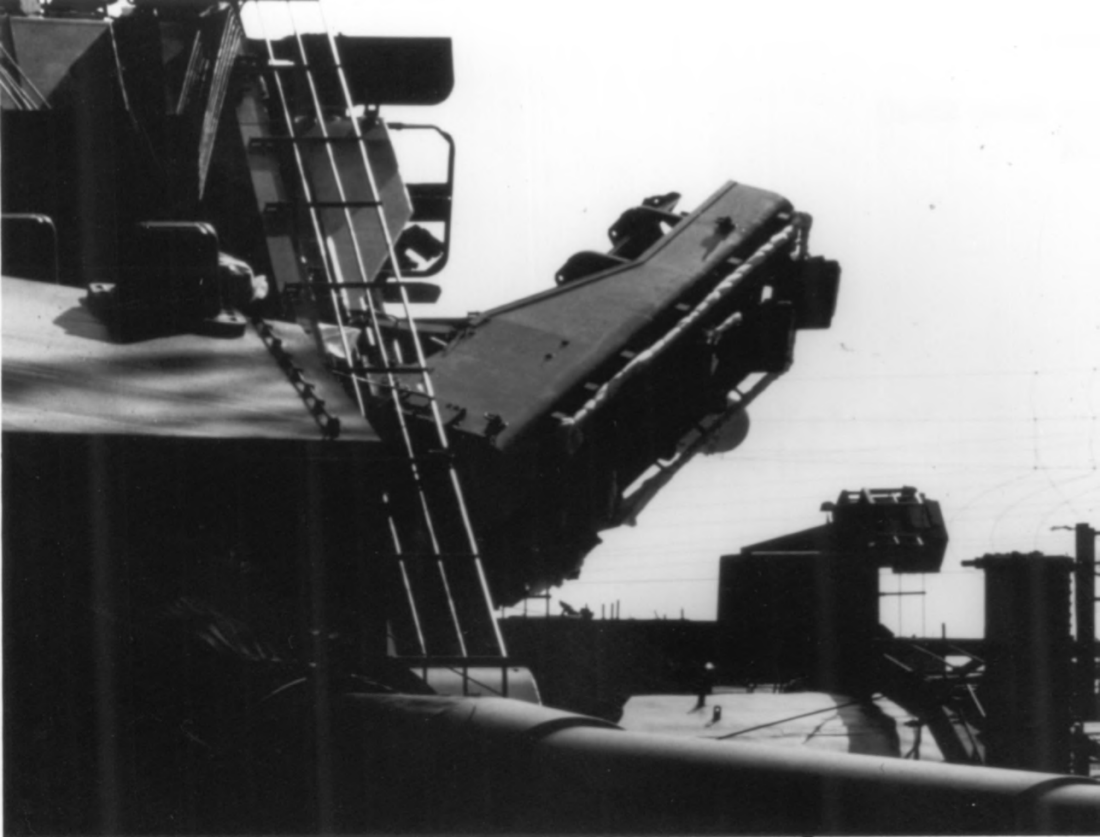


New Jersey

USS New Jersey BB-62

#11 of 28

South China Sea...Nine 16 inch projectiles are fired toward targets in the Republic of Vietnam by the main battery of Battleship New Jersey. This nine gun salvo marked the first time all guns of the main battery were fired in combat at the same time since the ship was recommissioned on 6 April 1968.



New Jersey

USS New Jersey BB-62

#12 of 28

View of a Tomahawk cruise missile armored box launcher mounted on the port side of Battleship New Jersey.

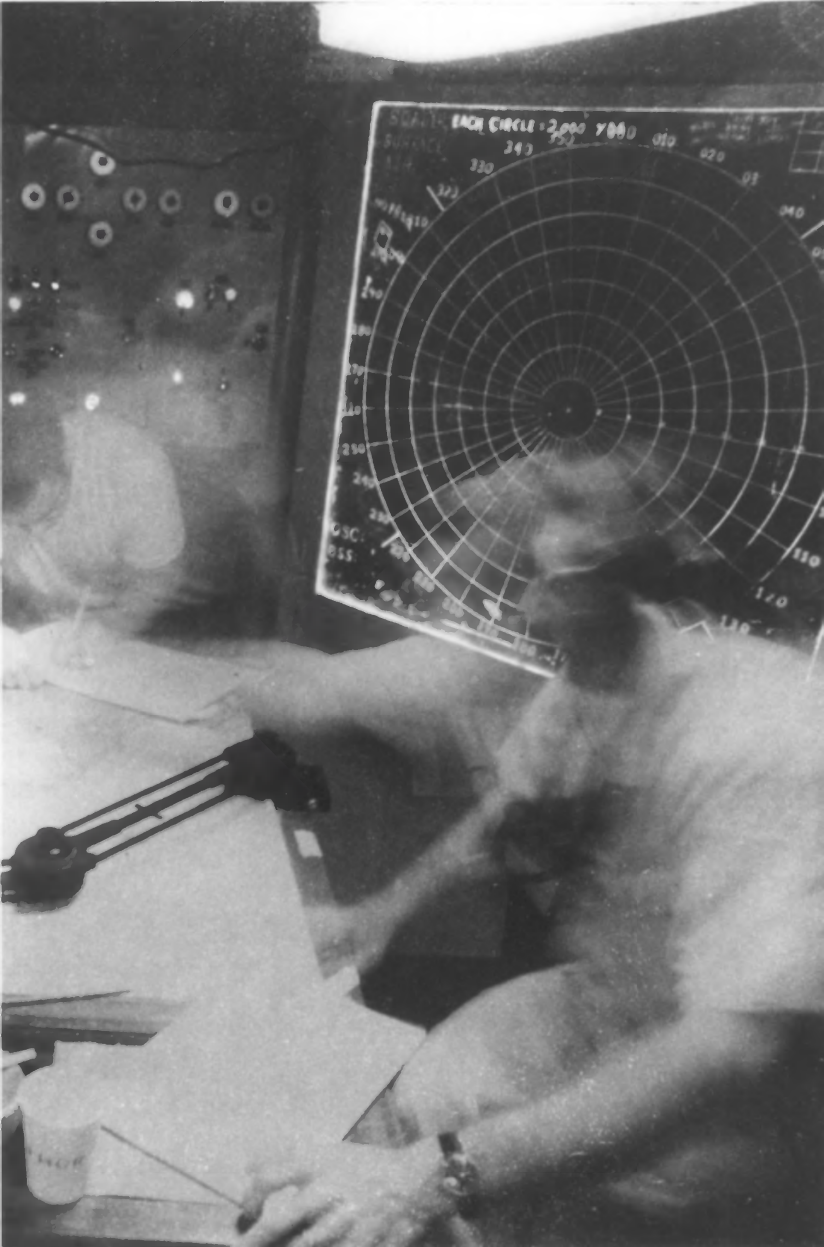


New Jersey

USS New Jersey BB-62

#13 of 28

Tomahawk missile launch off USS New Jersey. New Jersey was the first surface ship to successfully fire the Tomahawk, increasing its offensive capabilities.



New Jersey

USS New Jersey BB-62

#14 of 28

**Furious action in the Combat Engagement Center,
(CEC), aboard Battleship New Jersey. Note
surface plotting board behind the radarman.**



New Jersey

USS New Jersey BB-62

#15 of 28

Combat Engagement Center, (CEC). The control section for fighting the ship and coordinating the battle with the rest of the fleet units.

NO SMOKING

5

⊗

6

⊗



New Jersey

USS New Jersey BB-62

#16 of 28

**Delivery trays for the 16" powder bags,
turret two, Battleship New Jersey.**

5-157-0-N
FR 157-163
G-3 DIV
C-507-B



SAFETY ORDERS
READ TO LIVE BY

SAFETY ORDERS
READ TO LIVE BY

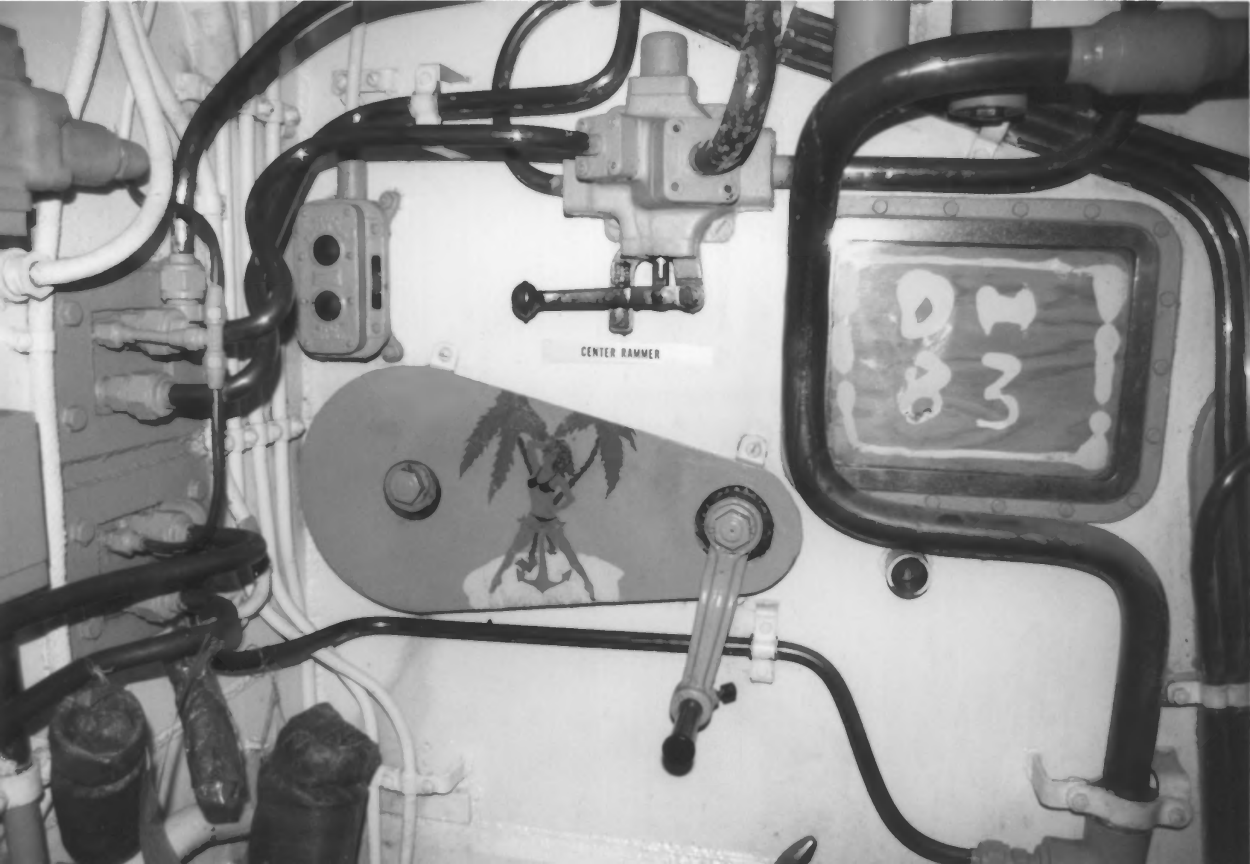


New Jersey

USS New Jersey BB-62

#17 of 28

Silk powder bags containing the explosive powder to propel the 16" projectile. Up to eight of these bags would be used at one firing.



CENTER RAMMER

01
3

New Jersey

USS New Jersey BB-62

#18 of 28

Control unit for the rammer, which moves the projectile into the breech of the barrel. Center barrel, Turret Two, Battleship New Jersey. Note the art work.



New Jersey

USS New Jersey BB-62

#19 of 28

**Breech and breech mechanism, Turret Three, Battleship New Jersey.
After closing, the breech block rotates to seal the breech.**

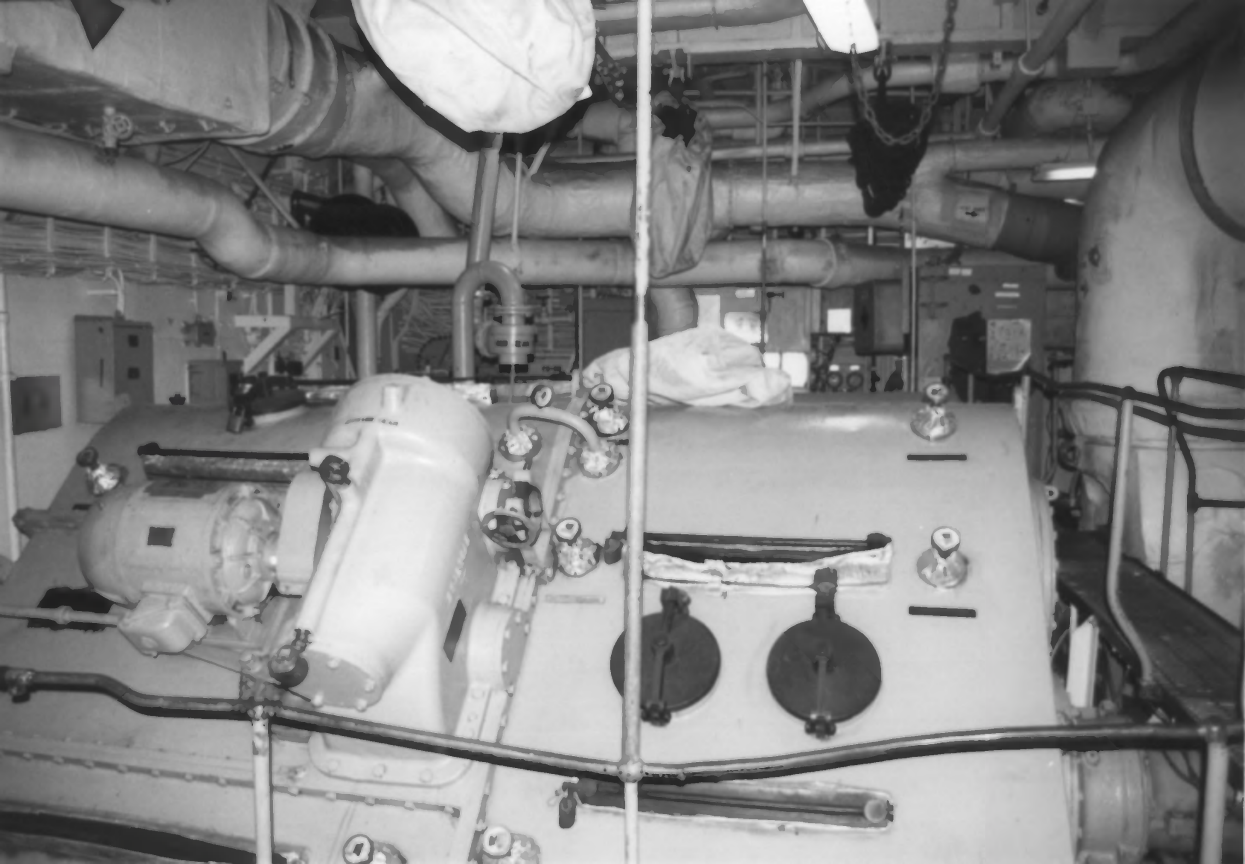


New Jersey

USS New Jersey BB-62

#20 of 28

Aerial photograph of full broadside of Battleship New Jersey. Using 1930's technology, the power of these guns still can not be replaced in the 1990's.

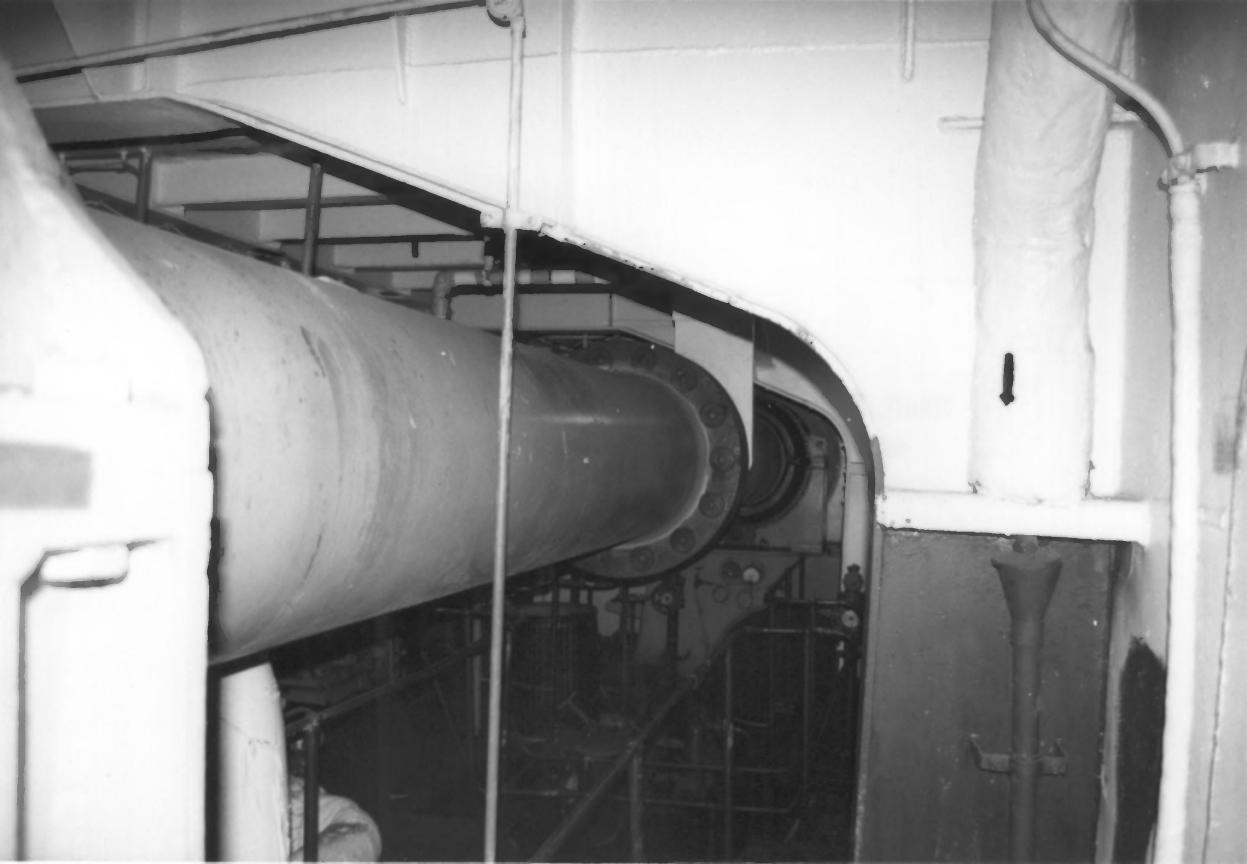


New Jersey

USS New Jersey BB-62

#21 of 28

Jacking Gear, Battleship New Jersey. Used to lock the shaft and/or slowly rotate the shaft and turbines. Used primarily to warm up the shafts and turbines.

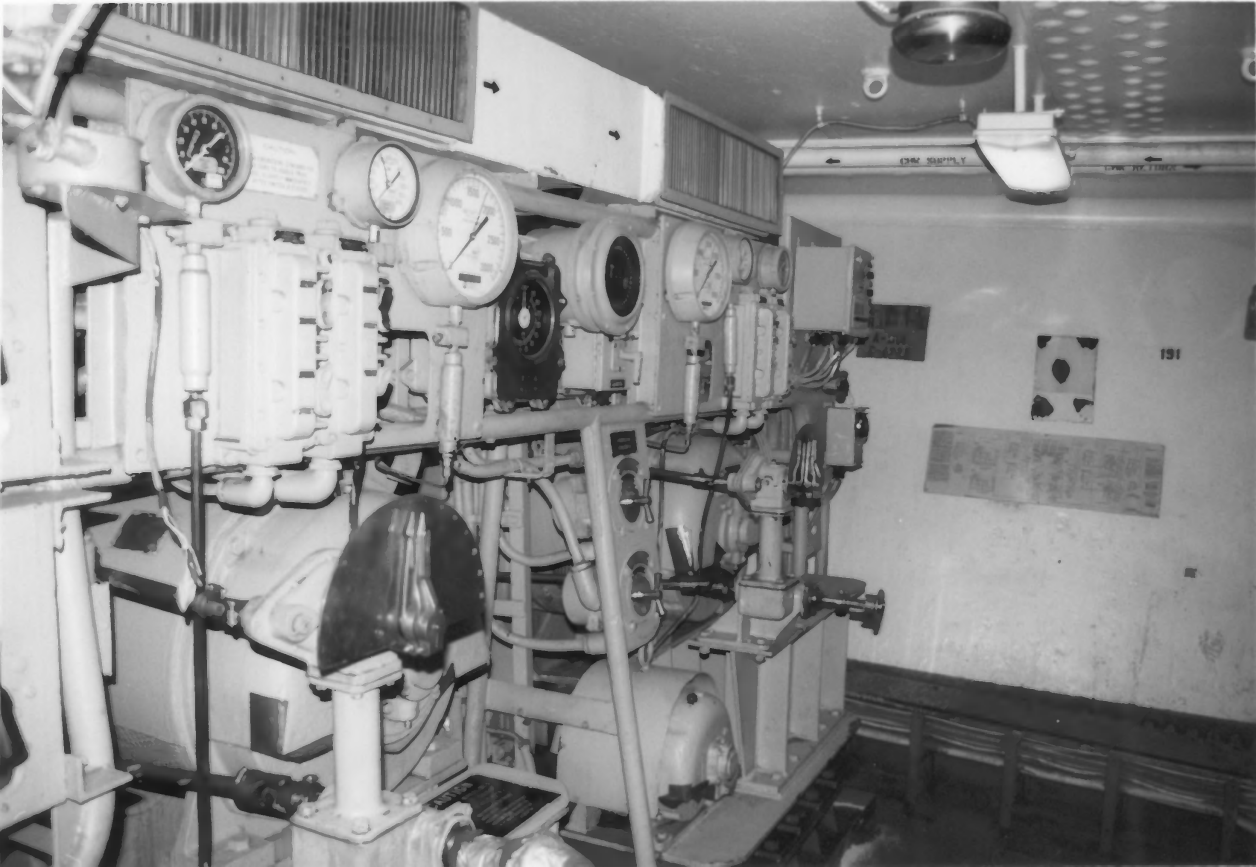


New Jersey

USS New Jersey BB-62

#22 of 28

Shaft, Battleship New Jersey. One of the four shafts used to transfer power from the turbines to the propellers. Each shaft provided 53,000 horsepower.



CRUISE SUPPLY

CRUISE SUPPLY

191

New Jersey

USS New Jersey BB-62

#23 of 28

Aft Steering, Battleship New Jersey. This is the emergency steering station in the event of casualty.



201

202

203

New Jersey

USS New Jersey BB-62

#24 of 28

Port Rudder Room, Battleship New Jersey. These rams are used to steer the ship. Note frame numbers on the bulkhead.



New Jersey

USS New Jersey BB-62

#25 of 28

Chief Petty Officer Mess, Battleship New Jersey. Senior enlisted mess, located in the after part of the ship.



New Jersey

USS New Jersey BB-62
#26 of 28

Ships Library, Battleship New Jersey.



New Jersey

USS New Jersey BB-62
#27 of 28

Ships Store, Battleship New Jersey



New Jersey

USS New Jersey BB-62

#28 of 28

Pearl Harbor, USS New Jersey. The most distinguished,
most decorated, and mightiest ship ever to sail the seas.