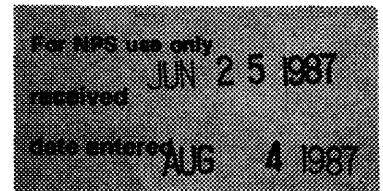


**United States Department of the Interior  
National Park Service**

**National Register of Historic Places  
Inventory—Nomination Form**



Continuation sheet

Item number 8

Page 6

1. Name: Strawberry Mine Historic District

2. Location

SE1/4, NW1/4; SW1/4, NE1/4, Sec. 14, T2S, R3W, Harrison,  
Montana, USGS Quadrangle.

3. Classification

district; private ownership; public acquisition n/a;  
unoccupied; accessible but restricted; industrial

4. Owner

Multiple

5. Location of Legal Description

Madison County Courthouse, Virginia City, Montana

6. Representation in Existing Surveys

Pony Historic Resources Survey; not determined eligible;  
1985; Montana Historic Preservation Office, Helena, Montana.

7. Description

condition deteriorated; altered; original site

Five buildings and structures make up the Strawberry Mine  
Historic District: A building, of post and beam construction  
with plank siding, housing a ten stamp battery and other  
machinery; two ore bins, one made of beams and planks, and  
the other of logs; an adit (mine entrance); and a one story  
building, possibly a dwelling, erected in two phases, one of  
log and the other of finished lumber.

Building List: Name, inventory # keyed to district map,  
location, date of construction, physical type, reference to  
photograph, status [ P=Primary Significance, C=contributing,  
NC=noncontributing].

Strawberry Mill; I12; 1900; stamp mill of post and beam construction  
covered with planks; photo #s 36 & 37; C

United States Department of the Interior  
National Park Service

**National Register of Historic Places  
Inventory—Nomination Form**

For NPS use only

received

date entered

Continuation sheet

Item number

8

Page

7

Dwelling near Strawberry; I13; prior to 1910; possible dwelling or office of log and lumber construction; photo # 38; Contributing.

Adit; I14; ca. 1950s; timbered adit; photo # 39; Noncontributing.

Ore Bin; I15; ca. 1950s; ore bin of beam and plank construction; photo # 40; Contributing.

Ore Bin; I16; prior to 1910; ore bin of log construction; photo # 41; Contributing.

8. Significance:            Specific dates: 1900-1910

The Strawberry Mill is of primary significance because it stands today as the finest representation of the technology of ore processing that occurred in the Pony mining district during the historic period (1876-1910) and because this mill complex is associated with W.W. Morris, who was Pony's most important mining entrepreneur. Around 1900, when the Strawberry Mill was erected, Pony had reached its apex of wealth and importance as a mining center. The Strawberry Mill is a reflection of this development. Later, W.W. Morris acquired the plant, overhauled it, and used it to process ores from the Strawberry and Boss Tweed mines, among others. The Strawberry also maintains the most integrity of any mill associated with mining in Pony. Although the mill structure itself is in deteriorated condition, with roof and wall planking scattered by the wind around the structure, the mill retains primary integrity of form, design, materials, and association. Built into a hillside, the mill structure reflects the gravity feed milling process that was used during the historic period. Of the numerous mills that were constructed in the Pony mining district during the historic period, most are evidenced today only by their stone foundation works, with the upper wood frame superstructures of each mill having either burned or been systematically dismantled for salvage. The Strawberry Mill, in fact, is one of a very limited number of gravity feed stamp mills in the State that remains essentially intact.

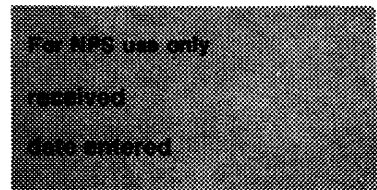
The buildings and structures around the mill help to depict its operation. Ore bins held ore before it was transported to the nearby mill; ore was taken out of the mine through the adit in cars on tracks (although most of the tracks are gone, the remaining rails and a cleared path indicate the relationship to the adit to the mill); a small building near the mill was probably either a dwelling or an office for the operation.

9. Major Bibliographical References (see section 9 of cover form)

10: Geographical Data        65.14 acres

**United States Department of the Interior  
National Park Service**

**National Register of Historic Places  
Inventory—Nomination Form**



Continuation sheet

Item number 8

Page 8

UTM References

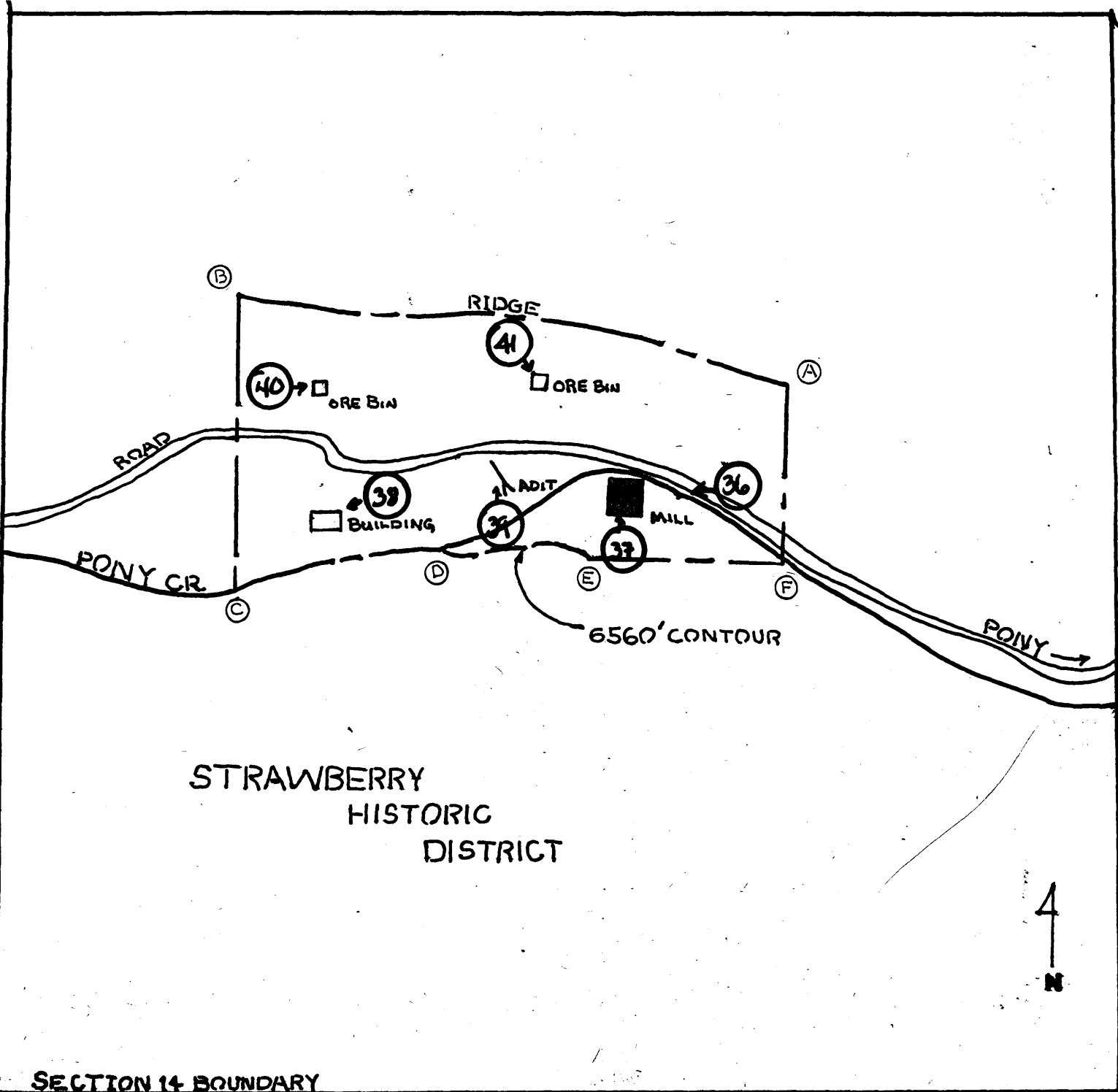
All Zone 12

- A: E--427450, N--5057000
- B: E--426750, N--5057150
- C: E--426750, N--5056700
- D: E--426950, N--5056750
- E: E--427150, N--5056750
- F: E--427450, N--5056750

Verbal boundary description and justification:

Beginning at a point between the 6680' and 6720' contours on Strawberry ridge (UTMs point A: Zone 12, E--427450, N--5057000), follow the ridge line due west 1/2 mile to a point on the ridge at the 7000' contour; then proceed south 1/4 mile to a point on the north bank of Pony Creek; then follow Pony Creek approximately 1000 feet due east to a point where the 6560' contour intersects the creek; then follow the 6560' contour due east approximately 650 feet to a point where the contour is 330 feet directly south of Pony Creek; then proceed east approximately 1000 feet to a point on the north bank of Pony Creek; then proceed north approximately 800 feet to point of beginning.

The boundary for the Strawberry Historic District is drawn so as to include the Strawberry Mill as well as several related buildings and structures which depict the operation of the mill and the relationship of the mine to the mill. In addition, the boundary encompasses the mining and milling landscape--disturbed ground and tailings piles--between the various elements of the district. This landscape is important because it is the setting for the mill and its associated buildings and structures.



JUN 25 1987