



NOV 7 1977

Fern Mountain Ranch

Arizona

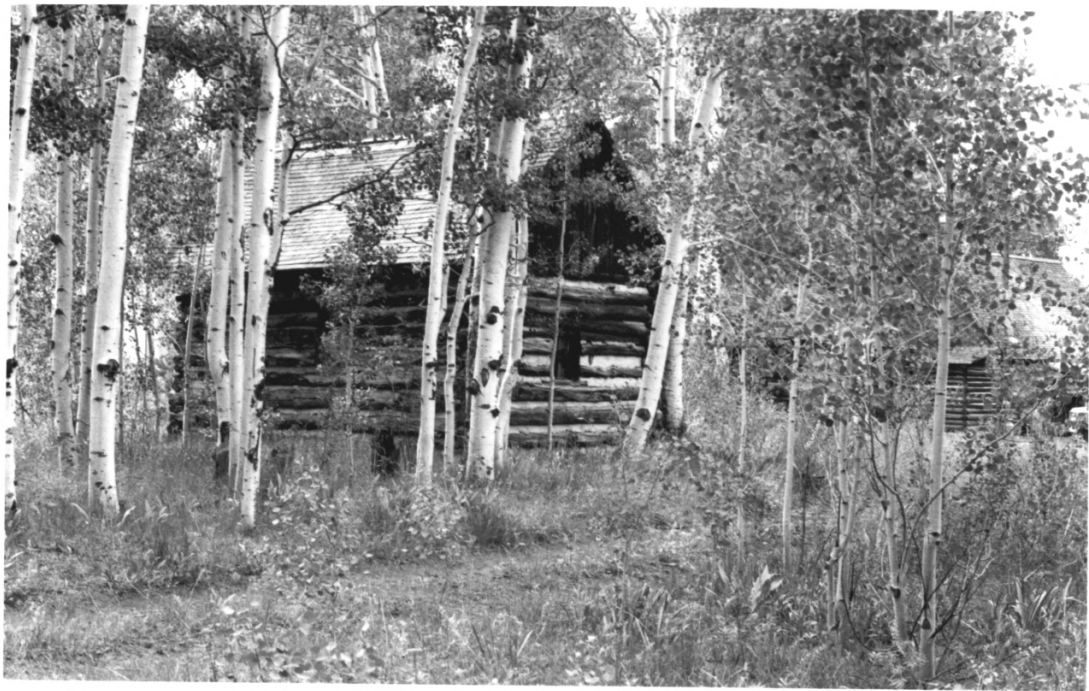
MAR 29 1978

Building 1 & 2, rear
looking Southeast

Date: 1977

Negative at Arizona State Parks Bd.

COCONINO County #1 of 20



Fern Mountain Ranch

Arizona

Building 5

looking Southeast

Date: 1977

Negative at Arizona State Parks Bd.

NOV 7 1977

#2 of 20

Coconino County

MAR 29 1978



~~Coccoloba~~

MAR 29 1978

Fern Mountain Ranch

Arizona

Building 2

Southwest corner detail

Date: 1977

Negative at Arizona State Parks Bd.

NOV 7 1977

#3 20



MAR 29 1978

NOV 7 1977

Fern Mountain Ranch

Arizona

Building 2

looking Northwest

Date: 1977

Negative at Arizona State Parks Bd.

Cocconino County

#4 20



Fern Mountain

NOV 7 1977

Arizona

Building 4

looking Southwest

MAR 29 1978

Date: 1977

Negative at Arizona State Parks Bd.

Cocconino

County

#5 g 20



Fern Mountain Ranch

Arizona

Building 1

Southeast corner detail

Date: 1977

Negative at Arizona State Parks Bd.

Cocconino County #6 820

NOV 7 1977



Fern Mountain Ranch
Arizona

NOV 7 1977

Building B
looking Northwest

Date: 1977

Negative at Arizona State Parks Bd.

Coconino County

#7 8 20



Fern Mountain Ranch
Arizona

Building 3

looking West

Date: 1977

Negative at Arizona State Parks Bd.

MAR 29 1978

NOV 7 1977

#8820

Coconino County



Fern Mountain Ranch

Arizona

MAR 29 1978

Building 3

looking North

Date: 1977

Negative at Arizona State Parks Bd.

Coconino County

NOV 7 1977

#9 g 20



MAR 29 1978

Fern Mountain Ranch

Arizona

Building 3 and rail fence

looking North

Date: 1977

Negative at Arizona State Parks Bd

Cocconino County

NOV 7 1977

#10 of 20



NOV 7 1977

Fern Mountain Ranch

barn yard (X-3)

looking SW

Date: ca 1972

Negative at Arizona State Parks
Board

MAR 29 1978 #11 820

Coconino County



NOV 7 1977

Fern Mountain Ranch

looking NW

Homestead (X-2) and dining room
(X-1)

Date: 1934

Negative at Arizona State Parks
Board

Coconino

County

#12

20

MAR 29 1978



Fern Mountain Ranch

Homestead

looking NW

NOV 7 1977

Date: Ca 1970

Negative at Arizona State Parks

Board

Cocconino County

#13 of 20



NOV 7 1977

Fern Mountain Ranch

looking NE

showing X-4, rear of dining room,
(X-1), and part of homestead (X-2)

Date: Ca 1933

Negative at Arizona State Parks

Board **Coconino County**

MAR 29 1978

#4 820



NOV 7 1977

Fern Mountain Ranch

looking E toward Mt. Humphreys

Date: Ca 1933

Negative at Arizona State Parks
Board

Cocconino County

#15 of 20

MAR 29 1978



Fern Mountain Ranch

NOV 7 1977

Homestead (X-2)

looking NNW

Date: Ca. 1933

Negative at Arizona State Parks
Board

Cocconino County

MAR 29 1978

#6 820



NOV 7 1977

Fern Mountain Ranch

Rear of homestead (X-2)

looking NNE

Date: Ca 1933

Negative at Arizona State Parks
Board

Coconino County MAR 29 1978 #178 20



Fern Mountain Ranch

NOV 7 1977

building X-5

looking E

Date: Ca 1933

Negative at Arizona State Parks
Board

Coconino County #18 of 20

MAR 29 1978



Fern Mountain Ranch

looking NNE

NOV 7 1977

Date: Ca 1933

Negative at Arizona State Parks

Board

Coconino County #19 & 20

MAR 29 1978



Fern Mountain Ranch

barn (X-5)

NOV 7 1977

looking WNW

Date: Ca 1933

Negative at Arizona State Parks

Board

Cocino County
MAR 29 1978

#20 of 20