

81-A-270

Brattleboro Downtown Historic District  
Brattleboro, Vermont  
Streetscape from Union Station (#1) to south  
end of Main Street  
Credit: Hugh H. Henry  
Date: November 1981  
Negative filed at Vermont Division for  
Historic Preservation  
View looking northwest  
Photograph #1



81-A-270

Brattleboro Downtown Historic District  
Brattleboro, Vermont  
Main Street-scape from south end  
Credit: Hugh H. Henry  
Date: November 1981  
Negative filed at Vermont Division for  
Historic Preservation  
Photograph #2

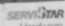


81-A-220

Brattleboro Downtown Historic District  
Brattleboro, Vermont  
Main Street-scape from Elliot Street  
Credit: Hugh H. Henry  
Date: November 1981  
Negative filed at Vermont Division for  
Historic Preservation  
View looking north  
Photograph #3



DUNKIN'  
DONUTS

BROWN ROBERTS  Hardware

Classy Cakes  
LUMINOUS

HOUSEHOLD  
SOUP & SOUP

P  
PARKING

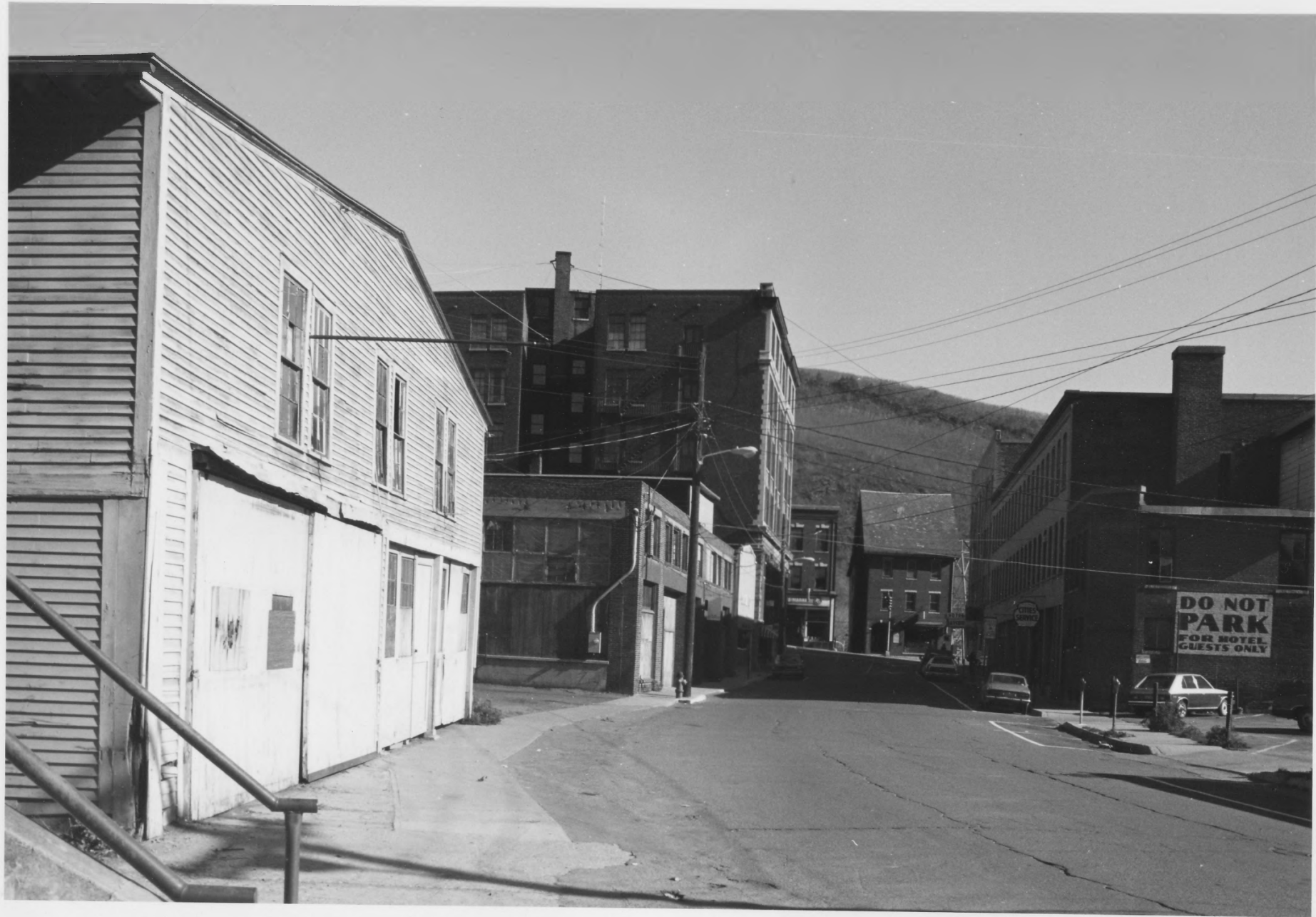
80

WATER STREET CAFE  
SANDWICHES & MORE

81-A-270

Brattleboro Downtown Historic District  
Brattleboro, Vermont  
Main Street-scape from High Street  
Credit: Hugh H. Henry  
Date: November 1981  
Negative filed at Vermont Division for  
Historic Preservation  
View looking north  
Photograph #4





**DO NOT  
PARK  
FOR HOTEL  
GUESTS ONLY**

81-A-271

Brattleboro Downtown Historic District  
Brattleboro, Vermont  
Flat Street-scape from Building #58 toward  
Main Street

Credit: Hugh H. Henry

Date: November 1981

Negative filed at Vermont Division for  
Historic Preservation

View looking east

Photograph #5



81-A-269

Brattleboro Downtown Historic District  
Brattleboro, Vermont  
Boston & Maine R.R. stone arch bridge (#2)  
Credit: Hugh H. Henry  
Date: November 1981  
Negative filed at Vermont Division for  
Historic Preservation  
View looking northeast  
Photograph #6



81-A-270

Brattleboro Downtown Historic District  
Brattleboro, Vermont  
Buildings #3, 6A, 7A (front); #5, 6, 7 (rear)  
Credit: Hugh H. Henry  
Date: November 1981  
Negative filed at Vermont Division for  
Historic Preservation  
South, east elevations; view looking northwest  
Photograph #7



ART

William  
Barber Shop

81-A-269

Brattleboro Downtown Historic District  
Brattleboro, Vermont  
Van Doorn or Culver Block (#5)  
Credit: Hugh H. Henry  
Date: November 1981  
Negative filed at Vermont Division for  
Historic Preservation  
West, south elevations; view looking northeast  
Photograph #8





Chesterfield  
FABRICS & INTERIORS

One hour  
MARTINIZING

One HOUR  
"MARTINIZING"  
THE MOST IN DRY CLEANING

SIEGEL STUDIO



FOOD MARKET



Coca-Cola



81A-269

Brattleboro Downtown Historic District  
Brattleboro, Vermont  
Ullery Block (#6)  
Credit: Hugh H. Henry  
Date: November 1981  
Negative filed at Vermont Division for  
Historic Preservation  
West elevation; view looking northeast  
Photograph #9



RICHARDSON BUILDING

Putnam  
Insurance Agency

VERMONT DIAMOND APPLIANCE  
CO. INC. A.I. TELEVISION

Brattleboro DAILY REFORMER

THE COSMETOLOGY SHOP

FOR RENT

AMERICAN STOWELL ELECTRIC CO.

Chesterfield  
FABRICS & INTERIORS

ONE HOUR  
MARTINIZING

MARTINIZING

AMERICAN BUILDING  
CO. 1890-1900

81-A-271

Brattleboro Downtown Historic District  
Brattleboro, Vermont  
American Building (#7)  
Credit: Hugh H. Henry  
Date: November 1981  
Negative filed at Vermont Division for  
Historic Preservation  
West elevation; view looking southeast  
Photograph #10

#10



81-A-269

Brattleboro Downtown Historic District  
Brattleboro, Vermont  
Cutler, Exchange, Devens, Richardson Blocks  
(#11, 10, 9, 8)

Credit: Hugh H. Henry

Date: November 1981

Negative filed at Vermont Division for Historic  
Preservation

West elevations; view looking northeast

Photograph #11



81-A-269

Brattleboro Downtown Historic District  
Brattleboro, Vermont  
Granite, Union Blocks (#13, 12)  
Credit: Hugh H. Henry  
Date: November 1981  
Negative filed at Vermont Division for  
Historic Preservation  
West elevations; view looking northeast  
Photograph #12





ROOT'S

LARRY BOLLING'S  
MUSIC

WARD NATION JEWELERS

MD MD MD MD MD MD

THE DRESS

81A-269

Brattleboro Downtown Historic District  
Brattleboro, Vermont  
Ryther, Ranger, Perry Blocks (#16, 15, 14)  
Credit: Hugh H. Henry  
Date: November 1981  
Negative filed at Vermont Division for  
Historic Preservation  
West elevations; view looking northeast  
Photograph #13



Fabric Center

ROOT'S



CAPT'N BULL  
MUSIC

KONN  
REALTOR

81-A-269

Brattleboro Downtown Historic District  
Brattleboro, Vermont  
Building #18, Hooker-Dunham Block (#17)  
Credit: Hugh H. Henry  
Date: November 1981  
Negative filed at Vermont Division for  
Historic Preservation  
West elevations; view looking northeast  
Photograph #14



NO PARKING  
12:00 AM  
TO 7:00 AM

Fal

DRINK  
STUDIO

7769  
WRT  
TUES

81-A-271

Brattleboro Downtown Historic District  
Brattleboro, Vermont  
Main Street Clock (#17B)  
Credit: Hugh H. Henry  
Date: November 1981  
Negative filed at Vermont Division for  
Historic Preservation  
South face; view looking north  
Photograph #15

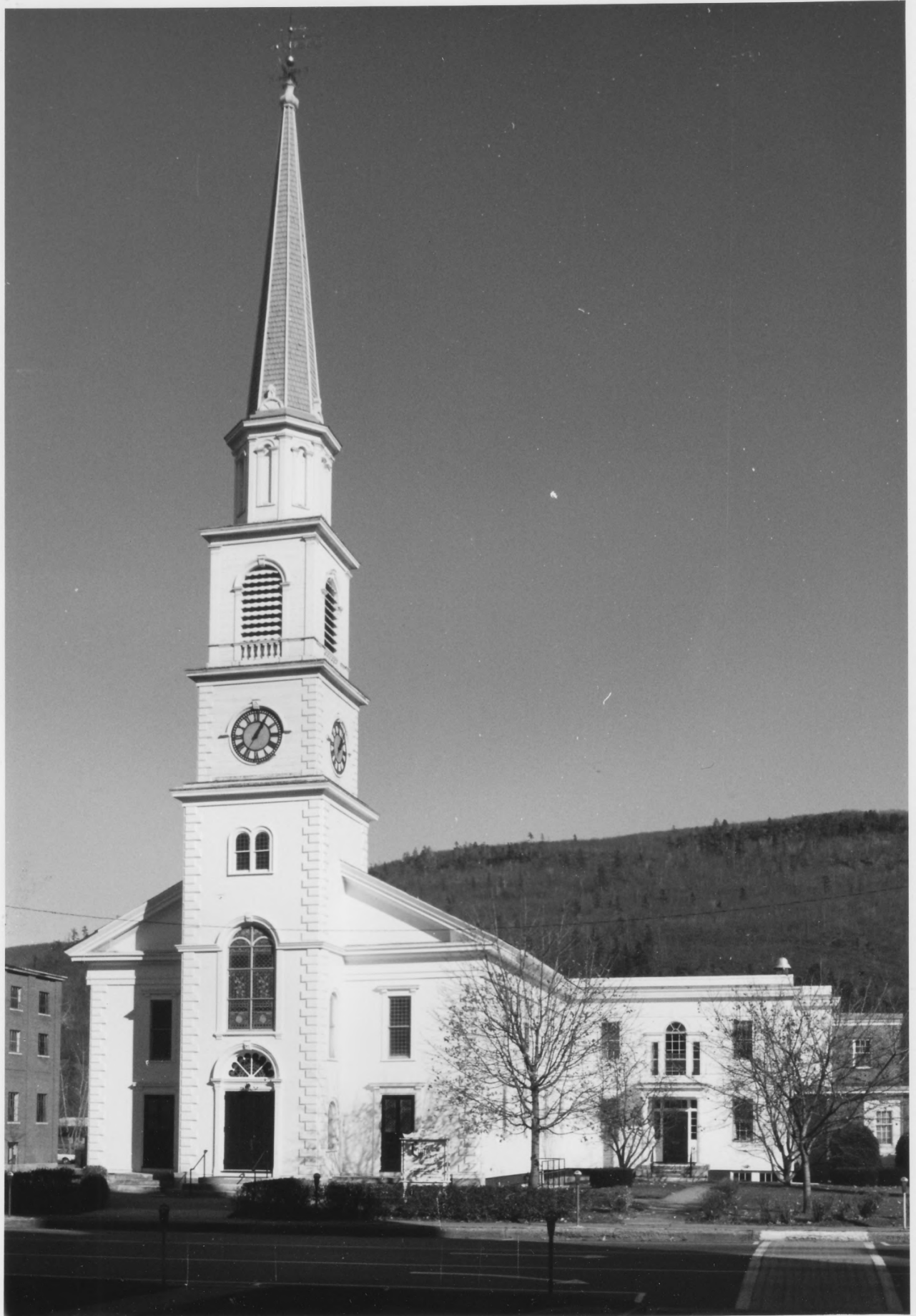


81-A-271

Brattleboro Downtown Historic District  
Brattleboro, Vermont  
Buildings #21, 20, 19  
Credit: Hugh H. Henry  
Date: November 1981  
Negative filed at Vermont Division for  
Historic Preservation  
West elevations; view looking northeast  
Photograph #16

# 16





81-A-271

Brattleboro Downtown Historic District  
Brattleboro, Vermont  
Centre Congregational Church (#23)  
Credit: Hugh H. Henry  
Date: November 1981  
Negative filed at Vermont Division for  
Historic Preservation  
West, south elevations; view looking northeast  
Photograph #17



81-A-269

Brattleboro Downtown Historic District  
Brattleboro, Vermont  
ex-Brattleboro Memorial Armory (#25)  
Credit: Hugh H. Henry  
Date: November 1981  
Negative filed at Vermont Division for  
Historic Preservation

West, south elevations; view looking northeast  
Photograph #18



NEWFANE 12  
TOWNSHEND 17  
MANCHESTER VT. 46

NORTH  
30



BELLE N.H.  
BELLOWS FALLS  
WHITE RIVER  
EAST  
9

EXXON

CATHOLIC CHURCH  
WELCOME TO ST. MICHAELS



81-A-269

Brattleboro Downtown Historic District  
Brattleboro, Vermont  
Wells Fountain (#26)

Credit: Hugh H. Henry

Date: November 1981

Negative filed at Vermont Division for  
Historic Preservation

South elevation; view looking north  
Photograph #19



81-7-269

Brattleboro Downtown Historic District  
Brattleboro, Vermont  
ex-Brattleboro High School (#27)  
Credit: Hugh H. Henry  
Date: November 1981  
Negative filed at Vermont Division for  
Historic Preservation  
East, north elevations; view looking southwest  
Photograph #20





81-A-270

Brattleboro Downtown Historic District  
Brattleboro, Vermont  
ex-Brattleboro High School (#27)  
Credit: Hugh H. Henry  
Date: November 1981  
Negative filed at Vermont Division for  
Historic Preservation  
West elevation; view looking northeast  
Photograph #21



81-A-269

Brattleboro Downtown Historic District  
Brattleboro, Vermont  
Brooks Memorial Library (#28)  
Credit: Hugh H. Henry  
Date: November 1981  
Negative filed at Vermont Division for  
Historic Preservation  
South, east elevations; view looking west  
Photograph #22



81-A-269

Brattleboro Downtown Historic District  
Brattleboro, Vermont  
Burnham House (#29)  
Credit: Hugh H. Henry  
Date: November 1981  
Negative filed at Vermont Division for  
Historic Preservation  
South, east elevations; view looking west  
Photograph #23



81-A-269

Brattleboro Downtown Historic District  
Brattleboro, Vermont  
ex-All Souls Unitarian Church (#30)  
Credit: Hugh H. Henry  
Date: November 1981  
Negative filed at Vermont Division for  
Historic Preservation

South, east elevations; view looking northwest  
Photograph #24

# 23





81-A-271

Brattleboro Downtown Historic District  
Brattleboro, Vermont  
ex-All Souls Unitarian Parish House (#31)  
Credit: Hugh H. Henry  
Date: November 1981  
Negative filed at Vermont Division for  
Historic Preservation  
South, east elevations; view looking northwest  
Photograph #25



81-A-269

Brattleboro Downtown Historic District  
Brattleboro, Vermont

U.S. Post Office and Court House (#32)

Credit: Hugh H. Henry

Date: November 1981

Negative filed at Vermont Division for  
Historic Preservation

South, east elevations; view looking northwest  
Photograph #26



81A-269

Brattleboro Downtown Historic District  
Brattleboro, Vermont

Masonic Temple (#33)

Credit: Hugh H. Henry

Date: November 1981

Negative filed at Vermont Division for  
Historic Preservation

South, east elevations; view looking west  
Photograph #27



81-A-269

Brattleboro Downtown Historic District  
Brattleboro, Vermont  
First Baptist Church (#34)  
Credit: Hugh H. Henry  
Date: November 1981  
Negative filed at Vermont Division for  
Historic Preservation  
East, north elevations; view looking southwest  
Photograph #28





**BROWN & ROBERTS HARDWARE**

**SERVITAR**  
Brown & Roberts  
Hardware

BRATTLEBORO AREA  
CHAMBER OF COMMERCE  
182 MAIN STREET

**UNKIN' ONUTS**

Chamber of Commerce

World's Finest Coffee  
HOMESTYLE  
SOUPER SOUP

81-A-269

Brattleboro Downtown Historic District  
Brattleboro, Vermont  
Buildings #36, 35 (ex-Montgomery Ward)  
Credit: Hugh H. Henry  
Date: November 1981  
Negative filed at Vermont Division for  
Historic Preservation  
East elevations; view looking southwest  
Photograph #29



81-A-269

Brattleboro Downtown Historic District  
Brattleboro, Vermont  
Buildings #38, 37, 36, 35  
Credit: Hugh H. Henry  
Date: November 1981  
Negative filed at Vermont Division for  
Historic Preservation  
East, south elevations; view looking northwest  
Photograph #30



ARTHOE & ESTATE JEWELRY  
*Au Coin*  
**JEWELERS**  
DEMONSTRATION WATCHES REPAIRING

**PRIVATE PARKING ONLY**  
UNAUTHORIZED VEHICLES WILL BE IMPOUNDED

**PRIVATE LOT**  
UNAUTHORIZED VEHICLES  
WILL BE TOWED AWAY

OFFICES

W. M. MANNING  
BANK STORE

81-A-269

Brattleboro Downtown Historic District  
Brattleboro, Vermont

Manley Apartment Building (#38)

Credit: Hugh H. Henry

Date: November 1981

Negative filed at Vermont Division for  
Historic Preservation

South, east elevations; view looking northwest  
Photograph #31

#30



81-A-270

Brattleboro Downtown Historic District  
Brattleboro, Vermont  
Retting, Manley Brothers Blocks (#40, 39)  
Credit: Hugh H. Henry  
Date: November 1981  
Negative filed at Vermont Division for  
Historic Preservation  
North elevations; view looking southwest  
Photograph #32





81A-270

Brattleboro Downtown Historic District  
Brattleboro, Vermont  
Crosby Block (#42)  
Credit: Hugh H. Henry  
Date: November 1981  
Negative filed at Vermont Division for  
Historic Preservation  
East elevation; view looking northwest  
Photograph #33



81-A-270

Brattleboro Downtown Historic District  
Brattleboro, Vermont  
Vermont National Bank, Crosby Block (#43, 42)  
Credit: Hugh H. Henry  
Date: November 1981  
Negative filed at Vermont Division for  
Historic Preservation  
South, east elevations; view looking northwest  
Photograph #34



81-17-270

#34

Brattleboro Downtown Historic District  
Brattleboro, Vermont  
Market Block (#44)

Credit: Hugh H. Henry

Date: November 1981

Negative filed at Vermont Division for  
Historic Preservation

South, east elevations; view looking northwest  
Photograph #35

COMMON GROUND RESTAURANT

R HOTEL PHARMACY R

COMMON GROUND RESTAURANT



81-A-271

Brattleboro Downtown Historic District  
Brattleboro, Vermont  
ex-Central Fire Station (#45)  
Credit: Hugh H. Henry  
Date: November 1981  
Negative filed at Vermont Division for  
Historic Preservation  
West, south elevations; view looking northeast  
Photograph #36

#35





81-A-270

Brattleboro Downtown Historic District  
Brattleboro, Vermont  
Fisher or Grange Block (#46)  
Credit: Hugh H. Henry  
Date: November 1981  
Negative filed at Vermont Division for  
Historic Preservation  
South, east elevations; view looking west  
Photograph #37



R.E. DEMPSEY  
OPTICIANS  
LTD.

55  
HOURS  
MON-FRI 9-5  
SAT. 10-12

LJ SER  
fine ha

81-A-271

Brattleboro Downtown Historic District  
Brattleboro, Vermont  
Fisher or Grange Block (#46)  
Credit: Hugh H. Henry  
Date: November 1981  
Negative filed at Vermont Division for  
Historic Preservation  
West storefront; view looking north  
Photograph #38



81-A-271

Brattleboro Downtown Historic District  
Brattleboro, Vermont  
Elliot Street-scape toward Main St.; Emerson  
Block (#47) on right  
Credit: Hugh H. Henry  
Date: November 1981  
Negative filed at Vermont Division for  
Historic Preservation  
North elevation of #47; view looking east  
Photograph #39



81-A-271

Brattleboro Downtown Historic District  
Brattleboro, Vermont  
Emerson Block (#47)  
Credit: Hugh H. Henry  
Date: November 1981  
Negative filed at Vermont Division for  
Historic Preservation  
West, south elevations; view looking northeast  
Photograph #40





WORLD

RAWSON  
RESTAURANT  
Steak fish house

PINBALL WIZARD

PINBALL WIZARD  
Family entertainment

COMMISSIONER - SECTION 11

81-A-271

Brattleboro Downtown Historic District  
Brattleboro, Vermont  
Building #48  
Credit: Hugh H. Henry  
Date: November 1981  
Negative filed at Vermont Division for  
Historic Preservation  
North elevation; view looking south  
Photograph #41



81-A-271

Brattleboro Downtown Historic District  
Brattleboro, Vermont  
ex-Methodist Church (#50)  
Credit: Hugh H. Henry  
Date: November 1981  
Negative filed at Vermont Division for  
Historic Preservation  
North, east elevations; view looking southeast  
Photograph #42

#41



Securance  
**TAYLOR**  
INSURANCE AGENCY

Securance

CHRISTIAN SCIENCE  
READING ROOM

DEXTER'S  
HATS & LAID OUTFITS

LYON  
GENCO

BRATTLEBORO CO-OPERATIVE  
SAVINGS and LOAN  
ASSOCIATION

81-A-270

Brattleboro Downtown Historic District  
Brattleboro, Vermont  
Buildings #52, 51, 50  
Credit: Hugh H. Henry  
Date: November 1981  
Negative filed at Vermont Division for  
Historic Preservation  
North elevations; view looking southwest  
Photograph #43

#42



P  
PARKING

Securance  
TAYLOR  
INSURANCE AGENCY

DEPT. STORE  
NAVY

the good life

MEN'S SHOE SERVICE

Securance

CHRISTIAN SCIENCE  
READING ROOM

DEXTER'S  
HATS & LAUNDRY CLEANING

LYON & LEVEL  
AGENCY

NO TURN ON RED

81-A-270

B# 52-53

Brattleboro Downtown Historic District  
Brattleboro, Vermont  
Pentland Block (#53), Building #52  
Credit: Hugh H. Henry  
Date: November 1981  
Negative filed at Vermont Division for  
Historic Preservation  
East, north elevations; view looking south  
Photograph #44





81-A-270

Brattleboro Downtown Historic District  
Brattleboro, Vermont  
Barber Building (#54)  
Credit: Hugh H. Henry  
Date: November 1981  
Negative filed at Vermont Division for  
Historic Preservation  
South, east elevations; view looking north-  
west  
Photograph #45



17 FLAT STREET

SUGAR

81-A-291

Brattleboro Downtown Historic District  
Brattleboro, Vermont

Buildings #56, 55 (front); #54 (rear)

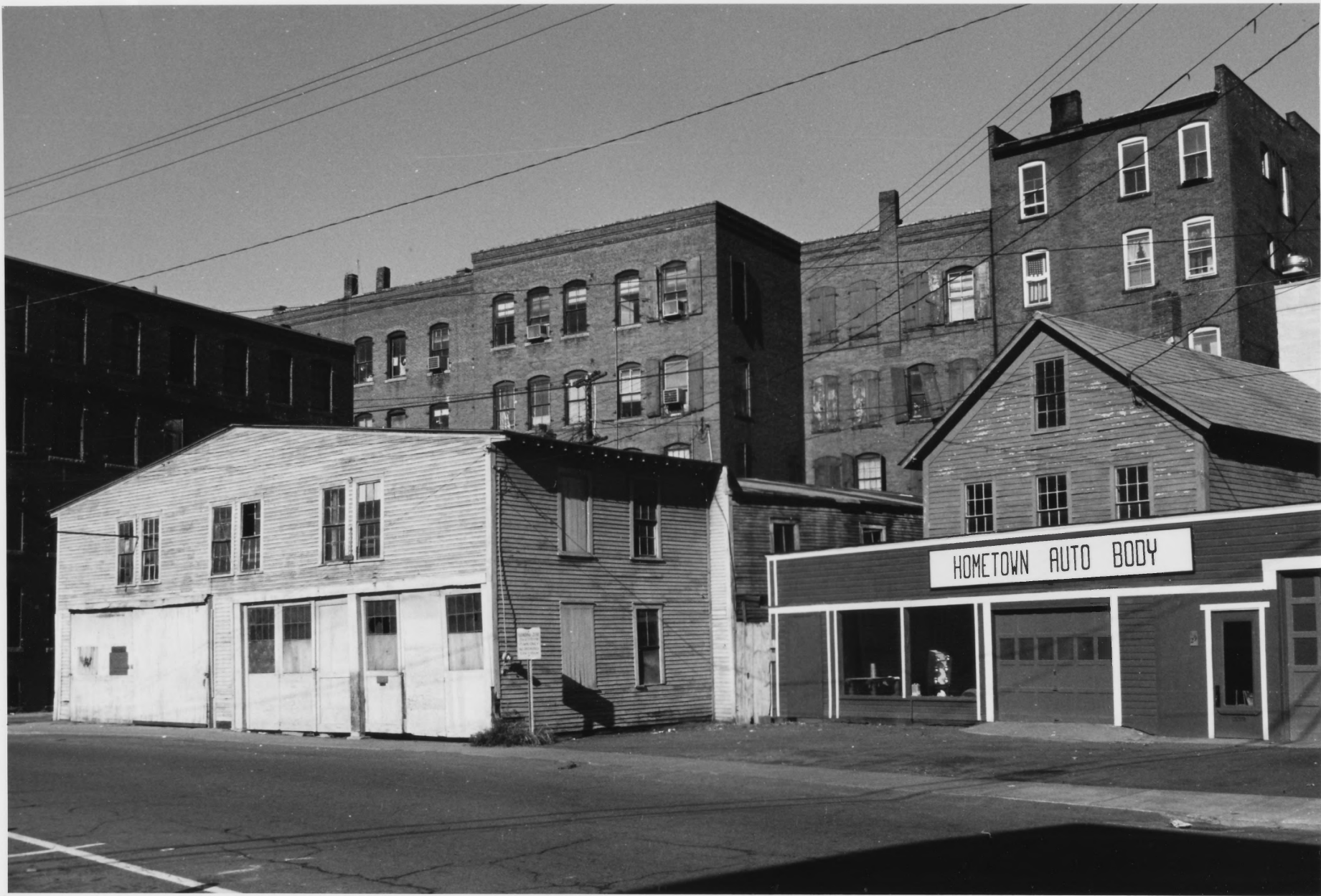
Credit: Hugh H. Henry

Date: November 1981

Negative filed at Vermont Division for  
Historic Preservation

West, south elevations; view looking northeast  
Photograph #46

B. #56-55



81-A-270

Brattleboro Downtown Historic District  
Brattleboro, Vermont

Credit: Hugh H. Henry

Date: November, 1981

Negative Filed at Vermont Division for  
Historic Preservation

Description: Buildings #58, 57 (front); #47,  
48 (rear); south, east elevations; View  
looking Northwest

Photograph 47



**SANEL**  
AUTO PARTS INC.

**AMAL**  
AMAL BATTERY  
AMAL BATTERY DIV. OF DELCO

**DIETZ**  
DIETZ BATTERY  
DIETZ BATTERY DIV. OF DELCO

**WALKER**  
WALKER BATTERY  
WALKER BATTERY DIV. OF DELCO

**REPAIRS**  
REPAIRS

**TRUCK**  
TRUCK

**WHITAKER**  
WHITAKER BATTERY  
WHITAKER BATTERY DIV. OF DELCO

**WIRE & CABLE**  
WIRE & CABLE

**RECORD**  
RECORD

**SANEL AUTO PARTS** Headquarters for AC-Delco Parts

**SANEL**  
AUTO PARTS

81A-271

Brattleboro Downtown Historic District  
Brattleboro, Vermont

DeWitt Block (#59)

Credit: Hugh H. Henry

Date: November 1981

Negative filed at Vermont Division for  
Historic Preservation

West, south elevations; view looking northeast  
Photograph #48





81A-270

Brattleboro Downtown Historic District  
Brattleboro, Vermont  
Latchis Hotel (#61); Mosher Block (#60)  
Credit: Hugh H. Henry  
Date: November 1981  
Negative filed at Vermont Division for  
Historic Preservation  
North elevations; view looking southwest  
Photograph #49



LATCHIS

P  
PARKING

LATCHIS  
THEATER

LATCHIS THEATER  
DRAGONSLAYER PG.  
DAILY 7:05 & 9 PM  
MAY SAT SUN 2 PM

HOTEL LATCHIS

HOTEL  
WALKER

81-A-270

#45

Brattleboro Downtown Historic District  
Brattleboro, Vermont  
Latchis Hotel (#61)  
Credit: Hugh H. Henry  
Date: November 1981  
Negative filed at Vermont Division for  
Historic Preservation  
East elevation; view looking southwest  
Photograph #50



MAYTAG

25

Art Works

LEWIS R. BROWN  
Kodak

JADE WAH  
CHINESE AMERICAN RESTAURANT

John White

81-7-270

Brattleboro Downtown Historic District  
Brattleboro, Vermont  
Wilder Building (#62)  
Credit: Hugh H. Henry  
Date: November 1981  
Negative filed at Vermont Division for  
Historic Preservation  
South, East elevations; view looking northwest  
Photograph #51