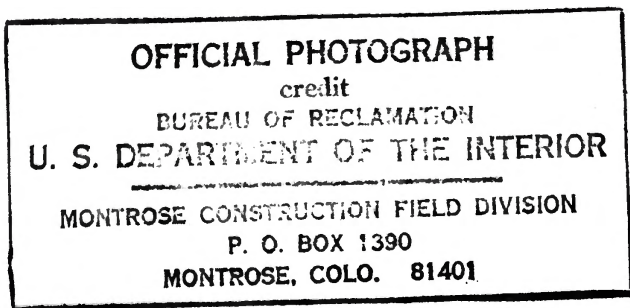




Larrison Tunnel
Montrose County, Co.

1 of 7

D&E
JUL 22 1979



JAN 25 1966

P31 - 427 - 4 NA



*Gunnison Tunnel
Montrose County, CO.*

2077

DoE

JUL 22 1979

OFFICIAL PHOTOGRAPH

credit

BUREAU OF RECLAMATION

U. S. DEPARTMENT OF THE INTERIOR

MONTROSE CONSTRUCTION FIELD DIVISION

P. O. BOX 1390

MONTROSE, COLO. 81401

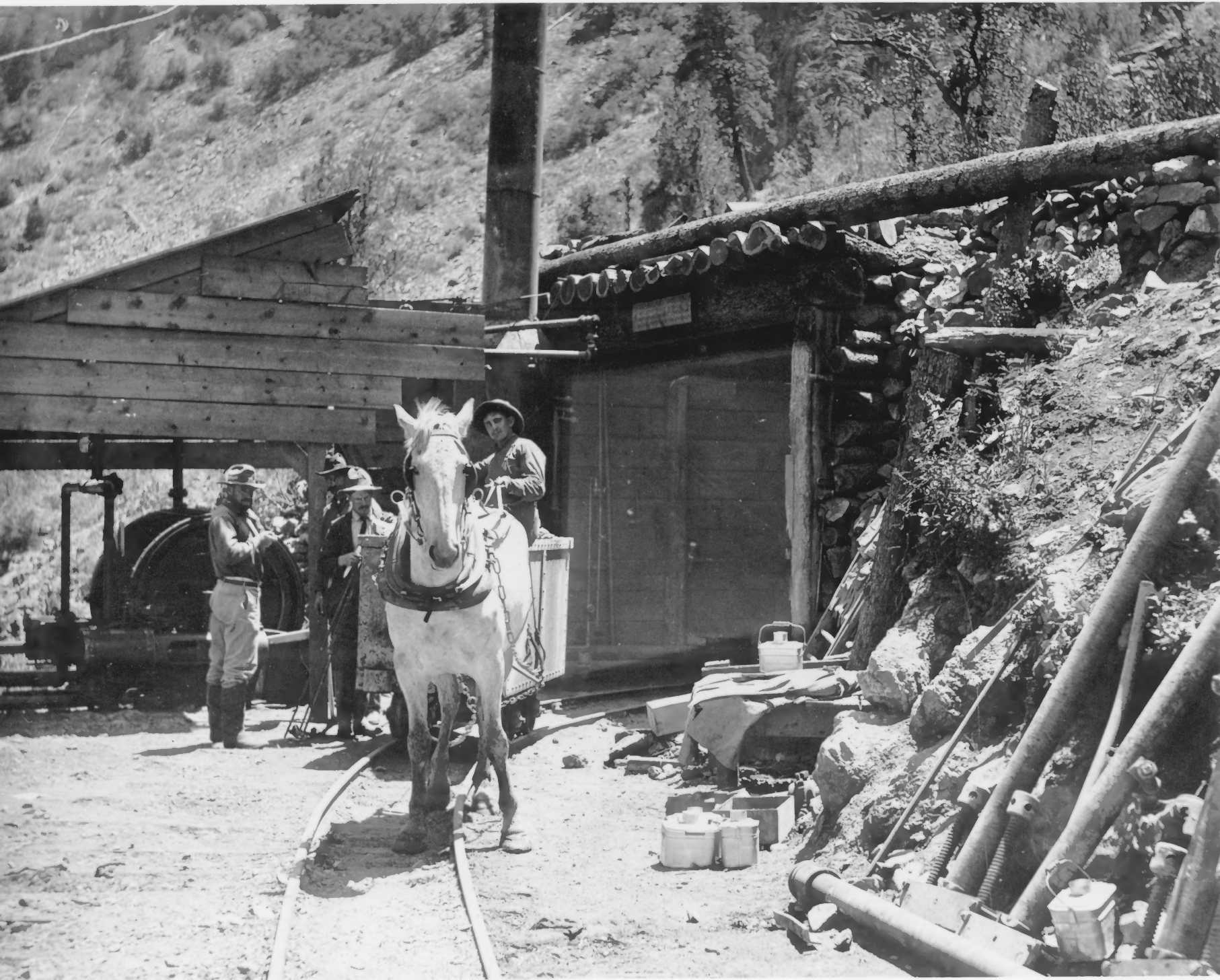
JAN 25 1966

P31

- 427 -

5

NA



Gunnison ~~County~~ Tunnel
Montrose County, CO.

3 of 7

DOE
JUL 22 1979

OFFICIAL PHOTOGRAPH

credit

BUREAU OF RECLAMATION

U. S. DEPARTMENT OF THE INTERIOR

MONTROSE CONSTRUCTION FIELD DIVISION

P. O. BOX 1390

MONTROSE, COLO. 81401

P81

-427-57

NA



Gunnison Tunnel
Montrose County, CO.

4 of 7

DOE
JUL 22 1979

OFFICIAL PHOTOGRAPH

credit

BUREAU OF RECLAMATION

U. S. DEPARTMENT OF THE INTERIOR

MONTROSE CONSTRUCTION FIELD DIVISION

P. O. BOX 1390

MONTROSE, COLO. 81401

P31 - 427-60

NA



*Harrison Tunnel
Montrose County Co.*

5 of 7

DOE

JUL 22 1979

OFFICIAL PHOTOGRAPH

credit

BUREAU OF RECLAMATION

U. S. DEPARTMENT OF THE INTERIOR

MONTROSE CONSTRUCTION FIELD DIVISION

P. O. BOX 1390

MONTROSE, COLO. 81401

P31

- 427 -

62 NA



Gunnison Tunnel
Montrose County, Co.

6 of 7

JUL 22 ^{DOE} 1979

OFFICIAL PHOTOGRAPH
credit
BUREAU OF RECLAMATION
U. S. DEPARTMENT OF THE INTERIOR
MONTROSE CONSTRUCTION FIELD DIVISION
P. O. BOX 1390
MONTROSE, COLO. 81401

MAY 4 1971

P31 - 427 - 279 NA



*Dunnison Tunnel
Montrose County, Co.*

7 of 7

DOE
JUL 22 1979

OFFICIAL PHOTOGRAPH

credit

BUREAU OF RECLAMATION

U. S. DEPARTMENT OF THE INTERIOR

MONTROSE CONSTRUCTION FIELD DIVISION

P. O. BOX 1390

MONTROSE, COLO. 81401

P31 - 427 - 339 NA