



1250/d

Carnegie Library  
Orange County, California

INTERIOR OF CENTRAL ROOM-CARNEGIE  
VIEW THROUGH WINDOWS SHOWS SEMI-  
CIRCULAR ROOM ADDED IN 1910. OLD  
CIRCULATION DESK IS IN CITY STORAGE  
YARD. DATE OF PHOTO UNKNOWN.

*DOE*  
OCT 22 1979

MAY 31 1978 *10/4*



DOE  
OCT 22 1979

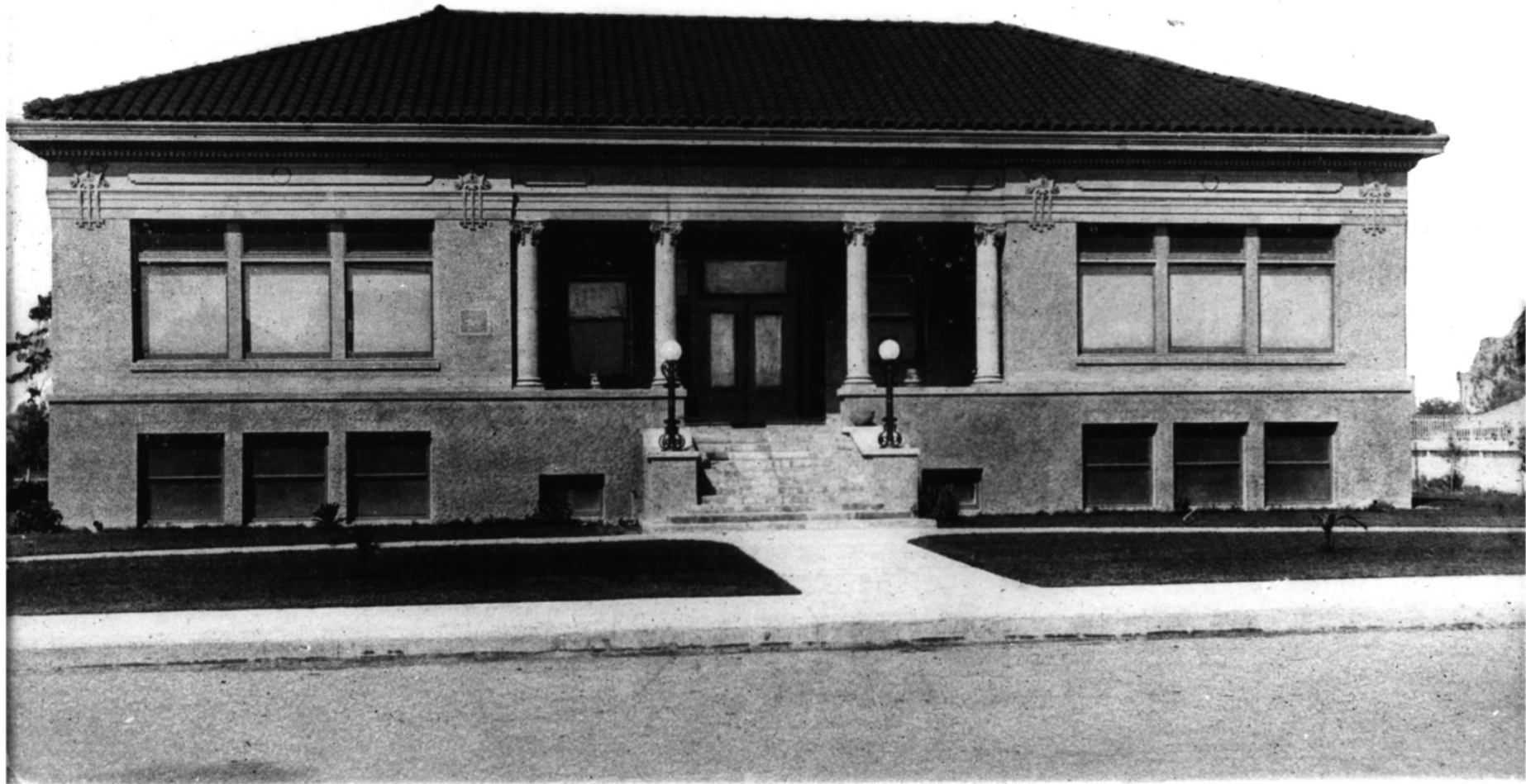
Carnegie Library  
Orange County, California

SOUTH READING ROOM - CARNEGIE  
THE LIBRARY REMAINED THIS WAY THROUGH  
THE 20's, 30's, and 40's. NOTE THE  
THREE ROCKING CHAIRS. THE FLOOR HAD  
BEEN COVERED WITH LINOLEUM WHICH WAS  
THEN COVERED WITH CARPET. DATE OF  
PHOTO UNCERTAIN BECAUSE ROOMS CHANG-  
ED SO LITTLE.

MAY 31 1978

294

Public Library, Anaheim, Cal.



Carnegie Library  
Orange County, California  
DDE

OCT 22 1979

MAY 31 1978

CARNEGIE LIBRARY EXTERIOR

THIS IS THE EARLIEST KNOWN PHOTO OF THE LIBRARY. UNTIL 1921 WHEN THE LOWER ENTRANCE WAS ADDED, THE LIBRARY REMAINED THE SAME EXCEPT FOR THE GROWTH OF THE PALM TREES. ALL ORNAMENTATION REMAINED UNTIL 1962.

30/4



PERSONNEL DEPARTMENT

MAY 31 1978

CARNEGIE LIBRARY  
(PERSONNEL DEPT.)

EXTERIOR PHOTO TAKEN IN 1977

243 S. ANAHEIM BLVD.

ANAHEIM, CAL.

*Orange County, California*

OCT 22 1979

DOE

494