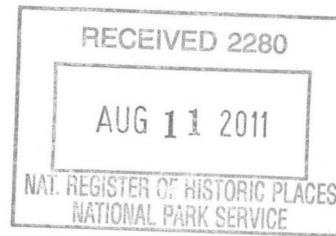


United States Department of the Interior  
National Park Service

National Register of Historic Places  
Registration Form



686

This form is for use in nominating or requesting determinations for individual properties and districts. See instructions in *How to Complete the National Register of Historic Places Registration Form* (National Register Bulletin 16A). Complete each item by marking "x" in the appropriate box or by entering the information requested. If an item does not apply to the property being documented, enter "N/A" for "not applicable." For functions, architectural classification, materials, and areas of significance, enter only categories and subcategories from the instructions. Place additional entries and narrative items on continuation sheets (NPS Form 10-900a). Use a typewriter, word processor, or computer, to complete all items.

1. Name of Property

historic name Okolona Colored High School Gymnasium

other names/site number Site #CL1022, Simmons High School Gymnasium

2. Location

street & number 767 Layne Street

☐ not for publication

city or town Okolona

☐ vicinity

state Arkansas code AR county Clark code 019 zip code 71962

3. State/Federal Agency Certification

As the designated authority under the National Historic Preservation Act, as amended, I hereby certify that this ☒ nomination ☐  
request for determination of eligibility meets the documentation standards for registering properties in the National Register of Historic  
Places and meets the procedural and professional requirements set for in 36 CFR Part 60. In my opinion, the property ☒ meets ☐  
does not meet the National Register criteria. I recommend that this property be considered significant

☐ nationally ☐ statewide ☒ locally. (See continuation sheet for additional comments.)

*Debbie Matthews*  
Signature of certifying official/Title

7/15/11  
Date

Arkansas Historic Preservation Program

State or Federal agency and bureau

In my opinion, the property ☐ meets ☐ does not meet the National Register criteria. (☐ See Continuation sheet for additional comments.)

\_\_\_\_\_  
Signature of certifying official/Title

\_\_\_\_\_  
Date

\_\_\_\_\_  
State or Federal agency and bureau

4. National Park Service Certification

I hereby certify that the property is:

☒ entered in the National Register.

☐ See continuation sheet

☐ determined eligible for the  
National Register.

☐ See continuation sheet

☐ determined not eligible for the  
National Register.

☐ removed from the National  
Register.

☐ other, (explain): \_\_\_\_\_

*Edson H. Beall*  
Signature of the Keeper

9-23-11  
Date of Action

Okolona Colored High School Gymnasium

Name of Property

Clark County, Arkansas

County and State

**5. Classification****Ownership of Property**

(Check as many boxes as apply)

- ☒ private  
☐ public-local  
☐ public-State  
☐ public-Federal

**Category of Property**

(Check only one box)

- ☒ building(s)  
☐ district  
☐ site  
☐ structure  
☐ object

**Number of Resources within Property**

(Do not include previously listed resources in count.)

Contributing

Noncontributing

1

buildings

sites

structures

objects

1

Total

**Name of related multiple property listing**

(Enter "N/A" if property is not part of a multiple property listing.)

N/A

**Number of Contributing resources previously listed  
in the National Register****6. Function or Use****Historic Functions**

(Enter categories from instructions)

RECREATION AND CULTURE/sports facility

**Current Functions**

(Enter categories from instructions)

VACANT/NOT IN USE

**7. Description****Architectural Classification**

(Enter categories from instructions)

OTHER/Plain-Traditional

**Materials**

(Enter categories from instructions)

foundation CONCRETE

walls CONCRETE BLOCK, METAL

roof METAL

other

**Narrative Description**

(Describe the historic and current condition of the property on one or more continuation sheets.)

United States Department of the Interior  
National Park Service

## National Register of Historic Places Continuation Sheet

Section number 7 Page 1

### SUMMARY

The Okolona Colored High School Gymnasium is a clay tile and metal building located at 767 Layne Street on the south side of Okolona, Clark County, Arkansas. The building was built in c.1950 and rests on a continuous cast-concrete foundation. Metal-framed awning windows fenestrate the building and a gabled metal roof caps the building.

### ELABORATION

The Okolona Colored High School Gymnasium, which is the last remaining building from the African-American school campus, is located at 767 Layne Street in Okolona, Clark County, Arkansas. The building was built c.1950 on the southern edge of Okolona. The building is a utilitarian, plain-traditional building, without any form of stylistic ornamentation.

The Okolona Colored High School Gymnasium rests on a continuous cast-concrete foundation and has clay tile walls near the front of the building. The rest of the building's walls are corrugated metal. The gable roof is metal. The main entrance of the building is on the west side and is sheltered by a shed-roofed awning. Metal-framed awning windows fenestrate the building.

### Front/West Façade

The front facade of the original building is oriented around the central entrance with double doors. The lower part of the façade, to the top of the entrance, is built out of clay tile blocks, while the rest of the façade is covered in corrugated metal. To the right and left of the central entrance were restroom entrances. In the 1970s, the central entrance was widened from a single door to double doors. Circa 2000, the doors to the right and left of the central entrance (the bathroom entrances) were bricked in. However, the shed-roofed awnings remain above these entrances. A louvered rectangular vent is also present in the gable peak.

### Side/South Façade

The south side of building is mainly covered with the corrugated metal, except for the lower part of the façade near the east west end, which is comprised of the clay-tile blocks. The clay-tile block portion of the façade is fenestrated by two four-pane, metal-framed, awning windows. Just to the east of the clay-tile block section of the façade is a four-pane, metal-framed, awning window low in the façade. Another window of this type is present at the west end of the façade. In between these windows, four, nine-pane, metal-framed awning windows are present near the top of the façade.

### Rear/East Façade

The rear facade of the building is sided with corrugated metal. The façade has a rectangular louvered vent in the gable peak and an original steel door near the north side of the façade.

**United States Department of the Interior**  
National Park Service

## **National Register of Historic Places**

### **Continuation Sheet**

Section number 7 Page 2

---

#### **Side/North Façade**

The north side of the building, like the south façade, is mainly covered with the corrugated metal, except for the lower part of the façade near the east west end, which is comprised of the clay-tile blocks. The clay-tile block portion of the façade is fenestrated by three four-pane, metal-framed, awning windows. The metal-sided portion of the façade is fenestrated by four, nine-pane, metal-framed awning windows near the top of the façade.

#### **Integrity**

The Okolona Colored High School Gymnasium retains good integrity. The only change to the building since it was built is the modification of the front entrance. The Okolona Colored High School Gymnasium retains its original windows – although many of the panes are missing – siding, and roof material. The setting around the building has changed somewhat as buildings from the Okolona Colored High School campus have been demolished. However, Okolona has remained a small town, just as it was c.1950, so that the setting around the Okolona Colored High School Gymnasium still reflects the small-town setting of the 1950s.



**8. Statement of Significance****Applicable National Register Criteria**

(Mark "x" in one or more boxes for the criteria qualifying the property for National Register listing.)

- ☒ **A** Property is associated with events that have made a significant contribution to the broad patterns of our history.
- ☐ **B** Property is associated with the lives of persons significant in our past.
- ☐ **C** Property embodies the distinctive characteristics of a type, period, or method of construction or represents the work of a master, or possesses high artistic values, or represents a significant and distinguishable entity whose components lack individual distinction.
- ☐ **D** Property has yielded, or is likely to yield, information important in prehistory or history.

**Criteria Considerations**

(Mark "x" in all the boxes that apply.)

Property is:

- ☐ **A** owned by a religious institution or used for religious purposes.
- ☐ **B** removed from its original location.
- ☐ **C** birthplace or grave of a historical figure of outstanding importance.
- ☐ **D** a cemetery.
- ☐ **E** a reconstructed building, object, or structure.
- ☐ **F** a commemorative property
- ☐ **G** less than 50 years of age or achieved significance within the past 50 years.

**Levels of Significance** (local, state, national)

Local

**Areas of Significance** (Enter categories from instructions)

ETHNIC HERITAGE/Black

**Period of Significance**

c.1950-1961

**Significant Dates**

c.1950

**Significant Person** (Complete if Criterion B is marked)**Cultural Affiliation** (Complete if Criterion D is marked)**Architect/Builder****Narrative Statement of Significance**

(Explain the significance of the property on one or more continuation sheets.)

**9. Major Bibliographical References****Bibliography**

(Cite the books, articles, and other sources used in preparing this form on one or more continuation sheets.)

**Previous documentation on file (NPS):**

- ☐ preliminary determination of individual listing (36 CFR 67) has been requested
- ☐ previously listed in the National Register
- ☐ Previously determined eligible by the National Register
- ☐ designated a National Historic Landmark
- ☐ recorded by Historic American Buildings Survey  
# \_\_\_\_\_
- ☐ recorded by Historic American Engineering  
Record # \_\_\_\_\_

**Primary location of additional data:**

- ☒ State Historic Preservation Office
- ☐ Other State Agency
- ☐ Federal Agency
- ☐ Local Government
- ☐ University
- ☐ Other

Name of repository:  
\_\_\_\_\_

United States Department of the Interior  
National Park Service

## National Register of Historic Places Continuation Sheet

Section number 8 Page 1

### SUMMARY

The Okolona Colored High School Gymnasium is being nominated to the National Register of Historic Places under **Criterion A** with **local significance** for its associations with African-American education in Okolona and Clark County. The Okolona Colored High School Gymnasium, which was built c.1950, is the last remaining building from the Okolona Colored School campus, which was Okolona's African-American school. As the site of sporting events and other community gatherings, the Okolona Colored High School Gymnasium has been an important community center and gathering place for Okolona's African-American community over the past fifty plus years.

### ELABORATION

Settlement in the area that is now Clark County began in 1811 in the vicinity of Arkadelphia and Okolona. In addition, Jacob and Abram Wells settled in the Hollywood vicinity in 1811 or 1812 and William Stroud also settled in the area shortly afterwards.<sup>1</sup> Settlement in the southern part of the county, however, did not occur until around the middle of the 1800s. By 1854, only one road reached into southern Clark County, and it connected Arkadelphia with Rome on the Ouachita River. Only one other settlement was present. The settlement of Beech Creek, which had a post office from 1852 until 1866, was isolated in the south-central part of the county.<sup>2</sup>

Okolona came into existence prior to the 1850s, since its post office was established on June 8, 1858, with Ashley Sloan as the first postmaster. The town quickly grew with a general store run by W. J. Bell established in 1868. By the late 1880s, Okolona was described as follows:

Okolona is situated in the western part of the county on the Southwestern Arkansas & Indian Territory Railroad, fourteen miles in a direction a little north of west from Smithton, on the Iron Mountain Railroad. The population is about 500. It is surrounded with the best agricultural lands of the county, and has the trade of a large scope of country. It is a neat and pretty town, and its principal business is the cotton trade. Several thousand bales of cotton are annually shipped away. The place contains five general stores, two drug stores, a millinery store, a furniture and undertaking store, several steam cotton-gins and corn-mills, a livery stable, a number of mechanics' shops, three hotels, five physicians, a weekly newspaper, a post-office, three churches – Methodist Episcopal, South, Missionary Baptist and Christian – a public school, and a lodge each of Masons and Knights of Honor. The Okolona

<sup>1</sup> *Biographical and Historical Memoirs of Southern Arkansas*. Chicago: The Goodspeed Publishing Co., 1890, p. 115.

<sup>2</sup> *Colton's railroad & township map of Arkansas*. Map. New York, D. F. Shall, 1854.

United States Department of the Interior  
National Park Service

## National Register of Historic Places Continuation Sheet

Section number 8 Page 2

Messenger, a seven-column newspaper, is owned by Ross & Hays, and is edited and published weekly by S. P. Meador, editor and publisher. It is Democratic in politics.<sup>3</sup>

From its earliest days, education was an important part of life in Okolona. The town's first school was a log building that had been built specifically for school and as a place to hold public gatherings. However, by the 1850s, a new building was needed, and a two-story building was built in 1859 at the same location. Information on the building is conflicting, but it was either a log building covered with siding or a frame building. In any case, it was owned by the local Masonic lodge, which had been formed in 1857, and they used the upper floor as their lodge.<sup>4</sup>

One school that operated out of the two-story building was the Okolona Male and Female Institute, which, according to an advertisement in the *Southern Standard* had begun classes in January 1871 and was managed by J. C. Wright. Charles Cargile was president of the Institute's board of trustees. Tuition fees for the Institute "ranged from two dollars per month for First Class Spelling, Reading and Writing, to five dollars a month for Fourth Class Ancient Languages and Higher Mathematics." In addition to the Institute, W. B. Carpenter opened a Male and Female School in January 1873, and advertisements from the period indicate that Carpenter, who "came highly recommended as an accomplished gentleman and successful teacher," was assisted by "competent teachers."<sup>5</sup>

Although the first Okolona High School was built in 1890, "The Academy," as the two-story building was referred to, remained until 1927 when it was demolished. After the building's demolition, the Masons deeded the site to the Okolona School District.<sup>6</sup>

Interestingly, it was not just the education of whites that was important to the people of Okolona in the late 1800s. African-American education was also important to the town's residents. The first school for black children consisted of a five-month term that was taught by Jim Townsend in the black Baptist church. When Townsend left, Ap Weir served as the next teacher. Both Townsend and Weir were white, and it was not until the early 1900s that a man named Tennison was hired as the first black teacher. Charles Cargile, the

<sup>3</sup> *Biographical and Historical Memoirs of Southern Arkansas*. Chicago: The Goodspeed Publishing Co., 1890, p. 121.

<sup>4</sup> Richter, Wendy, ed. *Clark County, Arkansas: Past and Present*. Arkadelphia, AR: Clark County Historical Association, 1992, p. 290.

<sup>5</sup> Richter, Wendy, ed. *Clark County, Arkansas: Past and Present*. Arkadelphia, AR: Clark County Historical Association, 1992, p. 290.

<sup>6</sup> Richter, Wendy, ed. *Clark County, Arkansas: Past and Present*. Arkadelphia, AR: Clark County Historical Association, 1992, p. 290.

United States Department of the Interior  
National Park Service

## National Register of Historic Places Continuation Sheet

Section number 8 Page 3

president of the Okolona Male and Female Institute's board of trustees, donated the land for the first black school, which was located where the Okolona School Gymnasium is today.<sup>7</sup>

Although it is not known when the first school was built on the site, it is known that the Rosenwald Fund helped fund a building in 1928. The two-room building, which also had a small lunch room, was built for a total of \$3,000. Of that cost, \$500 came from the local black community, \$2,000 came from public funds, and \$500 came from the Rosenwald Fund.<sup>8</sup> By 1940, the school had four teachers, including principal Robert L. Wiley.<sup>9</sup>

By the 1946-1947 school year, the school term lasted seven months and there were eight teachers at the school. In addition, the school became an accredited junior high school. The following school year, the school term increased to eight months, sometimes referred to as a split term because it consisted of a six-month regular term and a two-month summer term. During the late 1940s, there were three other school districts, namely, Pleasant Grove, Holly Grove and Burtzell, but they were soon consolidated into what became known as the Okolona Colored High School. During the 1948-49 school year, the school became an accredited four-year high school. Also, during the late 1940s, three busses were purchased and the number of faculty members had increased to fourteen.<sup>10</sup>

However, the changes that occurred to the school campus, were not just limited to the length of the term and the number of faculty. By the late 1940s, it became necessary to enlarge the school's physical plant, and a vocational agriculture building, a cafeteria and three more classrooms were built. During the 1949-1950 school year, a new home economics building was built, as was the gymnasium.<sup>11</sup>

The gymnasium needed to be a functional building that could serve the school community, as well as the Okolona community at large. The building chosen was developed by Armco, and would have been an easy building to construct for the campus. Armco entered into the building business in 1929 when the Dixie Culvert and Metal Company bought a majority interest in the Harry Brothers Company of New Orleans. Dixie got full ownership of the company in 1934 and it was renamed the Iron and Steel Products Company,

<sup>7</sup> Richter, Wendy, ed. *Clark County, Arkansas: Past and Present*. Arkadelphia, AR: Clark County Historical Association, 1992, p. 290.

<sup>8</sup> Porter, David. W. "A Brief History of the Julius Rosenwald Fund Building Program with Special Reference to Arkansas." Unpublished Master's thesis, Fisk University, Nashville, TN, 1951, Table IX.

<sup>9</sup> Richter, Wendy, ed. *Clark County, Arkansas: Past and Present*. Arkadelphia, AR: Clark County Historical Association, 1992, p. 290.

<sup>10</sup> Information on the Okolona School Gymnasium in the files of the Arkansas Historic Preservation Program.

<sup>11</sup> Information on the Okolona School Gymnasium in the files of the Arkansas Historic Preservation Program.



United States Department of the Interior  
National Park Service

## National Register of Historic Places Continuation Sheet

Section number 8 Page 4

Inc. In December 1942, the company was dissolved when it became a part of Armco Drainage and Metal Products, Inc. The company remains in business today as AK Steel.<sup>12</sup>

Shortly after the gymnasium was built, during the 1951-1952 school year, further changes came to the campus, most notably a change in the school's name. The people of the community felt that the school needed a name change. Elnora Gatlin made the motion and it was seconded by many to change the name in honor of a faithful and loyal teacher, Mrs. Alma Frazier Simmons. As a result, the school became known as Simmons High School.<sup>13</sup>

By the late 1960s, further consolidation struck Clark County and in 1969 Simmons and Okolona high schools consolidated. During the late 1970s and early 1980s all of the buildings on the Simmons campus were demolished except the gym and agri. shop. The shop was torn down in the mid 1980s, leaving the gymnasium as the last remaining building on the Simmons campus.<sup>14</sup>

Today, the Okolona Colored High School Gymnasium is an important surviving building related to African-American education in Okolona and Clark County. As an integral part of the Okolona School campus since c.1950, the Okolona Colored High School Gymnasium was an important meeting place for students and members of Okolona's African-American community. Hopefully, through the efforts of the Simmons High School Alumni Association, the Okolona Colored High School Gymnasium will remain an important part of Okolona and an important resource for its residents.

### STATEMENT OF SIGNIFICANCE

The Okolona Colored High School Gymnasium is being nominated to the National Register of Historic Places under **Criterion A** with **local significance** for its associations with African-American education in Okolona and Clark County. The Okolona Colored High School Gymnasium, which was built c.1950, is the last remaining building from the Okolona Colored School campus, which was Okolona's African-American school. As the site of sporting events and other community gatherings, the Okolona Colored High School Gymnasium has been an important community center and gathering place for Okolona's African-American community over the past fifty plus years.

<sup>12</sup> Information on Armco found at: [http://www.steelox.com/pdf/history\\_brochure.pdf](http://www.steelox.com/pdf/history_brochure.pdf).

<sup>13</sup> Information on the Okolona School Gymnasium in the files of the Arkansas Historic Preservation Program.

<sup>14</sup> Information on the Okolona School Gymnasium in the files of the Arkansas Historic Preservation Program.



United States Department of the Interior  
National Park Service

## National Register of Historic Places Continuation Sheet

Section number 9 Page 1

---

### BIBLIOGRAPHY

*Biographical and Historical Memoirs of Southern Arkansas*. Chicago: The Goodspeed Publishing Co., 1890.

*Colton's railroad & township map of Arkansas*. Map. New York, D. F. Shall, 1854.

*The Clark County Historical Journal*, Volume Number 2. Published by the Clark County Historical Association, Spring 1978.

Information on Armco found at: [http://www.steelox.com/pdf/history\\_brochure.pdf](http://www.steelox.com/pdf/history_brochure.pdf).

Information on the Okolona Colored High School Gymnasium in the files of the Arkansas Historic Preservation Program.

Porter, David. W. "A Brief History of the Julius Rosenwald Fund Building Program with Special Reference to Arkansas." Unpublished Master's thesis, Fisk University, Nashville, TN, 1951.

Richter, Wendy, ed. *Clark County, Arkansas: Past and Present*. Arkadelphia, AR: Clark County Historical Association, 1992.

Okolona Colored High School Gymnasium  
Name of Property

Clark County, Arkansas  
County and State

## 10. Geographical Data

Acreeage of Property Approximately 1.5 acres.

### UTM References

(Place additional UTM references on a continuation sheet.)

1 15 468576 3761560  
Zone Easting Northing  
2 \_\_\_\_\_

3 \_\_\_\_\_  
Zone Easting Northing  
4 \_\_\_\_\_

☐ See continuation sheet

### Verbal Boundary Description

(Describe the boundaries of the property on a continuation sheet.)

### Boundary Justification

(Explain why the boundaries were selected on a continuation sheet.)

## 11. Form Prepared By

name/title James Lockett, edited by Ralph S. Wilcox, National Register & Survey Coordinator  
organization Arkansas Historic Preservation Program date June 6, 2011  
street & number 1500 Tower Building, 323 Center Street telephone (501) 324-9787  
city or town Little Rock state AR zip code 72201

## Additional Documentation

Submit the following items with the completed form:

### Continuation Sheets

#### Maps

A **USGS map** (7.5 or 15 minute series) indicating the property's location

A **Sketch map** for historic districts and properties having large acreage or numerous resources.

#### Photographs

Representative **black and white photographs** of the property.

### Additional items

(Check with the SHPO or FPO for any additional items.)

## Property Owner

(Complete this item at the request of SHPO or FPO.)

name Simmons High Alumni Association, c/o James Lockett  
street & number 12699 Highway 51 South telephone \_\_\_\_\_  
city or town Okolona state AR zip code 71962

**Paperwork Reduction Act Statement:** This information is being collected for applications to the National Register of Historic Places to nominate properties for listing or determine eligibility for listing, to list properties, and to amend existing listing. Response to this request is required to obtain a benefit in accordance with the National Historic Preservation Act, as amended (16 U.S.C. 470 *et seq.*)

**Estimated Burden Statement:** Public reporting burden for this form is estimated to average 18.1 hours per response including time for reviewing instructions, gathering and maintaining data, and completing and reviewing the form. Direct comments regarding this burden estimate or any aspect of this form to the Chief, Administrative Services Division, National Park Service, P. O. Box 37127, Washington, DC 20013-7127; and the Office of Management and Budget, Paperwork Reductions Projects (1024-0018), Washington, DC 20303.

United States Department of the Interior  
National Park Service

## National Register of Historic Places Continuation Sheet

Section number 10 Page 1

---

### VERBAL BOUNDARY DESCRIPTION

Beginning at a point 90 feet North of the Southwest corner of the Northwest Quarter (NW  $\frac{1}{4}$ ) of the Northeast Quarter (NE  $\frac{1}{4}$ ) of Section 3, Township 9 South, Roange 22 West, and run thence North 210 feet, thence East 300 feet, thence South 210 feet, thence West 300 feet to the point of beginning, containing approximately one and one-half acres of land, more or less.

### BOUNDARY JUSTIFICATION

The boundary contains all of the land historically associated with the Okolona Colored High School Gymnasium.

UNITED STATES DEPARTMENT OF THE INTERIOR  
NATIONAL PARK SERVICE

NATIONAL REGISTER OF HISTORIC PLACES  
EVALUATION/RETURN SHEET

REQUESTED ACTION: NOMINATION

PROPERTY Okolona Colored High School Gymnasium  
NAME:

MULTIPLE  
NAME:

STATE & COUNTY: ARKANSAS, Clark

DATE RECEIVED: 8/11/11 DATE OF PENDING LIST: 9/08/11  
DATE OF 16TH DAY: 9/23/11 DATE OF 45TH DAY: 9/26/11  
DATE OF WEEKLY LIST:

REFERENCE NUMBER: 11000686

REASONS FOR REVIEW:

APPEAL: N DATA PROBLEM: N LANDSCAPE: N LESS THAN 50 YEARS: N  
OTHER: N PDIL: N PERIOD: N PROGRAM UNAPPROVED: N  
REQUEST: N SAMPLE: N SLR DRAFT: N NATIONAL: N

COMMENT WAIVER: N

☒ ACCEPT ☐ RETURN ☐ REJECT 9-23-11 DATE

ABSTRACT/SUMMARY COMMENTS:

Entered in  
The National Register  
of  
Historic Places

RECOM./CRITERIA \_\_\_\_\_

REVIEWER \_\_\_\_\_ DISCIPLINE \_\_\_\_\_

TELEPHONE \_\_\_\_\_ DATE \_\_\_\_\_

DOCUMENTATION see attached comments Y/N see attached SLR Y/N

If a nomination is returned to the nominating authority, the nomination is no longer under consideration by the NPS.







OKOLONA COLORED HIGH SCHOOL GYMNASIUM

CLARK COUNTY, AR

RALPH S. WILCOX

DECEMBER 2010

ARKANSAS HISTORIC PRESERVATION PROGRAM, LITTLE ROCK, AR

WEST FACADE, LOOKING EAST



OKOLONA COLORED HIGH SCHOOL GYMNASIUM

CLARK COUNTY, AR

RALPH S. WILCOX

DECEMBER 2010

ARKANSAS HISTORIC PRESERVATION PROGRAM, LITTLE ROCK, AR

NORTH FACADE, LOOKING SOUTHEAST





OKOLONA COLORED HIGH SCHOOL GYMNASIUM

CLARK COUNTY, AR

RALPH S. WILCOX

DECEMBER 2010

ARKANSAS HISTORIC PRESERVATION PROGRAM, LITTLE ROCK, AR

SOUTH FACADE, LOOKING NORTHEAST





OKOLONA COLORED HIGH SCHOOL GYMNASIUM

CLARK COUNTY, AR

RALPH S. WILCOX

DECEMBER 2010

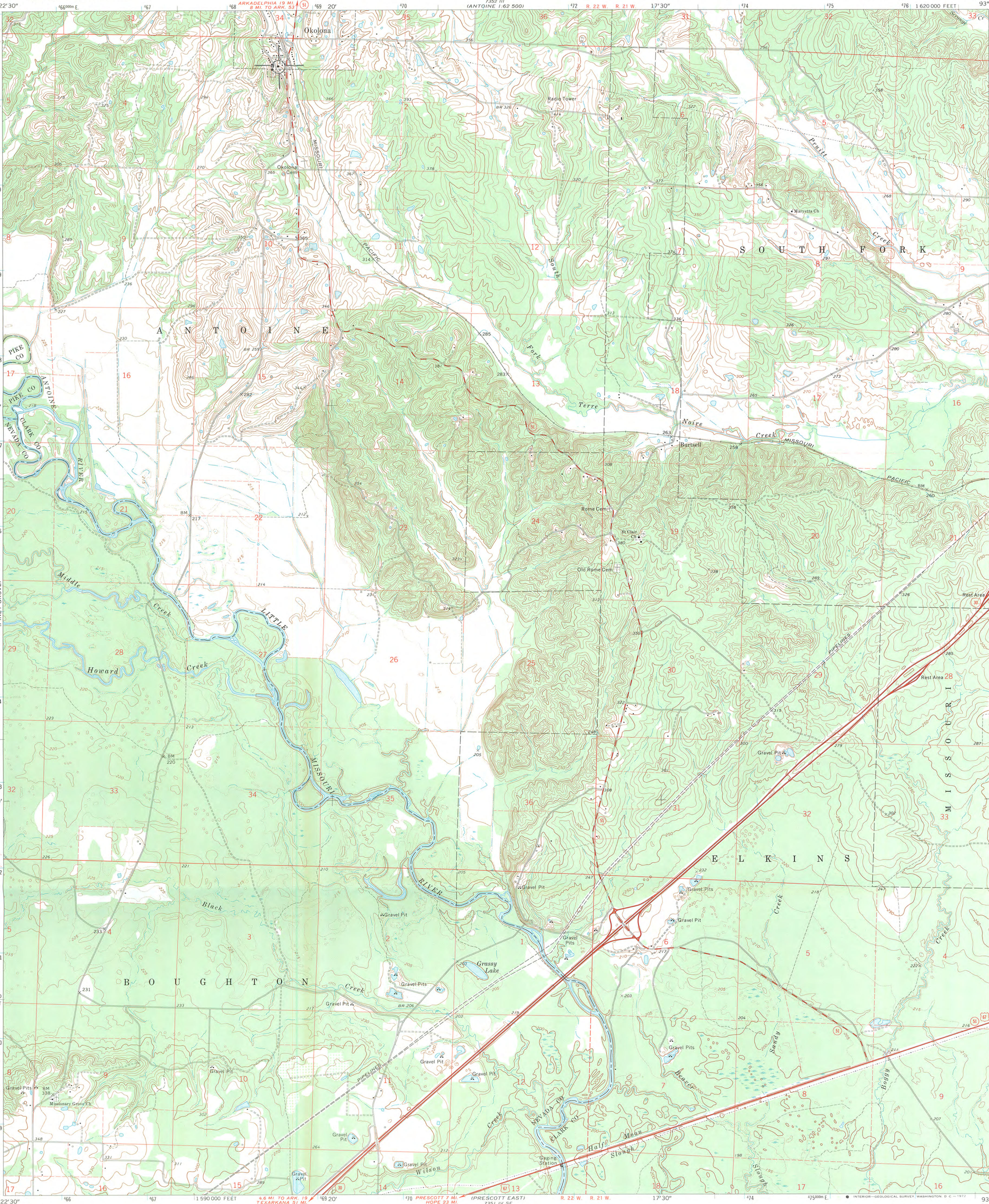
ARKANSAS HISTORIC PRESERVATION PROGRAM, LITTLE ROCK, AR

EAST FACADE, LOOKING SOUTHWEST

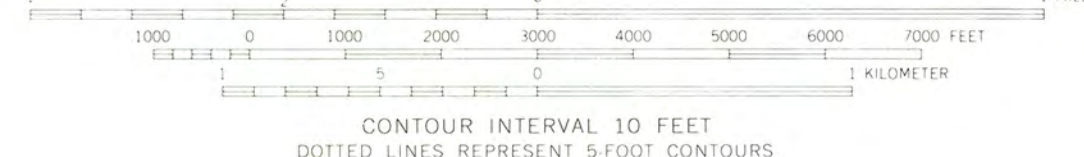
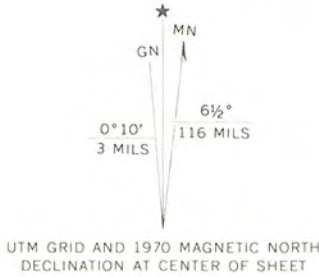


UNITED STATES  
DEPARTMENT OF THE INTERIOR  
GEOLOGICAL SURVEY

OKOLONA SOUTH QUADRANGLE  
ARKANSAS  
7.5 MINUTE SERIES (TOPOGRAPHIC)



Maped, edited, and published by the Geological Survey  
Control by USGS and USC&GS  
Topography by photogrammetric methods from aerial  
photographs taken 1968. Field checked 1970  
Polyconic projection. 1927 North American datum  
10,000-foot grid based on Arkansas coordinate system, south zone  
1000-meter Universal Transverse Mercator grid ticks,  
zone 15, shown in blue  
Fine red dashed lines indicate selected fence and field lines where  
generally visible on aerial photographs. This information is unchecked



THIS MAP COMPLIES WITH NATIONAL MAP ACCURACY STANDARDS  
FOR SALE BY U.S. GEOLOGICAL SURVEY, DENVER, COLORADO 80225, OR RESTON, VIRGINIA 22092  
AND ARKANSAS GEOLOGICAL COMMISSION, LITTLE ROCK, ARKANSAS 72204  
A FOLDER DESCRIBING TOPOGRAPHIC MAPS AND SYMBOLS IS AVAILABLE ON REQUEST



ROAD CLASSIFICATION  
Primary highway, all weather. Light-duty road, all weather,  
hard surface. Improved surface  
Secondary highway, all weather. Unimproved road, fair or dry  
hard surface. weather  
Interstate Route U.S. Route State Route

OKOLONA SOUTH, ARK.  
N3352.5-W9315.7/7.5

1970

AMS 7351 IV NE - SERIES V884





The Department of  
**Arkansas  
Heritage**

Mike Beebe  
Governor

Cathie Matthews  
Director

Arkansas Arts Council

\*

Arkansas Natural Heritage  
Commission

\*

Delta Cultural Center

\*

Historic Arkansas Museum

\*

Mosaic Templars  
Cultural Center

\*

Old State House Museum



Arkansas Historic  
Preservation Program

1500 Tower Building

323 Center Street

Little Rock, AR 72201

(501) 324-9880

fax: (501) 324-9184

tdd: (501) 324-9811

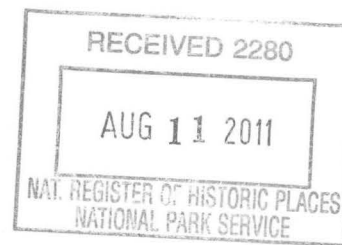
e-mail:

[info@arkansaspreservation.org](mailto:info@arkansaspreservation.org)

website:

[www.arkansaspreservation.com](http://www.arkansaspreservation.com)

An Equal Opportunity Employer



August 3, 2011

Ms. Carol Shull  
Chief of Registration  
United States Department of the Interior  
National Register of Historic Places  
National Park Service  
8th Floor  
1201 Eye Street, NW  
Washington, DC 20005

RE: Okolona Colored High School Gymnasium – Okolona,  
Clark County, Arkansas

Dear Carol:

We are enclosing for your review the above-referenced nomination. The Arkansas Historic Preservation Program has complied with all applicable nominating procedures and notification requirements in the nomination process.

If you need further information, please call Ralph S. Wilcox of my staff at (501) 324-9787. Thank you for your cooperation in this matter.

Sincerely,

Cathie Matthews  
State Historic Preservation Officer

CM:rsw

Enclosure