

United States Department of the Interior
National Park Service



381

National Register of Historic Places Registration Form

This form is for use in nominating or requesting determinations for individual properties and districts. See instructions in National Register Bulletin, *How to Complete the National Register of Historic Places Registration Form*. If any item does not apply to the property being documented, enter "N/A" for "not applicable." For functions, architectural classification, materials, and areas of significance, enter only categories and subcategories from the instructions. Place additional certification comments, entries, and narrative items on continuation sheets if needed (NPS Form 10-900a).

1. Name of Property

historic name Zattau, Dr. Charles and Louise, House

other names/site number N/A

2. Location

street & number 290 Lakeside Drive

city or town Milledgeville

state Georgia code GA county Baldwin code 009 zip code 31061

☐ not for publication
☐ vicinity

3. State/Federal Agency Certification

As the designated authority under the National Historic Preservation Act, as amended,

I hereby certify that this X nomination request for determination of eligibility meets the documentation standards for registering properties in the National Register of Historic Places and meets the procedural and professional requirements set forth in 36 CFR Part 60.

In my opinion, the property X meets does not meet the National Register Criteria. I recommend that this property be considered significant at the following level(s) of significance:

national statewide X local

Dr. David C. Crass
Signature of certifying official/Title

5-3-12
Date

Dr. David C. Crass/Historic Preservation Division Director/Deputy SHPO

Historic Preservation Division, Georgia Dept. of Natural Resources
State or Federal agency/bureau or Tribal Government

In my opinion, the property meets does not meet the National Register criteria.

Signature of commenting official

Date

Title

State or Federal agency/bureau or Tribal Government

4. National Park Service Certification

I hereby certify that this property is:

☒ entered in the National Register

☐ determined eligible for the National Register

☐ determined not eligible for the National Register

☐ removed from the National Register

☐ other (explain):

John Edgar H. Beall
Signature of the Keeper

7-3-12
Date of Action

Zattau, Dr. Charles and Louise, House
Name of Property

Baldwin County, Georgia
County and State

5. Classification

Ownership of Property

(Check as many boxes as apply.)

☒ private
☐ public - Local
☐ public - State
☐ public - Federal

Category of Property

(Check only **one** box.)

☒ building(s)
☐ district
☐ site
☐ structure
☐ object

Number of Resources within Property

(Do not include previously listed resources in the count.)

Contributing	Noncontributing	
1	0	buildings
1	0	sites
0	0	structures
0	0	objects
2	0	Total

Name of related multiple property listing

(Enter "N/A" if property is not part of a multiple property listing)

N/A

Number of contributing resources previously listed in the National Register

N/A

6. Function or Use

Historic Functions

(Enter categories from instructions.)

Domestic: single dwelling

Current Functions

(Enter categories from instructions.)

Domestic: single dwelling

7. Description

Architectural Classification

(Enter categories from instructions.)

Other: Ranch House

Materials

(Enter categories from instructions.)

foundation: Concrete

walls: Stone: granite

roof: Asphalt

other: Metal, Glass

Zattau, Dr. Charles and Louise, House
Name of Property

Baldwin County, Georgia
County and State

Narrative Description

(Describe the historic and current physical appearance of the property. Explain contributing and noncontributing resources if necessary. Begin with a **summary paragraph** that briefly describes the general characteristics of the property, such as its location, setting, size, and significant features.)

Summary Paragraph

The Dr. Charles and Louise Zattau House is a compact Ranch House in the Carrington Woods subdivision north of downtown Milledgeville in Baldwin County, Georgia. Carrington Woods features roughly 100 lots laid out along winding, curvilinear streets. Oliver Hardy Lake is located on the north side of the subdivision within view of the Zattau House. Completed in 1951, the Zattau house is a low, one-story Ranch House with a low-pitched hip roof and unusual pink granite walls. A picture window lights the living room; though most windows are double-hung sashes. The floor plan is zoned with the living room and dining room across the front of the house. The kitchen and den are located across the back. A small corridor provides access to the three bedrooms and two bathrooms on the west end of the house. Many of the interior finishes remain intact, including wood floors, pine paneling, plaster-over-sheetrock walls, and ceramic tiles in the bathroom. In addition, the basement includes a one-car garage and a reinforced-granite-and-concrete bomb shelter. Alterations to the house include the enclosing of the screened side porch with sash windows and the enclosing of the small rear terrace to enlarge the den. Historic landscape features include a concrete drive and a variety of mature trees and shrubs.

Narrative Description

The Dr. Charles and Louise Zattau House is a compact Ranch House, built in 1951, in the Carrington Woods subdivision north of downtown Milledgeville in Baldwin County, Georgia (photos 1-3, attachment 1). Carrington Woods features roughly 100 lots laid out along winding, curvilinear streets. Oliver Hardy Lake is located on the north side of the subdivision within view of the Zattau house (photo 4). The property is mostly grass lawn in the front lawn with large, pines and shrubs that frame views of the house (photo 1). The rear of the property is wooded with mature pine, oak, Japanese maple trees, and other shrubs. The concrete drive, which circles behind the house, was built in 1951 (photos 6-7).

The Zattau House is a low, one-story Ranch House with a low-pitched hip roof. As identified in *The Ranch House in Georgia: Guidelines for Evaluation*, the Zattau house is a Bungalow Ranch subtype, which is long and low, and deep as it is wide. The Bungalow Ranch has a mostly square plan and a hip roof. The Zattau house, like many Ranch Houses built in the 1950s, is plain without stylistic attributes. The uncoursed pink granite walls are unusual, found in only one other house in Milledgeville, and rare elsewhere in the state (photos 1-3).

The main façade features an entrance stoop and a picture window, which lights the living room. Most of the windows are single and paired double-hung sashes (photo 2). The master bedroom projects from the main façade and a sun porch, which was enclosed before 1965, projects on the east side. The granite chimney rises from the center of the house. A second chimney was added to the back of the house when the den was enlarged.

The rear elevation was altered when a small, uncovered terrace was used as the foundation for an expansion of the den (photo 5). The west side of the house is two stories in height as a result of the lot, which slopes down toward the west (photos 6-7). The west side of the main floor includes three bedroom windows and two, smaller bathroom windows. The basement level includes two steel-frame windows, a single-leaf wood door, and single-car garage door, which enables cars to pull under the house.

The interior floor plan is zoned with the formal living and dining rooms across the front of the house (photos 8-9). The kitchen and den are located at the back of the house (photos 12-13). The bedrooms, bathrooms, and hall are clustered at the west end (photo 10). The master bedroom is oriented to the front façade (photo 11). The house is supported by a forest of steel posts in basement (photos 14) and includes a one-car garage and a reinforced-granite-and-concrete bomb shelter (photos 15-16).

Many of the interior finishes remain intact, including wood floors, pine paneling, plaster-over-sheetrock walls, built-in book shelves in the den, and ceramic tiles in the bathroom. The Zattaus made a few changes to the house. They enclosed the

Zattau, Dr. Charles and Louise, House
Name of Property

Baldwin County, Georgia
County and State

sun room with sash windows (photo 5) and extended the den to the south over a small, rear porch (photo 13). In 1990, damage from a kitchen fire resulted in new kitchen cabinets, appliances, electrical wiring, and heating and air conditioning.

The Zattau house is surrounded by a mature landscape planted by the Zattau family. Louise Zattau was a long-time member of the Milledgeville Garden Club. The landscape includes mature pine, oak, hickory, magnolia, apple, cherry, dogwood, Japanese maple, holly, and a shagbark hickory. The property also includes crepe myrtle, camellias, gardenia bushes, quince bushes, azaleas, boxwood, and thousands of bulbs. The house is located adjacent to a lake in the Carrington Woods subdivision, which features curvilinear streets, irregularly shaped lots with ornamental plantings, and a variety of house styles and types.

Contributing and Noncontributing Resources

The Zattau house is counted as one contributing building.

The historic landscape, which is representative of landscapes associated with Ranch Houses, includes the mature plantings and the historic concrete drive, is counted as one contributing site.

Zattau, Dr. Charles and Louise, House
Name of Property

Baldwin County, Georgia
County and State

8. Statement of Significance

Applicable National Register Criteria

(Mark "x" in one or more boxes for the criteria qualifying the property for National Register listing.)

- ☐ A Property is associated with events that have made a significant contribution to the broad patterns of our history.
- ☐ B Property is associated with the lives of persons significant in our past.
- ☒ C Property embodies the distinctive characteristics of a type, period, or method of construction or represents the work of a master, or possesses high artistic values, or represents a significant and distinguishable entity whose components lack individual distinction.
- ☐ D Property has yielded, or is likely to yield, information important in prehistory or history.

Criteria Considerations

(Mark "x" in all the boxes that apply.)

Property is:

- ☐ A Owned by a religious institution or used for religious purposes.
- ☐ B removed from its original location.
- ☐ C a birthplace or grave.
- ☐ D a cemetery.
- ☐ E a reconstructed building, object, or structure.
- ☐ F a commemorative property.
- ☐ G less than 50 years old or achieving significance within the past 50 years.

Areas of Significance

(Enter categories from instructions.)

Architecture

Period of Significance

1951

Significant Dates

1951—Dr. Charles and Louise Zattau built their Ranch House in the Carrington Woods subdivision north of downtown Milledgeville.

Significant Person

(Complete only if Criterion B is marked above.)

N/A

Cultural Affiliation

N/A

Architect/Builder

N/A

Period of Significance (justification)

The period of significance is 1951, the year the Zattau House was constructed.

Criteria Considerations (explanation, if necessary)

N/A

Zattau, Dr. Charles and Louise, House
Name of Property

Baldwin County, Georgia
County and State

Statement of Significance Summary Paragraph (Provide a summary paragraph that includes level of significance and applicable criteria.)

The Dr. Charles and Louise Zattau House is significant at the local level of significance under National Register Criterion C in the area of architecture as an excellent example of a mid-20th-century Ranch House because its long, low proportions, hip roof, and zoned interior plan typify Ranch Houses that were built through the 1950s. The Zattaus were among the first to build in Carrington Woods, a new subdivision north of downtown Milledgeville, which was laid out in 1947. The Zattau house is among the first, and possibly the first, Ranch House in Milledgeville. As described in *The Ranch House in Georgia: Guidelines for Evaluation*, Ranch Houses are long and low with subtypes that vary in form from square, compact houses to long, rambling Ranches. Interiors are typically zoned to include open public rooms that are separate from private areas, such as bedrooms. The Ranch House was among the most popular house types in Georgia in the decades after World War II. In Georgia, as many as 200,000 Ranch Houses were built across the state in cities, suburbs, and rural areas between 1940 and 1960. In addition, to its Ranch House characteristics, the Zattau house also has a rare period atomic bomb shelter. The house is located in the mid-20th-century subdivision and its lot features period landscaping.

Narrative Statement of Significance (Provide at least one paragraph for each area of significance.)

The Dr. Charles and Louise Zattau House is significant at the local level of significance under National Register Criterion C in the area of architecture as an excellent example of a mid-20th-century Ranch House in Georgia because its long, low proportions, low-pitched hip roof, and zoned interior plan typify Ranch Houses that were built through the 1950s. The Zattaus were among the first to build in Carrington Woods, a new subdivision north of downtown Milledgeville, which was laid out in 1947. The Zattau house is among the first, and possibly the first, Ranch House in Milledgeville. The Zattau house is also exceptional for its pink granite walls, where most Ranch Houses were wood frame or clad in brick veneer.

The Ranch House emerged in the early 20th century as a new and revolutionary form of house that became the most popular type of house in the decades after World War II. Early Ranch Houses were inspired by 19th-century Spanish and Mexican haciendas in the American Southwest. These sprawling, rustic homesteads were single-pile structures organized around open courtyards and lined with porches. In the early 1900s, architects in California, such as Greene and Greene and William Wurster, designed modern adaptations of these haciendas or Ranch Houses, which embraced the Southern California climate with courtyards and porches for year-round outdoor living. Cliff May, architect and real-estate developer, emerged in the 1930s as one of the strongest proponents of the Ranch House, which he described as "informal yet gracious." These Ranch Houses were often organized around courtyards and included patios and terraces that provided space for outdoor living. Large picture windows and glass doors also brought nature inside.

By the late 1940s, the Ranch House was the prevailing favorite among homebuyers who purchased them by the thousands in suburbs across the country. As described in *The Ranch House in Georgia: Guidelines for Evaluation*, Ranch Houses are long and low with subtypes that vary in form from square, compact houses to long, rambling Ranches. Interiors are typically zoned to include open public rooms that are separate from private areas, such as bedrooms. Ranch Houses were designed from the 1940s through the 1960s in the modern Contemporary style, in historical revival styles, such as Colonial Revival, and without any elements of an architectural style.

In Georgia, according to *The Ranch House in Georgia: Guidelines for Evaluation*, Ranch Houses were most often built in suburban settings, which were popular among the post-World War II home-buying public. Federal Housing Administration mortgage insurance enabled the Ranch House to achieve ubiquity across the state. Ranch Houses were built as solitary houses or in small clusters on agricultural properties in rural settings, in corridors along roads and highways, as infill development around older neighborhoods, and in developer/builder-planned subdivisions. Ranch House subdivisions were built at the edges of the states major cities, such as Atlanta, Columbus, Macon, and Augusta. In smaller cities, subdivisions were built on the outskirts of downtowns. In Georgia, as many as 200,000 Ranch Houses were built across the state in cities, suburbs, and rural areas between 1940 and 1960, making the new Ranch House the most popular house type ever in the history of the state. These include high-style examples but the most common type is the small, plain brick-veneer Ranch House. The Zattau house, one of the first houses built in Milledgeville's post-World War II Carrington Woods subdivision, locally exemplifies this suburban developmental pattern.

Zattau, Dr. Charles and Louise, House
Name of Property

Baldwin County, Georgia
County and State

Developmental history/additional historic context information (if appropriate)

****The following developmental history derives from Gerald A. Johnson and Judy Johnson, "The Zattau House," *Historic Property Information Form*, January 2012. On file at the Historic Preservation Division, Georgia Department of Natural Resources, Atlanta, Georgia.**

In 1947, Dr. Charles and Louise Zattau purchased three adjoining lots in the Carrington Woods subdivision north of downtown Milledgeville. Carrington Woods, with its limited access to major roads and its winding, curvilinear streets, appealed to soldiers returning from service in World War II. Homebuyers were also attracted to the water and sewer service, which was usually not available to houses on the outskirts of town. Walter B. Williams, mayor of Milledgeville, was the primary developer of the new subdivision. The Zattaus were the fourth family to buy lots in Carrington Woods and they chose property at the corner of Lakeside Drive and Lakeshore Drive with a view of a lake. First called Carr Lake, and later Oliver Hardy Lake, the lake was formed by a dam adjacent to the Zattau property. The dam supported Lakeside Drive, a through street, which provided the neighborhood with access to North Columbia Street and downtown Milledgeville.

Dr. Zattau, who served as a dentist in the armed forces, and Louise Zattau were among the first to build in the new subdivision. The Zattaus hired an architect (not known) to design a granite Ranch House, which was completed in 1951. The Zattau house is among the first, and possibly the first, Ranch House in Milledgeville. The Zattaus, with their modern Ranch House, and Mayor Williams, with his Colonial Revival-style house, anchored opposite ends of the new subdivision.

The Zattaus had one child, Bill, who helped the family enclose two porches, probably before 1965. These included the sun room on the west end of the house and the extension of the den over a small porch at the rear (south side) of the house. In 1990, damage from a kitchen fire resulted in new kitchen cabinets, appliances, electrical wiring, and heating and air conditioning. Louise Zattau, a long-time member of the Milledgeville Garden Club, planted a variety of trees and shrubs on the property. The Zattaus remained in the house until Dr. Zattau died in 1985 and Louise Zattau lived in the house until 1997. Louise Zattau sold the property to the current owners, Gerald A. and Judy J. Johnson in 1998.

9. Major Bibliographical References

Bibliography (Cite the books, articles, and other sources used in preparing this form.)

Cloues, Richard. "The Ordinary Iconic Ranch House: Mid-20th-Century Ranch Houses in Georgia." February 2012 <http://georgiashpo.org/historic/housing>. Accessed April 24, 2012.

Johnson, Gerald A. and Judy J. Johnson. "The Zattau House." *Historic Property Information Form*, January 2012. On file at the Historic Preservation Division, Georgia Department of Natural Resources, Atlanta, Georgia.

Sullivan, Patrick, Mary Beth Reed, Tracey Fedor [and Richard Cloues]. *The Ranch House in Georgia: Guidelines for Evaluation*. Tucker, Ga.: Georgia Transmission Corporation, 2012.

Previous documentation on file (NPS):

☐ preliminary determination of individual listing (36 CFR 67 has been requested)
☐ previously listed in the National Register
☐ previously determined eligible by the National Register
☐ designated a National Historic Landmark
☐ recorded by Historic American Buildings Survey # _____
☐ recorded by Historic American Engineering Record # _____
☐ recorded by Historic American Landscape Survey # _____

Primary location of additional data:

☒ State Historic Preservation Office
☐ Other State agency
☐ Federal agency
☐ Local government
☐ University
☐ Other

Name of repository: _____

Historic Resources Survey Number (if assigned): _____

Zattau, Dr. Charles and Louise, House
Name of Property

Baldwin County, Georgia
County and State

10. Geographical Data

Acreage of Property Approximately one acre
(Do not include previously listed resource acreage.)

UTM References

(Place additional UTM references on a continuation sheet.)

A	17	291100	3664390
	Zone	Easting	Northing

Verbal Boundary Description (Describe the boundaries of the property.)

The National Register boundary is indicated by a heavy black line on the attached map, which is drawn to scale.

Boundary Justification (Explain why the boundaries were selected.)

The boundary includes the entire parcel purchased by the Zattaus in 1947.

11. Form Prepared By

name/title Steven Moffson, Architectural Historian
organization Historic Preservation Division, GA Dept. of Natural Resources date May 1, 2012
street & number 254 Washington Street, Ground Level telephone (404) 656-2840
city or town Atlanta State GA zip code 30034
e-mail Steven.moffson@dnr.state.ga.us

Additional Documentation

Submit the following items with the completed form:

- **Maps:** A **USGS map** (7.5 or 15 minute series) indicating the property's location.
A **Sketch map** for historic districts and properties having large acreage or numerous resources. Key all photographs to this map.
- **Continuation Sheets**
- **Additional items:** (Check with the SHPO or FPO for any additional items.)

Zattau, Dr. Charles and Louise, House
Name of Property

Baldwin County, Georgia
County and State

Photographs:

Submit clear and descriptive photographs. The size of each image must be 1600x1200 pixels at 300 ppi (pixels per inch) or larger. Key all photographs to the sketch map.

Name of Property: Zattau, Dr. Charles and Louise, House

City or Vicinity: Milledgeville

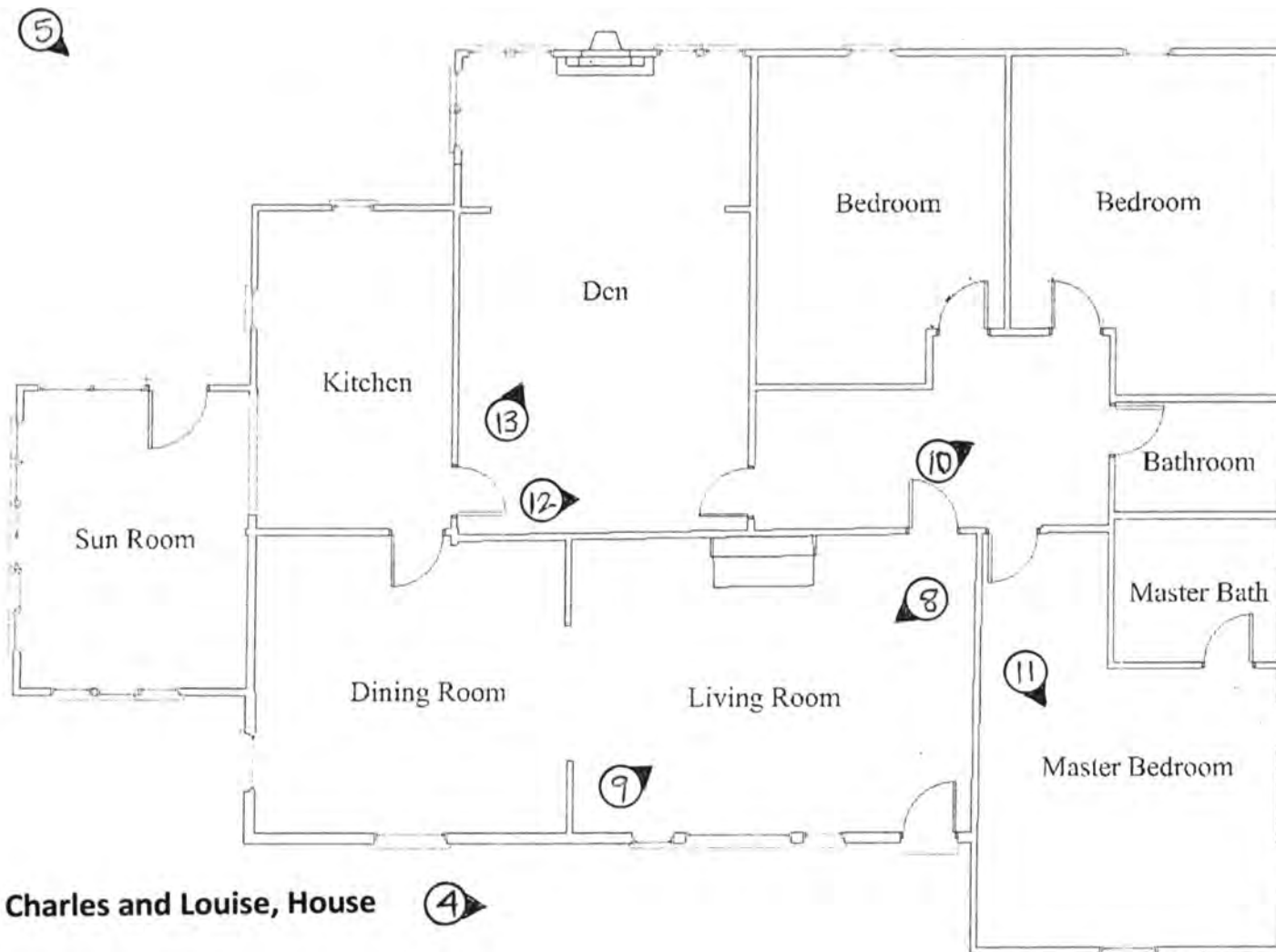
County: Baldwin State: Georgia

Photographer: Charlie Miller

Date Photographed: August 2011

Description of Photograph(s) and number:

- 1 of 17. Main facade, photographer facing south.
- 2 of 17. Main façade, photographer facing south.
- 3 of 17. Main and east sides, photographer facing southwest.
- 4 of 17. Main façade, entrance and, in background, Oliver Hardy Lake, photographer facing southwest.
- 5 of 17. Rear and east sides, photographer facing northwest.
- 6 of 17. West façade, photographer facing east.
- 7 of 17. West façade and drive, photographer facing south.
- 8 of 17. Interior, living room with view to dining room, photographer facing northeast.
- 9 of 17. Interior, living room, photographer facing southwest.
- 10 of 17. Interior, hall, photographer facing southwest.
- 11 of 17. Interior, master bedroom, photographer facing northwest.
- 12 of 17. Interior, den with view to hall, photographer facing west.
- 13 of 17. Interior, den, photographer facing south.
- 14 of 17. Interior, basement with steel columns, photographer facing southeast.
- 15 of 17. Interior, basement with stone-and-concrete bomb shelter, photographer facing southeast.
- 16 of 17. Interior, basement with interior view of bomb shelter, photographer facing east.
- 17 of 17. Interior, basement, metal-framed window, photographer facing west.



Zattau, Dr. Charles and Louise, House

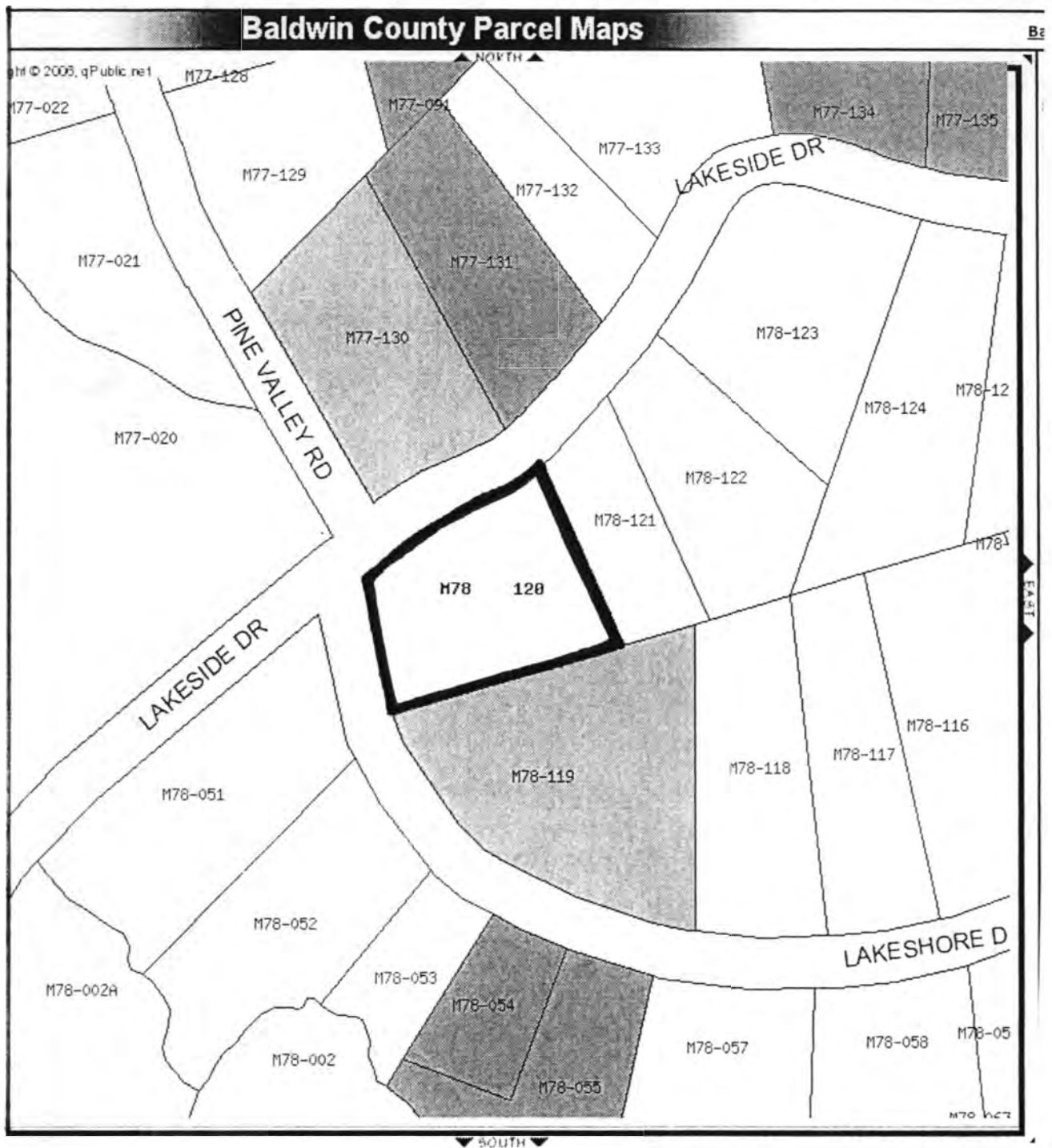
Baldwin County, Georgia

Main Floor Plan

Photo number/direction of view

No scale





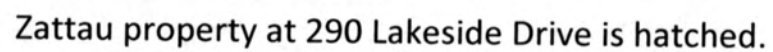
Zattau, Dr. Charles and Louise, House

Baldwin County, Georgia

National Register Boundary

Approximate scale: 1 inch = 130 feet





UNITED STATES DEPARTMENT OF THE INTERIOR
NATIONAL PARK SERVICE

NATIONAL REGISTER OF HISTORIC PLACES
EVALUATION/RETURN SHEET

REQUESTED ACTION: NOMINATION

PROPERTY NAME: Zattau, Dr. Charles and Louise, House

MULTIPLE
NAME:

STATE & COUNTY: GEORGIA, Baldwin

DATE RECEIVED: 5/18/12 DATE OF PENDING LIST: 6/13/12
DATE OF 16TH DAY: 6/28/12 DATE OF 45TH DAY: 7/04/12
DATE OF WEEKLY LIST:

REFERENCE NUMBER: 12000381

REASONS FOR REVIEW:

APPEAL: N DATA PROBLEM: N LANDSCAPE: N LESS THAN 50 YEARS: N
OTHER: N PDIL: N PERIOD: N PROGRAM UNAPPROVED: N
REQUEST: N SAMPLE: N SLR DRAFT: N NATIONAL: N

COMMENT WAIVER: N

☒ ACCEPT ☐ RETURN ☐ REJECT 7.3.12 DATE

ABSTRACT/SUMMARY COMMENTS:

Entered in
The National Register
of
Historic Places

RECOM./CRITERIA _____

REVIEWER _____ DISCIPLINE _____

TELEPHONE _____ DATE _____

DOCUMENTATION see attached comments Y/N see attached SLR Y/N

If a nomination is returned to the nominating authority, the nomination is no longer under consideration by the NPS.



Zattau, Dr. Charles and Louise, House
Baldwin County, Georgia
Photograph 1 of 17



Zattau, Dr. Charles and Louise, House
Baldwin County, Georgia
Photograph 2 of 17



Zattau, Dr. Charles and Louise, House
Baldwin County, Georgia
Photograph 3 of 17



Zattau, Dr. Charles and Louise, House
Baldwin County, Georgia
Photograph 4 of 17



Zattau, Dr. Charles and Louise, House
Baldwin County, Georgia
Photograph 5 of 17



Zattau, Dr. Charles and Louise, House
Baldwin County, Georgia
Photograph 6 of 17



Zattau, Dr. Charles and Louise, House
Baldwin County, Georgia
Photograph 7 of 17



Zattau, Dr. Charles and Louise, House
Baldwin County, Georgia
Photograph 8 of 17



Zattau, Dr. Charles and Louise, House
Baldwin County, Georgia
Photograph 9 of 17



Zattau, Dr. Charles and Louise, House
Baldwin County, Georgia
Photograph 10 of 17



Zattau, Dr. Charles and Louise, House
Baldwin County, Georgia
Photograph 11 of 17



Zattau, Dr. Charles and Louise, House
Baldwin County, Georgia
Photograph 12 of 17



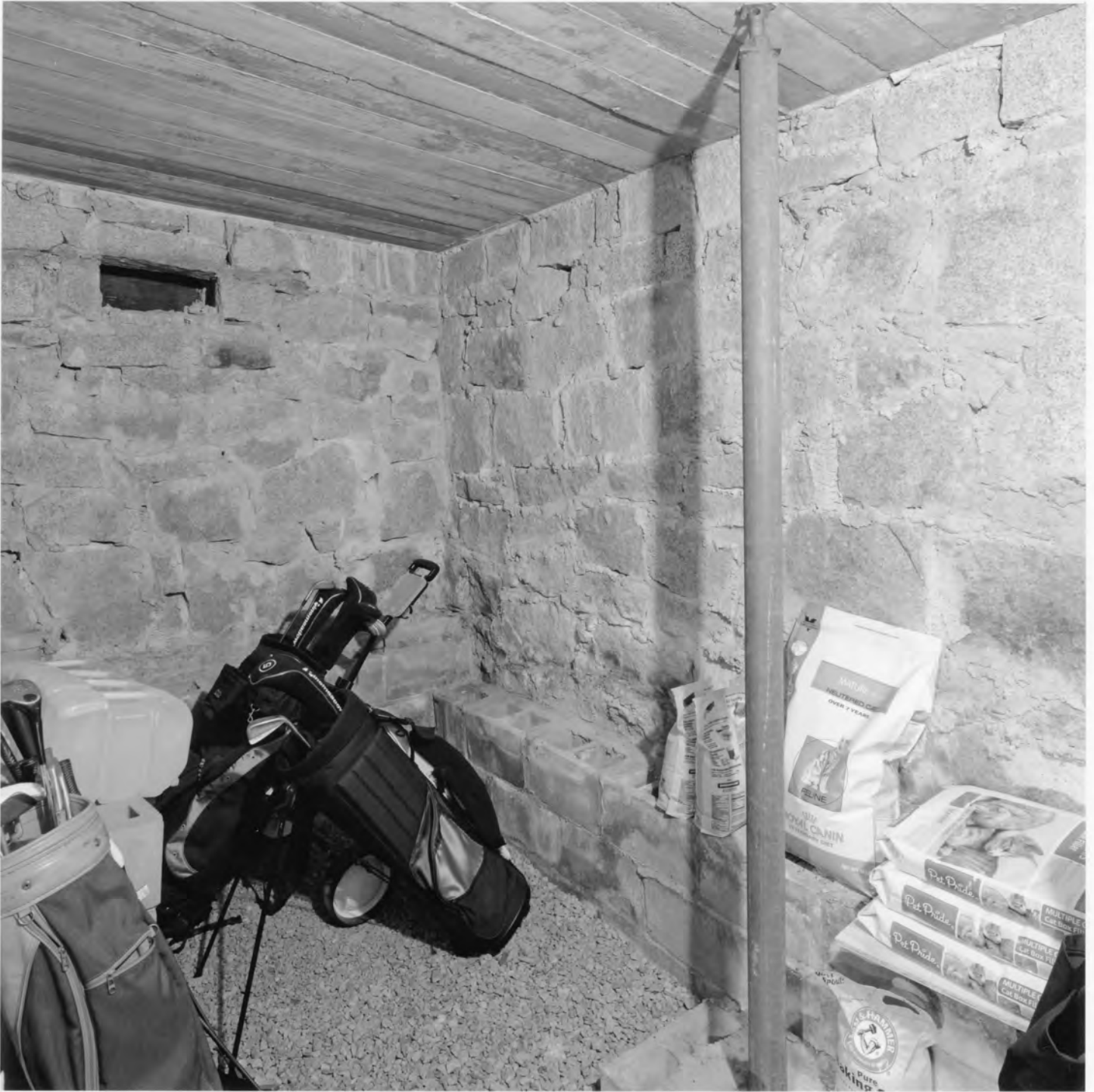
Zattau, Dr. Charles and Louise, House
Baldwin County, Georgia
Photograph 13 of 17



Zattau, Dr. Charles and Louise, House
Baldwin County, Georgia
Photograph 14 of 17



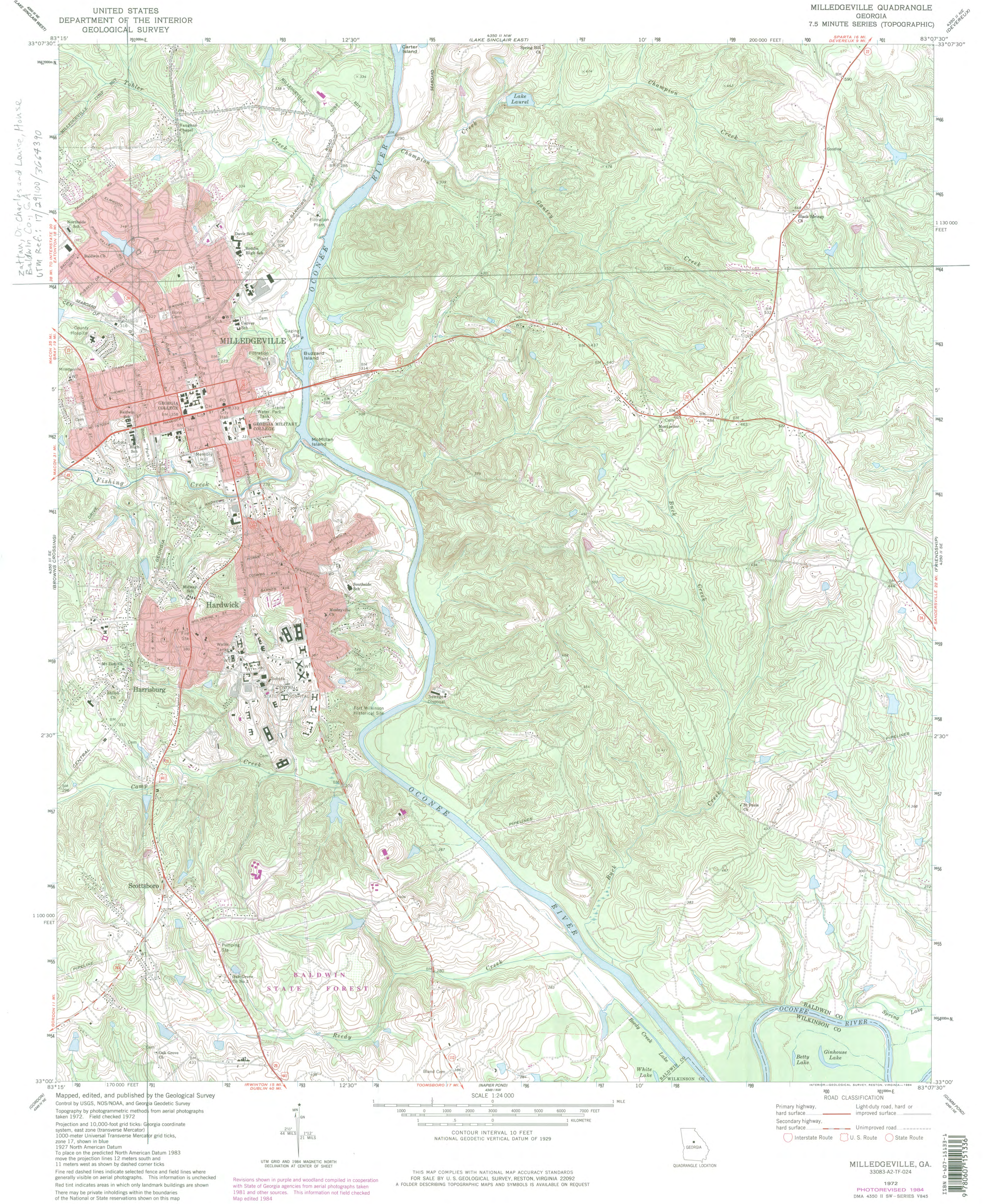
Zattau, Dr. Charles and Louise, House
Baldwin County, Georgia
Photograph 15 of 17



Zattau, Dr. Charles and Louise, House
Baldwin County, Georgia
Photograph 16 of 17



Zattau, Dr. Charles and Louise, House
Baldwin County, Georgia
Photograph 17 of 17



Zattari, Dr. Charles and Louise, House
Baldwin Co., GA
UTM Ref.: 17/29100/3664390

UNITED STATES
DEPARTMENT OF THE INTERIOR
GEOLOGICAL SURVEY

MILLEDGEVILLE QUADRANGLE
GEORGIA
7.5 MINUTE SERIES (TOPOGRAPHIC)

Mapped, edited, and published by the Geological Survey
Control by USGS, NOS/NOAA, and Georgia Geodetic Survey
Topography by photogrammetric methods from aerial photographs
taken 1972. Field checked 1972
Projection and 10,000-foot grid ticks: Georgia coordinate
system, east zone (transverse Mercator)
1000-meter Universal Transverse Mercator grid ticks,
zone 17, shown in blue
1927 North American Datum
To place on the predicted North American Datum 1983
move the projection lines 12 meters south and
11 meters west as shown by dashed corner ticks
Fine red dashed lines indicate selected fence and field lines where
generally visible on aerial photographs. This information is unchecked
Red tint indicates areas in which only landmark buildings are shown
There may be private inholdings within the boundaries
of the National or State reservations shown on this map

Revisions shown in purple and woodland compiled in cooperation
with State of Georgia agencies from aerial photographs taken
1981 and other sources. This information not field checked
Map edited 1984

THIS MAP COMPLIES WITH NATIONAL MAP ACCURACY STANDARDS
FOR SALE BY U. S. GEOLOGICAL SURVEY, RESTON, VIRGINIA 22092
A FOLDER DESCRIBING TOPOGRAPHIC MAPS AND SYMBOLS IS AVAILABLE ON REQUEST

- ROAD CLASSIFICATION
- | | |
|------------------------------------|--|
| Primary highway,
hard surface | Light-duty road, hard or
improved surface |
| Secondary highway,
hard surface | Unimproved road |
| Interstate Route | U. S. Route |
| | State Route |

MILLEDGEVILLE, GA.
33083-A2-TF-024
1972
PHOTOREVISED 1984
DMA 4350 II SW - SERIES V845





HISTORIC PRESERVATION DIVISION

MARK WILLIAMS
COMMISSIONER

DR. DAVID CRASS
DIVISION DIRECTOR

May 4, 2012

J. Paul Loether
National Park Service
National Register of Historic Places
1201 "I" (Eye) Street, N.W. 8th floor
Washington, D.C. 20005



Dear Mr. Loether:

Please find enclosed the following materials for your consideration submitted on this 4th day of May 2012, for the nomination of the **Dr. Charles and Louise Zattau House, Baldwin County, Georgia** to the National Register of Historic Places.

- ☒ Original National Register of Historic Places nomination form
- ☒ DVD with electronic images
- ☒ Photographs
- ☒ Original USGS topographic map(s)
- ☒ Sketch map(s)/attachment(s)
- ☐ Correspondence
- ☐ Other:

COMMENTS:

- ☐ Please insure that this nomination is reviewed
- ☐ This property has been certified under 36 CFR 67
- ☐ The enclosed owner objection(s) do ☐ do not ☐ constitute a majority of property owners.
- ☒ Special considerations: The property owners would like to have the nomination listed in time for their 50th wedding anniversary celebration at the house on July 21, 2012, if at all possible. Thank you.

Sincerely,

Gretchen Brock
National Register & Survey Program Manager

Enclosure