



85A-253

Thetford Hill Historic District
Thetford, Vermont
Credit: Lisa Mausolf
Date: June 1985
Negative filed at Vermont Division
for Historic Preservation
Description: View of church (#2)
and Common (#37)
View looking northwest.

Photograph 1



Thetford Hill Historic District
Thetford, Vermont

Credit: Lisa Mausolf

Date: June 1985

Negative filed at Vermont Division
for Historic Preservation

Description: Thetford Hill School
(#1)

View looking northwest.

Photograph 2

85-A-253



85-A-252

Thetford Hill Historic District

Thetford, Vermont

Credit: Lisa Mausolf

Date: June 1985

Negative filed at Vermont Division
for Historic Preservation

Description: First Congregational
Church (#2)

View looking northwest.

Photograph 3



85-A-253

Thetford Hill Historic District
Thetford, Vermont
Credit: Lisa Mausolf
Date: June 1985
Negative filed at Vermont Division
for Historic Preservation
Description: James White House (#3)

View looking north.

Photograph 4



85-A-253

Thetford Hill Historic District
Thetford, Vermont
Credit: Lisa Mausolf
Date: June 1985
Negative filed at Vermont Division
for Historic Preservation
Description: S. Y. Closson House
(#4)
View looking east.

Photograph 5



Thetford Hill Historic District
Thetford, Vermont
Credit: Lisa Mausolf
Date: June 1985
Negative filed at Vermont Division
for Historic Preservation
Description: Ezra Worcester House
(#5)
View looking east.

Photograph 6

85-A-252



85-A-253

Thetford Hill Historic District
Thetford, Vermont
Credit: Lisa Mausolf
Date: June 1985
Negative filed at Vermont Division
for Historic Preservation
Description: Alanson Morey House
(#6)
View looking north.

Photograph 7



85-A-253

Thetford Hill Historic District
Thetford, Vermont
Credit: Lisa Mausolf
Date: June 1985
Negative filed at Vermont Division
for Historic Preservation
Description: Alanson Morey
property, outbuildings (#6A & 6B)
View looking north.

Photograph 8



85A-253

Thetford Hill Historic District

Thetford, Vermont

Credit: Lisa Mausolf

Date: June 1985

Negative filed at Vermont Division
for Historic Preservation

Description: Timothy Clary House
(#7)

View looking northeast.

Photograph 9



85A-253

Thetford Hill Historic District
Thetford, Vermont
Credit: Lisa Mausolf
Date: June 1985
Negative filed at Vermont Division
for Historic Preservation
Description: Hiram Coombs House
(#8)
View looking northeast.

Photograph 10



85-A-253

Thetford Hill Historic District
Thetford, Vermont

Credit: Lisa Mausolf

Date: June 1985

Negative filed at Vermont Division
for Historic Preservation

Description: Combs Barns (#8A &
#8B; #8B removed by 1988)

View looking north.

Photograph 11



85-A-253

Thetford Hill Historic District
Thetford, Vermont
Credit: Lisa Mausolf
Date: June 1985
Negative filed at Vermont Division
for Historic Preservation
Description: Coombs Barn (#9)

View looking north.

Photograph 12



85-A-253

Thetford Hill Historic District
Thetford, Vermont
Credit: Lisa Mausolf
Date: June 1985
Negative filed at Vermont Division
for Historic Preservation
Description: Coombs Barn (#9) and
outbuildings (#s9A & 9B)
View looking northeast.

Photograph 13



85-A-253

Thetford Hill Historic District
Thetford, Vermont

Credit: Lisa Mausolf

Date: June 1985

Negative filed at Vermont Division
for Historic Preservation

Description: Ranstead House (#10)

View looking south.

Photograph 14



85A-253

Thetford Hill Historic District

Thetford, Vermont

Credit: Lisa Mausolf

Date: June 1985

Negative filed at Vermont Division
for Historic Preservation

Description: Sturman House (#11)
and garage (#11A)

View looking south.

Photograph 15



85-A-253

Thetford Hill Historic District
Thetford, Vermont
Credit: Lisa Mausolf
Date: June 1985
Negative filed at Vermont Division
for Historic Preservation
Description: Vaughan House (#12)
and garage (#12B)
View looking south.

Photograph 16



85A-252

Thetford Hill Historic District
Thetford, Vermont
Credit: Lisa Mausolf
Date: June 1985
Negative filed at Vermont Division
for Historic Preservation
Description: Marsh House (#14)

View looking east.

Photograph 17



85-A-252

Thetford Hill Historic District
Thetford, Vermont
Credit: Lisa Mausolf
Date: June 1985
Negative filed at Vermont Division
for Historic Preservation
Description: Thetford Post Office
(#15)
View looking east.

Photograph 18



85-A-252

Thetford Hill Historic District

Thetford, Vermont

Credit: Lisa Mausolf

Date: June 1985

Negative filed at Vermont Division
for Historic Preservation

Description: First Congregational
Church Parsonage (#16) and garage
(#16A)

View looking east.

Photograph 19



27

85A-252

Thetford Hill Historic District
Thetford, Vermont
Credit: Lisa Mausolf
Date: June 1985
Negative filed at Vermont Division
for Historic Preservation
Description: Loomis House (#17)

View looking southeast.

Photograph 20



85-A-252

Thetford Hill Historic District
Thetford, Vermont

Credit: Lisa Mausolf

Date: June 1985

Negative filed at Vermont Division
for Historic Preservation

Description: Rear of Loomis House
(#17) to left, #18 on right, #18A
on far right

View looking northeast.

Photograph 21



85A-252

Thetford Hill Historic District
Thetford, Vermont
Credit: Lisa Mausolf
Date: June 1985
Negative filed at Vermont Division
for Historic Preservation
Description: L. to R.--Loomis House
(#17), Loomis House (#18), Loomis
House (#19)
View looking northeast.

Photograph 22



ECLIPSE
GRANGE

FRESH
PLAYERS

85-A-252

Thetford Hill Historic District
Thetford, Vermont
Credit: Lisa Mausolf
Date: June 1985
Negative filed at Vermont Division
for Historic Preservation
Description: Eclipse Grange #255
Hall (#22)
View looking east.

Photograph 23



85-A-252

Thetford Hill Historic District
Thetford, Vermont
Credit: Lisa Mausolf
Date: June 1985
Negative filed at Vermont Division
for Historic Preservation
Description: Holton House (#23)

View looking east.

Photograph 24



85-A-252

Thetford Hill Historic District
Thetford, Vermont
Credit: Lisa Mausolf
Date: June 1985
Negative filed at Vermont Division
for Historic Preservation
Description: Turner House (#25)

View looking northeast.

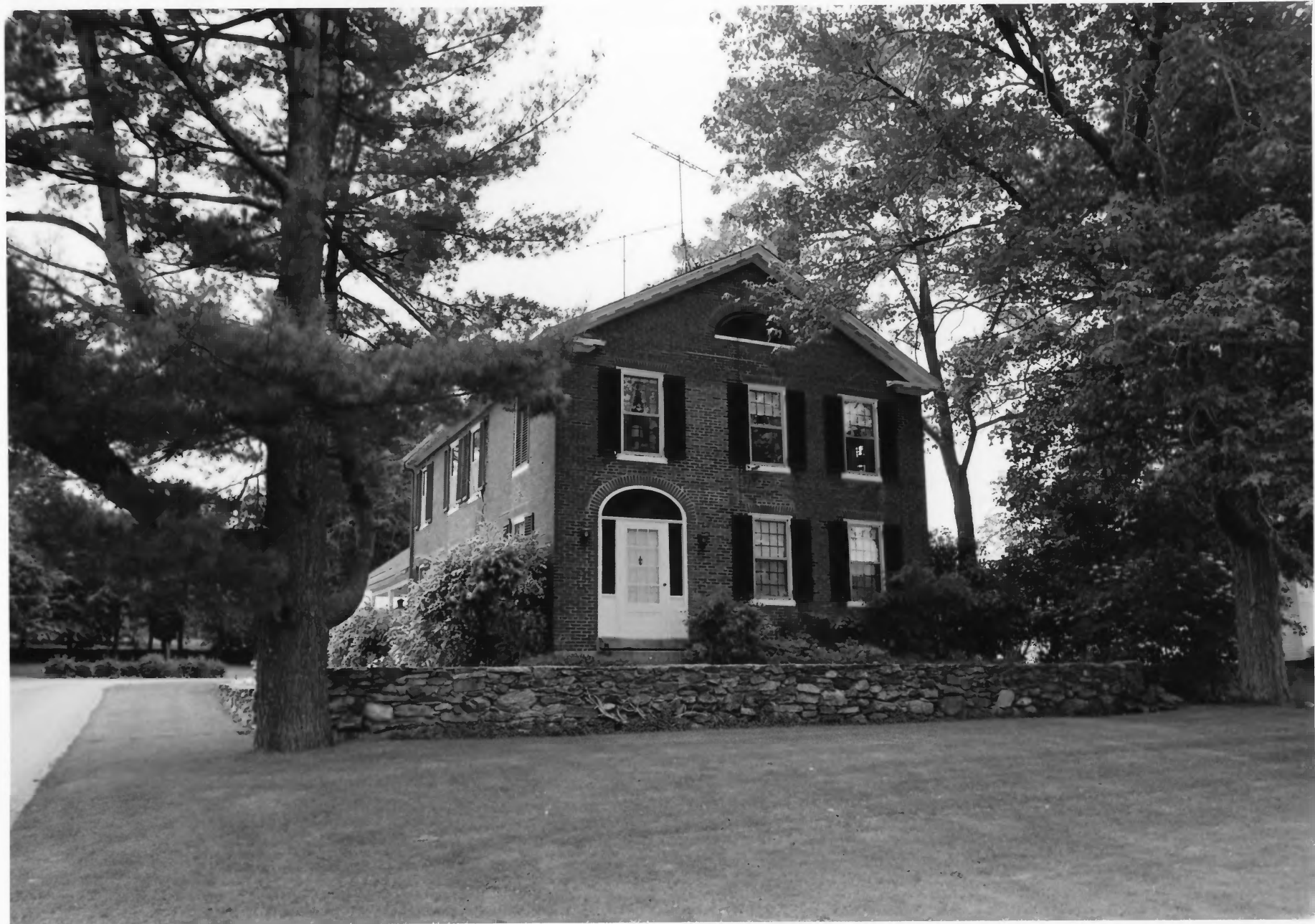
Photograph 25



Thetford Hill Historic District
Thetford, Vermont
Credit: Lisa Mausolf
Date: June 1985
Negative filed at Vermont Division
for Historic Preservation
Description: Thetford Hill Academy
(#26)
View looking southwest.

Photograph 26

85-A-254



85-A-252

Thetford Hill Historic District
Thetford, Vermont
Credit: Lisa Mausolf
Date: June 1985
Negative filed at Vermont Division
for Historic Preservation
Description: Hosford House (#27)

View looking northwest.

Photograph 27



85-A-254

Thetford Hill Historic District
Thetford, Vermont
Credit: Lisa Mausolf
Date: June 1985
Negative filed at Vermont Division
for Historic Preservation
Description: Hosford outbuildings
(#s27A and 27B)
View looking west.

Photograph 28



85-A-254

Thetford Hill Historic District
Thetford, Vermont
Credit: Lisa Mausolf
Date: June 1985
Negative filed at Vermont Division
for Historic Preservation
Description: Turner House (#28)

View looking southwest.

Photograph 29



85-A-254

Thetford Hill Historic District
Thetford, Vermont
Credit: Lisa Mausolf
Date: June 1985
Negative filed at Vermont Division
for Historic Preservation
Description: Turner House (#29)

View looking west.

Photograph 30



85A-254

Thetford Hill Historic District
Thetford, Vermont

Credit: Lisa Mausolf

Date: June 1985

Negative filed at Vermont Division
for Historic Preservation

Description: Slafter Hall (#30) and
outbuilding (#30A)

View looking northwest.

Photograph 31

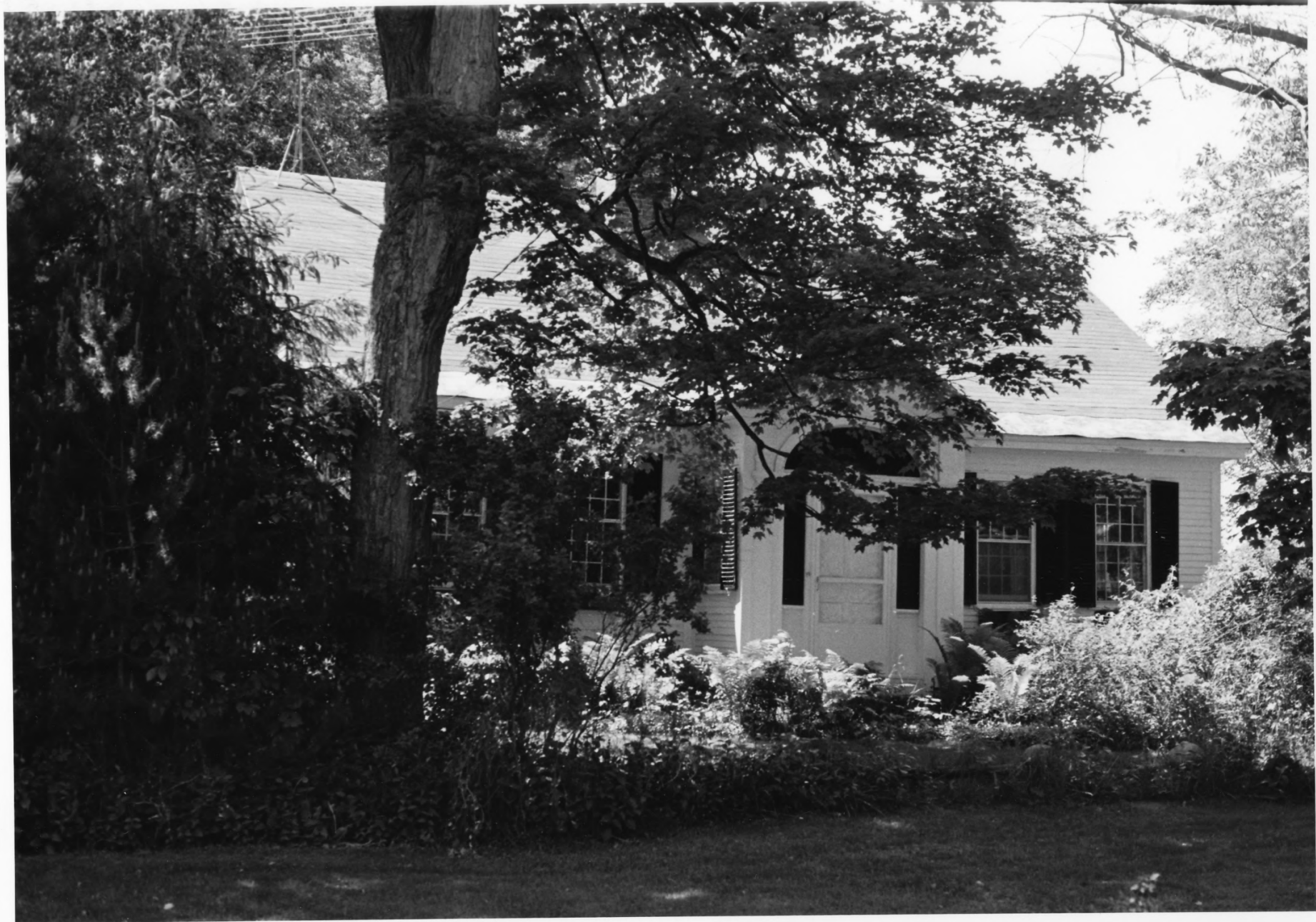


85A-254

Thetford Hill Historic District
Thetford, Vermont
Credit: Lisa Mausolf
Date: June 1985
Negative filed at Vermont Division
for Historic Preservation
Description: Goddard Hall (#31)

View looking southwest.

Photograph 32



85A-254

Thetford Hill Historic District
Thetford, Vermont
Credit: Lisa Mausolf
Date: June 1985
Negative filed at Vermont Division
for Historic Preservation
Description: Watson House (#32)

View looking west.

Photograph 33



85-A-254

Thetford Hill Historic District
Thetford, Vermont
Credit: Lisa Mausolf
Date: June 1985
Negative filed at Vermont Division
for Historic Preservation
Description: Latham-Kendrick Houses
(#33)
View looking southwest.

Photograph 34



85-A-254

Thetford Hill Historic District
Thetford, Vermont
Credit: Lisa Mausolf
Date: June 1985
Negative filed at Vermont Division
for Historic Preservation
Description: Former Latham Library
(#34)
View looking west.

Photograph 35



85A-254

Thetford Hill Historic District
Thetford, Vermont
Credit: Lisa Mausolf
Date: June 1985
Negative filed at Vermont Division
for Historic Preservation
Description: White-Fowle House
(#35)
View looking west.

Photograph 36