

United States Department of the Interior
National Park Service

National Register of Historic Places
Continuation Sheet

Name of Property
County and State
Name of multiple listing (if applicable)

Section number ____ Page ____

Supplementary Listing Record

NRIS Reference Number: MP100004403

Date Listed: 09/19/2019

Property Name: Canyon Resort Airways Beacon

County: Beaverhead

State: MT

This Property is listed in the National Register of Historic Places in accordance with the attached nomination documentation subject to the following exceptions, exclusions, or amendments, notwithstanding the National Park Service certification included in the nomination documentation


Signature of the Keeper

9/19/2019
Date of Action

=====
Amended Items in Nomination:

Bibliographic References:

Under *Previous Documentation on File* the box for *previously determined eligible by the National Register* should not be checked. [There is no record of a Keeper/NPS determination of eligibility for the property; it was likely a state or consensus determination. These reference blocks only refer to NPS actions.]

The MONTANA SHPO and BLM FPO were notified of this amendment.

DISTRIBUTION:

- National Register property file
- Nominating Authority (without nomination attachment)

United States Department of the Interior
National Park Service

4403

National Register of Historic Places Registration Form

This form is for use in nominating or requesting determinations for individual properties and districts. See instructions in National Register Bulletin, *How to Complete the National Register of Historic Places Registration Form*. If any item does not apply to the property being documented, enter "N/A" for "not applicable." For functions, architectural classification, materials, and areas of significance, enter only categories and subcategories from the instructions.



1. Name of Property

Historic name: Canyon Resort Airway Beacon
Other names/site number: Pipe Organ Beacon/ Beacon Hill Beacon/24BE2437
Name of related multiple property listing:
Sentinels of the Airways: Montana's Airway Beacon System, 1934-1979
(Enter "N/A" if property is not part of a multiple property listing)

2. Location

Street & number: Above Pipe Organ Rock, 15 miles south of Dillon, MT
City or town: Dillon State: MT County: Beaverhead
Not For Publication: Vicinity:

3. State/Federal Agency Certification

As the designated authority under the National Historic Preservation Act, as amended,

I hereby certify that this X nomination request for determination of eligibility meets the documentation standards for registering properties in the National Register of Historic Places and meets the procedural and professional requirements set forth in 36 CFR Part 60.

In my opinion, the property X meets does not meet the National Register Criteria. I recommend that this property be considered significant at the following level(s) of significance:

 national X statewide local

Applicable National Register Criteria:

X A B X C D

<p style="font-size: 1.2em; font-family: cursive;">Ranel Stephenson Cron</p> <p>Signature of certifying official/Title:</p> <p style="font-size: 1.2em; font-family: cursive;">Federal Preservation Officer, Bureau of Land Management</p> <p>State or Federal agency/bureau or Tribal Government</p>	<p style="font-size: 1.2em; font-family: cursive;">6 August 2019</p> <p>Date</p>
<p>In my opinion, the property <u> </u> meets <u> </u> does not meet the National Register criteria.</p> <p style="font-size: 1.2em; font-family: cursive;">Mark F. Zaunber</p> <p>Signature of commenting official:</p>	
<p style="font-size: 1.2em; font-family: cursive;">6/17/2019</p> <p>Date</p>	
<p>Title : MT State Historic Preservation Officer State or Federal agency/bureau or Tribal Government</p>	

Canyon Resort Airway Beacon

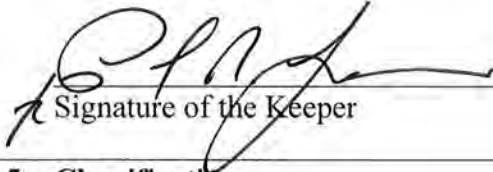
Beaverhead County,
Montana
County and State

Name of Property

4. National Park Service Certification

I hereby certify that this property is:

- entered in the National Register
- determined eligible for the National Register
- determined not eligible for the National Register
- removed from the National Register
- other (explain:)


Signature of the Keeper

9/19/2019
Date of Action

5. Classification

Ownership of Property

(Check as many boxes as apply.)

- Private:
- Public – Local
- Public – State
- Public – Federal

Category of Property

(Check only **one** box.)

- Building(s)
- District
- Site
- Structure
- Object

Canyon Resort Airway Beacon

Beaverhead County,
Montana
County and State

Name of Property

Number of Resources within Property

(Do not include previously listed resources in the count)

Contributing	Noncontributing	
_____	_____	buildings
_____	_____	sites
<u>2</u>	<u>1</u>	structures
_____	_____	objects
<u>2</u>	<u>1</u>	Total

Number of contributing resources previously listed in the National Register N/A

6. Function or Use

Historic Functions

(Enter categories from instructions.)

TRANSPORTATION/air-related=navigational aid

Current Functions

(Enter categories from instructions.)

TRANSPORTATION/air-related=navigational aid

Canyon Resort Airway Beacon

Beaverhead County,
Montana
County and State

Name of Property

7. Description

Architectural Classification

(Enter categories from instructions.)

No Style

Materials: (enter categories from instructions.)

Principal exterior materials of the property: METAL: Steel, CONCRETE

Narrative Description

(Describe the historic and current physical appearance and condition of the property. Describe contributing and noncontributing resources if applicable. Begin with a **summary paragraph** that briefly describes the general characteristics of the property, such as its location, type, style, method of construction, setting, size, and significant features. Indicate whether the property has historic integrity.)

Summary Paragraph

The Canyon Resort Airway Beacon (also referred to locally as the Pipe Organ Beacon and Beacon Hill Beacon) consists of two contributing resources and one noncontributing feature including the nighttime airway beacon tower, an historic power pole, and the modern electrical vault box that now powers the beacon. It sits above Pipe Organ Rock, a volcanic outcrop that overlooks the Beaverhead River about fifteen miles south of Dillon, the Beaverhead County seat. Erected in 1935, the beacon was part of an historic system of lighted beacons that provided guidance to aircraft pilots as they flew north and south across Montana during nighttime. The beacon stands as a component of the National Parks Airway route between Salt Lake City and Great Falls, Montana and functioned as a critical part of the National Parks Airway route in Montana. A metal platform surmounts the 90-foot steel tower and provides access to the revolving beacon at the top. Formerly powered by a gasoline-fueled generator, the beacon now derives power from a buried Northwestern Energy power line connected to an electric vault box to the northwest. The generator and fuel tank were removed from the site sometime after 1946. The beacon is accessed via a dirt road branching off Pipe Organ Road, which in turn is accessed from Interstate 90 at the Dalys Interchange (#51). The beacon is accessible by foot from the

Canyon Resort Airway Beacon

Beaverhead County,
Montana
County and State

Name of Property

terminus of the road and sits on land owned by the Bureau of Land Management and maintained and operated by the Montana Department of Transportation's Aeronautics Division. The beacon retains a very-high level of all aspects of integrity including the virtually unchanged setting since the beacon's construction in 1935.

Narrative Description

The Canyon Resort Airway Beacon sits above a volcanic outcrop, known as Pipe Organ Rock, at an elevation of 6,488 ft. It overlooks the Beaverhead River to the south. The outcrop rises a little over 1,100 ft. above the river bottom. Interstate 15 parallels and crosses the river at the base of Pipe Organ Rock about fifteen miles south of Dillon. A dirt road approaches the beacon from the northwest. The beacon stands at the top of the ridge approximately 100 ft. southeast of the road's terminus. The vantage of the Canyon Resort Airway Beacon features spectacular views of the Beaverhead and Red River valleys along with views of the Pioneer Mountains to the north and west. The property occupies less than one acre of land owned by the Bureau of Land Management on which MDT has held a Special Use Permit since 1935.¹

Canyon Resort Airway Beacon Tower (one contributing structure)

The Canyon Resort Airway Beacon consists of a 90-foot steel tower supporting an airway beacon. The tower, likely fabricated by the Pennsylvania-based Jones & Laughlin Steel Company, is comprised of angle sections bolted at the connections. Select pieces of angle iron bear the Weirton Steel mark, and one connector displays the Carnegie (steel manufacturers) mark.² The tower measures 16 ft. 3 in. square at the base with each corner resting on a buried concrete footing. The tower tapers to 4 ft. square at its top and supports a steel platform. A narrow steel ladder with safety cage attaches to the west elevation of the tower and extends to the platform where the beacon is situated; a steel cable ascends vertically with the ladder. An opening on the platform's west side provides access to the platform at the top of the ladder. A steel angle section railing, approximately 4 ft. in height, encloses the 6-ft.-square expanded metal grate platform. An angle iron lightning rod projects from the northeast corner of the platform.

The revolving beacon sits atop a steel pedestal that houses the wiring. A Lexan dome that replaced the original glass dome, encloses the beacon. The Montana Aeronautics Division upgraded the beacon with a pulse start lamp kit in 2011. One each 500-watt light located on the north and south sides of the platform face outward, corresponding with the air route's directionality.

¹ File. Canyon Resort Airway Beacon. Aeronautics Division. Montana Department of Transportation. Helena, MT.

² Weirton Steel was based in Weirton, West Virginia and operated from 1909 to 2005. The Carnegie Steel Company was based in Pennsylvania and operated from 1892 to the 1980s.

Canyon Resort Airway Beacon

Beaverhead County,
Montana
County and State

Name of Property

A small electrical circuit box situated on the east side of the tower platform attaches to the interior safety railing. A larger circuit box (measuring 28 in. x 40½ in. x 8 in.) attaches at head level to the interior of the east tower leg near the tower's southeast corner.

The main generator, backup generator, fuel tank, and generator shed originally associated with the beacon have been removed. A few 2x4s, three 1x8s, and a few other lengths of 1x lumber lie scattered near the west edge of the top of the knoll and may represent the remains of a warming shed; these are not included in the resource count.

Power pole (one contributing structure)

Sometime after WWII, electricity was delivered to the beacon from a distribution line along former US Highway 91 (current Interstate Highway 15 frontage road). Some of the historic poles, likely original, remain and ascend a steep slope that leads to the beacon. The historic poles exhibit various stages of decay, having been abandoned at an undetermined date. One of these poles stands 100 ft. southeast of the beacon tower, on the level area of the knoll, and is included as a contributing resource of the property. The pole stands approximately 20 feet tall and is supported by a 3 1/2-ft. tall cut pole. It features dual crossarms and aqua glass insulators.

Electronic Vault Box (one noncontributing structure)

An electrical vault box that now provides power to the beacon stands slightly downslope and just over 200 ft. northwest of the tower. The vault box is protected by a pole enclosure that measures about 10 ft. square at the base, stands three rails high, featuring bolts to fasten the elements. Both the vault box and a non-metered electrical panel sit inside the enclosure, the latter near the center of the south wall. Visible conduit bears a 2003 date. From this electrical vault box, the line continues in buried conduit to the tower.

Integrity

The Canyon Resort Airway Beacon retains a high level of integrity. The beacon tower stands at its original location and the isolation of the property provides for a strong sense of integrity of feeling, setting, and association. The beacon tower stands virtually as when constructed and much of the original equipment of the tower continues in use; its routine maintenance ensures its continuing operation. Its relationship to the Dell and Homestake beacons also continues. The beacon tower displays the effects of its siting in a completely exposed location. Despite the tell-tale signs of temperature extremes, periods of heavy snow, and strong winds, it continues to demonstrate sound integrity of workmanship, design, and materials. There have been no significant changes to the tower and beacon since its installation in late 1935.

Although the main generator, backup generator, fuel tank, and generator shed originally associated with the beacon have been removed, their loss does not compromise the significance of the property as their loss represents the introduction of newer technology to power the beacon, part of the evolution of the property.

Canyon Resort Airway Beacon

Beaverhead County,
Montana
County and State

Name of Property

8. Statement of Significance

Applicable National Register Criteria

(Mark "x" in one or more boxes for the criteria qualifying the property for National Register listing.)

- A. Property is associated with events that have made a significant contribution to the broad patterns of our history.
- B. Property is associated with the lives of persons significant in our past.
- C. Property embodies the distinctive characteristics of a type, period, or method of construction or represents the work of a master, or possesses high artistic values, or represents a significant and distinguishable entity whose components lack individual distinction.
- D. Property has yielded, or is likely to yield, information important in prehistory or history.

Criteria Considerations

(Mark "x" in all the boxes that apply.)

- A. Owned by a religious institution or used for religious purposes
- B. Removed from its original location
- C. A birthplace or grave
- D. A cemetery
- E. A reconstructed building, object, or structure
- F. A commemorative property
- G. Less than 50 years old or achieving significance within the past 50 years

Canyon Resort Airway Beacon

Beaverhead County,
Montana
County and State

Name of Property

Areas of Significance

(Enter categories from instructions.)

TRANSPORTATION
ENGINEERING

Period of Significance

1935-1979

Significant Dates

1935, 1979

Significant Person

(Complete only if Criterion B is marked above.)

Cultural Affiliation

Architect/Builder

U.S. Dept. of Commerce's Bureau of Air Commerce
Art Hadfield, US Bureau of Air Commerce/ builder

Canyon Resort Airway Beacon

Beaverhead County,
Montana
County and State

Name of Property

Statement of Significance Summary Paragraph (Provide a summary paragraph that includes level of significance, applicable criteria, justification for the period of significance, and any applicable criteria considerations.)

The Canyon Resort Airway Beacon is eligible for listing in the National Register of Historic Places under Criterion A for its role in Montana's aviation history, particularly the safe navigation of aircraft across western Montana since 1935. The property is also eligible for listing under Criterion C as representative of the specific technology available at the time of its construction allowing for nighttime navigation. The airway beacon represents one of a small number of airway beacons still functioning in Montana and the United States.

The Period of Significance starts when the beacon began operation in 1935. In 1965, the Federal Aviation Administration (FAA), the successor to the CAA, began review of the utility of the 39 beacons it operated in Montana. After its review, the FAA retained eight beacons. Twelve others were soon to transfer out of Federal control to the Montana Aeronautics Commission. In January 1966, Charles Lynch, Director of the Montana Aeronautics Commission, commenced the Montana Beacon System, with the Aeronautics board deciding which 12 beacons would be selected for continuous operation.³ Those twelve beacons, which included the Canyon Resort Airway Beacon, plus the St. Regis beacon relit in 1967, constituted the Montana Beacon System.⁴ The end of the period of significance, 1979, corresponds to the year the Montana Department of Transportation's (MDT) Aeronautics Division assumed responsibility for the final eight beacons previously under FAA-control, fully incorporating them into the Montana Beacon System.

The Canyon Resort Airway Beacon meets the Registration Requirements set forth in the *Sentinels of the Airways: Montana's Airway Beacon System, 1934-1979 Multiple Property Document* under the context *Airway Beacons in Montana, 1934-1979*, and the *Montana's Airway Beacons* property type. The period of significance identified for this property extends from its construction in 1935 through 1979, when the federal government formally turned over operation of the remaining eight beacons under their control in Montana to the Montana Aeronautics Commission; it conforms to the MPD cover context period.

Criterion Consideration G

The MPS cover document justifies an extension of the period up to 1979 to recognize a significant point in the operation and management of the airway beacon system. The period

³ Brenda J. Spivey, "Airway Beacons, an Integral Part of Montana's Night VFR Navigational History: Past History, Present Service and Present Value," (Master's Thesis, Embry Riddle Aeronautical University, 1995), pp. 10-11.

⁴ Two beacons at Bozeman Pass and Boulder Hill, were decommissioned in 1982.

Canyon Resort Airway Beacon

Beaverhead County,
Montana

Name of Property

County and State

extends only briefly into the less than 50-year period and represents a logical termination point for the historic period.

Narrative Statement of Significance (Provide at least **one** paragraph for each area of significance.)

The Canyon Resort Airway Beacon is eligible for listing in the National Register of Historic Places under Criterion A as a significant component of an historic air travel corridor in western Montana. The beacon and its associated resources detail the federal development of the country's airway transportation corridors from 1935 to 1938. Between 1926 and 1938, the U.S. Department of Commerce's Bureau of Air Commerce created 18,000 miles of airway corridors in the United States and installed 1,550 airway beacons marking the corridors for night flying. The establishment of the airway corridors signaled a profound event in the evolution of the nation's air transportation system, allowing nighttime commercial and airmail flight across the United States. The Canyon Resort beacon served as an important component of the federally-designated National Parks Airway route.

The US Department of Commerce established the National Parks Airway in 1928. The airway provided a designated air mail and passenger route from Salt Lake City northward to Great Falls, Montana.⁵

The Canyon Resort Airway Beacon also demonstrates significance under Criterion C as a rare operating example of the airway beacons designed and built by the federal government from the mid-1920s to the mid-1930s. The FAA decommissioned most of the national airway beacon system in the 1960s due to obsolescence. Montana, however, retained many of its beacons, with most remaining operational until 2017. The beacon found at Canyon Resort represents the standard federal airway beacon design utilized between 1925 and 1938. The beacon tower remains intact with no changes to its design. Although replaced in 2011 with an updated lamp, the beacon light surmounting the top of the tower continues to function in its historic capacity; no changes occurred to the course lights on the tower.⁶

Canyon Resort Airway Beacon

The Canyon Resort Airway Beacon was part of National Parks Airway (NPA) route. Pilot and entrepreneur Al Frank established the airmail and passenger carrier in Salt Lake City in February 1928. The airline began service to Montana in May 1928 over an airway route that stretched from Salt Lake City to Helena. Indeed, the National Parks Airway was Montana's first

⁵ The number of airway beacons in the United States peaked in 1937 at 22,319. Correspondence, Mike Rogan, Montana Aeronautics Division, September 3, 2013.

⁶ E-mail communication with Mike Rogan, Montana Aeronautics Division, November 27, 2013.

Canyon Resort Airway Beacon

Beaverhead County,
Montana

Name of Property

County and State

designated airway, eventually connecting Great Falls to Salt Lake City, via Monida Pass, Dillon, Butte, and Helena. The US Department of Commerce's Air Branch officially designated the National Parks Airway in 1930. The airline was based in Salt Lake City and provided the only north-south connections in Montana.⁷

The Bureau of Air Commerce completed and activated a lighted airway route from Salt Lake City to Monida Pass on the Montana-Idaho border by late 1934. Shortly after the completion of the airway to the border, the bureau began its initial surveys, by air, for the sites of ten more beacons between the community of Dell and the Helena Municipal Airport. The bureau's final ground survey of the chosen sites wasn't completed until late September 1935; work on the installation of the towers began in early October. The project also included improvements and lighting of two intermediate airfields between Dell and Butte. True to the overall concept of the airway route, each beacon was fifteen miles apart with the airfields in between also lighted. Work crews had installed three of the ten beacons by the first week of November. Work was slower in Beaverhead County with the bureau not expecting to complete the project until the winter of 1936. Despite that, the Air Commerce work crews, under the supervision of Art Hadfield, completed installation of the beacons between Butte and Helena by late December 1935. An Air Commerce work crew installed the Canyon Resort airway beacon in late November 1935. The *Dillon Tribune* reported that the "beacon for guiding small planes at night, recently placed on a high point of rock near the Canyon Resort, can be seen for many miles, both to the north and the south, when lighted."⁸

⁷ "National Parks Airways begins 8th Year Service," *The Deseret News*, August 1, 1935; "National Parks to Have Beacons from This City to Dell," *The Helena Independent*, September 26, 1935; "Will Use Five Planes on New Airmail Line," *The Billings Gazette*, February 29, 1928; Frank W. Wiley, *Montana and the Sky: Beginning of Aviation in the Land of Shining Mountains*, (Helena: Montana Aeronautics Commission, 1966), 277, 279.

⁸ "National Parks to Have Beacons from This City to Dell," *The Helena Independent*, September 26, 1935; "Additional Beacons are Now Installed," *The Helena Independent*, November 3, 1935; "Officials Seek Air Beacon Sites," *The Montana Standard*, March 18, 1935; "Installation of Beacon Lights on Dell to Helena Airway Route," *The Montana Standard*, September 25, 1935; "Lights on Dell to Helena Airway Route to Start Soon," *The Montana Standard*, September 25, 1935; "Lights Installed on Airway Line," *The Montana Standard*, November 5, 1935; "Plan to Complete Route of Beacons in Winter Season," *The Montana Standard*, November 12, 1935; "Air Beacons to Mark Valley Route," *The Dillon Tribune*, November 14, 1935; "Air Beacon Installed," *The Dillon Tribune*, December 19, 1935.

Canyon Resort Airway Beacon

Beaverhead County,
Montana
County and State

Name of Property

9. Major Bibliographical References

Bibliography (Cite the books, articles, and other sources used in preparing this form.)

“Additional Beacons are Now Installed.” *The Helena Independent*, November 3, 1935.

“Air Beacon Installed.” *The Dillon Tribune*, December 19, 1935.

“Air Beacons to Mark Valley Route.” *The Dillon Tribune*, November 14, 1935.

File. Canyon Resort Airway Beacon. Aeronautics Division. Montana Department of Transportation. Helena, MT.

“First Night Airmail Trip Made from Butte to Helena.” *The Montana Standard*, December 21, 1935.

Installation of Beacon Lights on Dell to Helena Airway Route.” *The Montana Standard*, September 25, 1935.

“Lights Installed on Airway Line.” *The Montana Standard*, November 5, 1935.

“Lights on Dell to Helena Airway Route Starts Soon.” *The Montana Standard*, September 25, 1935.

“National Parks Airways begins 8th Year Service.” *The Deseret News*, 1 August 1935.

“National Parks to Have Beacons from This City to Dell.” *The Helena Independent*, September 26, 1935.

“Officials Seek Air Beacon Sites.” *The Montana Standard*, March 18, 1935.

“Plan to Complete Route of Beacons in Winter Season.” *The Montana Standard*, November 12, 1935.

Spivey, Brenda J. “Airway Beacons, an Integral Part of Montana’s Night VFR Navigational History: Past History, Present Service and Present Value.” Master’s Thesis, Embry Riddle Aeronautical University, 1995.

Wiley, Frank W. *Montana and the Sky: Beginning of Aviation in the Land of Shining Mountains*. Helena: Montana Aeronautics Commission, 1966.

“Will Use Five Planes on New Airmail Line.” *The Billings Gazette*, February 29, 1928.

Canyon Resort Airway Beacon

Beaverhead County,
Montana
County and State

Name of Property

Previous documentation on file (NPS):

- preliminary determination of individual listing (36 CFR 67) has been requested
 previously listed in the National Register
 previously determined eligible by the National Register
 designated a National Historic Landmark
 recorded by Historic American Buildings Survey # _____
 recorded by Historic American Engineering Record # _____
 recorded by Historic American Landscape Survey # _____

Primary location of additional data:

- State Historic Preservation Office
 Other State agency
 Federal agency
 Local government
 University
 Other
Name of repository: Montana Department of Transportation

Historic Resources Survey Number (if assigned): _____

10. Geographical Data

Acreage of Property less than 1.0

Use either the UTM system or latitude/longitude coordinates

Latitude/Longitude Coordinates

Datum if other than WGS84: _____
(enter coordinates to 6 decimal places)

1. Latitude: 45.07010 Longitude: -112.81079

Verbal Boundary Description (Describe the boundaries of the property.)

The Canyon Resort Airway Beacon stands in Beaverhead County, Montana at lat. 45.07010, long. -112.81079 (NW¼ NE¼ of Section 10, T9S, R10W). The beacon site measures 25 ft. x 350 ft. encompassing the beacon tower, a power pole, and a noncontributing electrical vault box. The beacon is situated above Pipe Organ Rock, a landform that dominates the local view shed. The beacon occupies a one-acre parcel on Bureau of Land Management land. The site includes all the features associated with the operation of the beacon from 1935 to 2019.

Canyon Resort Airway Beacon

Beaverhead County,
Montana
County and State

Name of Property

Boundary Justification (Explain why the boundaries were selected.)

The beacon site occupies less than one acre and includes the historic beacon tower, a nearby historic power pole, and a noncontributing electrical vault box.

11. Form Prepared By

name/title: Jon Axline/Historian
organization: Montana Department of Transportation
street & number: 2701 Prospect Avenue
city or town: Helena state: MT zip code: 59620
e-mail jaxline@mt.gov
telephone: (406) 444-6258
date: January 28, 2018

Property Owner:

(Complete this item at the request of the SHPO or FPO.)

name Bureau of Land Management
street & number 1005 Selway Drive telephone (406) 683-8029
city or town Dillon state MT zip code 59725

Additional Documentation

Submit the following items with the completed form:

- **Maps:** A **USGS map** or equivalent (7.5 or 15 minute series) indicating the property's location.
Sketch map for historic districts and properties having large acreage or numerous resources. Key all photographs to this map.
- **Additional items:** (Check with the SHPO, TPO, or FPO for any additional items.)

Photographs

Submit clear and descriptive photographs. The size of each image must be 1600x1200 pixels (minimum), 3000x2000 preferred, at 300 ppi (pixels per inch) or larger. Each photograph must be numbered and that number must correspond to the photograph number on the photo log. For simplicity, the name of the photographer, photo date, etc. may be listed once on the photograph log and doesn't need to be labeled on every photograph.

Photo Log, All Photographs:

Name of Property: Canyon Resort Airway Beacon
City or Vicinity: Dillon vicinity
County: Beaverhead State: MT
Photographer: Mitzi Rossillon
Date Photographed: October 2018

Please See Continuation Sheets

Canyon Resort Airway Beacon

Beaverhead County,
Montana
County and State

Name of Property

Paperwork Reduction Act Statement: This information is being collected for applications to the National Register of Historic Places to nominate properties for listing or determine eligibility for listing, to list properties, and to amend existing listings. Response to this request is required to obtain a benefit in accordance with the National Historic Preservation Act, as amended (16 U.S.C.460 et seq.).

Estimated Burden Statement: Public reporting burden for this form is estimated to average 100 hours per response including time for reviewing instructions, gathering and maintaining data, and completing and reviewing the form. Direct comments regarding this burden estimate or any aspect of this form to the Office of Planning and Performance Management, U.S. Dept. of the Interior, 1849 C. Street, NW, Washington, DC.

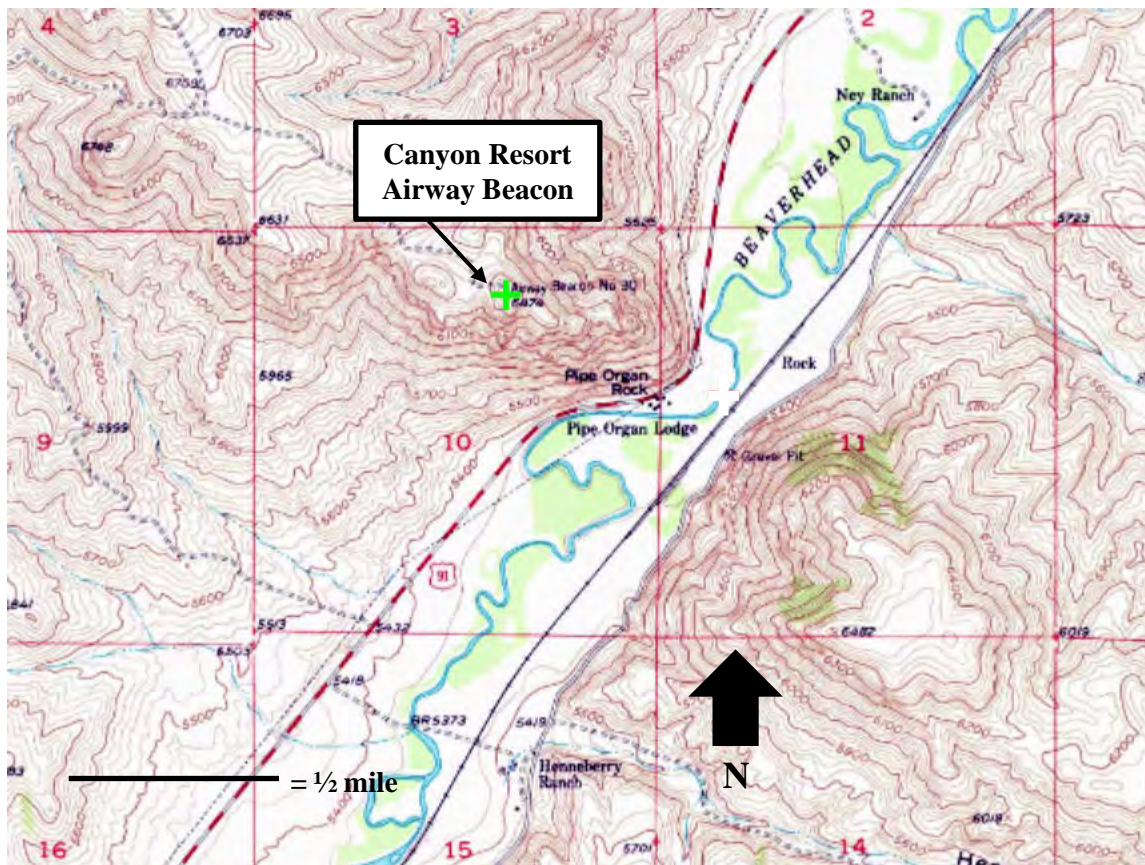
United States Department of the Interior
National Park Service

National Register of Historic Places Continuation Sheet

Canyon Resort Airway Beacon
Name of Property
Beaverhead County, MT
County and State
Sentinels of the Airways: Montana's Airway Beacon System, 1934-1979
Name of multiple listing (if applicable)

Section number Additional Documentation--Maps

Page 16



Location of Canyon Resort Airway Beacon. Found on the Dalys, Montana, 7.5 ' topographic map, 1952.

United States Department of the Interior
National Park Service

**National Register of Historic Places
Continuation Sheet**

Canyon Resort Airway Beacon
----- Name of Property
Beaverhead County, MT
----- County and State
Sentinels of the Airways: Montana's Airway Beacon System, 1934-1979
----- Name of multiple listing (if applicable)

Section number Additional Documentation--Maps

Page 17



Google Earth aerial photograph showing the Canyon Resort Airway Beacon.

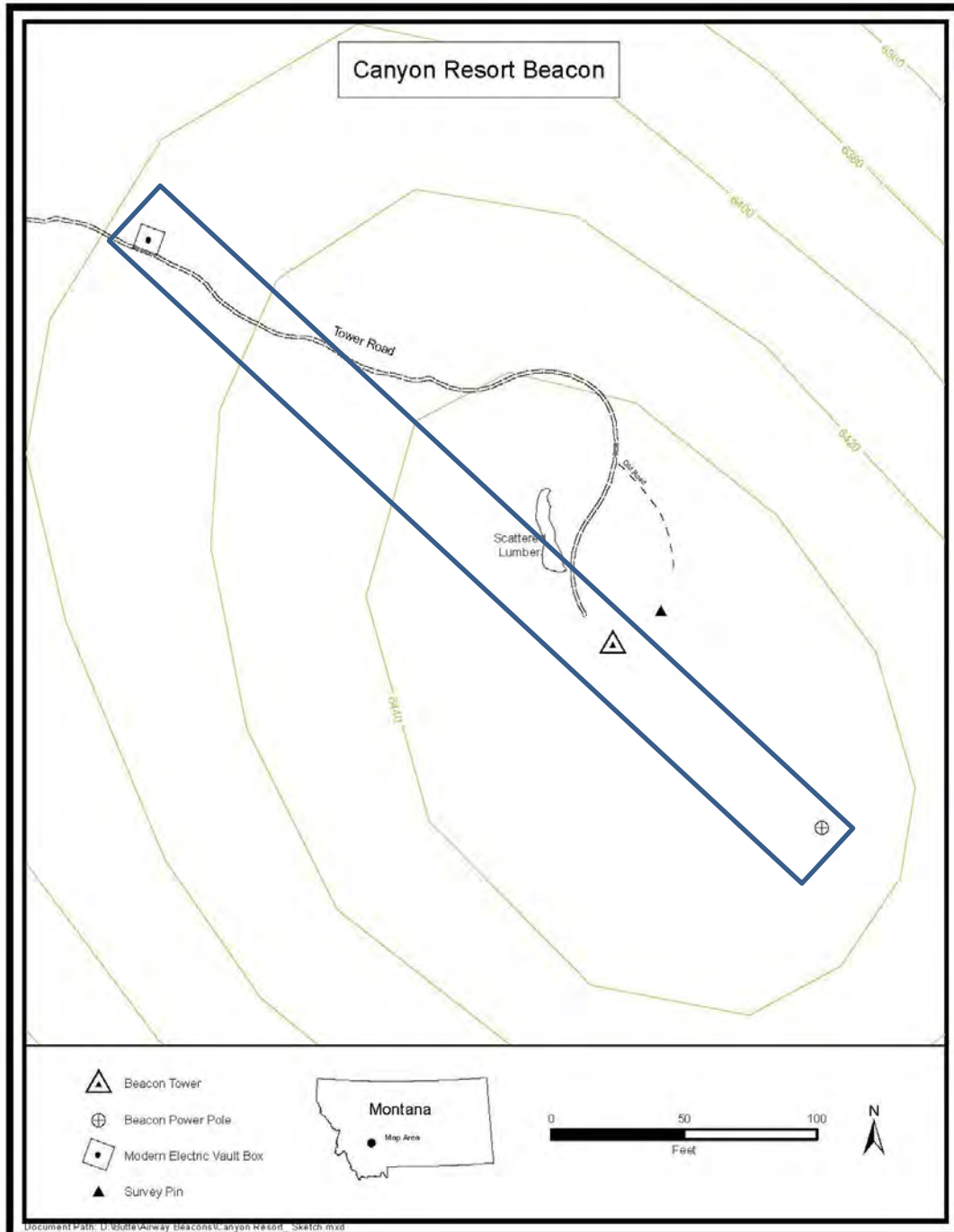
United States Department of the Interior
National Park Service

National Register of Historic Places Continuation Sheet

Canyon Resort Airway Beacon
Name of Property
Beaverhead County, MT
County and State
Sentinels of the Airways: Montana's
Airway Beacon System, 1934-1979
Name of multiple listing (if applicable)

Section number Additional Documentation--Maps

Page 18



Site map of Canyon Resort Airway Beacon.

United States Department of the Interior
National Park Service

National Register of Historic Places Continuation Sheet

Canyon Resort Airway Beacon

Name of Property

Beaverhead County, MT

County and State

Sentinels of the Airways: Montana's

Airway Beacon System, 1934-1979

Name of multiple listing (if applicable)

Section number National Register Photographs

Page 19

Photo Log, All Photographs:

Name of Property: Canyon Resort Airway Beacon
City or Vicinity: Dillon vicinity
County: Beaverhead State: MT
Photographer: Mitzi Rossillon
Date Photographed: October 2018



MT_BeaverheadCounty_CanyonResortAirwayBeacon_0001: Overview of Pipe Organ Rock. View to the North-northeast.

United States Department of the Interior
National Park Service

National Register of Historic Places Continuation Sheet

Canyon Resort Airway Beacon

Name of Property

Beaverhead County, MT

County and State

Sentinels of the Airways: Montana's

Airway Beacon System, 1934-1979

Name of multiple listing (if applicable)

Section number National Register Photographs

Page 20



MT_BeaverheadCounty_CanyonResortAirwayBeacon_0002: View to the East.

United States Department of the Interior
National Park Service

**National Register of Historic Places
Continuation Sheet**

Canyon Resort Airway Beacon

Name of Property

Beaverhead County, MT

County and State

Sentinels of the Airways: Montana's

Airway Beacon System, 1934-1979

Name of multiple listing (if applicable)

Section number National Register Photographs

Page 21



MT_BeaverheadCounty_CanyonResortAirwayBeacon_0003: View to the East.

United States Department of the Interior
National Park Service

National Register of Historic Places Continuation Sheet

Canyon Resort Airway Beacon

Name of Property

Beaverhead County, MT

County and State

Sentinels of the Airways: Montana's

Airway Beacon System, 1934-1979

Name of multiple listing (if applicable)

Section number National Register Photographs

Page 22



MT_BeaverheadCounty_CanyonResortAirwayBeacon_0004: View to the East.

United States Department of the Interior
National Park Service

National Register of Historic Places Continuation Sheet

Canyon Resort Airway Beacon

Name of Property

Beaverhead County, MT

County and State

Sentinels of the Airways: Montana's

Airway Beacon System, 1934-1979

Name of multiple listing (if applicable)

Section number National Register Photographs

Page 23



MT_BeaverheadCounty_CanyonResortAirwayBeacon_0005: View to North-northwest.

United States Department of the Interior
National Park Service

**National Register of Historic Places
Continuation Sheet**

Canyon Resort Airway Beacon

Name of Property

Beaverhead County, MT

County and State

Sentinels of the Airways: Montana's

Airway Beacon System, 1934-1979

Name of multiple listing (if applicable)

Section number National Register Photographs

Page 24



MT_BeaverheadCounty_CanyonResortAirwayBeacon_0006. View to the North-northeast.

United States Department of the Interior
National Park Service

**National Register of Historic Places
Continuation Sheet**

Canyon Resort Airway Beacon

Name of Property

Beaverhead County, MT

County and State

Sentinels of the Airways: Montana's

Airway Beacon System, 1934-1979

Name of multiple listing (if applicable)

Section number National Register Photographs

Page 25



MT_BeaverheadCounty_CanyonResortAirwayBeacon_0007: Tower base. View to the North.

United States Department of the Interior
National Park Service

**National Register of Historic Places
Continuation Sheet**

Canyon Resort Airway Beacon

Name of Property

Beaverhead County, MT

County and State

Sentinels of the Airways: Montana's

Airway Beacon System, 1934-1979

Name of multiple listing (if applicable)

Section number National Register Photographs

Page 26



MT_BeaverheadCounty_CanyonResortAirwayBeacon_0008: Circuit box. View to the east.

United States Department of the Interior
National Park Service

**National Register of Historic Places
Continuation Sheet**

Section number National Register Photographs

Canyon Resort Airway Beacon
Name of Property
Beaverhead County, MT
County and State
Sentinels of the Airways: Montana's
Airway Beacon System, 1934-1979
Name of multiple listing (if applicable)

Page 27



MT_BeaverheadCounty_CanyonResortAirwayBeacon_0009: Power pole. View to the north.

United States Department of the Interior
National Park Service

**National Register of Historic Places
Continuation Sheet**

Section number National Register Photographs

Canyon Resort Airway Beacon
Name of Property
Beaverhead County, MT
County and State
Sentinels of the Airways: Montana's
Airway Beacon System, 1934-1979
Name of multiple listing (if applicable)

Page 28



MT_BeaverheadCounty_CanyonResortAirwayBeacon_0010: Electric Vault Box. View to the northeast.





















UNITED STATES DEPARTMENT OF THE INTERIOR
NATIONAL PARK SERVICE

NATIONAL REGISTER OF HISTORIC PLACES
EVALUATION/RETURN SHEET

Requested Action: Nomination
Property Name: Canyon Resort Airways Beacon
Multiple Name: Sentinels of the Airways: Montana's Airway Beacon System, 1934-1979 MPS
State & County: MONTANA, Beaverhead

Date Received: 8/7/2019 Date of Pending List: 8/28/2019 Date of 16th Day: 9/12/2019 Date of 45th Day: 9/23/2019 Date of Weekly List:

Reference number: MP100004403

Nominator: Federal Agency, SHPO

Reason For Review:

- | | | |
|---------------------------------------|--|--|
| <input type="checkbox"/> Appeal | <input type="checkbox"/> PDIL | <input type="checkbox"/> Text/Data Issue |
| <input type="checkbox"/> SHPO Request | <input type="checkbox"/> Landscape | <input type="checkbox"/> Photo |
| <input type="checkbox"/> Waiver | <input type="checkbox"/> National | <input type="checkbox"/> Map/Boundary |
| <input type="checkbox"/> Resubmission | <input type="checkbox"/> Mobile Resource | <input type="checkbox"/> Period |
| <input type="checkbox"/> Other | <input type="checkbox"/> TCP | <input checked="" type="checkbox"/> Less than 50 years |
| | <input type="checkbox"/> CLG | |

Accept Return Reject 9/19/2019 Date

Abstract/Summary Comments: The Canyon Resort Airways Beacon is of statewide significance and meets National Register Criteria A and C in the areas of Transportation and Engineering. Erected in 1935, the airway beacon tower represents the standard design utilized between 1924 and 1940 in the early development of the national airway beacon system. The rare extant operating tower was a significant component of Montana's historic air travel corridor facilitating nighttime commercial and airmail service. The property meets the registration requirements of the Airway Beacon MPS.

Recommendation/ Criteria: Accept NR Criteria A and C

Reviewer Paul Lusignan Discipline Historian

Telephone (202)354-2229 Date 09/19/2019

DOCUMENTATION: see attached comments : No see attached SLR : **Yes**

If a nomination is returned to the nomination authority, the nomination is no longer under consideration by the National Park Service.



United States Department of the Interior
BUREAU OF LAND MANAGEMENT
Washington, D.C. 20240
<http://www.blm.gov>



August 6, 2019

In Reply Refer to:
8110 (240)



MEMORANDUM

To: Ms. Joy Beasley
Keeper of the National Register
National Park Service
1849 C St., NW - Mail Stop 7228
Washington, DC 20240

From: Ranel Stephenson Capron
Federal Preservation Officer
Bureau of Land Management
20 M Street SE, Room 2134LM
Washington, D.C. 20003

Subject: Canyon Resort Airway Beacon, Beaverhead County, Montana

The Bureau of Land Management (BLM) submits the nomination of the **Canyon Resort Airway Beacon** from Beaverhead County, Montana, to the National Register of Historic Places under Criteria A and C at the statewide level.

The enclosed disks contain the true and correct copy of the National Register nomination for the Canyon Resort Airway Beacon for listing in the National Register of Historic Places. The registration form is attached (hard copy).

In compliance with the Centennial Act (Public Law 114-289), the Montana State Historic Preservation Office was notified of this pending nomination and they responded in the affirmative within the 45-day review period. I concur with their recommendation to nominate this property at the statewide level.

We look forward to the results of your consideration. If you have any questions, please contact me at (202) 912-7241 or rcapron@blm.gov.

Attachments

- Registration form (2 pp)
- Disk 1 – Nomination form
- Disk 2 – Photographs