



UNITED STATES DEPARTMENT OF THE INTERIOR
NATIONAL PARK SERVICE

NATIONAL REGISTER OF HISTORIC PLACES
PROPERTY PHOTOGRAPH FORM

(Type all entries - attach to or enclose with photograph)

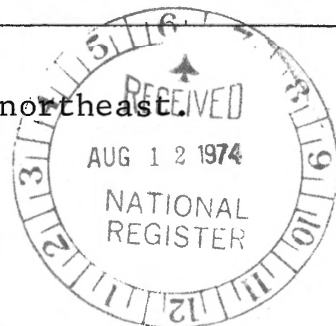
1. NAME		
COMMON	AND/OR HISTORIC	NUMERIC CODE (Assigned by NPS)
"Colonial Home Farm"	Cave Hill; Levi Prewitt House	NOV 1 1974
2. LOCATION		
STATE	COUNTY	TOWN
Kentucky	Scott	Georgetown
STREET AND NUMBER		
Bethel Pike, one mile south of Ironworks Pike near Scott-Fayette Co.		
3. PHOTO REFERENCE		
PHOTO CREDIT	DATE	NEGATIVE FILED AT
Ann Bevins	July, 1974	Rt. 4, Lexington Pike Georgetown, Kentucky

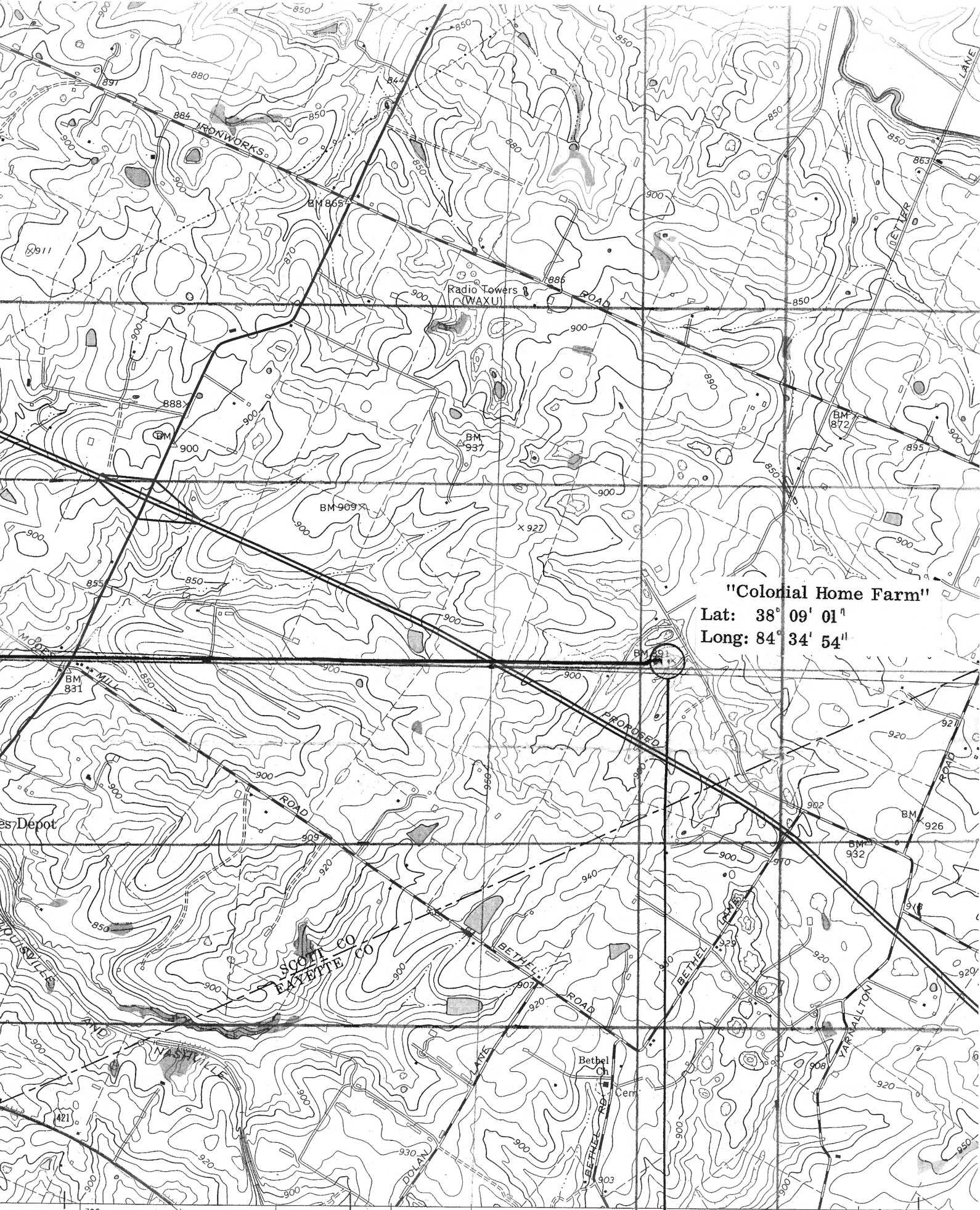
Line.

4. IDENTIFICATION

DESCRIBE VIEW, DIRECTION, ETC.

Photo showing front and side view taken from the northeast.





"Colonial Home Farm"
 Lat: 38° 09' 01"
 Long: 84° 34' 54"

BRACKTOWN 3.3 MI.
 LEXINGTON (U.S. 60) 8 MI.

712 YARNALLTON 1.7 MI.

LEXINGTON 4060

...ted, and published by the Geological Survey
 ...SGS and USC&GS
 ...y photogrammetric methods from aerial

