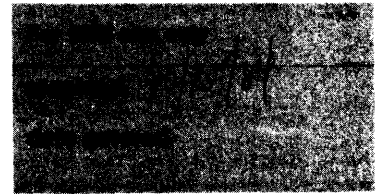


**United States Department of the Interior  
National Park Service**

**National Register of Historic Places  
Inventory—Nomination Form**



Pulaski County Multiple Resource  
Continuation sheet Area, Kentucky Item number Page

Name: Payne House (PU-3)

Location: Eubank, KY off KY  
1247

Owner: ~~Hugh Simpson~~ <sup>JAMES V. DAVIS</sup> P 7. 2.  
~~107 N. Main Street Eubank, KY.~~  
Somerset, KY 42501

Classification: Building

Description: The Payne House was built in 1914 and is a vernacular structure of asymmetrical design. The house is built in an irregular T-Plan with a hipped roof. On the east facade is a one-story frame porch with tuscan columns and Ionic terra-cotta capitals. The windows are one-over-one sash on both floors with a stained glass window in the second story of the east elevation. At the eaves is bargeboard and in the gable field is a decorative vent window. On several of the building's elevations are bay windows and gable dormer windows.

Significance: The Payne House and Mill are associated with the development and history of Eubank, Kentucky. Both the house and mill were constructed by L.E. Payne at the beginning of the 20th century. Both buildings are also located near the community center and adjacent to the railroad which stimulated the development of the community. The house and mill are significant in the history of Eubank and have remained relatively unaltered.

Acreage: Approximately one acre.

Verbal Boundary Description: The boundary for the house is defined on the north by the southern edge of a driveway, on the west by a wire and post fence, on the south by the property line which runs approximately 50' south of the house, and on the east by the western edge of Railroad Avenue.

UTM References: (Eubank Quadrangle) 16/701460/412860

KENTUCKY HISTORIC RESOURCE INVENTORY SUPPLEMENT  
BOUNDARY AND LOCATION INFORMATION

Historic Property Name Payne House Site # PU-3

Multiple Resource/Thematic Nomination Title Pulaski County Multiple resource Area

U.T.M. Coordinates - List multiple UTMs if property is ten or more acres.

A. 16 701460 412860 D. \_\_\_\_\_

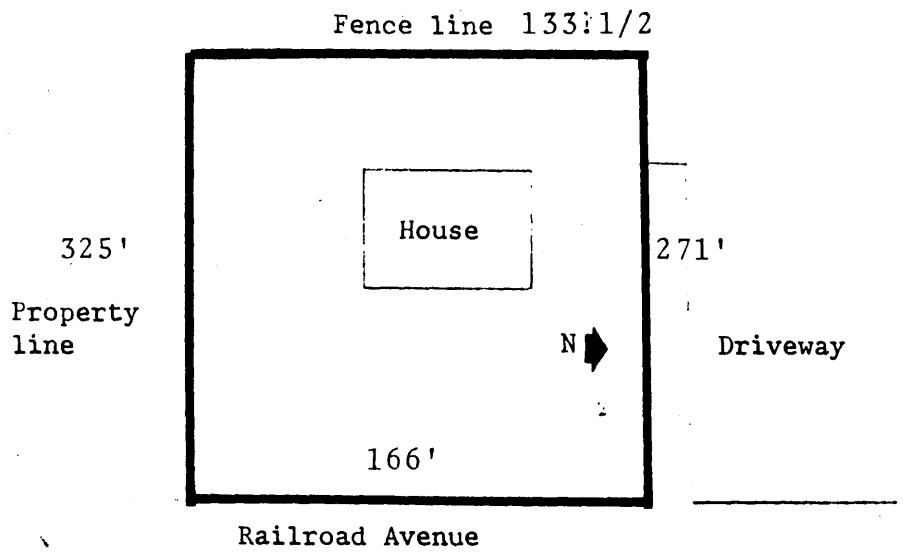
B. \_\_\_\_\_ E. \_\_\_\_\_

C. \_\_\_\_\_ F. \_\_\_\_\_

Verbal Boundary Description Acreage approx 1 acre

The boundary for the house is defined on the north by the southern edge of a driveway, on the west by a wire and post fence, on the south by the property line which runs approximately 50' south of the house, and on the east by the western edge of Railroad Avenue.

Sketch of Site Plan (Showing outbuildings, structures, landscape features and the site boundary as described above.)



Official Courthouse Property Reference: