



Clement Weaver House
125 Howland Road
East Greenwich, Rhode Island

Photographer: James Gibbs

Date: 1974

Negative: Rhode Island Historical
Preservation Commission

View west of main facade and ell.

Photo #1



Clement Weaver House
125 Howland Road
East Greenwich, Rhode Island

Photographer: Virginia A Fitch

Negative: Rhode Island Historical
Preservation Commission

View west of main facade.

Photo #2



Clement Weaver House
125 Hawland Road
East Greenwich, Rhode Island

Photographer: Virginia A. Fitch

Date: 1987

Negative: Rhode Island Historical
Preservation Commission

View southeast of north (end) and
west (rear) elevations.

Photo #3



Clement Weaver House
125 Howland Road
East Greenwich, Rhode Island

Photographer: Virginia A Fitch

Date: 1987

Negative: Rhode Island Historical
Preservation Commission

Detail view west of restored
casement window on main (east)
facade.

Photo #4



Clement Weaver House
125 Howland Road
East Greenwich, Rhode Island

Photographer: Warren Jagger

Date: November, 1980

Negative: Rhode Island Historical
Preservation Commission

View north in Great Room, entry
and stairhall at far right.
Note chamfered summer, plaster
cove above lintel.

Photo # 5

OCT 8 1987



Clement Weaver House
125 Howland Road
East Greenwich, Rhode Island

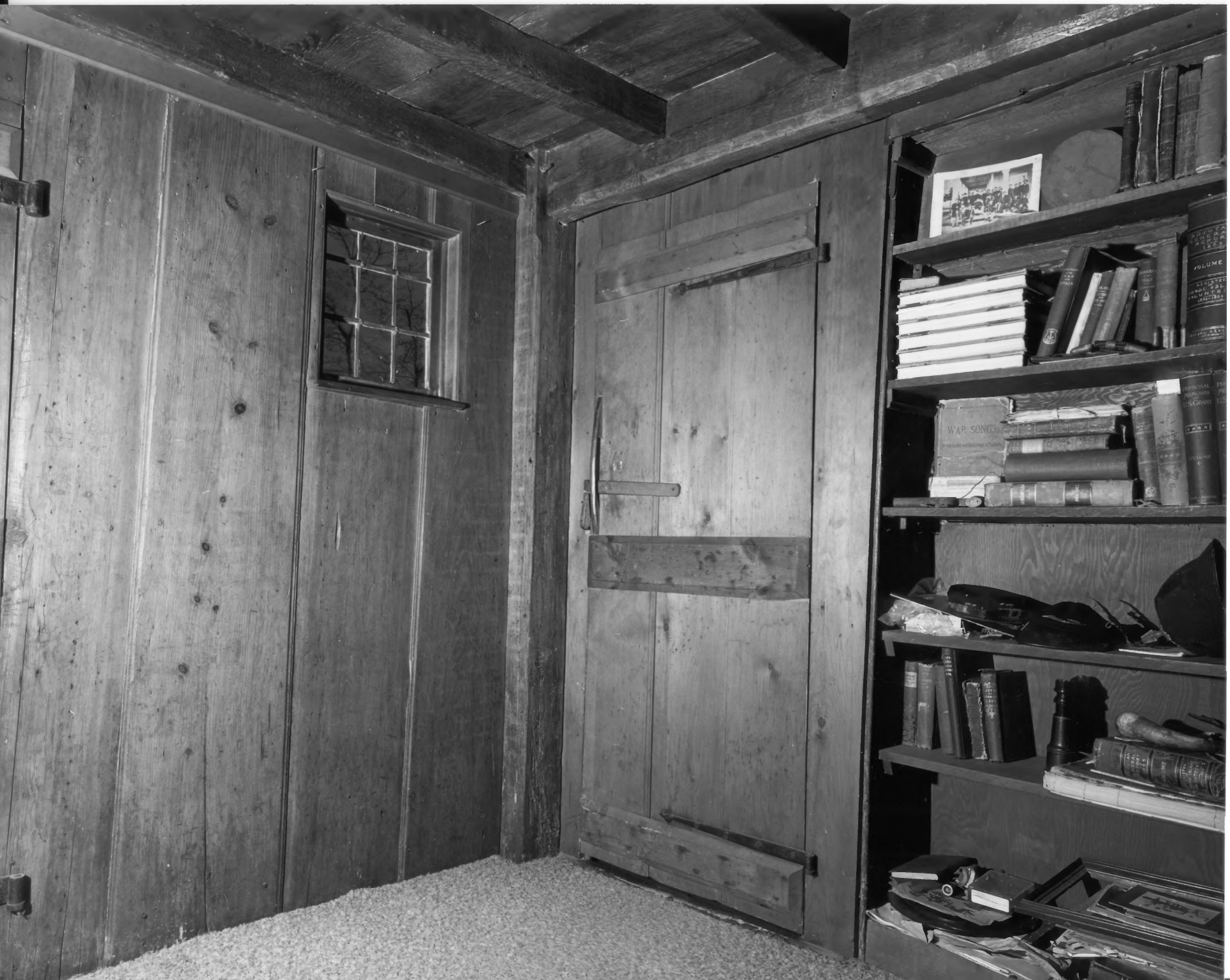
Photographer: Warren Jagger

Date: November, 1980

Negative: Rhode Island Historical
Preservation Commission

View south southwest in original
leanto converted to kitchen early on.

Photo #6



Clement Weaver House
125 Hawland Road
East Greenwich, Rhode Island

Photographer: Warren Jagger

Date: November, 1980

Negative: Rhode Island Historical
Preservation Commission

View: southeast in lean-to, later
kitchen, showing door to stairhall,
leaded window installed during
restoration by Norman Isham.

Photo #7



Clement Weaver House

125 Howland Road

East Greenwich, Rhode Island

Photographer: Warren Jagger

Date: November, 1980

Negative: Rhode Island

Historical Reservation
Commission

View east northeast in rear
first-floor bedroom.

Photo #18



Clement Weaver House
125 Howland Road
East Greenwich, Rhode Island

Photographer: Warren Jagger

Date: November, 1980

Negative: Rhode Island Historical
Preservation Commission

View south in later kitchen ell.
Lintel measures $10\frac{1}{2}$ feet in length,
fireboxes are 38 inches deep by 50 inches
and 43 inches wide, respectively.

Photo #9



Clement Weaver House
125 Hawland Road
East Greenwich, Rhode Island

Photographer: Warren Jagger

Date: November, 1990

Negative: Rhode Island Historical
Preservation Commission

View west at foot of double
staircase to garret chambers.

Sheathing has been cut from
its original floor-to-ailing
configuration.

6
6
Photo #10



Clement Weaver House
125 Howland Road
East Greenwich, Rhode Island

Photographer: Warren Jagger

Date: November, 1980

Negative: Rhode Island Historical
Preservation Commission

View north in south garret
chamber above Great Room. Note
corner post at left, stairs at right.

Photo #11