



MaMahan House  
LaGrange  
Oldham County, Kentucky  
Charlotte Schneider  
Kentucky Heritage Commission

Frankfort, Kentucky  
Summer 1980

Photo 1. View of main (north)  
facade from northeast.



MaMahan House

LaGrange

Oldham County, Kentucky

Mary Oppel

Kentucky Heritage Commission

Frankfort, Kentucky

Fall 1980

Photo 2. View of house from  
northwest.





MaMahan House  
LaGrange  
Oldham County  
Kentucky  
Charlotte Schneider

Kentucky Heritage Commission  
Frankfort, Kentucky  
Summer 1980

Photo 3. View of house from south  
showing rear elevation and ell.

Porch has been removed.



MaMahan House

LaGrange

Oldham County, Kentucky

Mary Oppel

Kentucky Heritage Commission

Frankfort, Kentucky

Fall 1980

Photo 4. Interior of second floor  
east chamber, east wall.





MaMahan House  
LaGrange  
Oldham County, Kentucky  
Mary Oppel  
Kentucky Heritage Commission

Frankfort, Kentucky  
Fall 1980

Photo 5. Federal mantle in  
first floor rear ell.



MaMahan House

LaGrange

Oldham County, Kentucky

Mary Oppel

Kentucky Heritage Commission

Frankfort, Kentucky

Fall 1980

Photo 6. Mantle in first floor  
west chamber.



MaMahan House

LaGrange

Oldham County, Kentucky

Mary Oppel

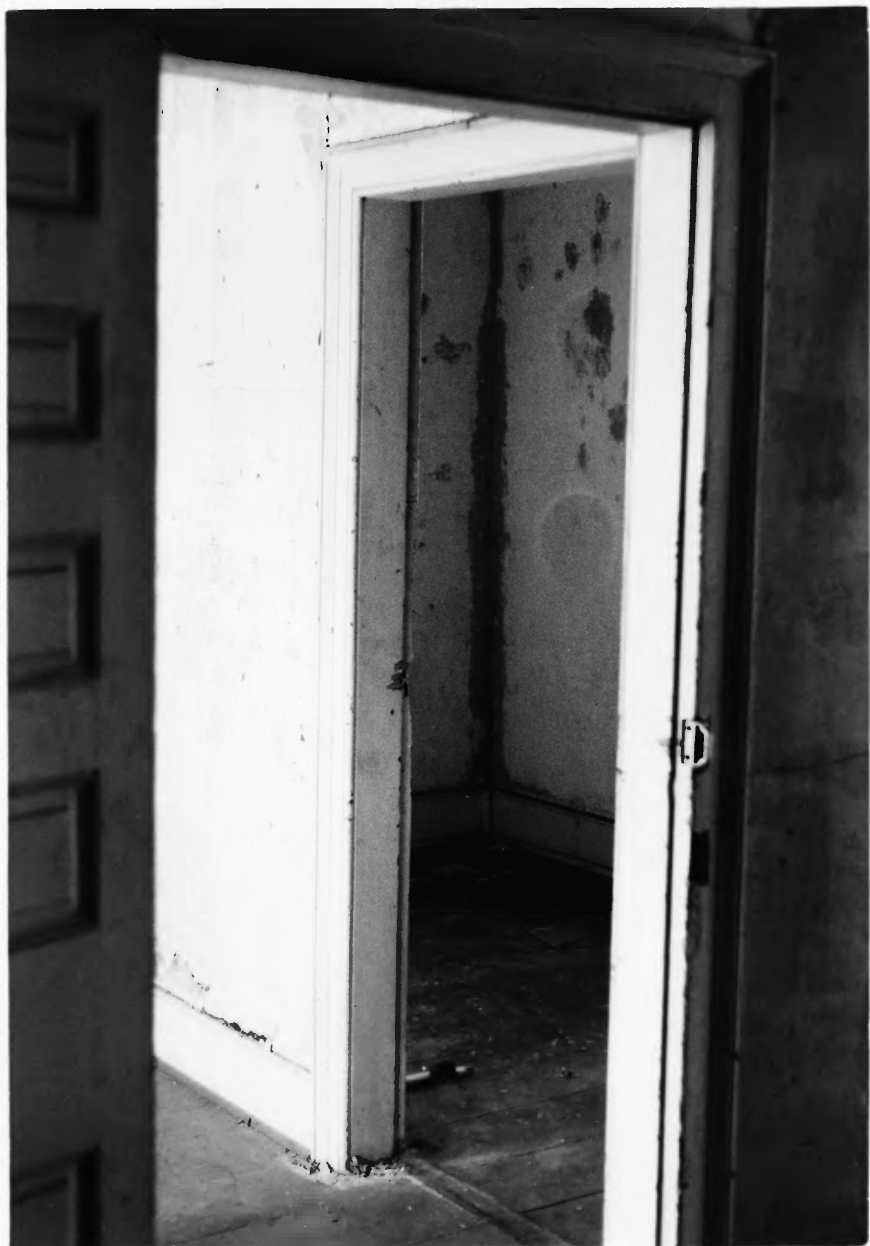
Kentucky Heritage Commission

Frankfort, Kentucky

Fall 1980

Photo 7. Federal mantle in first floor east chamber.





MaMahan House

LaGrange

Oldham County, Kentucky

Mary Oppel

Kentucky Heritage Commission

Frankfort, Kentucky

Fall 1980

Photo 3. Interior view of door moldings on second floor.



MaMahan House

LaGrange

Oldham County, Kentucky

Mary Opper

Kentucky Heritage Commission

Frankfort, Kentucky

Fall 1980

Photo 9. Detail of window  
molding.



MaMahan House

LaGrange

Oldham County, Kentucky

Mary Oppel

Kentucky Heritage Commission

Frankfort, Kentucky

Fall 1980

Photo 10. Stairway in center  
hall.





MaMahan House  
LaGrange  
Oldham County, Kentucky  
Mary Oppel  
Kentucky Heritage Commission

Frankfort, Kentucky  
Fall 1980

Photo 11. Center hall and stairs.