

**United States Department of the Interior  
National Park Service**

**National Register of Historic Places  
Continuation Sheet**

Section number \_\_\_\_\_ Page \_\_\_\_\_

---

**SUPPLEMENTARY LISTING RECORD**

NRIS Reference Number: 04001515

Date of Listing: January 19, 2005

Property Name: Hewes House

County: Iberia

State: Louisiana

none  
Multiple Name

-----  
This property is listed in the National Register of Historic Places in accordance with the attached nomination documentation subject to the following exceptions, exclusions, or amendments, notwithstanding the National Park Service certification included in the nomination documentation.

*for* *Daniel J. Vivian*  
Signature of the Keeper

January 19, 2005  
Date of Action

=====  
Amended Items in Nomination:

Section 8. Statement of Significance  
Circa 1910 is hereby removed as a significant date.

-----  
The Louisiana State Historic Preservation Office was notified of this amendment.

-----  
**DISTRIBUTION:**

- National Register property file**
- Nominating Authority (without nomination attachment)**

1515

NATIONAL REGISTER OF HISTORIC PLACES NOMINATION

NPS Form 10-900

USDI/NPS NRHP Registration Form (Rev. 8-86)

OMB No. 1024-0018

Hewes House, Jeanerette, Iberia Parish, LA

Page 1

United States Department of the Interior, National Park Service

National Register of Historic Places Registration Form

1. NAME OF PROPERTY

Historic Name: Hewes House

Other Name/Site Number:

6

2. LOCATION

Street & Number 1617 W. Main St.

Not for publication: NA

City/Town Jeanerette

Vicinity: NA

State: Louisiana Code: LA County: Iberia Code: 045

Zip Code: 70544

3. STATE/FEDERAL AGENCY CERTIFICATION

As the designated authority under the National Historic Preservation Act of 1966, as amended, I hereby certify that this X nomination request for determination of eligibility meets the documentation standards for registering properties in the National Register of Historic Places and meets the procedural and professional requirements set forth in 36 CFR Part 60. In my opinion, the property X meets does not meet the National Register Criteria.

Certifying official has considered the significance of this property in relation to other properties:

Nationally: Statewide: Locally: X

Signature of Certifying Official/Title Jonathan Fricker, Deputy SHPO, Dept of Culture, Recreation and Tourism

Date December 3, 2004

State or Federal Agency and Bureau

In my opinion, the property meets does not meet the National Register criteria.

Signature of Commenting or Other Official/Title

Date

State or Federal Agency and Bureau

NATIONAL REGISTER OF HISTORIC PLACES NOMINATION

NPS Form 10-900

USDI/NPS NRHP Registration Form (Rev. 8-86)

OMB No. 1024-0018

Hewes House, Jeanerette, Iberia Parish, LA

Page 2

United States Department of the Interior, National Park Service

National Register of Historic Places Registration Form

4. NATIONAL PARK SERVICE CERTIFICATION

I hereby certify that this property is:

- Entered in the National Register
Determined eligible for the National Register
Determined not eligible for the National Register
Removed from the National Register
Other (explain):

Daniel J. Vivian
1/19/05

Signature of Keeper

Date of Action

5. CLASSIFICATION

Ownership of Property
Private: X
Public-Local:
Public-State:
Public-Federal:

Category of Property
Building(s): 1
District:
Site:
Structure:
Object:

Number of Resources within Property

Contributing

1

Non contributing

2 buildings

sites

structures

objects

2 Total

Number of Contributing Resources Previously Listed in the National Register: 0

Name of Related Multiple Property Listing: NA

# NATIONAL REGISTER OF HISTORIC PLACES NOMINATION

NPS Form 10-900

USD/I/NPS NRHP Registration Form (Rev. 8-86)

OMB No. 1024-0018

## Hewes House, Jeanerette, Iberia Parish, LA

Page 3

United States Department of the Interior, National Park Service

National Register of Historic Places Registration Form

---

### 6. FUNCTION OR USE

Historic: domestic                      Sub: single dwelling

Current: domestic                      Sub: single dwelling

### 7. DESCRIPTION

Architectural Classification: Queen Anne Revival; Colonial Revival

Materials:

Foundation: concrete piers

Walls: weatherboard

Roof: metal

Other:

# NATIONAL REGISTER OF HISTORIC PLACES NOMINATION

NPS Form 10-900

USDI/NPS NRHP Registration Form (Rev. 8-86)

OMB No. 1024-0018

## Hewes House, Jeanerette, Iberia Parish, LA

Page 4

United States Department of the Interior, National Park Service

National Register of Historic Places Registration Form

### Describe Present and Historic Physical Appearance.

The Hewes House is a large, rambling, two-and-a-half story, wood frame residence located on Main Street north of the central business district of the small town of Jeanerette. Built c.1895 in the Queen Anne style, the house received some exterior modifications c.1910. Most notably, the original Eastlake gallery was replaced with a Colonial Revival gallery. In 1959 the house was sold to a fuel corporation which moved it back on the property about a half-block to make way for a gasoline station fronting directly on Main Street. Fortunately, the gas station has been removed and the area between the house and Main Street is now grassy. Both the lot on which the house stands and the parcel of land fronting onto Main Street are now the property of the Jeanerette Landmark Society. Exterior changes to the house since the c.1910 remodeling have been confined almost entirely to the rear.

The Hewes House's Queen Anne features are its massing and shingled treatment in the gables. Various cross gables project from a hip roof which culminates in a sharp point. Polygonal bays are found on the façade and principal side elevation. A squared-off bay is found on the secondary side elevation. Gables feature alternating bands of square and scalloped shingles. Additional texture is provided by pilasters with molded tops which define corners of the projecting bays.

The house's overall layout consists of a main block with a fairly short rear ell wing. The ell has one main room. The main block is anchored by a wide central hall with two rooms on the south side, and on the north side, a staircase with a room behind. A similar plan exists on the second story. There is a partial finished third story – a large room underneath the peak of the hip roof.

A very early photo (see attached) survives to show the house's original Eastlake gallery and a small balcony at a second floor corner. The fairly elaborate shed roof gallery began at the front polygonal bay and turned the corner to extend down a small section of the side elevation. It had a small gable marking the entrance. The gallery was completely removed c.1910, and a new longer shed roof gallery installed. The new gallery spans the entire front elevation and wraps around both corners. It has widely spaced Roman Doric columns that are fairly large in proportion. The Eastlake balcony at a second story corner on the façade was removed to create a sleeping porch with paired windows. One also suspects that the second floor addition just to the left of the façade gable dates to the same remodeling. (This corner is not visible in the early photo.) Finally, the front dormer does not appear in the early photo. Its paired windows with a simulated diamond pattern in the upper sashes would be typical of the 1910s or '20s. Interestingly, the dormer has decorative work in the gable peak identical to that originally found on the house. Perhaps this was reworked/reused from the gallery's small gable. Decorative work original to the house (and in the original place) is found in the peaks of three gables (one on the façade and two on the principal side elevation). Additionally, Eastlake brackets and other period details mark the corners of the two polygonal bays (at the bottom edge of the gables).

The rear porch configuration (along the side of the ell and across the back of the house) has been reworked considerably. It is here and on a small inset (and intact) porch at the corner of the ell that some of the house's original Eastlake gallery survives, including turned columns, brackets, and a distinctive cutout balustrade. Some of the rear reworking is historic. For example, it seems clear that sleeping porches upstairs and down were formed from previously open porches. (The openings from the dining room into the sleeping porch were clearly windows originally. The pulleys partially survive.)

Windows for the most part are one-over-one sash. The wide windows on the polygonal bays feature

# NATIONAL REGISTER OF HISTORIC PLACES NOMINATION

NPS Form 10-900

USDI/NPS NRHP Registration Form (Rev. 8-86)

OMB No. 1024-0018

## Hewes House, Jeanerette, Iberia Parish, LA

Page 5

United States Department of the Interior, National Park Service

National Register of Historic Places Registration Form

an unusual homemade-looking T-shaped glazing. The paired one-over-one windows above the entrance are original (per the early photo). (Paired windows are not typical for the turn of the twentieth century.)

The Hewes House retains the bulk of its original interior character. The most notable feature is the wide central hall (wide enough to be a living hall) with its strongly articulated staircase which ascends to the second floor in two flights and a landing. The balusters are turned and the newel post is paneled. Large panels of wood (now painted in a contrasting white) are on the underside of the second flight, the sides of the first flight (arranged in a pattern of two rectangles and a square), and on the side wall of a small room under the stair. The door to this room is quite visually prominent. It has a reeded surround with bull's eye cornerblocks and a door with five panels. Each panel is in turn paneled. The same door treatment is found on the adjacent opening leading to the large room behind the staircase. But here and on other openings downstairs, the surrounds feature smooth slightly convex side members. A diminutive egg and dart band ornaments the top framing member. Between the hall and front parlor and the parlor and dining room are pocket door openings, with only one set of doors surviving. The house retains two of its original three downstairs mantels. Both are Colonial Revival columnar mantels with overmantels. Throughout the lower floor is a Colonial Revival looking paneled wainscot which most likely is not original.

Interior alterations include the loss of three mantels (two upstairs and one down), the application of ceiling tiles with a diamond pattern in all spaces (although the ceilings are not lowered), the application of plywood paneling to a side wall adjacent to the staircase and in some upstairs rooms, and wooden flooring that is not original.

The only non-historic alteration to the principal elevations is the placement of narrow shutters on some windows.

### Assessment of Integrity:

As explained above, the most notable alterations to the Hewes House occurred not that long after it was constructed – probably about a generation later. And while the house would be a more notable landmark in its original appearance, it remains a landmark in the community even with the early alterations. As explained in Part 8, its landmark status rests upon its size and its Queen Anne massing.

### Non-contributing elements:

There are two fairly small plain wood frame buildings to the side of the house being counted as non-contributing elements. They are of unknown origin. They do not appear in this location on the 1926 Sanborn map for the property.

NATIONAL REGISTER OF HISTORIC PLACES NOMINATION

NPS Form 10-900

USDI/NPS NRHP Registration Form (Rev. 8-86)

OMB No. 1024-0018

Hewes House, Jeanerette, Iberia Parish, LA

Page 6

United States Department of the Interior, National Park Service

National Register of Historic Places Registration Form

8. STATEMENT OF SIGNIFICANCE

Applicable National Register Criteria: A\_\_ B\_\_ C\_X D\_\_

Criteria Considerations (Exceptions): A\_\_ B\_X C\_\_ D\_\_ E\_\_ F\_\_ G\_\_

Areas of Significance: architecture

Period(s) of Significance: c.1895

Significant Dates: c.1895, c.1910

Significant Person(s): NA

Cultural Affiliation: NA

Architect/Builder: unknown

# NATIONAL REGISTER OF HISTORIC PLACES NOMINATION

NPS Form 10-900

USDI/NPS NRHP Registration Form (Rev. 8-86)

OMB No. 1024-0018

## Hewes House, Jeanerette, Iberia Parish, LA

Page 7

United States Department of the Interior, National Park Service

National Register of Historic Places Registration Form

### State Significance of Property, and Justify Criteria, Criteria Considerations, and Areas and Periods of Significance Noted Above.

The Hewes House is of local significance as an important example of the Queen Anne taste within the community of Jeanerette. It achieves local landmark status through its size and rigorous Queen Anne massing.

Jeanerette is located on the banks of Bayou Teche in what was known as the Attakapas District at the time of the Louisiana Purchase in 1803. The region had been settled in the colonial period, and Jeanerette was a small community on the eve of the Civil War. However, the town was not chartered until 1878. It takes its name from John W. Jeanerette, who became the hamlet's first postmaster in 1830. Historically and today Jeanerette is the second largest town in Iberia Parish, said parish being created in 1868 with the much larger New Iberia as its seat.

Jeanerette's population of 698 in 1880 had more than tripled by 1910 (2,206). And even with losses over the years, this boom period can still be "read" in the building stock (mainly residences, for there has been much demolition in the commercial sector). A reinvigorated sugar industry and the harvesting of cypress in the nearby Atchafalaya Basin made this growth possible, combined with the ability to transport these materials along Bayou Teche and the railroad, the latter having arrived in 1879.

The prosperity of the 1880-1910 period is reflected today in a number of Queen Anne and transitional Queen Anne-Colonial Revival residences. Regrettably, the best examples are not located in a cohesive enough area to be able to pursue a National Register district. While a comprehensive historic building survey of Jeanerette has not been conducted, a windshield survey by the staff of the Louisiana State Historic Preservation Office revealed some 15-20 houses reflecting turn of the twentieth century architectural styles (Queen Anne and Queen Anne/Colonial Revival) out of perhaps as many as 300-400 buildings fifty years old or older.

Of the foregoing 15-20, only three are two story (or two-and-a-half), making the candidate a local landmark for its size alone. The others are rambling one and one-and-a-half story galleried houses of two types. There is the Queen Anne cottage as it is typically seen in Louisiana – a traditional galleried house to which a Queen Anne bay has been appended with an Eastlake gallery spanning the remainder of the façade (with the better examples having wraparound galleries). Secondly, there are a couple of houses that are Colonial Revival in their detailing but asymmetrical in their massing (reflecting the early Colonial Revival when it is still clothed in Queen Anne massing).

More important than size is the Hewes House's signature Queen Anne massing, which makes it one of the most important period houses in town. Of the 15-20 houses referenced above, six are in the top tier in terms of architectural quality, for either their detailing (elaborate Eastlake galleries and other trim) and/or their massing. The Hewes House exhibits some of the liveliest Queen Anne massing in Jeanerette. Various gables project from the steeply pitched main hip roof – a major façade gable marking a polygonal bay; a major polygonal bay with gable on the principal side elevation with a secondary roofline gable nearby; and a gable over a squared off projection on the other side elevation. All of the gables have fishscale shingles and trim in the gable peaks typical of the style. In terms of massing, there are only four other houses of note in Jeanerette: a two story house with fairly simple roofline massing but with a turret like projection in its one story Eastlake porch; a two story house with cross gable massing and Eastlake details; a one-and-a-half story traditional galleried house with a projecting bay and a turret-like projection in its one story Eastlake porch;



# NATIONAL REGISTER OF HISTORIC PLACES NOMINATION

NPS Form 10-900

USDI/NPS NRHP Registration Form (Rev. 8-86)

OMB No. 1024-0018

## Hewes House, Jeanerette, Iberia Parish, LA

Page 8

United States Department of the Interior, National Park Service

National Register of Historic Places Registration Form

---

and a one story house with two projections in its Eastlake porch.

### Historical Note:

The candidate takes its name from longtime owners Harry B. and Nellie Bussey Hewes, who purchased the property in 1905. It is believed that the house was pre-existing, and from an architectural standpoint, this is most likely. (It is being dated to circa 1895 for the purposes of this nomination.) Lumberman Hewes moved to Jeanerette in 1887 and married Nellie Bussey in 1889. In 1894, he co-founded the Jeanerette Lumber and Shingle Company and served as a director for the remainder of his life. Among the town's most prominent men, he had sugar interests in the area, served on the board of directors of a local bank, and contributed generously to various causes. Hewes had financial interests in the lumber industry in Texas, California, Oregon and South Carolina.

The candidate served as Hewes' residence until his death in 1953. (His wife died in 1938.) As noted elsewhere, the Arkansas Fuel Oil Corporation purchased the property in 1959, moved the house back, and placed a gas station in front. The gas station remained in place until 2000. In May 2003, the newly formed Jeanerette Landmark Society purchased the house, and in 2004 the front parcel of land (fronting onto Main Street). At present the group has the house rented as a single family dwelling.

# NATIONAL REGISTER OF HISTORIC PLACES NOMINATION

NPS Form 10-900

USDI/NPS NRHP Registration Form (Rev. 8-86)

OMB No. 1024-0018

## Hewes House, Jeanerette, Iberia Parish, LA

Page 9

United States Department of the Interior, National Park Service

National Register of Historic Places Registration Form

### 9. MAJOR BIBLIOGRAPHICAL REFERENCES

Historical background on the Hewes family provided by Jeanerette Landmark Society, copy in National Register file, Louisiana Division of Historic Preservation.

Bonin, Blair, *et al.* *Where the Bayou Runs Straight: The History of Jeanerette.* Jeanerette, LA, 1982.

Circa 1900 photo of Hewes House, copy in National Register file, Louisiana Division of Historic Preservation.

Previous documentation on file (NPS): NA

- Preliminary Determination of Individual Listing (36 CFR 67) has been requested.
- Previously Listed in the National Register. (partially)
- Previously Determined Eligible by the National Register.
- Designated a National Historic Landmark.
- Recorded by Historic American Buildings Survey: #
- Recorded by Historic American Engineering Record: #

Primary Location of Additional Data:

- State Historic Preservation Office
- Other State Agency
- Federal Agency
- Local Government
- University
- Other (Specify Repository):

### 10. GEOGRAPHICAL DATA

Acreage of Property: approx 3/4ths of an acre

UTM References:     **Zone Easting Northing**  
                          15   628400  3310420

Verbal Boundary Description: See attached property plat map. Both the parcel of land upon which the house stands and the front lot where it once stood are now owned by the Jeanerette Landmark Society. Both parcels are included in the nominated acreage.

Boundary Justification: Boundaries were chosen to include what remains of the house's original acreage, including the front lot (fronting onto Main Street) where it originally stood.

# NATIONAL REGISTER OF HISTORIC PLACES NOMINATION

NPS Form 10-900

USDI/NPS NRHP Registration Form (Rev. 8-86)

OMB No. 1024-0018

## Hewes House, Jeanerette, Iberia Parish, LA

Page 10

United States Department of the Interior, National Park Service

National Register of Historic Places Registration Form

---

### 11. FORM PREPARED BY

Name/Title: National Register staff

Address: Division of Historic Preservation, P. O. Box 44247, Baton Rouge, Louisiana 70804

Telephone: (225) 342-8160

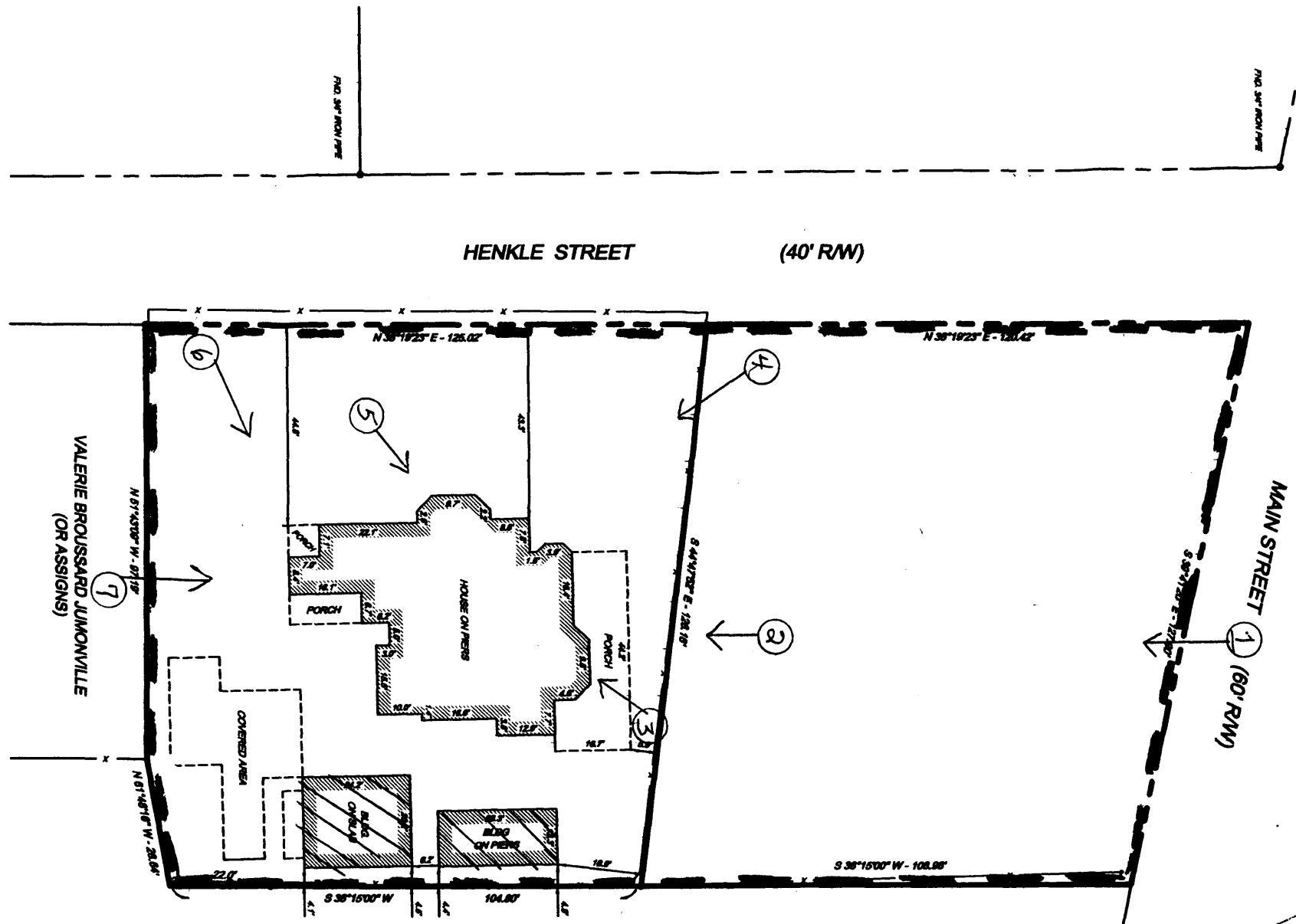
Date: August 2004

### PROPERTY OWNERS

Jeanerette Landmark Society  
P. O. Box 467  
Jeanerette, LA 70544

Heves House  
 Iberia Parish  
 Louisiana

▨ non-contributing  
 - - - BOUNDARY



REV. ARTHUR L. JONES  
 (OR ASSIGNS)

VALERIE BROUSSARD JUMONVILLE  
 (OR ASSIGNS)

F:\11-2003\JOB\11-2003-001\11-2003-001-001.DWG

