

United States Department of the Interior
National Park Service

RECEIVED

National Register of Historic Places
Registration Form

NOV 1 1988

NATIONAL
REGISTER

This form is for use in nominating or requesting determinations of eligibility for individual properties or districts. See instructions in *Guidelines for Completing National Register Forms* (National Register Bulletin 16). Complete each item by marking "x" in the appropriate box or by entering the requested information. If an item does not apply to the property being documented, enter "N/A" for "not applicable." For functions, styles, materials, and areas of significance, enter only the categories and subcategories listed in the instructions. For additional space use continuation sheets (Form 10-900a). Type all entries.

1. Name of Property

historic name Madisonville Public Library
other names/site number Hopkins County Historical Society Museum (HK-235)

2. Location

street & number 107 S. Union St. not for publication
city, town Madisonville vicinity
state Kentucky code KY county Hopkins code 107 zip code 42431

3. Classification

Ownership of Property	Category of Property	Number of Resources within Property	
<input type="checkbox"/> private	<input checked="" type="checkbox"/> building(s)	Contributing	Noncontributing
<input checked="" type="checkbox"/> public-local	<input type="checkbox"/> district	<u>1</u>	<u>0</u> buildings
<input type="checkbox"/> public-State	<input type="checkbox"/> site	<u>0</u>	<u>0</u> sites
<input type="checkbox"/> public-Federal	<input type="checkbox"/> structure	<u>0</u>	<u>0</u> structures
	<input type="checkbox"/> object	<u>0</u>	<u>0</u> objects
		<u>1</u>	<u>0</u> Total

Name of related multiple property listing:
Hopkins County Multiple Properties Listing Number of contributing resources previously listed in the National Register 0

4. State/Federal Agency Certification

As the designated authority under the National Historic Preservation Act of 1966, as amended, I hereby certify that this nomination request for determination of eligibility meets the documentation standards for registering properties in the National Register of Historic Places and meets the procedural and professional requirements set forth in 36 CFR Part 60. In my opinion, the property meets does not meet the National Register criteria. See continuation sheet.

David L. Morgan 10-26-88
Signature of certifying official David L. Morgan Date
State Historic Preservation Officer, Commonwealth of Kentucky
State or Federal agency and bureau

In my opinion, the property meets does not meet the National Register criteria. See continuation sheet.

NA
Signature of commenting or other official Date
NA
State or Federal agency and bureau

5. National Park Service Certification

I, hereby, certify that this property is:

entered in the National Register.
 See continuation sheet.

determined eligible for the National Register. See continuation sheet.

determined not eligible for the National Register.

removed from the National Register.

other, (explain:)

Albion Byrne 12/13/88
Noted in the National Register

Signature of the Keeper

Date of Action

6. Function or Use

Historic Functions (enter categories from instructions)

EDUCATION/Library

Current Functions (enter categories from instructions)

RECREATION AND CULTURE/Museum

7. Description

Architectural Classification

(enter categories from instructions)

LATE 19TH AND 20TH CENTURY REVIVALS/
Colonial Revival

Materials (enter categories from instructions)

foundation Concrete/Brickwalls Brick

roof Other: Composition shinglesother

Describe present and historic physical appearance.

The Madisonville Public Library is a two-story brick Colonial Revival design building constructed in 1926 in a rectangular plan. The building occupies an urban lot off the public square and is oriented towards S. Union Street.

On the main (east) facade the entrance has a ca. 1975 aluminum and glass door and single light sidelights. Above the door is an original frame transom bar with dentils and an elliptical transom containing a multi-light design with rectangular and circular patterns. Enclosing the arched transom is a row of brick relief arching. The entrance pavillion bay projects slightly from the main block of the building and terminates with a gable with a prominent modillion cornice. The entrance leads to interior staircases which lead to both levels. Windows on the second story are original six-over-six frame sash while those on the lower level have been enclosed. The building's hipped roof is covered in composition shingles. Along the eaves is a row of modillion blocks with gable returns. In the gable fields are arched vent windows. At the rear facade is an interior end brick chimney and a small one-story wing.

The interior retains original detailing such as its staircase with square balusters and open floor space on both floors. There are no outbuildings.

8. Statement of Significance

Certifying official has considered the significance of this property in relation to other properties:

nationally statewide locally

Applicable National Register Criteria A B C D

Criteria Considerations (Exceptions) A B C D E F G NA

Areas of Significance (enter categories from instructions)

Architecture

Period of Significance

1926

Significant Dates

1926

Cultural Affiliation

N/A

Significant Person

N/A

Architect/Builder

Fowler and Thole, Architects (Evansville IN)
Ruby Lumber Co., Builder

State significance of property, and justify criteria, criteria considerations, and areas and periods of significance noted above.

The Madisonville Public Library is a significant example of Colonial Revival public building of the early 20th century. Completed in 1926, the building has not been significantly altered and retains its original interior and exterior architectural design. The building is one of only three early 20th century public buildings remaining in Madisonville.

The public library formed in Madisonville in the late 19th century occupied rooms in various buildings for many years. In the 1920s, the need for a separate facility prompted a public subscription to raise funds for the construction of a modern library. Land on Union Street was donated by Judge John Hall and \$15,000 was provided for the building. The Ruby Lumber Company of Madisonville was awarded the contract and the building was designed by Fowler and Thole of Evansville, Indiana. The library was designed in the Colonial Revival style of the period with a classical detailing such as eave modillion blocks and an arched transom on the main facade.

The building was used as the Madisonville Public Library until 1974 when it moved to its present location on Main Street. The building has since been used as the headquarters for the Hopkins County Historical Society.

9. Major Bibliographical References

Previous documentation on file (NPS): NA

- preliminary determination of individual listing (36 CFR 67) has been requested
- previously listed in the National Register
- previously determined eligible by the National Register
- designated a National Historic Landmark
- recorded by Historic American Buildings Survey # _____
- recorded by Historic American Engineering Record # _____

See continuation sheet

Primary location of additional data:

- State historic preservation office
- Other State agency
- Federal agency
- Local government
- University
- Other

Specify repository: _____

10. Geographical Data

Acreeage of property Less than 1 acre

UTM References

A

1	6	4	5	5	8	6	5	4	1	3	1	0	9	0
Zone		Easting						Northing						

B

Zone		Easting						Northing						

C

Zone		Easting						Northing						

D

Zone		Easting						Northing						

Madisonville East Quad

See continuation sheet

Verbal Boundary Description

See continuation sheet

Boundary Justification

See continuation sheet

11. Form Prepared By

name/title Philip Thomason date 7/28/88
organization Thomason and Assoc. telephone 615-383-0227
street & number P.O. Box 121225 state TN zip code 37212
city or town Nashville

**United States Department of the Interior
National Park Service**

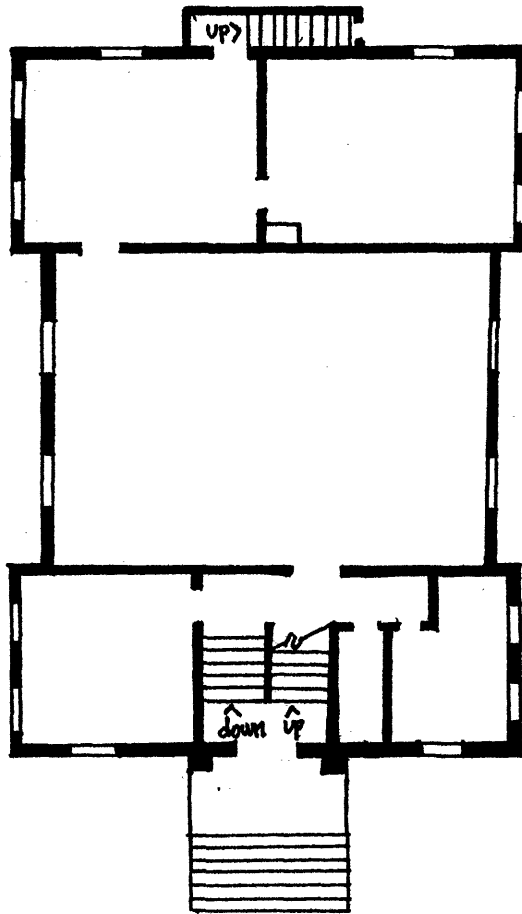
**National Register of Historic Places
Continuation Sheet**

Section number 10 Page 1 Hopkins County Multiple Properties Listing

Verbal Boundary Description: The boundary for the Madisonville Public Library is block 5, lot 8 illustrated on accompanying Hopkins County tax map 33 which is drawn at a scale of 1" = 200' and on the accompanying sketch map.

Verbal Boundary Justification: The boundary for the Madisonville Public Library includes the entire city lot that has historically been associated with the property.

HK-275. MADISONVILLE LIBRARY



N →

NOT TO SCALE



Madisonville Library (HK-235)
107 S. Union St., Madisonville
1"=200'



see M22 78 8

W. Lake

70)

McC

E.

**United States Department of the Interior
National Park Service**

**National Register of Historic Places
Continuation Sheet**

Section number Photo Key Page 1

Hopkins County Multiple Properties Listing

Photo Key

1. Madisonville Library (HK-235)
Location: 107 South Union St., Madisonville
Photos: Thomason and Associates
Neg: KY Heritage Council
Date: February 1988
View: West, of Main (east) facade.
Photo #: 1 of 3

2. Madisonville Library (HK-235)
View: Northwest, of south and east facades.
Photo #: 2 of 3

3. Madisonville Library (HK-235)
View: Northeast, of south and west facades.
Photo #: 3 of 3