



BUILDING 1 - HEADQUARTERS

NATIONAL SOLDIERS HOME HISTORIC DISTRICT

MILWAUKEE, WISCONSIN

PATRICIA A LYNCH

DECEMBER 20, 2004

SOLDIERS HOME FOUNDATION, INC

FACING EAST FROM WOLCOTT AVE IN FRONT OF

BUILDING 3, LIBRARY



OLD MAIN - DOMICILIARY  
NATIONAL SOLDIERS HOME HISTORIC DISTRICT  
MILWAUKEE, WISCONSIN

PATRICIA A LYNCH

DECEMBER 20, 2004

SOLDIERS HOME FOUNDATION OFFICE

LOOKING NORTHWEST FROM GEN. MITCHELL BLVD



WADSWORTH LIBRARY

NO  
PARKING  
HEREIN  
TOLLS

CAUTION CAUTION CAUTION CAUTION CAUTION CAUTION CAUTION CAUTION

BUILDING 3- WADSWORTH LIBRARY

NATIONAL SOLDIERS HOME HISTORIC DISTRICT  
MILWAUKEE, WISCONSIN

PATRICIA A LYNCH

DECEMBER 20, 2004

SOLDIERS HOME FOUNDATION OFFICE

FACING SOUTHEAST FROM IN FRONT OF BLDG 4  
ON WOLCOTT AVE.



RECREATION BLDG.

RECREATION  
ACTIVITIES  
SEE POSTER  
FOR TIME  
AND PLACE

RECREATION HALL - BUILDING 4

NATIONAL SOLDIERS HOME HISTORIC DISTRICT  
MILWAUKEE, WISCONSIN

PATRICIA A LYNCH

DECEMBER 20, 2004

SOLDIERS HOME FOUNDATION OFFICE

FACING SOUTH FROM WOLCOTT AVE IN FRONT  
OF BUILDING 5





BUILDING 6 - HOSPITAL

NATIONAL SOLDIERS HOME HISTORIC DISTRICT  
MILWAUKEE, WISCONSIN

PATRICIA A LYNCH

DECEMBER 20, 2004

SOLDIERS HOME FOUNDATION OFFICE

FACING WEST FROM BLDG 5, WOLCOTT AVE

6a



BUILDING 6 - HOSPITAL

NATIONAL SOLDIERS HOME HISTORIC DISTRICT

MILWAUKEE, WISCONSIN

PATRICIA A LYNCH

DECEMBER 20, 2004

SOLDIERS HOME FOUNDATION OFFICE

FACING NORTHEAST FROM PARKING LOT OFF WOLCOTT AVE

66



COMMUNITY  
BUILDING  
7

BUILDING 7 - DOMICILIARY BARRACKS  
NATIONAL SOLDIERS HOME HISTORIC DISTRICT  
MILWAUKEE, WISCONSIN

PATRICIA A LYNCH

DECEMBER 20, 2004

SOLDIERS HOME FOUNDATION, INC

FACING SOUTH FLOYD DRIVE BETWEEN BLDGS 2 + 7 OFF GEN.  
MITCHELL BLVD.





BUILDING 11 - FIREHOUSE

NATIONAL SOLDIERS HOME HISTORIC DISTRICT

MILWAUKEE, WISCONSIN

PATRICIA A LYNCH

DECEMBER 20, 2004

SOLDIERS HOME FOUNDATION OFFICE

FACING SOUTHWEST FROM GEN. MITCHELL BLVD





BUILDING 12 - CHAPEL

NATIONAL SOLDIERS HOME HISTORIC DISTRICT

MILWAUKEE, WISCONSIN

PATRICIA A LYNCH

DECEMBER 20, 2004

SOLDIERS HOME FOUNDATION OFFICE

FACING WEST FROM GEN. MITCHELL BLD.



BUILDING 17 - SURGEON ADJUTANT'S QUARTERS  
NATIONAL SOLDIERS HOME HISTORIC DISTRICT  
MILWAUKEE, WISCONSIN

PATRICIA A LYNCH

DECEMBER 20, 2004

SOLDIERS HOME FOUNDATION OFFICE

FACING NORTHWEST FROM CHAPEL



BUILDING 18 - QUARTERS

NATIONAL SOLDIERS HOME HISTORIC  
DISTRICT

MILWAUKEE, WISCONSIN

PATRICIA A LYNCH

DECEMBER 20, 2004

SOLDIERS HOME FOUNDATION OFFICE

FACING EAST FROM GEN. MITCHELL BLD.

18



BUILDING 37 - QUARTERS

NATIONAL SOLDIERS HOME HISTORIC DISTRICT

MILWAUKEE, WISCONSIN

PATRICIA A LYNCH

DECEMBER 20, 2004

SOLDIERS HOME FOUNDATION OFFICE

FACING EAST FROM BARRON CIRCLE





GOVERNOR'S RESIDENCE

NATIONAL SOLDIERS HOME HISTORIC DISTRICT

MILWAUKEE, WISCONSIN

PATRICIA A LYNCH

DEC 20, 2004

SOLDIERS HOME FOUNDATION OFFICE

FACING NORTHWEST FROM LAWN SOUTH OF BARRON CR.



WARD MEMORIAL HALL (THEATER) • NRHP  
NATIONAL SOLDIERS HOME HISTORIC DISTRICT  
MILWAUKEE, WISCONSIN

PATRICIA A LYNCH

DECEMBER 20, 2004

SOLDIERS HOME FOUNDATION OFFICE

LOOKING WEST FROM LAWN EAST OF GEN. MITCHELL BLVD.





BUILDING 43 - HOSPITAL ANNEX (DOMICILIARY)  
NATIONAL SOLDIERS HOME HISTORIC DISTRICT  
MILWAUKEE, WI

PATRICIA A LYNCH

DECEMBER 20, 2004

SOLDIERS HOME FOUNDATION OFFICE

FACING NORTHWEST FROM HINES AVE

43



POWERHOUSE AND SMOKESTACK\*\*  
NATIONAL SOLDIERS HOME HISTORIC DISTRICT  
MILWAUKEE, WISCONSIN

PATRICIA A LYNCH

DECEMBER 20, 2004

SOLDIERS HOME FOUNDATION OFFICE

FACING WEST FROM WEST ENTRANCE OF BLDG 43

\*45            XT 106

45-106





BUILDINGS 50 (LEFT) AND 49 (RIGHT)

NATIONAL SOLDIERS HOME HISTORIC DISTRICT  
MILWAUKEE, WISCONSIN

PATRICIA A LYNCH

DECEMBER 20, 2004

SOLDIERS HOME FOUNDATION, INC.

FACING NORTH FROM POWERHOUSE DRIVE

50 (LEFT) 49 (RIGHT)

50-49



POWDER MAGAZINE

NATIONAL SOLDIERS HOME HISTORIC DISTRICT  
MILWAUKEE, WISCONSIN

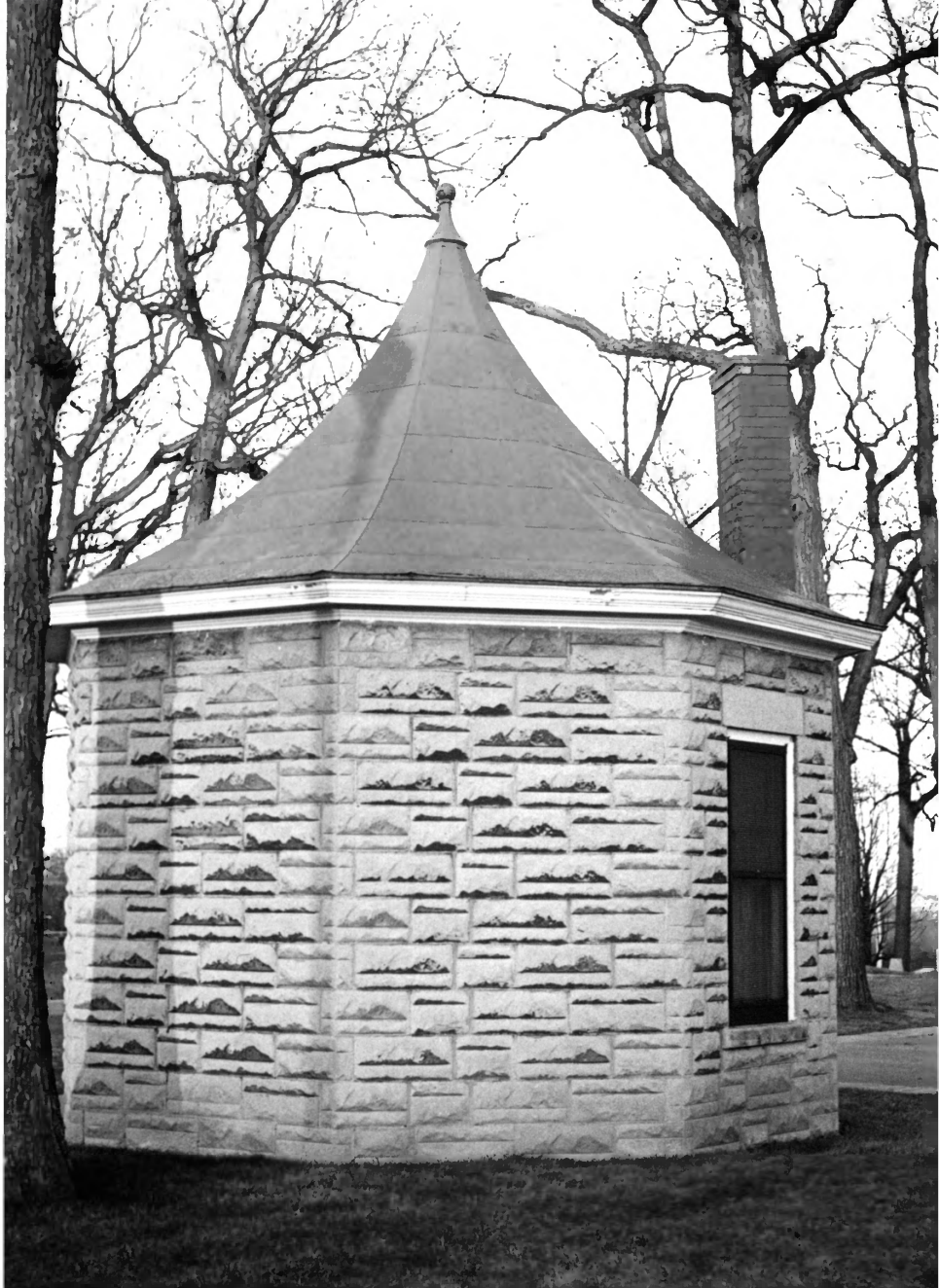
PATRICIA A LYNCH

DEC 20, 2004

SOLDIERS HOME FOUNDATION OFFICE

LOOKING NORTHEAST TOWARD MILLER PARK

53



BUILDING 57 - CEMETERY RECEPTION HOUSE  
NATIONAL SOLDIERS HOME HISTORIC DISTRICT  
MILWAUKEE, WISCONSIN

PATRICIA A LYNCH

DECEMBER 20, 2004

SOLDIERS HOME FOUNDATION OFFICE

FACING SOUTHWEST FROM WALKER DR





GARAGE (BUILDINGS 49, 50)

NATIONAL SOLDIERS HOME HISTORIC DISTRICT  
MILWAUKEE, WISCONSIN

PATRICIA A LYNCH

DECEMBER 20, 2004

SOLDIERS HOME FOUNDATION OFFICE

FACING SOUTH FROM POWER HOUSE DRIVE

84





SOLDIERS + SAILORS MONUMENT

NATIONAL SOLDIERS HOME HISTORIC DISTRICT

MILWAUKEE, WISCONSIN

PATRICIA A LYNCH

DECEMBER 20, 2001

SOLDIERS HOME FOUNDATION OFFICE

WEST FROM WALKER DR. IN FRONT OF 57

120



HIKER STATUE (SPAN AM WAR)

NATIONAL SOLDIERS HOME HISTORIC  
DISTRICT

MILWAUKEE, WISCONSIN

PATRICIA A LYNCH

DEC. 20, 2004

SOLDIERS HOME FOUNDATION OFFICE

LOOKING EAST FROM HINES AVE.

OB-1



FOUNTAIN

NATIONAL SOLDIERS HOME HISTORIC DISTRICT  
MILWAUKEE, WISCONSIN

PATRICIA A LYNCH


DECEMBER 20, 2004

SOLDIERS HOME FOUNDATION OFFICE

EAST FROM GENERAL MITCHELL BLVD

IN FRONT OF BLDG. 2

OB-2



**T**HE MUFFLED DRUM SAD ROLL HAS BEAT  
**T**HE SOLDIER'S LAST TATTOO.  
**N**O MORE ON LIFE'S PARADE SHALL MEET  
**T**HAT BRAVE AND FALLEN FEW.



BIVOUAC OF THE DEAD MARKER

NATIONAL SOLDIERS HISTORIC DISTRICT  
MILWAUKEE, WISCONSIN

PATRICIA A LYNCH

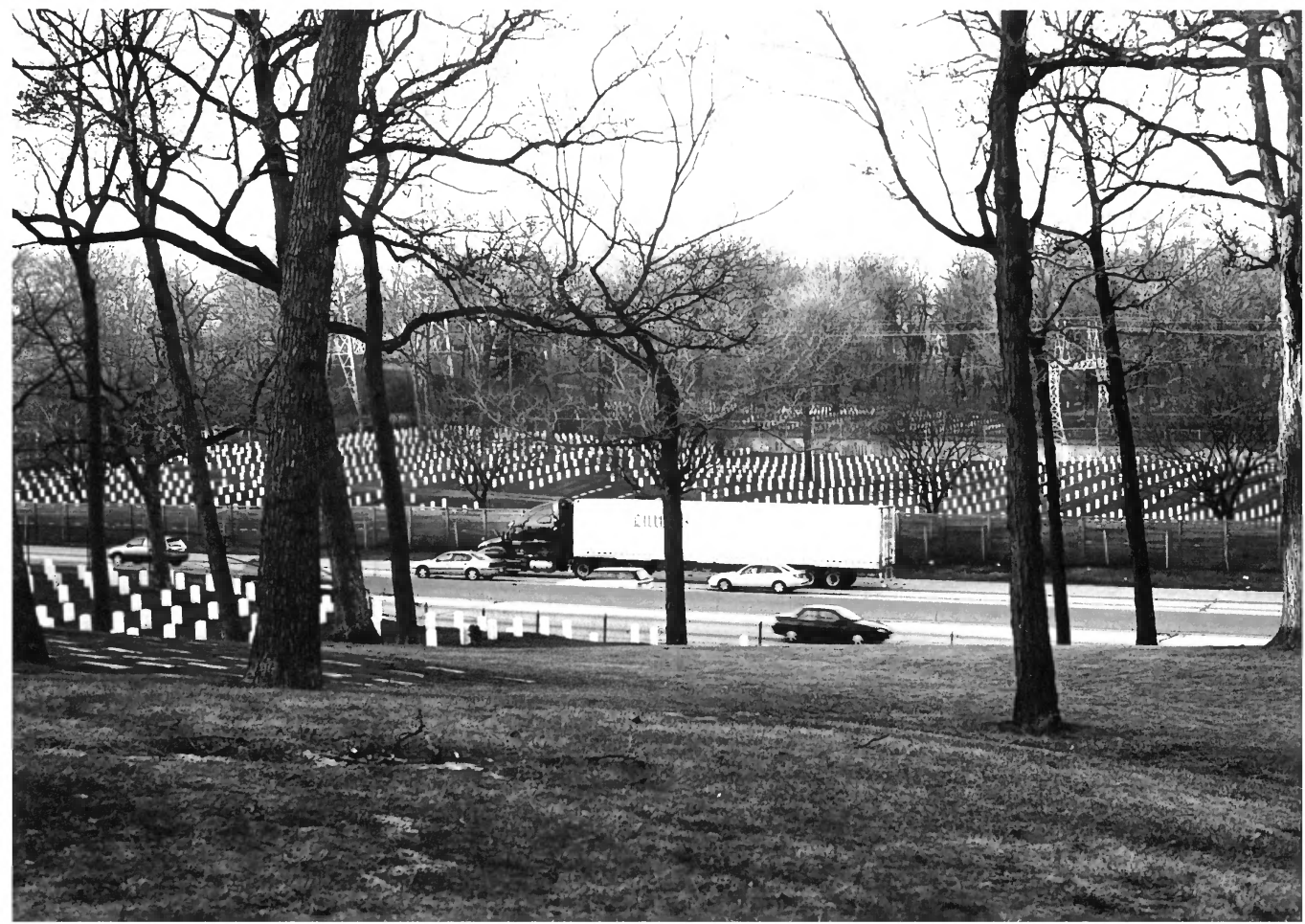
DECEMBER 20, 2004

SOLDIERS HOME FOUNDATION OFFICE

NORTH FROM WALKER DR.

OB. 3 AND THROUGHOUT CEMETERY

OB. 3



WOOD NATIONAL CEMETERY BI-SECTED BY I-94  
NATIONAL SOLDIERS HOME HISTORIC DISTRICT  
MILWAUKEE, WISCONSIN

PATRICIA A LYNCH

DECEMBER 20, 2004

SOLDIERS HOME FOUNDATION OFFICE

FACING NORTH FROM WALKER DRINE NEAR OB-3

S-1