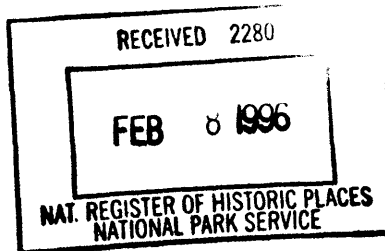


235

United States Department of the Interior  
National Park Service



National Register of Historic Places  
Registration Form

This form is for use in nominating or requesting determinations for individual properties and districts. See instructions in *How to Complete the National Register of Historic Places Registration Form* (National Register Bulletin 16A). Complete each item by marking "x" in the appropriate box or by entering the information requested. If an item does not apply to the property being documented, enter "N/A" for "not applicable." For functions, architectural classification, materials, and areas of significance, enter only categories and subcategories from the instructions. Place additional entries and narrative items on continuation sheets (NPS Form 10-900a). Use a typewriter, word processor, or computer, to complete all items.

1. Name of Property

historic name Dr. Salsbury's Laboratories, Main Office and Production Laboratory Building  
other names/site number Floyd County Museum

2. Location

street & number 500 Gilbert Street NA  not for publication  
city or town Charles City NA  vicinity  
state Iowa code IA county Floyd code 067 zip code 50616

3. State/Federal Agency Certification

As the designated authority under the National Historic Preservation Act, as amended, I hereby certify that this  nomination  request for determination of eligibility meets the documentation standards for registering properties in the National Register of Historic Places and meets the procedural and professional requirements set forth in 36 CFR Part 60. In my opinion, the property  meets  does not meet the National Register criteria. I recommend that this property be considered significant  nationally  statewide  locally. ( See continuation sheet for additional comments.)

Jamie Chalkin, Director 2-1-96  
Signature of certifying official/Title Date

State of Federal agency and bureau

In my opinion, the property  meets  does not meet the National Register criteria. ( See continuation sheet for additional comments.)

Signature of certifying official/Title Date

State or Federal agency and bureau

4. National Park Service Certification

I hereby certify that the property is:

- entered in the National Register.  See continuation sheet.
- determined eligible for the National Register.  See continuation sheet.
- determined not eligible for the National Register.
- removed from the National Register.
- other, (explain:)

Edson K. Beall 3/7/96  
Signature of the Keeper Date of Action

Entered in the  
National Register

5. Classification

Ownership of Property  
(Check as many boxes as apply)

- private
- public-local
- public-State
- public-Federal

Category of Property  
(Check only one box)

- building(s)
- district
- site
- structure
- object

Number of Resources within Property  
(Do not include previously listed resources in the count.)

Contributing	Noncontributing	
1		buildings
		sites
		structures
		objects
1		Total

Name of related multiple property listing  
(Enter "N/A" if property is not part of a multiple property listing.)

N/A

Number of contributing resources previously listed  
in the National Register

0

6. Function or Use

Historic Functions  
(Enter categories from instructions)

COMMERCE/business

Current Functions  
(Enter categories from instructions)

RECREATION AND CULTURE/museum

7. Description

Architectural Classification  
(Enter categories from instructions)

MODERN MOVEMENT

Materials  
(Enter categories from instructions)

foundation CONCRETE

walls BRICK

roof ASPHALT

other

Narrative Description

(Describe the historic and current condition of the property on one or more continuation sheets.)

8. Statement of Significance

Applicable National Register Criteria

(Mark "x" in one or more boxes for the criteria qualifying the property for National Register listing.)

- A Property is associated with events that have made a significant contribution to the broad patterns of our history.
- B Property is associated with the lives of persons significant in our past.
- C Property embodies the distinctive characteristics of a type, period, or method of construction or represents the work of a master, or possesses high artistic values, or represents a significant and distinguishable entity whose components lack individual distinction.
- D Property has yielded, or is likely to yield, information important in prehistory or history.

Criteria Considerations

(Mark "x" in all the boxes that apply.)

Property is:

- A owned by a religious institution or used for religious purposes.
- B removed from its original location.
- C a birthplace or grave.
- D a cemetery.
- E a reconstructed building, object, or structure.
- F a commemorative property.
- G less than 50 years of age or achieved significance within the past 50 years.

Areas of Significance

(Enter categories from instructions)

COMMERCE

INDUSTRY

Period of Significance

1933 - 1945

Significant Dates

1933

1937

Significant Person

(Complete if Criterion B is marked above)

Salsbury, Joseph Edward

Cultural Affiliation

Architect/Builder

Cleveland, Mortimer

Stark Building Company

Narrative Statement of Significance

(Explain the significance of the property on one or more continuation sheets.)

9. Major Bibliographical References

Bibliography

(Cite the books, articles, and other sources used in preparing this form on one or more continuation sheets.)

Previous documentation on file (NPS):

- preliminary determination of individual listing (36 CFR 67) has been requested
- previously listed in the National Register
- previously determined eligible by the National Register
- designated a National Historic Landmark
- recorded by Historic American Buildings Survey # \_\_\_\_\_
- recorded by Historic American Engineering Record # \_\_\_\_\_

Primary location of additional data:

- State Historic Preservation Office
- Other State agency
- Federal agency
- Local government
- University
- Other

Name of Property

County and State

10. Geographical Data

Acreege of Property less than one acre

UTM References

(Place additional UTM references on a continuation sheet.)

1 15 526150 4767650
Zone Easting Northing

3
Zone Easting Northing

See continuation sheet

Verbal Boundary Description

(Describe the boundaries of the property on a continuation sheet.)

Boundary Justification

(Explain why the boundaries were selected on a continuation sheet.)

11. Form Prepared By

name/title Scott Lamprich, Museum Director and Helen B. Webster, Board Member

organization Floyd County Historical Society date 6-23-95

street & number 500 Gilbert Street telephone 515 228-1099

city or town Charles City state Iowa zip code 50616

Additional Documentation

Submit the following items with the completed form:

Continuation Sheets

Maps

A USGS map (7.5 or 15 minute series) indicating the property's location.

A Sketch map for historic districts and properties having large acreage or numerous resources.

Photographs

Representative black and white photographs of the property.

Additional items

(Check with the SHPO or FPO for any additional items)

Property Owner

(Complete this item at the request of SHPO or FPO.)

Floyd County Historical Society

name

street & number 500 Gilbert Street telephone 515 228-1099

city or town Charles City state Iowa zip code 50616

Paperwork Reduction Act Statement: This information is being collected for applications to the National Register of Historic Places to nominate properties for listing or determine eligibility for listing, to list properties, and to amend existing listings. Response to this request is required to obtain a benefit in accordance with the National Historic Preservation Act, as amended (16 U.S.C. 470 et seq.).

Estimated Burden Statement: Public reporting burden for this form is estimated to average 18.1 hours per response including time for reviewing instructions, gathering and maintaining data, and completing and reviewing the form. Direct comments regarding this burden estimate or any aspect of this form to the Chief, Administrative Services Division, National Park Service, P.O. Box 37127, Washington, DC 20013-7127; and the Office of Management and Budget, Paperwork Reductions Projects (1024-0018), Washington, DC 20503.

United States Department of the Interior  
National Park ServiceNational Register of Historic Places  
Continuation SheetSection number 7 Page 1Dr. Salsbury's Laboratories  
Floyd Iowa

Dr. Joseph Edward Salsbury owned a number of buildings in Charles City. The stone structure located at the corner of Clark and Jackson streets was demolished in the Urban Renewal Redevelopment project after the 1968 tornado. The 1929 Jackson Street structure is a modest one story building and is owned by the Young Construction Company for an office, material and equipment storage. The 1933-37 Gilbert Street building is now owned by the Floyd County Historical Society and encompasses the Floyd County Museum. The 1935 experimental and research farm located east of Charles City is owned by the Solvay Company and used for animal and poultry research. The original appearance of this facility has been drastically changed. The office and lab building, the house and garage have been removed. The 1941 L Street building was conveyed by the Salsbury's to the Charles City Area Development Corporation and burned to the ground in 1978.

The Gilbert Street building was selected for nomination. It is located in the Village of Freeman addition first platted in 1854. Charles City was first known as the "Village of Freeman".

The building and grounds are visible and accessible from Hwy--18-218, four residential streets, parking area and sidewalks. (Sketch and Topography Maps A - B)

The first half of the building construction was completed in 1935 and the second half completed in 1937. The building is totally masonry and is two stories plus a basement which is one-half above ground. Floors and beams are of reinforced concrete construction. First and second floors are supported by steel reinforced concrete columns. The roof is flat. The structural system is of brick and cement block. The structure provides approximately 33,000 square feet of floor space. The windows on the first and second floors are 4' x 6'. Basement windows vary in height according to outside grade.

The 1994 conservation assessment report prepared by Geoffrey I. Brown, Conservator states: "The building appears to be extremely well built and in sound condition. Despite the prevalence of poor concrete design construction in 1930's buildings, this building is an example of the highest quality of work available at the time and appears, in fact, to exceed the quality of work usually seen today",

The building was constructed in two parts. The first part was designed in 1933 and used for administration and company related operations. Expansion continued. In 1936 the second part was designed and used for research laboratories, related uses and offices.

United States Department of the Interior  
National Park Service

National Register of Historic Places  
Continuation Sheet

Dr. Salsbury's Laboratories  
Floyd Iowa

Section number 7 Page 2

---

Continuation

Change in use of the original building has required modifications.

Exterior: For security purposes windows in the dock area have been replaced with brick and ground level basement windows have either been replaced with brick or barred.

A previous open employee entrance has been enclosed with steel and glass providing a handicapped entrance, a wheel chair lift and an additional entrance to the building from the parking area. The addition enhances rather than detracts from the original building.

Interior: The lobby area has been enlarged from the new entrance. Handicapped rest rooms and a passenger elevator have been installed. Partitions of some of the smaller offices have been removed to provide desirable and workable display areas.

Maintenance of the facility is a continuing process. Major items include tuckpointing of the entire structure, a new roof and heating unit.

Vegetation and original plantings have been replaced over the years. The size of the lot, sidewalks and related streets have remained the same.

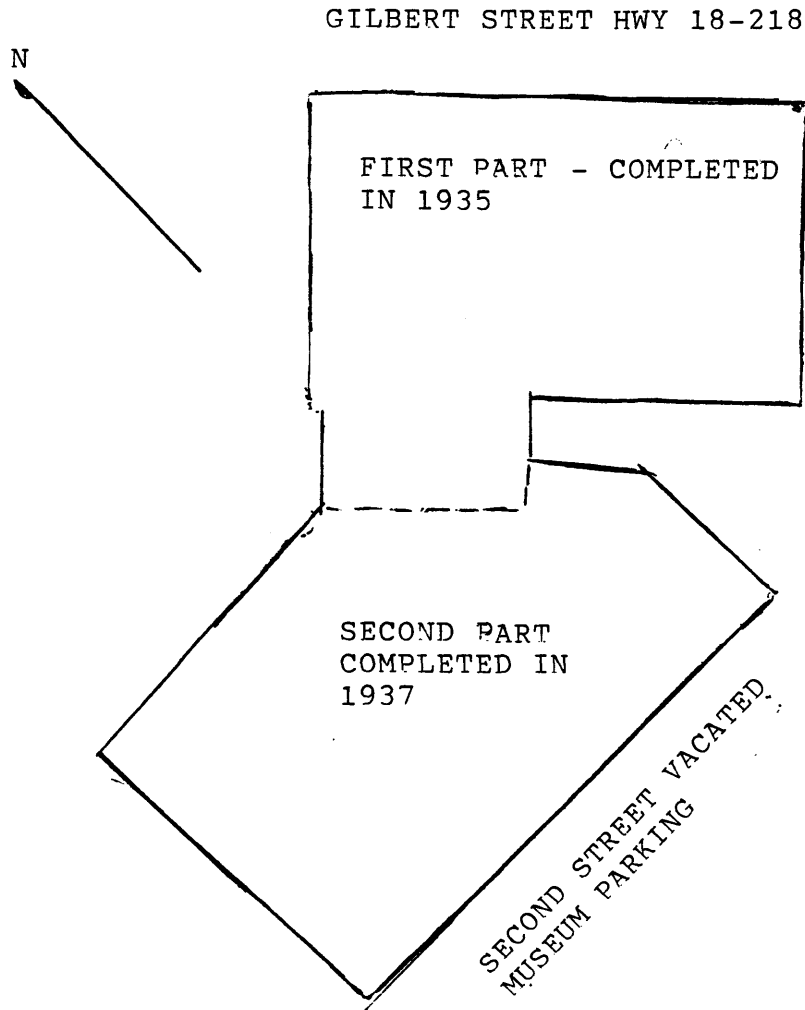
The nominated building was the core of the historic Salsbury enterprise. Dr. Salsbury's office is occupied by the Museum Director who directs the operation of the museum.

United States Department of the Interior  
National Park Service

National Register of Historic Places  
Continuation Sheet

Section number 7 Page 3

RE: Salsbury's Laboratories  
Floyd Iowa



Building Parts - First and Second

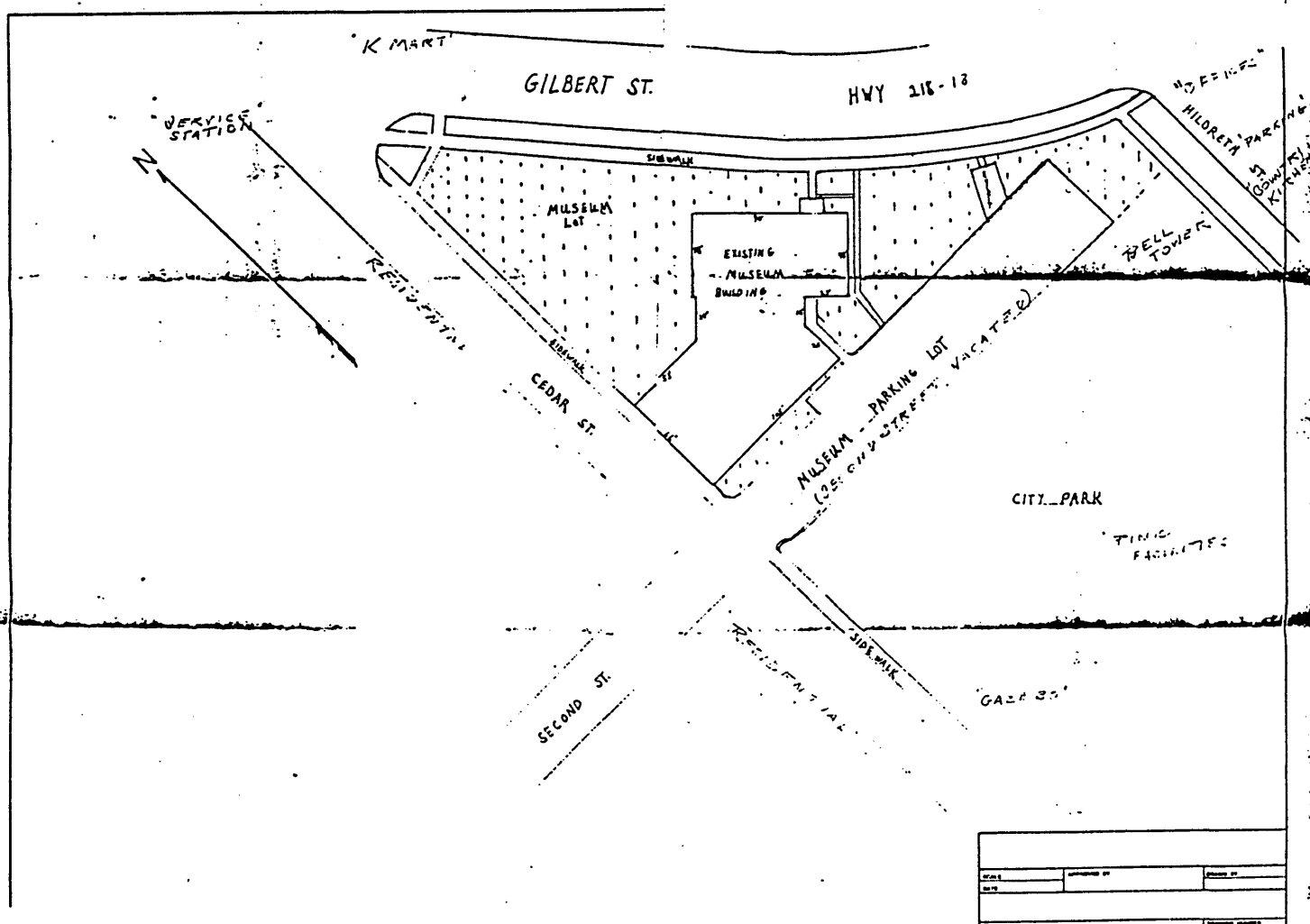
United States Department of the Interior  
National Park Service

National Register of Historic Places  
Continuation Sheet

Section number 7 Page 4

Re: Salsbury's Laboratories  
Floyd Iowa

Site Plan





United States Department of the Interior  
National Park Service

National Register of Historic Places  
Continuation Sheet

Re: Salsbury's Laboratories  
Floyd Iowa

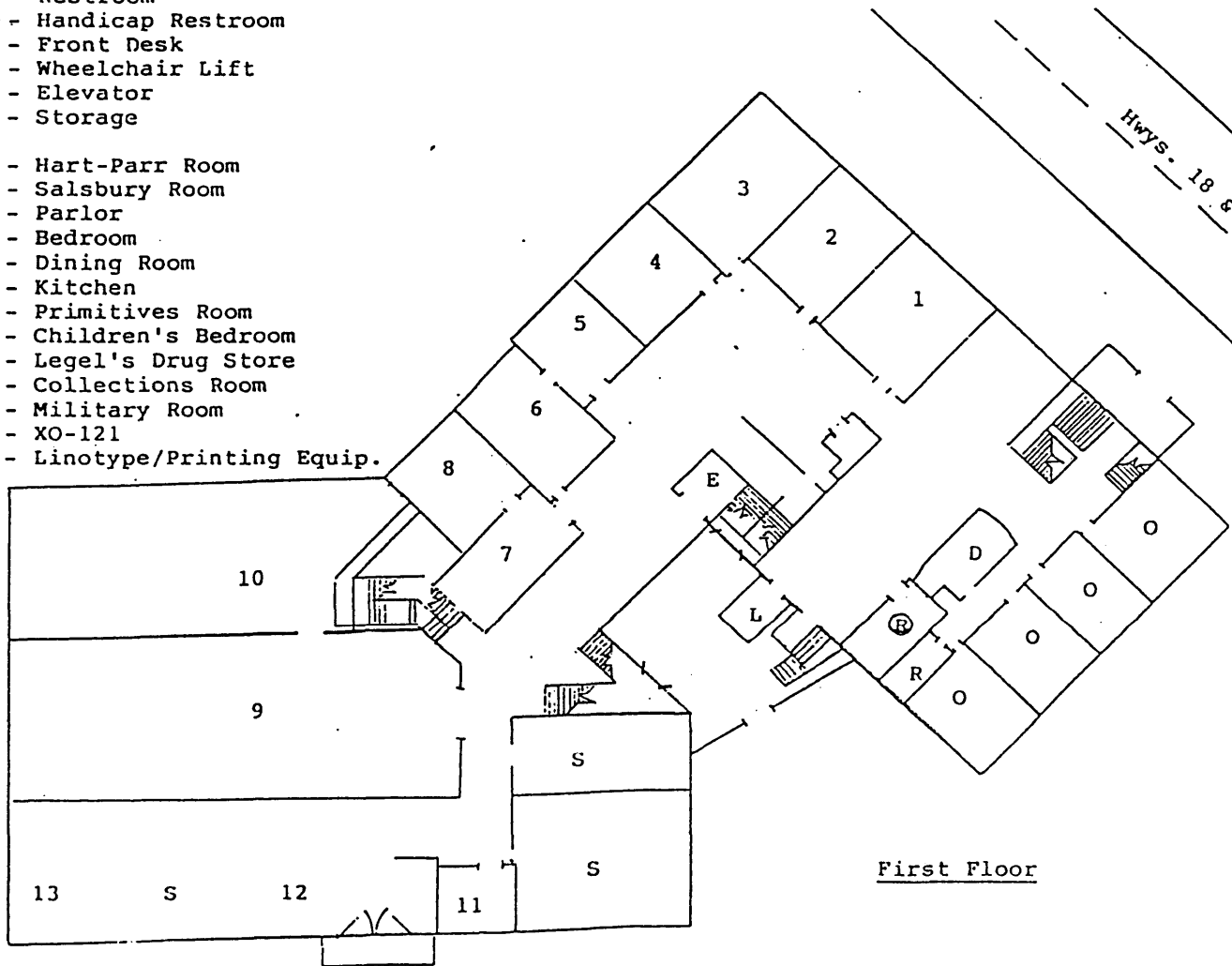
Section number 7 Page 5

Floor Plan - First Floor

- O - Office
- R - Restroom
- Ⓡ - Handicap Restroom
- D - Front Desk
- L - Wheelchair Lift
- E - Elevator
- S - Storage

- 1 - Hart-Parr Room
- 2 - Salsbury Room
- 3 - Parlor
- 4 - Bedroom
- 5 - Dining Room
- 6 - Kitchen
- 7 - Primitives Room
- 8 - Children's Bedroom
- 9 - Legel's Drug Store
- 10 - Collections Room
- 11 - Military Room
- 12 - XO-121
- 13 - Linotype/Printing Equip.

Cedar Street



First Floor

United States Department of the Interior  
National Park Service

National Register of Historic Places  
Continuation Sheet

Dr. Salsbury's Laboratories  
Floyd Iowa

Section number 7 Page 6

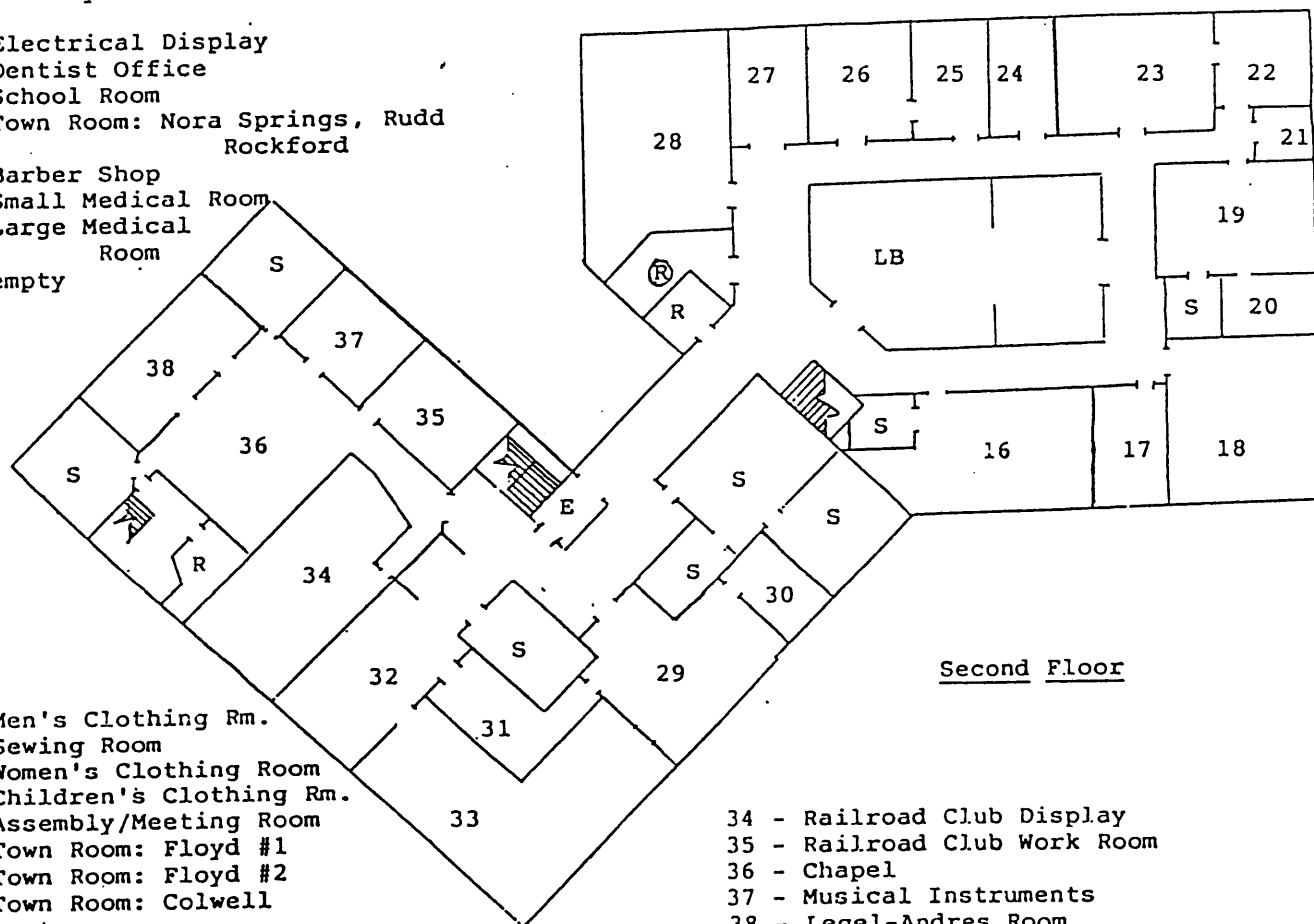
Floor Plan - Second Floor

- S - Storage
- R - Restroom
- Ⓡ - Handicap Restroom
- E - Elevator
- LB - Library

- 16 - Electrical Display
- 17 - Dentist Office
- 18 - School Room
- 19 - Town Room: Nora Springs, Rudd  
Rockford
- 20 - Barber Shop
- 21 - Small Medical Room
- 22 - Large Medical  
Room
- 23 - empty

- 24 - Men's Clothing Rm.
- 25 - Sewing Room
- 26 - Women's Clothing Room
- 27 - Children's Clothing Rm.
- 28 - Assembly/Meeting Room
- 29 - Town Room: Floyd #1
- 30 - Town Room: Floyd #2
- 31 - Town Room: Colwell
- 32 - empty
- 33 - Lab (to be restored)

- 34 - Railroad Club Display
- 35 - Railroad Club Work Room
- 36 - Chapel
- 37 - Musical Instruments
- 38 - Legel-Andres Room



Second Floor

United States Department of the Interior  
National Park Service

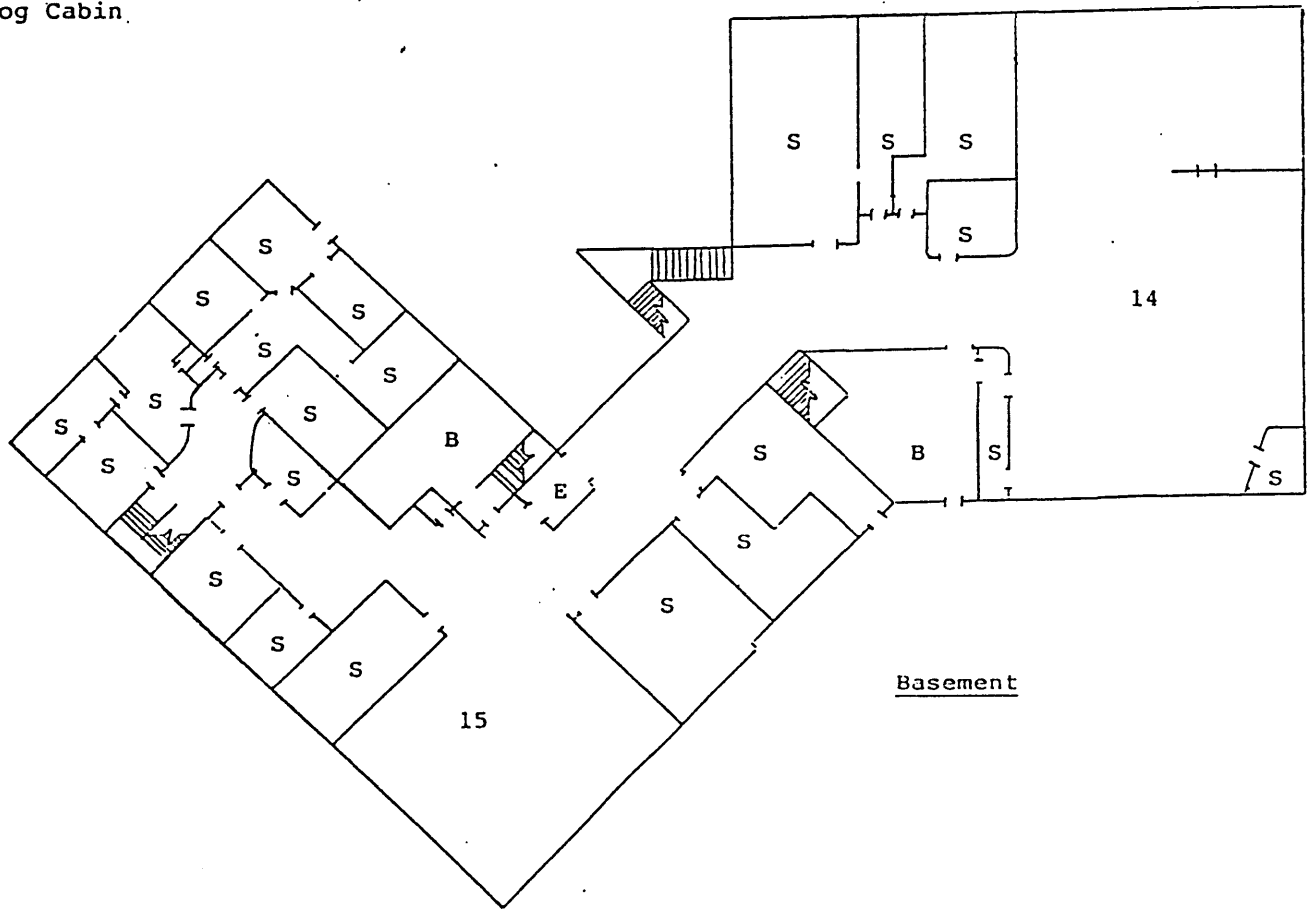
National Register of Historic Places  
Continuation Sheet

Re: Salsbury's Laboratories  
Floyd Iowa

Section number 7 Page 7

Floor Plan - Basement

- S - Storage
- B - Boiler Room
- E - Elevator
  
- 14 - Farm Machinery
- 15 - Log Cabin



**United States Department of the Interior  
National Park Service**

**National Register of Historic Places  
Continuation Sheet**

Dr. Salsbury's Laboratories  
Floyd Iowa

Section number 8 Page 2

---

Builder - C. E. Larson Construction

United States Department of the Interior  
National Park ServiceNational Register of Historic Places  
Continuation SheetSection number 8 Page 3Dr. Salsbury's Laboratories  
Floyd IowaSignificance Summary

The Salsbury Laboratories building is significant under Criterion A for its association with development of poultry health products which made possible the great expansion of the poultry industry from a backyard sideline business on family farms to a specialized farm business where huge numbers of poultry were concentrated together for poultry and egg production. The building is also significant under Criterion B for its association with Joseph E. Salsbury. It was Salsbury, according to O. H. V. Stalheim--historian of veterinary medicine - who "best perceived the need for and developed dependable poultry products. He provided service and education to help poultry breeders solve disease problems and emphasized research and the use of efficacious drugs and biologic products. The career of this veterinarian-entrepreneur-businessman-benefactor illustrated the developments that saved the faltering poultry industry from diseases and parasites". (Stalheim, 1994:38)

Before Salsbury's activities in poultry production, a chicken, goose or turkey attracted little attention by veterinarians because the birds were of relatively low value compared to a sick horse or cow. After Dr. Salsbury established his practice in Charles City in 1923, however, and began to see the value of taking a flock approach to applying veterinary medicine, attitudes began to change. Still largely a "home industry", poultry production was nevertheless expanding greatly under the influence of developments in egg incubation and baby chick brooding and Salsbury helped lead the way to a mutually satisfactory client relationship between veterinarian and poultry breeder.

In 1930, Salsbury decided to end his general veterinary practice and devote full time to providing useful medicines for poultry raisers. By this time he already, in 1927, set up a sales force to distribute products through dealers and, in 1929, equipped a new building with various grinders, mixers, dryers, and granulators for manufacturing his pharmaceuticals and then biologics (vaccines) as well as starting and advertising program in national poultry journals. Soon he began an annual short course on poultry diseases and issued the first edition of Dr. Salsbury's Poultry Health Manual. By 1933, the initial phase of expansion had rapidly outgrown the capacity of the 1929 building on Jackson Street that Dr. Salsbury constructed a new center on operations on Gilbert Street--the subject of this nomination.

United States Department of the Interior  
National Park ServiceNational Register of Historic Places  
Continuation SheetDr. Salsbury's Laboratories  
Floyd IowaSection number 8 Page 4

The new building first absorbed the company's pharmaceutical manufacturing, followed shortly by the main office, and then biologics, leaving the older building for production of Avi-Tone--a tonic for preventing and expelling worms--which constituted the company's leading product during the early 1930s. The 1933 building marks the arrival of Salsbury Laboratories as a major established and growing firm. Expansion continued and, in 1937, an addition to the Gilbert Street building was completed and several research laboratories were installed in the facility. During the period to 1945, as the development of new drugs became a major competitive factor in the industry, Salsbury Laboratories added the "L" Street building for pharmaceutical manufacturing. Gradually, the Gilbert Street building became devoted to administration and company operations. The era closed in 1944-45 with the introduction of Ren-O-Sal, a drug dissolved in drinking water to control intestinal infractions and which also proved to speed the growth of broilers. This "one-in-a-million" product opened an unprecedented new era of enthusiastic demand by poultry raisers and the company entered upon yet another stage of growth in the production of feed additives, pharmaceuticals, poultry biologics, and livestock biologics.

Salsbury's Laboratories was a worldwide supplier of poultry products.  
(Stalheim 1994:47-53)

Dr. Salsbury was a leader in poultry health. He was a respected leader in the community and generous in his contributions to public service organizations. (Stalheim 1994:35-52-53)

Reflecting on the accomplishments of Dr. Joseph Edward Salsbury, one only has to view the expanding Solvay-Salsbury Complex so vital to the economy of Charles City and realize it all started over 70 years ago with the preparation of hand-made poultry capsules. His life and accomplishments depict the "American Dream".

**United States Department of the Interior  
National Park Service**

**National Register of Historic Places  
Continuation Sheet**

Dr. Salsbury's Laboratories  
Floyd Iowa

Section number   9   Page   5  

---

Major Bibliographical

Stalheim, O.H.V. The Winning of Animal Health: 100 Years of Veterinary  
Medicine, Ames, Iowa Iowa State University Press, 1994

Dr. Arvid E. Osterberg, Consulting Architect - 1994 Architectural  
Conservation Assessment Report

Geoffrey I. Brown, Conservator - 1994 Conservation Assessment Report

A Tribute to Joseph E. Salsbury (1887-1967) printed by Laboratories

Dr. Salsbury's Poultry Health Manual, published by Laboratories -  
Copyright 1937

Charles City Press publications: 1923, New Resident of City Comes  
Well Recommended; 1933, \$50,000 Lab will be Completed by March 1;  
1963, Charles City is Proud to Announce Dr. Salsbury's Recognition  
Week (1923-1962); 1967, Final Respects Given "Dr. Joe"

Deed to Property

Building Blue prints (original)

SketchMap and Building Construction information provided by Dick Young,  
Young Construction Company - 1995

Oral interviews in 1994 and 1995 relating to general information  
of the Salsbury operation with Robert Lewis, Salsbury Advertising Manager  
and with Richard Herbrechtsmeyer, Vice President, First Security Bank  
relating to the history of the L Street Building

United States Department of the Interior  
National Park Service

**National Register of Historic Places  
Continuation Sheet**

Dr. Salsbury's Laboratories  
Floyd Iowa

Section number 10 Page 6

---

Verbal Description

The nominated building is located on property bounded by Hwys 18-218. Cedar Street and Second Street (vacated) in Charles City, Iowa. It includes all that part of Block G of the Village of Freeman, now incorporated in and as a part of Charles City, Iowa lying south and west of US 18-218 highway.

Boundary Justification

The boundary includes the single resource most visibly and historically associated with this era of the company's development.