







PRIVATE RESIDENCE



















VISITOR CENTER
Elevation 8000 ft.

3 8





The Life Zones

Life zone boundaries are complex and often defined by grass, but become more involved for animals.

Visit our website at www.nps.gov/visiting



Disturbed ground



Getting on Top?

Would you like to stand on top?
Don't do it!



Build a ladder?





The Life Zones

Life zones are horizontal belts of vegetation and climate that are defined by altitude and latitude. The life zones are determined by the amount of precipitation and temperature.







TOWER



FIRE HOSE











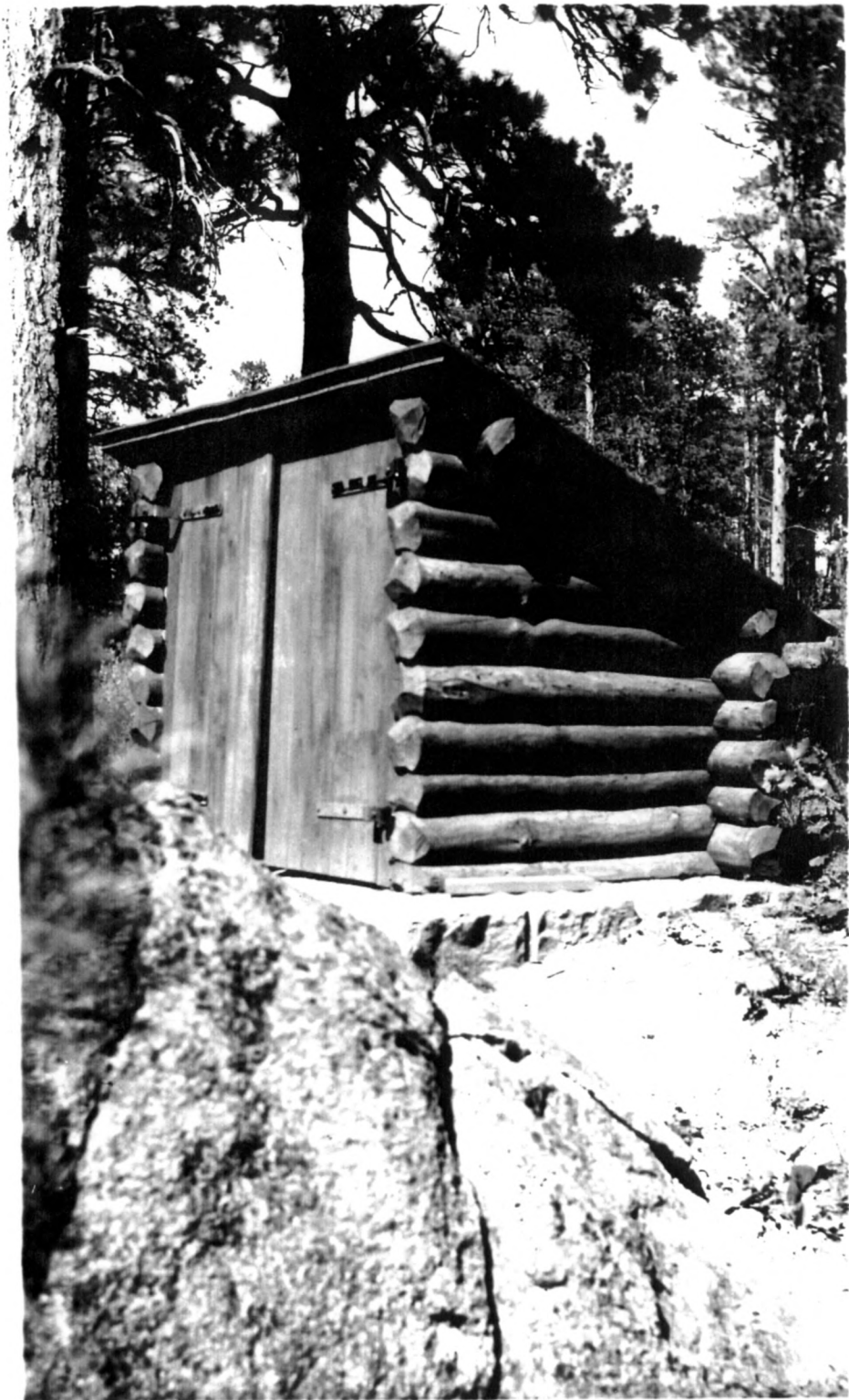
In Old Headquarters Area Historic District - HS-1

"Custodian's Residence after remodeling"

Report to Howard W. Baker from Resident Landscape Architect S. Serrano
on ECW/CCC Activities - Oct. 1, 1935 to Oct. 1, 1936



Old Headquarters Area Historic District - Administration Building (HS-3)
Historic Photograph, dated 1935



Old Headquarters Area Historic District - Fire Hose House (HS-13)
Historic Photograph, dated 7/1/37



Laying Flagstone walk
(Note size of individual stone)



Showing portion of completed walk.

Report to Howard W. Baker
from Resident Landscape Architect S. Serrano
ECW/CCC Activities -
Oct. 1, 1935 to Oct. 1, 1936



Tree transported to new site



Report to Howard W. Baker
from Resident Landscape Architect S. Serrano
ECW/CCC Activities -
Oct. 1, 1935 to Oct. 1, 1936

Tree safely moved to new
site with minimum amount of disturbance



Old Headquarters Area - view of parking lot and center island, 1937.