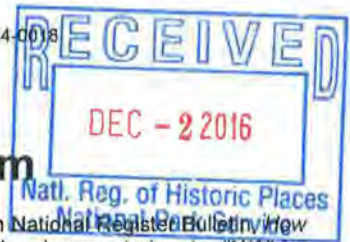


506



National Register of Historic Places Registration Form

This form is for use in nominating or requesting determinations for individual properties and districts. See instructions in National Register Bulletin #39 to Complete the National Register of Historic Places Registration Form. If any item does not apply to the property being documented, enter "N/A" for "not applicable." For functions, architectural classification, materials, and areas of significance, enter only categories and subcategories from the instructions. Place additional certification comments, entries, and narrative items on continuation sheets if needed (NPS Form 10-900a).

1. Name of Property

Historic name Engle, Jacob S., House
Other names/site number KHRI #041-396
Name of related Multiple Property Listing N/A

2. Location

Street & number 102 Highland Drive not for publication
City or town Abilene vicinity
State Kansas Code KS County Dickinson Code 041 Zip code 67410

3. State/Federal Agency Certification

As the designated authority under the National Historic Preservation Act, as amended,
I hereby certify that this x nomination request for determination of eligibility meets the documentation standards for registering properties in the National Register of Historic Places and meets the procedural and professional requirements set forth in 36 CFR Part 60.

In my opinion, the property x meets does not meet the National Register Criteria. I recommend that this property be considered significant at the following level(s) of significance:

 national statewide x local Applicable National Register Criteria: A B x C D

Patrick Zollner
Signature of certifying official/Title Patrick Zollner, Deputy SHPO Date 11-21-16

Kansas State Historical Society
State or Federal agency/bureau or Tribal Government

In my opinion, the property meets does not meet the National Register criteria.

Signature of commenting official _____ Date _____

Title _____ State or Federal agency/bureau or Tribal Government _____

4. National Park Service Certification

I hereby certify that this property is:

 X entered in the National Register determined eligible for the National Register

 determined not eligible for the National Register removed from the National Register

 other (explain): _____

Alycia Beardsley
Signature of the Keeper Date of Action 1-11-17

Engle, Jacob S., House
Name of Property

Dickinson County, Kansas
County and State

5. Classification

Ownership of Property
(Check as many boxes as apply.)

<input checked="" type="checkbox"/>	private
<input type="checkbox"/>	public - Local
<input type="checkbox"/>	public - State
<input type="checkbox"/>	public - Federal

Category of Property
(Check only **one** box.)

<input checked="" type="checkbox"/>	building(s)
<input type="checkbox"/>	district
<input type="checkbox"/>	site
<input type="checkbox"/>	structure
<input type="checkbox"/>	object

Number of Resources within Property
(Do not include previously listed resources in the count.)

<u>Contributing</u>	<u>Noncontributing</u>	
2		buildings
		sites
		structures
		objects
2	0	Total

Number of contributing resources previously listed in the National Register

0

6. Function or Use

Historic Functions
(Enter categories from instructions.)

Domestic: Single-dwelling

Domestic: Secondary structure

Current Functions
(Enter categories from instructions.)

Domestic: Single-dwelling

Domestic: Hotel (Bed & Breakfast)

Domestic: Secondary structure

7. Description

Architectural Classification
(Enter categories from instructions.)

Queen Anne (Free Classic subtype)

Craftsman

Materials
(Enter categories from instructions.)

foundation: Stone

walls: Wood

roof: Asphalt shingle

other: Brick

Engle, Jacob S., House
Name of Property

Dickinson County, Kansas
County and State

Narrative Description

Summary

The Jacob S. Engle House at 102 Highland Drive in Abilene, Dickinson County, Kansas was built in 1911 in a transitional style mixing restrained Free Classic Queen Anne and Craftsman elements. The 2½-story wood frame house is prominently situated on the west side of Buckeye Avenue (Kansas Highway 15) between Highland Drive and NW 14th Street (Old US-40 Highway). Although historically addressed 1314 N Buckeye Avenue, the address was changed to 102 Highland Drive in circa 1960. The clapboard and brick-veneer house sits atop a stone foundation and has a cross gable roof with square-butt shingles in the gable ends. Pedimented porches on the north, east, and south elevations have simple red brick supports. A circa 1911 garage sits to the northwest of the house; both buildings are considered contributing.

Elaboration

Site

Although within a residential neighborhood, the Engle House sits at the southwest corner of the intersection of two major thoroughfares about one mile north of downtown Abilene (*Figures 1 & 2*). The north and east boundaries of the nominated parcel were recently comprised of a dense row of woody shrubs and trees, creating a buffer between the house and streets; however, the plantings have been cleared. A wooden privacy fence (non-historic) wraps the parcel on the west and east sides and a tall metal fence runs along the north boundary. The south portion of the property is open to Highland Drive.

The house sits in the eastern portion of the parcel and is separated from the old garage by a curbed concrete driveway accessed from Highland Drive. The garage is due west of the house, parallel with the western property boundary. A flagstone sidewalk leads from Highland Drive to the south porch of the house. Another sidewalk connects the east steps to the north side of the house; this concrete walk curves around to the porte cochere on the north. A concrete sidewalk extends from the west entrance the driveway.

Sometime between 1932 and 1965 the east entrance and driveway to the property was “vacated” and the house address was changed from 1314 N. Buckeye to 102 Highland. The old driveway on the north side of the house that ran east to west from Buckeye remains; although, street access has been removed. The driveway continues around the west side of the house and turns south to access Highland Drive.

House

This 2½-story clapboard house has all of its original exterior features. It has two historic primary elevations – one on the east and one on the south – and features many character-defining elements. The house has a T-shaped plan with the east-west portion roughly the same length as the north-south portion; a small gable-roofed mass protrudes from the north portion of the west elevation. The wood-frame structure sits atop a stone foundation that has been parged with a cementitious coating at an unknown date. Wall cladding includes brick veneer (on wood frame) from ground level to the sills of the main level window and clapboard above this. Unless otherwise noted, all of the house’s windows are 6-over-1 double-hung wood sashes; most have non-historic metal storm windows. Exterior window and door casings are simple. The cross-gable roof is covered with asphalt shingles but was originally wood shingle.

The **east (principal) façade** (*Photo 1*) is symmetrical, dominated by a front-facing gable with butt-end shingles and centered tripartite window. Both the main and second levels have two bays. The house’s main entry is through a single wooden door with one vertical light and fixed single-pane sidelights; this door system is the northern bay of this elevation. A prominent – though plain – horizontal cornice separates the second level from the pedimented gable of the attic. The cornice has an arced top and L-shaped block modillions. The built-in gutters’ exposed ends at the roof eaves contain a single Greek key molding topped by a small cornice. The tripartite window centered in the gable end is a modified Palladian: a rectangular 6-over-1 unit set between two shorter and narrower 8-pane fixed units. A gable-fronted portico with bead-board ceiling protects the entrance at the main level; the roof and gable design mimic the house. The portico is supported by a square brick columns (and pilasters at house) that integrate into the porch wall; the brick walls and columns/pilasters are capped with stone. Six concrete steps centered on the entry lead from the east walk to the concrete porch floor that wraps around the building to the south, leading to the house’s secondary east entrance within the east

Engle, Jacob S., House
Name of Property

Dickinson County, Kansas
County and State

elevation of the north-south portion of the T-plan. This entrance (comprised of a single door identical to the main door but without sidelights) is also covered. Above this entrance is a 1-over-1 window.

The street-facing **south elevation** (*Photo 2*) is similar to the east elevation in that it is also dominated by a front-facing gable with butt-end shingles and centered tripartite window. This gable-fronted elevation protrudes from the east-west portion of the house's mass. This inset portion of the south elevation contains a single window at each level; the main level window (which has non-historic faux shutters) is covered by the portico sheltering the secondary east elevation entrance. This portico matches the design of the one on the east elevation. The main and second levels of the south elevation's dominate wall contain the same window arrangement: a single window in the west portion of the wall and a tripartite unit in the east. Unlike the Palladian-esque design of the gable-end units, this window unit contains a fixed 6-pane window between 6-over-1 units; the trim's top rail is continuous between the three windows, but the center fixed unit is half the height of the surrounding windows. Two additional windows are found in the second level: a narrow 6-pane window unit between the west window and the tripartite window and a 1-over-1 corner unit. The basement level is exposed along this elevation west of the porch; the brick wainscot has brick water table and is punctured by two short window units lighting the boiler and storage rooms. The south elevation of the house's western protrusion contains a single window at the main level and a band of 8-over-1 windows lighting the sleeping porch.

The **west (rear) elevation** (*Photo 3*) is dominated by a front-facing gable protrusion with butt-end shingles in the gable but no window. A single window is off-set to the north in the main level; at the second level is a band of four 8-over-1 windows lighting the sleeping porch. Flush with the wall plane of this extension is the west wall of the one-story enclosed porch at the house's northwest corner; a single window is centered within this area. A wide wooden water table separates the main level from the basement level on this extension; a single 2-pane window into the laundry room is located at the ground level of the south portion of the extension. The remainder of the house's west wall is set back from the front-facing gable extension. A non-historic Craftsman-style door leads to the basement from a small one-step concrete stoop to the north of this set-back section of the elevation. Above this door is a single window. A shed-roof dormer lighting the attic is directly above this window. To the south of the door is a narrow window. A single window is to the south of this with a matching window directly above the south window.

The **north elevation** (*Photo 4*) is the most elaborate of the four, showing the various architectural influences used in the house's design. A front-facing cross gable (matching the east and south elevations' gables) dominates this elevation; however, unlike the other elevations, the wall plane below this gable is set back with a two-story chamfered bay projection just off-center (to the east) of the gable. A decorative bracket "supports" the corners of the gable while two small block modillions are found at the junction between the gable end and bay window. At the main level from the east, the fenestration is as follows: A) Tripartite window unit containing a central 6-over-1 window between a 6-pane fixed window; the top rails of each window are aligned; B) Entry door with 6-over-1 sidelight to east of door; C) Chamfered bay containing a 6-pane window between two 6-over-1 windows; D) Single window with an ice door between the window and the enclosed porch to the west. This hipped-roof porch protrudes at the northwest corner of the house; on its north side is a single pedestrian door, accessed by a set of four concrete steps, and a single window to the east of the door. A single window is within the east elevation of this porch. The second level fenestration pattern is similar to the main level. From the east: A) Single window; B) Pair of ganged windows, which are aligned with the interior stairs they light; C) Chamfered bay with three single windows; D) Small window into closet; E) Single window. The north elevation of the sleeping porch's upper level contains a pair of 8-over-1 ganged windows. Three rectangular masonry openings puncture the brick wainscoting at the ground level. Finally, a flat-roofed porte cochere covers the north elevation's entry. Brick columns support the roof, which is capped with a simple wooden railing.

Interior

The Engle House's interior has changed little in the years since the house was first constructed. Finishes include hardwood floors, plaster walls, and wooden baseboards, window/door trim, and crown molding (in some of the more public spaces). Most of the house's original hot-water radiators, hardware, push-button switches, and Craftsman-style light fixtures also remain.

All of the original doors are still intact throughout the house, as well. The kitchen exit door, the north entrance door, the middle second level bedroom porch door, and the sleeping porch door all have a glass panel on the upper third with three horizontal panels (one over the other) on the lower two-thirds. The entrance doors on the east and south façades have a single vertical beveled-glass pane. The non-historic basement entrance door on the west elevation has two rows of 3 panes of glass vertically places on the upper ¼ with the lower ¾'s having two vertical panels. All of the other doors in the house are single panel doors, unless noted otherwise.

Engle, Jacob S., House
Name of Property

Dickinson County, Kansas
County and State

Main Level (Figure 3)

The east entrance opens directly into the **foyer** (*Photos 5 & 6*) in the northeast corner of the house. Natural light illuminates the space from windows in the north and east walls. The west wall is partially enclosed: the south third is open to a small hallway leading to the dining room while the north two-thirds is a half-wall that supports the main staircase to the upper level. The wall is divided into thirds by simple wooden Classical pilasters between elliptical arches; the stair's half wall is surmounted by thin, square balusters typical of the Craftsman style.

The foyer's south wall contains a double door entry into the **formal parlor** in the house's southeast corner. Windows in the south and east walls provide abundant natural light. Box beams run east-west in the ceiling. The **back parlor** (*Photo 7*) is located through a pair of single-panel pocket doors in the formal parlor's west wall. Box beams run east-west in the ceiling. The south wall of this room is dominated by windows; access to the wrap-around porch is through a door in the room's southeast corner. The north wall contains a pair of 9-light window pocket doors leading into the dining room (*Photo 9*). On the west wall is a large brick fireplace that has been painted to accent the feature. There is tile (not original to the house) inlaid with a shelf above the tile and egg-and-dart molding at the top of the brick with a wood mantel on the top. To the north of the fireplace is a single door into a north-south running hallway.

When the house was constructed, this hallway organized the **servants' area**. The butler's room occupied the house's southwest corner and has been modernized into a bathroom. On the west side of the hall and north of the butler's room are secondary stairs, leading both the basement and to the upper levels, and an exterior door. The hallway's east wall contains a laundry chute, and an original corner sink occupies the northeast corner to the north of the door into the back parlor. The kitchen and butler's pantry are located at the north end of this hallway and occupy the house's northwest corner. The **kitchen** has been updated (including the flooring) to accommodate 2016 cooking preferences; although, no wall locations were altered. A historic door with transom, leading to the enclosed back porch, is located at the west end of the north wall.

Through a door in the kitchen's east wall is the **butler's pantry**. This room also has all of the original floor-to-ceiling glass-front door wooden cabinets (*Photo 10*). The floor appears to have the original linoleum floor covering. An ice door is in the north wall and was formerly accessible to the exterior. Centered in the east wall between cabinets is a swinging door (with a glass "peephole" window at eye level) that leads into the **dining room** (*Figures 8 & 9*). Built-in china cabinets are centered on the west wall. Lead frames the 15 glass panes of the doors on the upper portion; a panel of three mirrors is below the pairs of doors, and two rows of three drawers each is on the lower level. The north drawers open from both the dining room and the butler pantry as does the sliding mirror "doors" above the drawers. A bay window comprises the north wall while the east wall contains a door into the hallway leading to the foyer. Like the two parlors, the ceiling has wooden box beams; although, unlike the parlors, cross beams are also present in the dining room. Where the box beams cross, a single exposed-bulb fixture is present.

Organized on the north side of the hallway between the dining room and foyer are the "formal" stairs to the upper level and a short stair leading down to the porte cochere.

Second Level (Figure 4)

The "formal" switchback staircase leading from the foyer to the upper level has a built-in bench at the landing below the north wall's windows. The stairs open into a double-loaded corridor around which the upper level rooms are arranged. When constructed, the house had five bedrooms and one bathroom. Today, there are four bedrooms and two bathrooms, the southwest bedroom having been converted into a bathroom. At the west end of the central corridor is the enclosed **sleeping porch** with the original ceiling light fixture and bead-board walls and ceiling. The hall has an applied wooden wainscot added by the current owner.

Two bedrooms are located at the east end of the central hall; one is directly above the foyer while the other is directly above the formal parlor. Entry into the **southeast bedroom** from the hall is through a doorway in a wall set at a 45 degree-angle from the hallway (*Photo 11*). A door between the **southeast and northeast bedrooms** is located in the rooms' dividing wall. On the west wall of each of these rooms is a historic sizeable closet.

On the south side of the hall and to the east of the southeast bedroom is the **south bedroom** directly above the back parlor. A small enclosed porch is accessed through a door in the south end of the room's east wall; the original closet in the west wall was removed to provide access into the bathroom in the house's southwest corner. It is speculated that this back room might have been the maid's bedroom originally, as it is accessed from a door in the north wall that leads to the

Engle, Jacob S., House
Name of Property

Dickinson County, Kansas
County and State

back stairs. This bedroom-cum-bathroom retains its hot water radiator, and its finishes, although contemporary, blend with the style of the rest of the house. There is also a stackable washer/dryer in this space.

The house's original **bathroom** is located in the northwest corner across the hall from the new bathroom. It has a claw-foot bath tub (replacement of original claw-foot), hot water heat radiator, and 1" hexagonal white tile floor and subway wall tile (*Photo 12*). There is a Greek key pattern "insert" of blue tile just below the top of the subway wall tile and in the blue tile along the floor edge. There is a modern sink (although in keeping with the style of this room) on the west wall with a new light fixture atop the mirror/medicine cabinet; although, the ceiling fixture is original. Just outside the bathroom is a small closet-sized **water closet** (WC); it now used for storage. This room is accessed from the hallway. It is speculated that the original bathroom held a sink and bathtub while the toilet was in this little room. There is a 5-tube wall hanging heat register below the window on the west wall.

A door in the east wall of the bathroom leads into a long closet. A non-historic sink is located on the north wall with a six-light vertical window above it. This closet is also accessible through a door in the **master bedroom's** west wall. This door has a mirrored panel on the bedroom side. Like the dining room below it, this bedroom's north wall is a bay window. A door in the south wall leads to the central corridor. The main stairs are located to the immediate east of the master bedroom.

Attic

The attic is accessed through a set of stairs to the north of the former maid's bedroom. On the south side of this stair is a board that has the words "L Kruger Lumber Abilene for Engle job". The attic is completely open. To the north of the stairs and at the west wall is the large original overflow tank for the hot water heat system (*Photo 13*).

Basement

The full basement is also accessed from the back staircase, as well as from the exterior through a door in the west wall. An open storage area makes up the east portion directly below the foyer and formal parlor. The boiler room is located along the south wall to the west of this storage area, and to the west of the boiler room, in the house's southwest corner is another storage room. The area to the north of this storage room and the boiler room is the laundry room. What appears to be the original laundry sinks are located along the north wall of this space. The homeowners have kept the sinks and have put modern laundry equipment on the west wall (for convenience). A narrow storage room is located directly beneath the stairs leading from the main level to the porte cochere. The walls of the basement, from the window to the inside are between 8½ to 9" thick and are skim coated, or finished, in this area.

Garage/Carriage House

The clapboard carriage house, based on its construction and design, are believed to date to 1911. The front elevation faces east with three-panel sliding doors moving to the north and south of the main entrance, which is to the north 2/3's of the façade. There is a smaller entrance door to the south of these doors. On the south elevation is a "Dutch" door at the far west end; the Engles kept a pony in this space. The west and north elevations have no openings. The roof is hipped and has a flared eave on the east elevation. This structure is divided with a wall between the pedestrian door and garage door from east to west with a staircase leading to the second level.

Engle, Jacob S., House
Name of Property

Dickinson County, Kansas
County and State

8. Statement of Significance

Applicable National Register Criteria

(Mark "x" in one or more boxes for the criteria qualifying the property for National Register listing.)

- A Property is associated with events that have made a significant contribution to the broad patterns of our history.
- B Property is associated with the lives of persons significant in our past.
- C Property embodies the distinctive characteristics of a type, period, or method of construction or represents the work of a master, or possesses high artistic values, or represents a significant and distinguishable entity whose components lack individual distinction.
- D Property has yielded, or is likely to yield, information important in prehistory or history.

Criteria Considerations

(Mark "x" in all the boxes that apply.)

Property is:

- A Owned by a religious institution or used for religious purposes.
- B removed from its original location.
- C a birthplace or grave.
- D a cemetery.
- E a reconstructed building, object, or structure.
- F a commemorative property.
- G less than 50 years old or achieving significance within the past 50 years.

Areas of Significance

Architecture

Period of Significance

1911

Significant Dates

1911

Significant Person

(Complete only if Criterion B is marked above.)

Cultural Affiliation

N/A

Architect/Builder

Kruger, Jacob L. (builder)

Period of Significance (justification)

The period of significance for the Jacob S. Engle House is 1911, the year the house was completed.

Criteria Considerations (justification)

N/A

Engle, Jacob S., House
Name of Property

Dickinson County, Kansas
County and State

Narrative Statement of Significance

Summary

The Jacob S. Engle House is nominated to the National Register of Historic Places under Criterion C for its local significance in the area of architecture. Replacing an earlier house that was destroyed in a 1910 fire, the Engles' new house was completed in 1911 by prolific Abilene contractor, Jacob L. Kruger. The Engle family – which at its largest included parents Jacob and Annie and their seven children, as well as a butler and maid – lived in this house from 1911 until Jacob's death in 1923. The nominated property is an excellent local example of a transitional architectural style that mixes restrained Free Classic Queen Anne and Craftsman elements.

Elaboration

Abilene History

Abilene traces its roots to the 1860s-era of cattle drives when great herds of longhorns were driven overland on the Chisholm Trail from Texas to Abilene, Kansas, which served as the western terminus of the Union Pacific Railway, Eastern Division (later known as the Kansas Pacific) beginning in 1867.¹ Town histories credit Timothy and Elizabeth Hersey as the first Euro-American settlers. They built a home along Mud Creed in 1858, and Mrs. Hersey is credited with the naming of the city, which she chose from the Bible in Luke 3:1 – the name means “city of the plains.”

The town was laid out in 1860 on land owned by C. H. Thompson, but it remained small and underdeveloped until the advancement of the railroad after the Civil War. With the arrival of cattleman and entrepreneur Joseph McCoy, who promoted Abilene as an excellent place from which to ship Texas cattle by rail, Abilene was flooded with drovers, cowboys, railroad workers, and businessmen in the late 1860s.² With over three million head of cattle passing through Abilene between 1867 and 1871, the cattle industry played an important role in the early development of the community until 1872, when the railroad opened up more railheads to Newton, Wichita, and Ellsworth. It was at this point that the cultural makeup of the community shifted away from an active cattle-focused railhead to a more refined business- and agriculture-based city.

Abilene, the seat of Dickinson county government, boasted the opening of Belle Springs Creamery in 1892, and the Parker Amusement Company opened a shop in Abilene in 1905. Belle Springs Creamery was “associated with the most prosperous period in the long history of an Abilene business first organized in 1886 as a partnership of a few farmers in the county twelve miles southeast of Abilene. After its headquarters were established in Abilene the operation grew to become the largest employer in town until business declined in the depression of the 1930s.”³ Frank Blackmar's 1912 history of Kansas noted Abilene's population at 4,118 and highlighted its continued importance as a shipping point for grain and livestock.⁴ The city's population reached as high as 8,000 in the 20th century but has remained at about 6,800 for many years.⁵

Jacob S. Engle Biography and House History

According to the earliest available county atlas from 1901, the land on which the Engle house sits was technically within the Abilene city limits by this time. This area of northern Abilene was historically a mix between residential subdivisions and large residential parcels. The land in the immediate vicinity to the west and south of Engle's house was not subdivided until after World War II, with existing houses fronting Buckeye being excluded from this so-called Duckwall

¹ The Union Pacific Railway, Eastern Division, was an independent railroad company unaffiliated with the Union Pacific Railway. To avoid confusion, the company changed its name to the Kansas Pacific in 1868. In 1880 the Kansas Pacific was incorporated into the Union Pacific Railway [Kansas Historical Society, “Union Pacific Railway,” *Kansapedia* (July 2011 & April 2013) [online database] <https://www.kshs.org/kansapedia/union-pacific-railway/17182> (accessed 13 October 2016)].

² William Cutler, *History of the State of Kansas* (Chicago: Andreas Publishing Co., 1883), n.p. [online transcription] available from Kansas Collection Books <http://www.kancoll.org/books/cutler/dickinson/dickinson-co-p5.html#ABILENE> (accessed 12 October 2016).

³ Kansas Historical Society, “Old Belle Springs Creamery and Produce Building” National Register nomination (1982): 4. The complex was listed in the National Register in 1982. It was demolished in 1999 and subsequently delisted.

⁴ Frank Blackmar, *Kansas: A cyclopedia of State History*, vol. 1 (Chicago: Standard Publishing Co., 1912), 18-19.

⁵ The 2010 Federal Census reported 6,844 residents in Abilene.

Engle, Jacob S., House

Name of Property

Dickinson County, Kansas

County and State

Addition.⁶ From 1887 to 1899 the land at the southwest corner of Buckeye and 14th Street was owned by Lewis and Mary Reed, who moved into their new house in September 1887.⁷ After her husband's death, Mary Reed sold the property to Edward and Anna Sanders in 1900, who lived here until 1909.⁸

In 1909 prominent resident of the Abilene community Jacob S. Engle purchased the Reed-Sanders property for \$7,500.⁹ Unfortunately the Reeds' 1887 house was destroyed in a fire on November 17, 1910.¹⁰ Immediately after the fire, Mr. Engle employed Jacob L. Kruger to build a new house at the same location; it was completed in 1911. Kruger owned and operated the Kruger Lumber Company located at the corner of 2nd and Broadway streets in Abilene, and census records list his occupation as a building contractor. Kruger was a successful local builder responsible for several of Abilene's early 20th century structures, including Belle Springs Creamery's new building (1902-1909) and the Carnegie Library (1905-1908).¹¹

Jacob Shelley Engle was born March 4, 1865, the son of John M. and Martha Engle, near Mt. Joy, Lancing County, Pennsylvania.¹² He was one of eight children. In 1885 at the age of 20, he came to Kansas with his parents and settled in Dickinson County where he lived until his death. He married Annie (Anna) Lindemuth March 26, 1898. When the couple moved into their new house on Buckeye, they had seven children, four daughters: Juanita (16), Viola (12), Dorothy (10), and Loine (8), and three sons: Bernace (6), John (5), and Harold (3), thus the need for so many bedrooms.¹³

Jacob was the manager of the produce department at the Belle Springs Creamery Company for many years.¹⁴ He served as a member of Abilene's Board of Education for 12 years and was president of that body for six years. During that time he signed Dwight D. Eisenhower's high school diploma.¹⁵ Jacob died June 21, 1923 and is buried in the Abilene Cemetery.

In 1925, Anna, Jacob's widow, sold the property to Christian Elmer & Mary B. Rugh.¹⁶ Christian was a prominent attorney and trial lawyer and was affectionately known as "Judge." He gained statewide prominence in Democratic political circles; served one term as a member of the Kansas Utilities Commission; served two terms as Dickinson county attorney (an office later held by his son, John); and served as general counsel for the United Companies in Abilene.¹⁷ In 1956 Oren A. & Harriett H. Glatt became the owners of the property.¹⁸ Oren was the secretary/treasurer at Long Investment Company while Harriett was a stock broker.¹⁹ In 1964 the Glatts sold to Return C. & Phyllis K. Haynes.²⁰ Return was a retired military man, later working as a salesman for KABI Inc. (the Abilene radio station), and Phyllis worked as the director of activities at the Mid America Nursing home. They lived in the house along with their children Maria and Return, Jr. Return C. "Rocky" Haynes died in 2007 at the age of 86.²¹ The ownership of the house passed on to Return and Phyllis's daughter, Maria K., and her husband, Patrick J. Kearney in 2002 when Phyllis felt she needed a smaller home.²² Though not their permanent address, Patrick and Maria stayed in the home for extended periods of time while visiting Phyllis. In 2014 the Kearneys sold the property to Scott L. and Christine C. Ostermann, the current owners.²³

⁶ Information from Dickinson County appraiser. The majority of the immediate surrounding neighborhood along Highland and Moyne drives contains house types common to the mid-20th century.

⁷ *Abilene Weekly Reflector* (April 14, 1887): 5 & (August 11, 1887): 5. The April issue states, "L.A. Reed is breaking ground for a fine residence on the corner of Buckeye avenue and Fourteenth street." The August issue reported the Reeds expected to move into their new house at the first of September.

⁸ County tax records.

⁹ Deed for property described as South parallel to east line 200 ft, thence west 150 ft, thence north 200 ft. thence east on the north line of Section 16 150 ft.

¹⁰ *Abilene Daily Chronicle* (November 17, 1910): np.

¹¹ Martha Gray Hagedorn, "A.B. Seelye House," National Register nomination (1986): 4.

¹² *Abilene Daily Reflector* (June 25, 1923), obituary for Jacob S. Engle. It is believed that Abner E. Engle, the father of astronaut Maj. Joe Engle, is a relative of Jacob.

¹³ 1910 United States Federal Census.

¹⁴ *Abilene Daily Reflector* (June 25, 1923), obituary for Jacob S. Engle.

¹⁵ Copy of Dwight D. Eisenhower diploma from The Public High School of Abilene, Kansas.

¹⁶ Deed Record dated April 29, 1925.

¹⁷ *Abilene Reflector Chronicle* (June 26, 1949), obituary for C. E. Rugh.

¹⁸ Deed Record dated 1956.

¹⁹ Abilene City Directory, 1962.

²⁰ Quit Claim Deed dated October 8, 1964.

²¹ Martin-Becker-Carlson Funeral Home correspondence.

²² Joint Tenancy Deed dated September 17, 2002.

²³ Statutory Warranty Deed dated November 24, 2014.

Engle, Jacob S., House

Name of Property

Dickinson County, Kansas

County and State

During the Glatts' ownership (1956-1964), the property address was changed to 102 Highland with the closing of the entrance to the house on Buckeye due to the high-traffic volume along this major road. It is believed that it was the Haynes who originally installed the large wooden privacy fence.

Architecture

The Jacob S. Engle House is an example of a transitional architectural style, mixing restrained Free Classic Queen Anne and Craftsman elements. Prevalent between 1880 and 1910 Queen Anne houses are identified by steeply pitched and irregular roof lines, prominent front gables, patterned shingles, bay windows, and asymmetrical facades with one-story partial- or full-width porches often wrapping side walls. After about 1890, the Free Classic subtype became popular. These houses have classical porch columns, Palladian windows, cornice-line dentils, and other classically-inspired decoration.²⁴

Towards the end of the Queen Anne style's popularity came the Craftsman movement. Popular between 1905 and 1930, this style "simplified design and removed unnecessary, ornate features," becoming symbolic with quality-built and affordable middle-class housing.²⁵ The American Craftsman style originated in southern California with brothers Greene and Greene, but pattern books and popular magazines quickly spread the aesthetic across the United States. Craftsman houses are characterized by low-pitched gable roofs with wide, open eaves; exposed roof rafters and knee braces; full or partial-width porches with battered columns; and grouped windows.²⁶ Although Craftsman's most commonly are one-story dwellings, stylistic elements are frequently found in larger houses.

Queen Anne was a prominent building style in Abilene in the 1880s and 1890s, while the first documented Craftsman dwelling was constructed in 1910.²⁷ Finished in 1911 the Engle House represents this period of transition between the elaborate Queen Anne and the simplified Craftsman styles. Neither Queen Anne nor Craftsman dominates throughout. Although not overtly Queen Anne, the overall form and some of the Engle House's details tend to suggest this common building style. These details include: two-story chamfered bay on north elevation; modified Palladian windows in the gable ends; 6-over-1 windows; modillions at gable cornices; Greek key design on eave ends and in main bathroom; and egg-and-dart molding at fireplace. Some Craftsman details are noticeable on the exterior, primarily in grouped windows and the porch design. The Craftsman style is most prominent on the interior through the boxed ceiling beams, the built-in cabinetry, the ceiling fixtures, and the stair design. Elements of both styles work together to create this example of Abilene's early 20th century residential architecture.

²⁴ Virginia Savage McAlester, *A Field Guide to American Houses*, Second Edition (New York: Alfred A. Knopf, 2013), 345-346.

²⁵ Merrifield, Kelly, Justin Kockritz, and Kim Gant, *Craftsman-Style Dwellings of Emporia, Lyon County, Kansas, 1900-1930* multiple property nomination (Topeka: KSHS, 2014), E-7.

²⁶ McAlester, *A Field Guide to American Houses*, 567-568.

²⁷ Based on information found at the Kansas Historic Resources Inventory, kshs.org/khri

Engle, Jacob S., House
Name of Property

Dickinson County, Kansas
County and State

9. Major Bibliographical References

Bibliography (Cite the books, articles, and other sources used in preparing this form.)

Abilene City Directory, 1962.

Abilene Daily Chronicle (November 17, 1910).

Abilene Daily Reflector (June 25, 1923).

Abilene Reflector Chronicle (June 26, 1949).

Abilene Weekly Reflector (April 14, 1887) & (August 11, 1887).

Blackmar, Frank. *Kansas: A cyclopedia of State History*. Vol. 1. Chicago: Standard Publishing Co., 1912.

Cutler, William. *History of the State of Kansas*. Chicago: Andreas Publishing Co., 1883.

Dickinson County Historical Society Records

Dickinson County Tax Records

Dickinson County Register of Deeds Records

Hagedorn, Martha Gray. "A.B. Seelye House." National Register nomination. 1986.

Kansas Historical Society. "Old Belle Springs Creamery and Produce Building." National Register nomination. 1982.

Kansas Historical Society. "Union Pacific Railway." *Kansapedia* (July 2011 & April 2013) [online database]
<https://www.kshs.org/kansapedia/union-pacific-railway/17182> (accessed 13 October 2016).

Martin-Becker-Carlson Funeral Home correspondence.

McAlester, Virginia Savage. *A Field Guide to American Houses*. Second Edition. New York: Alfred A. Knopf, 2013.

Merrifield, Kelly, Justin Kockritz, and Kim Gant. *Craftsman-Style Dwellings of Emporia, Lyon County, Kansas, 1900-1930*
multiple property nomination. Topeka: KSHS, 2014.

Property Deeds

United States Federal Census, 1910, 2010.

Previous documentation on file (NPS):

preliminary determination of individual listing (36 CFR 67 has been requested)
 previously listed in the National Register
 previously determined eligible by the National Register
 designated a National Historic Landmark
 recorded by Historic American Buildings Survey # _____
 recorded by Historic American Engineering Record # _____
 recorded by Historic American Landscape Survey # _____

Primary location of additional data:

State Historic Preservation Office
 Other State agency
 Federal agency
 Local government
 University
 Other

Name of repository: Kansas Historical Society

Historic Resources Survey Number (if assigned): _____ N/A _____

Engle, Jacob S., House
Name of Property

Dickinson County, Kansas
County and State

10. Geographical Data

Acreeage of Property Less than 1

Provide latitude/longitude coordinates OR UTM coordinates.

(Place additional coordinates on a continuation page.)

Latitude/Longitude Coordinates

Datum if other than WGS84: _____

(enter coordinates to 6 decimal places)

1	<u>38.929430</u>	<u>-97.214370</u>	3	_____	_____
	Latitude:	Longitude:		Latitude:	Longitude:
2	_____	_____	4	_____	_____
	Latitude:	Longitude:		Latitude:	Longitude:

Verbal Boundary Description (describe the boundaries of the property)

S16, T13, R02, BEG 40' W & 50' S NE COR NW4, S 150', W 150', N 150', E TO POB, LESS R/W.

Boundary Justification (explain why the boundaries were selected)

The nominated property includes the property historically associated with the Engle House.

11. Form Prepared By

name/title Nanc Scholl with Amanda K. Loughlin (KSHS)
organization _____ date July 2016
street & number 813 N Olive St telephone (785) 263-70112
city or town Abilene state KS zip code 67410
e-mail abileneresearcher@yahoo.com

Property Owner: (complete this item at the request of the SHPO or FPO)

name Scott and Chris Ostermann
street & number 102 Highland Dr. telephone (785) 263-0453
city or town Abilene state KS zip code 67410

Paperwork Reduction Act Statement: This information is being collected for applications to the National Register of Historic Places to nominate properties for listing or determine eligibility for listing, to list properties, and to amend existing listings. Response to this request is required to obtain a benefit in accordance with the National Historic Preservation Act, as amended (16 U.S.C.460 et seq.).

Estimated Burden Statement: Public reporting burden for this form is estimated to average 100 hours per response including time for reviewing instructions, gathering and maintaining data, and completing and reviewing the form. Direct comments regarding this burden estimate or any aspect of this form to the Office of Planning and Performance Management, U.S. Dept. of the Interior, 1849 C. Street, NW, Washington, DC.

Engle, Jacob S., House
Name of Property

Dickinson County, Kansas
County and State

Additional Documentation

Submit the following items with the completed form:

Photographs

Submit clear and descriptive photographs. The size of each digital image must be 1600x1200 pixels (minimum), at 300 ppi (pixels per inch) or larger. Key all photographs to a sketch map or aerial map. Each photograph must be numbered and that number must correspond to the photograph number on the photo log. For simplicity, the name of the photographer, photo date, etc. may be listed once on the photograph log and doesn't need to be labeled on every photograph.

Photograph Log

Name of Property: Engle, Jacob S., House

City or Vicinity: Abilene

County: Dickinson State: Kansas

Photographer: Nanc Scholl (NS) & Amanda K. Loughlin (KSHS)

Date
Photographed: May 2016 (NS) & September 2016 (KSHS)

Description of Photograph(s) and number, include description of view indicating direction of camera:

- 01 of 14: Looking NW from SE corner of parcel at south and east elevations
- 02 of 14: South elevation
- 03 of 14: Looking NE at west elevation
- 04 of 14: Looking SE from NW corner of parcel at north and west elevations
- 05 of 14: Main level, foyer, looking NE (NS)
- 06 of 14: Main level, foyer, looking NW at stair detail (NS)
- 07 of 14: Main level, formal parlor, looking west into back parlor
- 08 of 14: Main level, dining room, looking north (NS)
- 09 of 14: Main level, dining room, looking SW, showing glass sliding door at left and built-ins at right
- 10 of 14: Main level, Butler's pantry, looking south (NS)
- 11 of 14: Second level, southeast bedroom, looking west
- 12 of 14: Second level, historic bathroom, looking north into room and showing tilework (NS)
- 13 of 14: Attic, looking north from center of open space at historic water tank
- 14 of 14: Garage, east elevation (NS)

Figures

Include GIS maps, figures, scanned images below.

Engle, Jacob S., House
Name of Property

Dickinson County, Kansas
County and State

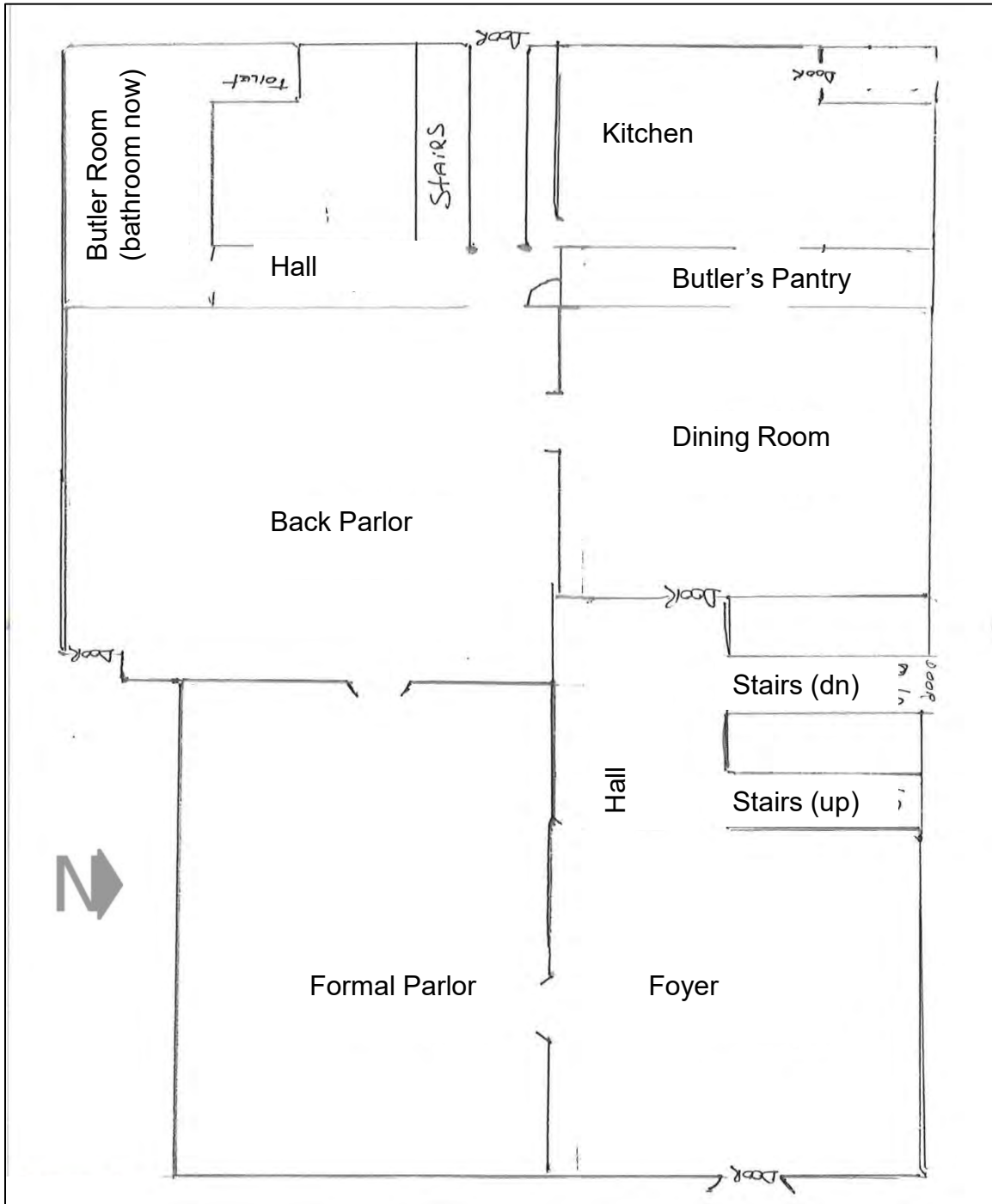
Figure 2. ca. 2015 Aerial image of Engle House parcel from Dickinson County GIS.



Engle, Jacob S., House
Name of Property

Dickinson County, Kansas
County and State

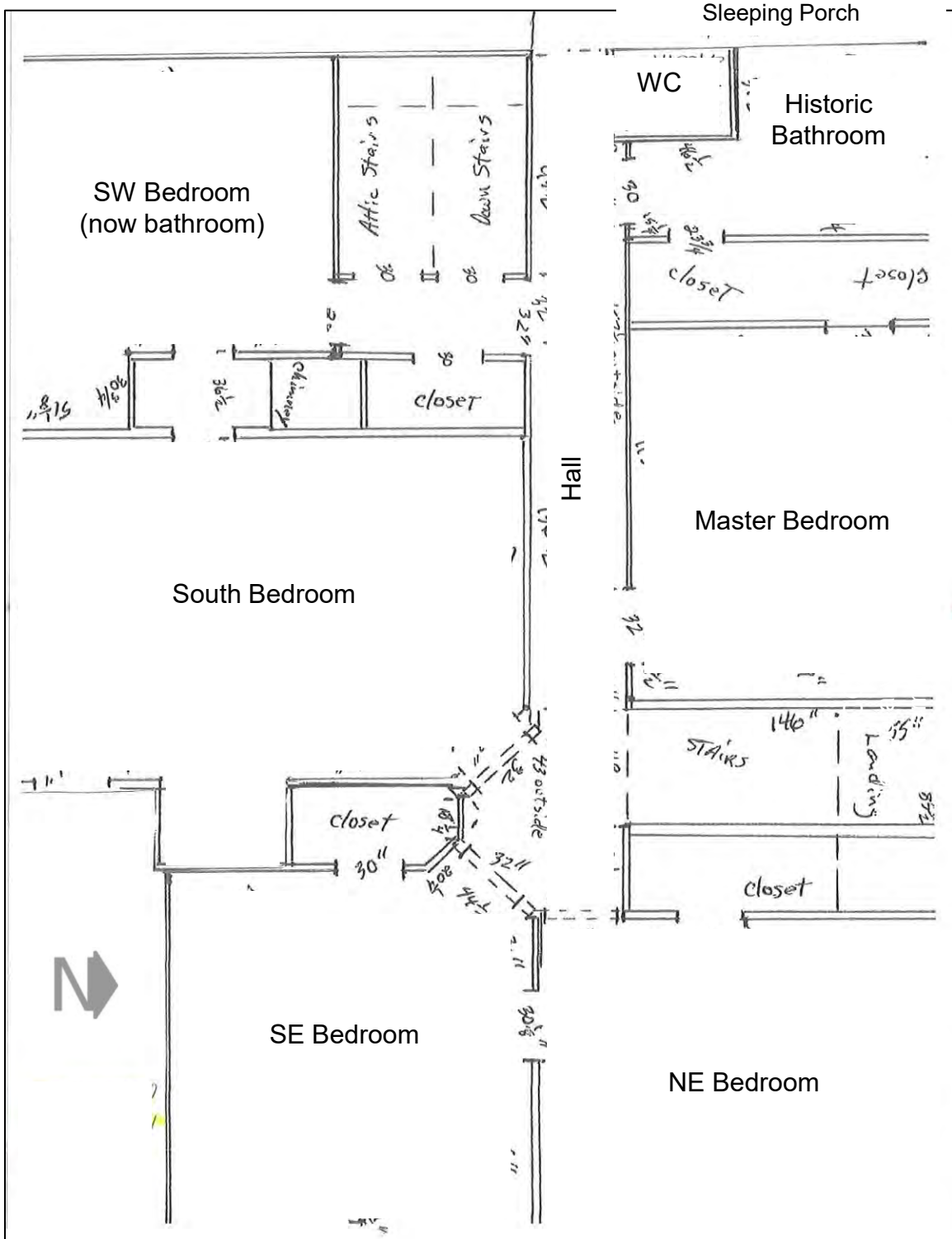
Figure 3. Sketch plan of main level. No scale.



Engle, Jacob S., House
Name of Property

Dickinson County, Kansas
County and State

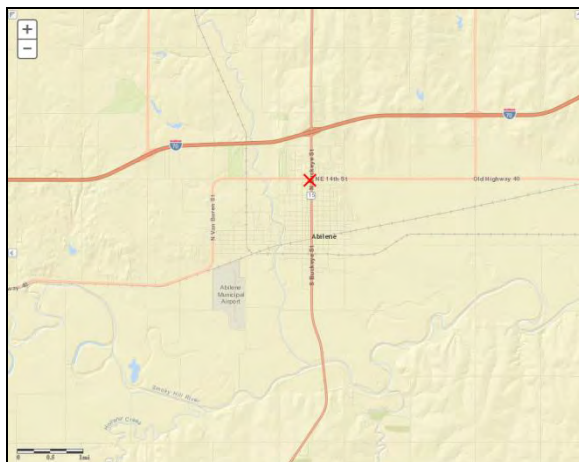
Figure 4. Sketch plan of second level. No scale.



Engle, Jacob S., House
Name of Property

Dickinson County, Kansas
County and State

Boundary Map. The nominated site is defined by the parcel boundaries.
Contextual map shown below with X marking location of house.

















PROPERTY OF
D. WASHINGTON
SPANNING















UNITED STATES DEPARTMENT OF THE INTERIOR
NATIONAL PARK SERVICE

NATIONAL REGISTER OF HISTORIC PLACES
EVALUATION/RETURN SHEET

Requested Action:

Property Name:

Multiple Name:

State & County:

Date Received: 12/2/2016 Date of Pending List: 12/27/2016 Date of 16th Day: 1/11/2017 Date of 45th Day: 1/17/2017 Date of Weekly List: 1/17/2017

Reference number:

Nominator:

Reason For Review:

- | | | |
|---------------------------------------|--|---|
| <input type="checkbox"/> Appeal | <input type="checkbox"/> PDIL | <input type="checkbox"/> Text/Data Issue |
| <input type="checkbox"/> SHPO Request | <input type="checkbox"/> Landscape | <input checked="" type="checkbox"/> Photo |
| <input type="checkbox"/> Waiver | <input type="checkbox"/> National | <input type="checkbox"/> Map/Boundary |
| <input type="checkbox"/> Resubmission | <input type="checkbox"/> Mobile Resource | <input type="checkbox"/> Period |
| <input type="checkbox"/> Other | <input type="checkbox"/> TCP | <input type="checkbox"/> Less than 50 years |
| | <input type="checkbox"/> CLG | |

Accept Return Reject 1/11/2017 Date

Abstract/Summary Comments:

Recommendation/ Criteria:

Reviewer Alexis Abernathy Discipline Historian

Telephone (202)354-2236 Date _____

DOCUMENTATION: see attached comments : No see attached SLR : No

If a nomination is returned to the nomination authority, the nomination is no longer under consideration by the National Park Service.

NOV 21 2016



Dwight D. Eisenhower Municipal Building
419 N. Broadway Street, PO Box 519
Abilene, KS 67410
www.abilenecityhall.com
Phone: (785) 263-2550
Fax: (785) 263-2552

November 19, 2016

Kansas Historical Society
Kansas Historic Sites Board of Review
Attn: Jennie Chinn
6425 SW 6th Avenue
Topeka, KS 66615

RE: Engle, Jacob S. House (102 Highland Drive, Abilene, Dickinson County)

Kansas Historic Board of Review:

The City of Abilene supports the nomination of the Engle House by the Kansas Historic Sites Board of Review for inclusion on the National Register of Historic Places and the Register of Historic Kansas Places.

The Engle House, owned by Scott and Chris Ostermann, is an excellent example of a 1911 style home that mixes the Free Classic Queen Anne and Craftsman elements. The house has changed little since its original construction, and is now being operated as a bed and breakfast.

As you will see in the nomination form, the Engle House has much to offer in historic preservation of a fine residential structure that harkens to the gilded age in American history.

The City Commission, on behalf of the citizens of the City of Abilene, Kansas, respectfully supports your nomination of the Jacob S. Engle House to both the National Register of Historic Places and the Register of Historic Kansas Places.

Sincerely,

A handwritten signature in cursive script, appearing to read "Dee Marshall".

Dee Marshall, Mayor



Home of the Eisenhower Presidential Library, Museum and Boyhood Home
End of the Historic Chisholm Trail



RECEIVED

OCT 31 2016

Voice: 785.263.2355
Fax: 785.263.3148
www.abilencecityhall.com

Community Development Department
Dwight D. Eisenhower Municipal Building
419 N. Broadway, PO Box 519
Abilene, Kansas 67410

October 27, 2016

Kansas Historical Society
Attn: Jennie Chinn
6425 SW 6th Avenue
Topeka, Kansas 66615

Re: Engle, Jacob S., House Nomination

Dear Historic Sites Board of Review,

On October 20, 2016 the City of Abilene Heritage Commission met to review the nomination to place the Engle House, 102 Highland Drive on the National Register of Historic Places and the Register of Historic Kansas Places. Upon review, the Heritage Commission unanimously expressed their support for the nomination.

We are anticipating your consideration on November 19, 2016 and greatly appreciate your recommendation of this valuable historic asset to both the National and Kansas Registers of Historic Places.

Should you have any questions please contact Jennie Hiatt, Community Development Administrative Assistant, at 785-263-2355 or at developclk@abilenecityhall.com.

Sincerely,

David B. Dillner
Interim Community Development Director

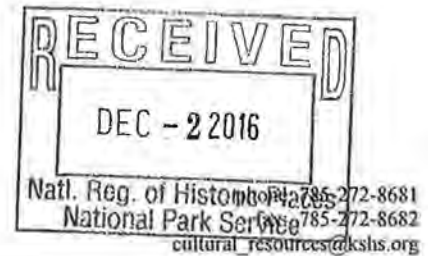
Cc: Scott & Chris Ostermann
File

Home of the Eisenhower Presidential Library and Museum





6425 SW 6th Avenue
Topeka KS 66615



Sam Brownback, Governor
Jennie Chinn, Executive Director

November 21, 2016

Paul Loether, National Register Chief
National Register of Historic Places
National Park Service
1201 Eye Street, NW (2280)
Washington, DC 20005

Re: National Register documents

Dear Mr. Loether:

Please find enclosed the following National Register documents:

- **Arvonia Township Hall, Lebo vicinity, Osage County, Kansas (new nomination)**
 - Physical, signed copy of the nomination's first page;
 - 1 CD (disk #1) with a PDF of the true and correct copy of the nomination;
 - 1 CD (disk #2) with photographs
- **Leonard , J.T., & Anna, House; Girard, Crawford County, Kansas (new nomination)**
 - Physical, signed copy of the nomination's first page;
 - 1 CD (disk #1) with a PDF of the true and correct copy of the nomination and .kmz file;
 - 1 CD (disk #2) with photographs
- **Eskridge City Park & Bandstand, Eskridge, Wabaunsee County, Kansas (resubmission)**
 - Physical, signed copy of the nomination's first page;
 - 1 CD (disk #1) with a PDF of the true and correct copy of the nomination, copy of city (owner) support, copy of letter from Alexis Abernathy recommending a resubmission and .kmz file;
 - 1 CD (disk #2) with photographs
- **Olathe Cemetery, Olathe, Johnson County, Kansas (new nomination)**
 - Physical, signed copy of the nomination's first page;
 - 1 CD (disk #1) with a PDF of the true and correct copy of the nomination and .kmz file;
 - 1 CD (disk #2) with photographs
- **Engle, Jacob S., House, Abilene, Dickinson County, Kansas (new nomination)**
 - Physical, signed copy of the nomination's first page;
 - 1 CD (disk #1) with a PDF of the true and correct copy of the nomination, copies of letters of support from the city of Abilene (2)
 - 1 CD (disk #2) with photographs

- **Hoffman & Lamb Buildings, Enterprise, Dickinson County, Kansas (new nomination)**
 - Physical, signed copy of the nomination's first page;
 - 1 CD (disk #1) with a PDF of the true and correct copy of the nomination;
 - 1 CD (disk #2) with photographs

- **Lander's Wagon & Carriage Shop, Humboldt, Allen County, Kansas (new nomination)**
 - Physical, signed copy of the nomination's first page;
 - 1 CD (disk #1) with a PDF of the true and correct copy of the nomination;
 - 1 CD (disk #2) with photographs

- **Grand Army of the Republic (GAR) Memorial Arch, Junction City, Geary County, Kansas (new nomination)**
 - Physical, signed copy of the nomination's first page;
 - 1 CD (disk #1) with a PDF of the true and correct copy of the nomination;
 - 1 CD (disk #2) with photographs

- **Reid, Lyman, House; Ottawa, Franklin County, Kansas (new nomination)**
 - Physical, signed copy of the nomination's first page;
 - 1 CD (disk #1) with a PDF of the true and correct copy of the nomination;
 - 1 CD (disk #2) with photographs

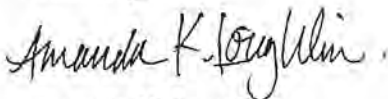
- **Kansas Route 66 Historic District – North Baxter Springs; Riverton & Baxter Springs vicinities, Cherokee County, Kansas (boundary expansion; additional documentation)**
 - Physical, signed copy of the nomination's first page;
 - 1 CD (disk #1) with a PDF of the true and correct copy of the nomination and .kmz file;
 - 1 CD (disk #2) with photographs

- **Beckett, Charles K., House, Sterling, Rice County, Kansas (removal request)**
 - Physical, signed copy of the removal request;
 - 1 CD (disk #1) with a PDF of the true and correct copy of the removal request;
 - 1 CD (disk #2) with photograph

- **Spring Creek School, Corbin vicinity, Sumner County, Kansas (removal request)**
 - Physical, signed copy of the removal request's first page;
 - 1 CD (disk #1) with a PDF of the true and correct copy of the removal request;
 - 1 CD (disk #2) with photographs

If you have any questions about these enclosed items, please contact me at 785-272-8681 ext. 216 or aloughlin@kshs.org.

Sincerely,



Amanda K. Loughlin
National Register Coordinator

Enclosures