



1950
FORD MOTOR COMPANY
ROUGE COMPLEX
DEARBORN, MICHIGAN
AERIAL PHOTOGRAPH
BY THE NATIONAL AERONAUTICS AND SPACE ADMINISTRATION
GPO : 1950 O - 288-000

Plant Engineering Office, Ford Motor Company, at intervals of two or three years, has an extensive series of aerial photographs taken, of the Rouge Complex and other major buildings. These become part of the Company's permanent records. This was taken in 1975.



FORD RIVER ROUGE COMPLEX
PHOTO CREDIT: AASLH

Ford River Rouge Complex
3001 Miller Road
Dearborn, Michigan

Photo No. 2

By: Ralph J. Christian, AASLH
Negative at: Historic Sites Survey
Date: February, 1977

View: From south, showing south end
of Dearborn Assembly Plant
(Building B).



FORD RIVER ROUGE COMPLEX
PHOTO CREDIT: AASLH

Ford River Rouge Complex

3001 Miller Road

Dearborn, Michigan

Photo No. 3

Courtesy: Ford Motor Company

View: Automobile assembly process
in Dearborn Assembly Plant (Building
B) circa 1973.



975

FORD RIVER ROUGE

Ford River Rouge Complex
3001 Miller Road
Dearborn, Michigan

Photo No. 4
Courtesy: Ford Motor Company

View: Automobile assembly line in
Dearborn Assembly Plant (Building B)
circa 1973.



FORD RIVER ROUGE COMPLEX
PHOTO CREDIT: AASLH

Ford River Rouge Complex
3001 Miller Road
Dearborn, Michigan

Photo No. 5

By: Ralph J. Christian, AASLH
Negative at: Historic Sites Survey
Date: February, 1977

View: From west, showing portion of
west facade of Glass Plant.

FORD RIVER ROUGE COMPLEX
PHOTO CREDIT: AASLH



Ford River Rouge Complex
3001 Miller Road
Dearborn, Michigan

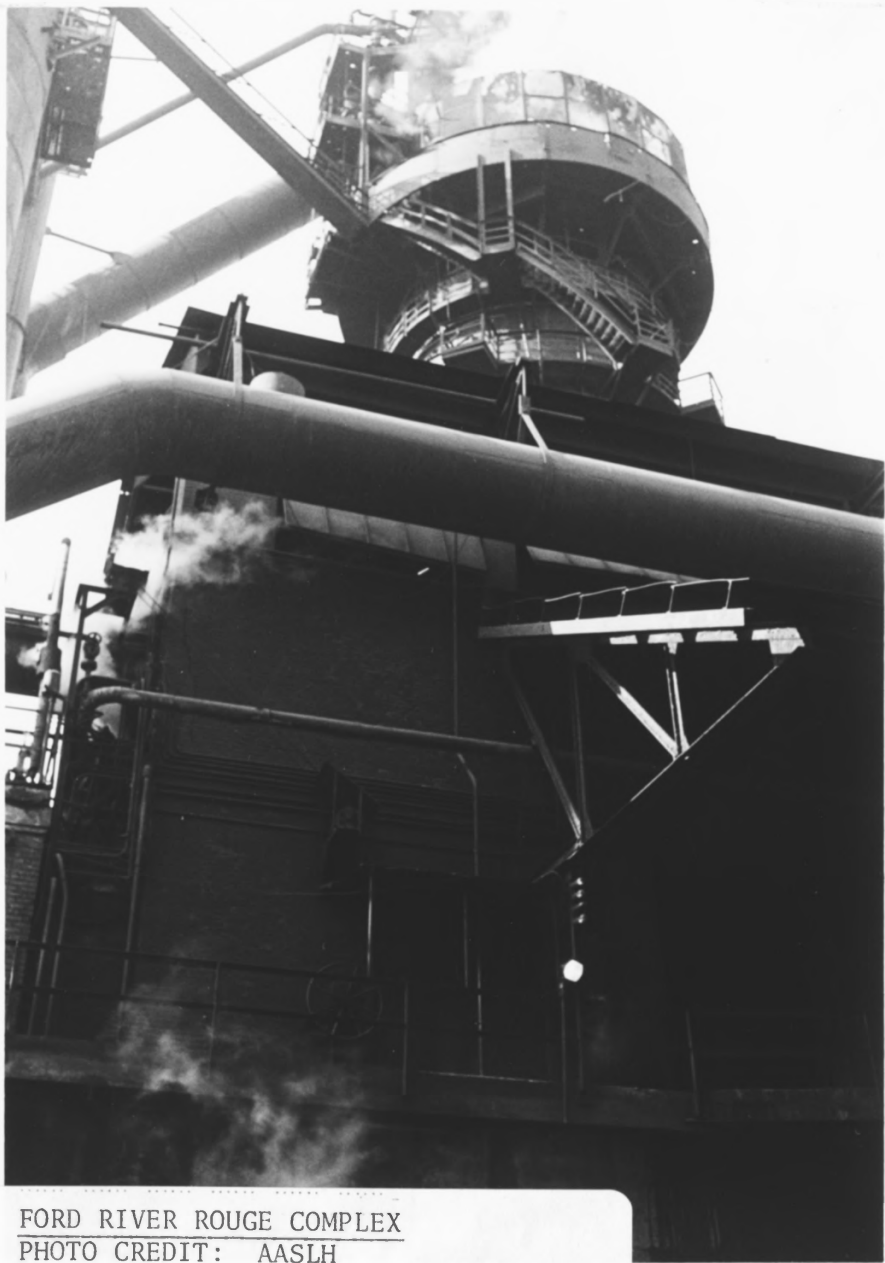
Photo No. 6

By: Ralph J. Christian, AASLH

Negative at: Historic Sites Survey

Date: February, 1977

View: From east, showing east
facade of Power House.



FORD RIVER ROUGE COMPLEX
PHOTO CREDIT: AASLH

Ford River Rouge Complex
3001 Miller Road
Dearborn, Michigan

Photo No. 7

By: Ralph J. Christian, AASLH

Negative at: Historic Sites Survey

Date: February, 1977

View: From east, showing facade of
Henry Ford II Blast Furnace (Blast
Furnace A).



FORD RIVER ROUGE COMPLEX
PHOTO CREDIT: AASLH

Ford River Rouge Complex
3001 Miller Road
Dearborn, Michigan

Photo No. 8

By: Ralph J. Christian, AASLH
Negative at: Historic Sites Survey
Date: February, 1977

View: From east, showing east
facade of Dearborn Iron Foundry.



FORD RIVER ROUGE COMPLEX
PHOTO CREDIT: AASLH

Ford River Rouge Complex
3001 Miller Road
Dearborn, Michigan

Photo No. 9

By: Ralph J. Christian, AASLH

Negative at: Historic Sites Survey

Date: February, 1977

View: From east, showing portion of
east facade of Steel Mill Plant.