



B-5058

South Central Avenue Historic District

Baltimore City, MD

Julie Darsie / Betty Bird & Assoc.

1101

MD SHPO

South Central Ave., looking south from Pratt St.

#1/43



B-5058

South Central Avenue Historic District

Baltimore City, MD

Julie Darse / Betty Bird & Assoc.

1101

MD SHPO

1000 Block East Pratt St., View SW

#2/43



B-5058

South Central Avenue Historic District
Baltimore, MD

Julie Darsie / Betty Bird & Assoc.

1101

MD SHPO

1001-1005 East Pratt St., NW corner

#9/43



B-5058

South Central Avenue Historic District

Baltimore, MD

Julie Darsie / Betty Bird & Assoc.

1101

MD SHPO

Baltimore Traction Company Powerhouse (1142 E. Pratt St.)

SW corner

#41/43



B-5058

South Central Avenue Historic District

Baltimore, MD

Julie Darsic/Betty Bird & Assoc.

1/01

MD SHPO

Baltimore Traction Company Powerhouse (1142 E. Pratt St)

SE Corner

45/43

NO
LEFT TURN



B-5058

South Central Avenue Historic District

Baltimore City, MD

Julie Daise / Betty Bird & Assoc.

1101

MD SHPO

122-124 S. Central Ave., East elevation

#6/43



B-5058

South Central Avenue Historic District

Baltimore City, MD

Julie Darsie / Betty Bird & Assoc.

1101

MD SHPO

Joseph Kavanaugh Coppersmith Co. (201-205 S. Central Ave)

NW corner

#9/43



B-5058

South Central Avenue Historic District

Baltimore City, MD

Julie Darsie / Betty Bird & Assoc.

1101

MD SHPO

Storefront at 1307 E. Pratt St., north elevation

8086

#8/43



B-5058

South Central Avenue Historic District
Baltimore City, MD

Julie Darsie / Betty Bird & Assoc.

1101

MD SHPO

200-225 S. Central Ave., west elevations

#9/43



B-8058

South Central Avenue Historic District
Baltimore City, MD

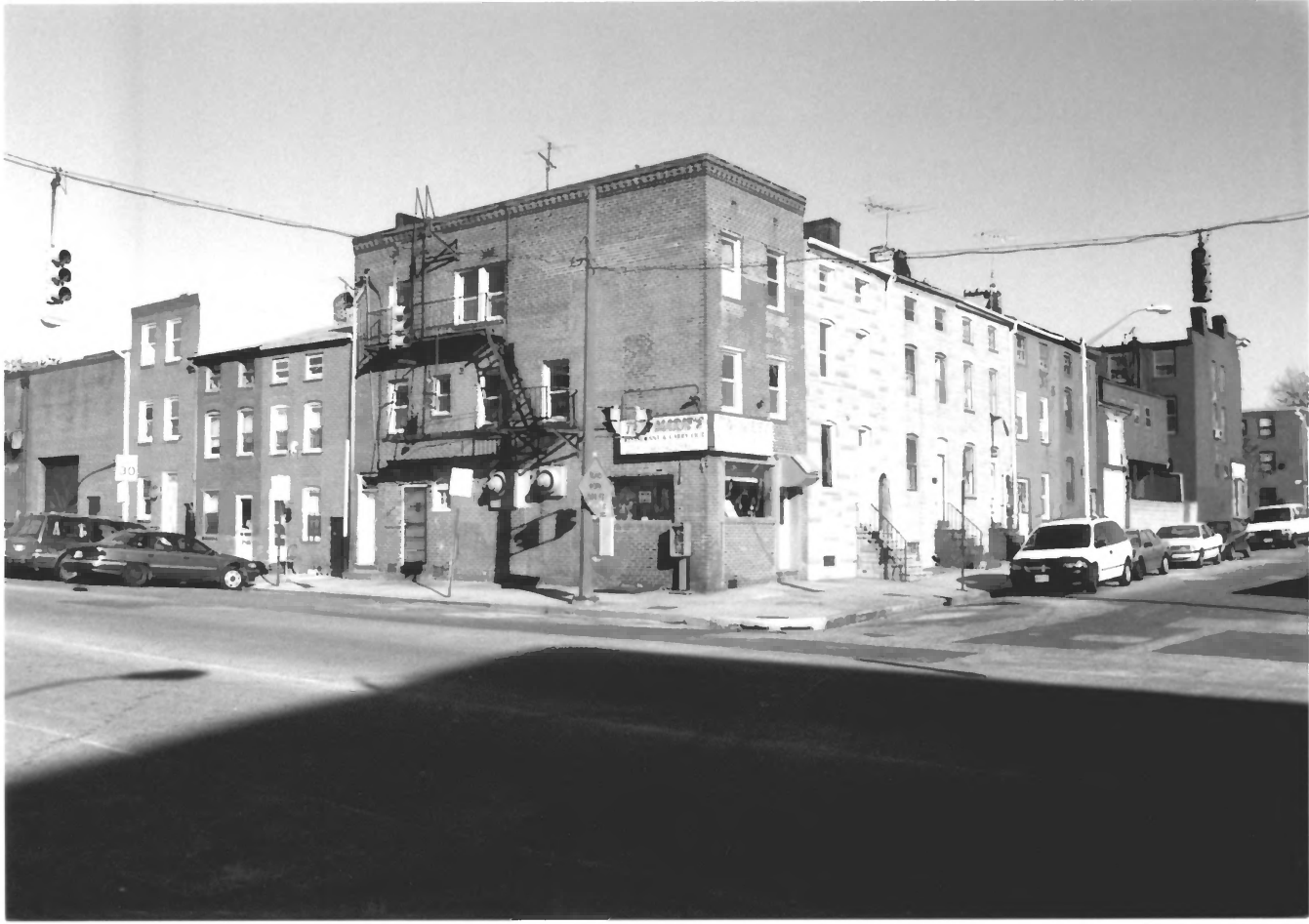
Julie Darsie / Betty Bird & Assoc.

1101

MD/SHPO

Startzman Tannery complex (227 S. Central Ave), west elevations

#10/43



B-5058

South Central Avenue Historic District

Baltimore City, MD

Julie Daisie / Betty Bird & Assoc.

1/01

MD SHPO

1300 block Gough St. and 200 block S. Central Ave.
looking NE

#11/43



B-5058

South Central Avenue Historic District

Baltimore City, MD

Julie Darsiel Betty Bird & Assoc.

1101

MD SHPO

P.S. #2 (Alameda School), south elevation

#12/43



B-5058

South Central Avenue Historic District
Baltimore, MD

Julie Darsiel Betty Bird & Assoc.

1/01

MD SHPO

300 S. Central Ave and 302 S. Central Ave.
(Solomon Strauss Malt House), View SW

810

#13/43



B-8058

South Central Avenue Historic District

Baltimore City, MD

Julie Darsie | Betty Bird & Assoc.

1101

MD SHPO

300 S. Central Ave., 1022-1024 Gough St., north elevations

#14/53



B-5058

South Central Avenue Historic District

Baltimore, City, MD

Julie Darsiel Betty Bird & Assoc.

1101

MD SHPO

300 S. Central Ave., 1022-1024 Gough St., south elevations

#15/43



B-5058

South Central Avenue Historic District

Baltimore City, MD

Julie Darsie / Betty Bird & Assoc

1101

MD SHPO

Solomon Strauss Malt House (302 S. Central Ave.)

North elevation

#16/43



B-5058

South Central Avenue Historic District

Baltimore City, MD

Julie Darsie / Betty Bird & Assoc.

1101

MD SHPO

Solomon Strauss Malt House (302 S. Central Ave.)

SE Corner

#17/43



B-5058

South Central Avenue Historic District
Baltimore City, MD

Julie Darsie | Betty Bird & Assoc.

1101

MD SHPO

Solomon Strauss Malt House (302 S. Central Ave)
with motor freight depot in foreground,
south elevation

#18/43



302

302

1200

B-5058

South Central Avenue Historic District
Baltimore, MD

Julie Darsie / Betty Bird & Assoc.

1101

MD SHPO

Solomon Strauss Malt House (302 S. Central Ave.)
entry detail

#19/43



B-5058

South Central Avenue Historic District

Baltimore City, MD

Julie Darsie | Betty Bird & Assoc.

1101

MD SHPO

1200 block of Bank St., looking NW from S. Central Ave.

#20/43



B-5058

South Central Avenue Historic District

Baltimore City, MD

Julie Darsie / Betty Bird & Assoc.

1/01

MD SHPO

1200 block of Bank St., looking NE from Exeter St.

21/43



Mazzilli's Son
ITALIAN BAKERY

B-8058

South Central Avenue Historic District
Baltimore City, MD

Julie Darsiel Betty Bird & Assoc.

1101

MD SHPO

305-321 S. Central Ave., west elevations

#22/43



FOR SALE
410.363.9500

FOR SALE
410.363.9500

THE HOLLAND MFG. COMPANY

B-5058

South Central Avenue Historic District
Baltimore City, MD

Julie Daisie / Betty Bird & Assoc.

1101

MD SHPO

Holland Manufacturing Company (1300-1306 Bank St.)
SW corner

#23/43

ABC RADIATOR

ABC RADIATOR



B-5058

South Central Avenue Historic District
Baltimore City, MD

Julie Darsie / Betty Bird & Assoc.

1/01

MD SHPO

401-405 S. Central Ave., NW corner

#24/43



FALLSWAY SEWING CO.

FALLSWAY SEWING CO.
SPRING, CALIF.

30

B-5058

South Central Avenue Historic District
Baltimore City, MD

Julie Darsie I. Betty Bird & Assoc.

1101

MD SHPO

421-445 South Central Avenue, west elevations

#25/43



B-5058

South Central Avenue Historic District
Baltimore City, MD

Julie Darsie | Betty Bird & Assoc.

1/01

MD SHPO

1307-1311 Eastern Ave., N. Elev.

#27/43



e Enterprise
1 800 rent-a-car

B-5058

South Central Avenue Historic District
Baltimore, MD

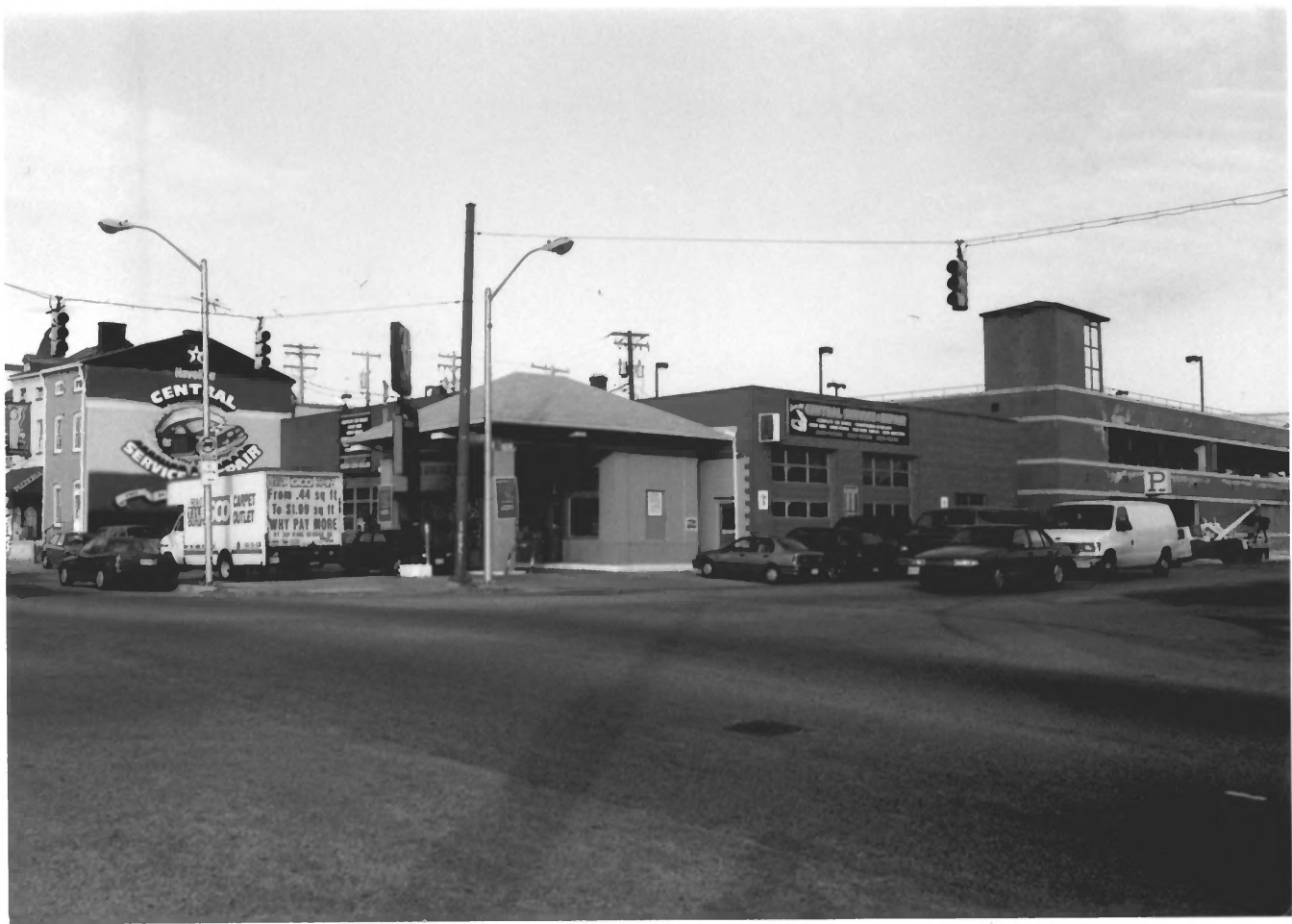
Julie Darsie | Betty Bird & Assoc.

1101

MD SHPO

1030 Eastern Avenue, SE corner

#28/43



B-5058

South Central Avenue Historic District

Baltimore City, MD

Julie Darsie | Betty Bird & Assoc.

1/01

MD SHPO

1307-1311 Eastern Ave., N. Elev.

#27/43



B-5058

South Central Avenue Historic District
Baltimore City, MD

Julie Darsie / Betty Bird & Assoc.

1101

MD SHPO

~~South~~ Central Ave., looking north from Eastern Ave.
of

2006 291001 9- 2209

#29/43



B-5058

South Central Avenue Historic District

Baltimore City, MD

Julie Darsie / Betty Bird & Assoc.

1101

MD SHPO

506 S. Central Avenue, south and east elevations

#30/43



BAGBY FURNITURE CO.

BAGBY FURNITURE CO.

BAGBY FURNITURE CO.

BAGBY FURNITURE CO.

B-~~5058~~

South Central Avenue Historic District

Baltimore City, MD

Julie Darsiel Betty Bird & Assoc.

1101

MD SHPO

Bagby Furniture Building (503-517 S. Exeter St.) SW Corner

31/43



B-8058

South Central Avenue Historic District

Baltimore City, MD

Julie Darsie | Betty Bird & Assoc.

1101

MD SHPO

200-230 South Eden Street, east elevations

#32/43



B-5058

South Central Avenue Historic District
Baltimore City, MD

Julie Darsie | Betty Bird & Arzac.

1/01

MD SHPO

SE Corner Eden & Gough Sts, looking NW

#33/43



B-5058

South Central Avenue Historic District
Baltimore, MD

Julie Darsie / Betty Bird & Assoc.

1101

MD SHPO

310-314 S. Eden St., east elevations

#34/43



B-5058

South Central Avenue Historic District

Baltimore, MD

Julie Darse, Betty Bird & Assoc.

1101

MD SHPO

1401-1417 Bank St., north elevations

#33/43



B-5058

South Central Avenue Historic District
Baltimore City, MD

Julie Darsie | Betty Bird & Assoc.

1/01

MD SHPO

405-407 South Eden St., SW Corner

#36/43



SUPERIOR
FOR SALE
Tom Anderson • 416.837.0700 x331

CASH

B-5058

South Central Avenue Historic District
Baltimore City, MD

Julie Darsie / Betty Bird & Assoc

1101

MD SHPO

415-427 S. Eden St., West Elevations

#37/43



B-5058

South Central Avenue Historic District
Baltimore City, MD

Julie Darsie / Betty Bird & Assoc.

1101

MD SHPO

Wesleyan Home Missionary Society (4400 Eastern Ave)
West Elevation

#38/43



B-5058

South Central Avenue Historic District
Baltimore, MD

Julie Darsie | Betty Bird & Assoc.

1101

MD SHPO

400-432 S. Eden St., east elevations

39/43



Clark's Automotive
Full Service Center
410-732-3346

Clark's Automotive
Full Service Center
410-732-3346

Oil & Grease
Tires & Brakes
Auto Wash

BRAKES

WAXING

B-5058

South Central Avenue Historic District

Baltimore City, MD

Julie Darsie / Betty Bird & Assoc.

1101

MD SHPO

SE Corner, Eastern Ave. & S. Eden St., looking NW

40/43



B-5058

South Central Avenue Historic District

Baltimore City, MD

Julie Darsie / Betty Bird & Assoc.

1101

MD SHPO

S. Eden St. looking north from Fleet St.
showing cobblestones and railroad tracks

#41/47



B-5058

South Central Avenue Historic District

Baltimore City, MD

Julie Darsie / Betty Bird & Assoc.

1/01

MD SHPO

P.S. #25 (410-420 S. Caroline St.), east (front) and
south elevations

#42/43



B-5058

South Central Avenue Historic District
Baltimore City, MD

Julie Darse | Betty Bird & Assoc.

1101

MD SHPO

Coal chute on P.S. # 25 (410-420 S. Caroline St)

43 | 43