

Original Newburgh District
National Register
Douglas L Stern, 604 Adams
Avenue, Evansville, IN 47713

1. 01 November 1982
General view of Newburgh,
looking N from Kentucky.



Original Newburgh District
National Register

Douglas L Stern, 604 Adams
Ave, Evansville, Ind 47713

2. 29 Aug 1982

22 West Water, looking NE;
negative intrusion.



Original Newburgh District
National Register
Douglas L Stern, 604 Adams
Ave, Evansville, Ind 47713
3. 29 August 1982
West Water, north side, view
looking NE



Original Newburgh District

National Register

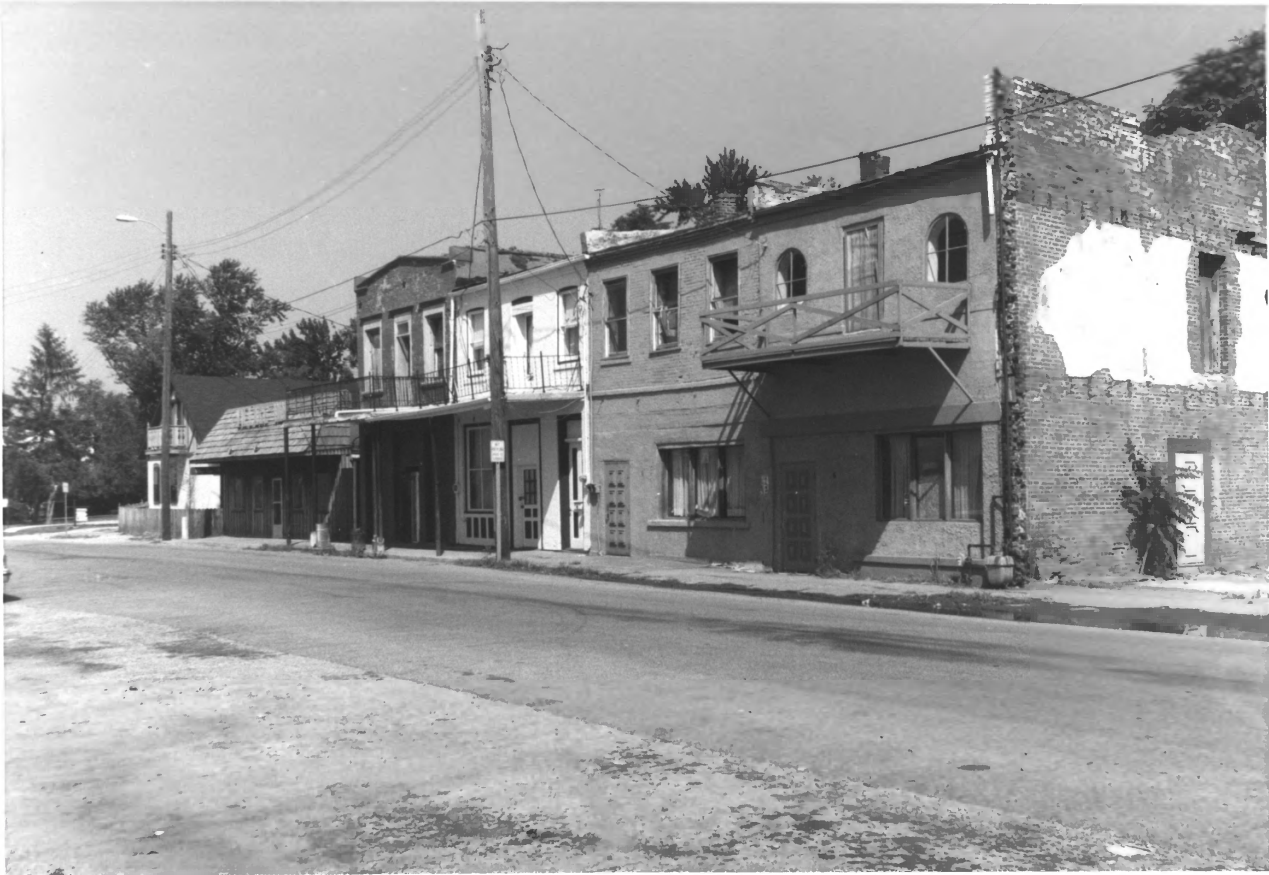
Douglas L Stern, 604 Adams

Ave, Evansville, Ind 47713

4• 29 August 1982

14 West Water, view looking

N•



Original Newburgh District

National Register

Douglas L Stern, 604 Adams

Ave, Evansville, Ind 47713

5. 29 Aug 1982

W Water Street, north side,

view looking NW from State

Street.



Original Newburgh District
National Register

Douglas L Stern, 604 Adams
Ave, Evansville, Ind 47713

6. 29 Aug 1982

2 East Water, view looking
NE.



Original Newburgh District
National Register
Douglas L Stern, 604 Adams
Ave, Evansville, Ind 47713
7. 29 Aug 1982
2, 6, and 8 East Water (l-r),
looking NE.



Original Newburgh District
National Register
Douglas L Stern, 604 Adams
Ave, Evansville, Ind 47713
8. 29 August 1982
Water Street, general view
looking W, from 12 East Water
Street.



Original Newburgh District
National Register
Douglas L Stern, 604 Adams
Ave, Evansville, Ind 47713
9. 29 Aug 1982
12 West Water Street, view
looking NW. 1912, Harris &
Shopbell, architects.



Original Newburgh District
National Register
Douglas L. Stern, 604 Adams
Ave, Evansville, Ind 47713
10. 29 Aug 1982
24 West Jennings Street, view
looking N.



Original Newburgh District

National Register

Douglas L Stern, 604 Adams

Ave, Evansville, Ind 47713

11. 27 Sept 1982

23 West Jennings Street, view

looking SE.



Original Newburgh District
National Register
Douglas L Stern, 604 Adams
Ave, Evansville; Ind 47713
12. 27 Sept 1982
Jennings Street, looking E
from 23 West Jennings Street.



Original Newburgh District

National Register

Douglas L Stern, 604 Adams

Ave, Evansville, Ind 47713

13. 27 Sept 1982

West Jennings Street, south

side, looking SSW from 17 West

Jennings.



Original Newburgh District

National Register

Douglas L Stern, 604 Adams

Ave, Evansville, Ind 47713

14. 29 Aug 1982

20 West Jennings, view NW.

Built after fire, ca 1920.



THE
BANK
OF
MICHIGAN
INCORPORATED
1892

Original Newburgh District

National Register

Douglas L Stern, 604 Adams

Ave, Evansville, Ind 47713

15. 27 Sept 1982

17 West Jennings Street, view

S.



Original Newburgh District
National Register

Douglas L Stern, 604 Adams
Ave, Evansville, Ind 47713

16. 29 Aug 1982

12 West Jennings, view NW. The
1843 Delaney Academy was on
site to the W.



Original Newburgh District
National Register
Douglas L Stern, 604 Adams
Ave, Evansville, Ind 47713
17. 29 Aug 1982
10 West Jennings, view NE.
Probably built for Dr William
Slaughter, circa 1865.



CASTLE CONTRACTOR

CASTLE
CONTRACTOR

CASTLE CONTRACTOR

Original Newburgh District

National Register

Douglas L Stern, 604 Adams

Ave, Evansville, Ind 47713

18. 29 Aug 1982

8 West Jennings, view NW,

Built as a store, ca 1920.



Original Newburgh District

National Register

Douglas L. Stern, 604 Adams

Ave, Evansville, Ind 47713

19. 27 Sept 1982

West Jennings, south side,

view SW from 9 W Jennings.



Original Newburgh District

National Register

Douglas L Stern, 604 Adams

Ave, Evansville, Ind 47713

20. 29 Aug 1982

100 State Street, view looking

NW.



Original Newburgh District

National Register

Douglas L Stern, 604 Adams

Ave, Evansville, Ind 47713

21. 27 Sept 1982

1 West Jennings, view SW



Original Newburgh District
National Register

Douglas L Stern, 604 Adams
Avenue, Evansville, IN 47711.

22. 29 Aug 1982

State & Jennings, north side,
view NW. (1-r) 100 & 101
State Street.



Original Newburgh District
National Register

Douglas L Stern, 604 Adams
Ave, Evansville, Ind 47713

23. 29 Aug 1982

State & Jennings, south side,
looking SW. 11 Satate (l) &
1 West Jennings (r).



Original Newburgh District

National Register

Douglas L Stern, 604 Adams
Ave, Evansville, Ind 47713

24. 29 Aug 1982

11 E Jennings, view S. Circa.
1930, after Ind 662 routing.



Original Newburgh District
National Register

Douglas L Stern, 604 Adams
Ave, Evansville, Ind 47713

25. 29 Aug 1982

18 E Jennings, view NW. 6/6

windows akin to Pettit's 1854

5 State Street.



Wilkins
HAIR FASHIONS

Original Newburgh District

National Register

Douglas L Stern, 604 Adams
Ave, Evansville, Ind 47713

26. 27 Sept 1982

West Main Street, south side,
view SW between State and
Monroe.



ONE
WAY
→

STOP

WALKWAY

Original Newburgh District
National Register

Douglas L Stern, 604 Adams
Ave, Evansville, Ind 47713

27. 27 Sept 1982

West Main, view looking W
from State Street.



Office Supplies

ONE WAY

PRINTING

OFFSET
SERIES
BOOKING

OFFICE SUPPLIES

Original Newburgh District

National Register

Douglas L Stern, 604 Adams

Ave, Evansville, Ind 47713

28. 27 Sept 1982

116 State Street, view SW.

Circa 1865; possibly remodeled

at the turn of the century.



Original Newburgh District
National Register

Douglas L Stern, 604 Adams
Ave, Evansville, Ind 47713

29. 29 Aug 1982

General view, looking W, of
Main Street from east side
of State.



Original Newburgh District

National Register

Douglas L Stern, 604 Adams

Ave, Evansville, Ind 47713

30. 27 Sept 1982

General view, N, of State from

Water. 1976 fire and pro-

tracted demolition on NWC.



Original Newburgh District

National Register

Douglas L. Stern, 604 Adams

Ave, Evansville, Ind 47713

31. 27 Sept 1982

State Street, east side, view

NE. (R-1) 5, 7, 9, & 11

State Street.



INDIANA
261



ART & FRAMING
Newburgh Galleries

THE Gallery BUILDING

FINE ART GALLERY

INTERIOR DESIGN STUDIO

CREATIVE FRAMING

Original Newburgh District
National Register
Douglas L Stern, 604 Adams
Ave, Evansville, Ind 47713
32. 27 Sept 1982
11 State Street, view SE. 1914
plans were probably not built
until after 1918.



Original Newburgh District
National Register

Douglas L Stern, 604 Adams
Ave, Evansville, Ind 47713

33. 29 Aug 1982

State Street, west side, view
NW, Jennings to Main.



Original Newburgh District
National Register
Douglas L Stern, 604 Adams
Ave, Evansville, Ind 47713
34. 27 Sept 1982
State Street, east side, view
NE. (R-1) 101, 103, 105
State Street.



Original Newburgh District
National Register
Douglas L Stern, 604 Adams
Ave, Evansville, Ind 47713

35. 29 Aug 1982

State Street, west side, view
SW, from Phelps's Block to
the river.



Original Newburgh District
National Register

Douglas L Stern, 604 Adams
Ave, Evansville, Ind 47713

36. 27 Sept 1982

State Street, east side, view
SE. (L-r) 109, 107, 105, 103
and 101 State.



Original Newburgh District
National Register
Douglas L Stern, 604 Adams
Ave, Evansville, Ind 47713

37. 27 Sept 82

State Street, both sides,
view S, from Phelps's Block
to the river.



Original Newburgh District
National Register
Douglas L Stern, 604 Adams
Ave, Evansville, Ind 47713

38. 27 Sept 82

111 State Street, view look-
ing NE.



Original Newburgh District

National Register

Douglas L Stern, 604 Adams

Ave, Evansville, Ind 47713

39. 27 Sept 1982

115-19 State Street, view SE.

Probably ca 1860. Town's

1st P.O., 1868. Long-time groc.



DRUGS
PAINTS
GLASS

BOB'S

W. E. DEER
PHOTO

Original Newburgh District
National Register

Douglas L Stern, 604 Adams
Ave, Evansville, Ind 47713
1902 view, looking SSE, of
State Street. 1930 road pro-
ject demo bldg on NEC State
and Jennings.