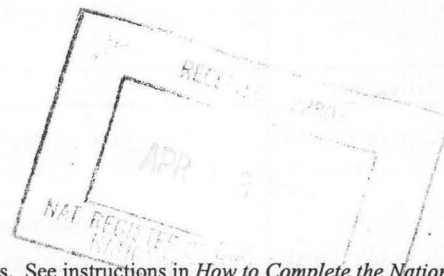


United States Department of the Interior  
National Park Service

National Register of Historic Places  
Registration Form



This form is for use in nominating or requesting determinations for individual properties and districts. See instructions in *How to Complete the National Register of Historic Places Registration Form* (National Register Bulletin 16A). Complete each item by marking "x" in the appropriate box or by entering the information requested. If an item does not apply to the property being documented, enter "N/A" for "not applicable." For functions, architectural classification, materials, and areas of significance, enter only categories and subcategories from the instructions. Place additional entries and narrative items on continuation sheets (NPS Form 10-900a). Use a typewriter, word processor, or computer, to complete all items.

1. Name of Property

historic name St. Louis San Francisco (Frisco) Railway Steam Locomotive #4003

other names/site number U.S. Railway Administration Steam Locomotive #20008, Site #SB0558

2. Location

street & number 100 South 4<sup>th</sup> Street

☐ not for publication

city or town Fort Smith

☐ vicinity

state Arkansas code AR county Sebastian code 131 zip code 72901

3. State/Federal Agency Certification

As the designated authority under the National Historic Preservation Act, as amended, I hereby certify that this ☒ nomination ☐ request for determination of eligibility meets the documentation standards for registering properties in the National Register of Historic Places and meets the procedural and professional requirements set for in 36 CFR Part 60. In my opinion, the property ☐ meets ☐ does not meet the National Register criteria. I recommend that this property be considered significant ☐ nationally ☒ statewide ☐ locally. (See continuation sheet for additional comments.)

Cathie M. Nelson  
Signature of certifying official/Title

3/11/04  
Date

Arkansas Historic Preservation Program

State or Federal agency and bureau

In my opinion, the property ☐ meets ☐ does not meet the National Register criteria. (☐ See Continuation sheet for additional comments.)

\_\_\_\_\_  
Signature of certifying official/Title

\_\_\_\_\_  
Date

\_\_\_\_\_  
State or Federal agency and bureau

4. National Park Service Certification

I hereby certify that the property is:

☐ entered in the National Register.  
☐ See continuation sheet

☐ determined eligible for the  
National Register.  
☐ See continuation sheet

☐ determined not eligible for the  
National Register.

☐ removed from the National  
Register.

☐ other, (explain:) \_\_\_\_\_

\_\_\_\_\_  
Signature of the Keeper

\_\_\_\_\_  
Date of Action

**5. Classification****Ownership of Property**

(Check as many boxes as apply)

- ☒ private  
☐ public-local  
☐ public-State  
☐ public-Federal

**Category of Property**

(Check only one box)

- ☐ building(s)  
☐ district  
☐ site  
☒ structure  
☐ object

**Number of Resources within Property**

(Do not include previously listed resources in count.)

Contributing

Noncontributing

_____	buildings
_____	sites
1	structures
_____	objects
1	Total

**Name of related multiple property listing**

(Enter "N/A" if property is not part of a multiple property listing.)

N/A

**Number of Contributing resources previously listed in the National Register****6. Function or Use****Historic Functions**

(Enter categories from instructions)

TRANSPORTATION/rail-related/locomotive

**Current Functions**

(Enter categories from instructions)

VACANT/NOT IN USE

**7. Description****Architectural Classification**

(Enter categories from instructions)

N/A

**Materials**

(Enter categories from instructions)

foundation N/A

walls N/A

roof N/A

other STEEL

**Narrative Description**

(Describe the historic and current condition of the property on one or more continuation sheets.)

United States Department of the Interior  
National Park Service

## National Register of Historic Places Continuation Sheet

Section number 7 Page 1

### SUMMARY

St. Louis San Francisco (Frisco) Railway Steam Locomotive #4003 is a Class USRA1, 2-8-2-A Mikado freight steam locomotive built by the American Locomotive Company (ALCO) in March 1919. It was operated by the Frisco until 1952. The locomotive was donated to the City of Fort Smith in 1954 and resided in Kay Rodgers Park until c. 2000 when it was removed from the park and donated to the Fort Smith Trolley Museum. The locomotive is now housed at the Fort Smith Trolley Museum where it is on display. Of the 625 Class USRA1, 2-8-2-A locomotives built, Engine #4003 is one of approximately six known remaining in the U.S.

### ELABORATION

The general specifications for the St. Louis San Francisco (Frisco) Railway Steam Locomotive #4003 are as follows:

Make:	Class USRA1, 2-8-2-A Mikado freight steam locomotive. (The term Mikado refers to the Emperor of Japan since the first locomotives of this type were built by Baldwin in 1897 for the Japanese Government Railways. During World War II, many railroads referred to them as MacArthurs.)
Builder:	American Locomotive Company (ALCO), Schenectady, New York.
Tractive Power:	54,700 pounds (62,900 pounds after the booster engine was installed)
Length:	Engine & Tender – Approximately 80'.
Empty Weight:	303,000 lbs.
Tender Capacity:	Water – 10,000 gallons Coal – 18 tons
Cost:	\$53,619

St. Louis San Francisco (Frisco) Railway Steam Locomotive #4003 is a Class USRA1, 2-8-2-A Mikado freight steam locomotive built by the American Locomotive Company (ALCO) in Schenectady, New York, in March 1919. It operated on the Frisco's tracks between Fort Smith, Arkansas, and Monett, Missouri, and mainly hauled freight trains, although it occasionally hauled passenger trains as well. The 2-8-2 designation refers to the fact that the locomotive has a two-wheel lead truck, eight driving wheels, and a two-wheel trailing truck. The "A" designation refers to the fact that Engine #4003 is a light version designed to operate on light rail. (Heavy versions were given a "B" designation.) The driving wheels are 63" in diameter.

United States Department of the Interior  
National Park Service

## National Register of Historic Places Continuation Sheet

Section number 7 Page 2

Engine #4003 is a coal-burning locomotive. The total heating surface of the locomotive, including the tubes and flues and the firebox arch tubes and combustion chamber, is approximately 3,800 square feet. The locomotive is also equipped with a Locomotive Superheater Company superheater. The boiler operates at a pressure of 200 pounds. The cylinders of the locomotive measure 26" x 30". Engine #4003 is equipped with a Waelschart Valve Gear and a Franklin Type-E Reverse Gear.

The tender that accompanies Engine #4003 has a capacity of approximately 10,000 gallons of water and 18 tons of coal. It rests on two, four-wheel trucks.

### Integrity

Engine #4003 possesses very strong integrity. Although the locomotive is currently not operational, it has been inspected and determined that it could be restored to operational condition again. Since Engine #4003 was built, parts of the locomotive have been replaced and repaired. However, this is a normal practice for steam locomotives as parts wear out. Engine #4003 currently resides at the Fort Smith Trolley Museum, and sits among other pieces of rolling stock on a spur off of the original Frisco rail line. Additionally, the spur appears on the 1947 USGS topographic map, indicating that it was in place while Engine #4003 was in service. As a result, its current setting still reflects Engine #4003's period of significance while it was in operation on the Frisco in the Fort Smith area.



**8. Statement of Significance****Applicable National Register Criteria**

(Mark "x" in one or more boxes for the criteria qualifying the property for National Register listing.)

- ☒ **A** Property is associated with events that have made a significant contribution to the broad patterns of our history.
- ☐ **B** Property is associated with the lives of persons significant in our past.
- ☒ **C** Property embodies the distinctive characteristics of a type, period, or method of construction or represents the work of a master, or possesses high artistic values, or represents a significant and distinguishable entity whose components lack individual distinction.
- ☐ **D** Property has yielded, or is likely to yield, information important in prehistory or history.

**Criteria Considerations**

(Mark "x" in all the boxes that apply.)

Property is:

- ☐ **A** owned by a religious institution or used for religious purposes.
- ☐ **B** removed from its original location.
- ☐ **C** birthplace or grave of a historical figure of outstanding importance.
- ☐ **D** a cemetery.
- ☐ **E** a reconstructed building, object, or structure.
- ☐ **F** a commemorative property
- ☐ **G** less than 50 years of age or achieved significance within the past 50 years.

**Levels of Significance** (local, state, national)

State

**Areas of Significance** (Enter categories from instructions)

Engineering

Transportation

**Period of Significance**

1919-1952

**Significant Dates**

1919

**Significant Person** (Complete if Criterion B is marked)**Cultural Affiliation** (Complete if Criterion D is marked)**Architect/Builder**

American Locomotive Company (ALCO), Builder

**Narrative Statement of Significance**

(Explain the significance of the property on one or more continuation sheets.)

**9. Major Bibliographical References****Bibliography**

(Cite the books, articles, and other sources used in preparing this form on one or more continuation sheets.)

**Previous documentation on file (NPS):**

- ☐ preliminary determination of individual listing (36 CFR 67) has been requested
- ☐ previously listed in the National Register
- ☐ Previously determined eligible by the National Register
- ☐ designated a National Historic Landmark
- ☐ recorded by Historic American Buildings Survey  
# \_\_\_\_\_
- ☐ recorded by Historic American Engineering  
Record # \_\_\_\_\_

**Primary location of additional data:**

- ☒ State Historic Preservation Office
- ☐ Other State Agency
- ☐ Federal Agency
- ☐ Local Government
- ☐ University
- ☒ Other

Name of repository:

Fort Smith Trolley Museum

**10. Geographical Data**Acreage of Property Less than one.**UTM References**

(Place additional UTM references on a continuation sheet.)

1	<u>15</u>	<u>370143</u>	<u>3916502</u>
	Zone	Easting	Northing
2	<u>      </u>	<u>      </u>	<u>      </u>

3	<u>      </u>	<u>      </u>	<u>      </u>
	Zone	Easting	Northing
4	<u>      </u>	<u>      </u>	<u>      </u>

☐ See continuation sheet

**Verbal Boundary Description**

(Describe the boundaries of the property on a continuation sheet.)

**Boundary Justification**

(Explain why the boundaries were selected on a continuation sheet.)

**11. Form Prepared By**

name/title	<u>Ralph S. Wilcox, National Register &amp; Survey Coordinator</u>		
organization	<u>Arkansas Historic Preservation Program</u>	date	<u>October 13, 2003</u>
street & number	<u>1500 Tower Building, 323 Center Street</u>	telephone	<u>(501) 324-9787</u>
city or town	<u>Little Rock</u>	state	<u>AR</u>
		zip code	<u>72201</u>

**Additional Documentation**

Submit the following items with the completed form:

**Continuation Sheets****Maps**A **USGS map** (7.5 or 15 minute series) indicating the property's locationA **Sketch map** for historic districts and properties having large acreage or numerous resources.**Photographs**Representative **black and white photographs** of the property.**Additional items**

(Check with the SHPO or FPO for any additional items.)

**Property Owner**

(Complete this item at the request of SHPO or FPO.)

name	<u>Fort Smith Trolley Museum</u>		
street & number	<u>100 South 4<sup>th</sup> Street</u>	telephone	<u>      </u>
city or town	<u>Fort Smith</u>	state	<u>AR</u>
		zip code	<u>72901</u>

**Paperwork Reduction Act Statement:** This information is being collected for applications to the National Register of Historic Places to nominate properties for listing or determine eligibility for listing, to list properties, and to amend existing listing. Response to this request is required to obtain a benefit in accordance with the National Historic Preservation Act, as amended (16 U.S.C. 470 *et seq.*)

**Estimated Burden Statement:** Public reporting burden for this form is estimated to average 18.1 hours per response including time for reviewing instructions, gathering and maintaining data, and completing and reviewing the form. Direct comments regarding this burden estimate or any aspect of this form to the Chief, Administrative Services Division, National Park Service, P. O. Box 37127, Washington, DC 20013-7127; and the Office of Management and Budget, Paperwork Reductions Projects (1024-0018), Washington, DC 20303.

United States Department of the Interior  
National Park Service

## National Register of Historic Places Continuation Sheet

Section number 8 Page 1

### SUMMARY

St. Louis San Francisco (Frisco) Railway Steam Locomotive #4003 is being nominated to the National Register of Historic Places with **statewide significance** under **Criterion C** for its engineering as the only Class USRA1, 2-8-2-A Mikado type freight steam locomotive remaining in Arkansas. The locomotive was a workhorse in freight service on the Frisco for 33 years until more efficient diesel locomotives began to replace steam locomotives. As a result, it is therefore eligible for nomination under **Criterion A** for its association with the role of railroad transportation in Arkansas.

### ELABORATION

Although the first railroad line in the United States was laid in the late 1820s, very little railroad construction was completed in Arkansas prior to the Civil War. The Memphis & Little Rock Railroad, which had laid some track westward from Hopefield and eastward from Little Rock, and the Mississippi, Ouachita, & Red River, which had laid a few miles of track inland from Chicot and Arkansas City, were the only railroads to complete any construction prior to 1860.<sup>1</sup>

The Civil War, however, delayed the building of railroads by a decade, and it was not until the 1870s that railroad building took off again. The St. Louis, Iron Mountain & Southern built a line south from St. Louis to the Arkansas border. They wanted to go to Texas, and purchased the Cairo & Fulton. Although the Cairo & Fulton had not done any construction, they had secured rights-of-way prior to the Civil War. The St. Louis, Iron Mountain & Southern reached Little Rock by 1872, and had completed the first line across Arkansas when it reached Texarkana in 1874.<sup>2</sup>

The second railroad line to reach across the state incorporated the Memphis & Little Rock Railroad, and the newly constructed Little Rock & Fort Smith, which had reached the coal fields of Clarksville in 1874 and Fort Smith five years later. The Little Rock & Fort Smith was purchased by Jay Gould (who already owned the Iron Mountain lines) in 1882, and became part of the Iron Mountain system – the largest railroad system in the state in the late nineteenth-century.<sup>3</sup>

The history of the Frisco Railroad began in 1866 with the chartering of the Atlantic & Pacific Railroad (A&P), which wanted to build a railroad line roughly along the 35<sup>th</sup> parallel from Springfield, Missouri, to the Pacific. However, securing financing for the railroad was not easy, and the A&P went into receivership in 1875. The portion of the A&P that was in Missouri was sold and became the St. Louis & San Francisco Railway. (The portion in what is now Oklahoma kept the Atlantic & Pacific name.) The Frisco expanded its

<sup>1</sup> Elliott West. *The WPA Guide to 1930s Arkansas*. Lawrence, KS: University Press of Kansas, 1987 reprint of 1941 publication p. 54.

<sup>2</sup> Ibid.

<sup>3</sup> West, p. 55.

United States Department of the Interior  
National Park Service

## National Register of Historic Places Continuation Sheet

Section number 8 Page 2

lines throughout the 1880s, and the railroad was purchased in 1890 by the Santa Fe. The ownership was short-lived, however, as the Santa Fe went into receivership in 1893. In 1896, a new St. Louis & San Francisco Railroad was organized, comprised of the old Frisco line as well as the A&P in Oklahoma.<sup>4</sup>

Shortly after the turn of the twentieth century, Benjamin F. Yoakum acquired control of the Frisco. By that time, he already held the Rock Island, Chicago & Eastern Illinois, and the railroads that would become known as the Gulf Coast lines. His empire came crashing down in 1913, and the Frisco was again reorganized as the St. Louis-San Francisco Railway in 1916. The new Frisco assumed the role of a regional railroad, and prospered until the time of the Depression, going into receivership again in 1932. The prosperity that resulted from increased traffic during World War II allowed the Frisco to emerge from receivership in 1947. In 1966 the Burlington acquired a large amount of Frisco stock, and the Frisco ultimately merged with the Burlington Northern on November 21, 1980.<sup>5</sup>

The line between Fort Smith and Monett, Missouri, which Engine #4003 was assigned to, was under construction by 1881 as part of the St. Louis, Arkansas, & Texas Railroad.<sup>6</sup> The route chosen by the railroad across Northwestern Arkansas to Fort Smith actually followed the old Butterfield stage route.<sup>7</sup> However, it was not until 1884 that the line was completed into Fort Smith. The reason for the delay in the completion of the line was because it had to cross the military reservation at Fort Smith. As a result, Congress had to pass and the President had to sign an act allowing the railroad line to cross the reservation. In return for the permission, the railroad was required to construct a stone wall along the inside boundary of the right-of-way. The wall constructed by the railroad matched the walls on the other three sides of the reservation and completed the enclosure of the reservation.<sup>8</sup> By 1895, the St. Louis, Arkansas & Texas Railroad became part of the Frisco system.<sup>9</sup>

In the early twentieth century, the Frisco Railroad, like most other American railroads, made little investment in new equipment for its line. Increased labor costs and debt left over from the 1907 financial panic meant that there was little extra money for new locomotives and cars. As a result, when World War I broke out, it quickly became apparent that American railroads were not prepared to handle the sudden increase in traffic that the war mobilization effort required. The locomotives and cars in use on railroads across the country,

<sup>4</sup> Drury, George H. *The Historical Guide to North American Railroads*. Milwaukee, WI: Kalmbach Books, 1985, p. 287.

<sup>5</sup> Drury, George H. *The Historical Guide to North American Railroads*. Milwaukee, WI: Kalmbach Books, 1985, p. 288.

<sup>6</sup> *Map of the Chester, Iron Mountain & Western Railroad and its connections*. Map. New York: G.W. & C.B. Colton & Co., 1881.

<sup>7</sup> West, p. 55.

<sup>8</sup> Faulk, Odie B. ad Billy Mac Jones. *Fort Smith: An Illustrated History*. Muskogee, OK: Western Heritage Books, 1983, p. 67.

<sup>9</sup> *Cram's Township and Railroad Map of Arkansas*. Map. Chicago: George Franklin Cram, 1895.



United States Department of the Interior  
National Park Service

## National Register of Historic Places Continuation Sheet

Section number 8 Page 3

including the Frisco, were not well maintained, obsolete, and not plentiful enough to meet the demand.<sup>10</sup> The solution to the problem was the United States Railroad Administration (USRA), which was founded on December 28, 1917.<sup>11</sup>

The USRA was created in order to oversee the nationalization of the privately-owned American railroad, and when it took over that task on January 1, 1918, it identified the shortage of locomotives as the one of the problems that needed immediate attention. In order to address this problem, the USRA created a Locomotive Committee with representatives from eleven railroads and the three major locomotive builders of the time (ALCO, Baldwin, and Lima) to develop standard locomotive designs that could be used across the country. Using standard plans would allow the railroads and locomotive builders to take advantage of the concepts of standardized parts and mass production. Using proven locomotive designs and incorporating the best of the era's modern technology, the Committee created designs for twelve different types of locomotives.<sup>12</sup>

The first locomotive built to USRA design, Baltimore and Ohio #4500, a 2-8-2-A Mikado type built by the Baldwin Locomotive Works in Philadelphia, was ready for service on July 4, 1918, only seven months after the USRA's creation. It turned out that the influence of the USRA would be quite far-reaching. During the reign of the USRA from January 1, 1918, until its jurisdiction ended in March 1920, 1,856 locomotives were built to their designs. Amazingly, another 3,251 locomotives were built to the USRA's designs after World War I ended. All together, 97 railroads used USRA locomotive designs.<sup>13</sup>

Of the twelve designs developed by the USRA, the 2-8-2-A Mikado was by far the most popular design built, and it was also the principal freight locomotive used in North America. Of the 1,856 locomotives built to USRA designs during its existence, 625 were 2-8-2-A light Mikados, which was more than all the other USRA designs combined.<sup>14</sup> USRA 2-8-2-A Mikados would eventually be assigned to a total of 32 different railroads.<sup>15</sup> The Frisco Railroad had a total of 33 USRA 2-8-2-A Mikados, although, interestingly, none of them were originally allocated to the Frisco by the USRA. Twenty-three of the locomotives (#4000-4007 and 4017-4031) were initially allocated to the Pennsylvania Railroad (PRR), but were rejected. The other ten

<sup>10</sup> Keller, Vagel C., Jr. Book review of *Uncle Sam's Locomotives: The USRA and the Nation's Railroads* by Eugene L. Huddleston. Found at: <http://www.hbs.edu/bhr/archives/bookreviews/77/2003summervkeller.pdf>.

<sup>11</sup> USRA locomotive information found at: <http://www.steamlocomotive.com/misc/usra.html>.

<sup>12</sup> American Society of Mechanical Engineers. *USRA Steam Locomotives: Atlantic Coast Line 1504 and Baltimore and Ohio 4500*. October 23, 1990. Found at: <http://www.asme.org/history/brochures/h147-h148.pdf>.

<sup>13</sup> Ibid.

<sup>14</sup> Ibid.

<sup>15</sup> Huddleston, Eugene L. *Uncle Sam's Locomotives: The USRA and the Nation's Railroads*. Bloomington, IN: Indiana University Press, p. 43.



United States Department of the Interior  
National Park Service

## National Register of Historic Places Continuation Sheet

Section number 8 Page 4

examples were originally allocated to the Indiana Harbor Belt Railroad, a division of the New York Central. (All together, the Frisco would have 125 Mikados in their fleet.)<sup>16</sup>

Originally, the Frisco told the USRA that they were not interested in the locomotives, either. However, the railroad saw how good they were, and eventually decided to accept them. To prepare them for service, the Frisco modified them, fitting them with cast trailing trucks and boosters.<sup>17</sup> Additionally, most of the Mikados that the Frisco received from the USRA, including Engine #4003, had their cab roofs raised for additional headroom.<sup>18</sup>

Frisco Engine #4003 was built by ALCO in March 1919 in their Schenectady, New York, shops as USRA Engine #20008. It was ALCO construction number 60946, and cost \$53,619 to build. After the locomotive had been rejected by the PRR, it was purchased by the Frisco in August 1919, and placed in service hauling freight trains between Fort Smith, Arkansas, and Monett, Missouri. Engine #4003 was also used for occasional passenger service.<sup>19</sup> (Engine #4003 would be one of only three ALCO-built Mikados in service on the Frisco.<sup>20</sup>)

The 2-8-2-A Mikado design, like Engine #4003, was a good choice on the line between Fort Smith and Monett, which was one of the Frisco's major branch lines. Mikados were relatively large locomotives, which meant that they could haul general purpose freight trains of between 3,000 and 5,000 tons. It was a design that was also well-suited to hauling passenger trains on steep grades, something that would have been found on the Fort Smith-Monett line as it wound its way through the Boston Mountains.<sup>21</sup>

The freight trains that Engine #4003 hauled likely carried fruit and zinc among other products. Monett, at least during the first half of the twentieth century, was the shipping center of the berry-growing region in that part of Missouri. The fruit was brought to Monett by truck and wagon from the surrounding farms where it was then crated and loaded onto freight cars and shipped. By 1941, approximately 1,000,000 quarts of berries were shipped from the region.<sup>22</sup> In addition, nearby Joplin was the center of a zinc mining region in Southwest Missouri, and some of the zinc was brought to Fort Smith where it was refined in two smelters

<sup>16</sup> Information on USRA locomotives and Mikados from [www.steamlocomotive.com](http://www.steamlocomotive.com).

<sup>17</sup> Boosters are small, two-cylinder steam engines, usually mounted on the trailing truck of the locomotive and geared to one axle, that converted extra steam available at low speeds to additional tractive force for starting a train. Boosters were usually usable up to about 15 mph. If a locomotive did not have a trailing truck, the booster could be fitted to the tender.

<sup>18</sup> Drury, George H. *Guide to North American Steam Locomotives*. Waukesha, WI: Kalmbach Books, 1993, p. 342.

<sup>19</sup> Information on Engine #4003 from [www.steamlocomotive.info](http://www.steamlocomotive.info).

<sup>20</sup> Information on Mikados from [www.steamlocomotive.com](http://www.steamlocomotive.com).

<sup>21</sup> Ibid.

<sup>22</sup> *Missouri: The WPA Guide to the "Show-Me" State*. St. Louis: John S. Swift Company, 1998 reprint of 1941 publication, p. 434.

United States Department of the Interior  
National Park Service

## National Register of Historic Places Continuation Sheet

Section number 8 Page 5

that existed on the northeast side of town. The smelters' location on Midland Boulevard was located adjacent to the Frisco line as it entered Fort Smith from Van Buren.<sup>23</sup>

By 1940, the Frisco, like many American railroads, began using diesel powered locomotives on their lines. Diesel locomotives are able to start a heavy train from a standstill more quickly than a steam locomotive can. Additionally, diesel locomotives are ready to work at any time, and spend much less time out of service for service and repairs than do steam locomotives. They can also travel greater distances without stopping for fuel. The many advantages of diesel power would have been appealing to the Frisco, as they were to other railroads. The Frisco began an earnest effort in 1948 to switch to diesel locomotives, and, as a result, Engine #4003 was retired by the Frisco in 1952.<sup>24</sup> (In fact, the last steam-powered train on the Frisco ran between Birmingham and Bessemer, Alabama, in February 1952.<sup>25</sup>)

Although it was retired in 1952, the Frisco kept Engine #4003 until September 1954 when it was donated to the City of Fort Smith.<sup>26</sup> The City of Fort Smith placed the locomotive in Kay Rodgers Park on Midland Boulevard where it remained until c. 2000. At that time, the City donated the locomotive to the Fort Smith Trolley Museum as long as the Museum paid for the cost of locomotive's move. Professional house movers were hired and the move from Kay Rodgers Park to the Museum's grounds was completed c. 2000. Engine #4003 currently resides at the Fort Smith Trolley Museum, and sits among other pieces of rolling stock on a spur off of the original Frisco rail line.<sup>27</sup>

Although Engine #4003 is currently not operational, it has been determined that it is in good condition and could be restored to operating condition. However, the Museum has no plans to restore the locomotive at the present time. The estimated cost of restoration is \$500,000-\$750,000, and the fact that the Museum does not own any track where the locomotive could be run are major obstacles to completing a restoration.<sup>28</sup>

Today, St. Louis San Francisco (Frisco) Railway Steam Locomotive #4003 is a living reminder of Arkansas's rich railroad history, and the rich history of the Frisco's presence in Fort Smith and Northwest Arkansas in the early part of the twentieth century. Frisco Engine #4003 is currently the last remaining Frisco steam locomotive in Arkansas. In addition, Engine #4003 is a rare remnant of the USRA's railroad legacy. The influence of the USRA across the country during and after World War I was extensive with 1,856 locomotives being built to USRA designs during the War and another 3,251 being built after the War.

<sup>23</sup> West, p. 148.

<sup>24</sup> Telephone conversation with Art Martin on August 21, 2003.

<sup>25</sup> Drury, George H. *Guide to North American Steam Locomotives*. Waukesha, WI: Kalmbach Books, 1993, p. 341.

<sup>26</sup> Information on Engine #4003 from [www.steamlocomotive.info](http://www.steamlocomotive.info).

<sup>27</sup> Telephone conversation with Art Martin on August 21, 2003.

<sup>28</sup> Ibid.

United States Department of the Interior  
National Park Service

## National Register of Historic Places Continuation Sheet

Section number 8 Page 6

Engine #4003 is one of only eight total remaining USRA locomotives in existence and one of only six remaining USRA 2-8-2-A locomotives in the country. The survival and continued preservation of Engine #4003 is a monument to the dedication of the Fort Smith Trolley Museum to the preservation of Arkansas's railroad past.

### STATEMENT OF SIGNIFICANCE

St. Louis San Francisco (Frisco) Railway Steam Locomotive #4003 is being nominated to the National Register of Historic Places with **statewide significance** under **Criterion C** for its engineering as the only Class USRA1, 2-8-2-A Mikado type freight steam locomotive remaining in Arkansas. The locomotive was a workhorse in freight service on the Frisco for 33 years until more efficient diesel locomotives began to replace steam locomotives. As a result, it is therefore eligible for nomination under **Criterion A** for its association with the role of railroad transportation in Arkansas.

United States Department of the Interior  
National Park Service

## National Register of Historic Places Continuation Sheet

Section number 9 Page 1

### BIBLIOGRAPHY

American Society of Mechanical Engineers. *USRA Steam Locomotives: Atlantic Coast Line 1504 and Baltimore and Ohio 4500*. October 23, 1990. Found at: <http://www.asme.org/history/brochures/h147-h148.pdf>.

Collias, Joe G. *Frisco Power*. Crestwood, MO: MM Books, 1984.

*Cram's Township and Railroad Map of Arkansas*. Map. Chicago: George Franklin Cram, 1895.

Drury, George H. *Guide to North American Steam Locomotives*. Waukesha, WI: Kalmbach Books, 1993.

Drury, George H. *The Historical Guide to North American Railroads*. Milwaukee, WI: Kalmbach Books, 1985.

Faulk, Odie B. and Billy Mac Jones. *Fort Smith: An Illustrated History*. Muskogee, OK: Western Heritage Books, 1983.

Huddleston, Eugene L. *Uncle Sam's Locomotives: The USRA and the Nation's Railroads*. Bloomington, IN: Indiana University Press, 2002.

Information on Engine #4003 from [www.steamlocomotive.info](http://www.steamlocomotive.info).

Information on Mikados from [www.steamlocomotive.com](http://www.steamlocomotive.com).

Information on USRA locomotives and Mikados from [www.steamlocomotive.com](http://www.steamlocomotive.com).

Keller, Vagel C., Jr. Book review of *Uncle Sam's Locomotives: The USRA and the Nation's Railroads* by Eugene L. Huddleston. Found at: <http://www.hbs.edu/bhr/archives/bookreviews/77/2003summervkeller.pdf>.

*Map of the Chester, Iron Mountain & Western Railroad and its connections*. Map. New York: G.W. & C.B. Colton & Co., 1881.

Martin, Art, President of the Fort Smith Trolley Museum. Telephone conversation with the author. 21 August 2003.

United States Department of the Interior  
National Park Service

## National Register of Historic Places Continuation Sheet

Section number 9 Page 2

---

*Missouri: The WPA Guide to the "Show-Me" State.* St. Louis: John S. Swift Company, 1998 reprint of 1941 publication.

USRA locomotive information found at: <http://www.steamlocomotive.com/misc/usra.html>.

West, Elliott. *The WPA Guide to 1930s Arkansas.* Lawrence, KS: University Press of Kansas, 1987 reprint of 1941 publication.



St. Louis San Francisco (Frisco) Railway Steam Locomotive #4003  
Name of Property

Sebastian County, Arkansas  
County and State

United States Department of the Interior  
National Park Service

## National Register of Historic Places Continuation Sheet

Section number 10 Page 1

---

### VERBAL BOUNDARY DESCRIPTION

St. Louis San Francisco Railway (Frisco) Steam Locomotive #4003 is housed at the Fort Smith Trolley Museum at 100 South 4<sup>th</sup> Street in Fort Smith (UTM: 15/370143/3916502).

### BOUNDARY JUSTIFICATION

The boundary contains all of the property that is historically associated with this resource that retains its integrity.

**The United States Department of the Interior  
National Park Service**

**National Register of Historic Places  
Evaluation/Return Sheet**

Property Name: St. Louis San Francisco (Frisco) Railway Steam Locomotive #4003  
Sebastian County, Arkansas

Reference Number: 04000506

**Reason for Return:**

This nomination is being returned because Section 3 is incomplete and the boundary justification needs clarification. Under Section 3 of the registration form, no indication is given as to whether the certifying official believes that the property does or does not meet the National Register criteria. Section 60.6 of the National Register regulations (36 CFR 60) stipulates that the certifying official must provide this information before submitting documentation to the Keeper of the National Register. Please provide all of the information required under Section 3 before resubmitting the nomination.

Under Section 10 of the registration form, the boundary justification should be revised to more clearly explain that the nominated property includes the full extent of St. Louis San Francisco Railway (Frisco) Steam Locomotive #4003. As currently written, the boundary justification emphasizes the historical association that the nominated property has with the resource (the locomotive) but does not make clear that the resource itself, not the underlying property, is significant under the National Register criteria. Please revise the boundary justification to clarify that the nominated property includes the full extent of the locomotive that meets National Register criteria A and C and retains integrity from its period of significance.

Please feel free to contact me if you have any questions. You may reach me at (202) 354-2252 or by email at <Dan\_Vivian@nps.gov>. We look forward to receiving a revised nomination.

Daniel Vivian, Historian  
National Register of Historic Places

May 24, 2004

UNITED STATES DEPARTMENT OF THE INTERIOR  
NATIONAL PARK SERVICE

NATIONAL REGISTER OF HISTORIC PLACES  
EVALUATION/RETURN SHEET

REQUESTED ACTION: NOMINATION

PROPERTY St. Louis San Francisco (Frisco) Railway Steam Locomotive #4  
NAME: 003

MULTIPLE  
NAME:

STATE & COUNTY: ARKANSAS, Sebastian

DATE RECEIVED: 4/13/04 DATE OF PENDING LIST: 5/07/04  
DATE OF 16TH DAY: 5/22/04 DATE OF 45TH DAY: 5/27/04  
DATE OF WEEKLY LIST:

REFERENCE NUMBER: 04000500

REASONS FOR REVIEW:

APPEAL: N DATA PROBLEM: N LANDSCAPE: N LESS THAN 50 YEARS: N  
OTHER: N PDIL: N PERIOD: N PROGRAM UNAPPROVED: N  
REQUEST: Y SAMPLE: N SLR DRAFT: N NATIONAL: N

COMMENT WAIVER: N

\_\_\_ACCEPT \_\_\_RETURN \_\_\_REJECT \_\_\_DATE

ABSTRACT/SUMMARY COMMENTS:

RETURN. PLEASE SEE ATTACHED  
COMMENTS

RECOM./CRITERIA

REVIEWER Daniel Vivian DISCIPLINE Historian  
TELEPHONE (202) 354-2252 DATE 5/24/04

DOCUMENTATION see attached comments Y/N see attached SLR Y/N

If a nomination is returned to the nominating authority, the nomination is no longer under consideration by the NPS.



# The Department of Arkansas Heritage

Mike Huckabee, Governor  
Cathie Matthews, Director

Arkansas Arts Council

Arkansas Natural Heritage  
Commission

Historic Arkansas Museum

Delta Cultural Center

Old State House Museum



## Arkansas Historic Preservation Program

1500 Tower Building  
323 Center Street  
Little Rock, AR 72201  
(501)324-9880  
fax: (501)324-9184  
tdd: (501)324-9811  
e-mail:  
info@arkansaspreservation.org  
website:  
www.arkansaspreservation.org

April 8, 2004

Carol D. Shull  
Chief of Registration  
United States Department of the Interior  
National Register of Historic Places  
National Park Service  
8th Floor  
1201 Eye Street, NW  
Washington, DC 20005



RE: St. Louis San Francisco (Frisco) Railway Steam  
Locomotive #4003 – Fort Smith, Sebastian County, Arkansas

Dear Carol:

We are enclosing for your review the above-referenced nomination. The Arkansas Historic Preservation Program has complied with all applicable nominating procedures and notification requirements in the nomination process.

If you need further information, please call Ralph S. Wilcox of my staff at (501) 324-9787. Thank you for your cooperation in this matter.

Sincerely,

Cathie Matthews  
State Historic Preservation Officer

CM:rsw

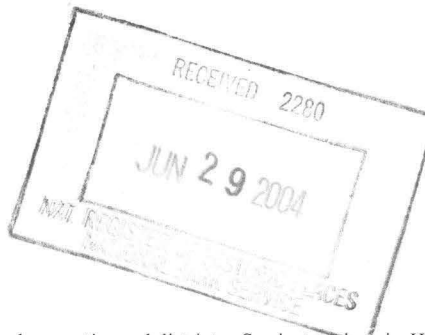
Enclosure

An Equal Opportunity Employer



United States Department of the Interior  
National Park Service

National Register of Historic Places  
Registration Form



This form is for use in nominating or requesting determinations for individual properties and districts. See instructions in *How to Complete the National Register of Historic Places Registration Form* (National Register Bulletin 16A). Complete each item by marking "x" in the appropriate box or by entering the information requested. If an item does not apply to the property being documented, enter "N/A" for "not applicable." For functions, architectural classification, materials, and areas of significance, enter only categories and subcategories from the instructions. Place additional entries and narrative items on continuation sheets (NPS Form 10-900a). Use a typewriter, word processor, or computer, to complete all items.

1. Name of Property

historic name St. Louis San Francisco (Frisco) Railway Steam Locomotive #4003

other names/site number U.S. Railway Administration Steam Locomotive #20008, Site #SB0558

2. Location

street & number 100 South 4<sup>th</sup> Street ☐ not for publication

city or town Fort Smith ☐ vicinity

state Arkansas code AR county Sebastian code 131 zip code 72901

3. State/Federal Agency Certification

As the designated authority under the National Historic Preservation Act, as amended, I hereby certify that this ☒ nomination ☐  
request for determination of eligibility meets the documentation standards for registering properties in the National Register of Historic  
Places and meets the procedural and professional requirements set for in 36 CFR Part 60. In my opinion, the property ☒ meets ☐  
does not meet the National Register criteria. I recommend that this property be considered significant  
☐ nationally ☒ statewide ☐ locally. (See continuation sheet for additional comments.)

Cathie Matthews  
Signature of certifying official/Title

6/25/04  
Date

Arkansas Historic Preservation Program

State or Federal agency and bureau

In my opinion, the property ☐ meets ☐ does not meet the National Register criteria. (☐ See Continuation sheet for additional  
comments.)

\_\_\_\_\_  
Signature of certifying official/Title

\_\_\_\_\_  
Date

\_\_\_\_\_  
State or Federal agency and bureau

4. National Park Service Certification

I hereby certify that the property is:

☒ entered in the National Register.

☐ See continuation sheet

☐ determined eligible for the  
National Register.

☐ See continuation sheet

☐ determined not eligible for the  
National Register.

☐ removed from the National  
Register.

☐ other, (explain:) \_\_\_\_\_

for  
Signature of the Keeper

Date of Action

Daniel J. [Signature]

7/12/04



St. Louis San Francisco (Frisco) Railway Steam Locomotive #4003

Name of Property

Sebastian County, Arkansas

County and State

**5. Classification****Ownership of Property**

(Check as many boxes as apply)

- ☒ private  
☐ public-local  
☐ public-State  
☐ public-Federal

**Category of Property**

(Check only one box)

- ☐ building(s)  
☐ district  
☐ site  
☒ structure  
☐ object

**Number of Resources within Property**

(Do not include previously listed resources in count.)

Contributing

Noncontributing

_____	buildings
_____	sites
1	structures
_____	objects
1	Total

**Name of related multiple property listing**

(Enter "N/A" if property is not part of a multiple property listing.)

N/A

**Number of Contributing resources previously listed in the National Register****6. Function or Use****Historic Functions**

(Enter categories from instructions)

TRANSPORTATION/rail-related/locomotive

**Current Functions**

(Enter categories from instructions)

VACANT/NOT IN USE

**7. Description****Architectural Classification**

(Enter categories from instructions)

N/A

**Materials**

(Enter categories from instructions)

foundation N/A

walls N/A

roof N/A

other STEEL

**Narrative Description**

(Describe the historic and current condition of the property on one or more continuation sheets.)

United States Department of the Interior  
National Park Service

## National Register of Historic Places Continuation Sheet

Section number 7 Page 1

### SUMMARY

St. Louis San Francisco (Frisco) Railway Steam Locomotive #4003 is a Class USRA1, 2-8-2-A Mikado freight steam locomotive built by the American Locomotive Company (ALCO) in March 1919. It was operated by the Frisco until 1952. The locomotive was donated to the City of Fort Smith in 1954 and resided in Kay Rodgers Park until c. 2000 when it was removed from the park and donated to the Fort Smith Trolley Museum. The locomotive is now housed at the Fort Smith Trolley Museum where it is on display. Of the 625 Class USRA1, 2-8-2-A locomotives built, Engine #4003 is one of approximately six known remaining in the U.S.

### ELABORATION

The general specifications for the St. Louis San Francisco (Frisco) Railway Steam Locomotive #4003 are as follows:

Make:	Class USRA1, 2-8-2-A Mikado freight steam locomotive. (The term Mikado refers to the Emperor of Japan since the first locomotives of this type were built by Baldwin in 1897 for the Japanese Government Railways. During World War II, many railroads referred to them as MacArthurs.)
Builder:	American Locomotive Company (ALCO), Schenectady, New York.
Tractive Power:	54,700 pounds (62,900 pounds after the booster engine was installed)
Length:	Engine & Tender – Approximately 80’.
Empty Weight:	303,000 lbs.
Tender Capacity:	Water – 10,000 gallons Coal – 18 tons
Cost:	\$53,619

St. Louis San Francisco (Frisco) Railway Steam Locomotive #4003 is a Class USRA1, 2-8-2-A Mikado freight steam locomotive built by the American Locomotive Company (ALCO) in Schenectady, New York, in March 1919. It operated on the Frisco’s tracks between Fort Smith, Arkansas, and Monett, Missouri, and mainly hauled freight trains, although it occasionally hauled passenger trains as well. The 2-8-2 designation refers to the fact that the locomotive has a two-wheel lead truck, eight driving wheels, and a two-wheel trailing truck. The “A” designation refers to the fact that Engine #4003 is a light version designed to operate on light rail. (Heavy versions were given a “B” designation.) The driving wheels are 63” in diameter.

United States Department of the Interior  
National Park Service

## National Register of Historic Places Continuation Sheet

Section number 7 Page 2

Engine #4003 is a coal-burning locomotive. The total heating surface of the locomotive, including the tubes and flues and the firebox arch tubes and combustion chamber, is approximately 3,800 square feet. The locomotive is also equipped with a Locomotive Superheater Company superheater. The boiler operates at a pressure of 200 pounds. The cylinders of the locomotive measure 26" x 30". Engine #4003 is equipped with a Waelschart Valve Gear and a Franklin Type-E Reverse Gear.

The tender that accompanies Engine #4003 has a capacity of approximately 10,000 gallons of water and 18 tons of coal. It rests on two, four-wheel trucks.

### Integrity

Engine #4003 possesses very strong integrity. Although the locomotive is currently not operational, it has been inspected and determined that it could be restored to operational condition again. Since Engine #4003 was built, parts of the locomotive have been replaced and repaired. However, this is a normal practice for steam locomotives as parts wear out. Engine #4003 currently resides at the Fort Smith Trolley Museum, and sits among other pieces of rolling stock on a spur off of the original Frisco rail line. Additionally, the spur appears on the 1947 USGS topographic map, indicating that it was in place while Engine #4003 was in service. As a result, its current setting still reflects Engine #4003's period of significance while it was in operation on the Frisco in the Fort Smith area.

**8. Statement of Significance****Applicable National Register Criteria**

(Mark "x" in one or more boxes for the criteria qualifying the property for National Register listing.)

- ☒ **A** Property is associated with events that have made a significant contribution to the broad patterns of our history.
- ☐ **B** Property is associated with the lives of persons significant in our past.
- ☒ **C** Property embodies the distinctive characteristics of a type, period, or method of construction or represents the work of a master, or possesses high artistic values, or represents a significant and distinguishable entity whose components lack individual distinction.
- ☐ **D** Property has yielded, or is likely to yield, information important in prehistory or history.

**Criteria Considerations**

(Mark "x" in all the boxes that apply.)

Property is:

- ☐ **A** owned by a religious institution or used for religious purposes.
- ☐ **B** removed from its original location.
- ☐ **C** birthplace or grave of a historical figure of outstanding importance.
- ☐ **D** a cemetery.
- ☐ **E** a reconstructed building, object, or structure.
- ☐ **F** a commemorative property
- ☐ **G** less than 50 years of age or achieved significance within the past 50 years.

**Levels of Significance** (local, state, national)

State

**Areas of Significance** (Enter categories from instructions)

Engineering

Transportation

**Period of Significance**

1919-1952

**Significant Dates**

1919

**Significant Person** (Complete if Criterion B is marked)**Cultural Affiliation** (Complete if Criterion D is marked)**Architect/Builder**

American Locomotive Company (ALCO), Builder

**Narrative Statement of Significance**

(Explain the significance of the property on one or more continuation sheets.)

**9. Major Bibliographical References****Bibliography**

(Cite the books, articles, and other sources used in preparing this form on one or more continuation sheets.)

**Previous documentation on file (NPS):**

- ☐ preliminary determination of individual listing (36 CFR 67) has been requested
- ☐ previously listed in the National Register
- ☐ Previously determined eligible by the National Register
- ☐ designated a National Historic Landmark
- ☐ recorded by Historic American Buildings Survey # \_\_\_\_\_
- ☐ recorded by Historic American Engineering Record # \_\_\_\_\_

**Primary location of additional data:**

- ☒ State Historic Preservation Office
- ☐ Other State Agency
- ☐ Federal Agency
- ☐ Local Government
- ☐ University
- ☒ Other

Name of repository:

Fort Smith Trolley Museum

United States Department of the Interior  
National Park Service

## National Register of Historic Places Continuation Sheet

Section number 8 Page 1

### SUMMARY

St. Louis San Francisco (Frisco) Railway Steam Locomotive #4003 is being nominated to the National Register of Historic Places with **statewide significance** under **Criterion C** for its engineering as the only Class USRA1, 2-8-2-A Mikado type freight steam locomotive remaining in Arkansas. The locomotive was a workhorse in freight service on the Frisco for 33 years until more efficient diesel locomotives began to replace steam locomotives. As a result, it is therefore eligible for nomination under **Criterion A** for its association with the role of railroad transportation in Arkansas.

### ELABORATION

Although the first railroad line in the United States was laid in the late 1820s, very little railroad construction was completed in Arkansas prior to the Civil War. The Memphis & Little Rock Railroad, which had laid some track westward from Hopefield and eastward from Little Rock, and the Mississippi, Ouachita, & Red River, which had laid a few miles of track inland from Chicot and Arkansas City, were the only railroads to complete any construction prior to 1860.<sup>1</sup>

The Civil War, however, delayed the building of railroads by a decade, and it was not until the 1870s that railroad building took off again. The St. Louis, Iron Mountain & Southern built a line south from St. Louis to the Arkansas border. They wanted to go to Texas, and purchased the Cairo & Fulton. Although the Cairo & Fulton had not done any construction, they had secured rights-of-way prior to the Civil War. The St. Louis, Iron Mountain & Southern reached Little Rock by 1872, and had completed the first line across Arkansas when it reached Texarkana in 1874.<sup>2</sup>

The second railroad line to reach across the state incorporated the Memphis & Little Rock Railroad, and the newly constructed Little Rock & Fort Smith, which had reached the coal fields of Clarksville in 1874 and Fort Smith five years later. The Little Rock & Fort Smith was purchased by Jay Gould (who already owned the Iron Mountain lines) in 1882, and became part of the Iron Mountain system – the largest railroad system in the state in the late nineteenth-century.<sup>3</sup>

The history of the Frisco Railroad began in 1866 with the chartering of the Atlantic & Pacific Railroad (A&P), which wanted to build a railroad line roughly along the 35<sup>th</sup> parallel from Springfield, Missouri, to the Pacific. However, securing financing for the railroad was not easy, and the A&P went into receivership in 1875. The portion of the A&P that was in Missouri was sold and became the St. Louis & San Francisco Railway. (The portion in what is now Oklahoma kept the Atlantic & Pacific name.) The Frisco expanded its

<sup>1</sup> Elliott West. *The WPA Guide to 1930s Arkansas*. Lawrence, KS: University Press of Kansas, 1987 reprint of 1941 publication p. 54.

<sup>2</sup> Ibid.

<sup>3</sup> West, p. 55.



United States Department of the Interior  
National Park Service

## National Register of Historic Places Continuation Sheet

Section number 8 Page 2

lines throughout the 1880s, and the railroad was purchased in 1890 by the Santa Fe. The ownership was short-lived, however, as the Santa Fe went into receivership in 1893. In 1896, a new St. Louis & San Francisco Railroad was organized, comprised of the old Frisco line as well as the A&P in Oklahoma.<sup>4</sup>

Shortly after the turn of the twentieth century, Benjamin F. Yoakum acquired control of the Frisco. By that time, he already held the Rock Island, Chicago & Eastern Illinois, and the railroads that would become known as the Gulf Coast lines. His empire came crashing down in 1913, and the Frisco was again reorganized as the St. Louis-San Francisco Railway in 1916. The new Frisco assumed the role of a regional railroad, and prospered until the time of the Depression, going into receivership again in 1932. The prosperity that resulted from increased traffic during World War II allowed the Frisco to emerge from receivership in 1947. In 1966 the Burlington acquired a large amount of Frisco stock, and the Frisco ultimately merged with the Burlington Northern on November 21, 1980.<sup>5</sup>

The line between Fort Smith and Monett, Missouri, which Engine #4003 was assigned to, was under construction by 1881 as part of the St. Louis, Arkansas, & Texas Railroad.<sup>6</sup> The route chosen by the railroad across Northwestern Arkansas to Fort Smith actually followed the old Butterfield stage route.<sup>7</sup> However, it was not until 1884 that the line was completed into Fort Smith. The reason for the delay in the completion of the line was because it had to cross the military reservation at Fort Smith. As a result, Congress had to pass and the President had to sign an act allowing the railroad line to cross the reservation. In return for the permission, the railroad was required to construct a stone wall along the inside boundary of the right-of-way. The wall constructed by the railroad matched the walls on the other three sides of the reservation and completed the enclosure of the reservation.<sup>8</sup> By 1895, the St. Louis, Arkansas & Texas Railroad became part of the Frisco system.<sup>9</sup>

In the early twentieth century, the Frisco Railroad, like most other American railroads, made little investment in new equipment for its line. Increased labor costs and debt left over from the 1907 financial panic meant that there was little extra money for new locomotives and cars. As a result, when World War I broke out, it quickly became apparent that American railroads were not prepared to handle the sudden increase in traffic that the war mobilization effort required. The locomotives and cars in use on railroads across the country,

<sup>4</sup> Drury, George H. *The Historical Guide to North American Railroads*. Milwaukee, WI: Kalmbach Books, 1985, p. 287.

<sup>5</sup> Drury, George H. *The Historical Guide to North American Railroads*. Milwaukee, WI: Kalmbach Books, 1985, p. 288.

<sup>6</sup> *Map of the Chester, Iron Mountain & Western Railroad and its connections*. Map. New York: G.W. & C.B. Colton & Co., 1881.

<sup>7</sup> West, p. 55.

<sup>8</sup> Faulk, Odie B. ad Billy Mac Jones. *Fort Smith: An Illustrated History*. Muskogee, OK: Western Heritage Books, 1983, p. 67.

<sup>9</sup> *Cram's Township and Railroad Map of Arkansas*. Map. Chicago: George Franklin Cram, 1895.

United States Department of the Interior  
National Park Service

## National Register of Historic Places Continuation Sheet

Section number 8 Page 3

including the Frisco, were not well maintained, obsolete, and not plentiful enough to meet the demand.<sup>10</sup> The solution to the problem was the United States Railroad Administration (USRA), which was founded on December 28, 1917.<sup>11</sup>

The USRA was created in order to oversee the nationalization of the privately-owned American railroad, and when it took over that task on January 1, 1918, it identified the shortage of locomotives as the one of the problems that needed immediate attention. In order to address this problem, the USRA created a Locomotive Committee with representatives from eleven railroads and the three major locomotive builders of the time (ALCO, Baldwin, and Lima) to develop standard locomotive designs that could be used across the country. Using standard plans would allow the railroads and locomotive builders to take advantage of the concepts of standardized parts and mass production. Using proven locomotive designs and incorporating the best of the era's modern technology, the Committee created designs for twelve different types of locomotives.<sup>12</sup>

The first locomotive built to USRA design, Baltimore and Ohio #4500, a 2-8-2-A Mikado type built by the Baldwin Locomotive Works in Philadelphia, was ready for service on July 4, 1918, only seven months after the USRA's creation. It turned out that the influence of the USRA would be quite far-reaching. During the reign of the USRA from January 1, 1918, until its jurisdiction ended in March 1920, 1,856 locomotives were built to their designs. Amazingly, another 3,251 locomotives were built to the USRA's designs after World War I ended. All together, 97 railroads used USRA locomotive designs.<sup>13</sup>

Of the twelve designs developed by the USRA, the 2-8-2-A Mikado was by far the most popular design built, and it was also the principal freight locomotive used in North America. Of the 1,856 locomotives built to USRA designs during its existence, 625 were 2-8-2-A light Mikados, which was more than all the other USRA designs combined.<sup>14</sup> USRA 2-8-2-A Mikados would eventually be assigned to a total of 32 different railroads.<sup>15</sup> The Frisco Railroad had a total of 33 USRA 2-8-2-A Mikados, although, interestingly, none of them were originally allocated to the Frisco by the USRA. Twenty-three of the locomotives (#4000-4007 and 4017-4031) were initially allocated to the Pennsylvania Railroad (PRR), but were rejected. The other ten

<sup>10</sup> Keller, Vagel C., Jr. Book review of *Uncle Sam's Locomotives: The USRA and the Nation's Railroads* by Eugene L. Huddleston. Found at: <http://www.hbs.edu/bhr/archives/bookreviews/77/2003summervkeller.pdf>.

<sup>11</sup> USRA locomotive information found at: <http://www.steamlocomotive.com/misc/usra.html>.

<sup>12</sup> American Society of Mechanical Engineers. *USRA Steam Locomotives: Atlantic Coast Line 1504 and Baltimore and Ohio 4500*. October 23, 1990. Found at: <http://www.asme.org/history/brochures/h147-h148.pdf>.

<sup>13</sup> Ibid.

<sup>14</sup> Ibid.

<sup>15</sup> Huddleston, Eugene L. *Uncle Sam's Locomotives: The USRA and the Nation's Railroads*. Bloomington, IN: Indiana University Press, p. 43.

United States Department of the Interior  
National Park Service

## National Register of Historic Places Continuation Sheet

Section number 8 Page 4

examples were originally allocated to the Indiana Harbor Belt Railroad, a division of the New York Central. (All together, the Frisco would have 125 Mikados in their fleet.)<sup>16</sup>

Originally, the Frisco told the USRA that they were not interested in the locomotives, either. However, the railroad saw how good they were, and eventually decided to accept them. To prepare them for service, the Frisco modified them, fitting them with cast trailing trucks and boosters.<sup>17</sup> Additionally, most of the Mikados that the Frisco received from the USRA, including Engine #4003, had their cab roofs raised for additional headroom.<sup>18</sup>

Frisco Engine #4003 was built by ALCO in March 1919 in their Schenectady, New York, shops as USRA Engine #20008. It was ALCO construction number 60946, and cost \$53,619 to build. After the locomotive had been rejected by the PRR, it was purchased by the Frisco in August 1919, and placed in service hauling freight trains between Fort Smith, Arkansas, and Monett, Missouri. Engine #4003 was also used for occasional passenger service.<sup>19</sup> (Engine #4003 would be one of only three ALCO-built Mikados in service on the Frisco.<sup>20</sup>)

The 2-8-2-A Mikado design, like Engine #4003, was a good choice on the line between Fort Smith and Monett, which was one of the Frisco's major branch lines. Mikados were relatively large locomotives, which meant that they could haul general purpose freight trains of between 3,000 and 5,000 tons. It was a design that was also well-suited to hauling passenger trains on steep grades, something that would have been found on the Fort Smith-Monett line as it wound its way through the Boston Mountains.<sup>21</sup>

The freight trains that Engine #4003 hauled likely carried fruit and zinc among other products. Monett, at least during the first half of the twentieth century, was the shipping center of the berry-growing region in that part of Missouri. The fruit was brought to Monett by truck and wagon from the surrounding farms where it was then crated and loaded onto freight cars and shipped. By 1941, approximately 1,000,000 quarts of berries were shipped from the region.<sup>22</sup> In addition, nearby Joplin was the center of a zinc mining region in Southwest Missouri, and some of the zinc was brought to Fort Smith where it was refined in two smelters

<sup>16</sup> Information on USRA locomotives and Mikados from [www.steamlocomotive.com](http://www.steamlocomotive.com).

<sup>17</sup> Boosters are small, two-cylinder steam engines, usually mounted on the trailing truck of the locomotive and geared to one axle, that converted extra steam available at low speeds to additional tractive force for starting a train. Boosters were usually usable up to about 15 mph. If a locomotive did not have a trailing truck, the booster could be fitted to the tender.

<sup>18</sup> Drury, George H. *Guide to North American Steam Locomotives*. Waukesha, WI: Kalmbach Books, 1993, p. 342.

<sup>19</sup> Information on Engine #4003 from [www.steamlocomotive.info](http://www.steamlocomotive.info).

<sup>20</sup> Information on Mikados from [www.steamlocomotive.com](http://www.steamlocomotive.com).

<sup>21</sup> Ibid.

<sup>22</sup> *Missouri: The WPA Guide to the "Show-Me" State*. St. Louis: John S. Swift Company, 1998 reprint of 1941 publication, p. 434.

United States Department of the Interior  
National Park Service

## National Register of Historic Places Continuation Sheet

Section number 8 Page 5

that existed on the northeast side of town. The smelters' location on Midland Boulevard was located adjacent to the Frisco line as it entered Fort Smith from Van Buren.<sup>23</sup>

By 1940, the Frisco, like many American railroads, began using diesel powered locomotives on their lines. Diesel locomotives are able to start a heavy train from a standstill more quickly than a steam locomotive can. Additionally, diesel locomotives are ready to work at any time, and spend much less time out of service for service and repairs than do steam locomotives. They can also travel greater distances without stopping for fuel. The many advantages of diesel power would have been appealing to the Frisco, as they were to other railroads. The Frisco began an earnest effort in 1948 to switch to diesel locomotives, and, as a result, Engine #4003 was retired by the Frisco in 1952.<sup>24</sup> (In fact, the last steam-powered train on the Frisco ran between Birmingham and Bessemer, Alabama, in February 1952.<sup>25</sup>)

Although it was retired in 1952, the Frisco kept Engine #4003 until September 1954 when it was donated to the City of Fort Smith.<sup>26</sup> The City of Fort Smith placed the locomotive in Kay Rodgers Park on Midland Boulevard where it remained until c. 2000. At that time, the City donated the locomotive to the Fort Smith Trolley Museum as long as the Museum paid for the cost of locomotive's move. Professional house movers were hired and the move from Kay Rodgers Park to the Museum's grounds was completed c. 2000. Engine #4003 currently resides at the Fort Smith Trolley Museum, and sits among other pieces of rolling stock on a spur off of the original Frisco rail line.<sup>27</sup>

Although Engine #4003 is currently not operational, it has been determined that it is in good condition and could be restored to operating condition. However, the Museum has no plans to restore the locomotive at the present time. The estimated cost of restoration is \$500,000-\$750,000, and the fact that the Museum does not own any track where the locomotive could be run are major obstacles to completing a restoration.<sup>28</sup>

Today, St. Louis San Francisco (Frisco) Railway Steam Locomotive #4003 is a living reminder of Arkansas's rich railroad history, and the rich history of the Frisco's presence in Fort Smith and Northwest Arkansas in the early part of the twentieth century. Frisco Engine #4003 is currently the last remaining Frisco steam locomotive in Arkansas. In addition, Engine #4003 is a rare remnant of the USRA's railroad legacy. The influence of the USRA across the country during and after World War I was extensive with 1,856 locomotives being built to USRA designs during the War and another 3,251 being built after the War.

<sup>23</sup> West, p. 148.

<sup>24</sup> Telephone conversation with Art Martin on August 21, 2003.

<sup>25</sup> Drury, George H. *Guide to North American Steam Locomotives*. Waukesha, WI: Kalmbach Books, 1993, p. 341.

<sup>26</sup> Information on Engine #4003 from [www.steamlocomotive.info](http://www.steamlocomotive.info).

<sup>27</sup> Telephone conversation with Art Martin on August 21, 2003.

<sup>28</sup> Ibid.

United States Department of the Interior  
National Park Service

## National Register of Historic Places Continuation Sheet

Section number 8 Page 6

---

Engine #4003 is one of only eight total remaining USRA locomotives in existence and one of only six remaining USRA 2-8-2-A locomotives in the country. The survival and continued preservation of Engine #4003 is a monument to the dedication of the Fort Smith Trolley Museum to the preservation of Arkansas's railroad past.

### STATEMENT OF SIGNIFICANCE

St. Louis San Francisco (Frisco) Railway Steam Locomotive #4003 is being nominated to the National Register of Historic Places with **statewide significance** under **Criterion C** for its engineering as the only Class USRA1, 2-8-2-A Mikado type freight steam locomotive remaining in Arkansas. The locomotive was a workhorse in freight service on the Frisco for 33 years until more efficient diesel locomotives began to replace steam locomotives. As a result, it is therefore eligible for nomination under **Criterion A** for its association with the role of railroad transportation in Arkansas.

United States Department of the Interior  
National Park Service

## National Register of Historic Places Continuation Sheet

Section number 9 Page 1

---

### BIBLIOGRAPHY

American Society of Mechanical Engineers. *USRA Steam Locomotives: Atlantic Coast Line 1504 and Baltimore and Ohio 4500*. October 23, 1990. Found at: <http://www.asme.org/history/brochures/h147-h148.pdf>.

Collias, Joe G. *Frisco Power*. Crestwood, MO: MM Books, 1984.

*Cram's Township and Railroad Map of Arkansas*. Map. Chicago: George Franklin Cram, 1895.

Drury, George H. *Guide to North American Steam Locomotives*. Waukesha, WI: Kalmbach Books, 1993.

Drury, George H. *The Historical Guide to North American Railroads*. Milwaukee, WI: Kalmbach Books, 1985.

Faulk, Odie B. and Billy Mac Jones. *Fort Smith: An Illustrated History*. Muskogee, OK: Western Heritage Books, 1983.

Huddleston, Eugene L. *Uncle Sam's Locomotives: The USRA and the Nation's Railroads*. Bloomington, IN: Indiana University Press, 2002.

Information on Engine #4003 from [www.steamlocomotive.info](http://www.steamlocomotive.info).

Information on Mikados from [www.steamlocomotive.com](http://www.steamlocomotive.com).

Information on USRA locomotives and Mikados from [www.steamlocomotive.com](http://www.steamlocomotive.com).

Keller, Vagel C., Jr. Book review of *Uncle Sam's Locomotives: The USRA and the Nation's Railroads* by Eugene L. Huddleston. Found at: <http://www.hbs.edu/bhr/archives/bookreviews/77/2003summervkeller.pdf>.

*Map of the Chester, Iron Mountain & Western Railroad and its connections*. Map. New York: G.W. & C.B. Colton & Co., 1881.

Martin, Art, President of the Fort Smith Trolley Museum. Telephone conversation with the author. 21 August 2003.



United States Department of the Interior

National Park Service

## National Register of Historic Places Continuation Sheet

Section number 9 Page 2

---

*Missouri: The WPA Guide to the "Show-Me" State.* St. Louis: John S. Swift Company, 1998 reprint of 1941 publication.

USRA locomotive information found at: <http://www.steamlocomotive.com/misc/usra.html>.

West, Elliott. *The WPA Guide to 1930s Arkansas.* Lawrence, KS: University Press of Kansas, 1987 reprint of 1941 publication.



St. Louis San Francisco (Frisco) Railway Steam Locomotive #4003  
Name of Property

Sebastian County, Arkansas  
County and State

## 10. Geographical Data

Acreage of Property Less than one.

### UTM References

(Place additional UTM references on a continuation sheet.)

1 15 370143 3916502  
Zone Easting Northing  
2 \_\_\_\_\_

3 \_\_\_\_\_  
Zone Easting Northing  
4 \_\_\_\_\_

☐ See continuation sheet

### Verbal Boundary Description

(Describe the boundaries of the property on a continuation sheet.)

### Boundary Justification

(Explain why the boundaries were selected on a continuation sheet.)

## 11. Form Prepared By

name/title Ralph S. Wilcox, National Register & Survey Coordinator  
organization Arkansas Historic Preservation Program date October 13, 2003  
street & number 1500 Tower Building, 323 Center Street telephone (501) 324-9787  
city or town Little Rock state AR zip code 72201

### Additional Documentation

Submit the following items with the completed form:

### Continuation Sheets

### Maps

A **USGS map** (7.5 or 15 minute series) indicating the property's location

A **Sketch map** for historic districts and properties having large acreage or numerous resources.

### Photographs

Representative **black and white photographs** of the property.

### Additional items

(Check with the SHPO or FPO for any additional items.)

### Property Owner

(Complete this item at the request of SHPO or FPO.)

name Fort Smith Trolley Museum  
street & number 100 South 4<sup>th</sup> Street telephone \_\_\_\_\_  
city or town Fort Smith state AR zip code 72901

**Paperwork Reduction Act Statement:** This information is being collected for applications to the National Register of Historic Places to nominate properties for listing or determine eligibility for listing, to list properties, and to amend existing listing. Response to this request is required to obtain a benefit in accordance with the National Historic Preservation Act, as amended (16 U.S.C. 470 *et seq.*)

**Estimated Burden Statement:** Public reporting burden for this form is estimated to average 18.1 hours per response including time for reviewing instructions, gathering and maintaining data, and completing and reviewing the form. Direct comments regarding this burden estimate or any aspect of this form to the Chief, Administrative Services Division, National Park Service, P. O. Box 37127, Washington, DC 20013-7127; and the Office of Management and Budget, Paperwork Reductions Projects (1024-0018), Washington, DC 20303.

United States Department of the Interior  
National Park Service

## National Register of Historic Places Continuation Sheet

Section number 10 Page 1

---

### VERBAL BOUNDARY DESCRIPTION

St. Louis San Francisco Railway (Frisco) Steam Locomotive #4003 is housed at the Fort Smith Trolley Museum at 100 South 4<sup>th</sup> Street in Fort Smith (UTM: 15/370143/3916502).

### BOUNDARY JUSTIFICATION

The boundary contains all of the property that is historically associated with this resource that retains its integrity.

UNITED STATES DEPARTMENT OF THE INTERIOR  
NATIONAL PARK SERVICE

NATIONAL REGISTER OF HISTORIC PLACES  
EVALUATION/RETURN SHEET

REQUESTED ACTION: RESUBMISSION

PROPERTY St. Louis San Francisco (Frisco) Railway Steam Locomotive #4  
NAME: 003

MULTIPLE  
NAME:

STATE & COUNTY: ARKANSAS, Sebastian

DATE RECEIVED: 6/29/04 DATE OF PENDING LIST:  
DATE OF 16TH DAY: DATE OF 45TH DAY: 8/12/04  
DATE OF WEEKLY LIST:

REFERENCE NUMBER: 04000500

DETAILED EVALUATION:

☒ ACCEPT ☐ RETURN ☐ REJECT ☐ DATE

ABSTRACT/SUMMARY COMMENTS:

Property is significant statewide under criterion A in the area of transportation and under criterion C for its engineering design. The locomotive is the sole example of its type in Arkansas. Exemplifies the era in which steam locomotives were the standard workhorses of the railroads before the advent of dieselization. Property retains integrity and conveys the history of transportation and engineering in Arkansas.

RECOM./CRITERIA A, C

REVIEWER Daniel Vivian

DISCIPLINE Historian

TELEPHONE (202) 354-2252

DATE 7/12/04

DOCUMENTATION see attached comments Y/N see attached SLR Y/N



## The Department of Arkansas Heritage

Mike Huckabee, Governor  
Cathie Matthews, Director

Arkansas Arts Council

Arkansas Natural Heritage  
Commission

Historic Arkansas Museum

Delta Cultural Center

Old State House Museum



### Arkansas Historic Preservation Program

1500 Tower Building

323 Center Street

Little Rock, AR 72201

(501)324-9880

fax: (501)324-9184

tdd: (501)324-9811

e-mail:

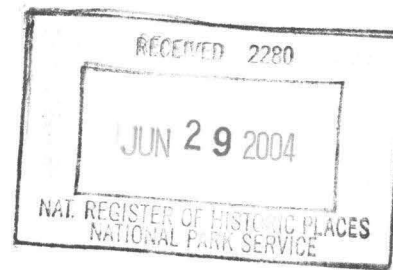
info@arkansaspreservation.org

website:

www.arkansaspreservation.org

June 28, 2004

Carol D. Shull  
Chief of Registration  
United States Department of the Interior  
National Register of Historic Places  
National Park Service  
8th Floor  
1201 Eye Street, NW  
Washington, DC 20005



RE: St. Louis San Francisco (Frisco) Railway Steam  
Locomotive #4003 – Fort Smith, Sebastian County, Arkansas

Dear Carol:

We are enclosing for your review the revised above-referenced nomination. The Arkansas Historic Preservation Program has complied with all applicable nominating procedures and notification requirements in the nomination process.

If you need further information, please call Ralph S. Wilcox of my staff at (501) 324-9787. Thank you for your cooperation in this matter.

Sincerely,

Cathie Matthews  
State Historic Preservation Officer

CM:rsw

Enclosure

An Equal Opportunity Employer



PRINTED WITH  
SOY INK





ST. LOUIS SAN FRANCISCO (FRISCO) RAILWAY STEAM LOCOMOTIVE #4003

SEBASTIAN COUNTY, AR

ZAC COTHREN

AUGUST 2003

ARKANSAS HISTORIC PRESERVATION PROGRAM, LITTLE ROCK, AR

NORTHEAST SIDE, LOOKING SOUTHWEST





ST. LOUIS SAN FRANCISCO (FRISCO) RAILWAY STEAM LOCOMOTIVE #4003

SEBASTIAN COUNTY, AR

ZAC COTHREN

AUGUST 2003

ARKANSAS HISTORIC PRESERVATION PROGRAM, LITTLE ROCK, AR  
SOUTHWEST SIDE, LOOKING NORTHEAST.



ST. LOUIS SAN FRANCISCO (FRISCO) RAILWAY STEAM LOCOMOTIVE #4003

SEBASTIAN COUNTY, AR

ZAC COTHREN

AUGUST 2003

ARKANSAS HISTORIC PRESERVATION PROGRAM, LITTLE ROCK, AR

SOUTHEAST SIDE LOOKING WEST



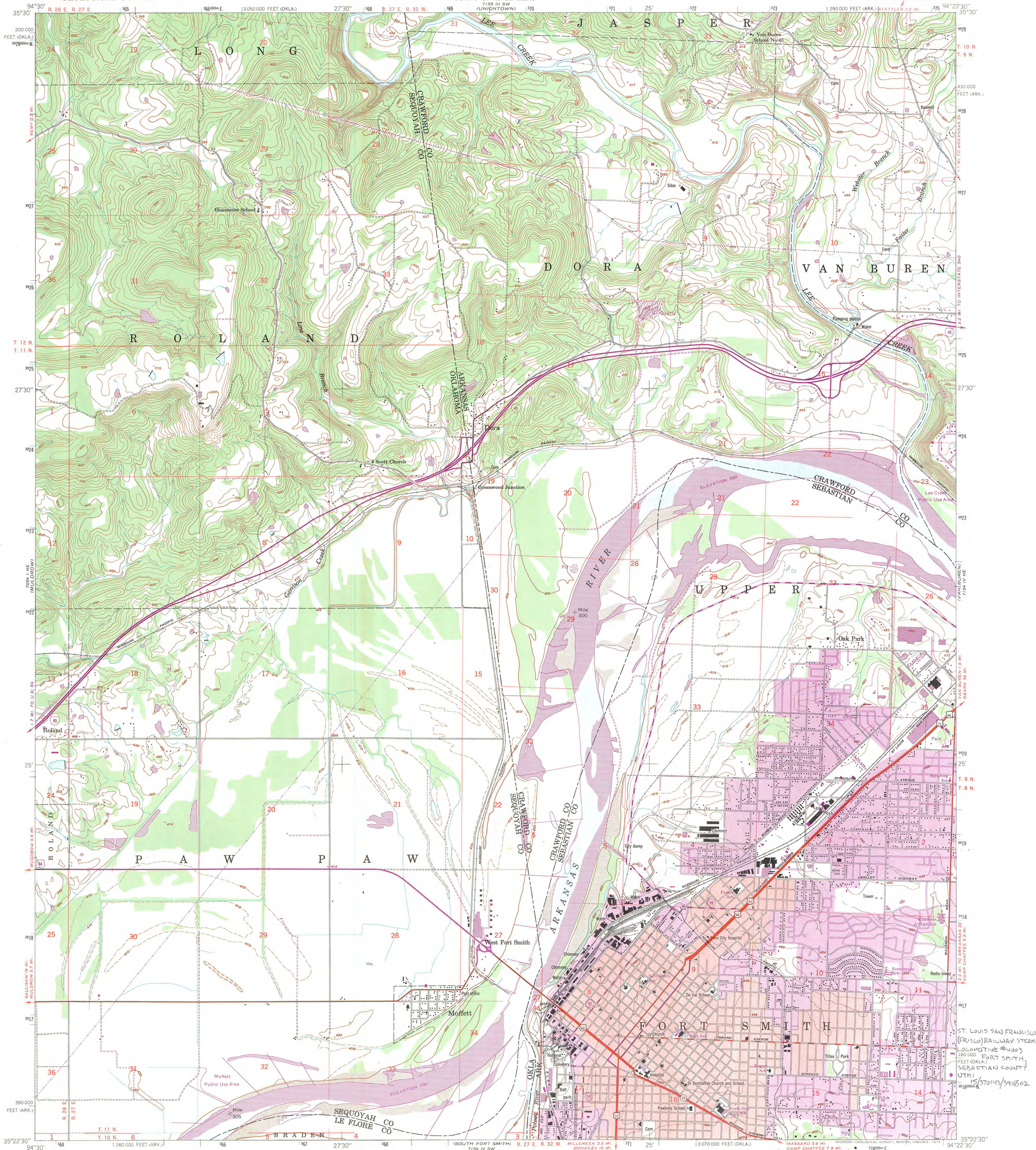


ST. LOUIS SAN FRANCISCO (FRISCO) RAILWAY STEAM LOCOMOTIVE #4003  
SEBASTIAN COUNTY, AR  
ZAC COTHREN

AUGUST 2003

ARKANSAS HISTORIC PRESERVATION PROGRAM, LITTLE ROCK, AR  
NORTHWEST SIDE LOOKING SOUTH





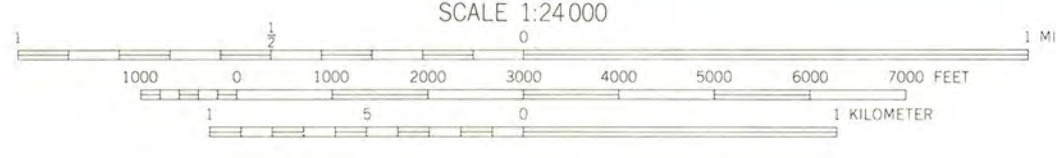
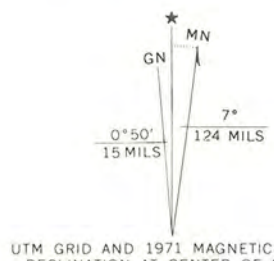
Mapped by the Army Map Service  
Published for civil use by the Geological Survey  
Control by CE, USGS, and USC&GS

Topography from aerial photographs by multiplex methods  
Aerial photographs taken 1946. Field check 1947

Polyconic projection. 1927 North American datum  
10,000-foot grids based on Arkansas coordinate system,  
north zone and Oklahoma coordinate system, north zone  
1000-meter Universal Transverse Mercator grid ticks,  
zone 15, shown in blue

Red tint indicates area in which only landmark buildings are shown

No distinction is made between dwellings, barns  
commercial, and industrial buildings



SCALE 1:24,000  
CONTOUR INTERVAL 20 FEET  
DASHED LINES REPRESENT HALF-INTERVAL CONTOURS  
NATIONAL GEODETIC VERTICAL DATUM OF 1929

THIS MAP COMPLIES WITH NATIONAL MAP ACCURACY STANDARDS  
FOR SALE BY U. S. GEOLOGICAL SURVEY, DENVER, COLORADO 80225, OR RESTON, VIRGINIA 22092  
ARKANSAS GEOLOGICAL COMMISSION, LITTLE ROCK, ARKANSAS 72201,  
AND OKLAHOMA GEOLOGICAL SURVEY, NORMAN, OKLAHOMA 73069  
A FOLDER DESCRIBING TOPOGRAPHIC MAPS AND SYMBOLS IS AVAILABLE ON REQUEST



QUADRANGLE LOCATION

ROAD CLASSIFICATION  
Heavy-duty ——— Light-duty ———  
Medium-duty ——— Unimproved dirt ———  
○ Interstate Route ○ U. S. Route ○ State Route

FORT SMITH, ARK.—OKLA.  
NW 1/4 VAN BUREN 15' QUADRANGLE  
N 3522.5—W 9422.5/7.5

1947  
PHOTOREVISED 1971

AMS 7154 IV NW—SERIES V884

Revisions shown in purple compiled by the Geological Survey from  
aerial photographs taken 1971. This information not field checked  
Purple tint indicates extension of urban areas

ST. LOUIS SAN FRANCISCO  
[FRISCO] RAILWAY STEAM  
LOCOMOTIVE #4003  
160,000 FEET (OKLA.)  
SEBASTIAN COUNTY  
UTM:  
15/370143/391602