



TIFFANY CENTER

TIFFANY CENTER

TIFFANY CENTER

ONE WAY
→

HOTEL

Neighbors of Woodcraft Building
1410 SW Morrison Street
Portland, Multnomah County, Oregon

DESCRIPTION: Exterior View, North
Facade from NE

HERITAGE INVESTMENT CORPORATION
123 N.W. SECOND AVENUE, SUITE 200
PORTLAND, OREGON 97209

Heritage Photo - 1995

Photo 1 of 14



TIFFANY CENTER

NO ENTRY

Neighbors of Woodcraft Building
1410 SW Morrison Street
Portland, Multnomah County, Oregon

DESCRIPTION: Exterior View, East
Facade from NE

HERITAGE INVESTMENT CORPORATION
123 N.W. SECOND AVENUE, SUITE 200
PORTLAND, OREGON 97209

Heritage Photo - 1995

Photo 2 of 14



TIFFANY CENTER
THE F&C SHOPPING CENTER

Neighbors of Woodcraft Building
1410 SW Morrison Street
Portland, Multnomah County, Oregon

DESCRIPTION: Exterior View, South
Facade from S

HERITAGE INVESTMENT CORPORATION
123 N.W. SECOND AVENUE, SUITE 200
PORTLAND, OREGON 97209

Heritage Photo - 1995

Photo 3 of 14



TIFFANY CENTER

• RECEPTION HALLS • MEETING ROOMS
• EXHIBIT • BANQUET HALLS • BALLROOMS

HALLWAY
GARAGE
OPEN

TWO WAY
TRAFFIC
KEEP

Neighbors of Woodcraft Building
1410 SW Morrison Street
Portland, Multnomah County, Oregon

DESCRIPTION: Exterior View, West
Facade from SW

HERITAGE INVESTMENT CORPORATION
123 N.W. SECOND AVENUE, SUITE 200
PORTLAND, OREGON 97209

Heritage Photo - 1995

Photo 4 of 14



Neighbors of Woodcraft Building
1410 SW Morrison Street
Portland, Multnomah County, Oregon

DESCRIPTION: Exterior Detail, North
Facade Brickwork from N

HERITAGE INVESTMENT CORPORATION
123 N.W. SECOND AVENUE, SUITE 200
PORTLAND, OREGON 97209

Heritage Photo - 1995

Photo 5 of 14



Neighbors of Woodcraft Building
1410 SW Morrison Street
Portland, Multnomah County, Oregon

DESCRIPTION: Exterior Detail, North
Facade Doorway from N

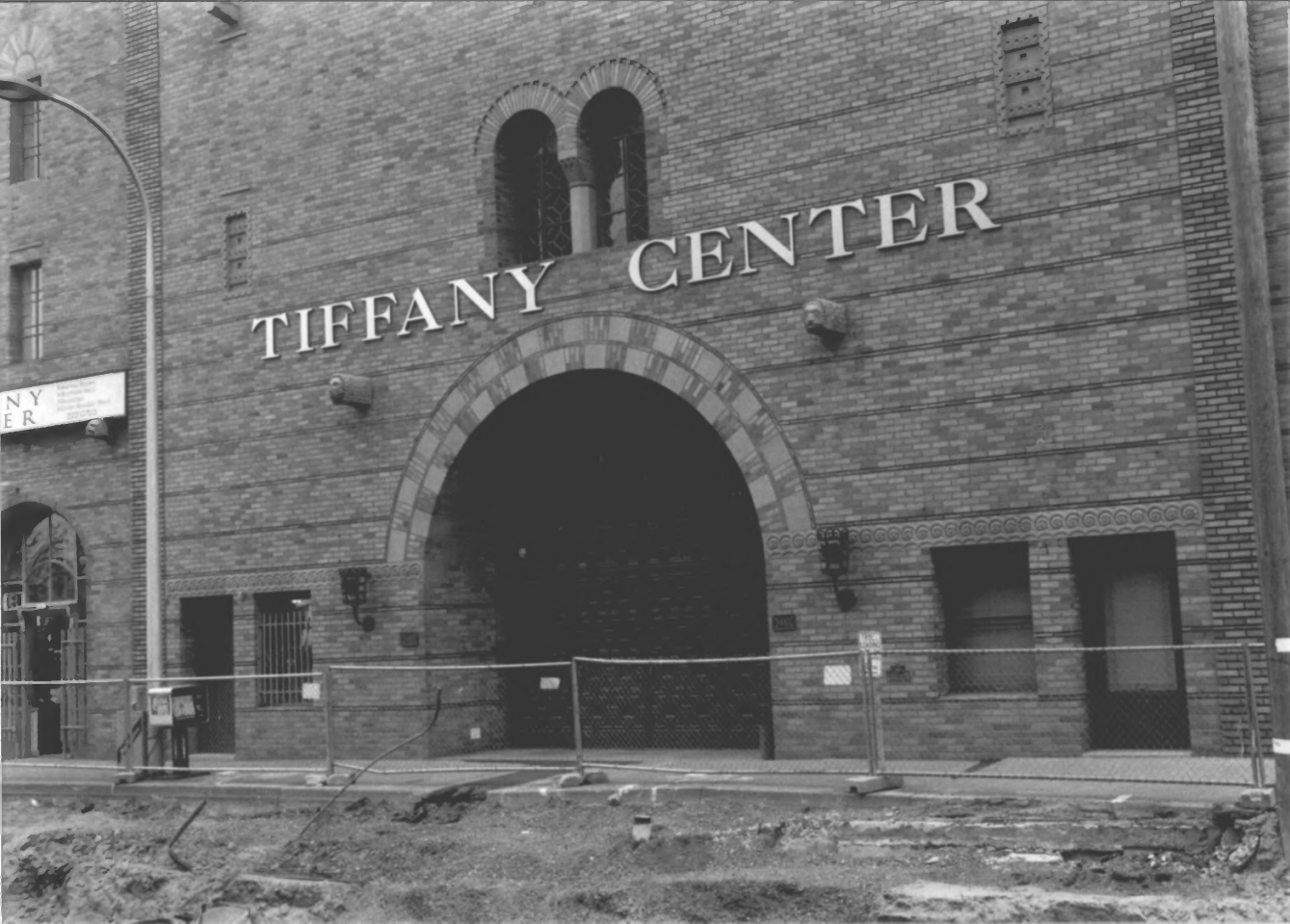
HERITAGE INVESTMENT CORPORATION
123 N.W. SECOND AVENUE, SUITE 200
PORTLAND, OREGON 97209

Heritage Photo - 1995

Photo 6 of 14

TIFFANY CENTER

NY
ER



Neighbors of Woodcraft Building
1410 SW Morrison Street
Portland, Multnomah County, Oregon

DESCRIPTION: Exterior Detail, Main
Entry (North Facade) from NW

HERITAGE INVESTMENT CORPORATION
123 N.W. SECOND AVENUE, SUITE 200
PORTLAND, OREGON 97209

Heritage Photo - 1995

Photo 7 of 14



PHONE

88

MEMBERSHIP OFFICE
TIFANY CENTER
1000 W. 10TH ST. SUITE 100
DENVER, CO 80202
LARGE & SMALL EVENTS WELCOME
SOCIAL EVENTS
CONFERENCES
MEETINGS
STAGED THEATRE
SEMINARS
EXHIBITS
CALL 303-733-1111

Neighbors of Woodcraft Building
1410 SW Morrison Street
Portland, Multnomah County, Oregon

DESCRIPTION: Interior View, Lobby

HERITAGE INVESTMENT CORPORATION
123 N.W. SECOND AVENUE, SUITE 200
PORTLAND, OREGON 97209

Heritage Photo - 1995

Photo 8 of 14



Neighbors of Woodcraft Building
1410 SW Morrison Street
Portland, Multnomah County, Oregon

DESCRIPTION: Interior Detail, Lobby
Light Fixture and Medallion

HERITAGE INVESTMENT CORPORATION
123 N.W. SECOND AVENUE, SUITE 200
PORTLAND, OREGON 97209

Heritage Photo - 1995

Photo 9 of 14



Neighbors of Woodcraft Building
1410 SW Morrison Street
Portland, Multnomah County, Oregon

DESCRIPTION: Interior View, Upper
Floor Lobby (typical)

HERITAGE INVESTMENT CORPORATION
123 N.W. SECOND AVENUE, SUITE 200
PORTLAND, OREGON 97209

Heritage Photo - 1995

Photo 10 of 14



GENTLEMEN

THE DOOR TO HELL

Neighbors of Woodcraft Building
1410 SW Morrison Street
Portland, Multnomah County, Oregon

DESCRIPTION: Interior View, Upper
Floor Reception Room (typical)

HERITAGE INVESTMENT CORPORATION
123 N.W. SECOND AVENUE, SUITE 200
PORTLAND, OREGON 97209

Heritage Photo - 1995

Photo 11 of 14



67-58

Neighbors of Woodcraft Building
1410 SW Morrison Street
Portland, Multnomah County, Oregon

DESCRIPTION: Interior View, Lodge
Room

HERITAGE INVESTMENT CORPORATION
123 N.W. SECOND AVENUE, SUITE 200
PORTLAND, OREGON 97209

Heritage Photo - 1995

Photo 12 of 14



Neighbors of Woodcraft Building
1410 SW Morrison Street
Portland, Multnomah County, Oregon

DESCRIPTION: Interior View, Lodge
Room/Dining Room

HERITAGE INVESTMENT CORPORATION
123 N.W. SECOND AVENUE, SUITE 200
PORTLAND, OREGON 97209

Heritage Photo - 1995

Photo 13 of 14



Neighbors of Woodcraft Building
1410 SW Morrison Street
Portland, Multnomah County, Oregon

DESCRIPTION: Interior Detail, Doorway
(typical)

HERITAGE INVESTMENT CORPORATION
123 N.W. SECOND AVENUE, SUITE 200
PORTLAND, OREGON 97209

Heritage Photo - 1995

Photo 14 of 14