



HIDDEN
DRIVEWAY

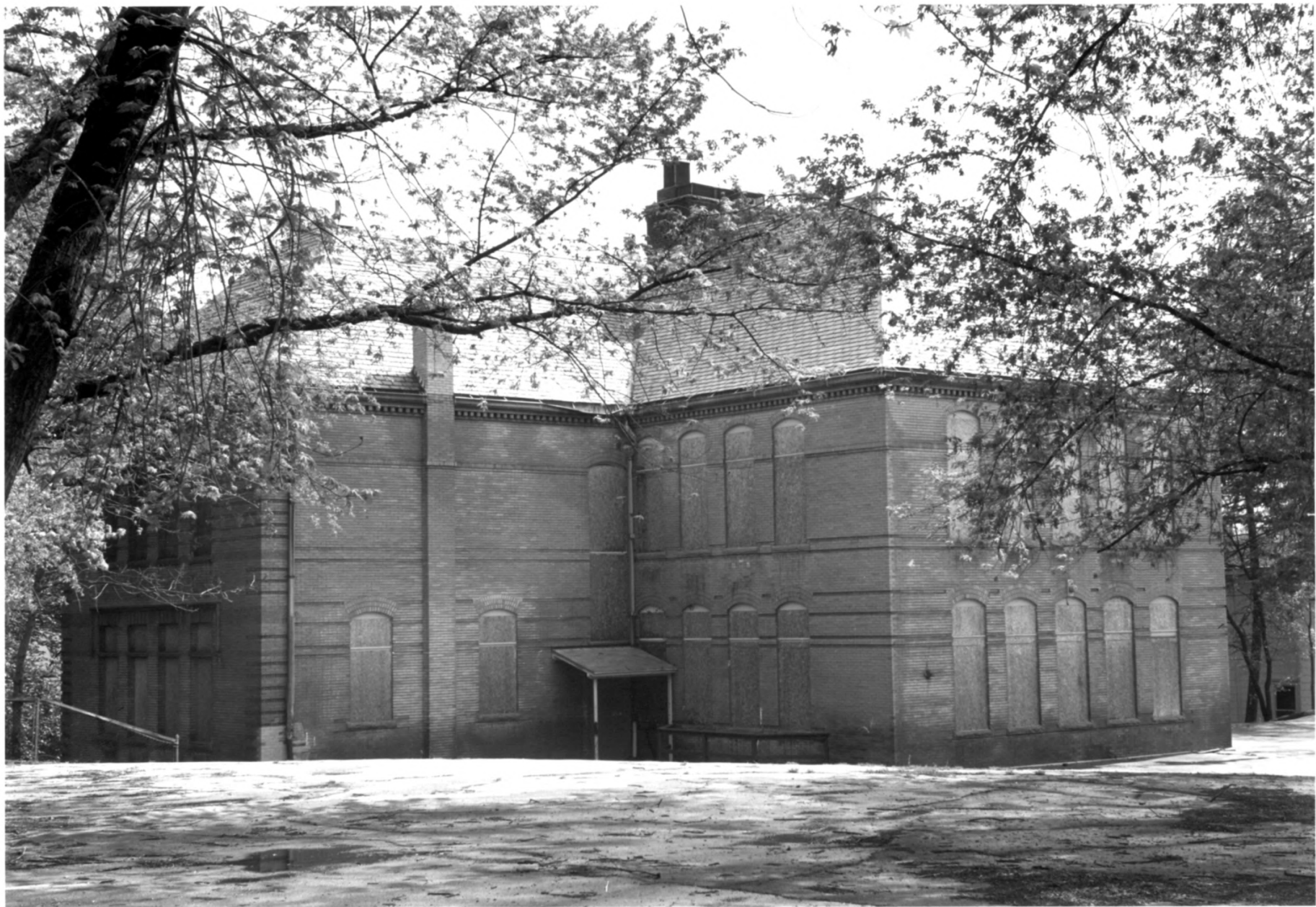
BROAD STREET SCHOOL

Norwich, CT

HRC Photo, 5/83

Negative filed with Conn.
Hist. Comm., Hartford

Facade, view north



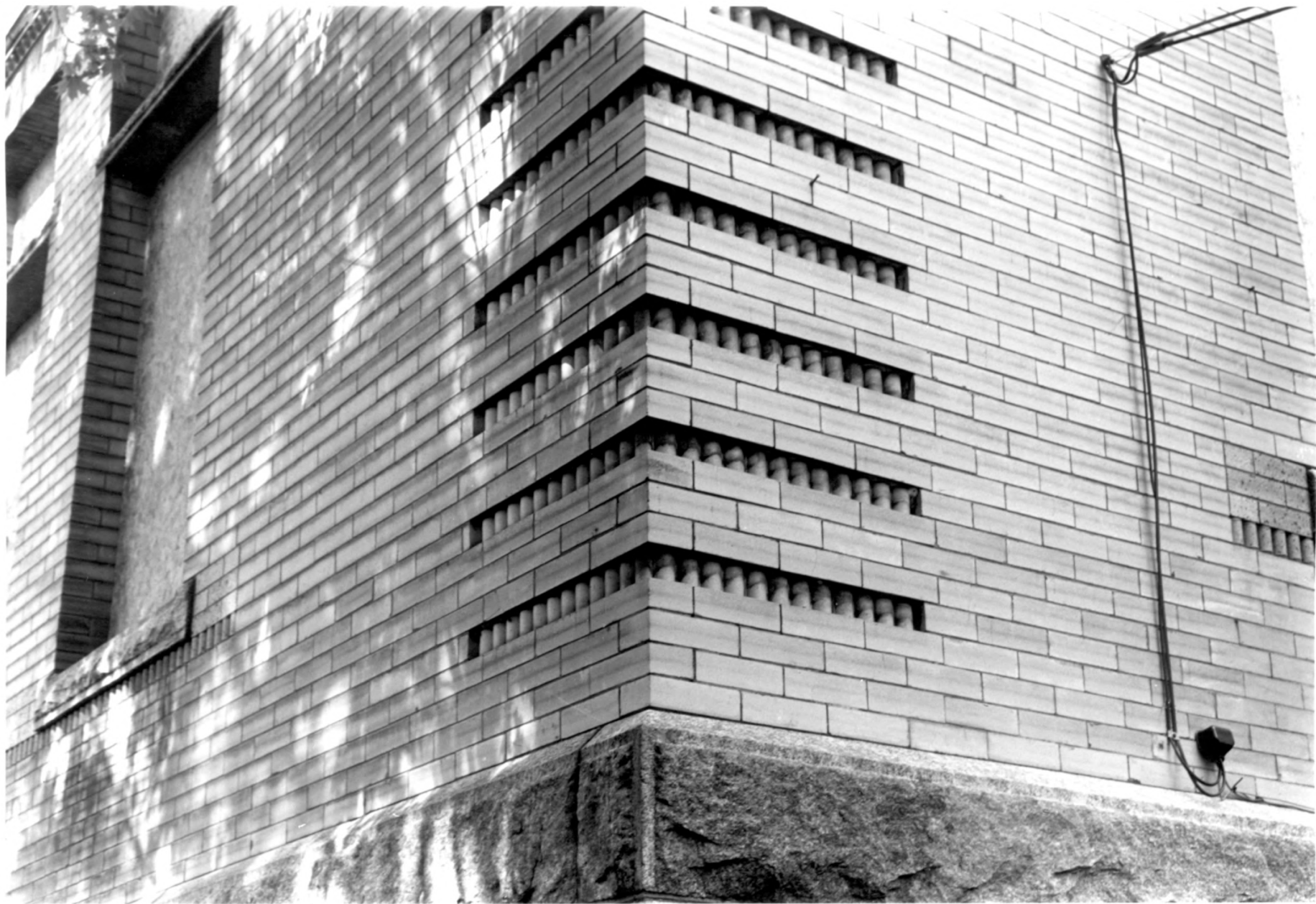
BROAD STREET SCHOOL

Norwich, CT

HRC Photo, 5/83

Negative filed with Conn.
Hist. Comm., Hartford

Rear elevation, with rear
wing to right;
view southwest # 2



BROAD STREET SCHOOL

Norwich, CT

HRC Photo, 5/83

Negative filed with Conn.
Hist. Comm., Hartford

Corner of facade, with
molded brick in imitation
of quoins

3



BROAD STREET SCHOOL

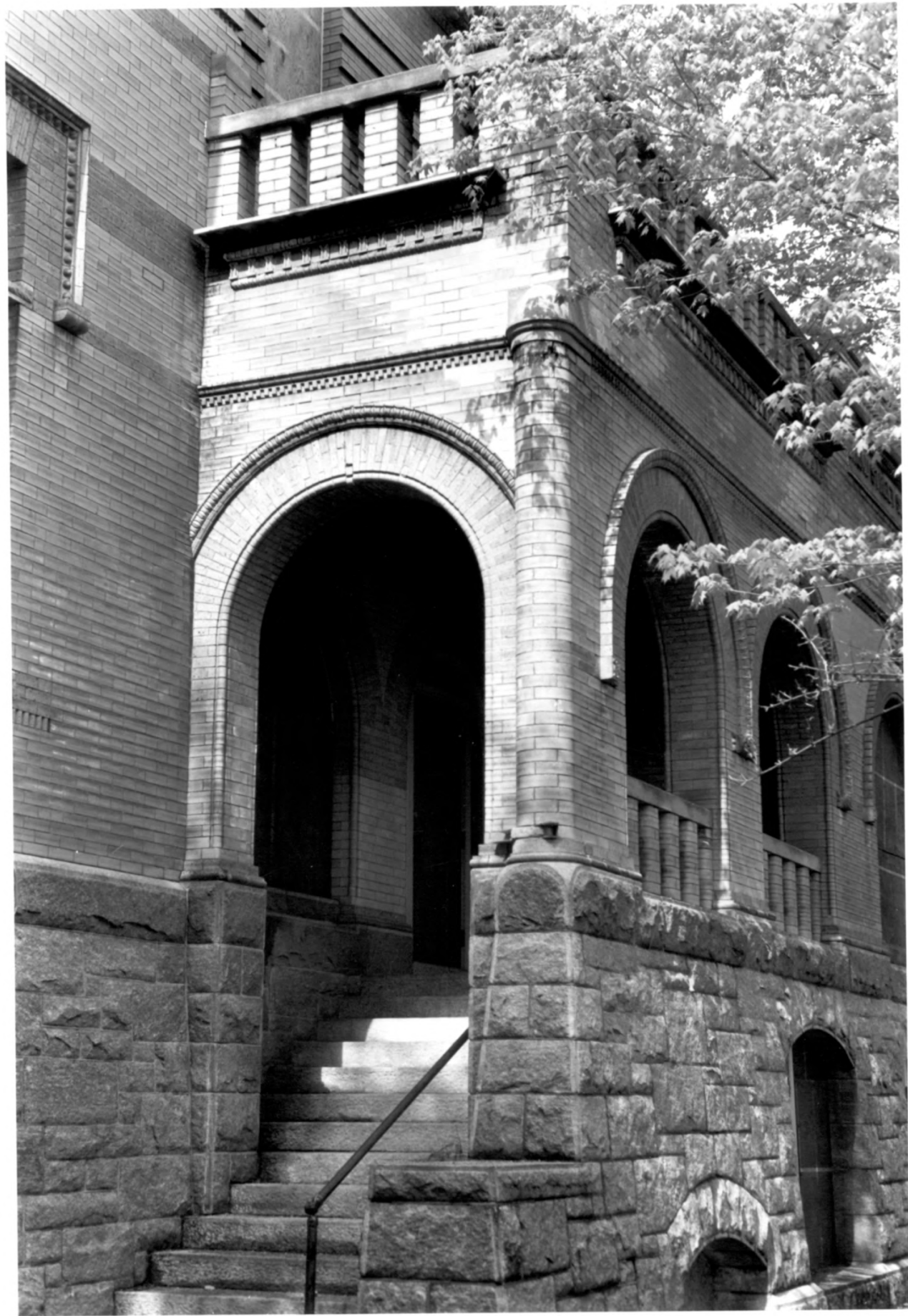
Norwich, CT

HRC Photo, 5/83

Negative filed with Conn.
Hist. Comm., Hartford

Facade, end pavilion window
treatment, view north

4



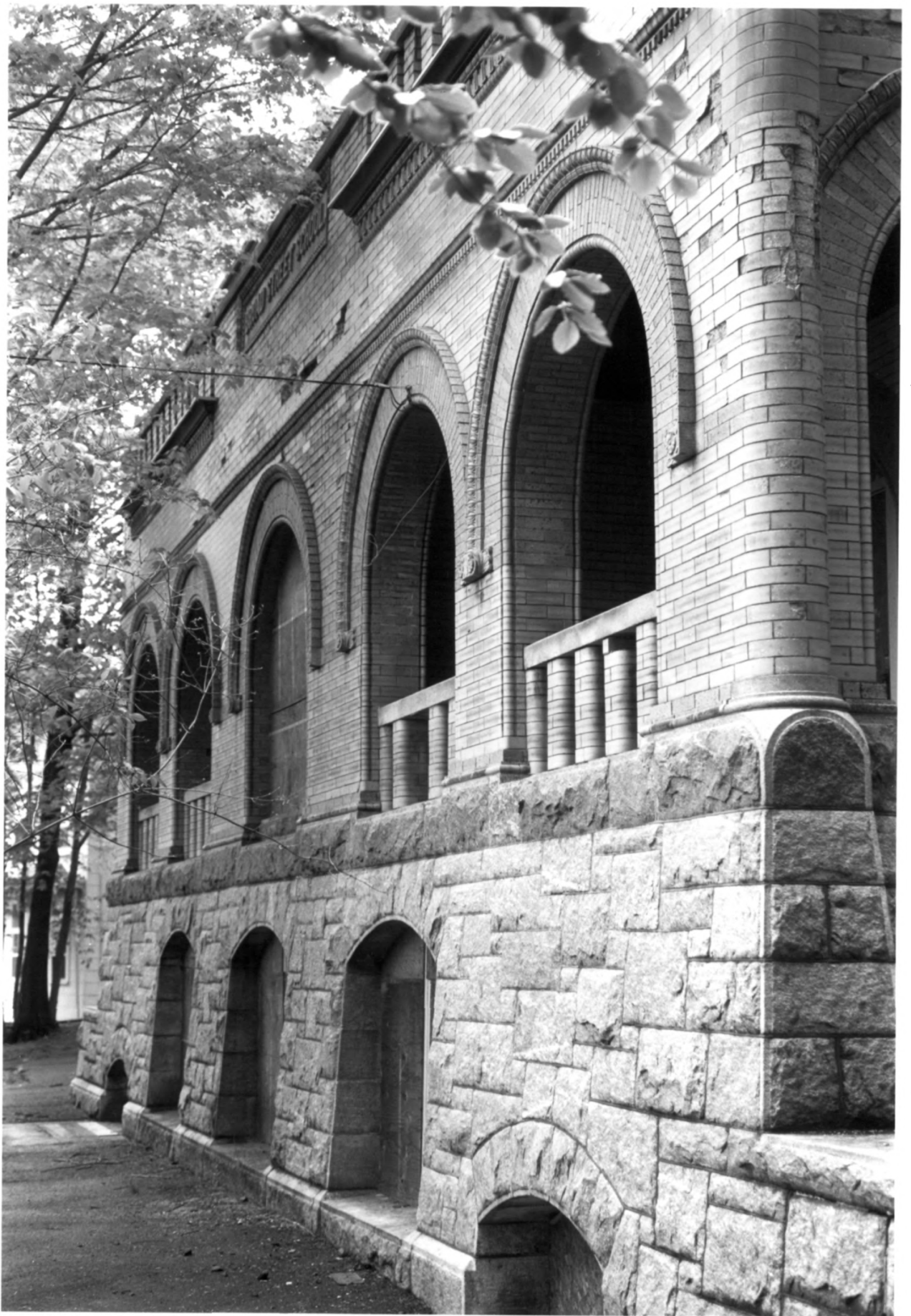
BROAD STREET SCHOOL

Norwich, CT

HRC Photo, 5/83

Negative filed with Conn.
Hist. Comm., Hartford

Facade, side of entry
pavilion; view northeast # 6



BROAD STREET SCHOOL

Norwich, CT

HRC Photo, 5/83

Negative filed with Conn.
Hist. Comm., Hartford

Facade, entry pavilion
view northwest



CAMP INSURANCE AGENCY
A. J. CAMP
1000 10th St. S.E.
W. 100 100 100 100 100
100 100 100 100 100
100 100 100 100 100
100 100 100 100 100

BROAD STREET SCHOOL

Norwich, CT

HRC Photo, 5/83

Negative filed with Conn.
Hist. Comm., Hartford

Interior, library with
plaster walls and oak
woodwork

7



BROAD STREET SCHOOL

Norwich, CT

HRC Photo, 5/83

Negative filed with Conn.

Hist. Comm., Hartford

Typical classroom interior
showing floors, ceilings and
blocked-off windows # 8



BROAD STREET SCHOOL

Norwich, CT

HRC Photo, 5/83

Negative filed with Conn.
Hist. Comm., Hartford

Main stairway, with iron
steps and oak rail on iron
balusters and newel # 9