A black and white photograph of a two-story brick building. The second floor has four arched windows with decorative pediments. A white banner with black text is stretched across the front of the building. Below the banner is a striped awning. The ground floor has a dark entrance and a window with a 'SHOE SALE' sign. A car is parked on the street to the right.

Main Street Shoe Company

SHOE
SALE

SALE

Timmerman - BURD BLDG Henry W

118 S. Main

Mt. Pleasant IA

DAVE CORDES

JANUARY 1991

SWPO

Facade, looking due E.

#1

T.A. BEREMAN
LAW OFFICE

82
SCHUBERT
SHOE
STORE



Timmerman - Burd Bldg Henry de

118 S. Main

Mt. Pleasant, Ia

Historic Photo - 1892

Facade w/ Henry Timmerman's employee
#2

Main Street Shoe Company

SHOE
SALE

SALE

OPEN

Martha Brown Ltd.



Timmerman - Burd Bldg Henry Co

118 S. Main

Mt. Pleasant, IA

DAVE CORDES

JANUARY 1991

SHPO

First floor facade, looking E.

#3

J. M. BURD SHOE CO.

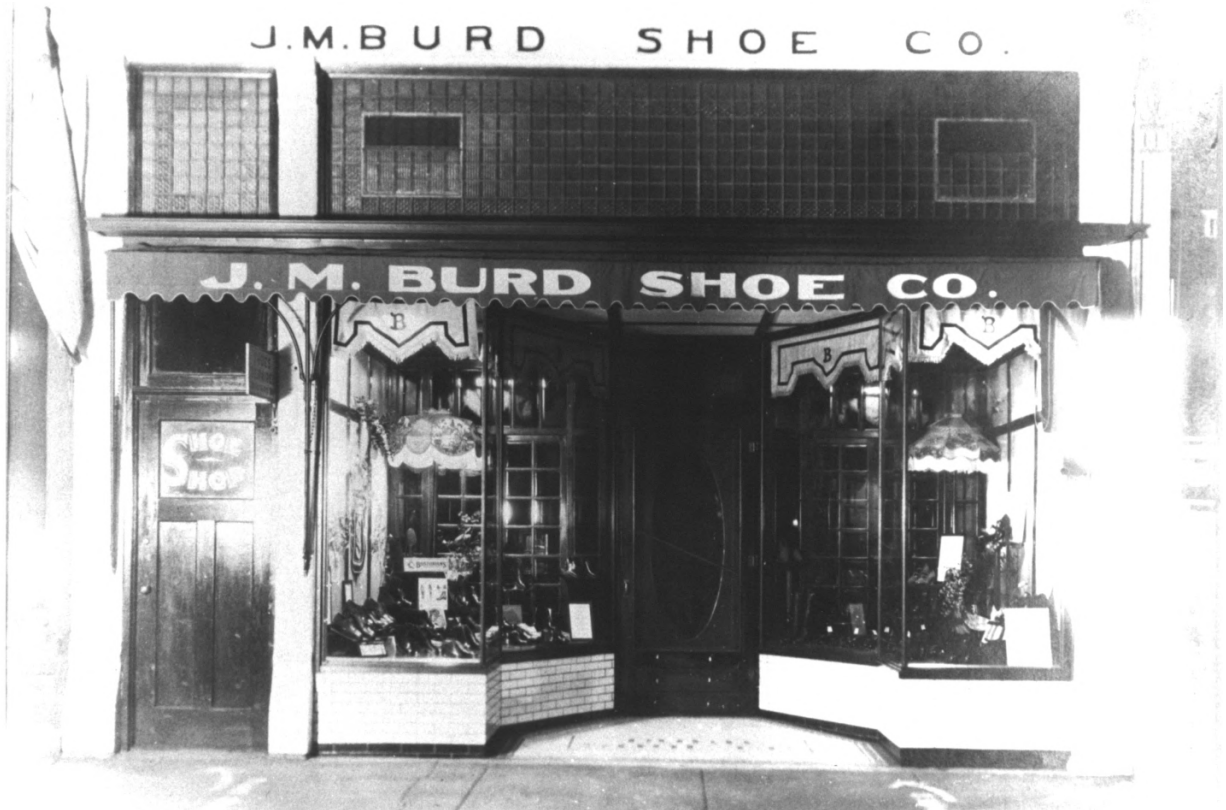
J. M. BURD SHOE CO.

SHOE SHOP

B

B

B



Timmerman - Bard Bldg

Henry a

118 S. Main

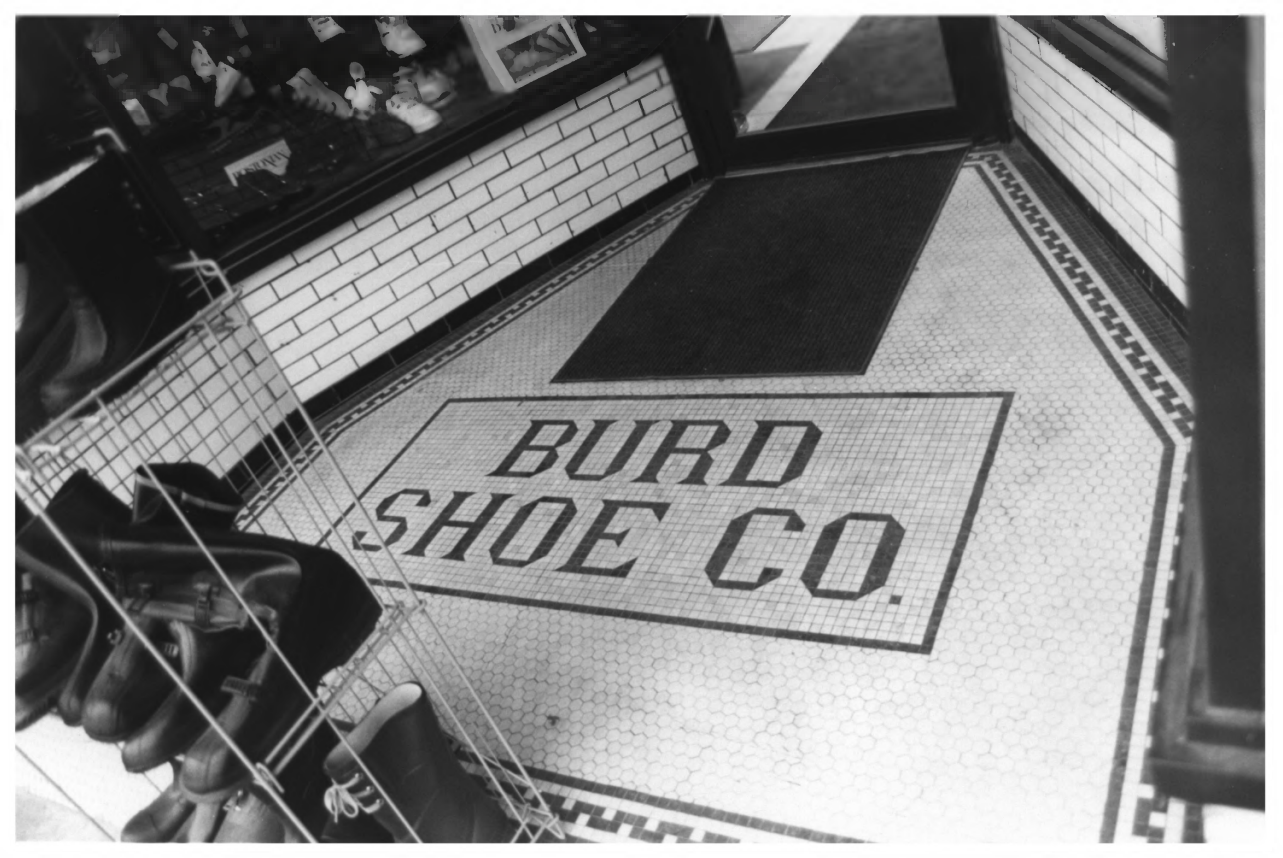
Mt. Pleasant, Ia

Historic Photo 1920

First Floor Facade w/J.M. Bard signs & entry

#4

**BURD
SHOE CO.**



Timmerman - Burd Bldg

Henry Co

118 S. Main

Mt. Pleasant, Ia

Dave Cordes

January 1991

SHPO

Detail: Burd Shoe Co. panel intiled
entry.

#5



Timmerman-Burd Bldg

Henry co

118 S. Main

Mt. Pleasant, Ia

Dave Cordes

January 1991

SNPO

Detail: Tops of 2nd floor windows & metal
cornice.

#6



A black and white photograph of a building facade. A sign for 'Main Street SHOE Company' is mounted on the wall. The sign features the word 'SHOE' in a large, stylized font with a shoe icon inside the letter 'O'. Below the sign is a dark door. To the right, a brick building with a window is visible. In the foreground, the rear of a car and the front of a white van are partially visible. A utility pole with wires is on the right side of the image.

Main Street
SHOE
Company
118 S MAIN ST

Timmerman-Burd Bldg Henry, Ia

118 S. Main

Mt. Pleasant, Ia

Dave Cordes

January 1991

SHPO

East (rear) elevation showing single story
concrete block addition.

#7