



NATCHEZ ON-TOP-OF-THE-HILL HISTORIC DISTRICT

Natchez, Adams County, Mississippi

Library of Congress - 1864

Library of Congress (Drawer 138, Sheet 39)

SEP 17 1979

The town of Natchez as shown on a portion of
the "Map of the Defences of Natchez and
Vicinity, Capt. John M. Wilson, Chief En-
gineer, ... 1864."

JUL 30 1979

Photo 1 of 77



NATCHEZ ON-TOP-OF-THE-HILL HISTORIC DISTRICT
Natchez, Adams County, Mississippi
Henry C. Norman - ca. 1880
Myrtle Bank Galleries, 408 N. Pearl St.,
Natchez, MS 39120

The northerly part of town, as viewed from
the steeple of St. Mary's Cathedral
(element #588) on the SE corner of Main
and Union Sts., looking N up Main St.

Photo 2 of ~~SEP 17 1979~~

JUL 30 1979

COPYRIGHTED

DO NOT PUBLISH WITHOUT
PERMISSION
OF OWNERS
JOAN W. GANDY & THOMAS H. GANDY
408 N. PEARL ST.
NATCHEZ, MS 39120



NATCHEZ ON-TOP-OF-THE-HILL HISTORIC DISTRICT
Natchez, Adams County, Mississippi
Henry C. Norman - ca. 1880
Myrtle Bank Galleries, 408 N. Pearl St.,
Natchez, MS 39120

The center part of town as viewed from the
steeple of St. Mary's Cathedral (element
#588) on the SE corner of Union and Main
Sts., looking NW with Main St. running
from lower right to upper left.

Photo 3 of 77

JUL 30 1979

SEP 17 1979

COPYRIGHTED

DO NOT PUBLISH WITHOUT
PERMISSION
OF OWNERS

JOAN W. GANDY & THOMAS H. GANDY
408 N. PEARL ST.
NATCHEZ, MS 39120



NATCHEZ ON-TOP-OF-THE-HILL HISTORIC DISTRICT
Natchez, Adams County, Mississippi
Henry C. Norman - Before 1886 (ca.1880 ?)
Myrtle Bank Galleries, 408 N. Pearl St.,
Natchez, MS 39120

The W side of the 100 block of N Commerce
St., viewed from the NE corner of N Com-
merce and Franklin Sts., looking SW
toward Main St.

Photo 4 of 77

SEP 17 1979

JUL 30 1979

COPYRIGHTED

DO NOT PUBLISH WITHOUT
PERMISSION
OF OWNERS

JOAN W. GANDY & THOMAS H. GANDY
408 N. PEARL ST.
NATCHEZ, MS 39120

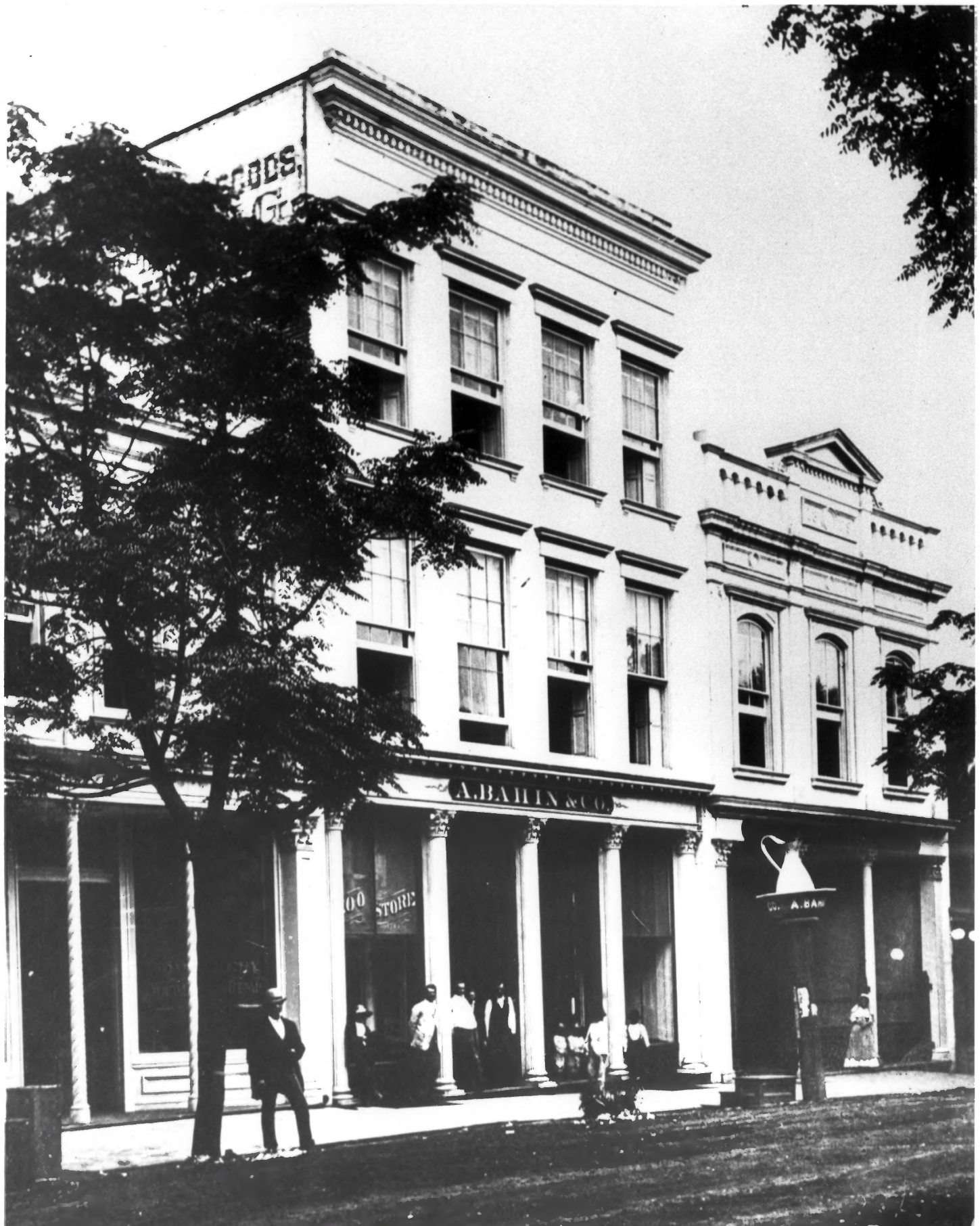


NATCHEZ ON-TOP-OF-THE-HILL HISTORIC DISTRICT
Natchez, Adams County, Mississippi
Henry C. Norman - 1886-ca.1900
Myrtle Bank Galleries, 408 N. Pearl St.,
Natchez, MS 39120
The S side of the 500 block of Franklin St.,
between Locust St. and N Union St.,
viewed from the N side of Franklin St.
near its intersection with N Commerce St.,
looking SE
Photo 5 of 77

SEP 17 1979 JUL 30 1979

COPYRIGHTED

DO NOT PUBLISH WITHOUT
PERMISSION
OF OWNERS
JOAN W. GANDY & THOMAS H. GANDY
408 N. PEARL ST.
NATCHEZ, MS 39120



GOODS
GIL

A. BATHIN & CO.

GOOD STORE

A. BATHIN

NATCHEZ ON-TOP-OF-THE-HILL HISTORIC DISTRICT
Natchez, Adams County, Mississippi
Henry C. Norman - ca. 1880
Myrtle Bank Galleries, 408 N Pearl St.,
Natchez, MS 39120
Elements 271 & 273 at 408 & 410 Main St.,
viewed from across Main St., looking SW.
Photo 6 of 77

SEP 17 1979

JUL 30 1979

COPYRIGHTED

DO NOT PUBLISH WITHOUT
PERMISSION
OF OWNERS
JOAN W. GANDY & THOMAS H. GANDY
408 N. PEARL ST.
NATCHEZ, MS 39120



NATCHEZ ON-TOP-OF-THE-HILL HISTORIC DISTRICT

Natchez, Adams County, Mississippi

Mary W. Miller - May 20, 1979

The Historic Natchez Foundation

P. O. Box 1761, Natchez, MS 39120

Cherokee, element 183, 217 High St., front
viewed from High St., looking N.

Photo #7 of 77

(Negative #3.12)

SEP 17 1979

JUL 30 1979



NATCHEZ ON-TOP-OF-THE-HILL HISTORIC DISTRICT

Natchez, Adams County, Mississippi

Mary W. Miller - May 20, 1979

The Historic Natchez Foundation

P. O. Box 1761, Natchez, MS 39120

Choctaw, element 611, 310 N Wall St., front
viewed from High St., looking SW.

Photo #8 of 77

(Negative #5.2)

SEP 17 1979

JUL 30 1979



NATCHEZ ON-TOP-OF-THE-HILL HISTORIC DISTRICT

Natchez, Adams County, Mississippi

Mary W. Miller - May 20, 1979

The Historic Natchez Foundation,

P. O. Box 1761, Natchez, MS 39120

Myrtle Terrace, element 391, 310 N Pearl St.,

front viewed from Pearl St., looking W.

Photo #9 of 77

(Negative #5.32A)

SEP 17 1979

JUL 30 1979



NATCHEZ ON-TOP-OF-THE-HILL HISTORIC DISTRICT

Natchez, Adams County, Mississippi

Mary W. Miller - May 20, 1979

The Historic Natchez Foundation

P. O. Box 1761, Natchez, MS 39120

Dr. Dubs Townhouse, element 392, 311 N. Pearl

St., side view from across High St. in the

front yard of Stanton Hall (element 188),

looking S.

Photo #10 of 77

SEP 17 1979

JUL 30 1979

(Negative #9.18A)



NATCHEZ ON-TOP-OF-THE-HILL HISTORIC DISTRICT

Natchez, Adams County, Mississippi

Mary W. Miller - May 20, 1979

The Historic Natchez Foundation

P. O. Box 1761, Natchez, MS 39120

JUL 30 1979

Stanton Hall, element 188, 401 High St.,
front and E side viewed from SE corner
of High and N Commerce Sts., looking NW.

Photo #11 of 77

(Negative 8.13A)

SEP 17 1979



NATCHEZ ON-TOP-OF-THE-HILL HISTORIC DISTRICT

Natchez, Adams County, Mississippi

Mary W. Miller - May 20, 1979

The Historic Natchez Foundation

P. O. Box 1761, Natchez, MS 39120

Element 199, 615 High St., front and W side
viewed from High St., looking NE.

Photo #12 of 77

(Negative #1.1)

JUL 30 1979

SEP 17 1979



NATCHEZ ON-TOP-OF-THE-HILL HISTORIC DISTRICT

Natchez, Adams County, Mississippi

Mary W. Miller - May 20, 1979

The Historic Natchez Foundation

P. O. Box 1761, Natchez, MS 39120

Element 200, 617 High St., front and E side
viewed from SE corner of High & N Rankin
Sts., looking NW, with frame store in rear
yard and with elements 485 & 486 on N
Rankin St. in background.

Photo #13 of 77

(Negative #1.6)

SEP 17 1979

JUL 30 1979



NATCHEZ ON-TOP-OF-THE-HILL HISTORIC DISTRICT

Natchez, Adams County, Mississippi

Mary W. Miller - May 20, 1979

The Historic Natchez Foundation

P. O. Box 1761, Natchez, MS 39120

Elements 481 & 483, 311-13 & 314-16 N

Rankin St., fronts and N sides, viewed
from NW corner of High and N Rankin Sts.,
looking SE.

Photo #14 of 77 SEP 17 1979 (Negative #1.2)

JUL 30 1979



NATCHEZ ON-TOP-OF-THE-HILL HISTORIC DISTRICT

Natchez, Adams County, Mississippi

Mary W. Miller - May 20, 1979

The Historic Natchez Foundation,

P. O. Box 1761, Natchez, MS 39120

Element 448, 413 N Pine St., front and N
side, viewed from NW corner of N Pine &
Monroe Sts., on the edge of the district
looking SE into the district.

Photo #15 of 77

(Negative #6.7)

SEP 17 1979

JUL 30 1979



61

←

CHURCH SERVICES
SUNDAY SCHOOL
9:00 A.M.
WORSHIP
10:00 A.M.
BIBLE CLASS
11:00 A.M.
PRAYER

NATCHEZ ON-TOP-OF-THE-HILL HISTORIC DISTRICT

Natchez, Adams County, Mississippi

Mary W. Miller - May 20, 1979

The Historic Natchez Foundation

P. O. Box 1761, Natchez, MS 39120

JUL 30 1979
SEP 17 1979

The W side of the 100 block of N Pine St.,
with elements 420, 422, 425, 426, & 429
(Zion Chapel), viewed from the NE corner of
N Pine & Jefferson Sts., looking SW.

Photo #16 of 77 (Negative #5.21A)

Standard



ONE WAY

STOP AHEAD

W. W. W. & S. S. S.

House

NATCHEZ ON-TOP-OF-THE-HILL HISTORIC DISTRICT

Natchez, Adams County, Mississippi

Mary W. Miller - May 20, 1979

The Historic Natchez Foundation,

P. O. Box 1761, Natchez, MS 39120

Elements 220, 222 (King's Tavern), & 224, at
609, 613, & 619 Jefferson St., viewed from
the sidewalk on the E side of N Rankin St.
just below the SE corner with Jefferson St.,
looking NW.

Photo #17 of 77

SEP 17 1979

(Negative #5.20A)

JUL 30 1979



NATCHEZ ON-TOP-OF-THE-HILL HISTORIC DISTRICT

Natchez, Adams County, Mississippi

Mary W. Miller - May 20, 1979

The Historic Natchez Foundation,

P. O. Box 1761, Natchez, MS 39120

JUL 30 1979

Elements 219 (The White Turpin House), 218,
217, at 608, 604, & 600-02 Jefferson St.,
viewed from across Jefferson St.,
looking SW.

Photo #18 of ⁷⁷ SEP 17 1979 (Negative #5.25A)



NATCHEZ ON-TOP-OF-THE-HILL HISTORIC DISTRICT

Natchez, Adams County, Mississippi

Mary W. Miller - May 20, 1979

The Historic Natchez Foundation,

P. O. Box 1761, Natchez, MS 39120

Jefferson St. Methodist Church, element 216,
at 511 Jefferson St., the front & S side,
viewed from the SE corner of Jefferson &
N Union Sts., looking NW.

Photo #19 of 77

(Negative #1.13)

SEP 17 1979

JUL 30 1979



NATCHEZ ON-TOP-OF-THE-HILL HISTORIC DISTRICT

Natchez, Adams County, Mississippi

Mary W. Miller - May 20, 1979

The Historic Natchez Foundation,

P. O. Box 1761, Natchez, MS 39120

Elements 65, 67, & 69, at 300, 302, & 304
N Commerce St., viewed from the SE cor-
ner of Jefferson & N Commerce Sts.,
looking NW.

Photo #20 of 77

(Negative #5.28A)

SEP 17 1979

JUL 30 1979



NATCHEZ ON-TOP-OF-THE-HILL HISTORIC DISTRICT

Natchez, Adams County, Mississippi

Mary W. Miller - May 20, 1979

The Historic Natchez Foundation,

P. O. Box 1761, Natchez, MS 39120

JUL 30 1979

The Smith House (element 381) & the Biggs

House (element 382), at 212 & 300 N

Pearl St., viewed from across N Pearl St.,

looking NW toward Jefferson St.

Photo #21 of 77

(Negative #3.1)

SEP 17 1979



NATCHEZ ON-TOP-OF-THE-HILL HISTORIC DISTRICT

Natchez, Adams County, Mississippi

Mary W. Miller - May 20, 1979

The Historic Natchez Foundation,

P. O. Box 1761, Natchez, MS 39120

The Hardy House, element 609, at 221 N Wall
St., front and W side viewed from across
Jefferson St. on the NE corner with N
Wall St., looking SE.

Photo #22 of 77 (Negative #3.11)

SEP 17 1979

JUL 30 1979



Lambert

OFFICE HOURS: MON-FRI 9:00-5:00
SAT 9:00-12:00
SUN 10:00-12:00

NATCHEZ ON-TOP-OF-THE-HILL HISTORIC DISTRICT

Natchez, Adams County, Mississippi

Mary W. Miller - May 20, 1979

The Historic Natchez Foundation,

P. O. Box 1761, Natchez, MS 39120

Elements 25 & 26, at 302 & 304 N Canal St.,
fronts viewed from across N Canal St.,
looking W.

Photo #23 of 77 (Negative #3.18)

SEP 17 1979

JUL 30 1979



NATCHEZ ON-TOP-OF-THE-HILL HISTORIC DISTRICT

Natchez, Adams County, Mississippi

Mary W. Miller - May 20, 1979

SEP 17 1979

The Historic Natchez Foundation,

P. O. Box 1761, Natchez, MS 39120

The House on Ellicott's Hill, The Priest's
House & Lawyer's Lodge (elements 23, 20,
&19) on the E side of the 200 block of
N Canal St., viewed from the SW corner
with Franklin St., looking NE towards
(see label below)

Jefferson St.

Photo #24 of 77

(Negative #8.10)



NATCHEZ ON-TOP-OF-THE-HILL HISTORIC DISTRICT

Natchez, Adams County, Mississippi

Mary W. Miller - May 20, 1979

The Historic Natchez Foundation,

P. O. Box 1761, Natchez, MS 39120

JUL 30 1979

The Sidetrack, element 2, at 200 N Broadway,
front and S end viewed from Broadway just
N of the Franklin St. intersection, looking
NW toward the bluff.

SEP 17 1979

Photo #25 of 77

(Negative #4.25)



NATCHEZ ON-TOP-OF-THE-HILL HISTORIC DISTRICT

Natchez, Adams County, Mississippi

Mary W. Miller - May 20, 1979

The Historic Natchez Foundation,

P. O. Box 1761, Natchez, MS 39120

Smith-Bontura-Evans House, element 12, at

107 N Broadway, front and N side viewed

from across the street, looking SE.

Photo #26 of 77

(Negative #4.31)

JUL 30 1979

SEP 17 1979



NATCHEZ ON-TOP-OF-THE-HILL HISTORIC DISTRICT

Natchez, Adams County, Mississippi

Mary W. Miller - May 20, 1979

The Historic Natchez Foundation,

P. O. Box 1761, Natchez, MS 39120

JUL 30 1979

Edelweiss, element 15, at 209 S Broadway,
the front viewed from across the street,
looking E.

Photo #27 of 77

(Negative #4.35)

SEP 17 1979



NATCHEZ ON-TOP-OF-THE-HILL HISTORIC DISTRICT

Natchez, Adams County, Mississippi

Mary W. Miller - May 20, 1979

The Historic Natchez Foundation,

P. O. Box 1761, Natchez, MS 39120

SEP 17 1979

The Parsonage, element 16, at 305 S

Broadway, the front viewed from across
the street, looking E.

Photo #28 of 77

(Negative #4.36)

JUL 30 1979



NATCHEZ ON-TOP-OF-THE-HILL HISTORIC DISTRICT

Natchez, Adams County, Mississippi

Mary W. Miller - May 20, 1979

The Historic Natchez Foundation,

P. O. Box 1761, Natchez, MS 39120

JUL 30 1979
SEP 17 1979

Rosalie, element 343, at 100 Orleans St,
the front viewed from Orleans St.,
looking S.

Photo #29 of 77

(Negative #8.9)



FRY BUILDING

THE NEW HOTEL

FRY

FRY

NATCHEZ ON-TOP-OF-THE-HILL HISTORIC DISTRICT

Natchez, Adams County, Mississippi

Mary W. Miller - May 20, 1979

The Historic Natchez Foundation,

P. O. Box 1761, Natchez, MS 39120

JUL 30 1979

The W side of the 100 block of N Pearl

St., with elements 375 (Eola Hotel), 376,

and 378 visible, viewed from the NE

corner of N Pearl and Franklin Sts. looking SW.

SEP 17 1979

Photo #30 of 77

(Negative #4.3A)



Finance
America



ONE WAY

SARAH'S
SHOE
STORE

R
7

STEPHENS

Shoppers

NATCHEZ ON-TOP-OF-THE-HILL HISTORIC DISTRICT

Natchez, Adams County, Mississippi

Mary W. Miller - May 20, 1979

The Historic Natchez Foundation,

P. O. Box 1761, Natchez, MS 39120

The W side of the 100 block of N Commerce
St., with elements 44, 47, 49, 52, 56,
57, 58, & 128 visible, viewed from the
NW cornter of N Commerce & Franklin Sts.,
looking SE.

Photo #31 of 77

(Negative #9.32A)

JUL 30 1979

SEP

1979



MANGEL'S

DIXIE FURNITURE CO.

Lillman's...HAS IT

COMMERCIAL ST

NATCHEZ ON-TOP-OF-THE-HILL HISTORIC DISTRICT

Natchez, Adams County, Mississippi

Mary W. Miller - May 20, 1979

The Historic Natchez Foundation,

P. O. Box 1761, Natchez, MS 39120

JUL 30 1979

The N side of the 500 block of Franklin St., with elements 129, 130, 132, 133, 134, 135, 137, & 139 visible, viewed from the SW corner of Franklin & S Commerce, looking NE.

SEP 17 1979

Photo #32 of 77 (Negative #9.26A)



PYRROU'S

FURNITURE

Catchings
HOME FURNISHINGS

DRUGS

GEISENBERGER BRO DRUG CO

84

FISCH'S
JEWELRY

NATCHEZ ON-TOP-OF-THE-HILL HISTORIC DISTRICT

Natchez, Adams County, Mississippi

Mary W. Miller - May 20, 1979

The Historic Natchez Foundation,

P. O. Box 1761, Natchez, MS 39120

JUL 30 1979

SEP 17 1979

The S side of the 500 block of Franklin St., with elements 136, 138, 140, and 141 visible, viewed from across Franklin St., looking SE.

Photo #33 of 77

(Negative #4.11A)



NATCHEZ ON-TOP-OF-THE-HILL HISTORIC DISTRICT

Natchez, Adams County, Mississippi

Mary W. Miller - May 20, 1979

The Historic Natchez Foundation,

P. O. Box 1761, Natchez, MS 39120

JUL 30 1979

The S side of the 600 block of Franklin
St., with elements 142, 145, 146, 149,
150, 153, 154, 155, and 158 visible,
viewed from the NW corner of Franklin
and N Union Sts., looking SE.

SEP 17 1979

Photo #34 of 77

(Negative #5.15A)



H.E. BYRNE CO.

H.E. BYRNE CO.

BYRNE

FURNITURE

BRANLSON ST

ONE WAY

NO PARKING

NATCHEZ ON-TOP-OF-THE-HILL HISTORIC DISTRICT
Natchez, Adams County, Mississippi
Mary W. Miller - May 20, 1979
The Historic Natchez Foundation,
P. O. Box 1761, Natchez, MS 39120

JUL 30 1979

SEP 17 1979

The S side of Franklin St., with elements
159, 161, 163, 164, 166, and 167 visi-
ble, viewed from the NW corner of Frank-
lin and Rankin Sts., looking SE.

Photo #35 of 77

(Negative #9.5)



FRONT OF THE
FIRST BANK

FRONT OF THE
FIRST BANK

ANNIQUES

RESTAURANT & LOUNGE

NATCHEZ ON-TOP-OF-THE-HILL HISTORIC DISTRICT

Natchez, Adams County, Mississippi

Mary W. Miller - May 20, 1979

The Historic Natchez Foundation,

P. O. Box 1761, Natchez, MS 39120

SEP 17 1979

Elements 234, 235, and 238 (Commercial Bank), at 114, 200, and 206 Main St., viewed from across the street, looking SW.

Photo #36 of 77

(Negative #11.21A)

JUL 30 1979



Spillers.
ECONOMY OPTICAL

RACHEL
FRUIT & NUT CO.
LITTLE ROCK

STOKES BUILDING

STOKES BUILDING

NATCHEZ ON-TOP-OF-THE-HILL HISTORIC DISTRICT

Natchez, Adams County, Mississippi

Mary W. Miller - May 20, 1979

The Historic Natchez Foundation,

P. O. Box 1761, Natchez, MS 39120

Elements 248, 254, 255, 257, and 259, at
301, 315-17, 319, 321, and 323 Main St.
viewed from across the street, looking
NW.

Photo #37 of 77

(Negative #12.32A)

JUL 30 1979
SEP 17 1979



NATCHEZ ON-TOP-OF-THE-HILL HISTORIC DISTRICT

Natchez, Adams County, Mississippi

Mary W. Miller - May 20, 1979

The Historic Natchez Foundation,

P. O. Box 1761, Natchez, MS 39120

Elements 400 (Institute Hall), 401, and
403 (First Presbyterian Church), at 109,
115, and 117 Pearl St., viewed from Main
St. near the corner of Main and Pearl
Sts., looking SE.

Photo #38 of 77

(Negative #12.33A)

JUL 30 1979
SEP 17 1979



AETNA
FINANCE
Financial Services
A MEMBER OF CNA

LOANS
MORTGAGES TRUST FUNDS

ULLMAN'S

NATCHEZ ON-TOP-OF-THE-HILL HISTORIC DISTRICT

Natchez, Adams County, Mississippi

Mary W. Miller - May 20, 1979

The Historic Natchez Foundation,

P. O. Box 1761, Natchez, MS 39120

Elements 270, 272, 275, 278, and 280, at
407, 409, 415-19, 421-25, and 427 Main
St., viewed from across the street,
looking NE.

Photo #39 of 77

(Negative #2.4)

JUL 30 1979

JUL 17 1979

BRITTON & KOONTZ FIRST NATIONAL BANK

Benoist's
APPAREL
FOR
MEN and BOYS
for 90 years known for
ECONOMY... QUALITY
FRIENDLINESS
Cellar for
YOUNG MEN

Benoist's

NATCHEZ
BUILDING & LOAN
ASSOCIATION
SAVINGS-LOANS

Florsheim
shoes

GILBERT

BENEFICIAL
LOANS



NATCHEZ ON-TOP-OF-THE-HILL HISTORIC DISTRICT
Natchez, Adams County, Mississippi
Mary W. Miller - May 20, 1979
The Historic Natchez Foundation,
P. O. Box 1761, Natchez, MS 39120

The S side of the 400 block of Main St.
with elements 264, 267, 268, 269, 271,
273, 274, 276, 277, and 279 (Britton
& Koontz Bank) visible, viewed from
the NE corner of Main and N Commerce
(see label below)

Sts.

Photo #40 of 77 (Negative #2.10)

JUL 30 1979

SEP 17 1979



FIRST FIDELITY
FINANCIAL SERVICES

FIRST FIDELITY
FINANCIAL SERVICES

NATCHEZ ON-TOP-OF-THE-HILL HISTORIC DISTRICT

Natchez, Adams County, Mississippi

Mary W. Miller - May 20, 1979

The Historic Natchez Foundation,

P. O. Box 1761, Natchez, MS 39120

The W side of the 100 block of Commerce
St., with elements 282, 45, 46, 48, 50,
51, 53, 54 and 55 visible, viewed from
the SE corner of Main and Commerce Sts.,
looking NW.

Photo #41 of 77

(Negative #2.13)

JUL 30 1979



NATCHEZ ON-TOP-OF-THE-HILL HISTORIC DISTRICT

Natchez, Adams County, Mississippi

Mary W. Miller - May 20, 1979

The Historic Natchez Foundation,

P. O. Box 1761, Natchez, MS 39120

The S side of the 500 & 600 blocks of Main
St. with elements 283, 284, 286, 288, 290,
291, 293 & 296 (St. Mary's Cathedral),
viewed across the street W of the inter-
section of Main & Commerce Sts., looking SE.

Photo #42 of 77

(Negative #2.6)

JUL 30 1979
17 1979



NATCHEZ ON-TOP-OF-THE-HILL HISTORIC DISTRICT

Natchez, Adams County, Mississippi

Mary W. Miller - May 20, 1979

The Historic Natchez Foundation,

P. O. Box 1761, Natchez, MS 39120

SEP 17 1979

JUL 30 1979

Elements 588 (St. Mary's Cathedral) and
589 (Rectory), at 103 and 107 S Union
St., viewed from across the street,
looking NE.

Photo #43 of 77

(Negative #10.14)



NATCHEZ ON-TOP-OF-THE-HILL HISTORIC DISTRICT

Natchez, Adams County, Mississippi

Mary W. Miller - May 20, 1979

The Historic Natchez Foundation,

P. O. Box 1761, Natchez, MS 39120

JUL 30 1979

Elements 296 (Memorial Park) and 588

(St. Mary's Cathedral), at 618 Main St.

and 103 S Union St., viewed from the

NE corner of Main and N Rankin Sts

looking SW.

SEP 17 1979

Photo #44 of 77

(Negative #10.7)



NATCHEZ ON-TOP-OF-THE-HILL HISTORIC DISTRICT

Natchez, Adams County, Mississippi

Mary W. Miller - May 20, 1979

The Historic Natchez Foundation,

P. O. Box 1761, Natchez, MS 39120

JUL 30 1979

SEP 17 1979

Jitney Jungle, element 295, at 611 Main

St., viewed from the intersection of

Main and Rankin Sts., looking NW.

Photo #45 of 77

(Negative #1.24)



Firestone

Firestone

THE BEST VALUE
SALES
PRICES LOWEST
YOU WILL GET

58

22

50

57

Double
width
tires
35

heavy
duty
tires
35

NATCHEZ ON-TOP-OF-THE-HILL HISTORIC DISTRICT

Natchez, Adams County, Mississippi

Mary W. Miller - May 20, 1979

The Historic Natchez Foundation,

P. O. Box 321, Natchez, MS 39120

JUL 30 1979

SEP 1 1979

Firestone, element 297, at 700 Main St.,
viewed from the intersection of Main
and Rankin Sts., looking SE.

Photo #46 of 77 (Negative #10.8)



NATCHEZ ON-TOP-OF-THE-HILL HISTORIC DISTRICT

Natchez, Adams County, Mississippi

Mary W. Miller - May 20, 1979

The Historic Natchez Foundation,

P. O. Box 1761, Natchez, MS 39120

JUL 30 1979

Williamsburg, element 318, at 821 Main St.,
the front viewed from across the street,
looking N.

Photo #47 of 77

(Negative #6.12)

SEP 17 1979



NATCHEZ ON-TOP-OF-THE-HILL HISTORIC DISTRICT

Natchez, Adams County, Mississippi

Mary W. Miller - May 20, 1979

The Historic Natchez Foundation,

P. O. Box 1761, Natchez, MS 39120

JUL 30 1979

SEP 17 1979

Elements 311, 313 (Winchester House), and
315, at 812, 816 & 818 Main St., viewed
from the sidewalk on the S side of Main
St., looking SE.

Photo #48 of 77

(Negative #6.10)



NATCHEZ ON-TOP-OF-THE-HILL HISTORIC DISTRICT

Natchez, Adams County, Mississippi

Mary W. Miller - May 20, 1979

The Historic Natchez Foundation,

P. O. Box 1761, Natchez, MS 39120

JUL 30 1979

SEP 17 1979
Liberty Hall, element 461, at 117 S. Pine
St., the front & S side viewed from the
SW corner of Pine & State Sts., looking NE.
Photo #49 of 77 (Negative #2.34)



NATCHEZ ON-TOP-OF-THE-HILL HISTORIC DISTRICT

Natchez, Adams County, Mississippi

Mary W. Miller - May 20, 1979

The Historic Natchez Foundation,

P. O. Box 1761, Natchez, MS 39120

JUL 30 1979

Elements 558, 560 & 561, at 704, 706 & 708
State St., viewed from across the street
E of the intersection of State & S Rankin
Sts., looking SE.

Photo #50 of ⁷⁷ (Negative #2.18)

SEP 17 1979



ONE WAY →


SOUTHWEST SEAL
ASSOCIATION

NATCHEZ ON-TOP-OF-THE-HILL HISTORIC DISTRICT

Natchez, Adams County, Mississippi

Mary W. Miller - May 20, 1979

The Historic Natchez Foundation,

P. O. Box 1761, Natchez, MS 39120

Southwest Savings & Loan Association,
element 540, at 513 State St., the front
and W side viewed from across the street
E of the intersection of State & S
Commerce Sts., looking NE.

JUL 30 1979

SEP 17 1979

Photo #51 of 77

(Negative #13.24A)



NATCHEZ ON-TOP-OF-THE-HILL HISTORIC DISTRICT

Natchez, Adams County, Mississippi

Mary W. Miller - May 20, 1979

The Historic Natchez Foundation,

P. O. Box 1761, Natchez, MS 39120

The E side of the 200 & 300 blocks of S
Commerce St., elements 92 (First Natchez
Bank), 93, 94, 95, 96 (B'Nai Israel), 99
(Trinity Episcopal Ch.) & 100 (Kuehnle
Hall) viewed from the NW corner of Com-
(see label below)

merce & State, looking SE.

Photo #52 of 77

(Negative #10.20)

SEP 17 1979

JUL 30 1979



DRIVE-IN BANKING

Richard L. Ligon

100

100

X

NATCHEZ ON-TOP-OF-THE-HILL HISTORIC DISTRICT

Natchez, Adams County, Mississippi

Mary W. Miller - May 20, 1979

The Historic Natchez Foundation,

P. O. Box 1761, Natchez, MS 39120

JUL 30 1979

The E side of the 100 block of S Commerce
St., elements 86, 87, 89, 90, 91 & 537,
viewed from across the street, looking SE.

Photo #53 of 77

(Negative #13.23)

SEP 17 1979



NATCHEZ ON-TOP-OF-THE-HILL HISTORIC DISTRICT
Natchez, Adams County, Mississippi
Ronald W. Miller - September, 1978
Miss. Dept. of Archives & History

The First Presbyterian Church, element 403 at
117 S Pearl St., viewed from the SW corner
of S Pearl & State Sts., looking NE.

Photo #54 of 77

SEP 17 1979
JUL 30 1979



NATCHEZ ON-TOP-OF-THE-HILL HISTORIC DISTRICT

Natchez, Adams County, Mississippi

Dinah Rogers - May 29, 1979

The Historic Natchez Foundation

P. O. Box 1761, Natchez, MS 39120

SEP 17 1979

JUL 30 1979

Elements 617, 535, & 402, at 115 S Wall,
311-3 State, & 124 S Pearl Sts., viewed
from across Market St. near its intersec-
tion with S Wall St., looking SE.

Photo #55 of 77



NATCHEZ ON-TOP-OF-THE-HILL HISTORIC DISTRICT

Natchez, Adams County, Mississippi

Mary W. Miller - May 20, 1979

The Historic Natchez Foundation,

P. O. Box 1761, Natchez, MS 39120

SEP 17 1979

JUL 30 1979

Old Adams County Jail, element 534, at 314
State St., viewed from across the street
E of the intersection of State & S Wall
Sts., looking SE.

Photo #56 of 77

(Negative #13.32A)



NATCHEZ ON-TOP-OF-THE-HILL HISTORIC DISTRICT

Natchez, Adams County, Mississippi

Mary W. Miller - May 20, 1979

The Historic Natchez Foundation,

P. O. Box 1761, Natchez, MS 39120

JUL 30 1979

Adams County Law Building, element 533, at
306 State St. viewed from the NW corner
of State & Wall Sts., looking SE.

Photo #57 of 77

(Negative 13.35A)

SEP 17 1979



NATCHEZ ON-TOP-OF-THE-HILL HISTORIC DISTRICT

Natchez, Adams County, Mississippi

Mary W. Miller - May 20, 1979

The Historic Natchez Foundation,

P. O. Box 1761, Natchez, MS 39120

SEP 17 1979

JUL 30 1979

Elements 531, 532 & 533 at 210, 212 & 306

State St. and element 620 at 200-12 S Wall

St., viewed from across the street N of

the intersection of State & S Canal St.,

looking SE.

Photo #58 of 77

(Negative 11.16A)



NATCHEZ ON-TOP-OF-THE-HILL HISTORIC DISTRICT

Natchez, Adams County, Mississippi

Mary W. Miller - May 20, 1979

The Historic Natchez Foundation,

P. O. Box 1761, Natchez, MS 39120

SEP 17 1979

JUL 30 1979

Dixie, element 622, at 211 S. Wall St.

viewed from across the street, looking
SE.

Photo #59 of 77

(Negative #11.2A)



NATCHEZ ON-TOP-OF-THE-HILL HISTORIC DISTRICT

Natchez, Adams County, Mississippi

Mary W. Miller - May 20, 1979

The Historic Natchez Foundation,

P. O. Box 1761, Natchez, MS 39120

JUL 30 1979

SEP 17 1979

Griffith-McComas House, element 627 at 301

S Wall St., viewed from the NW corner of

Wall and Washington Sts., looking SE.

Photo #60 of 77

(Negative #11.4A)



NATCHEZ ON-TOP-OF-THE-HILL HISTORIC DISTRICT

Natchez, Adams County, Mississippi

Mary W. Miller - May 20, 1979

The Historic Natchez Foundation,

P. O. Box 1761, Natchez, MS 39120

SEP 17 1979

Elements 652, 653, and 654, at 400, 402, and
404 Washington St., viewed from the NW
corner of Washington and Pearl Sts.,
looking SE.

Photo #61 of 77

(Negative #11.68)

JUL 30 1979



NATCHEZ ON-TOP-OF-THE-HILL HISTORIC DISTRICT

Natchez, Adams County, Mississippi

Tod Williams - October, 1978

Natchez Planning Commission, City Hall,

Natchez, MS 39120

SEP 17 1979

Glen Auburn, element 98 at 300 S commerce St.,

viewed from the front yard, looking SW.

Photo #62 of 77

JUL 30 1979



S. COMMERCE ST

WASHING



NATCHEZ ON-TOP-OF-THE-HILL HISTORIC DISTRICT

Natchez, Adams County, Mississippi

Mary W. Miller - May 20, 1979

The Historic Natchez Foundation,

P. O. Box 1761, Natchez, MS 39120

SEP 17 1979

JUL 30 1979

The E side of the 200 block of S Commerce
St., elements 92 (First Natchez Bank),
93, 94, 95, and 96 (B'nai Israel), viewed
from the SW corner of S Commerce and
Washington Sts., looking NE.

Photo #63 of 77

(Negative #13.16A)



ONE WAY

Washingt MUSEUM ST

NATCHEZ ON-TOP-OF-THE-HILL HISTORIC DISTRICT

Natchez, Adams County, Mississippi

Mary W. Miller - May 20, 1979

The Historic Natchez Foundation,

P. O. Box 1761, Natchez, MS 39120

SEP 17 1979

Elements 99 (Trinity Episcopal Church) and
100 (Kuehnle Hall), at 305 S Commerce St.,
viewed from the NW corner of Washington and
S Commerce Sts., looking SE.

Photo #64 of 77

(Negative #10.23)



NATCHEZ ON-TOP-OF-THE-HILL HISTORIC DISTRICT

Natchez, Adams County, Mississippi

Mary W. Miller - May 20, 1979

The Historic Natchez Foundation,

P. O. Box 1761, Natchez, MS 39120

SEP 17 1979

Elements 659 (Van Court Townhouse, 510 Wash-
ington St.) and 597, 598, and 599 at 212,
214, and 216 S Union St., viewed from
across the street, looking SW.

Photo #65 of 77

(Negative #8.32A)

JUL 30 1979



NATCHEZ ON-TOP-OF-THE-HILL HISTORIC DISTRICT

Natchez, Adams County, Mississippi

Mary W. Miller - May 20, 1979

The Historic Natchez Foundation,

P. O. Box 1761, Natchez, MS 39120

SEP 17 1979

JUL 30 1979

Elements 668 and 669, at 613 and 621

Washington St., viewed from S of the
intersection of Washington and S Rankin
Sts., looking NW.

Photo #66 of 77

(Negative #3.20A)



NATCHEZ ON-TOP-OF-THE-HILL HISTORIC DISTRICT

Natchez, Adams County, Mississippi

Mary W. Miller - May 20, 1979

The Historic Natchez Foundation,

P. O. Box 1761, Natchez, MS 39120

SEP 17 1979

Elward, element 667 at 612 Washington St.,
viewed from across the street, looking SE.
Photo #67 of 77 (Negative #12.2A)

JUL 30 1979



NATCHEZ ON-TOP-OF-THE-HILL HISTORIC DISTRICT


Natchez, Adams County, Mississippi

Mary W. Miller - May 20, 1979

The Historic Natchez Foundation,

P. O. Box 1761, Natchez, MS 39120

JUL 30 1979

 17 1979

Greenleaves, element 506 at 303 S Rankin St.,

viewed from near the intersection of S

Rankin and Washington Sts., looking SE.

Photo #68 of 77

(Negative #7.14A)



NATCHEZ ON-TOP-OF-THE-HILL HISTORIC DISTRICT

Natchez, Adams County, Mississippi

Mary W. Miller - May 20, 1979

The Historic Natchez Foundation,

P. O. Box 1761, Natchez, MS 39120

SEP 17 1979

JUL 30 1979

Barnes House, element 670 at 705 Washington
St., viewed from across the street,
looking NE.

Photo #69 of 77

(Negative #7.16A)



NATCHEZ ON-TOP-OF-THE-HILL HISTORIC DISTRICT

Natchez, Adams County, Mississippi

Mary W. Miller - May 20, 1979

The Historic Natchez Foundation,

P. O. Box 1761, Natchez, MS 39120

SEP 17 1979

JUL 30 1979

The Elms, element 469 at 207 S Pine St.,
viewed from the entrance to the grounds
on Pine St., looking E.

Photo #70 of 77

(Negative #6.23A)



NATCHEZ ON-TOP-OF-THE-HILL HISTORIC DISTRICT

Natchez, Adams County, Mississippi

Mary W. Miller - May 20, 1979

The Historic Natchez Foundation,

P. O. Box 1761, Natchez, MS 39120

SEP 17 1979

JUL 30 1979

Element 515 at 409 S Rankin St., viewed
from across the street, looking NE.

Photo #71 of 77

(Negative #7.8A)



NATCHEZ ON-TOP-OF-THE-HILL HISTORIC DISTRICT

Natchez, Adams County, Mississippi

Mary W. Miller - May 20, 1979

The Historic Natchez Foundation,

P. O. Box 1761, Natchez, MS 39120

JUL 30 1979

SEP 17 1979

Rip-Rap, element 516 at 411 S Rankin St.,
viewed from the entrance to the front walk,
looking E.

Photo #72 of 77

(Negative #7.2A)



NATCHEZ ON-TOP-OF-THE-HILL HISTORIC DISTRICT
Natchez, Adams County, Mississippi

Mary W. Miller - May 20, 1979

The Historic Natchez Foundation,

P. O. Box 1761, Natchez, MS 39120

JUL 30 1979

~~SEP 17 1979~~
The Presbyterian Manse, element 509, and the
Pastor's Study, element 510, both at 307
S Rankin St., viewed from S Rankin St.
near its intersection with Orleans,
looking NE.

Photo #73 of 77

(Negative #7.11A)



NATCHEZ ON-TOP-OF-THE-HILL HISTORIC DISTRICT

Natchez, Adams County, Mississippi

Mary W. Miller - May 20, 1979

The Historic Natchez Foundation,

P. O. Box 1761, Natchez, MS 39120



JUL 30 1979

Element 360 at 507 Orleans St., viewed from
across the street, looking NE.

Photo #74 of 77

(Negative #12.78)



NATCHEZ ON-TOP-OF-THE-HILL HISTORIC DISTRICT

Natchez, Adams County, Mississippi

Mary W. Miller - May 20, 1979

The Historic Natchez Foundation,

P. O. Box 1761, Natchez, MS 39120

SEP 17 1979

JUL 30 1979

Elements 357 and 359 at 502 and 506 Orleans
St., viewed from near the intersection of
Orleans and S Commerce Sts., looking SE.

Photo #75 of 77

(Negative #12.8A)



NATCHEZ ON-TOP-OF-THE-HILL HISTORIC DISTRICT

Natchez, Adams County, Mississippi

Mary W. Miller - May 20, 1979

The Historic Natchez Foundation,

P. O. Box 1761, Natchez, MS 39120 03 0 1979

SEP 17 1979

Elements 349, 350, 351, and 352 at 308, 312, 314, and 316 Orleans St., viewed from across the street near the intersection of Orleans & S Wall Sts., looking SE.

Photo #76 of 77

(Negative #11.8A)



NATCHEZ ON-TOP-OF-THE-HILL HISTORIC DISTRICT

Natchez, Adams County, Mississippi

Mary W. Miller - May 20, 1979

The Historic Natchez Foundation,

P. O. Box 1761, Natchez, MS 39120

JUL 30 1979

Elements 636, 637, 638, and 639 at 500, 502, 504, and 506 S Wall St., viewed from the intersection of Milburn Ave. & S Union St., looking SW.

Photo #77 of 77

(Negative #8.6A-7)